



- Ⓐ STORAGE SHED
- Ⓑ STORAGE SHED
- Ⓒ STORAGE SHED
- Ⓓ CENTRAL GARAGE
- Ⓔ MAINTENANCE STORAGE
- Ⓕ MATERIALS LAB
- Ⓖ STORAGE SHED
- Ⓗ OIL STORAGE
- Ⓘ PAINT STORAGE
- ⓵ TRAFFIC SHOP

STATE OF VERMONT		VERMONT	
DEPARTMENT OF STATE BUILDINGS		AGENCY OF ADMINISTRATION	
MONTPELIER.		VERMONT	
SITE PLAN			
AGENCY OF TRANSPORTATION			
MAINTENANCE FACILITY			
DATE	SCALE	REVISIONS	DWG. NO.
DEC. 1971	1" = 50'		5-1
DRAWN BY:	APPROVED BY:		1 OF 1
C. WALKOVY			

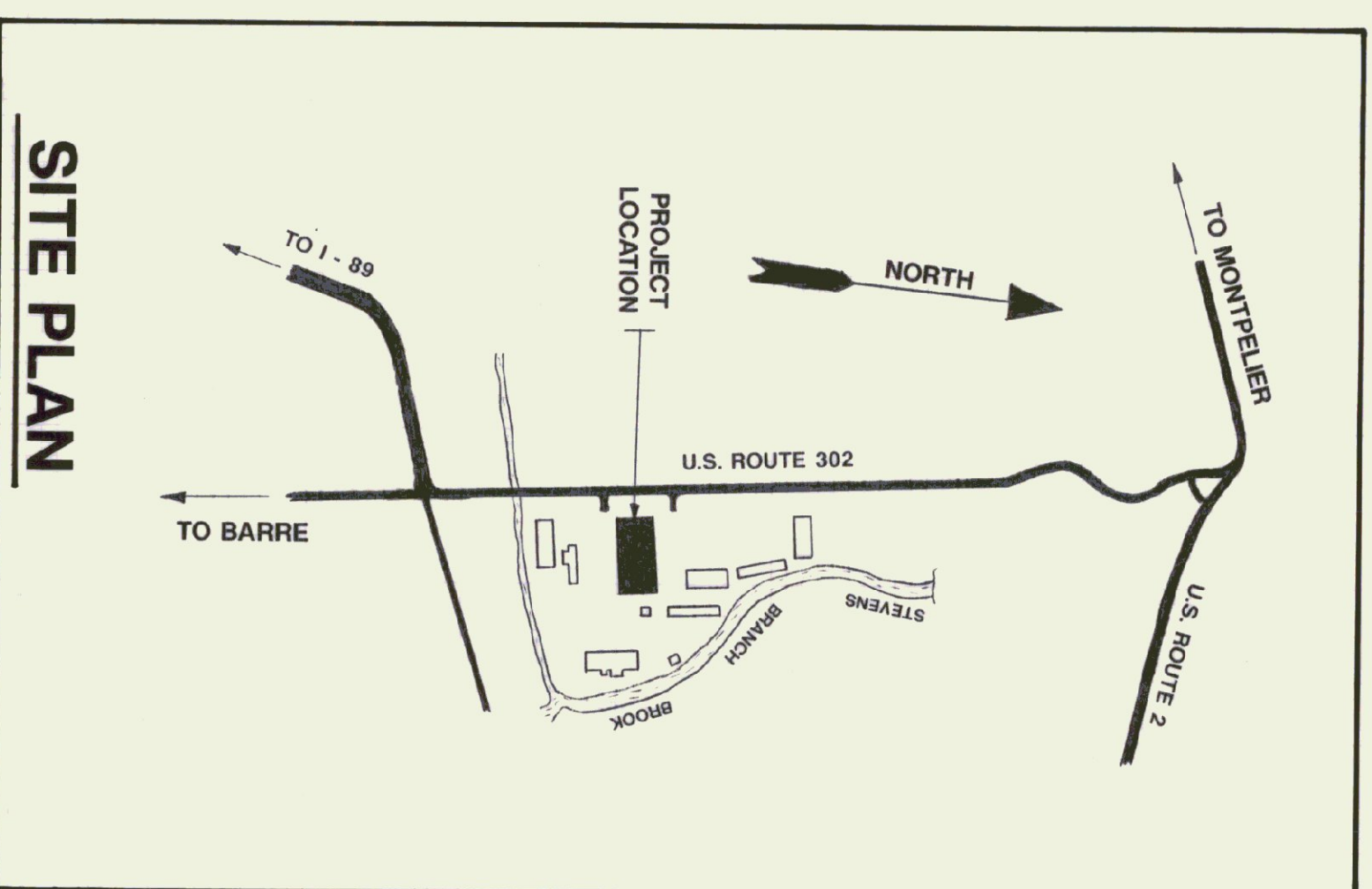
AGENCY OF TRANSPORTATION
ELECTRICAL RENOVATIONS - CENTRAL GARAGE

BARRE-MONTPELIER ROAD
BERLIN, VERMONT

DEPARTMENT OF STATE BUILDINGS
JOHN J. ZAMPIERI, COMMISSIONER

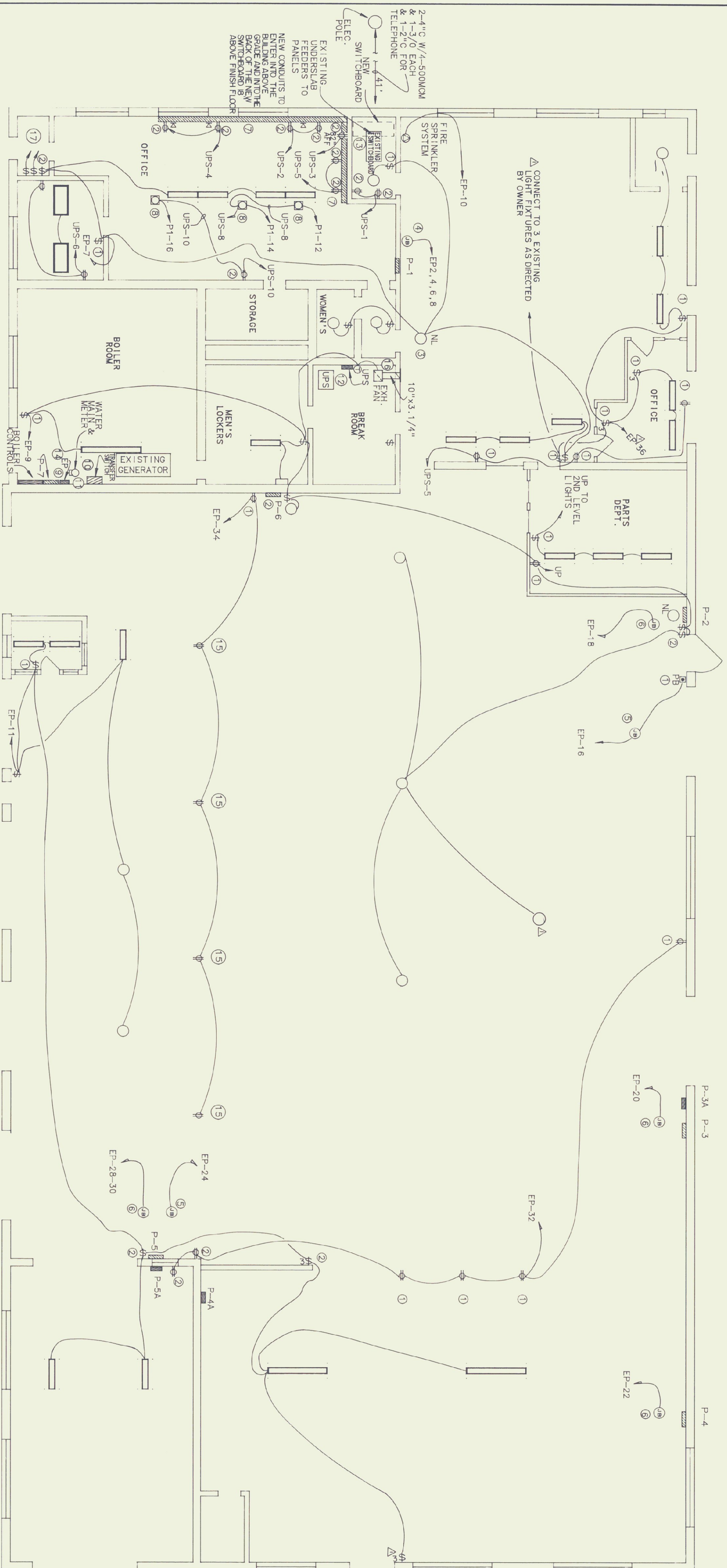
PREPARED BY:
ED PEARSON, ENGINEER
PEARSON & ASSOCIATES

JUNE 1991



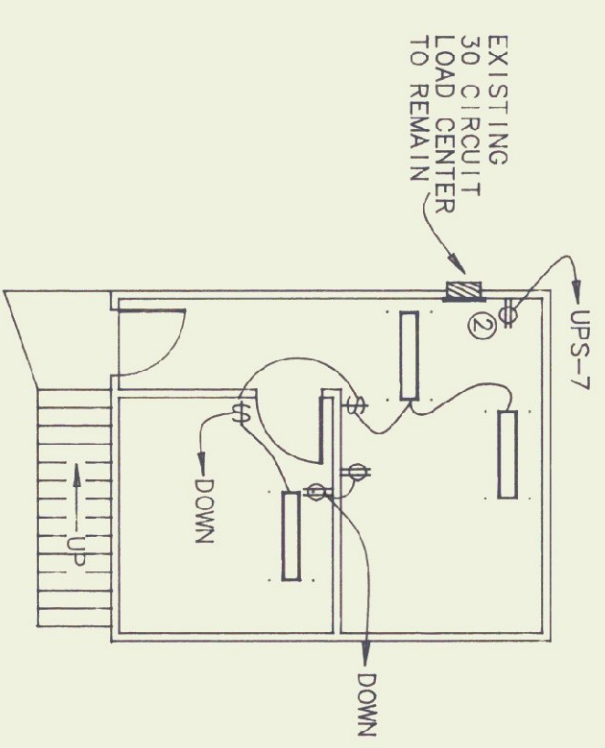
SITE PLAN

<u>INDEX TO DRAWINGS</u>	
E - 1	PLANS
E - 2	PANEL SCHEMATICS
E - 3	PANEL SCHEMATICS
E - 4	DETAILS



CENTRAL GARAGE ELECTRICAL PLAN

SCALE=1/8"=1'-0"



SECOND FLOOR OFFICE

SCALE=1/8"=1'-0"

KEYED NOTES

- ① EXISTING DEVICE - PROVIDE NEW BRANCH CIRCUIT
- ② PROVIDE NEW DEVICE AND NEW BRANCH CIRCUIT
- ③ NIGHT LIGHT CIRCUIT LIGHT FIXTURE IS NOT SWITCHED.
- ④ PROVIDE NEW JUNCTION BOX AND BRANCH CIRCUITS FOR DIESEL PUMP, GAS PUMP, KEROSENE PUMP AND FUEL ISLAND LIGHTS REMOVE EXISTING BRANCH CIRCUITS FOR THESE ITEMS FROM PANEL P-1.
- ⑤ PROVIDE NEW JUNCTION BOX AND BRANCH CIRCUIT FOR OVERHEAD DOORS. REMOVE EXISTING BRANCH CIRCUIT FROM PANEL.
- ⑥ PROVIDE NEW JUNCTION BOX AND BRANCH CIRCUIT FOR HEATER UNITS. REMOVE EXISTING BRANCH CIRCUIT FROM PANEL.
- ⑦ PROVIDE SURFACE METAL RACEWAY 3/4" AFF WITH DIVIDER WIREBOLD G-4400
- ⑧ PROVIDE TELE-POWER POLE.
- ⑨ 2 COMPARTMENT (POWER & COMMUNICATIONS) 1-20A-120V- SPEC GRADE RECEPTACLE & 1-20A-120V- SPEC GRADE ISOLATED GROUND RECEPTACLE. WIREBOLD SMDP-40
- ⑩ REMOVE EXISTING PANEL P-7. PROVIDE NEW PANELS P-7 & EP. EXISTING FEEDER TO P-7 TO REMAIN.
- ⑪ INSTALL NEW 150 AMP TRANSFER SWITCH. SEE ONE LINE DIAGRAM.
- ⑫ RELOCATE EXISTING CONDUIT. WIRE TERMINATIONS AND CONTROLS FOR BOILER #2 TO RIGHT SIDE OF PANEL P-7. TO PROVIDE WALL SPACE FOR PANEL EP & TRANSFER SWITCH.
- ⑬ PROVIDE UNINTERRUPTIBLE POWER SUPPLY AND UPS PANEL. SEE ONE LINE DIAGRAM
- ⑭ EXISTING 2P/15A CIRC BRKR. FOR ELECTRIC GATE TO BE REMOVED. NEW CIRCUIT FOR GATE - 36" AFF.
- ⑮ PROVIDE NEW DEVICE ON COLUMN - 36" AFF.
- ⑯ PROVIDE CEILING EXHAUST FAN. 200CFM @ 110F/SP. BROAN CAT #362 CONTROL WITH LINE VOLTAGE T-STAT. HONEYWELL TECHSTAT1018. FIRE DAMPER AT WALL PENETRATION. DISCHARGE GRILLE.
- ⑰ PROVIDE SWITCHING FOR EXISTING OFFICE LIGHTING.

GENERAL NOTES

1. ALL LIGHT FIXTURES SHOWN ARE EXISTING. PROVIDE NEW BRANCH CIRCUIT & WIRE AS NECESSARY TO PROVIDE POWER TO INDICATED LIGHT FIXTURES FROM NEW POWER PANEL EP.
2. ALL CONVENIENCE OUTLETS ON UPS BRANCH CIRCUIT ARE TO BE SPECIFICATION GRADE. ISOLATED GROUND. GRAY COLOR. HUBBELL IG 5362 GRAY OR EQUAL.
3. ALL WIRING TO COMPLY WITH ARTICLE 511 NEC.

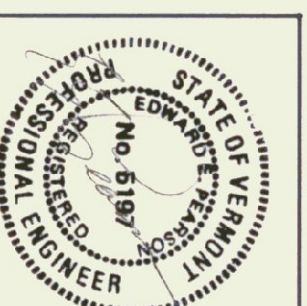
STATE OF VERMONT

MONTPELIER, VERMONT 05602

AGENCY OF TRANSPORTATION

CENTRAL GARAGE ELECTRICAL PLAN

DATE:	SCALE:	REVISIONS:	DWG NO.
05/20/91	1/8" = 1'-0"	Δ 6/7/91 SKL	E-1
DRAWN BY:	APPROVED BY:		1 OF 4
B.W.M			



Pearson & Associates
MECHANICAL & ELECTRICAL ENGINEERS
P.O. BOX 610 STOWE, VERMONT 05672
TEL. (802) 253-9607 FAX (802) 253-9290

PANEL DESIGNATORS

MOUNTING: SURFACE
 MAINS: 125 AMP, MLO, 208Y/120, 3P, 4W
 BRANCHES: AS SHOWN
 CONNECTED LOAD:

CKT NO.	KW LOAD	DESCRIPTION	BREAKER P AMP	BREAKER AMP	BREAKER P	DESCRIPTION	KW LOAD	CKT NO.
1		OFFICE LIGHTS	1	15	15	OFFICE RECP & ELEC. RM.		2
3		OFFICE LIGHTS	1	15	15	HALL LIGHTS		4
5		OFFICE STORE ROOM LIGHTS	1	15	15	UNIT HEATER STOCK ROOM		6
7		WASHROOM LIGHTS	1	15	15	OFFICE RECEPTACLE		8
9		OFFICE LIGHTS	1	15	15	OFFICE RECEPTACLE		10
11		OFFICE LIGHTS	1	15	15	OFFICE POWER POLE		12
13		JOHN'S COMPUTER RECEPTACLE	1	15	15	OFFICE POWER POLE		14
15		TELEPHONE & SENSOR	1	15	15	OFFICE POWER POLE		16
17		WANJA'S COMPUTER RECEPT.	1	15	30	AIR COND. & Foyer HEATER		18
19		OFFICE FLOOR RECEPTACLE	1	15	15	RECEPTACLES HALLWAY		20
21		AIR CONDITIIONER	2	30	15	15	PUMP ISLAND LIGHTS	24
23		SPACE				SPACE		26
25		SPACE				SPACE		28
27		SPACE				SPACE		30
29		SPACE				SPACE		32
31		SPACE				SPACE		34
33		SPACE				SPACE		36
35		SPACE				SPACE		38
37		SPACE				SPACE		40
39		SPACE				SPACE		42
41		SPACE				SPACE		42

PANEL DESIGNATORS

MOUNTING: SURFACE
 MAINS: 125 AMP, MLO, 208Y/120, 3P, 4W
 BRANCHES: AS SHOWN
 CONNECTED LOAD:

CKT NO.	KW LOAD	DESCRIPTION	BREAKER P AMP	BREAKER AMP	BREAKER P	DESCRIPTION	KW LOAD	CKT NO.
1		WATER PUMP	3	30	20	1	LIGHTS	2
3		—	—	—	20	1	LIGHTS	4
5		—	—	—	20	1	LIGHTS	6
7		WELDING RECEPTACLE	3	70	3	70	LIGHTS	8
9		—	—	—	30	3	PAINT SHOP FAN	10
11		—	—	—	—	—	—	12
13		SPARE	1	20	1	—	—	14
15		SPARE	1	20	20	1	SPARE	16
17		SPARE	1	20	20	1	SPARE	18
19		SPACE				SPACE		20
21		SPACE				SPACE		22
23		SPACE				SPACE		24
25		SPACE				SPACE		26
27		SPACE				SPACE		28
29		SPACE				SPACE		30
31		SPACE				SPACE		32
33		SPACE				SPACE		34
35		SPACE				SPACE		36
37		SPACE				SPACE		38
39		SPACE				SPACE		40
41		SPACE				SPACE		42

PANEL DESIGNATORS

MOUNTING: SURFACE
 MAINS: 125 AMP, MLO, 208Y/120, 3PH, 4W
 BRANCHES: AS SHOWN
 CONNECTED LOAD:

CKT NO.	KW LOAD	DESCRIPTION	BREAKER P AMP	BREAKER AMP	BREAKER P	DESCRIPTION	KW LOAD	CKT NO.
1		RECEPTACLE IN TOOL OR B. WALL	1	15	15	1	OVERHEAD DOOR	2
3		TELEPHONE BELL RECEPTACLE	1	15	15	1	HEATER HIGH	4
5		HIGH BAY LIGHTS	1	20	20	1	BLANK	6
7		HIGH BAY LIGHTS	1	20	20	1	LAST THREE	8
9		HIGH BAY LIGHTS	1	20	20	1	CELLING	10
11		DRILL PRESS	3	15	20	3	OFFICE	12
13		—	—	—	—	—	—	14
15		—	—	—	—	—	—	16
17		SPARE	1	20	20	1	SPARE	18
19		SPARE	1	20	20	1	SPARE	20
21		SPACE				SPACE		22
23		SPACE				SPACE		24
25		SPACE				SPACE		26
27		SPACE				SPACE		28
29		SPACE				SPACE		30
31		SPACE				SPACE		32
33		SPACE				SPACE		34
35		SPACE				SPACE		36
37		SPACE				SPACE		38
39		SPACE				SPACE		40
41		SPACE				SPACE		42

PANEL DESIGNATORS

MOUNTING: SURFACE
 MAINS: 225 AMP, MLO, 208Y/120, 3PH, 4W
 BRANCHES: AS SHOWN
 CONNECTED LOAD:

CKT NO.	KW LOAD	DESCRIPTION	BREAKER P AMP	BREAKER AMP	BREAKER P	DESCRIPTION	KW LOAD	CKT NO.
1		HEATERS, MACHINE SHOP	1	15	15	1	RECEPT. NORTH WALL	2
3		REC. & LIGHTS IN GENERATOR & STARTER STORAGE	1	15	15	1	RECEPT. WEST WALL	4
5		ELECTRIC CHAIN FALL	1	15	50	3	SHEDS OIL - J40	6
7		RECEP. WASH ROOM	1	15	—	—	—	8
9		BLANK	1	30	—	—	—	10
11		TRANSFORMER RECEPTACLES OVER TANKS FOR BRANCH	1	15	50	3	LATHE	12
13		EXHAUST FAN MACHINE SHOP	3	15	—	—	—	14
15		—	—	—	—	—	—	16
17		—	—	—	15	3	HACKSAW	18
19		EXHAUST TURBINE	3	40	—	—	—	20
21		—	—	—	—	—	—	22
23		—	—	—	30	3	STEAM JENNEY OUTLET	24
25		WILLING MACHINE	3	20	—	—	—	26
27		—	—	—	—	—	—	28
29		—	—	—	90	3	DRILL PRESS	30
31		SPARE 2 POLE 20 AMP	2	20	—	—	—	32
33		SPARE	—	—	—	—	—	34
35		SPARE	—	—	—	—	—	36
37		SPACE				SPACE		38
39		SPACE				SPACE		40
41		SPACE				SPACE		42

PANEL DESIGNATORS

MOUNTING: SURFACE
 MAINS: 125 AMP, MLO, 208Y/120, 3PH, 4W
 BRANCHES: AS SHOWN
 CONNECTED LOAD:

CKT NO.	KW LOAD	DESCRIPTION	BREAKER P AMP	BREAKER AMP	BREAKER P	DESCRIPTION	KW LOAD	CKT NO.
1		HIGH BAY HEATER	1	15	15	1	REC. ON RIGHT OF PANEL	2
3		—	—	—	—	—	—	4
5		—	—	—	20	1	—	6
7		—	—	—	20	1	—	8
9		—	—	—	50	1	WELDER	10
11		—	—	—	20	2	—	12
13		HIGH BAY EXHAUST FAN	3	15	—	—	—	14
15		—	—	—	100	3	MAIN BREAKER FOR PANEL	16
17		—	—	—	—	—	—	18
19		—	—	—	—	—	—	20
21		—	—	—	—	—	—	22
23		—	—	—	—	—	—	24
25		—	—	—	—	—	—	26
27		—	—	—	—	—	—	28
29		—	—	—	—	—	—	30
31		—	—	—	—	—	—	32
33		—	—	—	—	—	—	34
35		—	—	—	—	—	—	36
37		—	—	—	—	—	—	38
39		—	—	—	—	—	—	40
41		—	—	—	—	—	—	42

PANEL DESIGNATORS

MOUNTING: SURFACE
 MAINS: 125 AMP, MLO, 208Y/120, 3PH, 4W
 BRANCHES: AS SHOWN
 CONNECTED LOAD:

CKT NO.	KW LOAD	DESCRIPTION	BREAKER P AMP	BREAKER AMP	BREAKER P	DESCRIPTION	KW LOAD	CKT NO.
1		SOUTH WALL RECEPTACLES	1	20	20	1	SOUTH WALL BENCH LIGHTS	2
3		RECEP. LIGHT NORTH WALL	1	20	15	1	COND. PUMP	4
5		BLANK	2	20	15	2	BLANK	6
7		—	—	—	—	—	—	8
9		H/D. PRESS	3	20	20	3	ALLEN TESTER	10
11		—	—	—	—	—	—	12
13		—	—	—	—	—	—	14
15		GENERATOR & STARTER TESTER	3	40	15	3	DELTA LATH	16
17		—	—	—	—	—	—	18
19		—	—	—	—	—	—	20
21		—	—	—	—	—	—	22
23		—	—	—	—	—	—	24
25		—	—	—	—	—	—	26
27		—	—	—	—	—	—	28
29		—	—	—	—	—	—	30
31		—	—	—	—	—	—	32
33		—	—	—	—	—	—	34
35		—	—	—	—	—	—	36
37		—	—	—	—	—	—	38
39		—	—	—	—	—	—	40
41		—	—	—	—	—	—	42

KEYED NOTES FOR PANELS

- ① EXISTING CIRCUIT TO BE REMOVED & CONNECTED TO PANEL 1EP.
- ② NEW CIRCUIT TO BE PROVIDED
- ③ EXISTING PANEL - REPLACE PANEL WITH NEW PANEL & CIRCUIT BREAKERS. CONNECT EXISTING CIRCUITS TO NEW CIRCUIT BREAKERS. Δ
- ④ EXISTING CIRCUIT TO BE REMOVED & INSTALLED AT UPS

STATE OF VERMONT

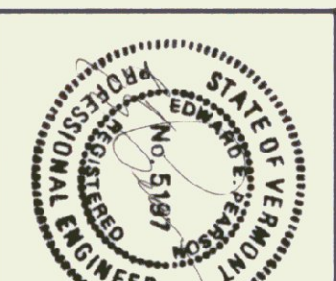
MONTPELIER, VERMONT 05602

AGENCY OF TRANSPORTATION

CENTRAL GARAGE
 ELECTRICAL PLAN

Pearson & Associates
 MECHANICAL & ELECTRICAL ENGINEERS

P.O. BOX 610 STONE, VERMONT 05672
 TEL. (802) 253-9607 FAX (802) 253-9290



DATE: 05/20/91	SCALE: NONE	REVISIONS: Δ 6/7/91	DWG. NO. E-2
DRAWN BY: B.W.M.	APPROVED BY:	SKD	2 OF 4

PANEL DESIGNATORS

MOUNTING: SURFACE
 MAINS: 225 AMP MLO, 208Y/120, 3P, 4W
 BRANCHES: AS SHOWN
 CONNECTED LOAD:

CKT NO.	KW LOAD	DESCRIPTION	BREAKER P AMP	BREAKER AMP	DESCRIPTION	KW LOAD	CKT NO.
1	?	?	1	20	W. LIGHTS		2
3	?	?	1	20			4
5	M. SHOP	LOW BAY LIGHTS	1	15	LOW BAY LIGHTS		6
7	M. SHOP	OFFICE LIGHTS	1	15	REC. ENG.		8
9	M. SHOP	REC. ON RIGHT SIDE OF PANEL	1	15	W. LIGHTS		10
11	P. WASHER	REC. ON RIGHT SIDE OF PANEL	1	30	EX. FAN		12
13	NIGHT LIGHT	REC. ON RIGHT SIDE OF PANEL	1	15			14
15	REC. LOWBOY	REC. BY OVERHEAD DOORS	1	20	NIGHT LIGHT & OFFICE RECEPTACLES		16
17	HEAT	SPARE 50AMP 2 POLE BREAKER	2	50			18
19	?	SPARE	1	15	OFFICE HEAT		20
21	HEAT	SPARE	1	20	RECEPTACLE ON 2ND POLE		22
23	WATER COOLER	SPARE	1	15	SPARE		24
25		SPARE	1	20	SPARE		26
27		SPARE	1	28	SPARE		28
29		SPARE	1	30	SPARE		30
31		SPARE	1	32	SPARE		32
33		SPARE	1	34	SPARE		34
35		SPARE	1	36	SPARE		36
37		SPARE	1	38	SPARE		38
39		SPARE	1	40	SPARE		40
41		SPARE	1	42	SPARE		42

PANEL DESIGNATORS

PROVIDE NEW PANEL MOUNTING: SURFACE
 MAINS: 225 AMP MLO, 208Y/120, 3P, 4W
 BRANCHES: AS SHOWN
 CONNECTED LOAD: 32KW

CKT NO.	KW LOAD	DESCRIPTION	BREAKER P AMP	BREAKER AMP	DESCRIPTION	KW LOAD	CKT NO.
1		TOILET EXHAUST FAN	1	15	COMPRESSOR	15	2
3	2	SUPER AIR CONDITIONER	2	30			4
5	-	-	-	15	-		6
7	-	-	-	70	COMPRESSOR	15	8
9	FLOOR HEAT		1	15			10
11	AIR CONDITIONER		2	15			12
13	AIR CONDITIONER		-	-	SPARE		14
15	SPACE		-	20	SPARE		16
17	SPACE		-	-	SPACE		18
19	SPACE		-	-	SPACE		20
21	SPACE		-	-	SPACE		22
23	SPACE		-	-	SPACE		24
25	SPACE		-	-	SPACE		26
27	SPACE		-	-	SPACE		28
29	SPACE		-	-	SPACE		30

PANEL DESIGNATORS

MOUNTING: SURFACE
 MAINS: 225 AMP MLO, 208Y/120, 3P, 4W
 BRANCHES: AS SHOWN
 CONNECTED LOAD:

CKT NO.	KW LOAD	DESCRIPTION	BREAKER P AMP	BREAKER AMP	DESCRIPTION	KW LOAD	CKT NO.
1		LOW BAY LIGHTS, GREASE RACK	1	15	LOW BAY LIGHTS		2
3		LOW BAY LIGHTS, GREASE RACK	1	15	LOW BAY LIGHTS		4
5		LOW BAY LIGHTS BY OFFICE	1	15	REC. FOR TIRE BALANCER		6
7		OFFICE LIGHTS	1	15			8
9		RECEPTACLE	1	15	? 2 POLE		10
11		REC. ON RIGHT SIDE OF PANEL	1	15	1 HIGH BAY LIGHTS		12
13		REC. BY OVERHEAD DOORS	1	20	1 HEATER LOW BAY		14
15		SPARE 50AMP 2 POLE BREAKER	2	50	1 HEATER HIGH BAY		16
17		SPARE	1	15	2 OFFICE HEAT		18
19		SPARE	1	15			20
21		SPARE	1	20	15		22
23		SPARE	1	20	1 RECEPTACLE ON 2ND POLE		24
25		SPACE	1	20	SPACE		26
27		SPACE	1	28	SPACE		28
29		SPACE	1	30	SPACE		30
31		SPACE	1	32	SPACE		32
33		SPACE	1	34	SPACE		34
35		SPACE	1	36	SPACE		36
37		SPACE	1	38	SPACE		38
39		SPACE	1	40	SPACE		40
41		SPACE	1	42	SPACE		42

PANEL DESIGNATORS

PROVIDE NEW PANEL MOUNTING: SURFACE
 MAINS: 150AMP MCB, 208Y/120, 3PH, 4W
 BRANCHES: AS SHOWN
 EMERGENCY GEN. PANEL CONNECTED LOAD: 40 KW

CKT NO.	KW LOAD	DESCRIPTION	BREAKER P AMP	BREAKER AMP	DESCRIPTION	KW LOAD	CKT NO.
1	10 KW	COMPUTER POWER SYSTEM	2	70	1 DIESEL PUMP	1.5 KW	2
3		" " " "	-	-	1 GAS PUMP	1.5 KW	4
5		OUTLETS	1	20	1 KEROSENE PUMP	1.5 KW	6
7	2 KW	LIGHTS -/ GALL BELL	1	20	1 PUMP ISLAND LIGHTS	.5 KW	8
9	2 KW	LIGHTS	1	20	1 FIRE SPRINKLER SYSTEM		10
11		LIGHTS	1	20	1 UNIVENT & CIRC PUMP		12
13	6 KW	#1 BOILER	3	40	1 BOILER ROOM OUTLETS		14
15		#1 BOILER	15	1	1 OVERHEAD DOOR		16
17		#1 BOILER	15	1	1 HEATERS		18
19	6 KW	#2 BOILER	3	40	1 HEATERS		20
21		#2 BOILER	15	1	1 HEATERS		22
23		#2 BOILER	15	2	1 OVERHEAD DOORS		24
25	3 KW	FEE PUMPS	3	15	2 OVERHEAD DOORS		26
27		FEE PUMPS	15	1	1 HEATERS		28
29		FEE PUMPS	15	1	1 HEATERS		30
31	3 KW	FEE PUMPS	3	15	1 OUTLETS		32
33		FEE PUMPS	20	1	1 OUTLETS		34
35		FEE PUMPS	20	1	1 LIGHTS Δ		36
37	1.5 KW	FEE VALVES	1	15	SPACE		38
39		GATE	2	15	SPACE		40
41		GATE	-	-	SPACE		42

PANEL DESIGNATORS

MOUNTING: -EXISTING PANEL-
 MAINS: THIS PANEL TO BE REMOVED
 BRANCHES: & REPLACED BY NEW PANELS P-7 & EP
 CONNECTED LOAD:

CKT NO.	KW LOAD	DESCRIPTION	BREAKER P AMP	BREAKER AMP	DESCRIPTION	KW LOAD	CKT NO.
1		OFF HEAT	1	15	1 FLOOR HEAT		2
3		TOILET & EXHAUST FAN	1	15	1 LIGHTS & GALL BELL		4
5		UNIVENT & CIRC. PUMP	1	15	1 COMPUTER OUTLET		6
7		SUPER AIR COND.	3	30	1 BOILER ROOM OUTLET		8
9			-	-	3 COMPRESSOR		10
11			-	-			12
13		FEE PUMPS	3	15			14
15			-	-	70		16
17			-	-			18
19		FEE PUMPS	3	15			20
21			-	-	40		22
23			-	-			24
25		#2 BOILER	3	50			26
27			-	-	15		28
29			-	-			30
31		SPACE					32
33		SPACE					34
35		SPACE					36
37		SPACE					38
39		SPACE					40
41		SPACE					42

PANEL DESIGNATORS

PROVIDE NEW PANEL MOUNTING: SURFACE
 MAINS: 60 AMP MCB, 120/240, 1PHASE, 3W RE
 BRANCHES: AS SHOWN - ISOLATED EQUIPMENT GROUND
 UNINTERRUPTABLE POWER SUPPLY CONNECTED LOAD: 7 KW

CKT NO.	KW LOAD	DESCRIPTION	BREAKER P AMP	BREAKER AMP	DESCRIPTION	KW LOAD	CKT NO.
1	.5	TEL & SECURITY	1	15	1 TERMINALS & PRINTERS	0.3	2
3	.3	IBM 3274	1	20	1 TERMINALS & PRINTERS	1.5	4
5	1.5	TERMINALS & PRINTERS	1	20	1 TERMINALS & PRINTERS	1.5	6
7	1.0	TERMINALS & PRINTERS	1	20	1 TERMINALS & PRINTERS	1.0	8
9		SPACE	1	20	1 TERMINALS & PRINTERS	1.0	10
11		SPACE			1 TERMINALS & PRINTERS		12
13		SPACE			SPACE		14
15		SPACE			SPACE		16

KEYED NOTES FOR PANELS

- ① EXISTING CIRCUIT TO BE REMOVED & CONNECTED TO PANEL - 'EP'
- ② NEW CIRCUIT TO BE PROVIDED
- ③ EXISTING PANEL & CIRCUIT BREAKERS - REPLACE PANEL WITH NEW PANEL & CIRCUIT BREAKERS - CONNECT EXISTING CIRCUITS TO NEW CIRCUIT BREAKERS Δ
- ④ EXISTING CIRCUIT TO BE REMOVED & INSTALLED AT UPS

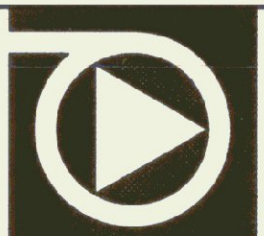
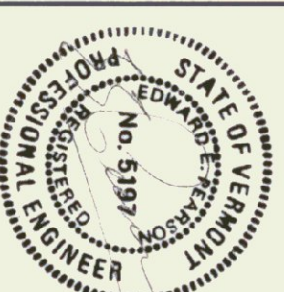
STATE OF VERMONT

MONTPELIER, VERMONT 05602

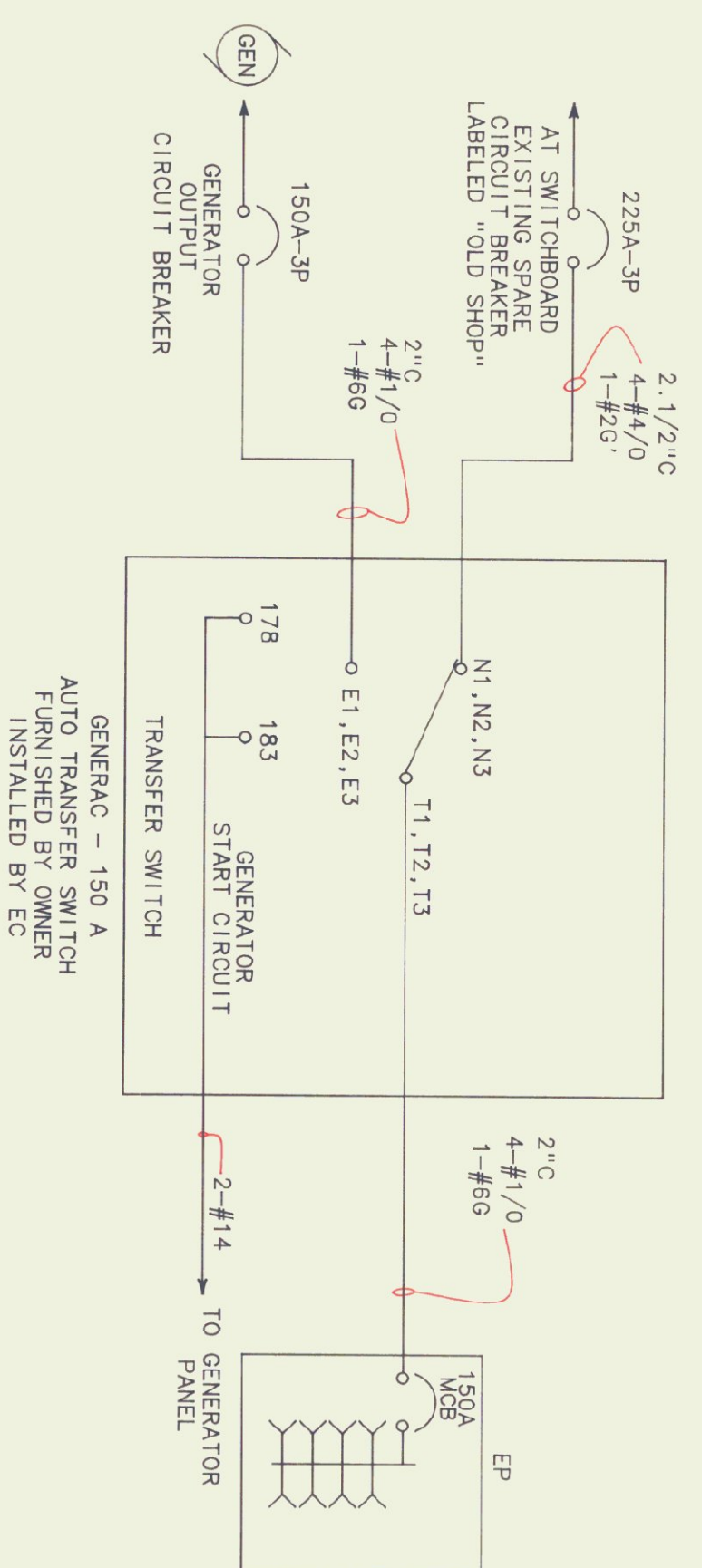
AGENCY OF TRANSPORTATION

CENTRAL GARAGE
 ELECTRICAL PLAN

DATE: 05/20/91	SCALE: NONE	REVISIONS: Δ 6/7/91 SKL	DWG NO. E-3
DRAWN BY: B.W.M	APPROVED BY:		3 OF 4

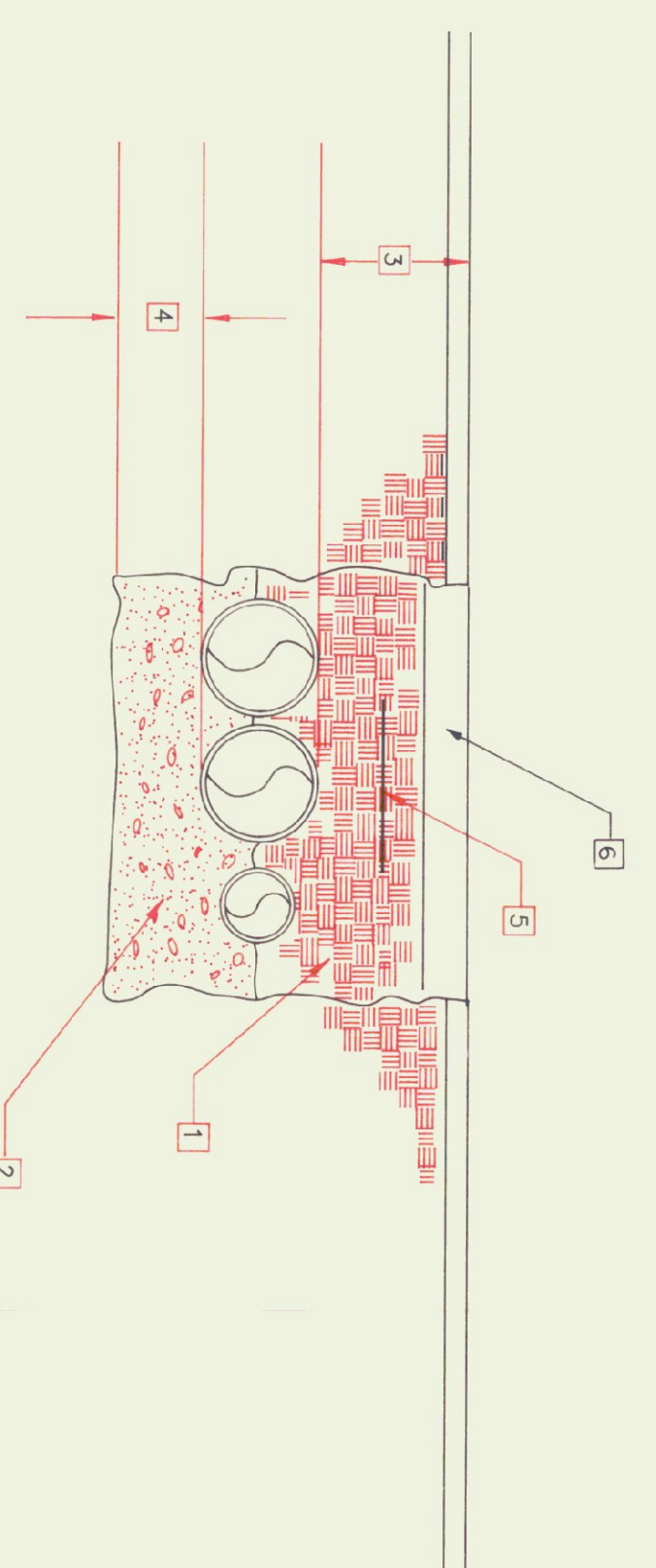


Pearson & Associates
 MECHANICAL & ELECTRICAL ENGINEERS
 P.O. BOX 610 STOWE, VERMONT 05672
 TEL. (802) 253-9607 FAX (802) 253-9290



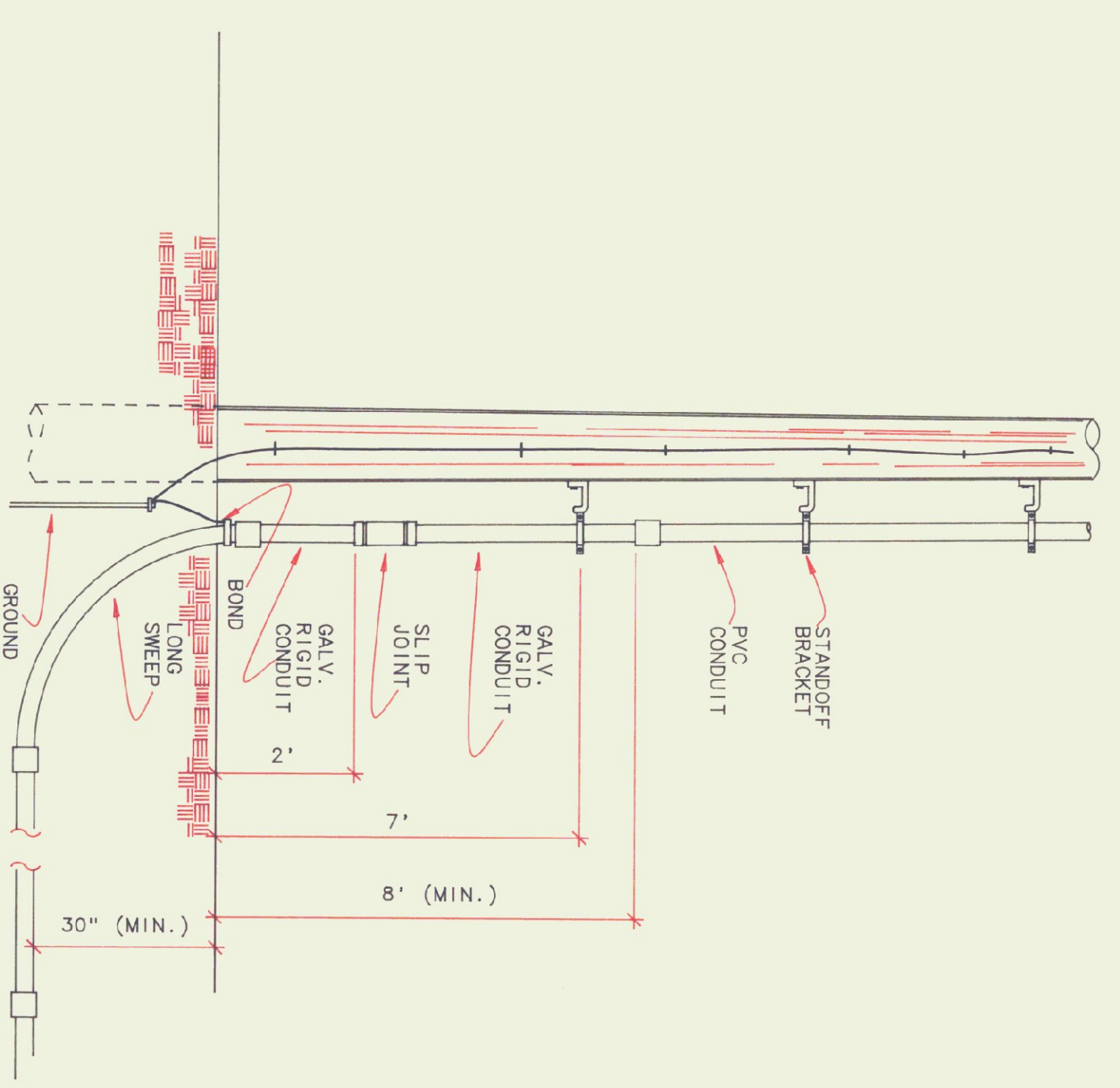
ONE LINE DIAGRAM - AUTO TRANSFER SWITCH

NO SCALE



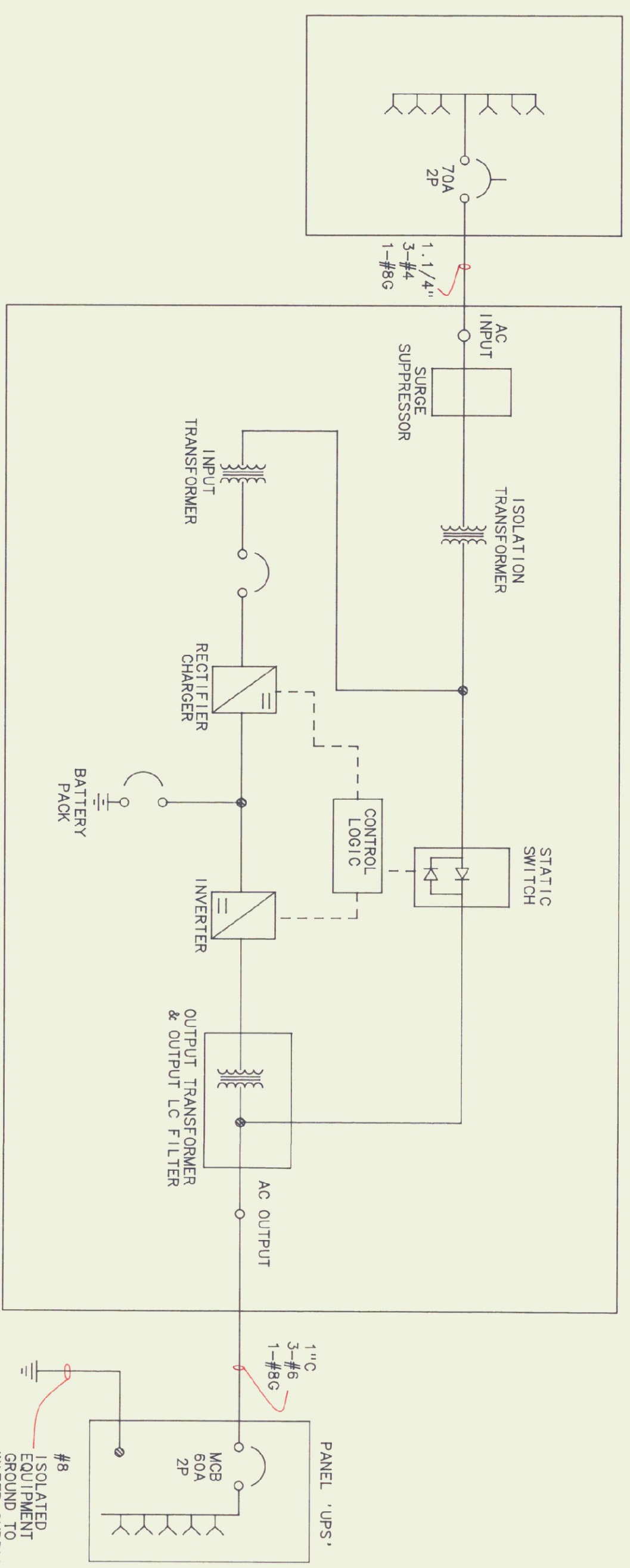
UNDERGROUND SERVICE TRENCH DETAIL

NO SCALE



CONDUIT RISER DETAIL

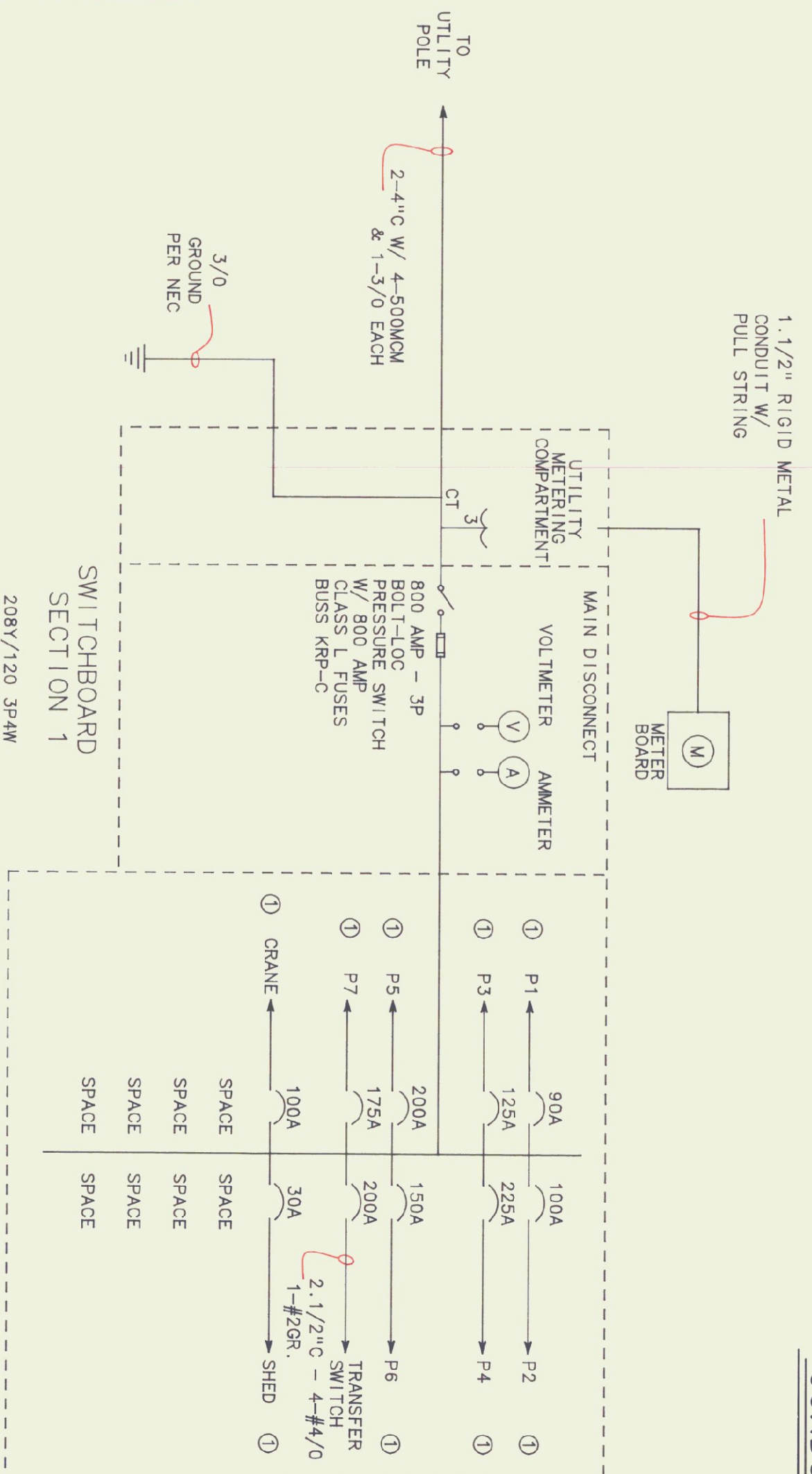
NO SCALE



UNINTERERRUPTIBLE POWER SUPPLY
SINGLE PHASE, POWER RATING 10KVA, 208VAC INPUT, 120/240 VAC OUTPUT,
90 Hz., 10 MINUTE FULL LOAD BACKUP, SQUARE D OR TOPAZ MODEL 88101
OR APPROVED EQUAL.

UPS ONE LINE DIAGRAM

NO SCALE



SERVICE ENTRANCE & SWITCHBOARD ONE LINE DIAGRAM

NO SCALE

KEYED NOTES

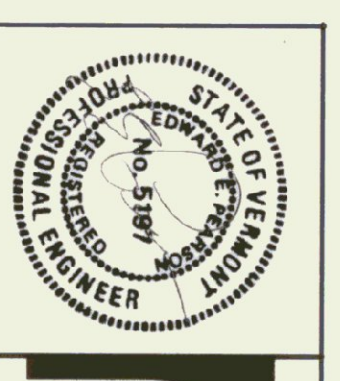
① EXISTING CIRCUIT, EXTEND CONDUIT/WIRE AS NECESSARY & CONNECT TO NEW CIRCUIT BREAKER.

NOTES

- REFER TO SPECIFICATIONS FOR CONTRACTOR AND/OR ELECTRICAL RESPONSIBILITIES.
- SWITCHBOARD TO BE FRONT ACCESSIBLE ONLY, EXISTING ELEC. ROOM DOES NOT ALLOW SIDE OR REAR ACCESS.

ALTERNATE BID ITEM:
EXISTING SWITCHBOARD TO REMAIN

Pearson & Associates
MECHANICAL & ELECTRICAL ENGINEERS
P.O. BOX 610 STOWE, VERMONT 05672
TEL. (802) 253-9607 FAX (802) 253-9290



STATE OF VERMONT
MONTPELIER, VERMONT 05602

AGENCY OF TRANSPORTATION
CENTRAL GARAGE
ELECTRICAL PLAN

DATE: 05/20/91 SCALE: NONE REVISIONS: DWG NO. E-4
DRAWN BY: B.W.M. APPROVED BY: [Signature] Δ 6/7/91 S.M. E-4

4 OF 4