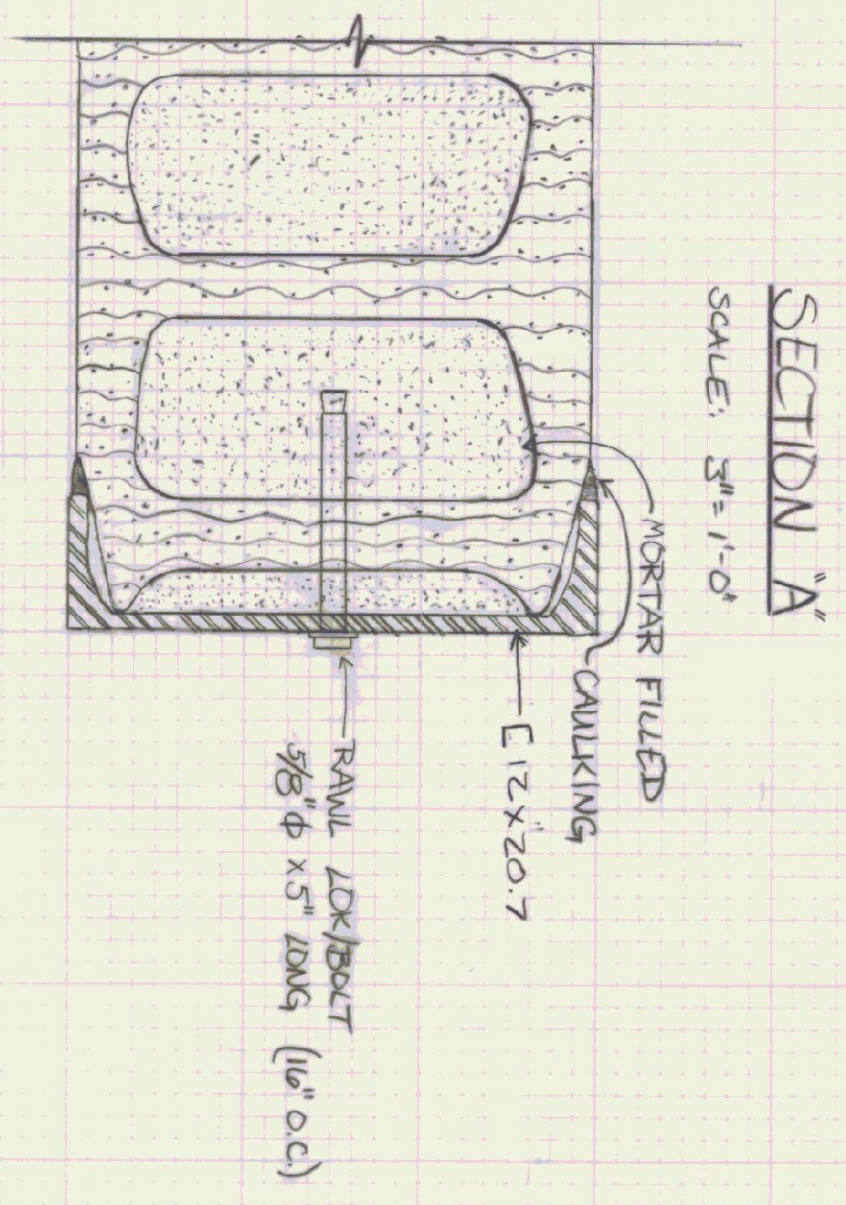
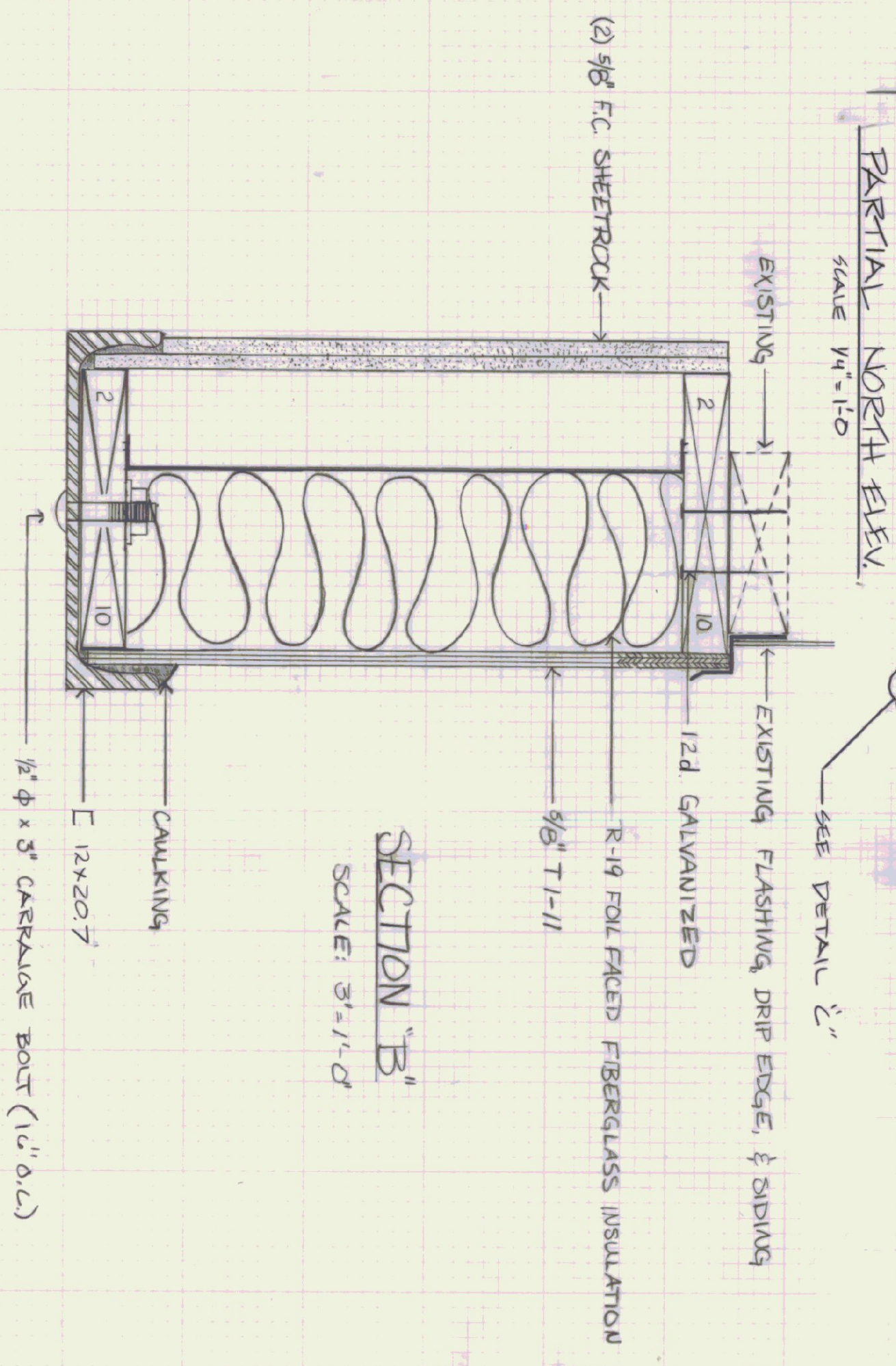


EXISTING CONDITIONS:

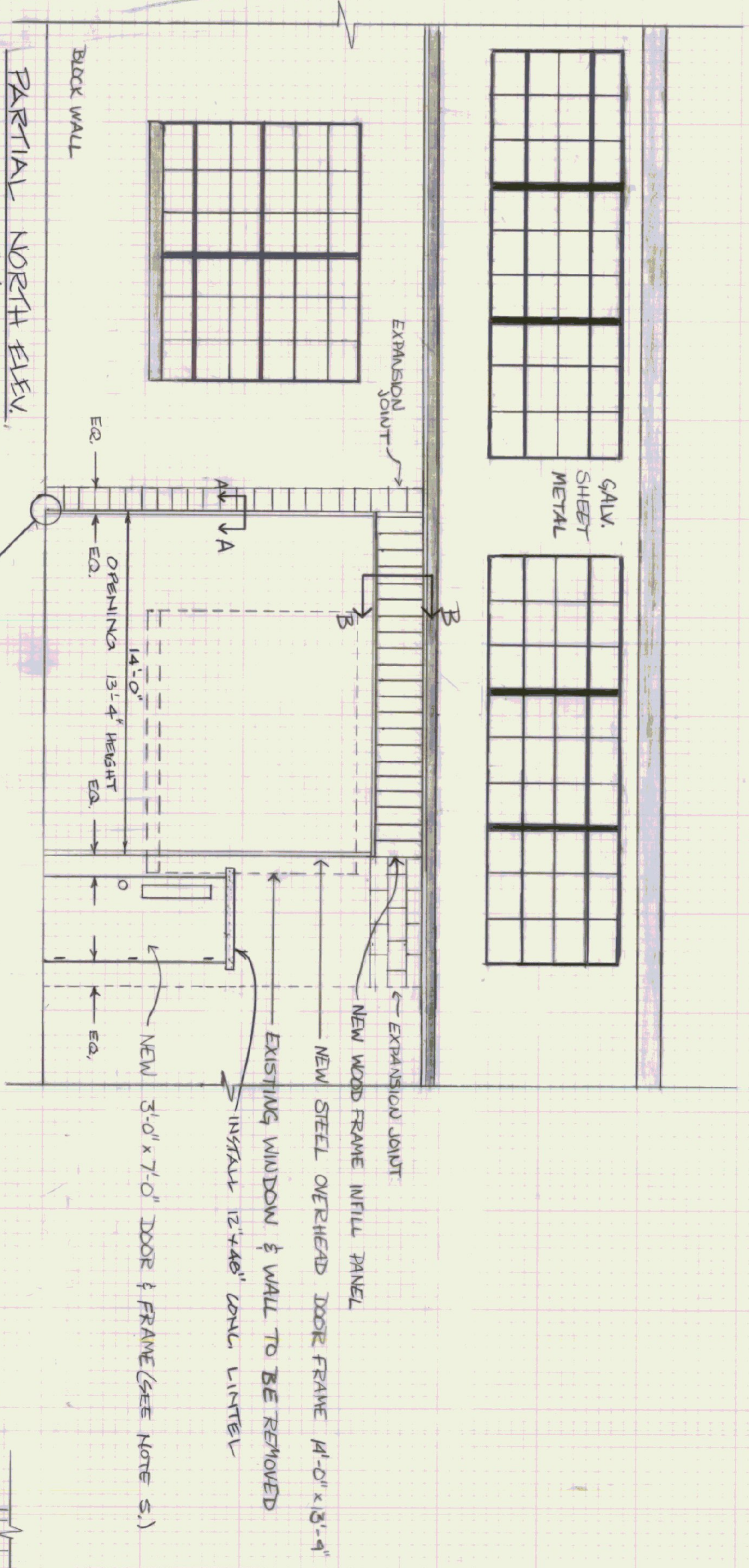
1. CONTRACTOR TO REMOVE & DISPOSE OF EXISTING WINDOW
2. CONTRACTOR TO REMOVE & DISPOSE OF BLOCK WALL BETWEEN EXPANSION JOINTS AS INDICATED
3. CONTRACTOR MAY RE-USE EXISTING COLUMN CLIPS
4. AIR LINES AND ELECTRICAL CONDUIT WILL BE REMOVED BY OTHERS



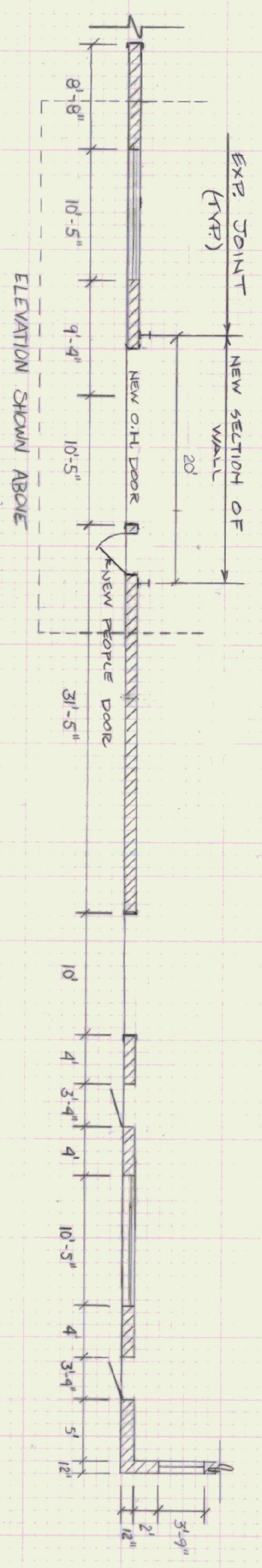
SECTION "A"
SCALE: 3"=1'-0"



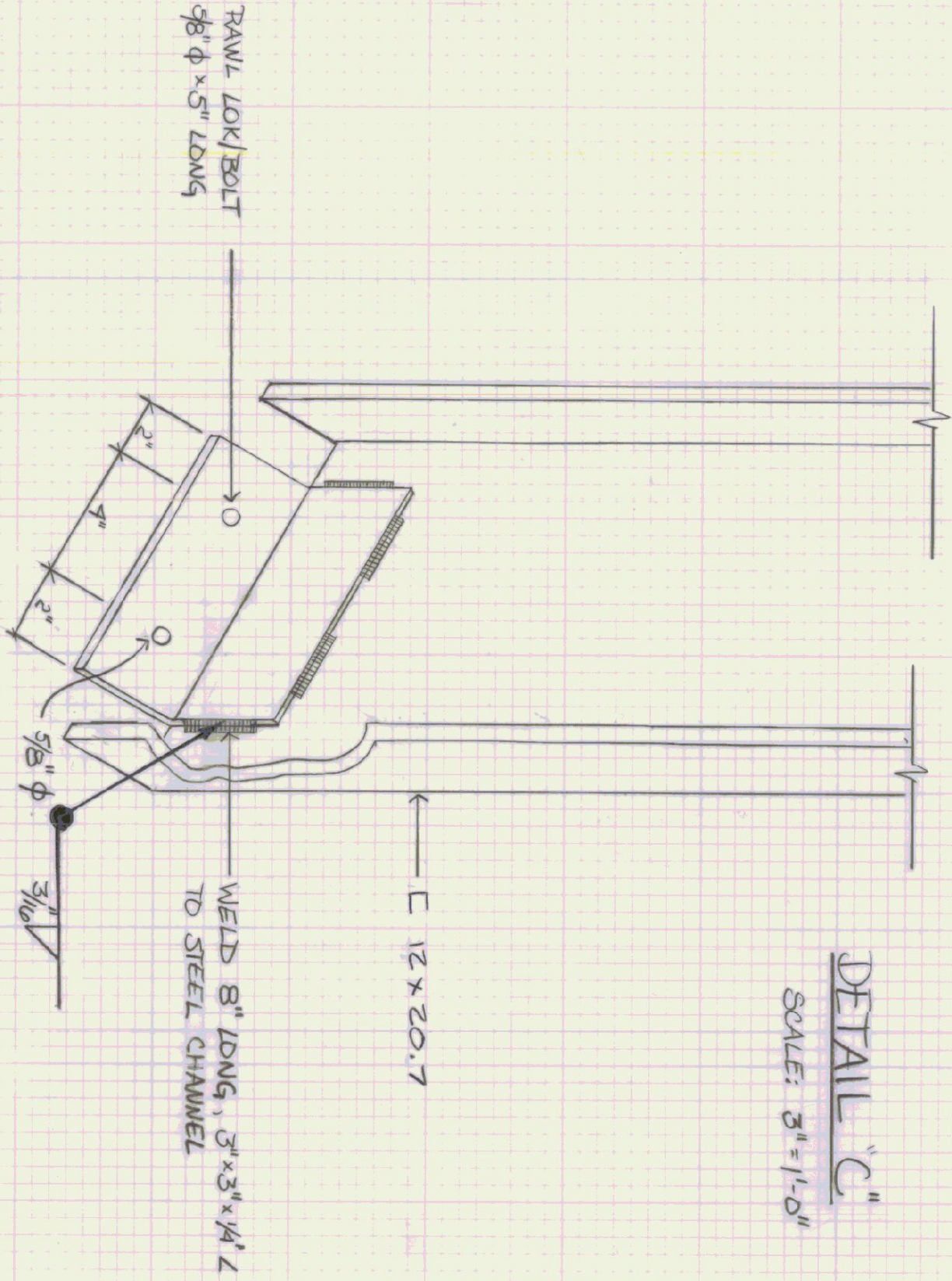
SECTION "B"
SCALE: 3"=1'-0"



PARTIAL NORTH ELEV.
SCALE 1/4"=1'-0"



PARTIAL FLOOR PLAN
SCALE 1/8"=1'-0"



DETAIL "C"
SCALE: 3"=1'-0"

CONSTRUCTION NOTES:

1. PROVIDE NEW STEEL CHANNEL OVERHEAD DOORFRAME, C12x20.7 (12" x 2.94" x .28")
2. CONSTRUCT NEW 12" MASONRY BLOCK WALL (FILL ALL BLOCK VOIDS WITH MORTAR)
3. CONSTRUCT 2"x10" WOOD FRAME INFILL PANEL
 - A. 5/8" T-1-11 EXTERIOR SURFACE
 - B. 9/8" F.C. SHEETROCK (2 LAYERS) INTERIOR
 - C. 6" (R-11) FIBERGLASS INSULATION
 - D. PROVIDE NEW METAL FLASHING (INFILL PANEL)
4. PROVIDE NEW INSULATED GLASS DOOR (18 GA) WITH 100 SQ. INCHES GLASS & SS. KICKPLATE
5. PROVIDE NEW PIONEER DOOR AND FRAME (OR EQUAL) DOOR TO BE 3'-7" x 13 1/4" (18 GA) GLASS & SS. KICK PLATE, FRAME TO BE 3"x7" SERIES F-16 W/ PERIMETER INSULATION STRIPS. BUT 1 1/2" HINGES W/ NON REMOVABLE PINS. (1 1/2" x 1 1/2") (LOSER TO BE A (SAGEH'S 1250XTB) BACK CHECK.)
6. NEW OVERHEAD DOOR BY OTHERS.
7. DURA-WALL EVERY 3rd COURSE IN NEW BLOCKS.
8. PAINTING BY OTHERS.

STATE OF VERMONT		VERMONT	
DEPARTMENT OF STATE BUILDINGS		VERMONT	
AGENCY OF ADMINISTRATION		VERMONT	
MONTPELIER.		VERMONT	
AGENCY OF TRANSPORTATION			
CENTRAL HIGHWAY GARAGE			
BERLIN			
DATE	SCALE	REVISIONS	DWG. NO.
2/15/86	AS NOTED		S-1
DRAWN BY:	APPROVED BY:		
M. INCERPI	[Signature]		