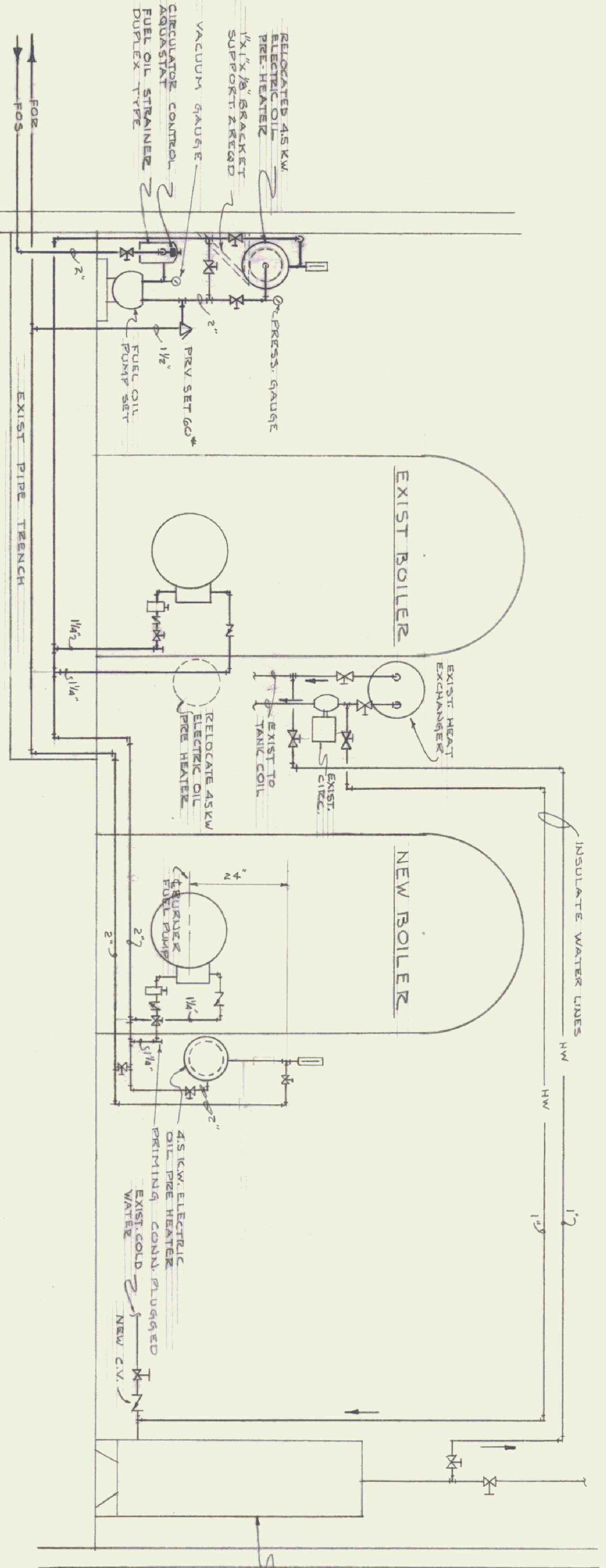


BOILER ROOM FLOOR PLAN
SCALE 1/4"=1'-0"



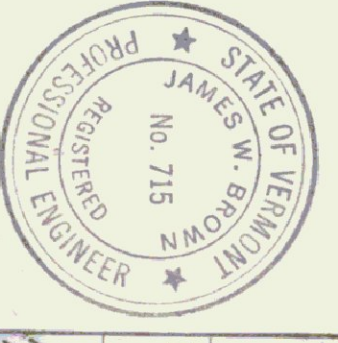
SCHEMATIC DIAGRAM FUEL OIL PIPING
NO SCALE

EQUIPMENT NOTES:
 FUEL OIL PUMP: KRAISSEL CLASS 66 SIZE 60-75
 200 G.P.H. 100" DISH PRESS. 7/8" OIL, 8000 S.S.U. 100°F.
 1/2 HP. 208V. 3-PHASE MOTOR. PUMP RPM 4000. WITH
 MAGNETIC STARTER.
 FUEL OIL STRAINER: KRAISSEL CLASS 72 NR 72-37
 1/2" PIPE SIZE, 12.7 W.P.
 PRESSURE RELIEF VALVE: BAILEY NR 118, SIZE 1 1/2" 40-80 RANGE
 PRESSURE GAUGE: PREFERRED 0-160 RANGE BOURDON TYPE 1/4" CONN.
 VACUUM GAUGE: PREFERRED 0-30 IN. BOURDON TYPE 1/4" CONN.
 THERMOMETERS: PREFERRED INDUSTRIAL TYPE 209, 220°F 2" DIAL

- NOTES:
- (1) VALVES & FUEL OIL STRAINERS AT OIL BURNERS ARE EXISTING AND SHALL REMAIN. PROVIDE NEW SUPPLY & RETURN PIPING
 - (2) FUEL OIL SUPPLY & RETURN LINES ARE EXISTING. MAKE CHANGES AS SHOWN TO RELIEF HEATERS, BURNERS, PUMPS, ETC.
 - (3) HOT WATER PIPING FROM HEAT EXCHANGER TO TANK COIL IS EXISTING. PROVIDE PIPING FROM HOT WATER TO THIS LINE FOR START UP OIL HEATING AS SHOWN. FIELD ROUTE PIPING VALVING SHOWN SHALL BE PROVIDED IF NOT EXISTING.
 - (4) REUSE FIREWIRE CONTROL & POWER EQUIPMENT FOR 45 KW HEATER TO BE RELOCATED
 - (5) SPECIFICATIONS FOR PIPING MATERIALS, VALVES, METHODS, ETC. SHALL BE AS CONTAINED IN SPECIFICATIONS DATED AUG. 1950

ALTERATIONS TO FUEL OIL SYSTEM
 NEW BOILER INSTALLATION
 AND
 ALTERATIONS TO HEATING SYSTEM

STATE HIGHWAY GARAGE
 MONTPELIER VERMONT



PROJECT NO.	772	JENNISON ENGINEERING INC.	SHEET NO.	SK-1
DRAWN BY	ARM	CONSULTING ENGINEERS	DATE	NOV 1950
SCALE	AS SHOWN	89 COLLEGE ST. BURLINGTON, VT.	TEL. UN 2-0723	