

NO.	KEYED NOTES
1	REMOVE 2 EXISTING CIRCUIT BREAKERS AND ENCLOSEURE PATCH WALL. CONNECT CIRCUIT FOR ENTRY HEATER TO EXISTING CIRCUIT BREAKER IN PANEL P-1, 30 AMP, 2POLE.
2	EXISTING ENTRY HEATER TO REMAIN. PROVIDE CIRCUIT FROM PANEL P-1.
3	INSTALLATION OF WOOD STRAPPING AND SHEETROCK.

ELECTRICAL FIXTURE SCHEDULE			
KEY	MANUFACTURE & MODEL	AMOUNTING	LAMPS
FA	COLUMBIA TB-P4-243G-49	RECESSED	QUAN 3, TB OCTOLUME
	363 120 350		3500K, 32W

**DESCRIPTION OF WORK**

1. FIRE PROTECTION SYSTEM - REMOVE EXISTING DRY HEADS IN EXISTING CEILING. EXTEND PIPING TO NEW SUSPENDED CEILING. PROVIDE NEW HEADS, EXTENDED IN TILE (STAR MODEL ME-1 FLUSH TYPE DRY PENDENT OR EQUAL) AND PROVIDE STANDARD DRY HEADS IN PLENUM SPACE ABOVE CEILING.

2. AIR CONDITIONING SYSTEM - PROVIDE COMPLETE AIR CONDITIONING SYSTEM INCLUDING ROOF TOP UNIT, CURB, GALVANIZED SHEET METAL DUCTWORK AS PER SMACNA, CONTROL WIRING, DAMPERS, GRILLES AND REGISTERS.

3. SUPPLY DUCT TO BE INSULATED WITH MIN. 1" THICK FOIL-REINFORCED KRAFT FACED VAPOR BARRIER JACKETS, INORGANIC GLASS FIBER BLANKET COMMERCIAL GRADE.

APPROVED ROOFING CONTRACTOR TO WEATHER PROOF CURB TO EXISTING TROCAL ROOF AS PER TROCAL FACTORY APPROVED PROCEDURES.

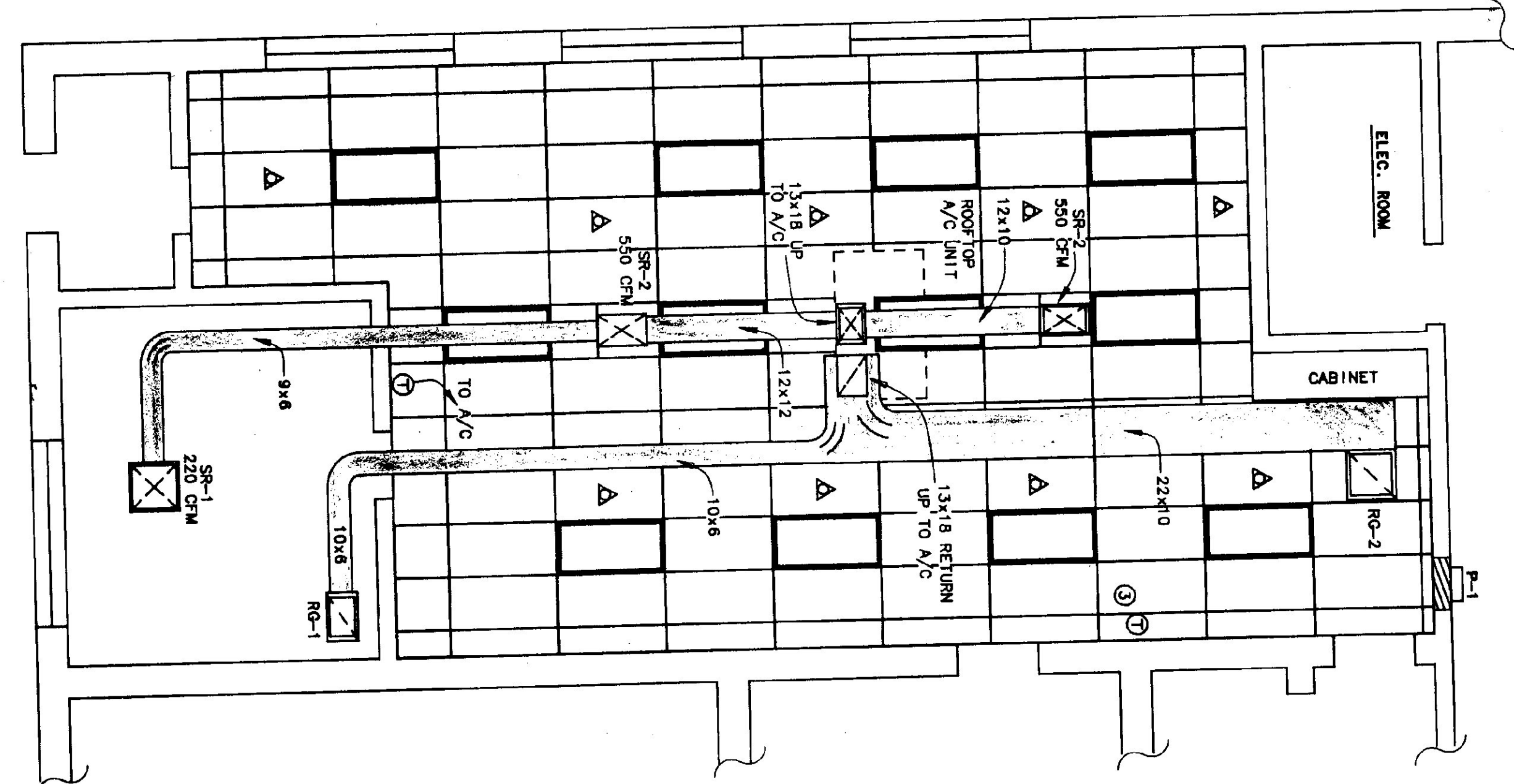
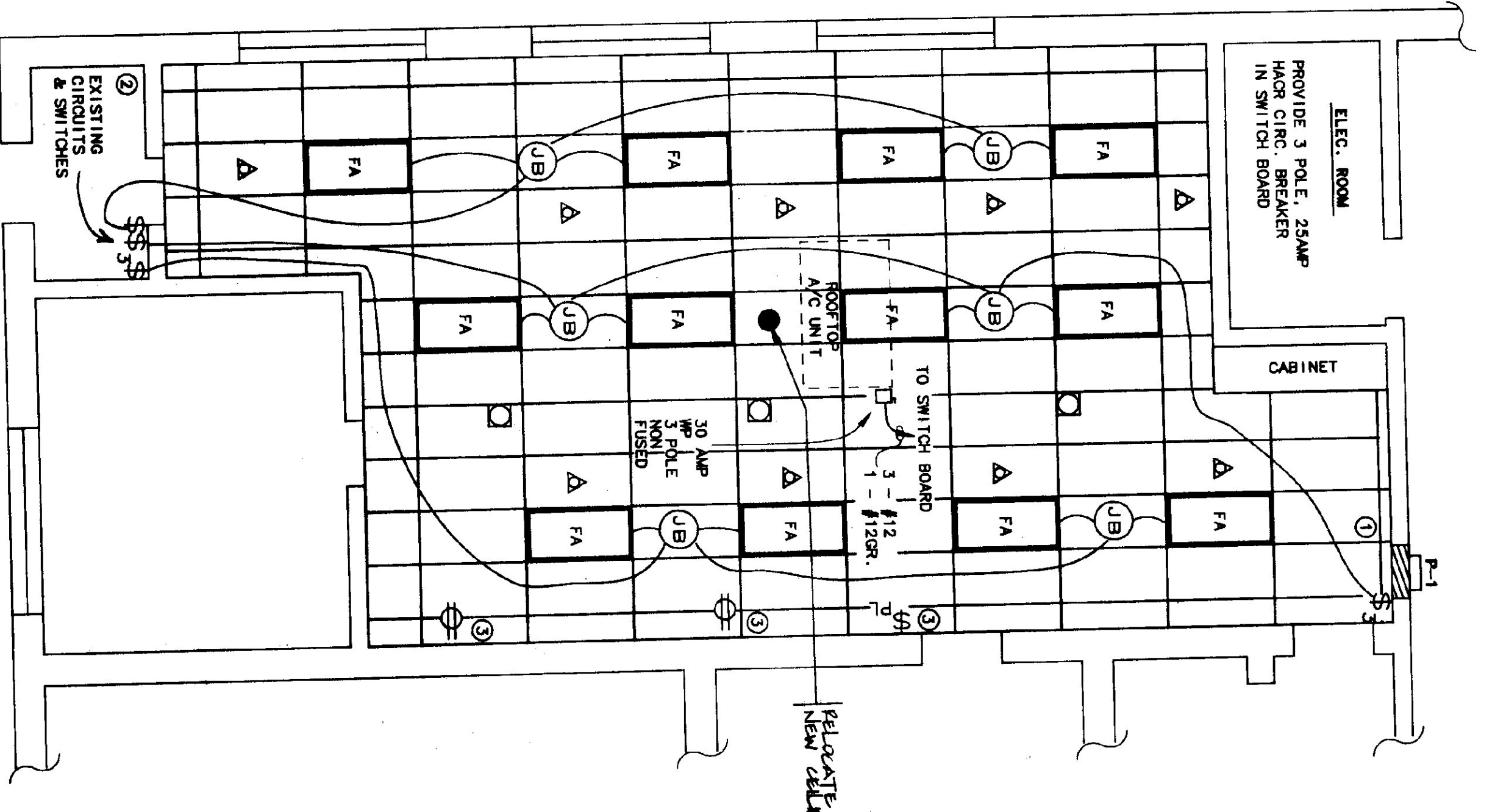
ELECTRIC - REMOVE EXISTING LIGHT FIXTURES IN GENERAL OFFICE AREA. PROVIDE RECESSED LIGHT FIXTURES AND ALL NECESSARY CONDUIT AND WIRE FOR COMPLETE INSTALLATION.

PROVIDE POWER WIRING, WEATHER PROOF SAFETY SWITCH AND CIRCUIT BREAKER FOR ROOF TOP AIR CONDITIONER.

MECHANICAL EQUIPMENT SCHEDULE	
ITEM	DESCRIPTION
A/C	AIR CONDITIONING UNIT, ROOF MOUNTED, LENNOX CHA 16-413, 34,000 BTUH TOTAL COOLING CAPACITY, 9.6 SEER, 208 VOLT, 3 PHASE, WITH FOLDED METAL FIN COILS.
	1. ROOF MOUNTING FRAME, RMF-16-41
	2. ECONOMIZER DAMPERS W/GRAVITY EXHAUST, REND 16 M-41
	3. TWO STAGE THERMOSTAT TB74ET032 (13F09) & SUBBASE 0674C1009 (13F15)

GRILLE & REGISTER SCHEDULE	
ITEM	DESCRIPTION
RG-1	RETURN GRILLE - METAL AIRE SERIES C05, 22x10, OFF WHITE, ALUMINUM
RG-2	SAME AS RG-1 EXCEPT 22x22
SR-1	SUPPLY REGISTER - METAL AIRE SERIES 5000 - M6-05, 54, 9x9, T-BAR MOUNT (24 X 24), W/OBD, OFF-WHITE, EXTRUDED ALUMINUM
SR-2	SUPPLY REGISTER - METAL AIRE SERIES 5000 - M6-05, 54, 12x12, T-BAR MOUNT (24x24), W/OBD, OFF-WHITE, EXTRUDED ALUMINUM

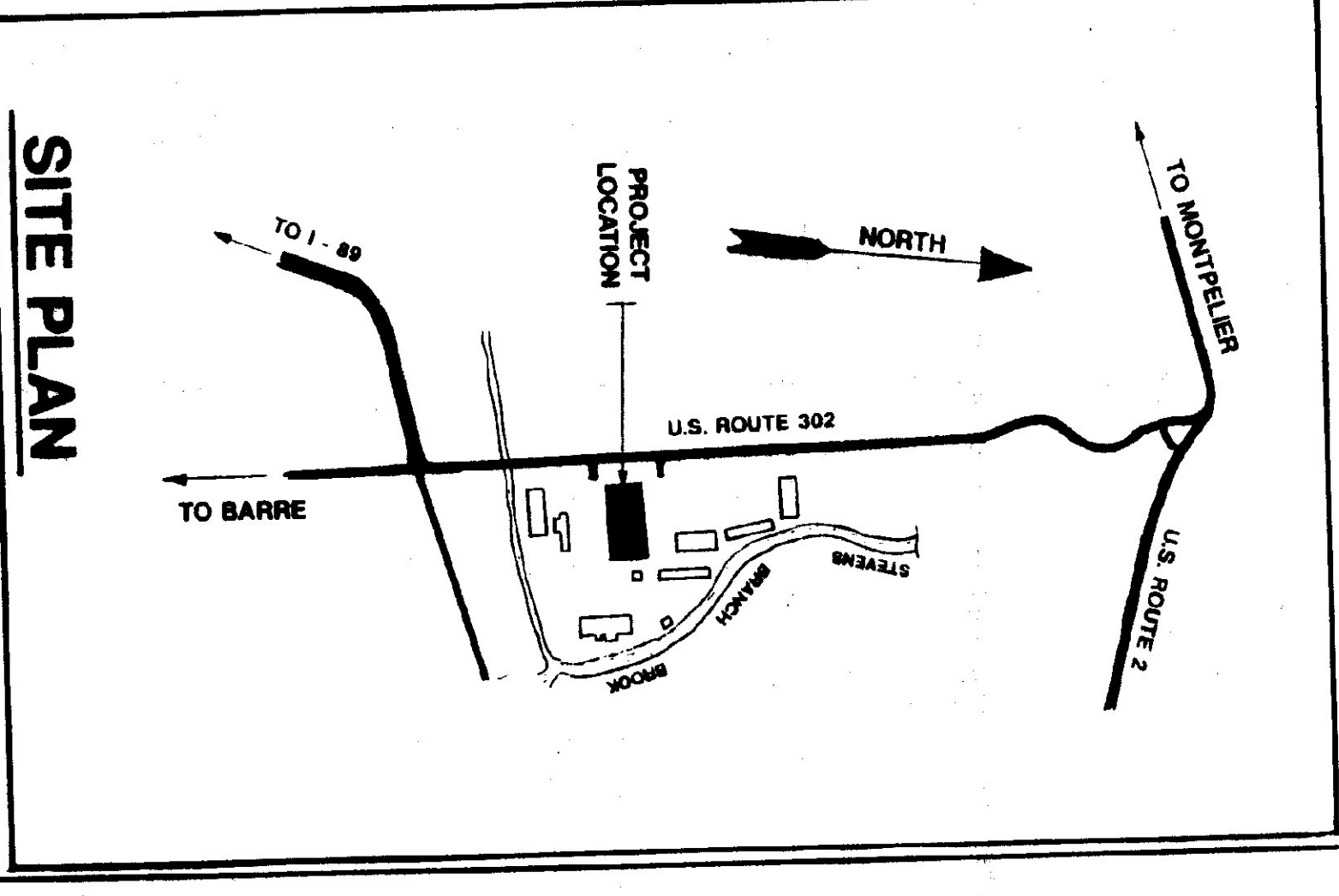
- NOTES:**
- 1) ALL LIGHT FIXTURES TO BE TURNED OVER TO OWNER.
  - 2) PATCHWORK THROUGH ROOF, SETTING OF AC UNIT & FIBER ELEC. CONNECTION TO BE DONE BY THE OWNER.
  - 3) AS-BUILT OF SPRINKLER INSTALLATION MUST BE SUBMITTED TO OWNER & INDUSTRY AND APPROVED BEFORE RELEASE OF PERFORMANCE.
  - 4) PLUMB WORK TO BE INSTALLED TIGHT TO SAVE COST.
  - 5) REMOVE ALL UPPER-FLOOR WIRE & DEVICES. PATCH HOLES TO MATCH EXISTING FLOOR LEVEL.
  - 6) AC UNIT TO BE STORED ON SITE UNTIL SPRINKLER INSTALLATION.



**LEGEND**

FA	FLUORESCENT LIGHT	□	POWER POLE
\$	SWITCH	⊗	SUPPLY REGISTER
\$3	3-WAY SWITCH	⊗	RETURN GRILLE
⊕	DUPLEX OUTLET	⊗	ABOVE FINISHED FLOOR
⊕	FIRE SPRINKLER HEAD	⊗	JUNCTION BOX
⊕	THERMOSTAT	⊗	GROUND
⊕	SAFETY SWITCH	⊗	PILOT LIGHT

**Pederson & Associates**  
 MECHANICAL & ELECTRICAL ENGINEERS  
 P. O. BOX 810 STOWE, VERMONT 05672  
 TEL. (802) 253-9607 FAX (802) 253-9290



STATE OF VERMONT  
 DEPARTMENT OF STATE BUILDINGS  
 AGENCY OF ADMINISTRATION

MONTEPELIER  
 OFFICE RENOVATION PLAN  
 VERMONT AGENCY OF TRANSPORTATION  
 CENTRAL GARAGE

DATE: 11/07/81  
 SCALE: 1/4"=1'-0"  
 REVISIONS: 1/2/81  
 DRAWN BY: B.M.M.  
 APPROVED BY: [Signature]  
 SHEET NO. 2 OF 2