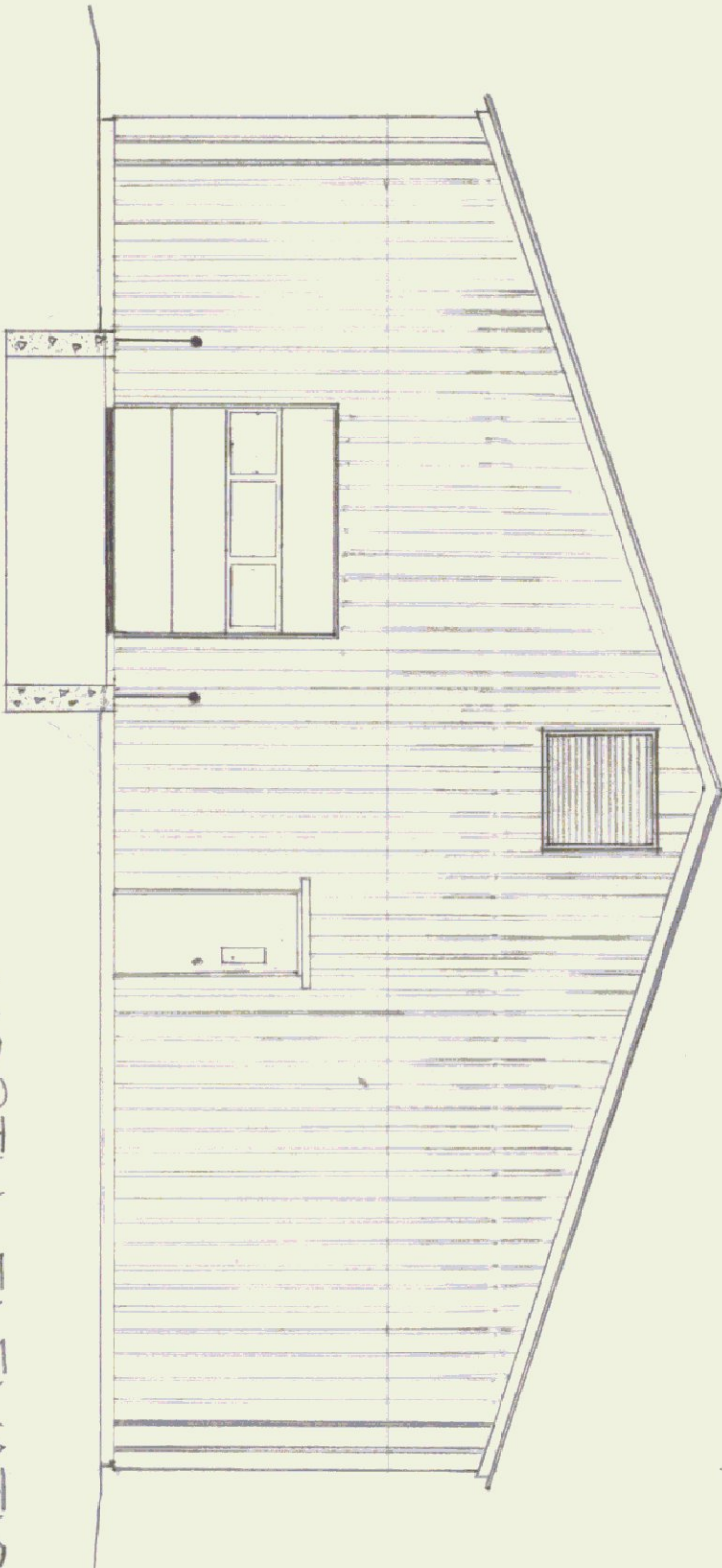


PROPOSED
ADDITION

WEST ELEVATION
1/8" = 1'-0"



NORTH ELEVATION
1/8" = 1'-0"



STATE OF VERMONT DIVISION OF STATE BUILDINGS AGENCY OF ADMINISTRATION MONTPELIER, VERMONT			
PROPOSED ADDITION BERLIN TRAFFIC SHOP BERLIN, VERMONT			
ELEVATIONS			
DATE:	SCALE:	REVISIONS:	DWG. NO.
MAY 1962	1/8" = 1'-0"	JUNE 7, 82 SAR	A-1
DRAWN BY:	APPROVED BY:		
HSG	T. RAKT		
			2 OF 8