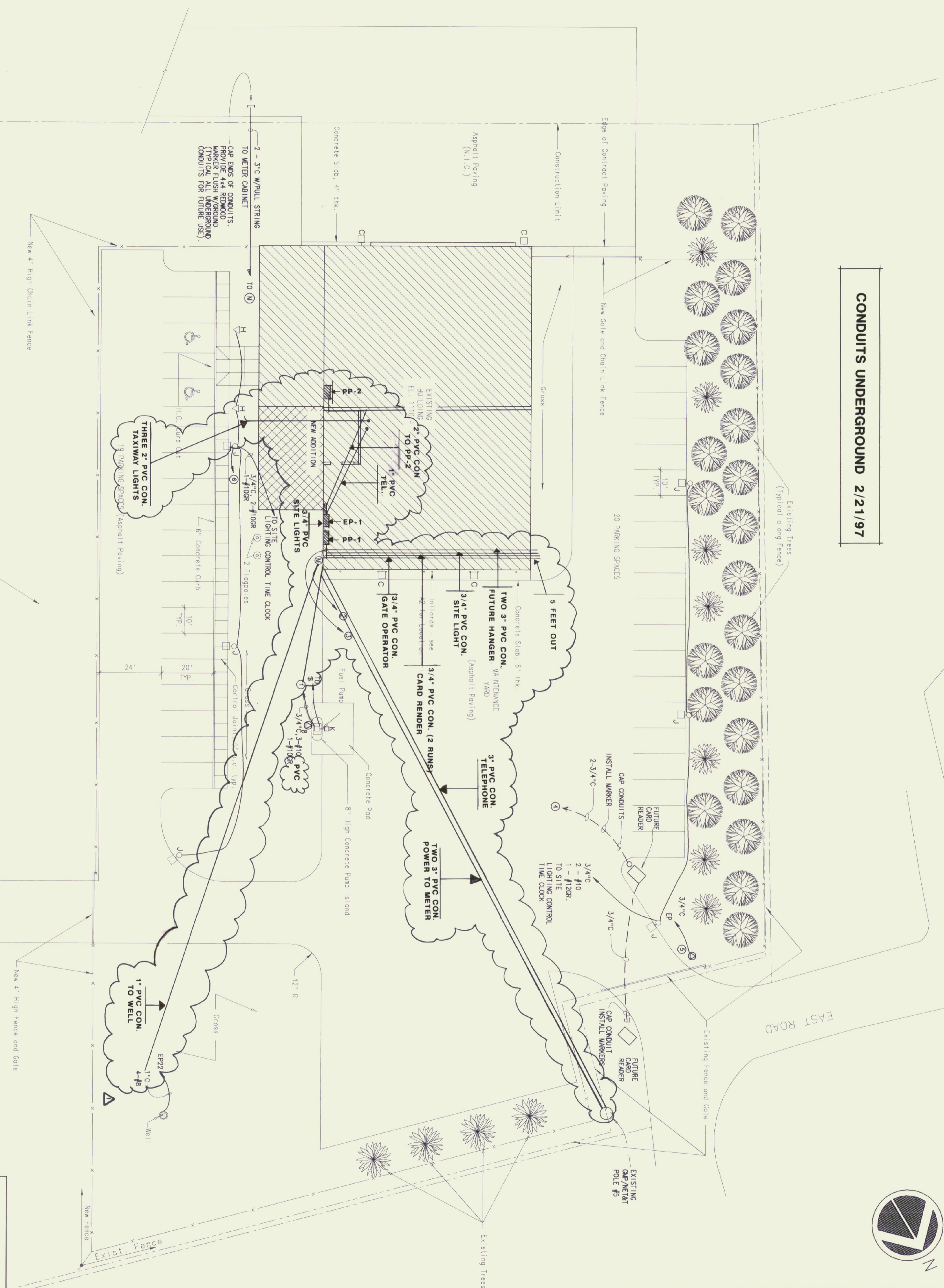


CONDUITS UNDERGROUND 2/21/97



- KEYED NOTES**
- 1 TO SAFETY SWITCH FOR GAS PUMP. ALL WIRING FOR GAS PUMP TO COMPLY WITH NEC ARTICLE 514.
 - 2 UNDERGROUND ELECTRIC SERVICE TO POLE #5. REFER TO ONE-LINE DIAGRAM. CONDUIT MADE WITH GREEN MOUNTAIN POWER CO.
 - 3 2" TELEPHONE CONDUIT WITH PULL WIRE FROM TTB TO POLE #5.
 - 4 QUAN. 2 3/4" CONDUIT W/PULL STRUNG TO ELECTRIC SERVICE BACK BOUND IN GARAGE.
 - 5 3/4" CONDUIT W/PULL STRING FOR FUTURE ELECTRIC GATE. CAP CONDUIT AND PROVIDE REMOVAL MARKER.
 - 6 SUB 3/4" CONDUIT FROM LIGHT FIXTURE BASE THROUGH CONCRETE BASE FOR FUTURE TYPE H.

LEGEND

○	Pole Light
▽	Ground Light
□	Building Mounted Light
---	Property Boundary
---	Construction Limits

Pearson & Associates
MECHANICAL & ELECTRICAL ENGINEERS

Gossens Bachman
Architecture and Interior Design

STATE OF VERMONT
REGISTERED PROFESSIONAL ENGINEER
NO. 5187

P.O. BOX 610 STOWE, VERMONT 05672
TEL. (802) 253-9607 FAX. (802) 253-9290

10 Langdon Street
Montpelier, VT 05602
(802) 254-1041

STATE OF VERMONT
DEPARTMENT OF STATE BUILDINGS
AGENCY OF ADMINISTRATION

VERMONT

Agency of Transportation
HUNTINGTON HANGER
Berlin, Vermont
ELECTRICAL SITE PLAN

MONTPELIER

DATE: 11/11/92	SCALE: 1" = 20'	REVISIONS: 11/14/95	CAD FILE: P-HH-E3	DWG. NO. E-3
DRAWN BY: B.W.M.	APPROVED BY: E.E.P.	AS BUILT	SHEET: OF	



Pearson & Associates
MECHANICAL & ELECTRICAL ENGINEERS

P.O. BOX 610 STOWE, VERMONT 05672
TEL. (802) 253-9607 FAX. (802) 253-9290

Gossens Bachman
Architecture and Interior Design

10 Langdon Street
Montpelier, VT 05602
(802) 254-1041

STATE OF VERMONT
DEPARTMENT OF STATE BUILDINGS
AGENCY OF ADMINISTRATION

VERMONT

Agency of Transportation
HUNTINGTON HANGER
Berlin, Vermont
ELECTRICAL SITE PLAN

MONTPELIER

DATE: 11/11/92	SCALE: 1" = 20'	REVISIONS: 11/14/95	CAD FILE: P-HH-E3	DWG. NO. E-3
DRAWN BY: B.W.M.	APPROVED BY: E.E.P.	AS BUILT	SHEET: OF	