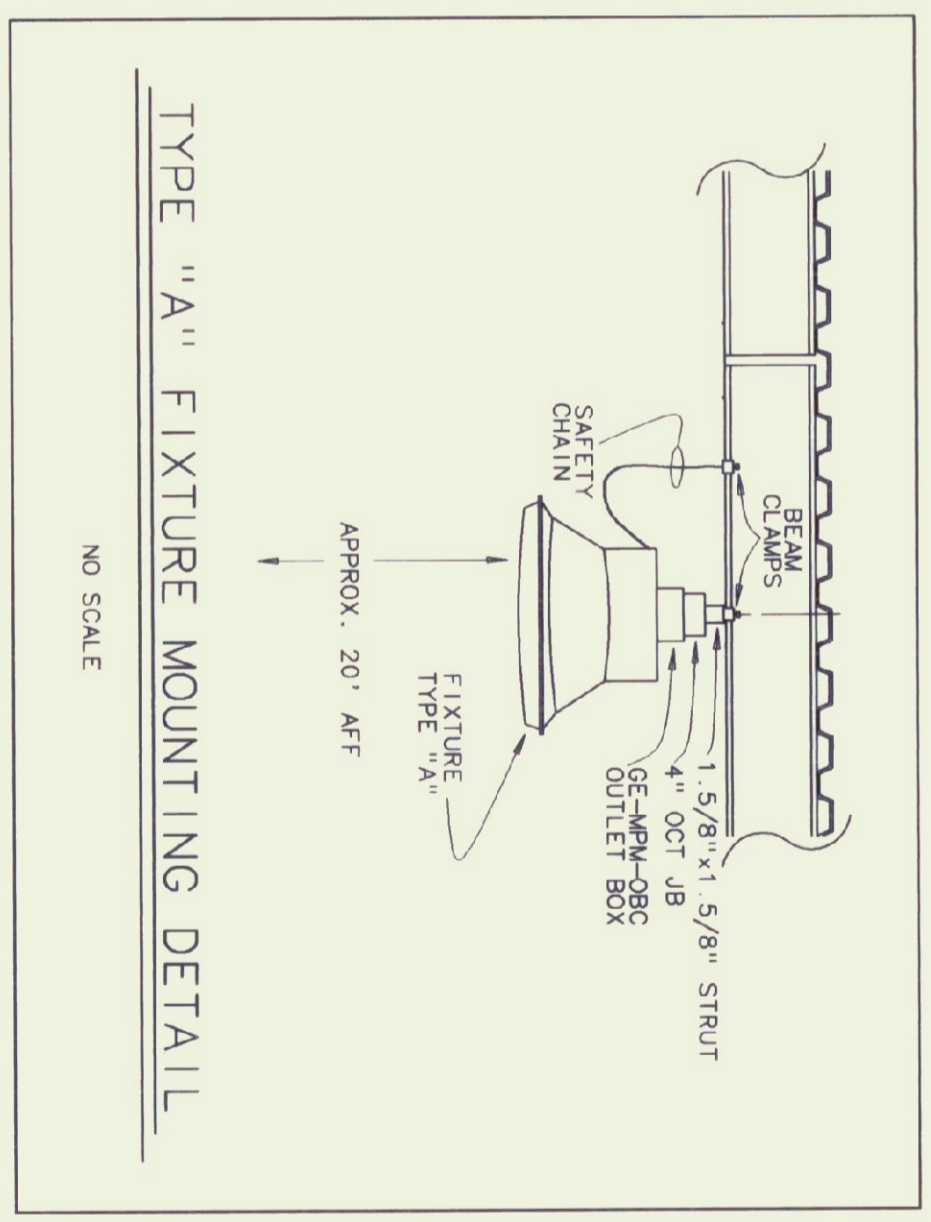
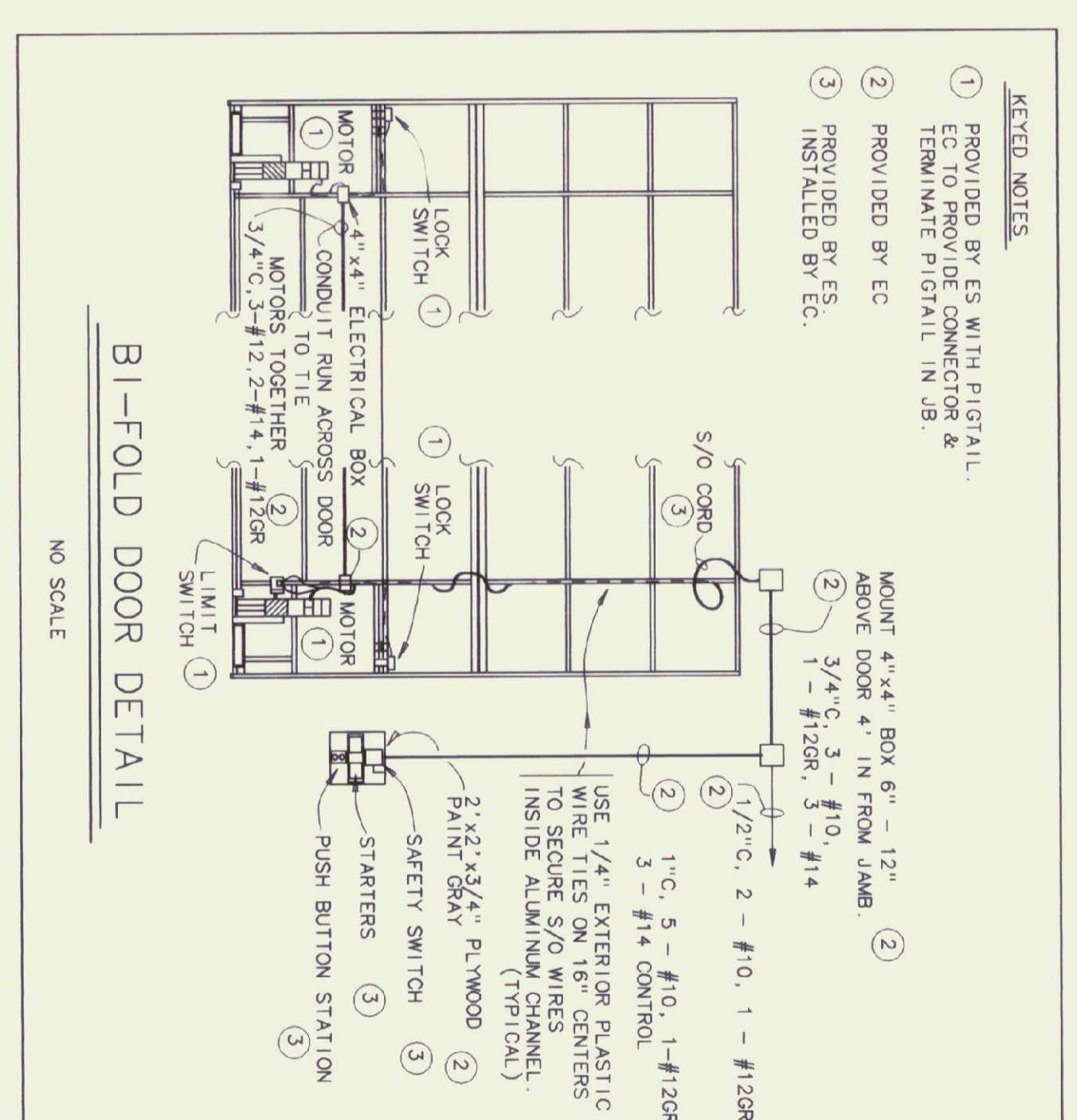


- KEYED NOTES**
- 1 PROVIDED BY ES WITH PIGTAIL. EC TO PROVIDE CONNECTOR & TERMINATE PIGTAIL IN JB.
 - 2 PROVIDED BY EC.
 - 3 INSTALLED BY EC.



SPECIAL PURPOSE OUTLET SCHEDULE

KEY	DESCRIPTION	SUPPLIED BY	INSTALLED BY	COND. EXP. PROVIDED	VOLTS	AMPS	TYPE	STARTER PROVIDED BY	INSTALLED BY	ELECTRICAL DISCONNECT TYPE	PROVIDED BY	REMARKS
01	OVERHEAD DOOR	GC	GC	-	120	10	MAG	ES	EC	20A - 1P	EC	CONTROL WIRING BY EC
02	BI-FOLD DOOR	GC	GC	-	240	10	MAG	MC	EC	30A - 2P	EC	CONTROL WIRING BY EC
03	OIL FURNACE	MC	MC	-	120	5	FLEX CONDUIT	EC	MC	20A - 1P	EC	CONTROL BY MC
04	FUEL OIL TRANSFER PUMP	MC	MC	-	120	10	MAG	EC	EC	20A - 1P	EC	CONTROL BY MC
05	WATER HEATER	PC	PC	-	120	12.5	FLEX CONDUIT	EC	EC	20A - 1P	EC	VARIABLE SPEED CONTROL
06	CEILING FAN	EC	EC	-	120	0.6	NEMA LS-15	EC	EC	SPEED CONTROL	EC	CONTROL BY MC
07	AIR COMPRESSOR	ES	ES	-	240	28	SEALTITE	EC	EC	30A - 2P	EC	CONTROL BY EC
08	FUEL PUMP	ES	ES	-	120	14	EXP. PROOF	EC	EC	30A - 2P	EC	CONTROL BY EC
09	EXHAUST FAN	MC	MC	-	240	10	FLEX CONDUIT	EC	EC	20A - 1P	EC	CONTROL BY EC
10	WELDER OUTLET - 50 AMP	EC	EC	-	6-50R	50	14-50R	EC	EC	14-50R	EC	CONTROL BY EC
11	TRANSFER SWITCH W/RECEPT.	EC	EC	-	14-50R	60	14-50R	EC	EC	14-50R	EC	CONTROL BY EC

- LEGEND**
- LUMINAIRES**
- FLUORESCENT LIGHT
 - FLUORESCENT LIGHT
 - CEILING LIGHT
 - WALL LIGHT
 - EXIT LIGHT - WALL
 - EMERGENCY LIGHT - DOUBLE HEAD
- WALL SWITCHES**
- SWITCH + 50" AFF
 - THREE WAY SWITCH
 - FIREMATIC SWITCH - AT CEILING
 - MANUAL MOTOR STARTER
 - OIL BURNER SAFETY SWITCH
 - SWITCH W/ PILOT LIGHT
 - SWITCH - SPEED CONTROL
- WALL RECEPTACLES**
- DUPLEX OUTLET +42" AFF
 - SPLIT WIRED DUPLEX OUTLET
 - SINGLE SPECIAL PURPOSE OUTLET
- MISCELLANEOUS EQUIPMENT**
- MOTOR STARTER
 - SAFETY SWITCH
 - PUSH BUTTON STATION
 - ELECTRIC PANEL BOARD
 - MOTOR
 - TIME SWITCH
 - BRANCH CIRCUIT
 - ELECTRIC METER
- ABBREVIATIONS**
- AFF ABOVE FINISHED FLOOR
 - EC ELECTRICAL CONTRACTOR
 - ES EQUIPMENT SUPPLIER
 - GC GENERAL CONTRACTOR
 - MC MECHANICAL CONTRACTOR
 - PC PLUMBING CONTRACTOR
 - OMP GREEN MOUNTAIN POWER
 - GR GROUND
 - GRC GALVANIZED RIGID CONDUIT
 - JUNCTION BOX
 - MOD MOTOR OPERATED DAMPER
 - MOL MOTOR OPERATED LOUVER
 - TTB TELEPHONE TERMINAL BOARD



Pearson & Associates
MECHANICAL & ELECTRICAL ENGINEERS
P.O. BOX 610 STONE, VERMONT 05612
TEL. (802) 253-9607 FAX. (802) 253-9290

Gossens Bachman
Architecture and Interior Design
Gossens Bachman, Inc.
18 Langdon Street
Montpelier, VT 05602
(802) 229-1664

STATE OF VERMONT
DEPARTMENT OF STATE BUILDINGS
AGENCY OF ADMINISTRATION
MONTPELIER
VERMONT

Agency of Transportation
HUNTINGTON HANGER
Berlin, Vermont

ELECTRICAL PLANS AND DETAILS

DATE: 11/11/92
DRAWN BY: B.W.M.
SCALE: AS SHOWN
REVISIONS: 11/14/95
APPROVED BY: E.E.P.
CAD FILE: P-HH-E1
SHEET: 6/23/97 AS BUILT
SHEET OF

DWG NO. **E-1**