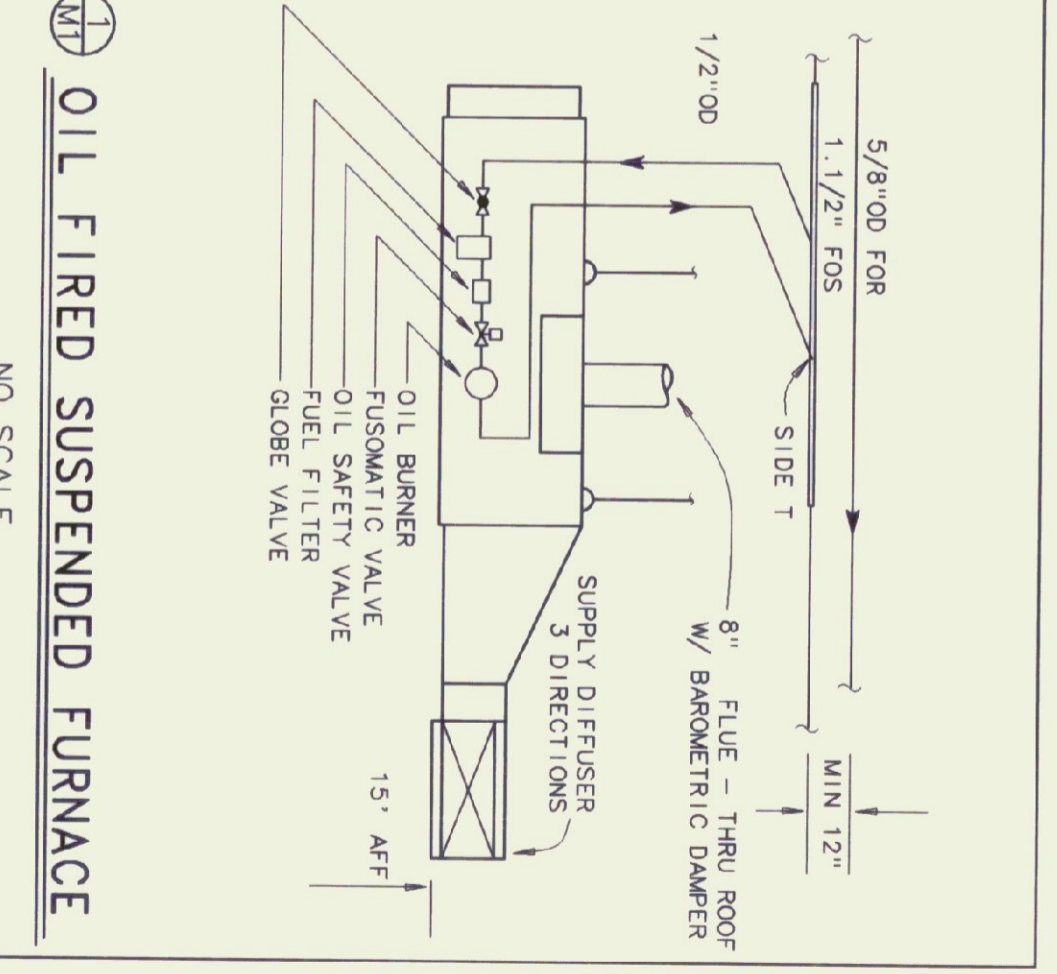
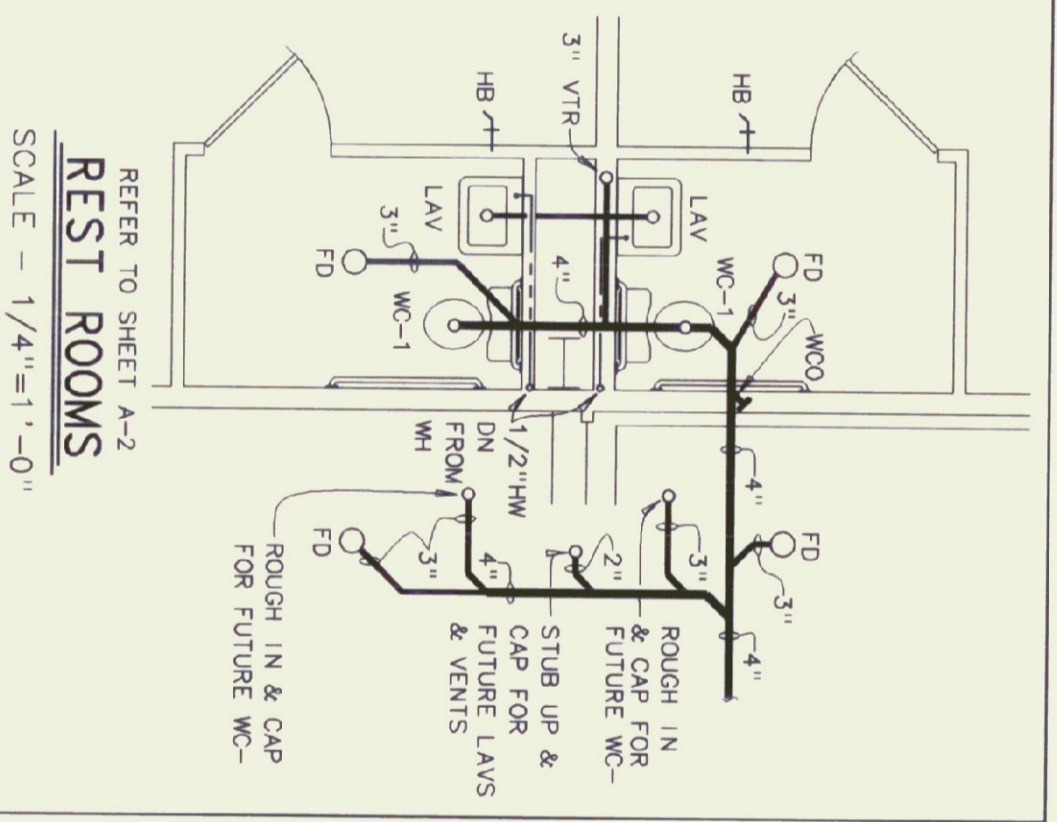
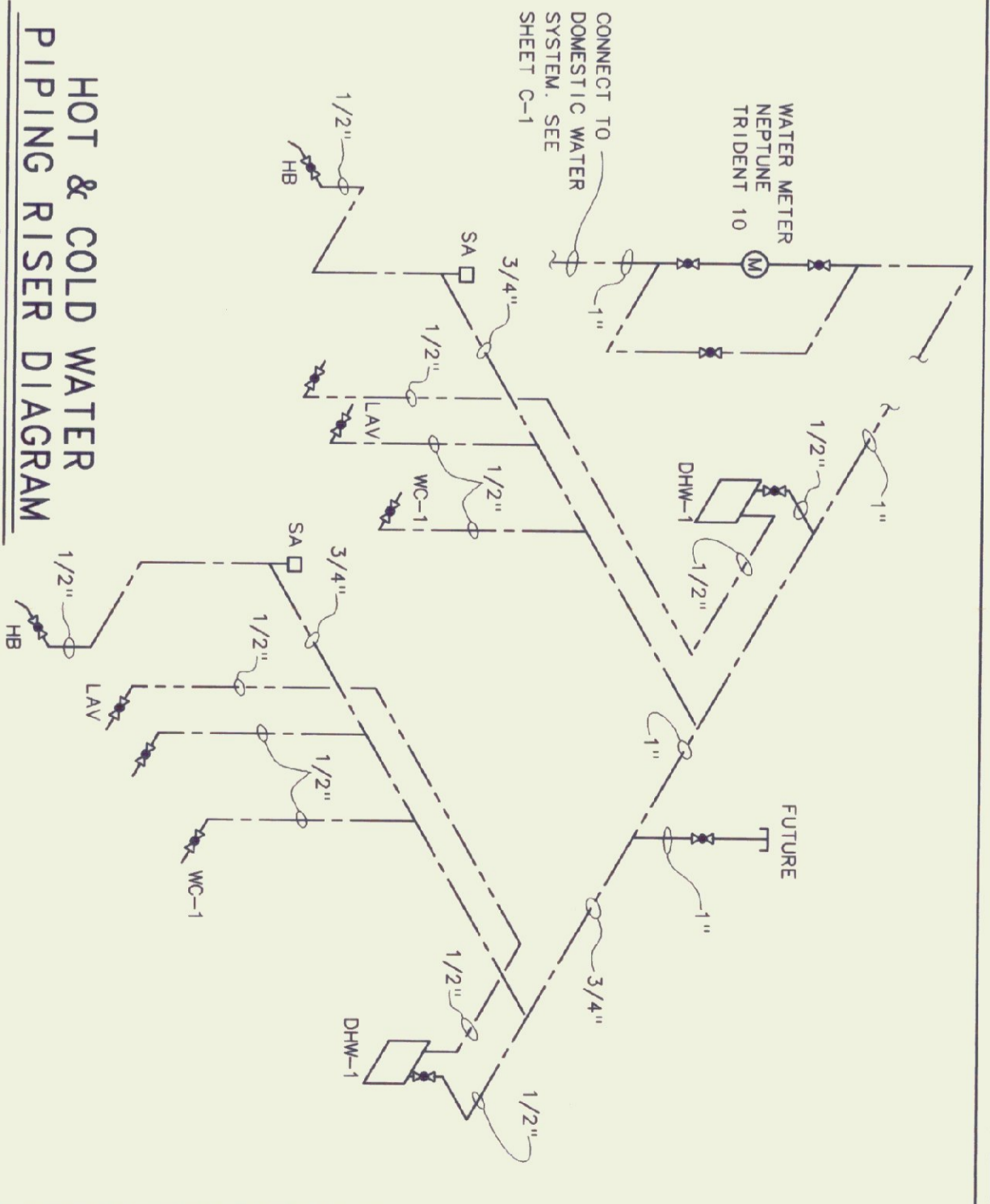


MECHANICAL EQUIPMENT SCHEDULE

KEY	DESCRIPTION
EF-1	EXHAUST FAN, GREENHECK SPEEDO, 1/3HP, 120VAC, 535RPM, 5875CFM, .125" WALL MOUNT COLLAR, MOTOR SIDE GUARD.
F-1	FURNACE, OIL FIRED SUSPENDED, 280MBH INPUT, 224MBH OUTPUT, 2830CFM AIR BANNER, .33 STATIC, 3/4HP@120VAC, RETURN AIR FILTER SECTION, JACKSON & CHURCH MODEL DL-280-523
L1	COMBINATION LIQUID/MOTOR OPERATED DAMPER, 60" WIDE x 12" HIGH, VENT PRODUCTS MODEL 220, EXHAUST ALUMINUM WITH BIRD SCREEN, ADJUST-O-VENT HARDWARE KIT #9027 AND DAMPER COLUMN 120VAC DAMPER ACTUATOR CAT# M418, INSTALL 18" AFF.
L2	SAME AS L-1 EXCEPT 30" WIDE x 30" HIGH.
L3	HOODED WALL CAP, BUILT-IN DAMPER, GREENHECK MODEL 642, 4" DIAMETER ROUND DUCT
P1	FUEL OIL TRANSFER PUMP, 25 GAL./HR. @ 100 PSI, 120VOLT, 1 PHASE, W/GAUGE SET, CHECK VALVE, RELIEF VALVE, BY PASS, BACKPRESSURE REGULATOR, DUPLEX STRAINER, LEVER GATE VALVE W/VISIBILE LINK, MOTOR STARTER AND HOSES HOUR METER, PREFERRED UTILITIES MANUFACTURER COPP. OR EQUAL, DOUBLE FOOT POPPET VALVE IN TANK, PREFERRED UTILITIES TYPE 22 OR EQUAL, PROVIDE VACUUM GAUGE W/SHUT-OFF AT PUMP INLET.
SD	SUPPLY DIFFUSER, DOUBLE DEFLECTION, SIZE 24"W x 12"H, Hvy DTY ALUMINUM 4.3/8" DEEP WITH OPPOSED BLADE DAMPER, METALALIRE H4154.

PLUMBING FIXTURE SCHEDULE

ITEM	MANUFACTURER & MODEL	TRIM & ACCESSORIES	CONNECTION SIZES			REMARKS
			WASTE	VENT	CW	
WH	ARISTON POINT OF USE DOMESTIC WATER HEATER 2.5 GAL., 120 VOLT 1350 WATTS, MODEL P-10S	3/4" PRESSURE RELIEF VALVE			1/2"	PROVIDE PAN UNDER WATER HEATER. INSTALL ABOVE CEILING.
FD	FLOOR DRAIN MADE #M-1102-STD-5	VACUUM BREAKER BACKFLOW PREVENTER	2"	2"		
HB	WOODFORD 24P				1/2"	
LAV	AMERICAN STANDARD COMPACT LAVATORY CAT# 0124 024, 4" CENTERS	AM. STD. #2385.002 W/GRID DRAIN SUPPLIES WITH STOP 1.1/4" TRAP - OFFSET	1-1/4"	1-1/2"	1/2"	WHITE TRUBRO LAV-GUARD INSULATION KIT #102MH/105W
SA	SHOCK ABSORBER	MADE W-5	4"	2"	3/4"	
WC-1	AMERICAN STANDARD NEW CADET 18" RIM, ELONGATED ASSI STD. CAT# 2168.128	SEAT - OLSONITE #95 OPEN FRONT - LESS COVER			3/8"	



STATE OF VERMONT
 DEPARTMENT OF STATE BUILDINGS
 AGENCY OF ADMINISTRATION
 VERMONT

Agency of Transportation
 HUNTINGTON HANGER
 Berlin, Vermont
 MECHANICAL PLANS AND DETAILS

DATE: 11/11/92
 DRAWN BY: B.W.M.
 SCALE: AS SHOWN
 APPROVED BY: E.E.P.
 REVISIONS: 11/14/95
 CAD FILE: P-HH-M1
 SHEET: M-1



Pearson & Associates
 MECHANICAL & ELECTRICAL ENGINEERS
 P.O. BOX 610 STOWE, VERMONT 05672
 TEL. (802) 253-9607 FAX. (802) 253-9290

Gossens Bachman
 Architecture and Interior Design
 Gossens Bachman, Inc.
 18 Langdon Street
 Montpelier, VT 05602
 (802) 228-1864