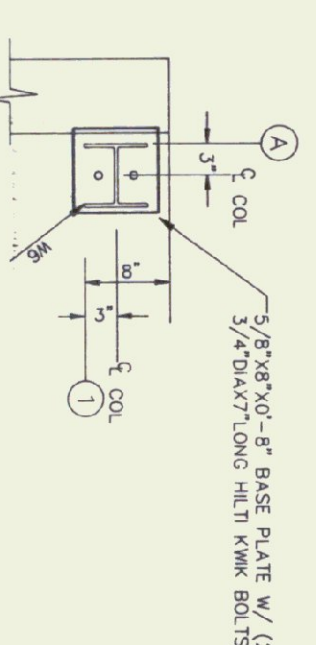


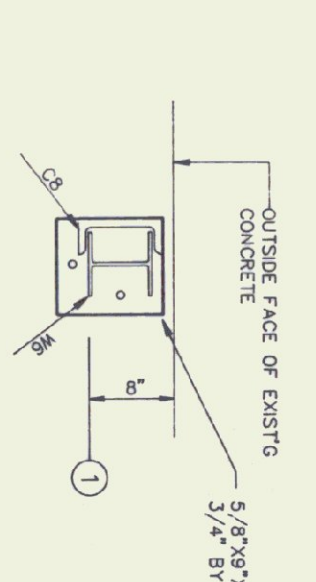
FOUNDATION PLAN

SCALE: 1/8"=1'-0"

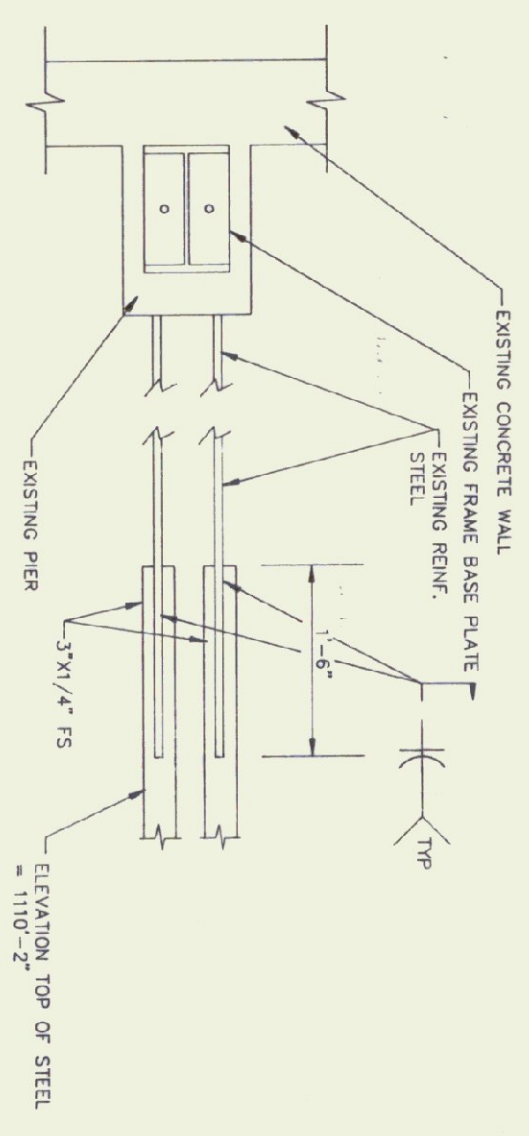
1. NEW SLAB-ON-GRADE TO BE 5" THICK REINFORCED WITH #4'S AT 16" O.C. TOP. ELEV. TOP OF SLAB = 1110'-5"
2. --- INDICATES A CONSTRUCTION JOINT. SEE DETAIL THIS SHEET.
3. --- INDICATES A SAWED CONTROL JOINT. SEE DETAIL THIS SHEET.
4. --- INDICATES A KEVED CONTROL JOINT. SEE DETAIL THIS SHEET.



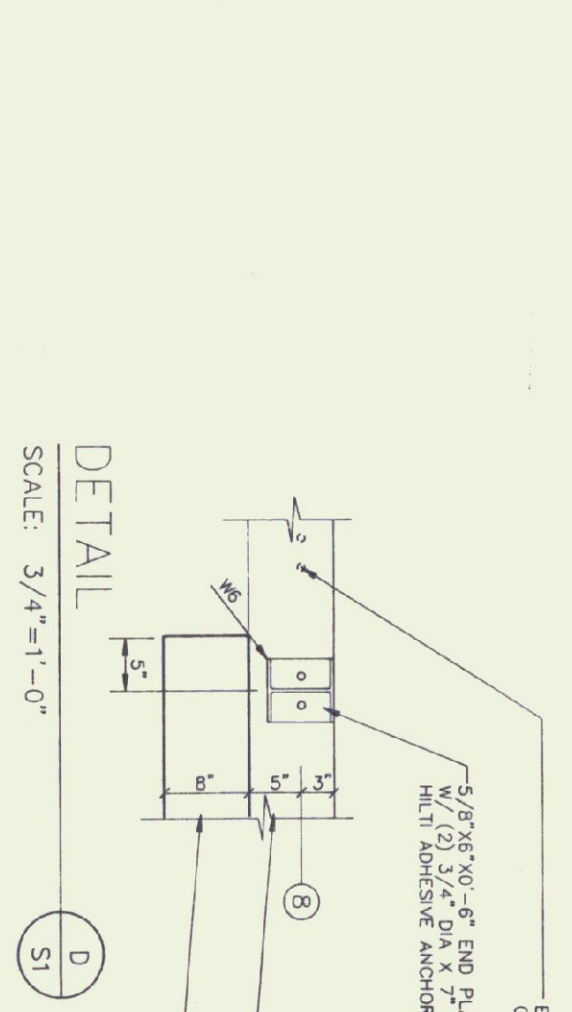
DETAIL A
SCALE: 3/4"=1'-0"
1. DETAIL SHOWN AT B-1



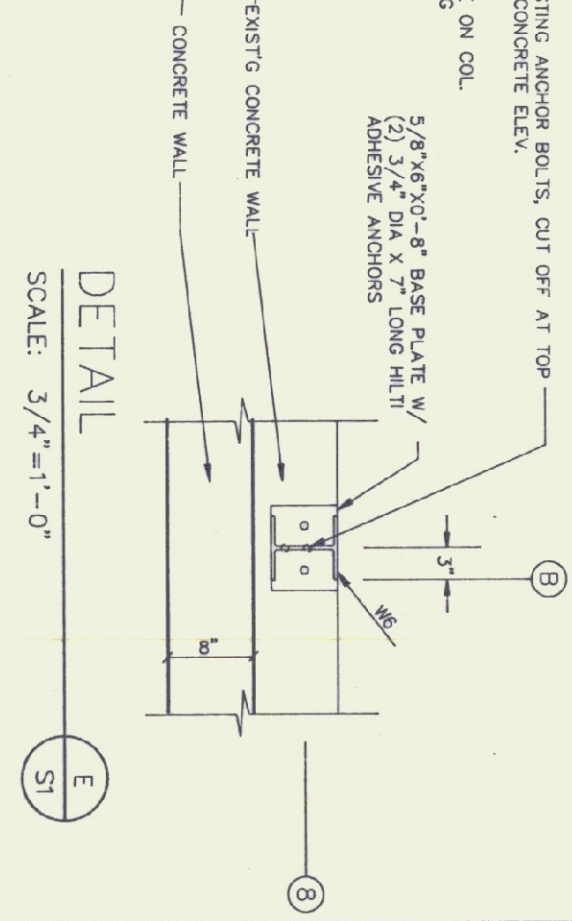
DETAIL B
SCALE: 3/4"=1'-0"
TYPICAL ON LINE 1



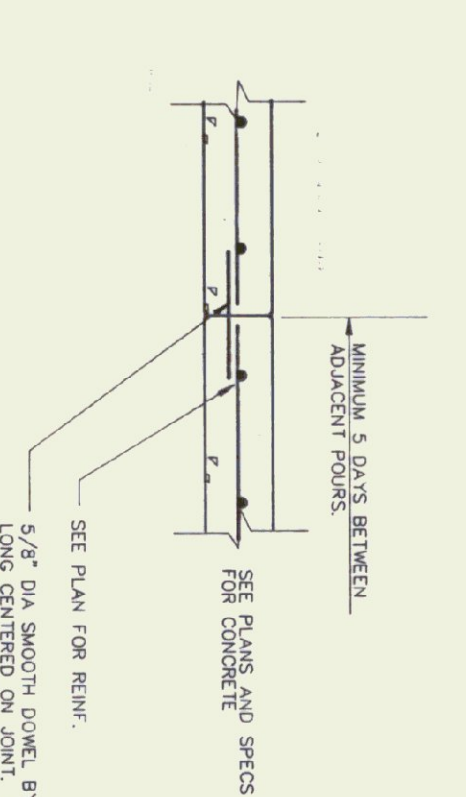
DETAIL C
SCALE: 3/4"=1'-0"



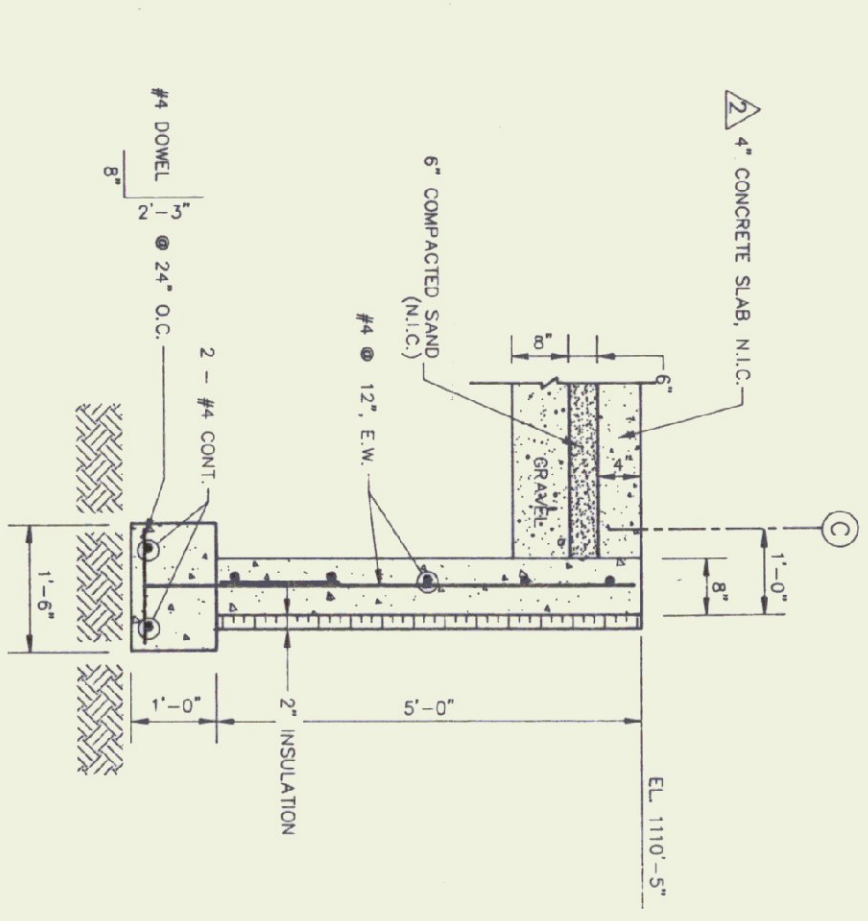
DETAIL D
SCALE: 3/4"=1'-0"



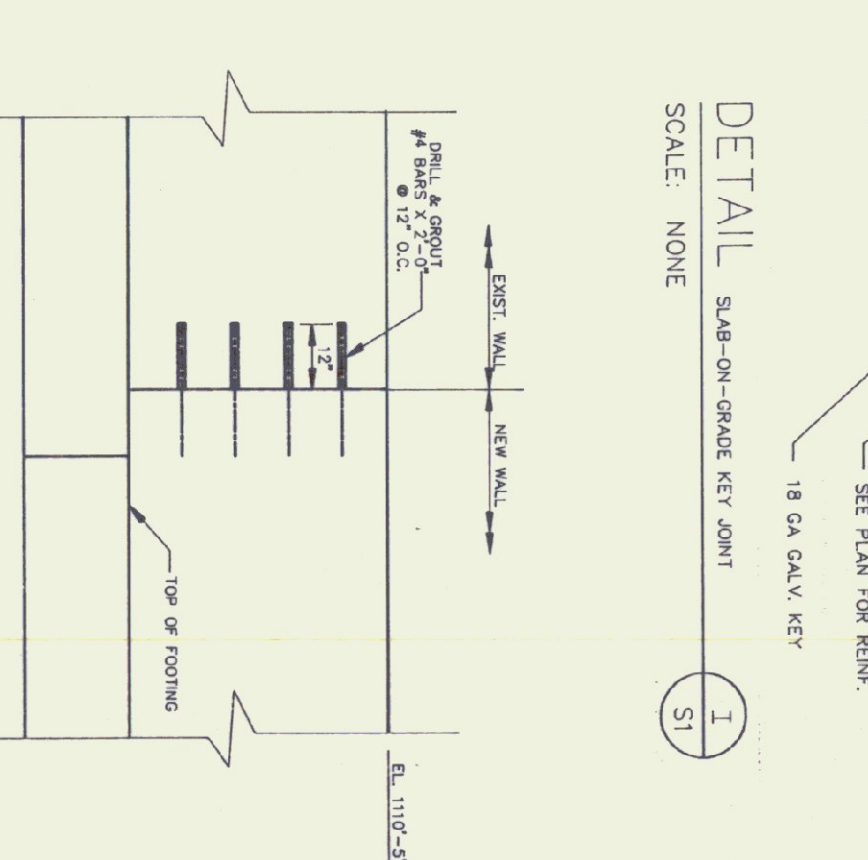
DETAIL E
SCALE: 3/4"=1'-0"



DETAIL F
SCALE: NONE



SECTION
SCALE: NONE

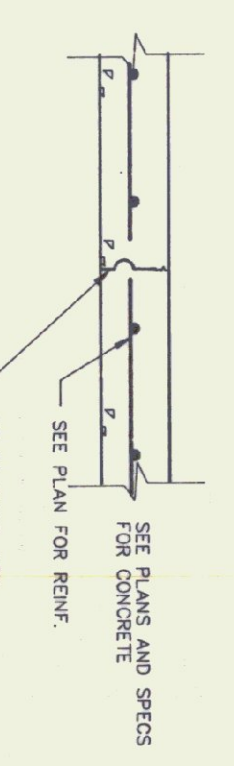


ELEVATION
SCALE: NONE

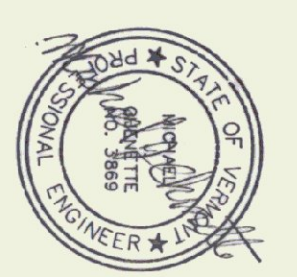
- NOTES**
1. FOR DETAILS A, THERE IS ANY COMPONENT NOT LABELED BY CONTRACTOR.
 2. ELEVATION OF BOTTOM OF BASE PLATE = 1110'-6"
 3. PROVIDE STEEL SHIMS FOR ALL BASE PLATES & LEVEL ASSEMBLY. FASTENERS SHALL BE 1/2" DIA. A307 STEEL AND GROUT 1" UNDER BASE PLATES WITH A NON-SHINK GROUT.

NOTE:
JOINTS ARE TO BE SAWED AS SOON AS THE CONCRETE IS SHOWN ENOUGH NOT TO BE TORN OR DAMAGED BUT PRIOR TO REMOVAL OF FORMS.

DETAIL G
SCALE: NONE



DETAIL I
SCALE: NONE



Gossens Bachman
Architecture and Interior Design
Gossens Bachman, Inc.
50 Main Street
Montpelier, Vermont 05602
(802) 228-1664

CEI
Chenette
Engineering, Inc.
7 Main Street
Montpelier, Vermont 05602
(802) 228-1642

Project Title:
Agency of Transportation:
Huntington
Hangar
Berlin, Vermont
AIR-04-9076

Revisions:
7/7/95 OFFICE AREA ADDITION
18 OCT 1995 CONC. SLAB, MISC. NOTES
20 NOV 1996 CONC. APRON

Job Number:
Drawn By: CEI
Checked By: CEI
Scale: as noted
Date: Nov. 11, 1992
Sheet Title:
Foundation Plan

Sheet Number:
S1
©Gossens Bachman, Inc.