

STATE OF VERMONT  
AGENCY OF TRANSPORTATION

# HUNTINGTON HANGAR

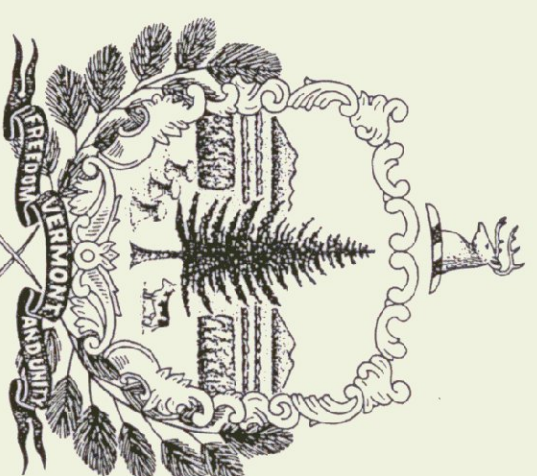
OFFICE FIT-UP

EDWARD F. KNAPP STATE AIRPORT  
BERLIN, VERMONT

November 1996

DEPARTMENT OF BUILDINGS  
AND GENERAL SERVICES  
2 GOVERNOR AIKEN AVENUE  
MONTPELIER, VERMONT

JOHN J. ZAMPIERI, COMMISSIONER



HOWARD DEAN, MD.  
GOVERNOR

AGENCY OF TRANSPORTATION  
133 STATE STREET  
MONTPELIER, VERMONT  
GLENN GERSHANECK, SECRETARY

ARCHITECTS:

**GOSSENS BACHMAN, INC.**  
18 LANGDON STREET  
MONTPELIER, VERMONT 05602  
(802) 229-1664

ARCHITECTURAL DRAWINGS:

A1 FLOOR PLAN AND SCHEDULES  
A2 SECTIONS AND DETAILS  
A3 REFLECTED CEILING PLAN  
AND INTERIOR ELEVATIONS

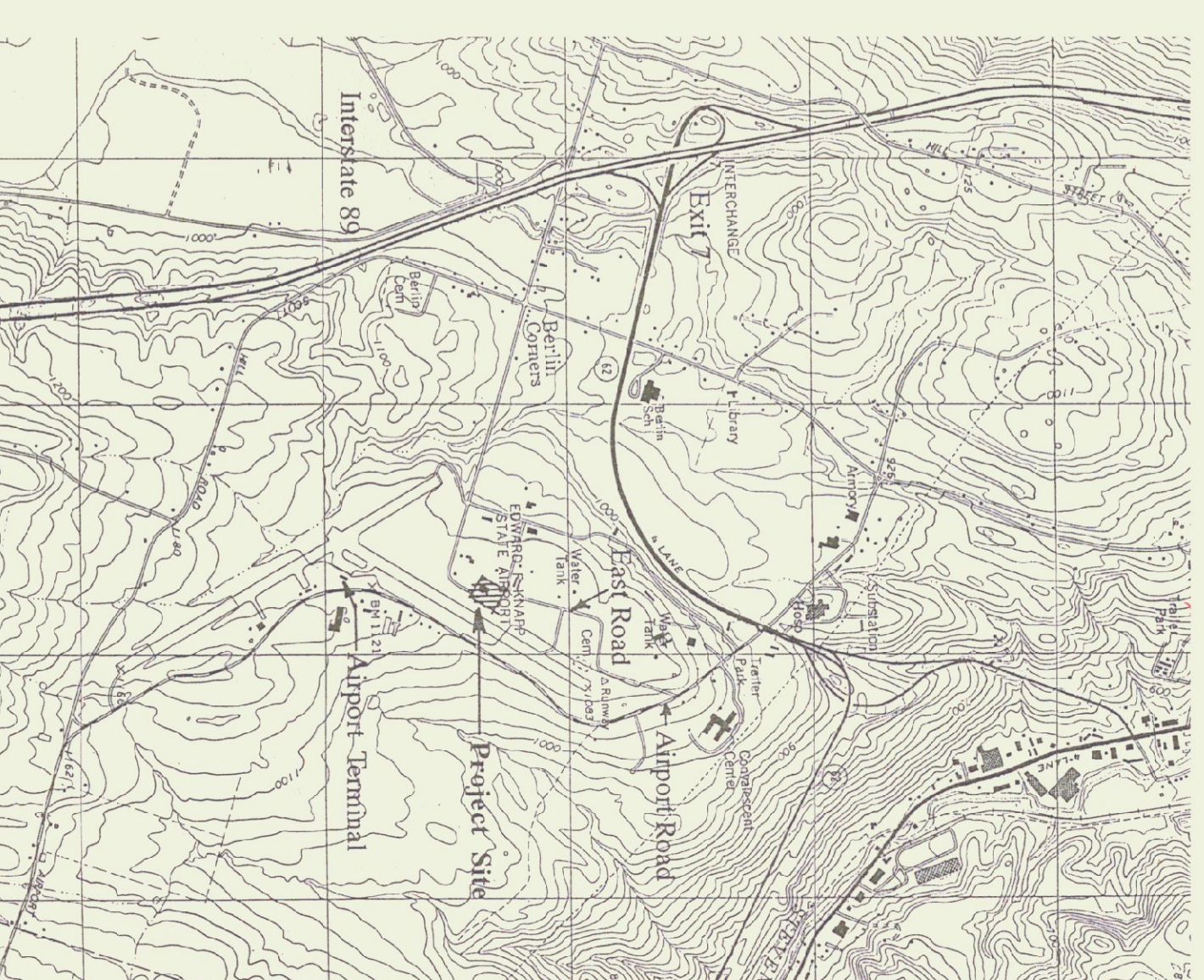
MECHANICAL/ ELECTRICAL ENGINEER:

**PEARSON & ASSOCIATES**  
P.O. BOX 610  
STOWE, VERMONT  
(802) 253-9607

MECHANICAL AND ELECTRICAL DRAWINGS:

M1 OFFICE AREA HVAC PLAN  
P1 OFFICE AREA PLUMBING PLAN  
E1 OFFICE AREA LIGHTING PLAN  
E2 OFFICE AREA POWER PLAN

LOCATION MAP



### WINDOW SCHEDULE

NO.	TYPE	MANUFACTURER	UNIT NO.	R. O. SIZE (W. X H.)	FINISH	DETAILS	REMARKS
H	SLIDING GLASS, WOOD FRAME	KNAPE AND VOIGT	P992 ZC	36" X 48"	WHITE ENAMEL	12/A2	TEMPERED GLASS (BOTH PANE)

### DOOR SCHEDULE

NO.	TYPE	SIZE (W. X H. X T.)	EXISTING	FINISH	FRAME	DETAILS	HOUR	SET	FLIRE RIG.	REMARKS
6	RE-USE EXIST.									
14	FLUSH STEEL	3'-0" X 7'-0" X 1 1/4"	PAINT	PAINT	H-M	14/A2 S.W.	5	7	45 MIN.	EXIST. DOOR, NEW FRAME
15	FLUSH WOOD	3'-0" X 7'-0" X 1 1/4"	FACTORY	FACTORY	H-M	14/A2 S.W.	7	7	80 MIN.	WITH INTEGRAL SIDELITE FRAME
16	FLUSH WOOD	3'-0" X 7'-0" X 1 1/4"	FACTORY	FACTORY	H-M	9,10,13,14/A2	4	4		WITH INTEGRAL SIDELITE FRAME
17	FLUSH WOOD	3'-0" X 7'-0" X 1 1/4"	FACTORY	FACTORY	H-M	14/A2	4	4		WITH INTEGRAL SIDELITE FRAME
18	FLUSH WOOD	3'-0" X 7'-0" X 1 1/4"	FACTORY	FACTORY	H-M	9,10,13,14/A2	3	3		WITH INTEGRAL SIDELITE FRAME
19	FLUSH WOOD	3'-0" X 7'-0" X 1 1/4"	FACTORY	FACTORY	H-M	9,10,13,14/A2	1	1		WITH INTEGRAL SIDELITE FRAME
20	FLUSH WOOD SLIDING	5'-4" X 7'-0" X 3/4"	FACTORY	FACTORY	H-M	14/A2	6	6		WITH INTEGRAL SIDELITE FRAME
21	FLUSH WOOD	3'-0" X 7'-0" X 1 1/4"	FACTORY	FACTORY	H-M	14/A2	2	2		WITH INTEGRAL SIDELITE FRAME
22	FLUSH WOOD	3'-0" X 7'-0" X 1 1/4"	FACTORY	FACTORY	H-M	14/A2	2	2		WITH INTEGRAL SIDELITE FRAME
25	FLUSH WOOD	3'-0" X 7'-0" X 1 1/4"	FACTORY	FACTORY	H-M	9,10,13,14/A2	1	1		WITH INTEGRAL SIDELITE FRAME
26	FLUSH WOOD	4'-8" X 7'-0" X 1 1/4"	FACTORY	FACTORY	H-M	9,10,13,14/A2	1	1		WITH INTEGRAL SIDELITE FRAME
27	FLUSH WOOD SLIDING	3'-0" X 7'-0" X 3/4"	FACTORY	FACTORY	H-M	14/A2	6	6		WITH INTEGRAL SIDELITE FRAME
28	FLUSH WOOD	3'-0" X 7'-0" X 1 1/4"	FACTORY	FACTORY	H-M	14/A2	3	3		WITH INTEGRAL SIDELITE FRAME
29	FLUSH STEEL	4'-0" X 6'-8" X 1 3/4"	PAINT	PAINT	H-M	14/A2 S.W.	4	4	45 MIN.	

- NOTES:
- PROVIDE TEMPERED GLASS FOR ALL DOOR AND SIDELITE UNITS.
  - FRAME TO BE 2" H.M. FACE FRAME AND RATED TO MATCH DOOR WHERE NOTED.
  - DOORS 7 THRU 12 ARE NOT IN THIS CONTRACT.

### PARTITION TYPES

- 5/8" TYPE X GYPSUM BOARD BOTH SIDES OF STEEL STUDS (3 5/8" 24" O.C. UNLESS NOTED OTHERWISE). EXTEND PARTITION TO UNDERSIDE OF ROOF DECK AT CORRIDOR WALLS.
- SAME AS TYPE 1, WITH 3" ACOUSTIC BATT INSULATION, EXTEND PARTITION TO UNDERSIDE OF ROOF DECK.
- 5/8" TYPE X GYPSUM BOARD ON METAL FRAMING CHANNELS BOTH SIDES OF EXIST. CAUL WALL. EXTEND PARTITION TO UNDERSIDE OF ROOF DECK.
- EXISTING FRAMING AND ONE SUE FINISH PROVIDE RESISTANT CHANNELS WITH "U" TYPE WAPOR BARRIER AND 1 LAYER 5/8" TYPE X GYP. BD. ON INDICATED SIDE.
- 5/8" TYPE X GYPSUM BOARD EXH. SUE. 5/8" THE REINFORCED TREATED FLOOR UNDER STUDS (3 5/8" 24" O.C. UNLESS NOTED OTHERWISE). EXISTING WALL NO WORK REQUIRED.

### GENERAL NOTES

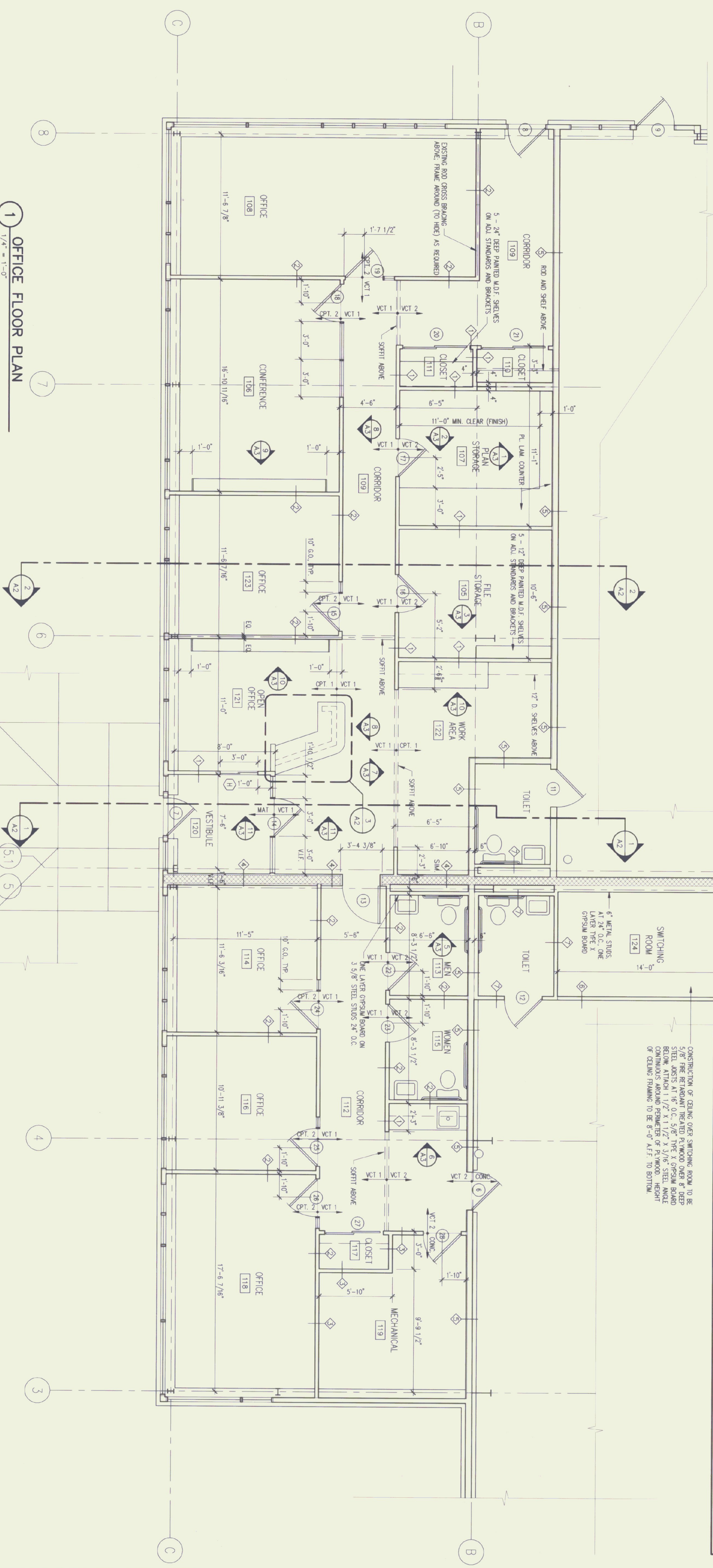
- ALL DIMENSIONS ARE FROM FACE OF STUD UNLESS INDICATED OTHERWISE.
- DO NOT SCALE DIMENSIONS FROM DRAWINGS. VERIFY CRITICAL DIMENSIONS. IN THE CASE OF MISSING OR CONFLICTING DIMENSIONS, CONTACT THE ARCHITECT.
- PROVIDE BLOCKING IN WALLS TO ACCEPT GRAB BARS, HANDRAILS, CLOSET RODS, ETC.
- ALL WORK SHALL BE PERFORMED IN ACCORDANCE WITH STATE AND LOCAL CODES AND ORDINANCES.
- THE GENERAL CONTRACTOR SHALL THOROUGHLY CLEAN THE PREMISES AT COMPLETION OF WORK AND LEGALLY DISPOSE OF ANY EXCESS MATERIAL OFF-SITE.
- EXISTING FLOOR SLAB TO BE PATCHED, FLETED, AND GROUND SMOOTH OR OTHERWISE PREPARED TO ACCOMMODATE FLOOR FINISHES AS REQUIRED TO MEET FLOOR FINISH INSTALLATION SPECIFICATION.
- ALL EXPOSED STEEL MEMBERS ARE TO BE SCAFFOLD PROTECTED, PAINTED & PAINTED.

### ROOM FINISH SCHEDULE

NO.	ROOM NAME	FLOOR FINISH	BASE	WALLS	CEILING	REMARKS
105	FILE STORAGE	V.C.T.	RUBBER	PAINT	AC. TILE	N/A
106	CONFERENCE	V.C.T.	RUBBER	PAINT	AC. TILE	N/A
107	PLAN STORAGE	V.C.T.	RUBBER	PAINT	AC. TILE	N/A
108	OFFICE	V.C.T.	RUBBER	PAINT	AC. TILE	N/A
109	CORRIDOR	V.C.T.	RUBBER	PAINT	AC. TILE	N/A
110	CLOSET	V.C.T.	RUBBER	PAINT	AC. TILE	N/A
111	CORRIDOR	V.C.T.	RUBBER	PAINT	AC. TILE	N/A
112	OFFICE	V.C.T.	RUBBER	PAINT	AC. TILE	N/A
113	OFFICE	V.C.T.	RUBBER	PAINT	AC. TILE	N/A
114	OFFICE	V.C.T.	RUBBER	PAINT	AC. TILE	N/A
115	OFFICE	V.C.T.	RUBBER	PAINT	AC. TILE	N/A
116	OFFICE	V.C.T.	RUBBER	PAINT	AC. TILE	N/A
117	CLOSET	V.C.T.	RUBBER	PAINT	AC. TILE	N/A
118	OFFICE	V.C.T.	RUBBER	PAINT	AC. TILE	N/A
119	MECHANICAL	V.C.T.	RUBBER	PAINT	AC. TILE	N/A
120	VESTIBULE	V.C.T.	RUBBER	PAINT	AC. TILE	N/A
121	OFFICE	V.C.T.	RUBBER	PAINT	AC. TILE	N/A
122	WORK AREA	V.C.T.	RUBBER	PAINT	AC. TILE	N/A
123	OFFICE	V.C.T.	RUBBER	PAINT	AC. TILE	N/A
124	SWITCHING ROOM	V.C.T.	RUBBER	PAINT	AC. TILE	N/A

- FINISH NOTES:
- PROVIDE TWO WALL-TO-WALL FLOOR MATS THIS ROOM (SEE SPECIFICATIONS.)
  - SEE FLOOR PLAN FOR CARPET AND V.C.T. COLOR AND YOU MATERIALS.

CONSTRUCTION OF CEILING OVER SWITCHING ROOM TO BE STEEL DECK WITH 1" REINFORCED FLOOR OVER 8" DEEP STEEL BEAMS AT 16" O.C. WITH 1" REINFORCED FLOOR BELOW AT 11 1/2" X 11 1/2" X 3/16" STEEL AND CONTINUOUS AROUND PERIMETER OF PL. WOOD. HEIGHT OF CEILING FRAMING TO BE 8'-0" AFF. TO BOTTOM.



1 OFFICE FLOOR PLAN  
1/4" = 1'-0"

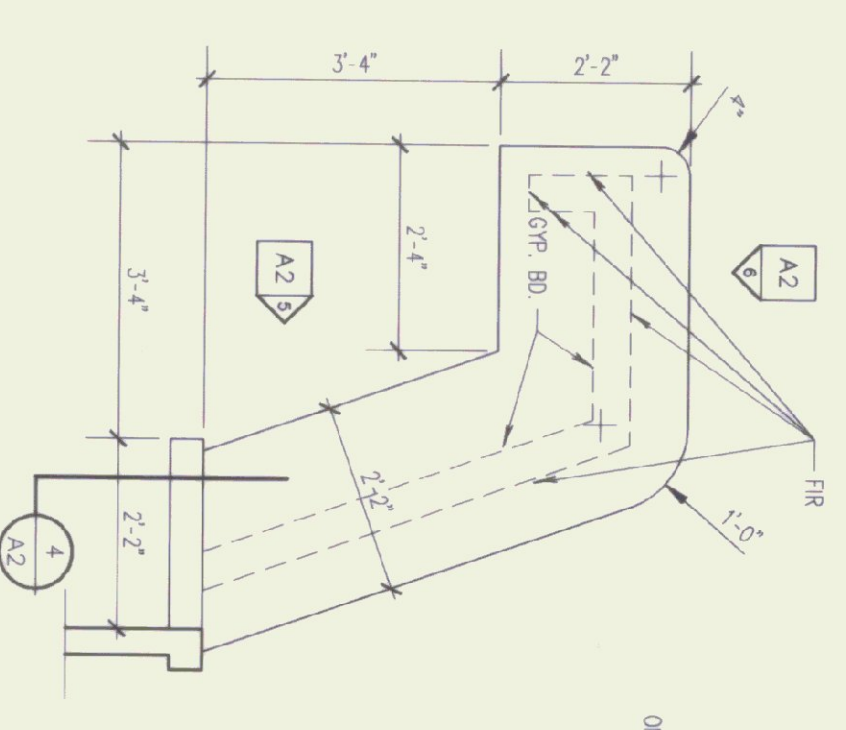
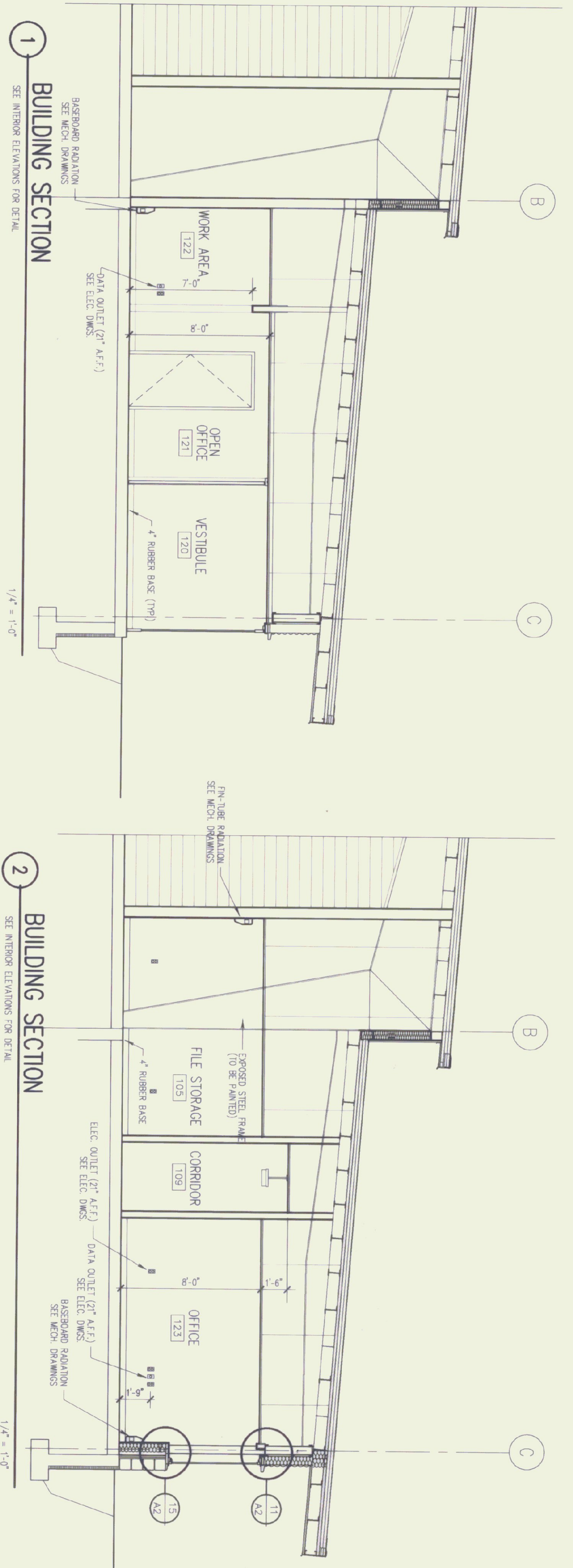
Project Title:  
**Agency of Transportation HUNTINGTON HANGAR OFFICES**  
Berlin, Vermont

Job Number: 9605  
File Name: 9505fp  
Drawn By: TMB  
Checked By: GS  
Scale: As Shown  
Date: November, 1996

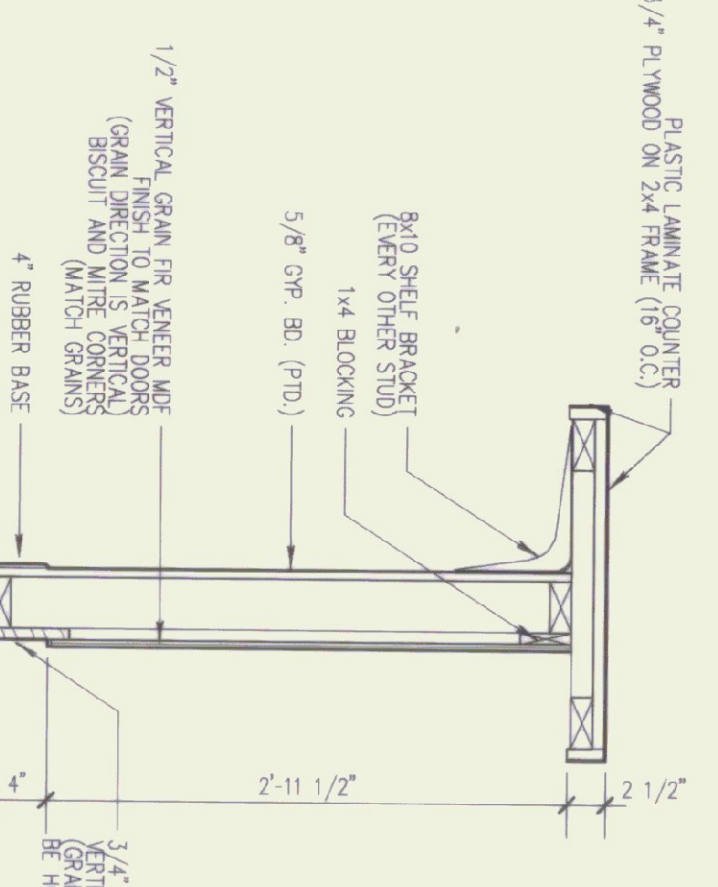
Revisions:

Sheet Number: **A1**  
Gossens Bachman, Inc.

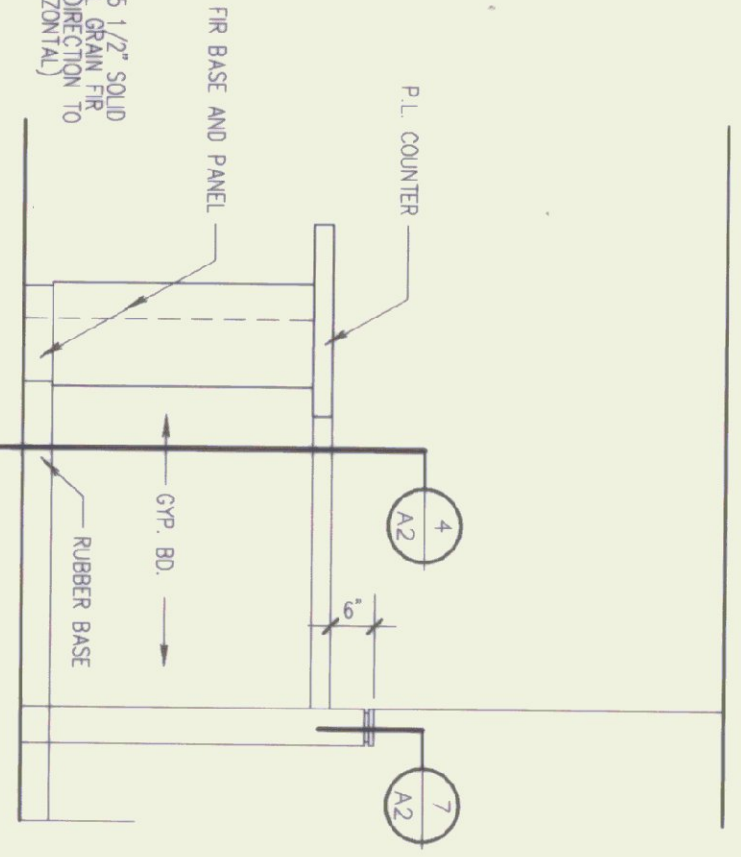
**Gossens Bachman**  
Architecture and Interior Design  
Gossens Bachman, Inc.  
Langdon Street  
Montpelier, Vermont 05602  
(802) 229-1664



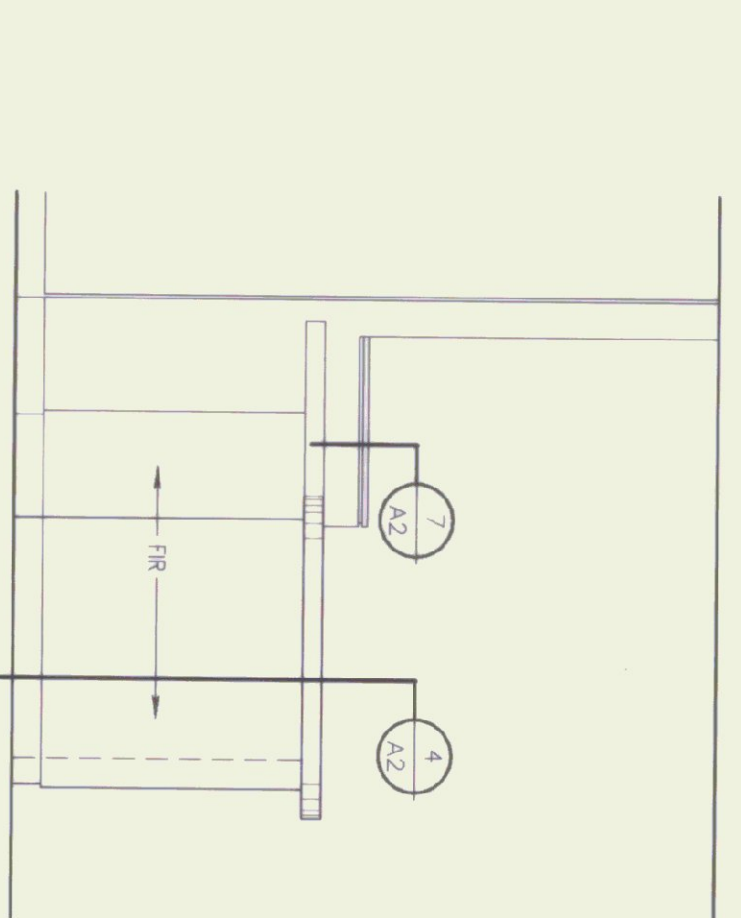
3 RECEPTION DESK LAYOUT  
1/2"=1'-0"



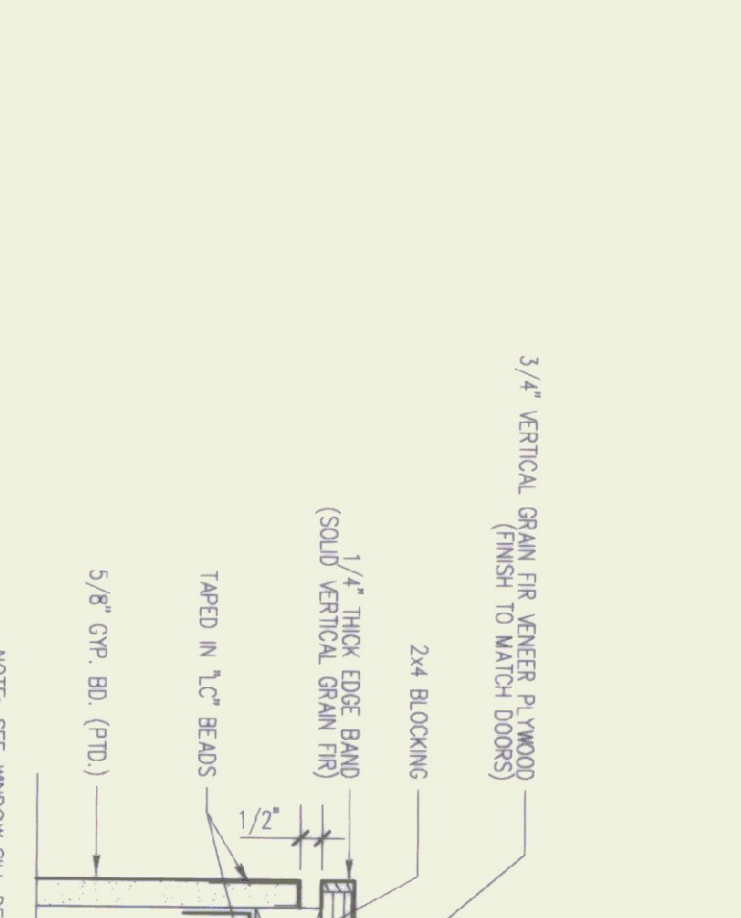
4 RECEPTION DESK DETAIL  
1/2"=1'-0"



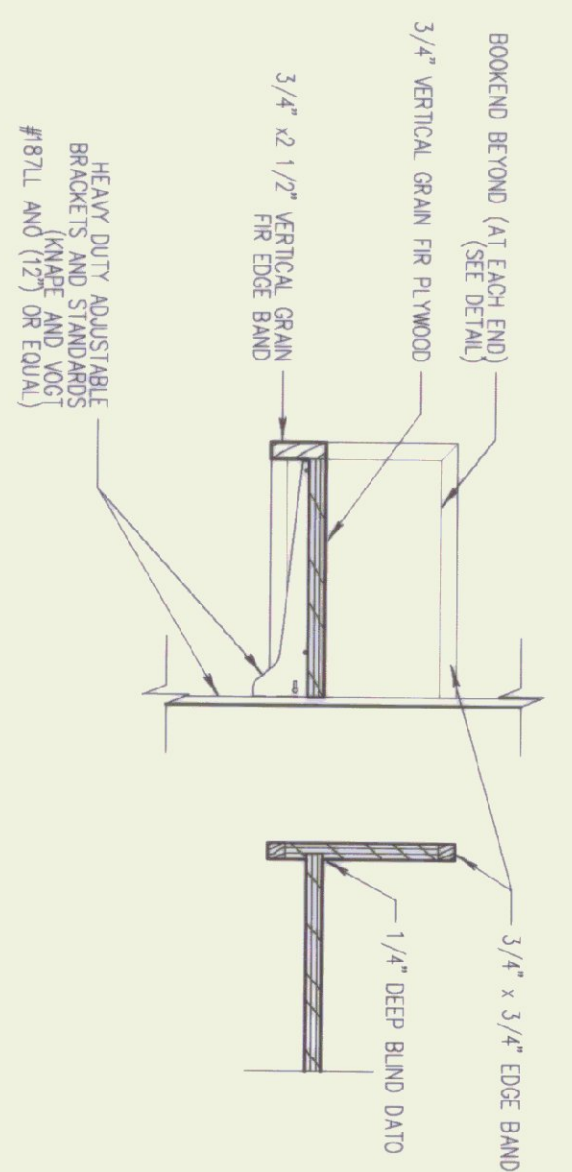
5 RECEPTION DESK ELEVATION  
1/2"=1'-0"



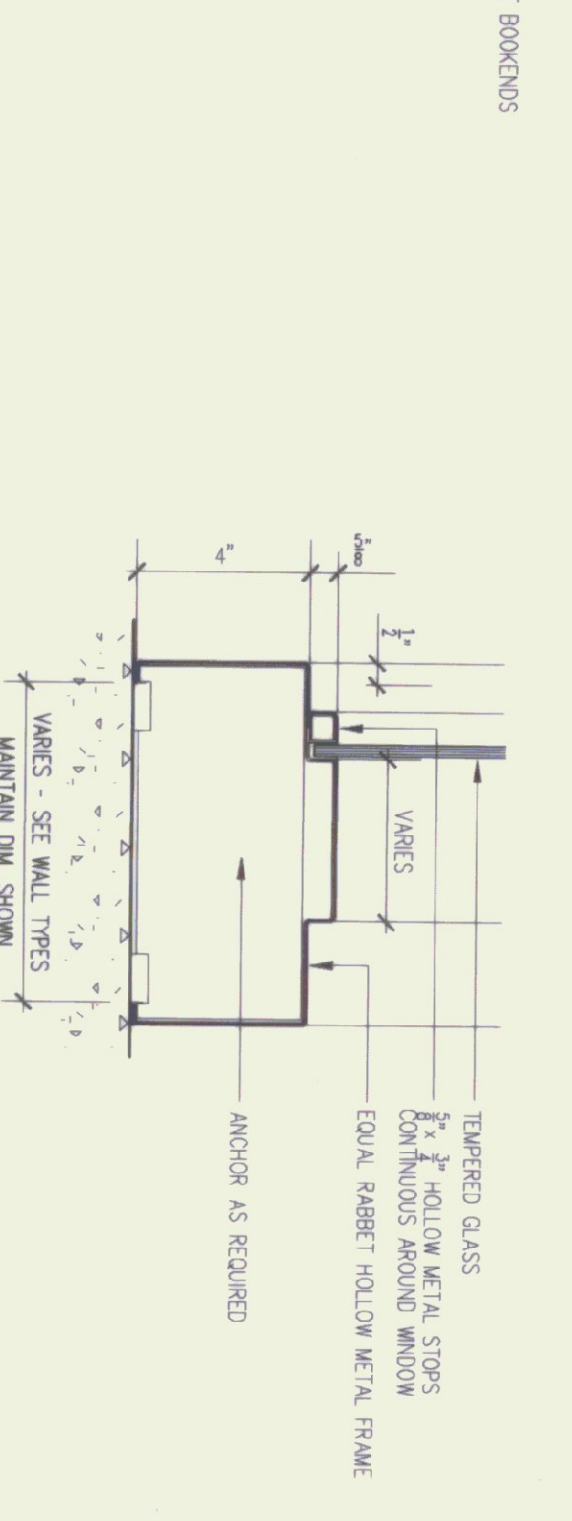
6 RECEPTION DESK ELEVATION  
1/2"=1'-0"



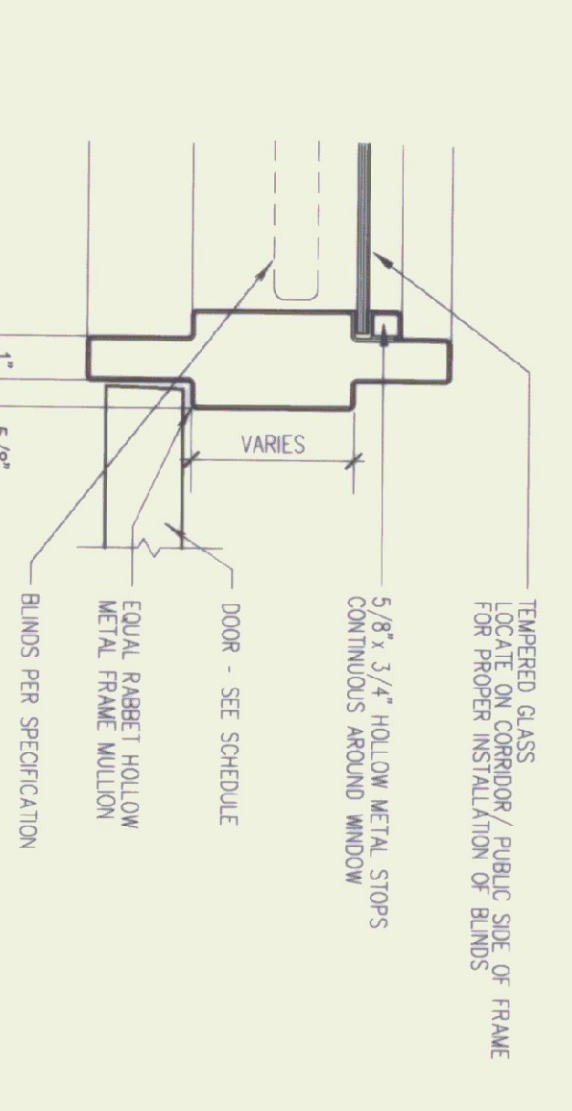
7 LOW WALL DETAIL  
3/8"=1'-0"



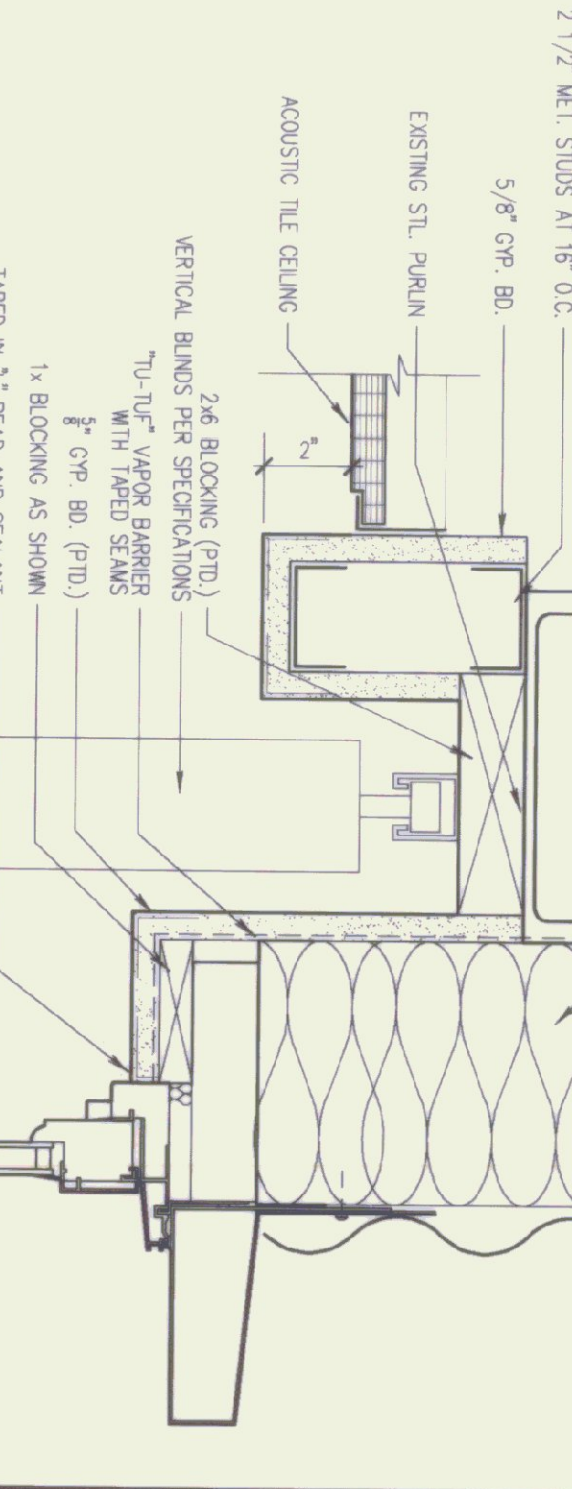
8 DETAIL OF OFFICE SHELVES  
1 1/2"=1'-0"



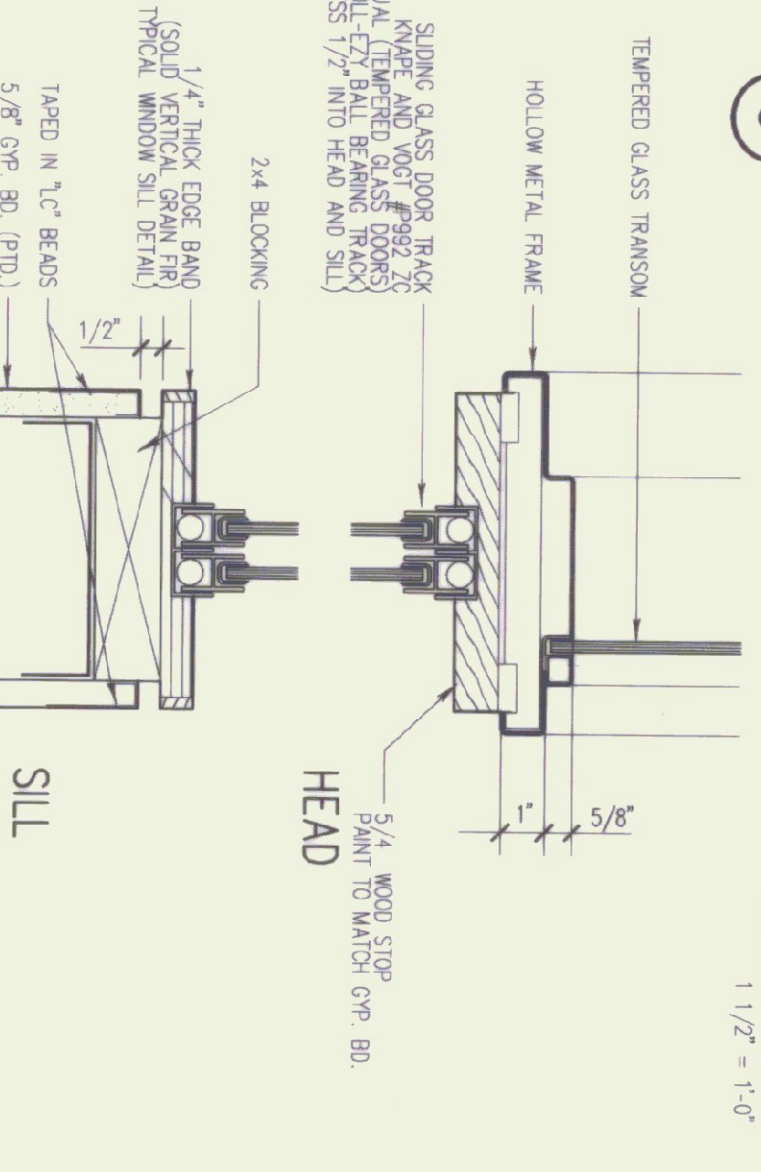
9 TYPICAL SIDELIGHT SILL  
3/8"=1'-0"



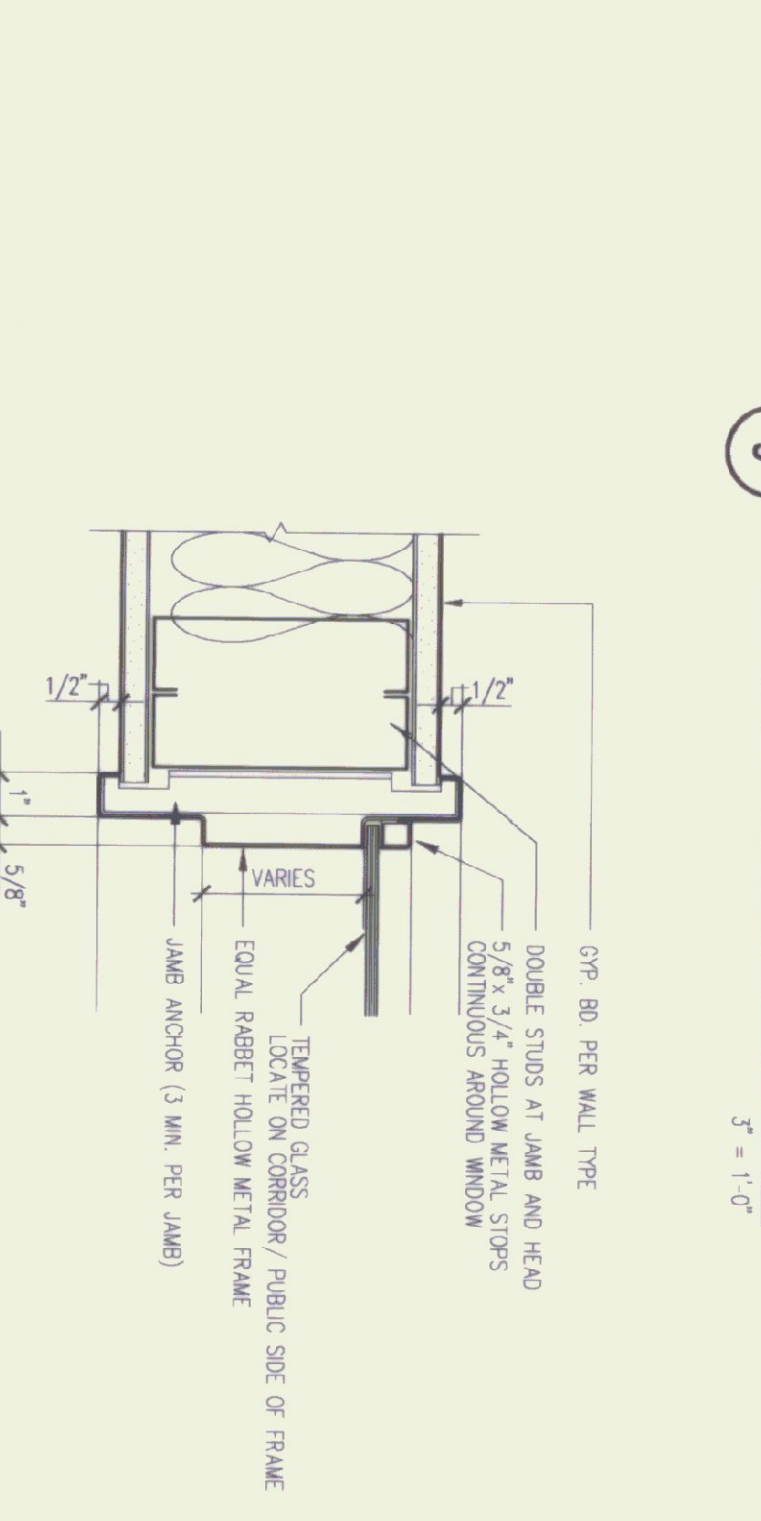
10 TYPICAL SIDELIGHT AT JAMB  
3/8"=1'-0"



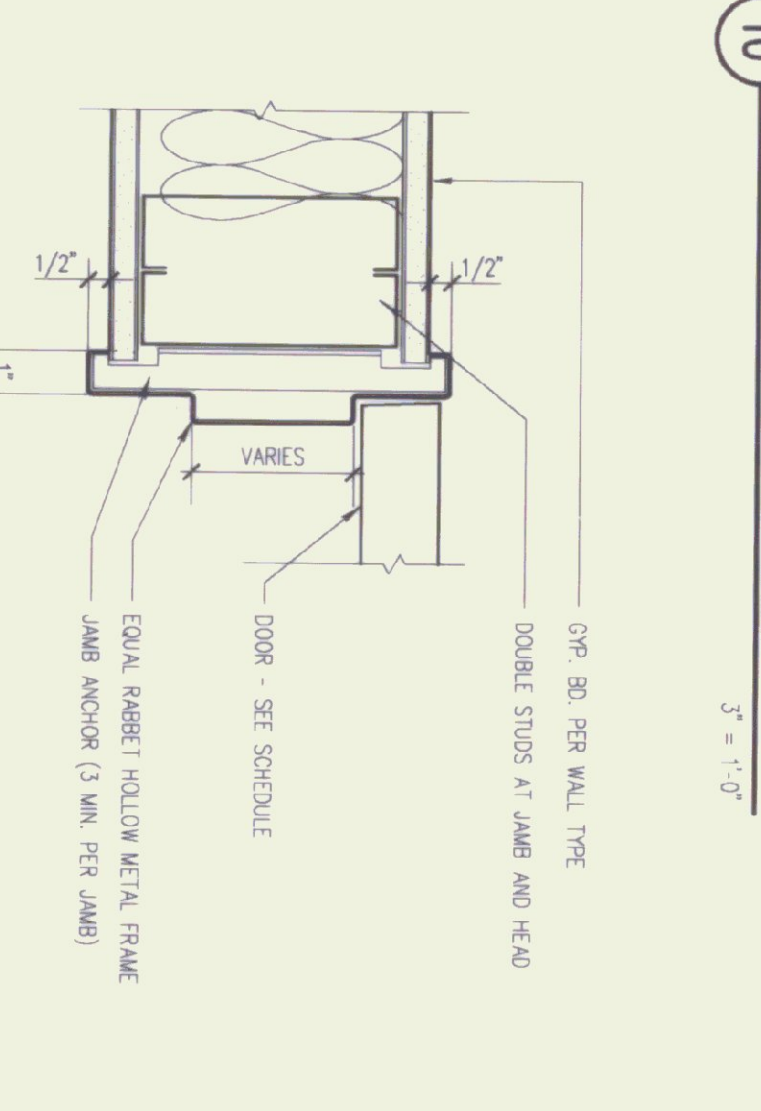
11 TYP. SECTION AT WINDOW HEAD  
3/8"=1'-0"



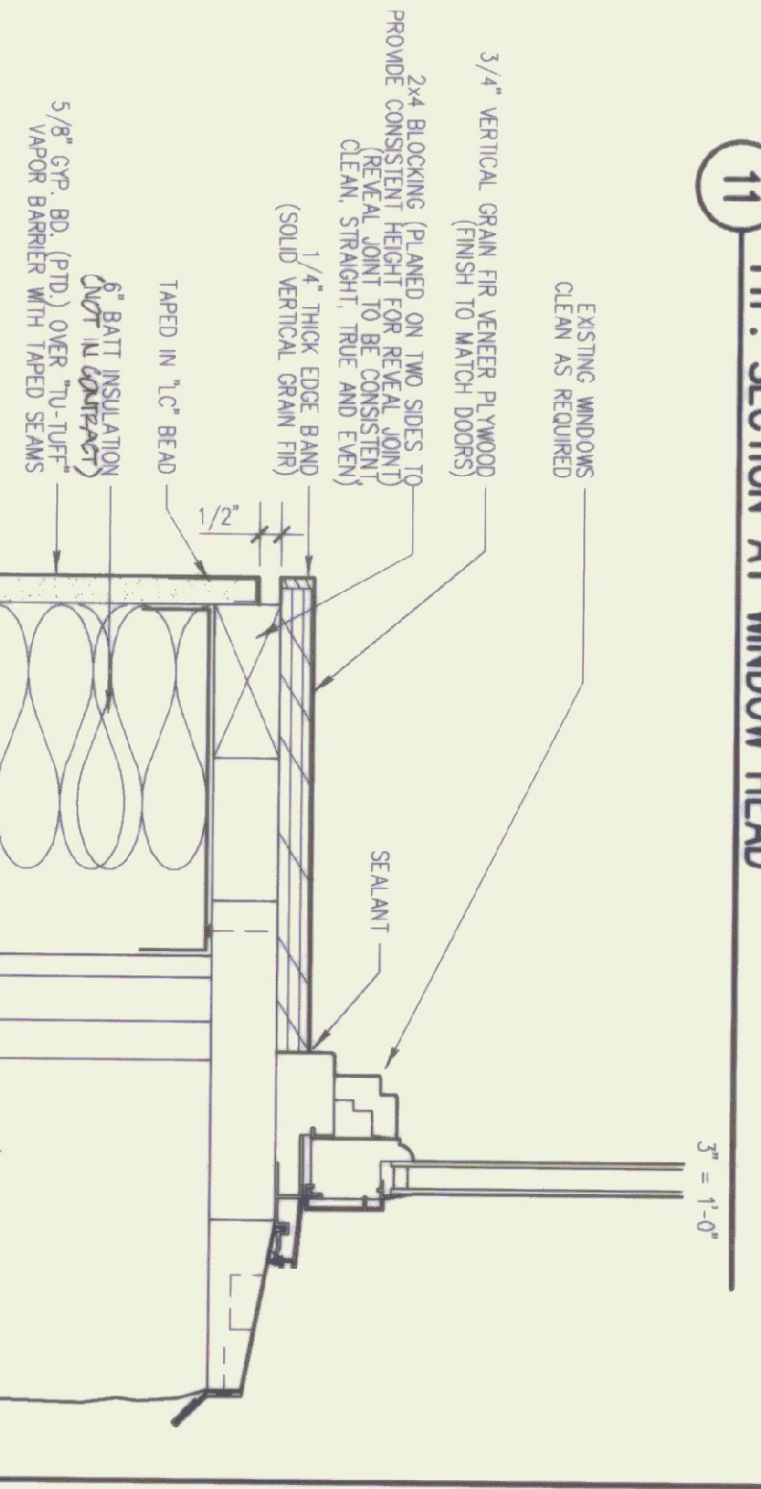
12 SLIDING WINDOW DETAIL  
3/8"=1'-0"



13 TYPICAL SIDELIGHT JAMB/HEAD  
3/8"=1'-0"



14 TYPICAL INT. DOOR HEAD/JAMB  
3/8"=1'-0"



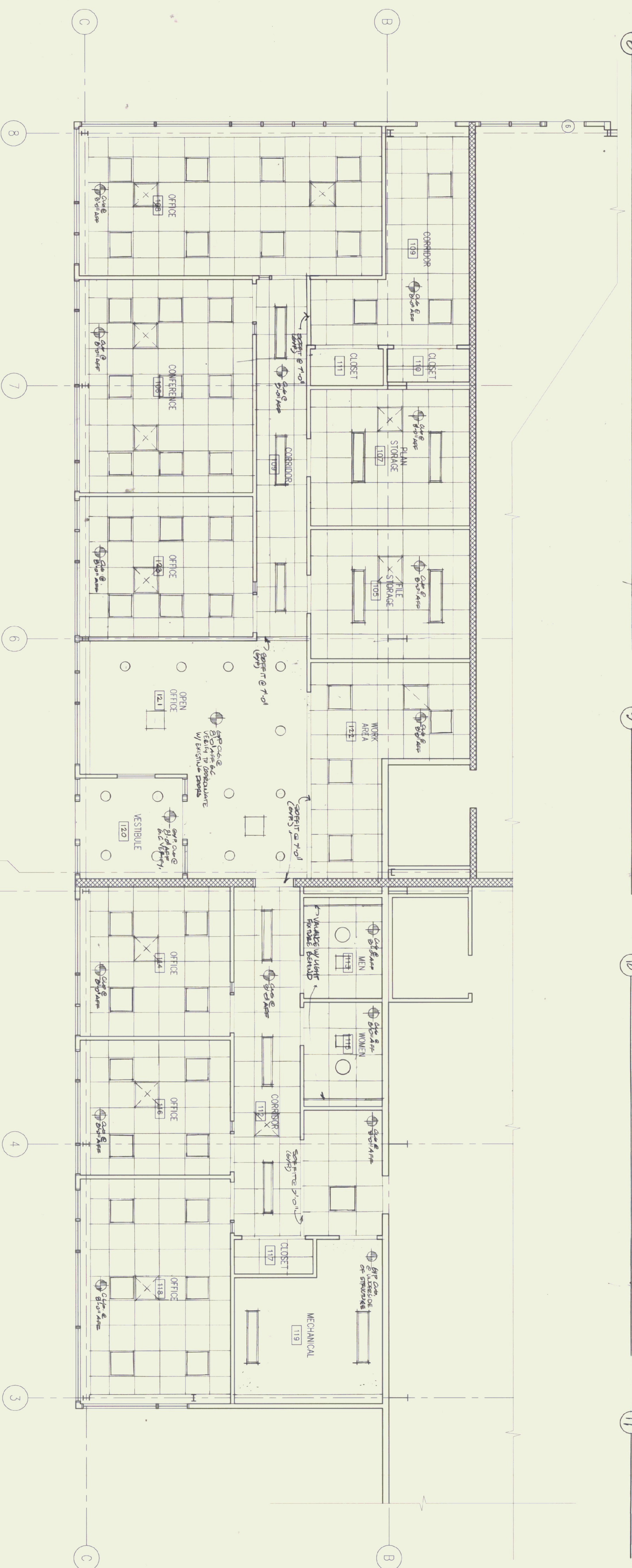
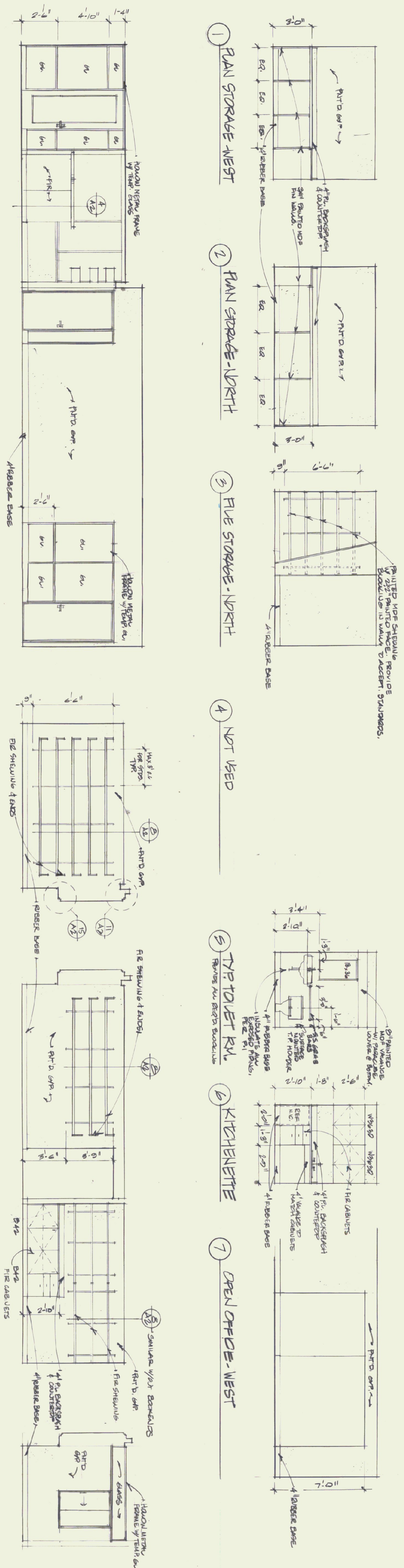
15 TYP. SECTION AT WINDOW SILL  
3/8"=1'-0"



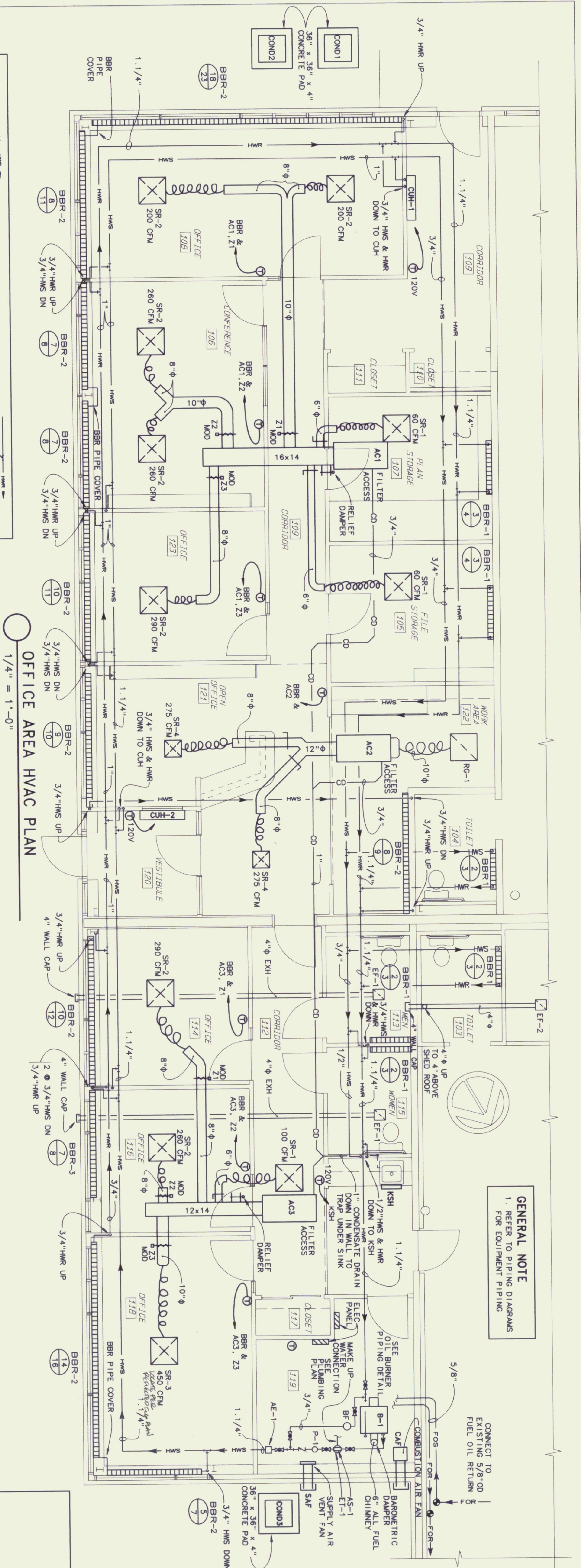
Gossens Bachman  
Architecture and Interior Design  
18 Langdon Street  
Montpelier, Vermont 05602  
(802) 259-1684

Project Title:  
Agency of  
Transportation  
HUNTINGTON  
HANGAR OFFICES  
Berlin, Vermont

Revisions:  
Job Number: 9605  
Drawn By: TWB  
Checked By: GC  
Scale: As Shown  
Date: November, 1986  
Sheet Title:  
Reflected  
Ceiling Plan  
and Details



1 REFLECTED CEILING PLAN  
1/4" = 1'-0"

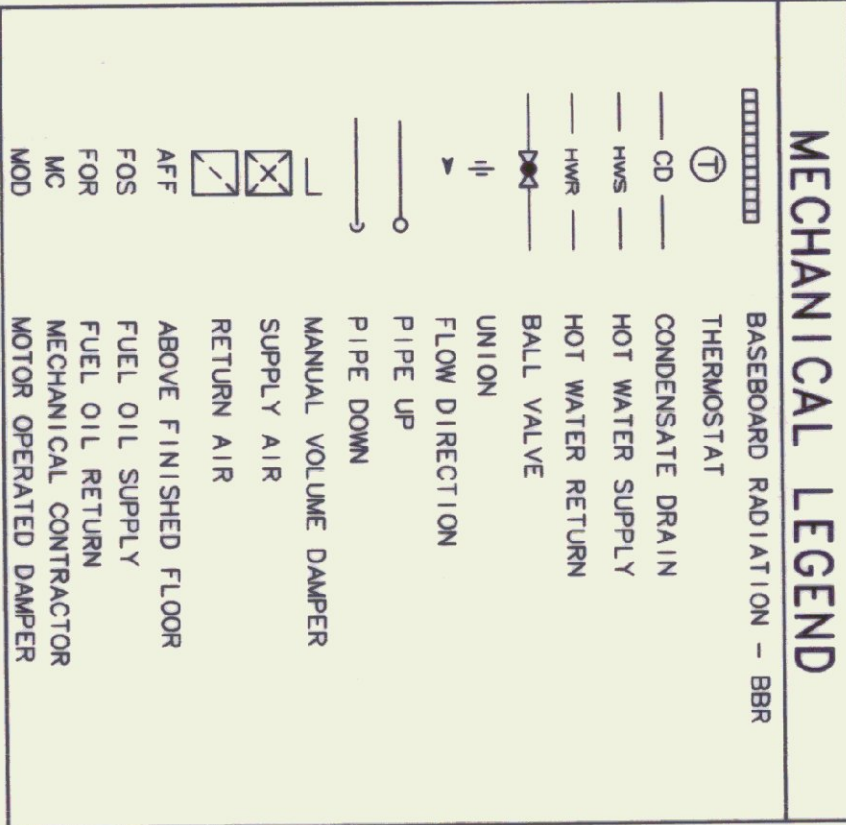
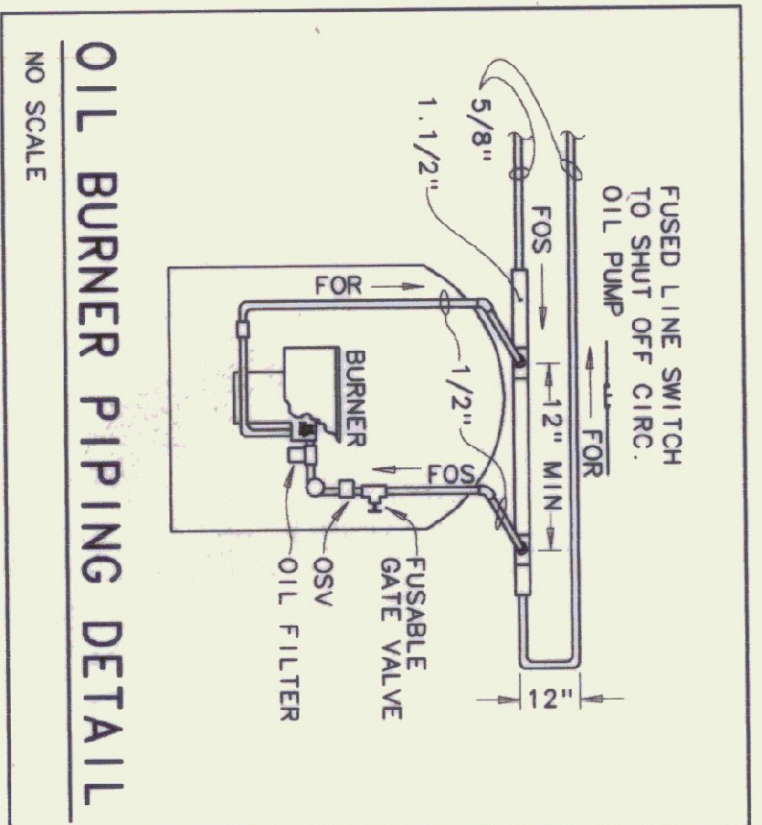
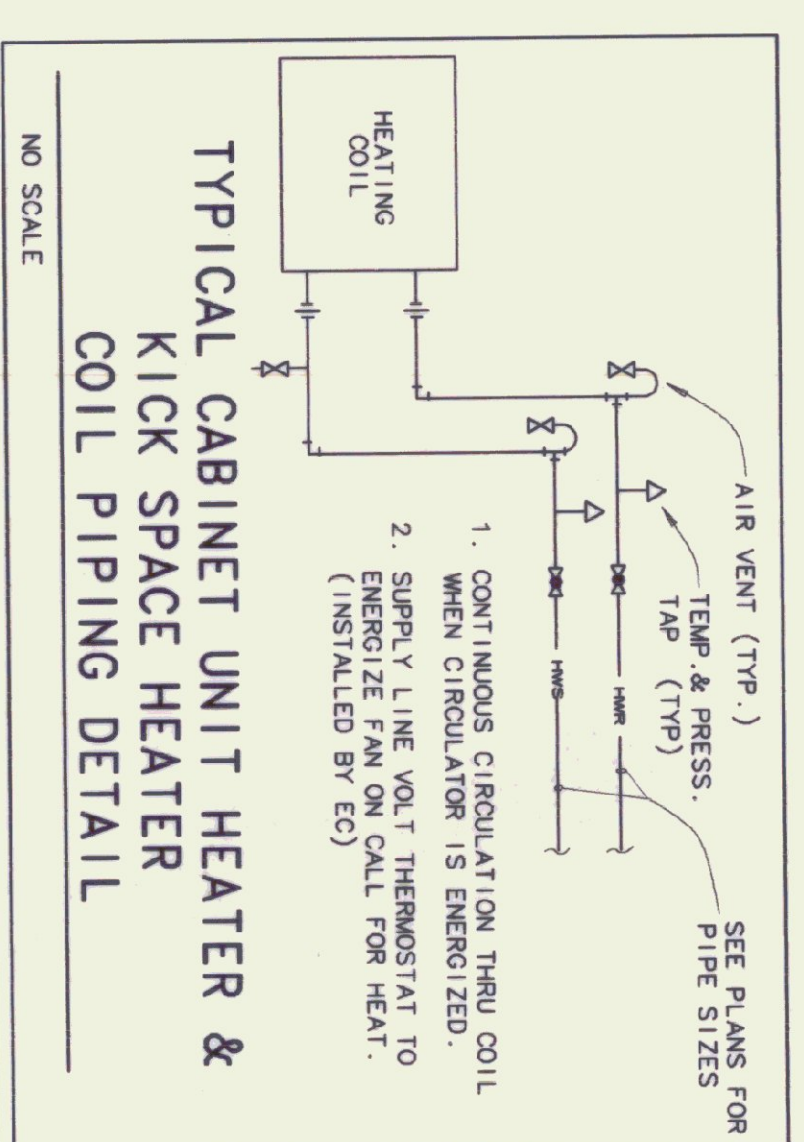


**MECHANICAL EQUIPMENT SCHEDULE**

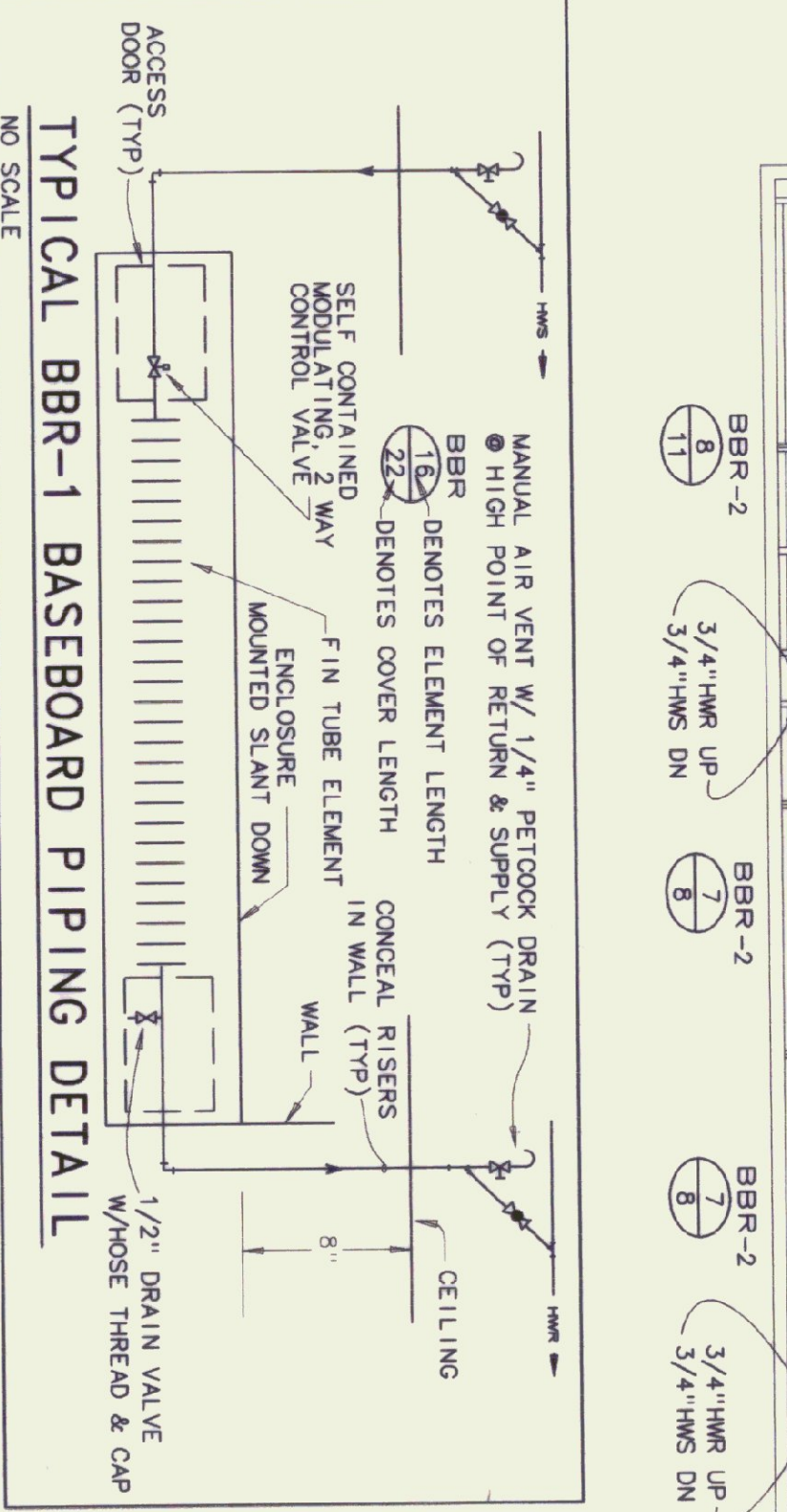
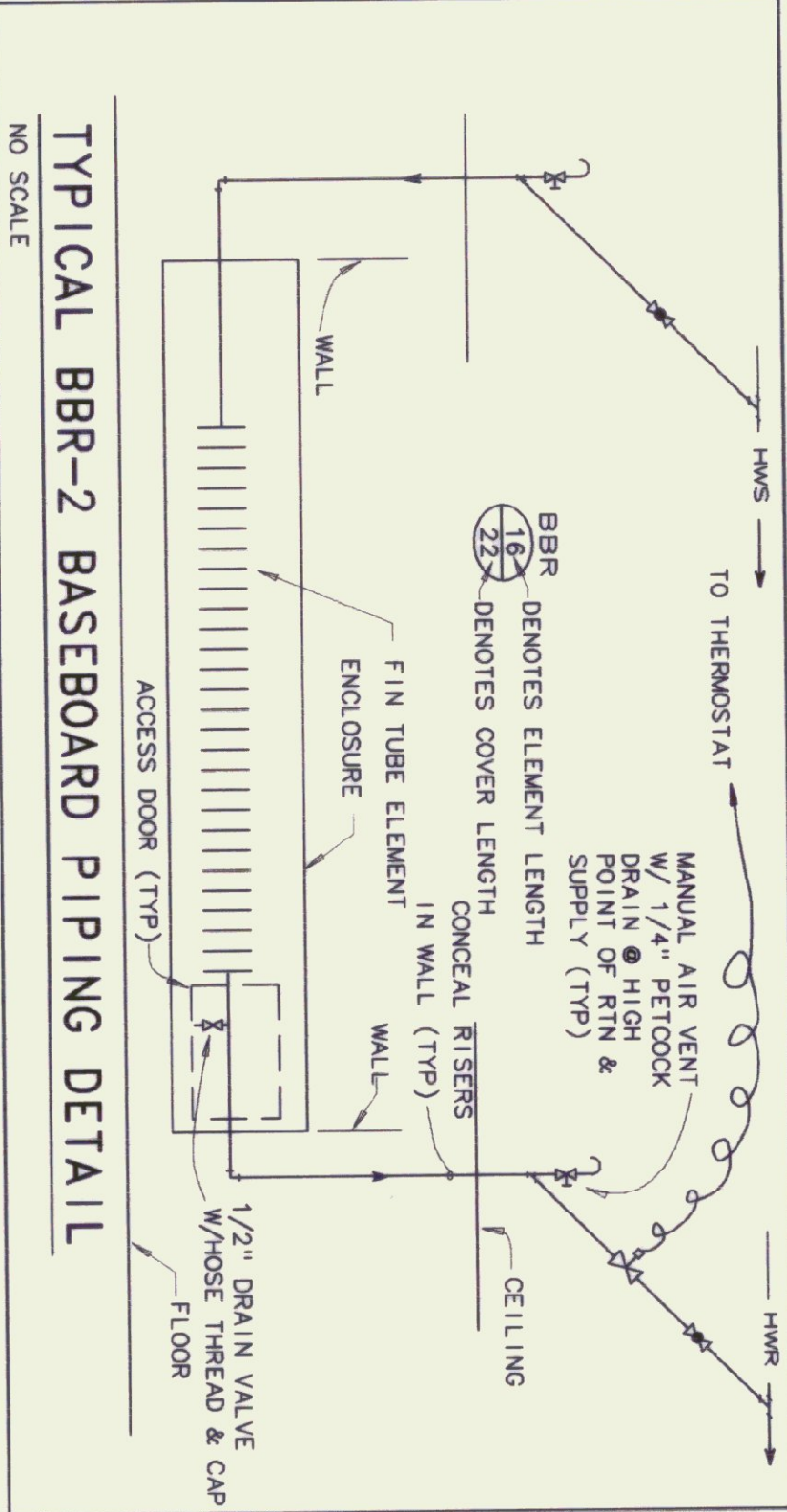
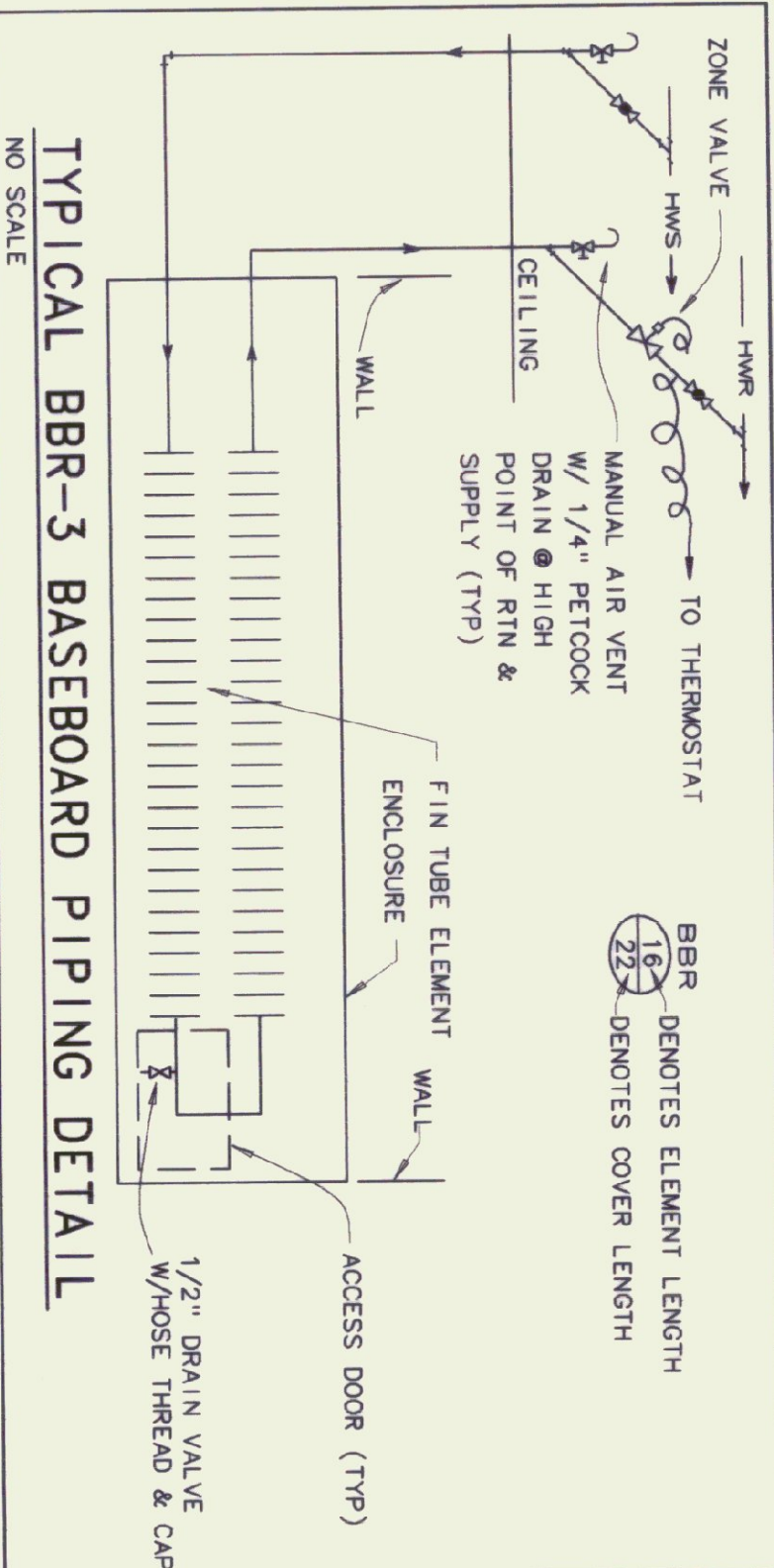
ITEM	DESCRIPTION	ITEM	DESCRIPTION
AC-1/1 COND1	AIR CONDITIONING HORIZONTAL BLOWER COIL, LENNOX CBH19-41, 1200 CFM @ 4" WG, 1/3 HP, 230 VOLT WITH PERFECT TEMP ZONE CONTROL SYSTEM MODEL 6203 WITH THREE ZONE DAMPERS AND RELIEF DAMPER.	BBR-2	BASEBOARD RADIATION, DUNHAM BUSH, TYPE S312, SLOPE ENCLOSURE, 3/4" C, 2 3/4" X 3 - 48 FINS PER FOOT, 12" INCH ENCLOSURE HEIGHT, TOP OF ENCLOSURE AT 16 1/2" INSTALLED HEIGHT, 770 BTU/FT. @ 170 DEGREES AMT., 65 EAT, 16 GAUGE. COLOR SELECTED BY ARCHITECT.
AC-2/2 COND2	AIR CONDITIONING HORIZONTAL BLOWER COIL, LENNOX CBH19-21, 600 CFM @ .3" WG, 1/10 HP, 230 VOLT STANDARD 210/240, 230 VOLT, 21.4 MIN CIRCUIT AMPLACITY, LINE SET, 5/8 LIQUID, 3/4 SUCTION.	BBR-3	BASEBOARD RADIATION, DUNHAM BUSH, TYPE S420, SLOPE ENCLOSURE, 3/4" C, 2 3/4" X 3 - 48 FINS PER FOOT, 2 ROW, 20" INCH ENCLOSURE HEIGHT, TOP OF ENCLOSURE AT 24" INSTALLED HEIGHT, 1110 BTU/FT. @ 170 DEGREES AMT., 65 EAT, 16 GAUGE. COLOR SELECTED BY ARCHITECT.
AC-3/3 COND3	AIR CONDITIONING HORIZONTAL BLOWER COIL, LENNOX CBH19-31, 1000 CFM @ .4" WG, 1/3 HP, 230 VOLT WITH PERFECT TEMP ZONE CONTROL SYSTEM MODEL 6203 WITH THREE ZONE DAMPERS AND RELIEF DAMPER.	BF-1	BYPASS FEEDER, 5 GALLON CAPACITY, 3 1/2" QUICK TOP OPENING, CAP WITH 'O' RING SEAL, 200 PSI, 212 DEGREES F, NEPTUNE # DBF-5 WITH FILTER BAG NEPTUNE #FRK-5 INLET, 115 VOLTS, 80 WATTS.
AE-1	AIR ELIMINATION VALVE, SPIROTHERM QUICK AIR RELEASE PROVIDE 36" X 36" X 1 1/2" CONCRETE PAD	CAF	COMBUSTION AIR FAN, THERNLUND PRODUCTS MODEL PA1-10, PROVIDE 3" PVC INLET WITH 90° ELBOW AT OUTDOOR AIR INLET, 115 VOLTS, 80 WATTS.
AS-1	AIR SEPARATOR, SPIROTHERM JUNIOR 1 1/4"	CAH-1	CABINET UNIT HEATER, NON RECESSED FLOOR MOUNTED, DUNHAM BUSH, STYLE F-14, MODEL CAH 100, 3 SPEED, 275/220/175 CFM, TYPE SC COIL, 11,700 BTUH @ 180F EMT, 60F EAT, 1.2 GPM, 20F TO WATER
B-1	BOILER, BUDERUS G208B-50, RIELOLO F5 OIL BURNER, FIRING RATE 1.4 GPH, 188,000 BTU/HR. INPUT, 146,000 BTU/HR OUTPUT, 86.8% EFFICIENCY. ACCESSORIES: BUDERUS ECOMATIC CONTROL SYSTEM HS210Z, TRIDICATOR, 30# RELIEF VALVE, LOW WATER CUTOFF, 3" TIGERHOLM FLEX OIL LINES, BURNER CONTROL.	CH-2	CABINET UNIT HEATER, NON RECESSED FLOOR MOUNTED, DUNHAM BUSH, STYLE F-14, MODEL CAH 100, 3 SPEED, 275/220/175 CFM, TYPE SC COIL, 11,700 BTUH @ 180F EMT, 60F EAT, 1.2 GPM, 20F TO WATER
BBR-1	BASEBOARD RADIATION, DUNHAM BUSH, TYPE S312, INVERTED, SLOPE ENCLOSURE, 3/4" C, 2 3/4" X 3 - 48 FINS PER FOOT, 1 ROW, 12" INCH ENCLOSURE HEIGHT, INSTALL 78" AF WITH SLOPE ON BOTTOM, 770 BTU/FT. @ 170 DEGREES AMT., 65 EAT, 16 GAUGE, SELF CONTAINED THERMOSTAT/CONTROL VALVE. COLOR SELECTED BY ARCHITECT.	ET-1	EXPANSION TANK, EXTRLO 60
		KSH	KICK SPACE HEATER, BEALON MORRIS MODEL K-84, 2 SPEED, 7900 BTUH @ 170° EMT, 65° EMT, FINISH LINE VOLTAGE THERMOSTAT TO CYCLE FAN.
		P-1	CIRCULATOR PUMP, GROUNDROSS UP26-96F, 13.5 GPM @ 16 FT. HEAD, 115 V, 1 1/2 HP, 1.6 AMPS
		SAF	SUPPLY FAN - DIRECT DRIVE SIDEWALL PROPPELLER, 256CFM @ 1" S.P., GREENHECK SSI-B-440G, 256 CFM @ 1" S.P., 1/40 HP, 115V WITH 115V MOTORIZED BACKDRIFT DAMPER, WEATHERHOOD, WALL COLLAR AND MOTOR SIDE GUARD

**EXHAUST FAN, GRILLES, REGISTERS, DIFFUSERS SCHEDULE**

ITEM	DESCRIPTION
EF-1	EXHAUST FAN, 80 CFM, 115 VOLT, BROWN 664 W/ HOODED WALL CAP.
EF-2	SAME AS EF-1 WITH LINE VOLTAGE T-STAT - CLOSE ON RISE.
RG-1	RETURN GRILLE, METAL-AIRE 7500-6, 24x24 T-BAR, 10" OD NECK, NO DAMPER.
SR-1	CEILING SUPPLY DIFFUSER, 6x6, 4 WAY, METAL-AIRE SERIES 5000-6-1V-SPFN-05 T-BAR MOUNT (24x24), ALUMINUM WHITE W/ OPPOSED BLADE DAMPER AND INDUCTION VANE CORE.
SR-2	CEILING SUPPLY DIFFUSER, 9x9, 4 WAY METAL-AIRE SERIES 5000-6-1V-SPFN-05 T-BAR MOUNT (24x24), ALUMINUM WHITE W/ OPPOSED BLADE DAMPER AND INDUCTION VANE CORE.
SR-3	CEILING SUPPLY DIFFUSER, 12x12, 4 WAY METAL-AIRE SERIES 5000-6-1V-SPFN-05 T-BAR MOUNT (24x24), ALUMINUM WHITE W/ OPPOSED BLADE DAMPER AND INDUCTION VANE CORE.
SR-4	CEILING SUPPLY DIFFUSER, 9x9, 4 WAY METAL-AIRE SERIES 5000-1-1V-SPFN-05 ALUMINUM WHITE W/ OPPOSED BLADE DAMPER AND INDUCTION VANE CORE.



**GENERAL NOTE**  
1. REFER TO PIPING DIAGRAMS FOR EQUIPMENT PIPING



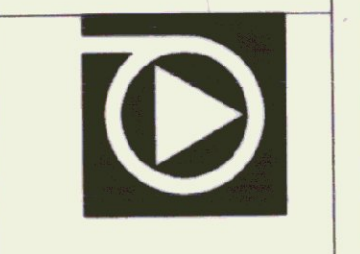
**Pearson & Associates**  
MECHANICAL & ELECTRICAL ENGINEERS  
P. O. BOX 610 STOWE, VERMONT 05672  
TEL. (802) 253-9607 FAX. (802) 253-9290

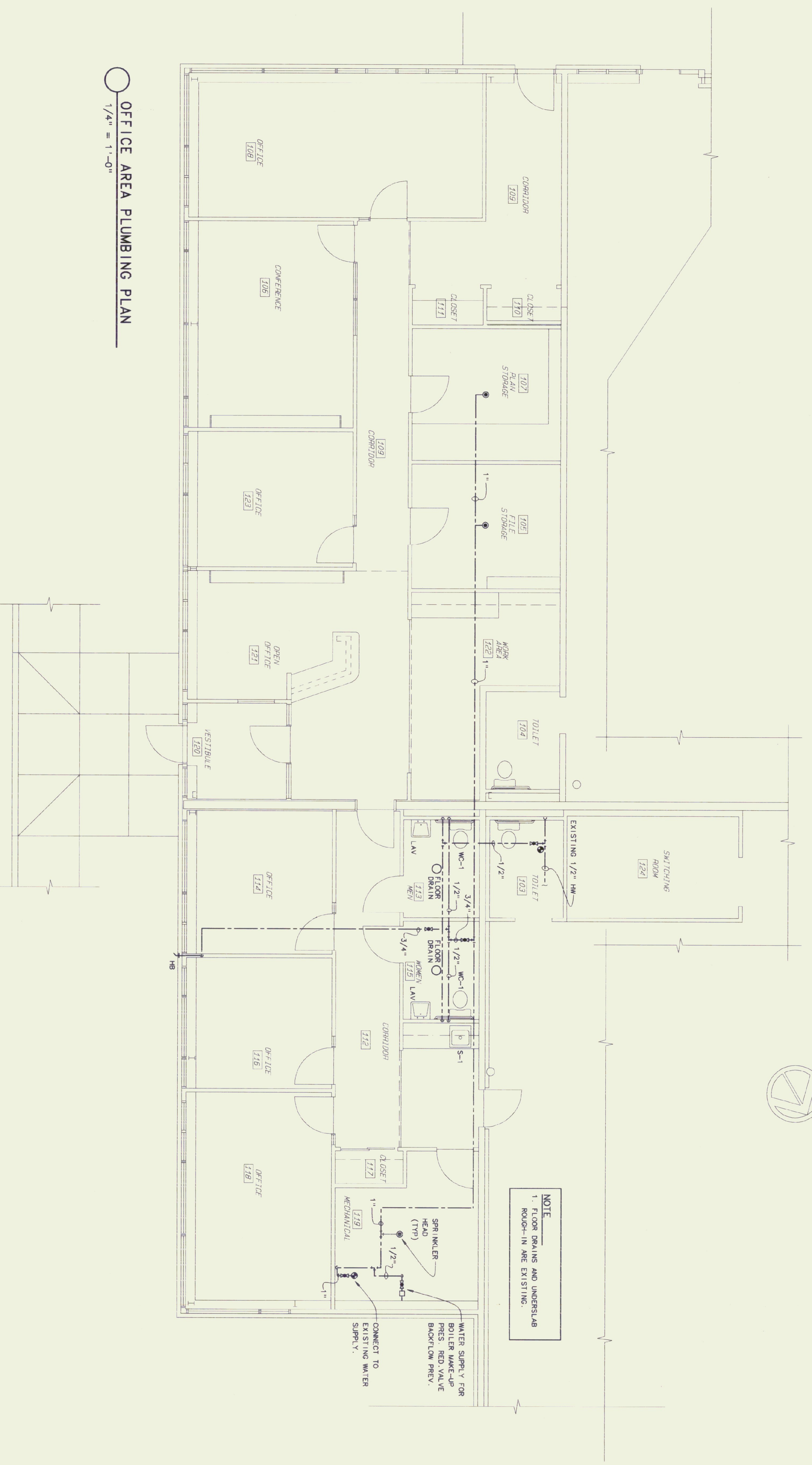
**Gossens Bachman**  
Architecture and Interior Design  
18 Langdon Street  
Montpelier, VT 05602  
(802) 228-1664

**STATE OF VERMONT**  
Department of Buildings & General Services  
AGENCY OF ADMINISTRATION  
Agency of Transportation  
HUNTINGTON HANGAR OFFICES  
Berlin, Vermont

**OFFICE AREA HVAC PLAN**

DATE: 11/06 SCALE: 1/4"=1'-0"  
DRAWN BY: B.W.M. APPROVED BY: E.E.P.  
SHEET: P-HH-M1 OF  
DWG NO. M-1



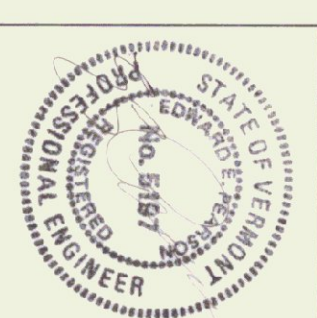


OFFICE AREA PLUMBING PLAN  
1/4" = 1'-0"

ITEM	MANUFACTURER & MODEL	TRIM & ACCESSORIES	CONNECTION			REMARKS
			WASTE/VENT	CW	HW	
HB	WOODRHO 250-12 FREEZELESS WALL FAUCET	VOLVM BREAKER, BACKFLOW PREVENTER	1/2"	1/2"	1/2"	
LAV	AMERICAN STANDARD COMBINE LAVATORY CAT# 124,024, 4" CENTERS	AM. STD. #2365,002 W/ GRID DRAIN SUPPLIES W/ STOP, 1 1/4" OFFSET TRAP	1 1/4"	1 1/2"	1/2"	WHITE TRUBRID LAV-GUARD INSULATION KIT #102M/105M
SA	SHOCK ABSORBER	WIDE W-5		3/4"		
S-1	SINK, ELKAY # DL-R-2222-10	LDS STRAINER, AM STD. 4206, 453 FAUCET, HEAVY DRAIN, TRAP W/ DRAIN ACCESSORY FOR NO CONDENSATE SEAT - OLSSENITE #95 OPEN FRONT, LESS COVER	1 1/2"	1 1/2"	1/2"	
WC-1	AMERICAN STANDARD 17", NEW CADET RIM ELONGATED, 1.6 GPM/FLUSH PRESSURE ASSISTED CAT # 2168,100		4"	2"	3/8"	

NOTE  
1. FLOOR DRAINS AND UNDERSLAB ROUGH-IN ARE EXISTING.

WATER SUPPLY FOR BOILER MAKE-UP PRES. RED VALVE BACKFLOW PREV.  
CONNECT TO EXISTING WATER SUPPLY.  
SPRINKLER HEAD (TYP)  
MECHANICAL



**Pearson & Associates**  
MECHANICAL & ELECTRICAL ENGINEERS  
P. O. BOX 610 STOWE, VERMONT 05672  
TEL. (802) 253-9607 FAX. (802) 253-9290

**Gossens Bachman**  
Architecture and Interior Design  
Gossens Bachman, Inc.  
18 Langdon Street  
Montpelier, VT 05602  
(802) 228-1644

STATE OF VERMONT  
Department of Buildings & General Services  
AGENCY OF ADMINISTRATION  
MONTPELIER VERMONT

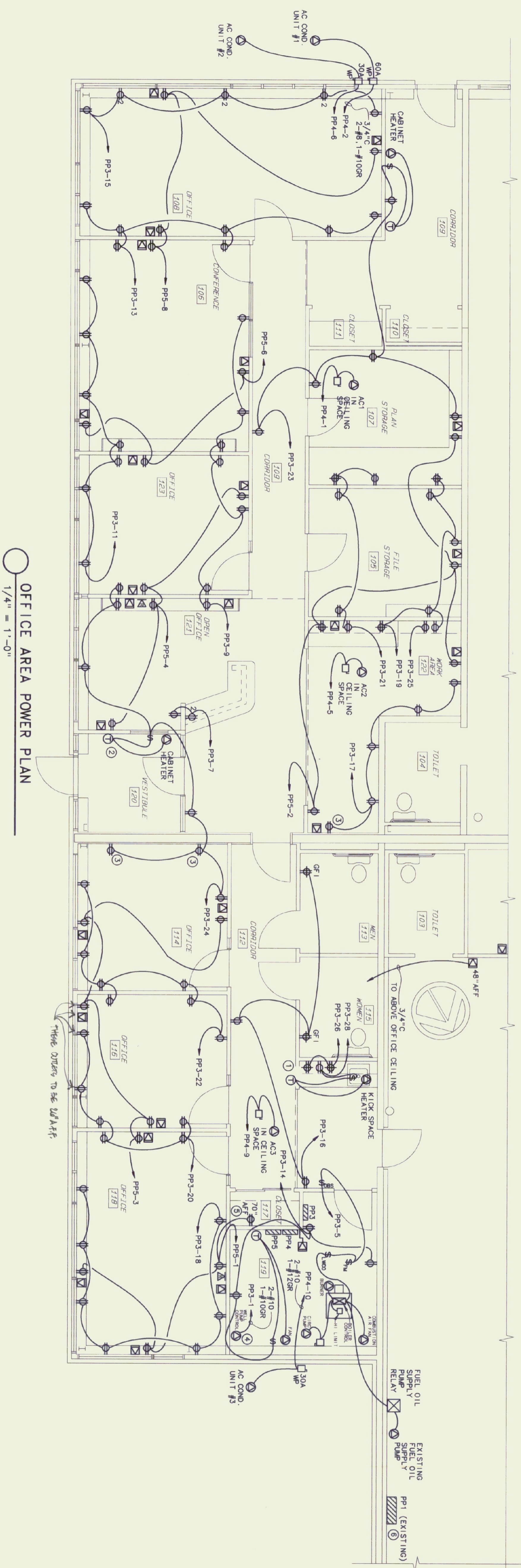
Agency of Transportation  
HUNTINGTON HANGAR OFFICES  
Berlin, Vermont

OFFICE AREA PLUMBING PLAN

DATE: 11/16 SCALE: 1/4"=1'-0"  
DRAWN BY: APPROVED BY: E.E.P.  
B.W.M.

REVISIONS:  
CAD FILE: P-HHO-P1  
SHEET: OF  
DWG NO. P-1





**PANEL DESIGNATOR**

PANEL: PP3  
 LOCATION: MECHANICAL ROOM - 119  
 FED FROM: PP1  
 MOUNTING: SURFACE  
 MAINS: 125 AMP 120 / 240 VOLT, 1 PHASE, MAIN LUG ONLY W/ GROUNDING LUG  
 CONNECTED LOAD: 20 KW

CKT NO.	KW LOAD	DESCRIPTION	BREAKER BREAKER		DESCRIPTION	KW LOAD	CKT NO.
			P AMP	P AMP			
1	.75	WELL PUMP	2	30	20	1	2
3	-	-	-	-	20	1	LIGHTING
5	.5	BOILER	-	-	20	1	LIGHTING
7	.5	OUTLETS	1	20	20	1	LIGHTING
9	1.0	OUTLETS	1	20	20	1	LIGHTING
11	1.0	OUTLETS	1	20	20	1	LIGHTING
13	1.0	OUTLETS	1	20	20	1	OUTLETS/FAN
15	1.0	OUTLETS	1	20	20	1	OUTLETS
17	.7	OUTLETS	1	20	20	1	OUTLETS
19	-	OUTLETS	1	20	20	1	OUTLETS
21	-	OUTLETS	1	20	20	1	OUTLETS
23	-	OUTLETS/CAB. HTR.	1	20	20	1	OUTLETS/CAB. HTR.
25	-	OUTLET - COPPER	1	20	20	1	OUTLETS-SMALL APPL.
27	-	SPARE	1	20	20	1	OUTLETS/KSH
29	-	SPARE	1	20	20	1	SPARE
31	-	SPARE	1	20	20	1	SPARE
33	-	SPARE	1	20	20	1	SPARE
35	-	SPARE	1	20	20	1	SPARE
37	-	SPARE	1	20	20	1	SPARE
39	-	SPARE	1	20	20	1	SPARE
41	-	SPARE	1	20	20	1	SPARE
42	-	SPARE	1	20	20	1	SPARE

\* EC TO PROVIDE NEW CIRCUIT BREAKER

**PANEL DESIGNATOR**

PANEL: PP4  
 LOCATION: MECHANICAL ROOM - 119  
 FED FROM: PP1  
 MOUNTING: SURFACE  
 MAINS: 125 AMP 120 / 240 VOLT, 1 PHASE, MAIN LUG ONLY W/ GROUNDING LUG  
 CONNECTED LOAD: 11.2 KW

CKT NO.	KW LOAD	DESCRIPTION	BREAKER BREAKER		DESCRIPTION	KW LOAD	CKT NO.
			P AMP	P AMP			
1	.5	AC1	2	15	35	2	AC COND. #1
3	-	-	-	-	-	-	-
5	.2	AC2	2	15	15	2	AC COND. #2
7	-	-	-	-	-	-	-
9	.5	AC3	2	15	30	2	AC COND. #3
11	-	-	-	-	-	-	-
13	-	SPACE	-	-	-	-	-
15	-	SPACE	-	-	-	-	-
17	-	SPACE	-	-	-	-	-

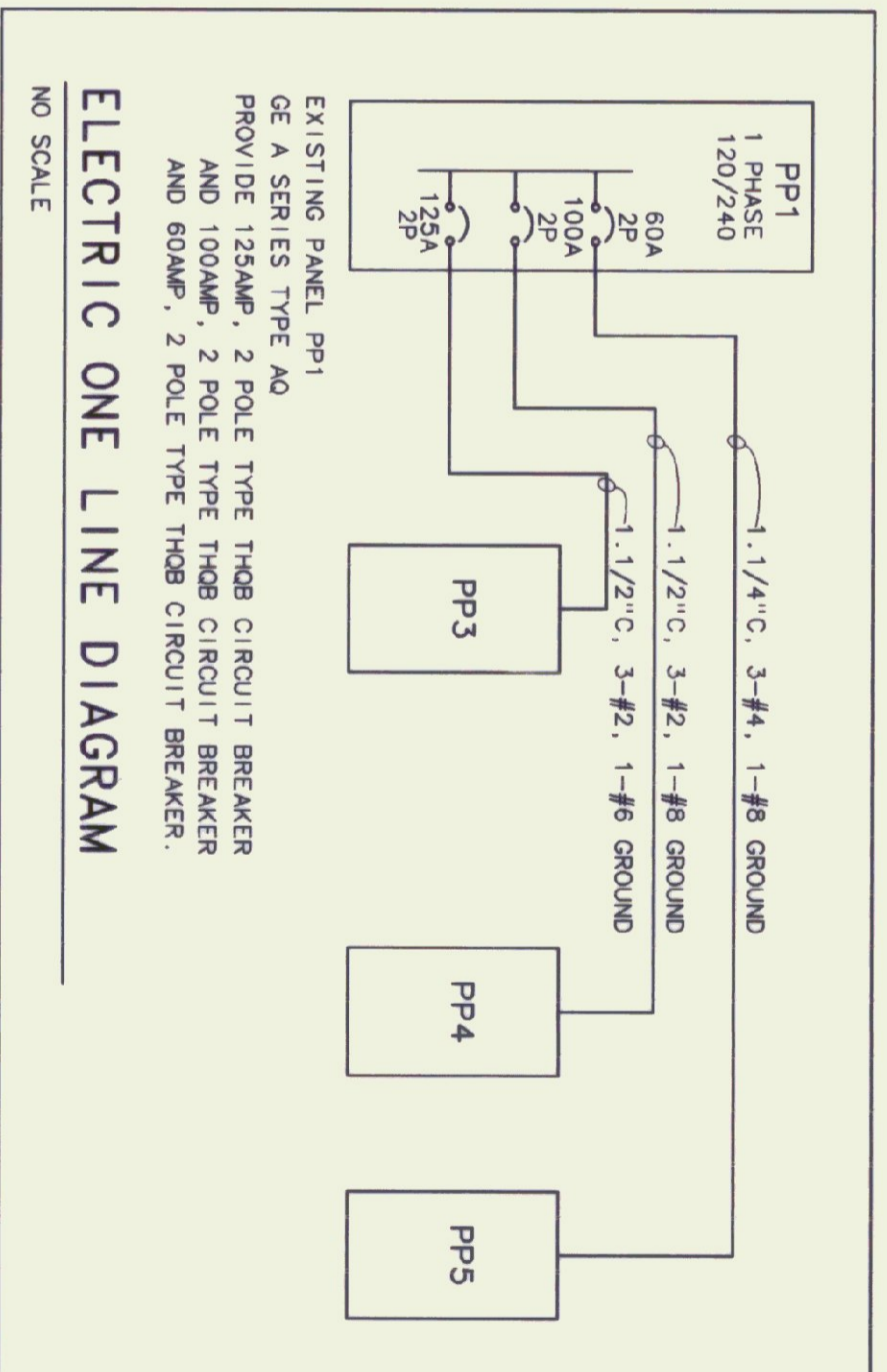
NOTE: ALL CIRCUIT BREAKERS TO BE UL LISTED FOR HACR

**LOADCENTER DESIGNATOR**

LOADCENTER: PP5  
 LOCATION: MECHANICAL ROOM - 119  
 FED FROM: PP1  
 MOUNTING: SURFACE  
 MAINS: 125 AMP, M.L.O., 120/240VAC, COPPER BUS, ISOLATED GROUND  
 CONNECTED LOAD: 2.5 KW

CKT NO.	KW LOAD	DESCRIPTION	BREAKER BREAKER		DESCRIPTION	KW LOAD	CKT NO.
			P AMP	P AMP			
1	.5	ISOLATED GROUND OUTLETS	1	20	20	1	ISOLATED GROUND OUTLETS
3	.5	ISOLATED GROUND OUTLETS	1	20	20	1	ISOLATED GROUND OUTLETS
5	-	SPACE	-	-	-	-	-
7	-	SPACE	-	-	-	-	-

\* PROVIDE 3 SIEMENS ITE TYPE CP (2) 20AMP CAT #05A2020 CIRCUIT BREAKER/SURGE ARRESTER



ELECTRIC ONE LINE DIAGRAM  
 NO SCALE

- GENERAL NOTE**
1. PROVIDE 4x4x1 1/2" OUTLET BOX WITH 1 GANG PLASTER RING WITH BLANK COVER AND 3/4" NON-METALLIC RACEWAY TO CEILING SPACE FOR VOICE / DATA AND RADIO ANTENNA. PROVIDE PLASTIC BUSHINGS ON ENT ENDS.
  2. ALL PP5 BRANCH CIRCUITS AND RECEPTACLES TO BE ISOLATED GROUND.

**KEYED NOTES**

1. LINE VOLT THERMOSTAT SUPPLIED BY MC, INSTALLED BY EC. PROVIDE SWITCH / HANDY BOX UNDER SINK.
2. LINE VOLT THERMOSTAT SUPPLIED BY MC, INSTALLED BY EC. PROVIDE SWITCH / HANDY BOX INSIDE CABINET HEATER.
3. SURFACE RACEWAY W/ SURFACE MOUNTED DEVICE.
4. PUMP CONTROLLER & WIRING FROM CONTROLLER TO WELL PUMP SUPPLIED BY OTHERS, EC TO PROVIDE BRANCH CIRCUIT TO PUMP CONTROLLER AND TERMINATE CONDUCTORS.
5. PROVIDE 4 ONE GANG SURFACE MOUNTED BOXES AT 70" AFF WITH 1" NON-METALLIC RACEWAY TO CEILING SPACE
6. PROVIDE 1.1/2" NON-METALLIC RACEWAY FROM EXISTING TEL. TERMINATION BOARD TO CEILING SPACE ABOVE CLOSET 117. PROVIDE PLASTIC BUSHINGS.

**Pearson & Associates**  
 MECHANICAL & ELECTRICAL ENGINEERS  
 P.O. BOX 610 STOWE, VERMONT 05672  
 TEL. (802) 253-9607 FAX. (802) 253-9290

**Gossens Bachman, Inc.**  
 Architecture and Interior Design  
 35 Montpelier Street  
 Montpelier VT 05602  
 (802) 229-1664



STATE OF VERMONT  
 Department of Buildings & General Services  
 AGENCY OF ADMINISTRATION  
 MONTPELIER VERMONT

Agency of Transportation  
 HUNTINGTON HANGAR OFFICES  
 Berlin, Vermont

OFFICE AREA POWER PLAN

DATE: 11/19/00 SCALE: 1/4" = 1'-0"  
 DRAWN BY: B.W.M. APPROVED BY: E.E.P.

CAD FILE: P-HHO-E2  
 SHEET: OF  
 DWG NO. E-2