

**PANEL DESIGNATOR**

PANEL: PP3  
 LOCATION: MECHANICAL ROOM - 119  
 FED FROM: PP1  
 MOUNTING: SURFACE  
 MAINS: 125 AMP 120 / 240 VOLT, 1 PHASE, MAIN LUG ONLY W/ GROUNDING LUG  
 CONNECTED LOAD: 20 KW

CKT NO.	KW LOAD	DESCRIPTION	BREAKER BREAKER		DESCRIPTION	KW LOAD	CKT NO.
			P	F			
1	.75	WELL PUMP	2	30	20	1	2
3	-	-	-	-	20	1	LIGHTING
5	.5	BOILER	-	-	20	1	LIGHTING
7	.5	OUTLETS	1	20	20	1	LIGHTING
9	1.0	OUTLETS	1	20	20	1	LIGHTING
11	1.0	OUTLETS	1	20	20	1	LIGHTING
13	1.0	OUTLETS	1	20	20	1	OUTLETS/FAN
15	1.0	OUTLETS	1	20	20	1	OUTLETS
17	.7	OUTLETS	1	20	20	1	OUTLETS
19	-	OUTLETS	1	20	20	1	OUTLETS
21	-	OUTLETS	1	20	20	1	OUTLETS
23	-	OUTLETS/CAB. HTR.	1	20	20	1	OUTLETS/CAB. HTR.
25	-	OUTLET - COPPER	1	20	20	1	OUTLETS-SMALL APPL.
27	-	SPARE	1	20	20	1	OUTLETS/KSH
29	-	SPARE	1	20	20	1	SPARE
31	-	SPARE	1	20	20	1	SPARE
33	-	SPARE	1	20	20	1	SPARE
35	-	SPARE	1	20	20	1	SPARE
37	-	SPARE	1	20	20	1	SPARE
39	-	SPARE	1	20	20	1	SPARE
41	-	SPARE	1	20	20	1	SPARE
42	-	SPARE	1	20	20	1	SPARE

\* EC TO PROVIDE NEW CIRCUIT BREAKER

**PANEL DESIGNATOR**

PANEL: PP4  
 LOCATION: MECHANICAL ROOM - 119  
 FED FROM: PP1  
 MOUNTING: SURFACE  
 MAINS: 125 AMP 120 / 240 VOLT, 1 PHASE, MAIN LUG ONLY W/ GROUNDING LUG  
 CONNECTED LOAD: 11.2 KW

CKT NO.	KW LOAD	DESCRIPTION	BREAKER BREAKER		DESCRIPTION	KW LOAD	CKT NO.
			P	F			
1	.5	AC1	2	15	35	2	AC COND. #1
3	-	-	-	-	-	-	-
5	.2	AC2	2	15	15	2	AC COND. #2
7	-	-	-	-	-	-	-
9	.5	AC3	2	15	30	2	AC COND. #3
11	-	-	-	-	-	-	-
13	-	SPACE	-	-	-	-	-
15	-	SPACE	-	-	-	-	-
17	-	SPACE	-	-	-	-	-

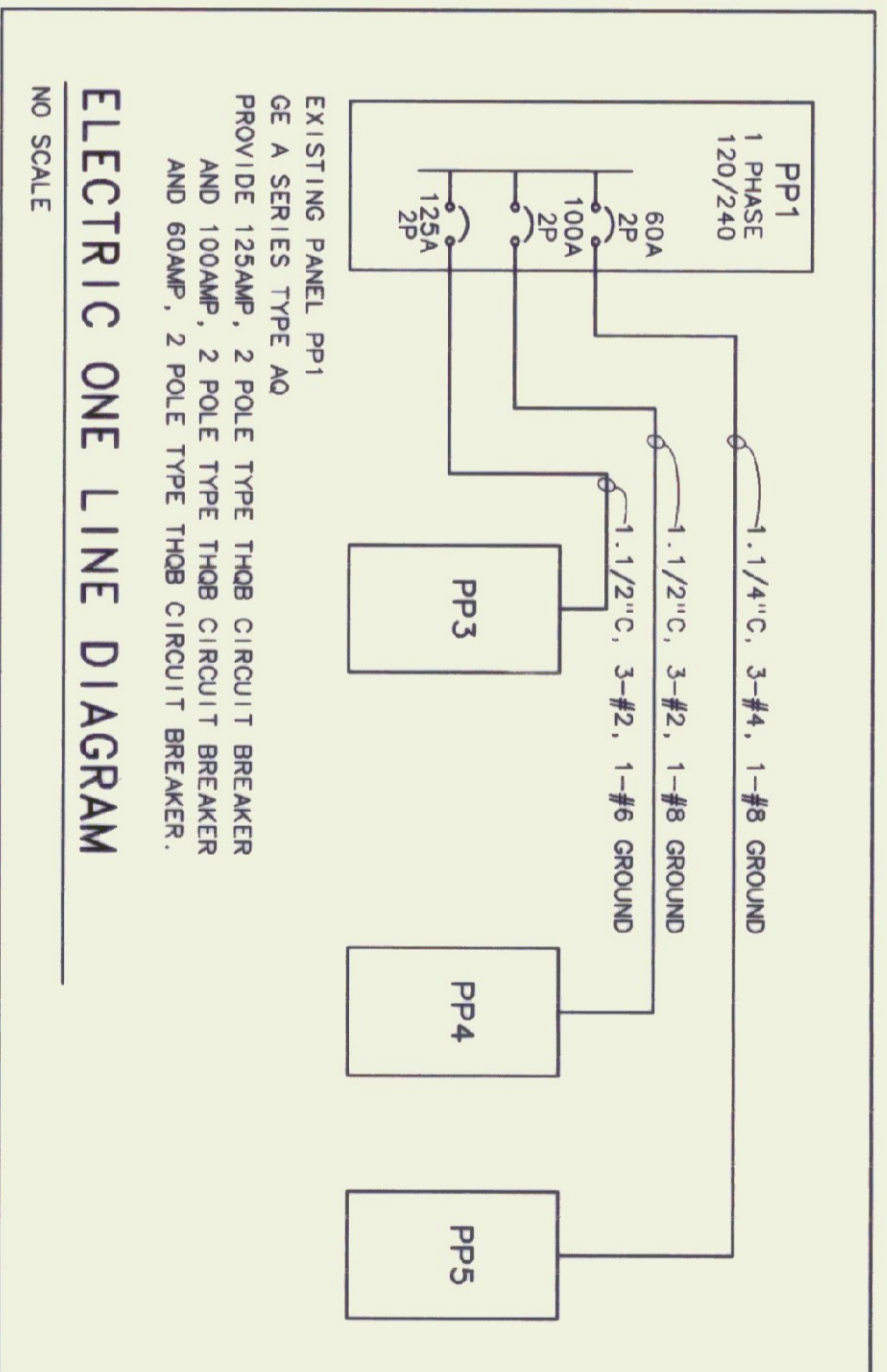
NOTE: ALL CIRCUIT BREAKERS TO BE UL LISTED FOR HACR

**LOADCENTER DESIGNATOR**

LOADCENTER: PP5  
 LOCATION: MECHANICAL ROOM - 119  
 FED FROM: PP1  
 MOUNTING: SURFACE  
 MAINS: 125 AMP, M.L.O., 120/240VAC, COPPER BUS, ISOLATED GROUND  
 CONNECTED LOAD: 2.5 KW

CKT NO.	KW LOAD	DESCRIPTION	BREAKER BREAKER		DESCRIPTION	KW LOAD	CKT NO.
			P	F			
1	.5	ISOLATED GROUND OUTLETS	1	20	20	1	ISOLATED GROUND OUTLETS
3	.5	ISOLATED GROUND OUTLETS	1	20	20	1	ISOLATED GROUND OUTLETS
5	-	SPACE	-	-	-	-	-
7	-	SPACE	-	-	-	-	-

\* PROVIDE 3 SIEMENS ITE TYPE CP (2) 20AMP CAT #05A2020 CIRCUIT BREAKER/SURGE ARRESTER



- GENERAL NOTE**
1. PROVIDE 4x4x1 1/2" OUTLET BOX WITH 1 GANG PLASTER RING WITH BLANK COVER AND 3/4" NON-METALLIC RACEWAY TO CEILING SPACE FOR VOICE / DATA AND RADIO ANTENNA. PROVIDE PLASTIC BUSHINGS ON ENT ENDS.
  2. ALL PP5 BRANCH CIRCUITS AND RECEPTACLES TO BE ISOLATED GROUND.

- KEYED NOTES**
1. LINE VOLT THERMOSTAT SUPPLIED BY MC, INSTALLED BY EC. PROVIDE SWITCH / HANDY BOX UNDER SINK.
  2. LINE VOLT THERMOSTAT SUPPLIED BY MC, INSTALLED BY EC. PROVIDE SWITCH / HANDY BOX INSIDE CABINET HEATER.
  3. SURFACE RACEWAY W/ SURFACE MOUNTED DEVICE.
  4. PUMP CONTROLLER & WIRING FROM CONTROLLER TO WELL PUMP SUPPLIED BY OTHERS, EC TO PROVIDE BRANCH CIRCUIT TO PUMP CONTROLLER AND TERMINATE CONDUCTORS.
  5. PROVIDE 4 ONE GANG SURFACE MOUNTED BOXES AT 70" AFF WITH 1" NON-METALLIC RACEWAY TO CEILING SPACE
  6. PROVIDE 1.1/2" NON-METALLIC RACEWAY FROM EXISTING TEL. TERMINATION BOARD TO CEILING SPACE ABOVE CLOSET 117. PROVIDE PLASTIC BUSHINGS.

**Pearson & Associates**  
 MECHANICAL & ELECTRICAL ENGINEERS  
 P.O. BOX 610 STOWE, VERMONT 05672  
 TEL. (802) 253-9607 FAX. (802) 253-9290

**Gossens Bachman, Inc.**  
 Architecture and Interior Design  
 35 Montpelier Street  
 Montpelier VT 05602  
 (802) 229-1664

STATE OF VERMONT  
 Department of Buildings & General Services  
 AGENCY OF ADMINISTRATION

MONTPELIER VERMONT

Agency of Transportation  
 HUNTINGTON HANGAR OFFICES  
 Berlin, Vermont

OFFICE AREA POWER PLAN

DATE: 11/19/00 SCALE: 1/4" = 1'-0"  
 DRAWN BY: B.W.M. APPROVED BY: E.E.P.

CAD FILE: P-HHO-E2  
 SHEET: E-2

