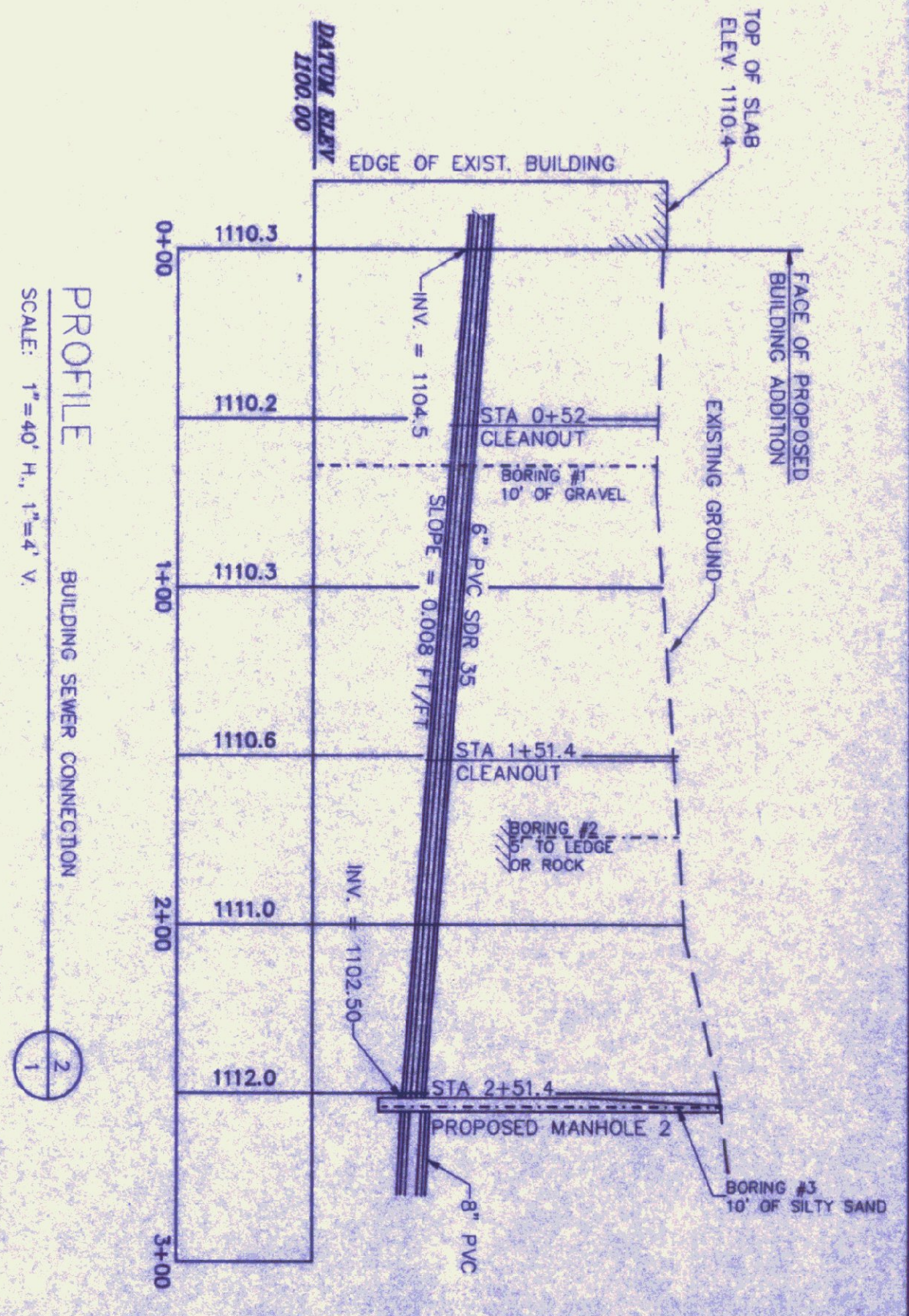
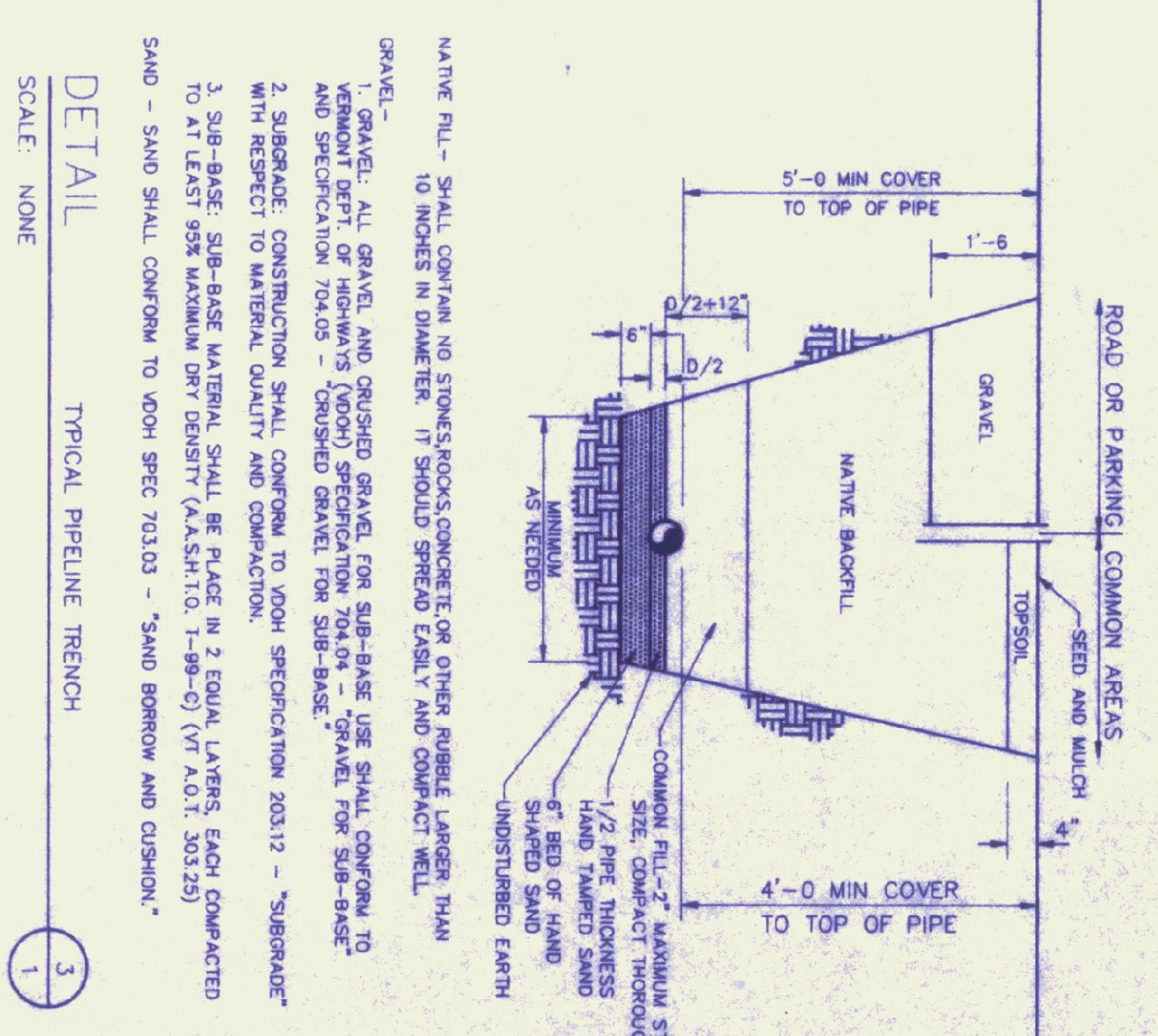
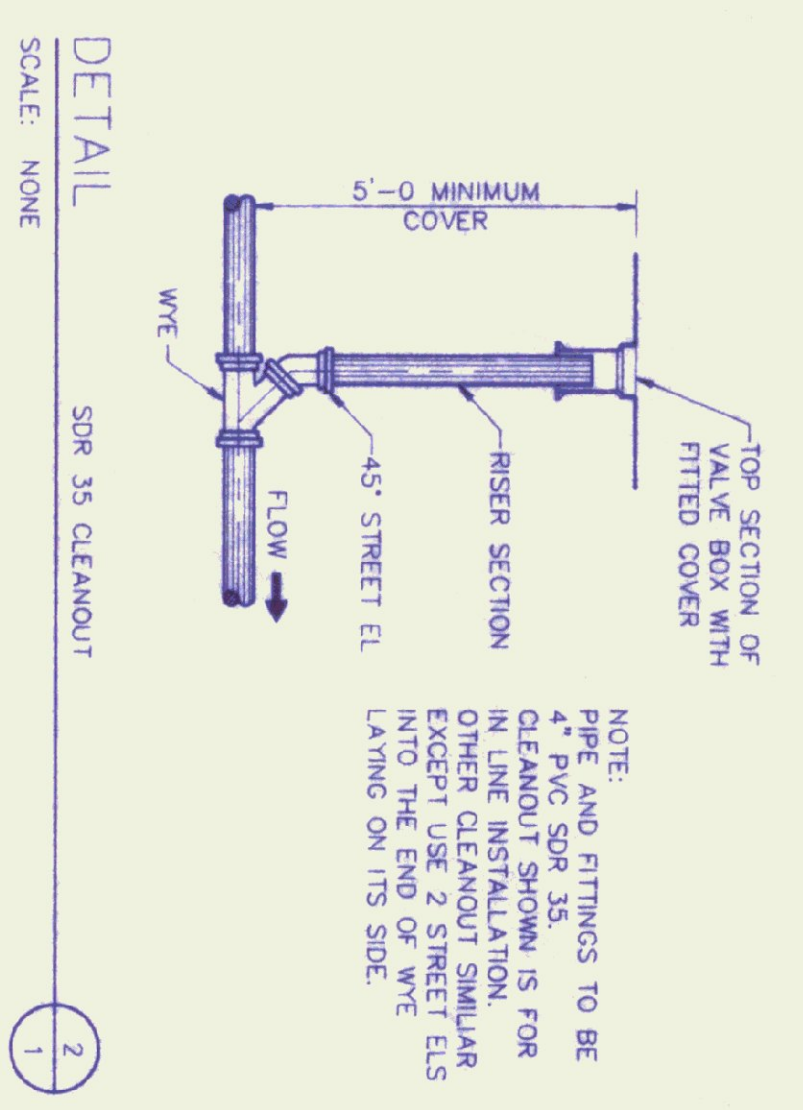
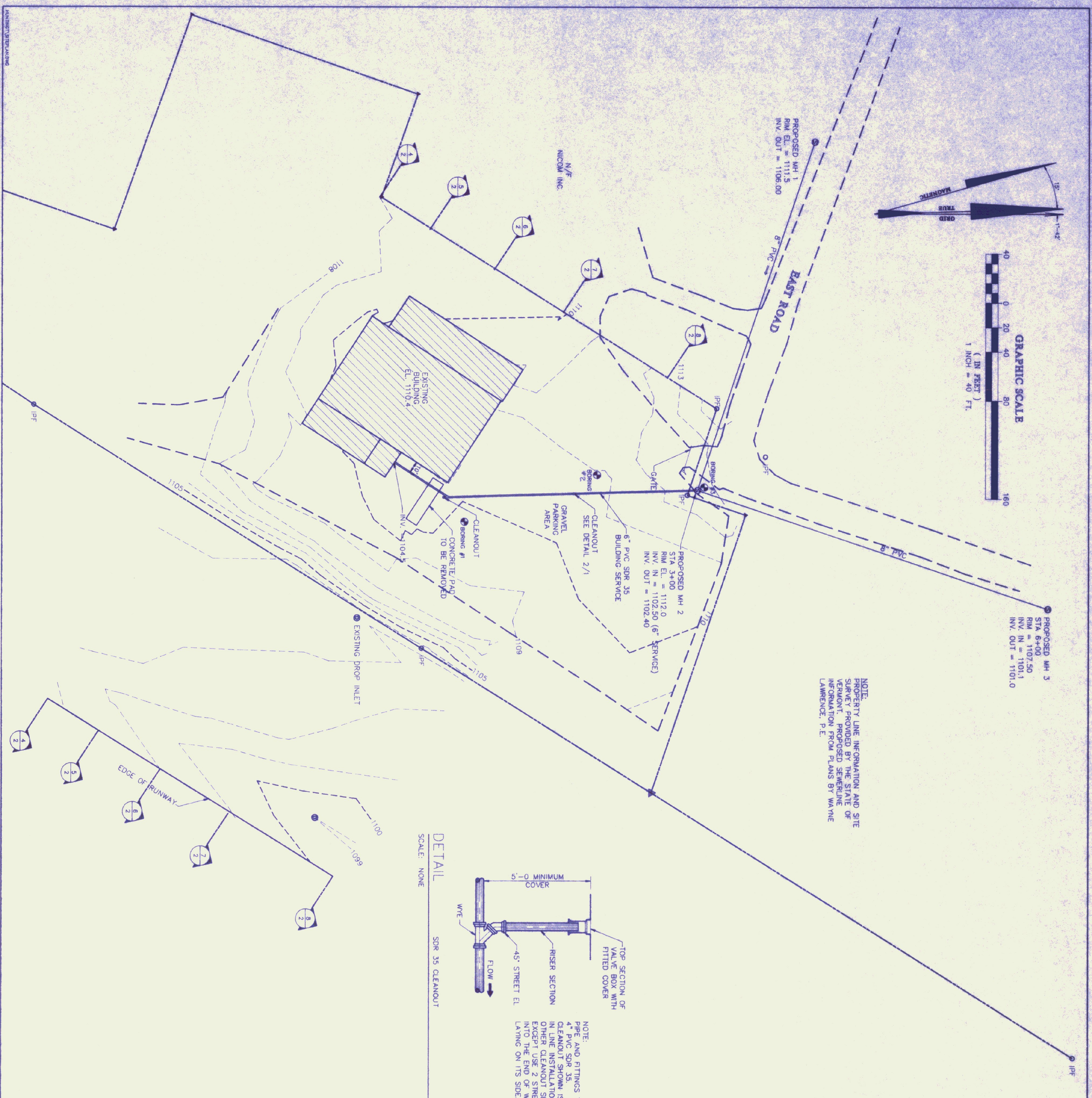


LOCATION MAP
N.T.S.

NOTES:

- 1) ALL MECHANICAL & ELECTRICAL ITEMS TO BE REMOVED FROM STRUCTURE. I.E. PIPING, CONDUIT, FINITUDE ECT...
- 2) AREA INSIDE OF BUILDING TO BE LEFT BROOM CLEAN. OUTSIDE AREA TO BE PAVED.
- 3) ALL DEBRIS TO BE REMOVED ON A DAILY BASIS (TO BECOME PROPERTY OF THE CONTRACTOR).
- 4) NO BURNING OF MATERIAL ON SITE.
- 5) NO POWER, WATER, OR SEWER IS ON SITE.
- 6) CONTRACTOR TO EXERCISE CAUTION NOT TO FURTHER DAMAGE EXISTING BUILDING.
- 7) CONTRACTOR REQUIRED TO SECURE BLDG. AFTER HOURS.

STATE OF VERMONT			VERMONT	
DEPARTMENT OF STATE BUILDINGS				
AGENCY OF ADMINISTRATION				
MONTPELIER, VERMONT				
AGENCY OF TRANSPORTATION PROPERTY				
PARTIAL DEMOLITION PLAN				
EDWARD F. KNAPP AIRPORT				
BERLIN				
DATE:	SCALE:	REVISIONS:	DWG. NO.	
JAN. 25 1991	1/8" = 1'-0"		5-1	
DRAWN BY:	APPROVED BY:			
P. McANDY	<i>[Signature]</i>			



PRELIMINARY

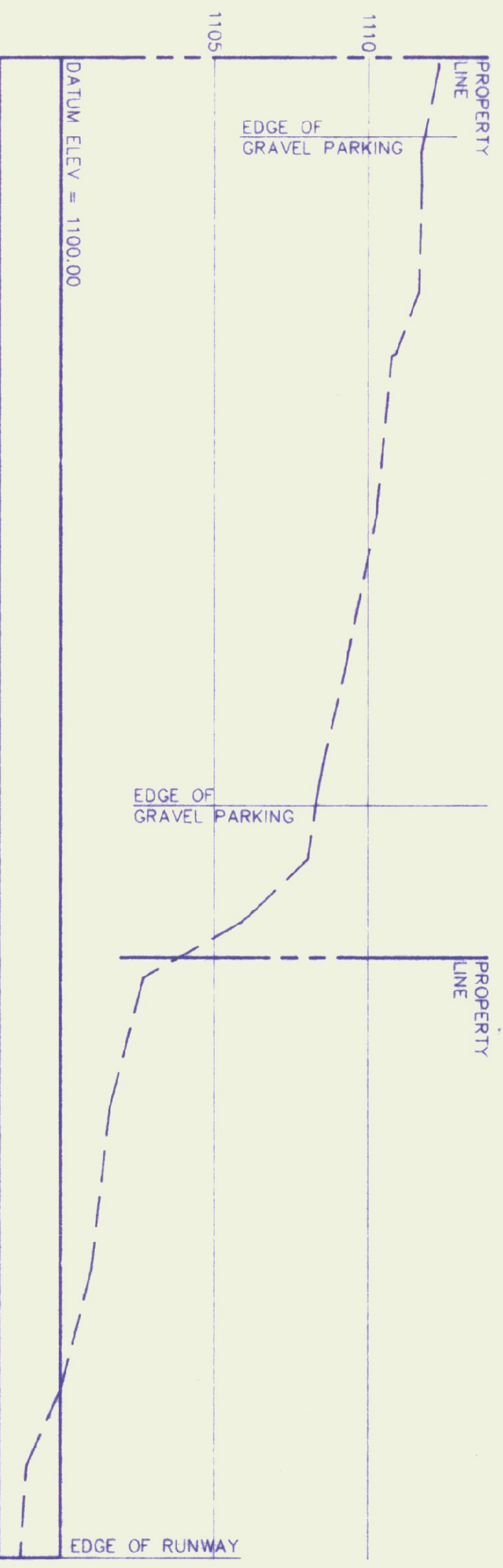
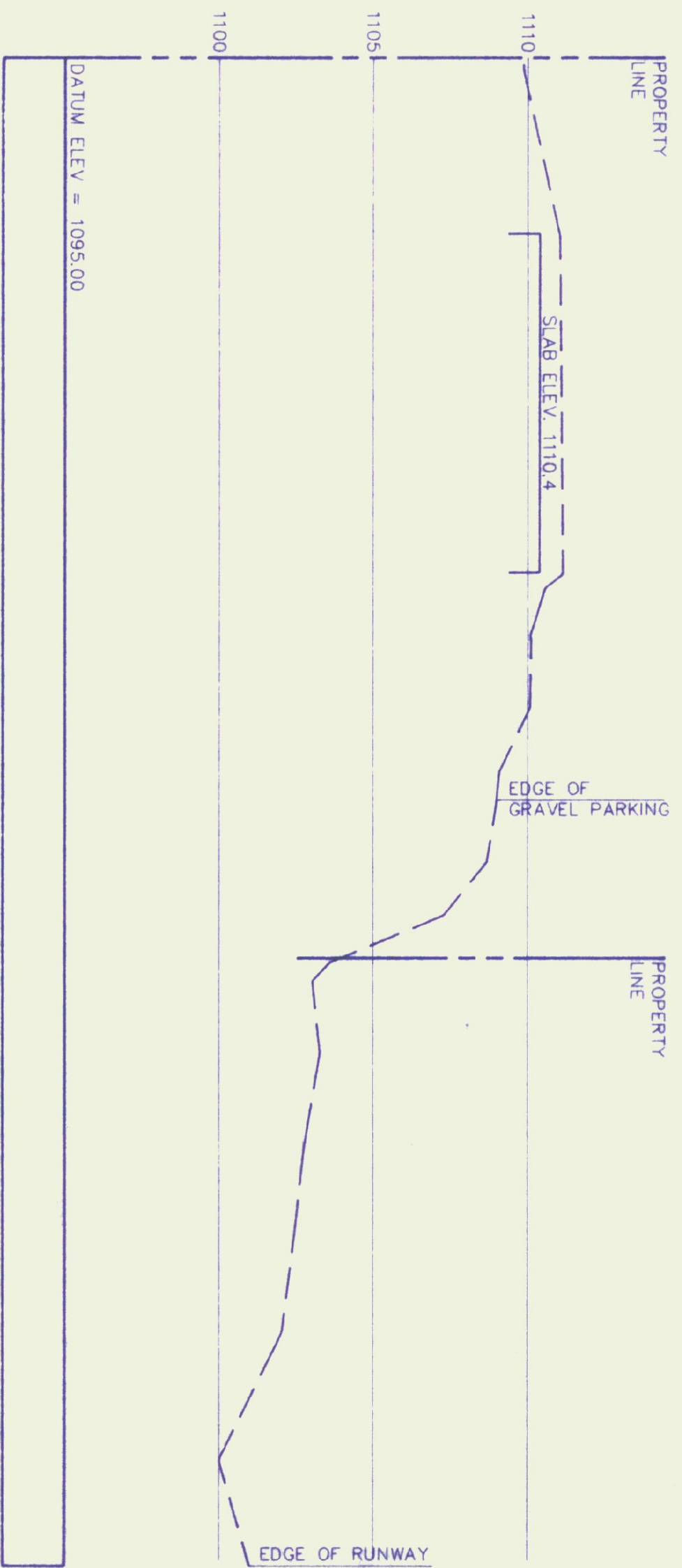
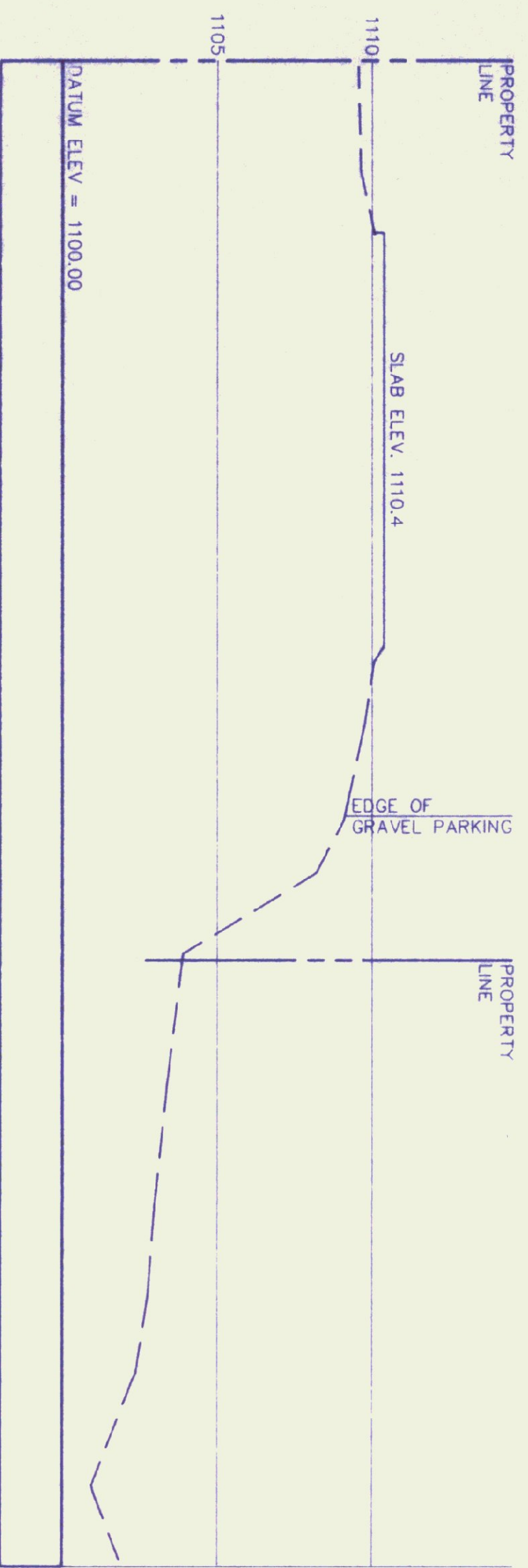
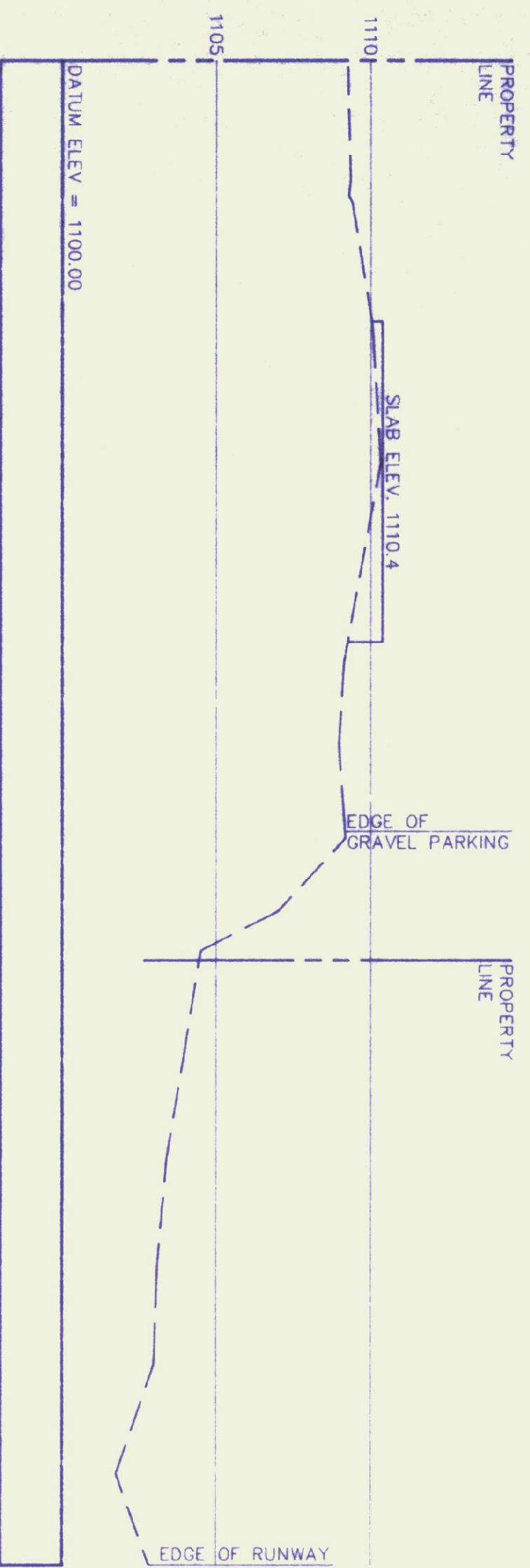
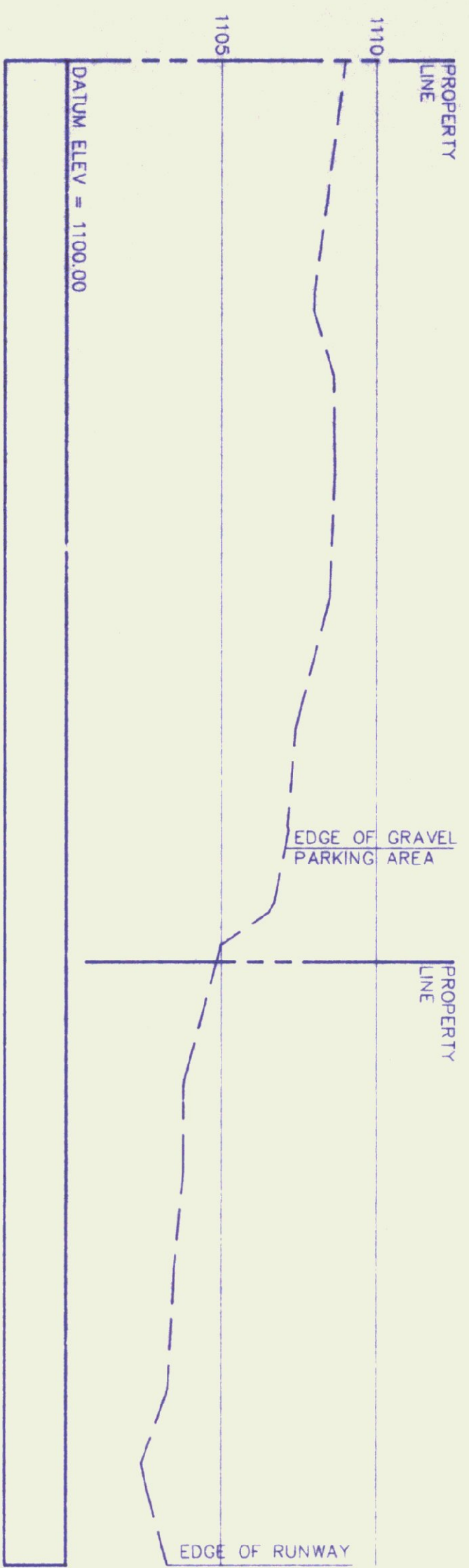
Rev No	Description	By	Checked by	App'd

STATE OF VERMONT
HUNTINGTON HOMES SITE
NEW SEWER SERVICE LINE

CHENETTE ENGINEERING, INC.
50 STATE STREET
MONTPELIER, VERMONT 05602

Scale 1" = 40'
Des. By MJC
Dwn. By DDH
Cpl. By MJC
Date JAN 1991
Dwg. 22-002-3

Sheet 1 of 2



Rev. No.	Date	Description	Made by	Checked by	App'd by
STATE OF VERMONT AIRPORT SITE CROSS SECTIONS					
SHEET 2 OF 2 Scale AS NOTED Des. By: MJC Dwn. By: DDH Ck'd. By: MJC Date: DEC 1990 Dwg. 22-002-3					
CHENETTE ENGINEERING, INC. 50 STATE STREET MONTPELIER, VERMONT 05602					