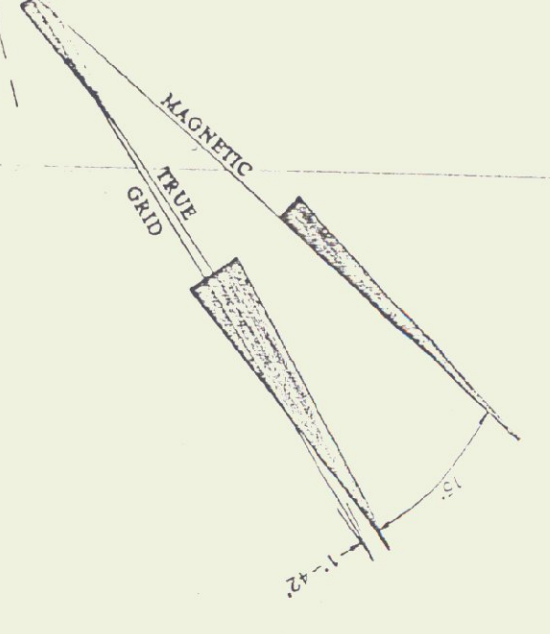
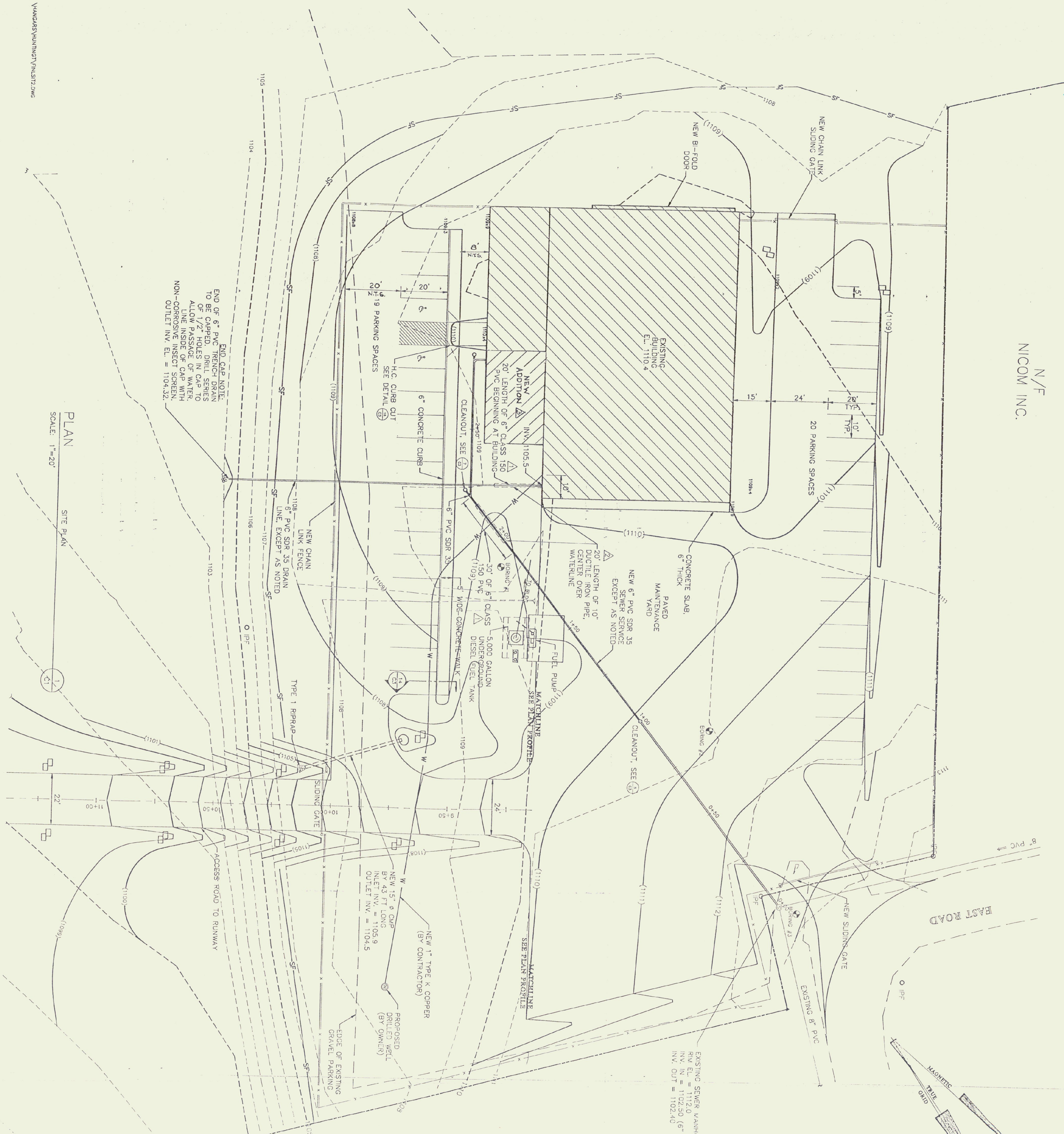


N/F
NICOM INC.

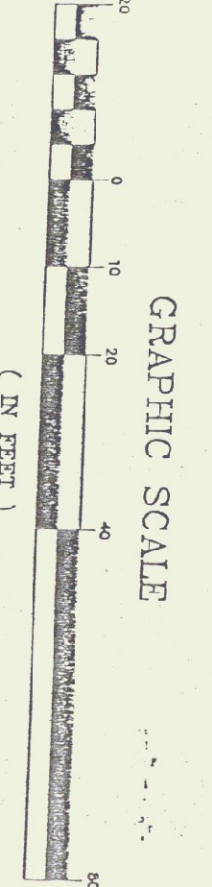
END OF 6" PVC FRENCH DRAIN
TO BE CAPPED. HOLE IN CASING
OF 1/2" HOLES IN CASING
ALLOW PASSAGE OF WATER
LINE INSIDE OF CAP WITH
NON-CORROSIVE INSECT SCREEN.
OUTLET INV. EL. = 1104.32

PLAN
SCALE: 1"=20'

SITE PLAN

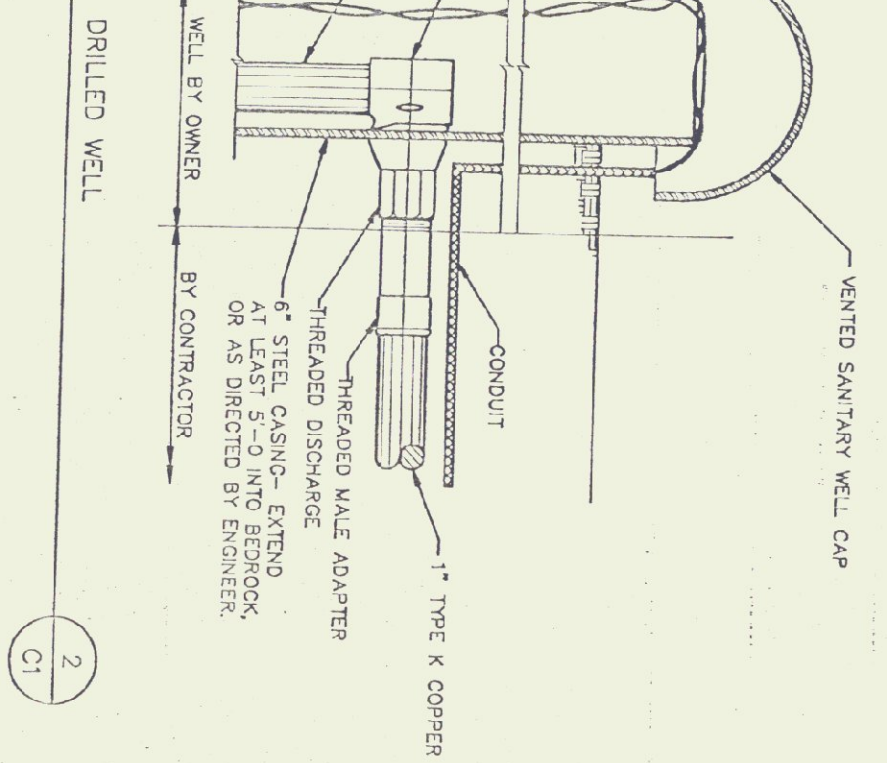


EXISTING SEWER MANHOLE 2
R/W EL. = 1112.0
INV. IN = 1102.50 (6" SERVICE)
INV. OUT = 1102.40

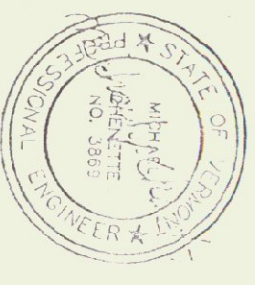


- LEGEND:
- 1100 --- EXISTING GROUND CONTOUR LINE
 - (1100) --- FINISHED GRADE CONTOUR LINE
 - W --- PROPOSED WATER SERVICE LINE
 - X --- EXISTING SECURITY FENCE
 - NEW CHAIN LINK FENCE
 - SF --- EXIST. GRAVEL ROAD/PARKING
 - PROPOSED SILT FENCE, SEE DETAIL 11/33
 - HAY BALE CHECK DAM, SEE DETAIL 9/03
 - o IPF --- IRON PIN FOUND
 - o --- CALCULATED POINT
 - o --- EXISTING SEWER MANHOLE
 - o --- EXISTING DROP INLET
 - o --- FINISH GRADE SPOT ELEVATION
 - o --- POINT OF ELEVATION
 - o --- FINISH ELEVATION

DETAIL
SCALE: NONE



2



Gossens Bachman, Inc.
Architecture and Interior Design
50 State Street
Montpelier, Vermont 05602
(802) 259-1004

CFI
Chenette
Engineering, Inc.
50 State Street
Montpelier, Vermont 05602
(802) 259-1004

Project Title:
Agency of
Transportation:
Huntington
Manager
Berlin, Vermont
A/R-04-3076

Revisions:
18 FEB 1993
SCALE 1/32 SERV SIZE
7 TONE, PERKS
TYPE MARKING/ADDITION

Job Number:
Drawn By: CFI
Checked By: CFI
Scale: as noted
Date: Nov 11, 1992
Sheet Title:
**Civil Site
Plan**

Sheet Number:
C1
©Gossens Bachman, Inc.

VAAG0485.V\HUNTINGTON\1192.DWG

