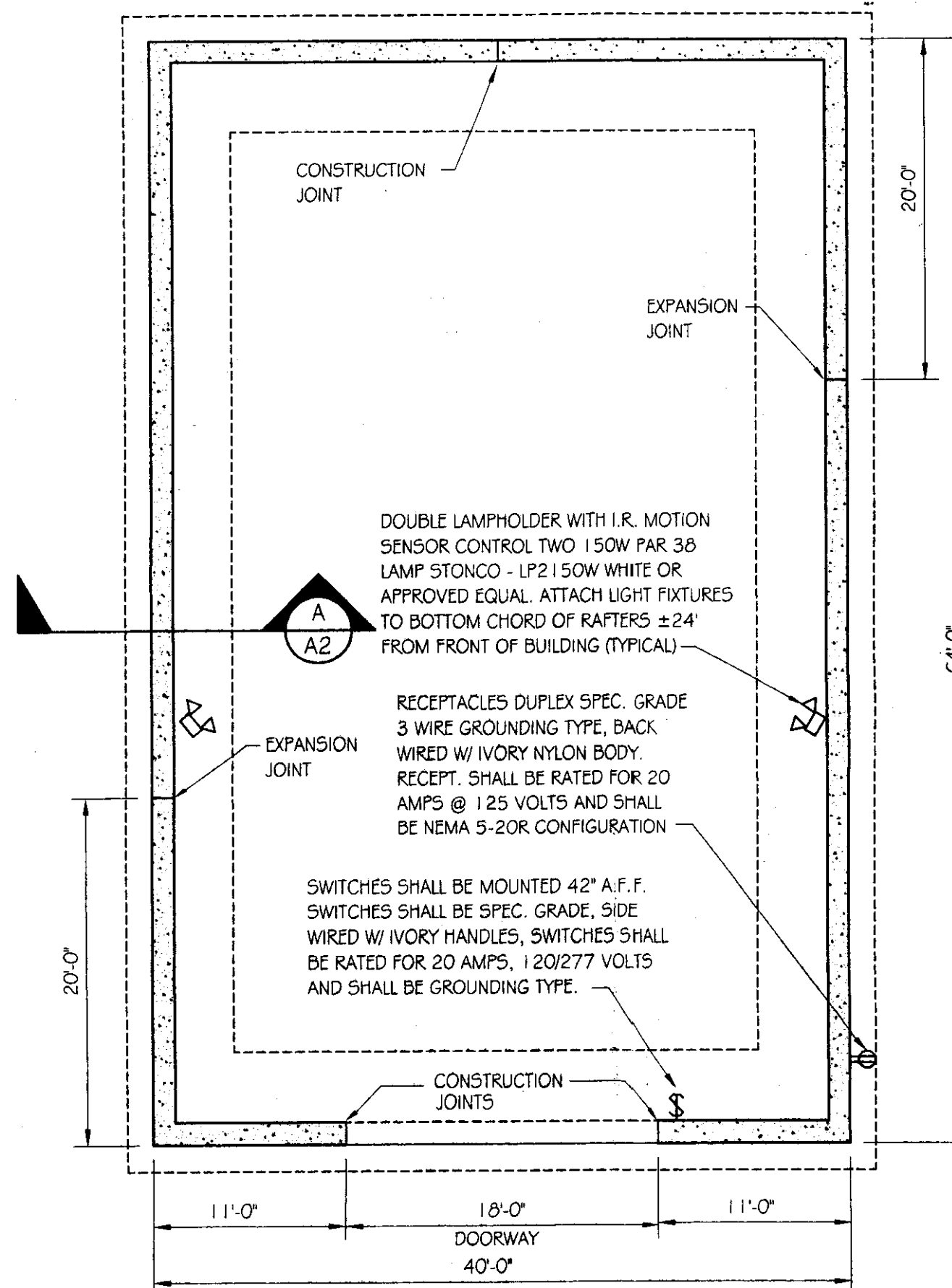
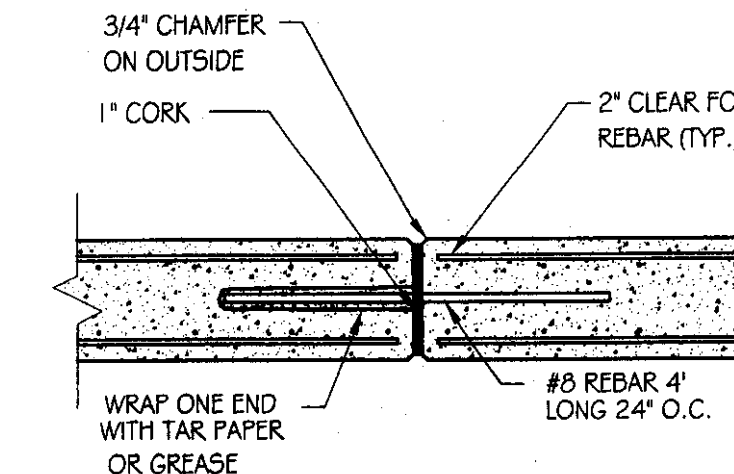


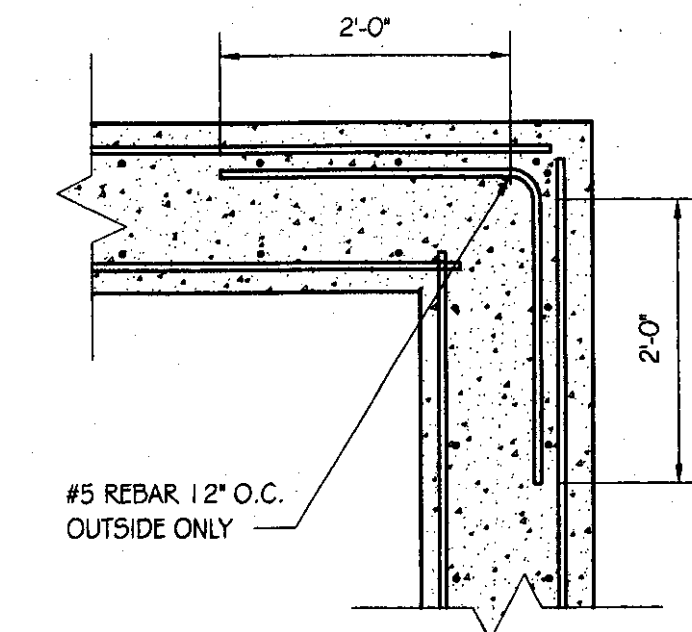
SIDE ELEVATION
SCALE: 1/8" = 1'-0"



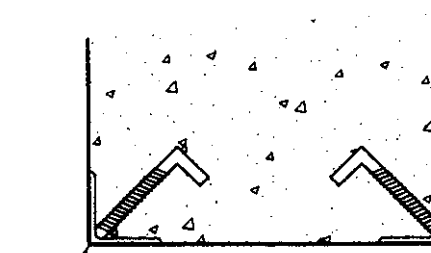
FOUNDATION PLAN
SCALE: 1/8" = 1'-0"



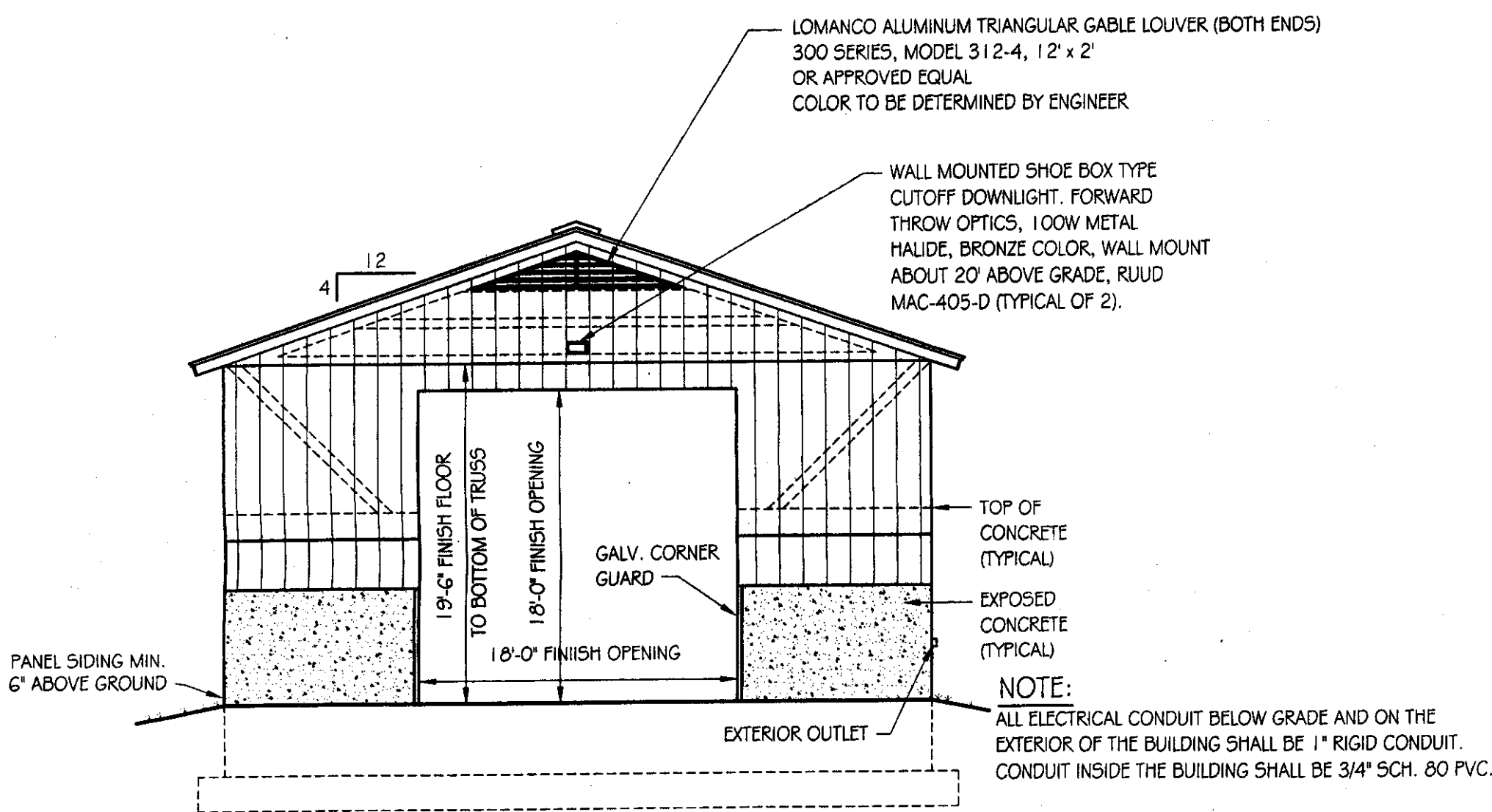
EXPANSION JOINT DETAIL
SCALE: 1/2" = 1'-0"



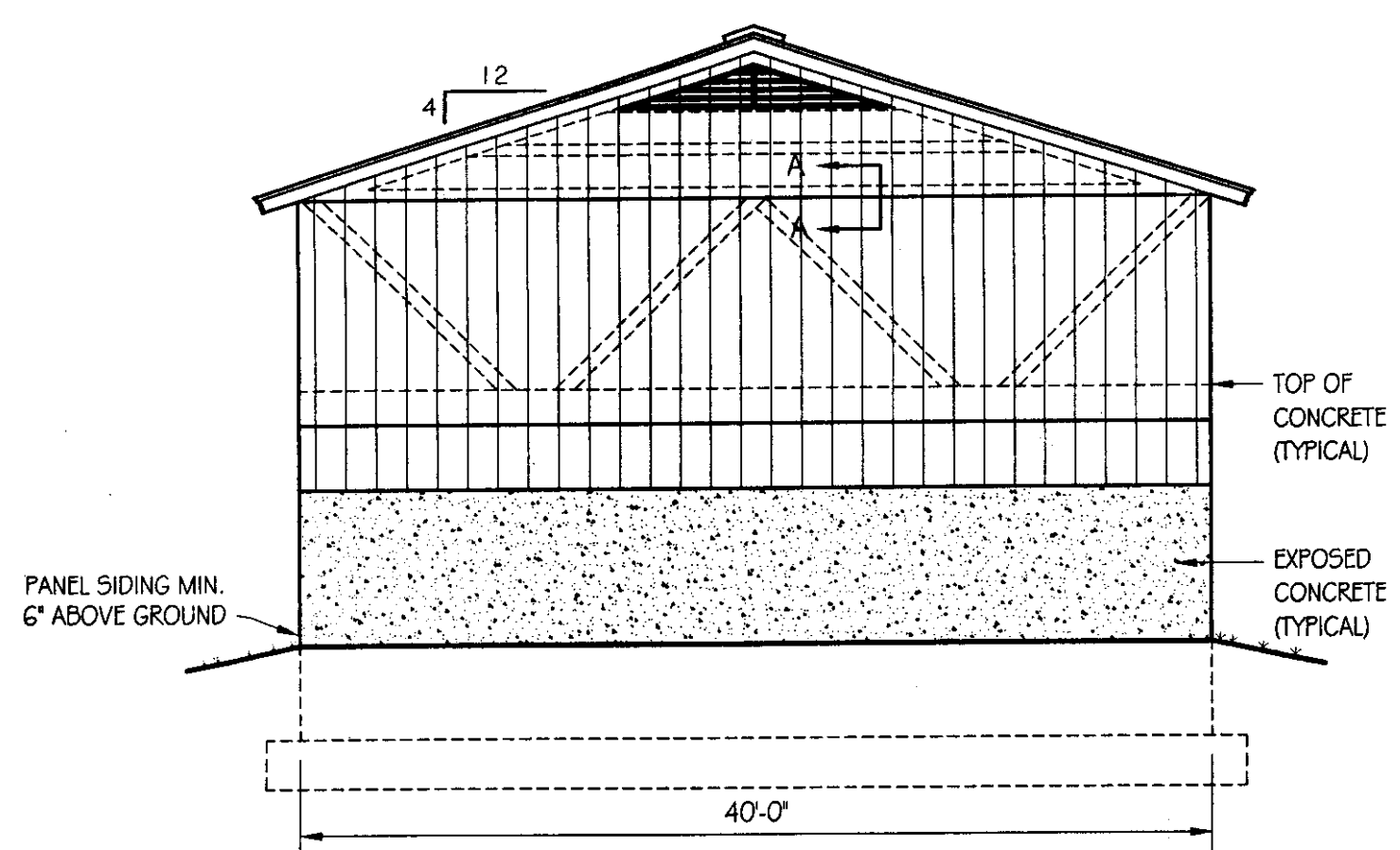
CORNER DETAIL
SCALE: 3/4" = 1'-0"



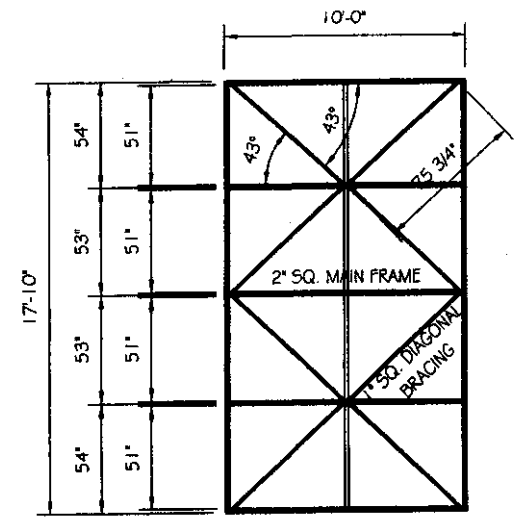
CORNER DETAIL AT OPENINGS
SCALE: 1 1/2" = 1'-0"



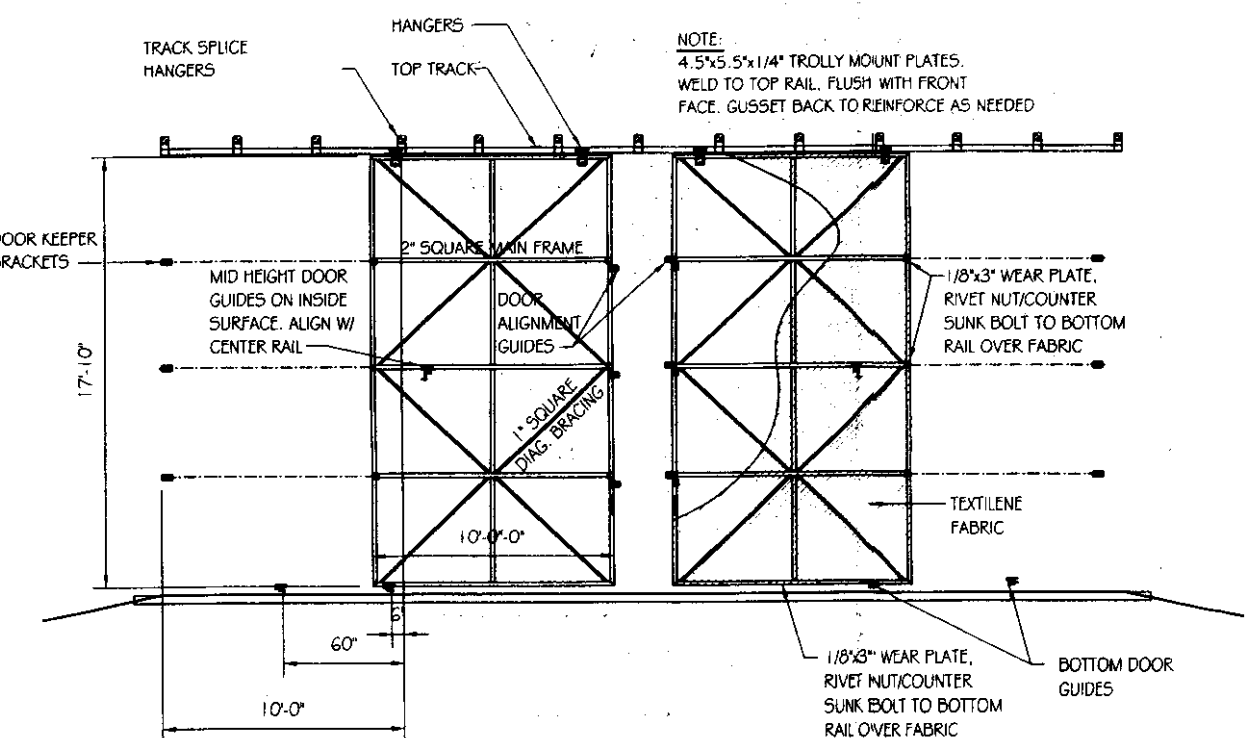
FRONT ELEVATION
SCALE: 1/8" = 1'-0"



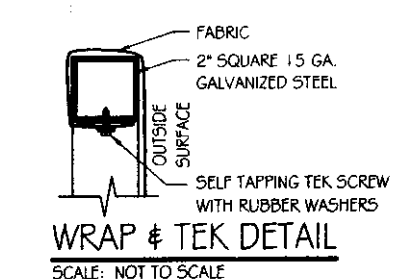
BACK ELEVATION
SCALE: 1/8" = 1'-0"



DOOR FRAMING DETAIL
SCALE: 1/8" = 1'-0"



DOOR DETAIL
SCALE: 1/8" = 1'-0"



WRAP & TEK DETAIL
SCALE: NOT TO SCALE

GENERAL NOTES

TRUSS NOTES:
TRUSS MANUFACTURER TO PROVIDE DEPT. OF STATE BUILDINGS ENGINEER A SET OF ENGINEERED & STAMPED DRAWINGS FOR APPROVAL PRIOR TO TRUSS MANUFACTURE (ENGINEER MUST BE LICENSED IN VERMONT).
TRUSS MANUFACTURER TO PROVIDE THE CONTRACTOR WITH ALL NECESSARY INSTRUCTIONS FOR PROPER TRUSS INSTALLATION, ANCHORAGE, BRACING, TRUSS DESIGN LOADS IN ACCORDANCE WITH THE 1987 B.O.C.A. FOR VERMONT.
MINIMUM LOADS:
LIVE - PER 1987 B.O.C.A. FOR VERMONT (40 PSF MIN.)
DEAD - AS CALCULATED FROM TRUSS & ROOF MATERIAL
5 PSF ON BOTTOM CHORD
WIND - 25 PSF
DIAGONAL WIND BRACING PER TRUSS MANUFACTURE.

LUMBER NOTES:
FRAMING MEMBERS TO BE KILN DRIED CONSTRUCTION GRADE SPRUCE 54S 19% MOISTURE CONTENT.
PLATES & NAILERS IN CONTACT WITH CONCRETE TO BE CCA 0.40 TREATED ALL FASTENERS TO BE GALVANIZED AND SHALL BE APPROPRIATELY SIZED.
TRIM AND SOFFIT MATERIAL TO BE NATIVE ROUGH SAWN WHITE PINE, SPRUCE, EASTERN FIR OR RED PINE.

SMARTSIDE PANEL NOTES:
8d GALVANIZED NAILS FOR 1/32\"/>

FINISH NOTES:
ROOFING COLOR: IVY GREEN (BY AMERI-DRAIN)
APPLY PAINT AS SOON AS POSSIBLE.
PAINT TO BE OLYMPIC ACRYLIC LATEX SATIN FINISH.
COLOR TO BE DETERMINED BY ENGINEER.

CONCRETE NOTES: PER A.O.T. STANDARD.
CONCRETE STRENGTH TO BE 3500 PSI
CONCRETE FINISH TO BE FLOATED.

CONCRETE TO BE CLASS "B" PER AOT STANDARD SPECIFICATIONS TABLE 501.03A WITH 5% ± 1% AIR ENTRAINMENT, AND 2'-4" SLUMP.
RE-BAR TO BE CONTINUOUS THROUGH CONSTRUCTION JOINTS.

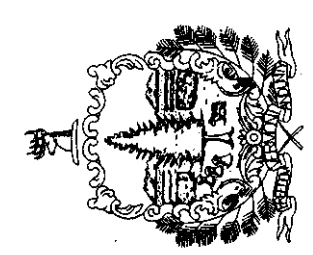
CONTRACTOR TO LEAVE NO METAL WITHIN 1" OF SURFACE. USE 1" DEEP PLASTIC CONES AT ALL TIES AND PLUG ALL THE HOLES WITH AN APPROVED NON-SHRIKING GROUT.
ALL RE-BAR TO BE GRADE 60 WITH 3" CLEARANCE ON ALL SIDES UNLESS NOTED OTHERWISE.

RE-BAR TO BE STORED ON BLOCKING 4" MINIMUM ABOVE GROUND.
CONCRETE SUPPLIER TO PROVIDE TEST CYLINDERS FOR CONCRETE TESTING.
ALL CONCRETE TESTING TO BE DONE BY OWNER. CONTRACTOR IS RESPONSIBLE FOR SCHEDULING.

CONCRETE CURING SHALL FOLLOW IMMEDIATELY AFTER FORM REMOVAL PER A.O.T. STANDARD 501.17A. WATER CURING WILL BE REQUIRED, UNLESS ALTERNATE MEANS OF CURING IS APPROVED, IN WRITING, BY THE PROJECT ENGINEER.



STATE OF VERMONT
Department of Buildings and General Services
Agency of Administration
Montpelier, Vermont



AGENCY OF TRANSPORTATION
NEW 40' x 64' SALT SHED
PLAN, DETAILS & ELEVATIONS

SCALE:	DATE:	DRAWN BY:	APPR. BY:
AS NOTED	MAY 2005	S.K. Janawicz	R. BARRY

REVISIONS

AGENCY OF TRANSPORTATION
NEW 40' x 64' SALT SHED
PLAN, DETAILS & ELEVATIONS