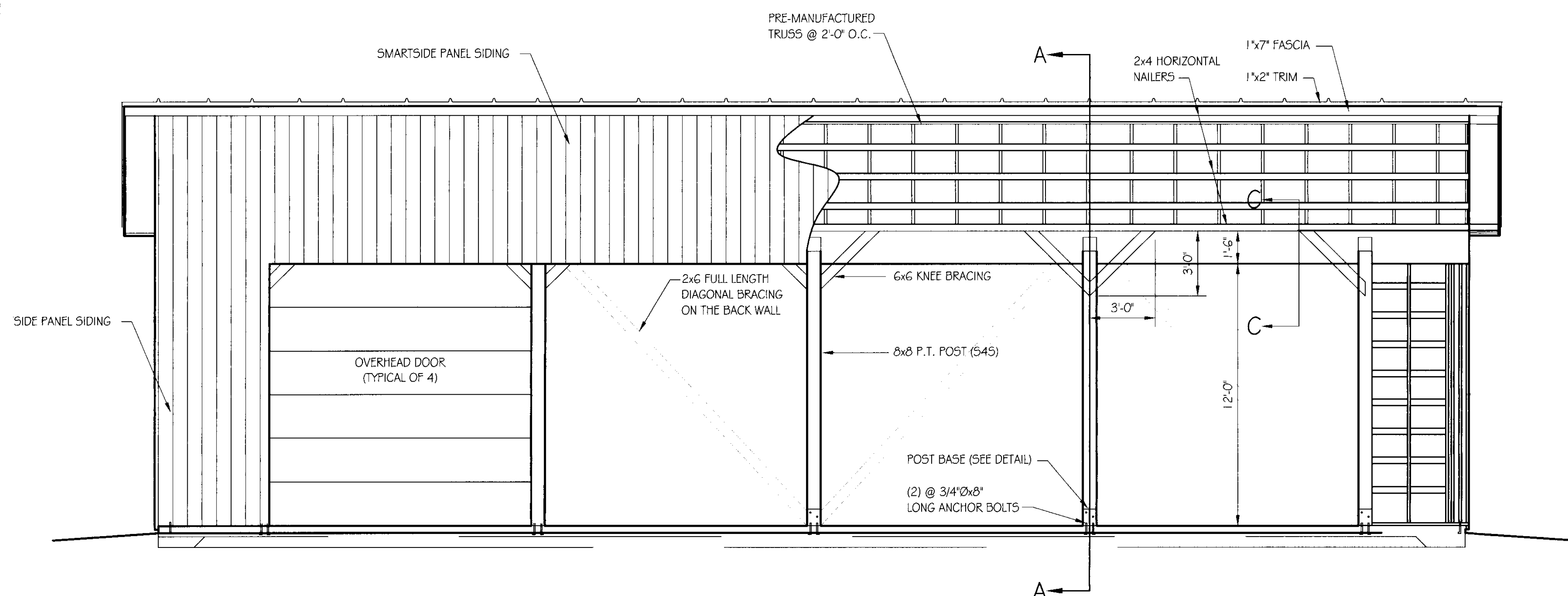
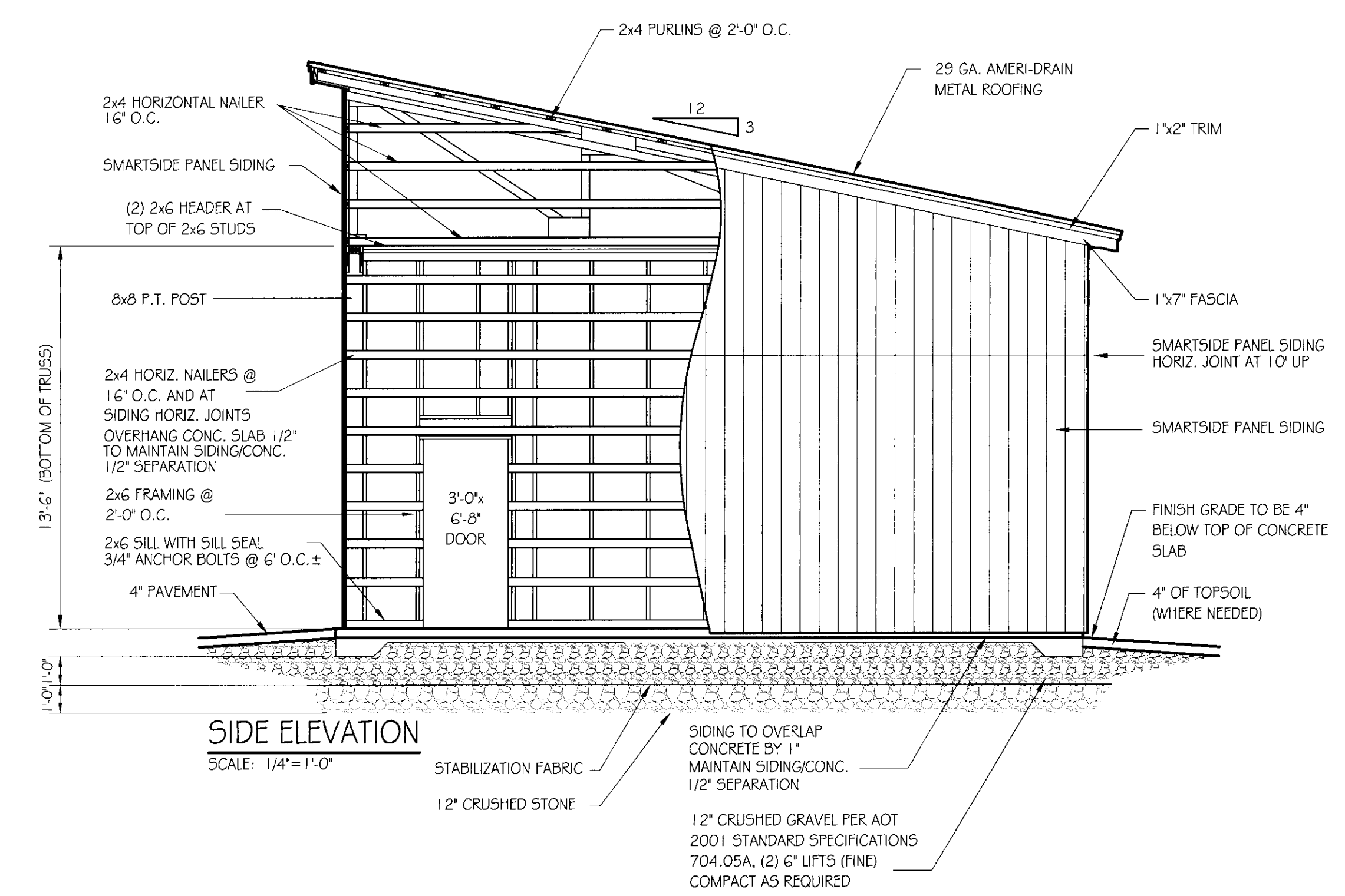


SHED PLAN
SCALE: 1/4"=1'-0"



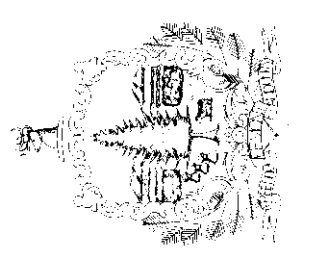
FRONT ELEVATION
SCALE: 1/4"=1'-0"



SIDE ELEVATION
SCALE: 1/4"=1'-0"



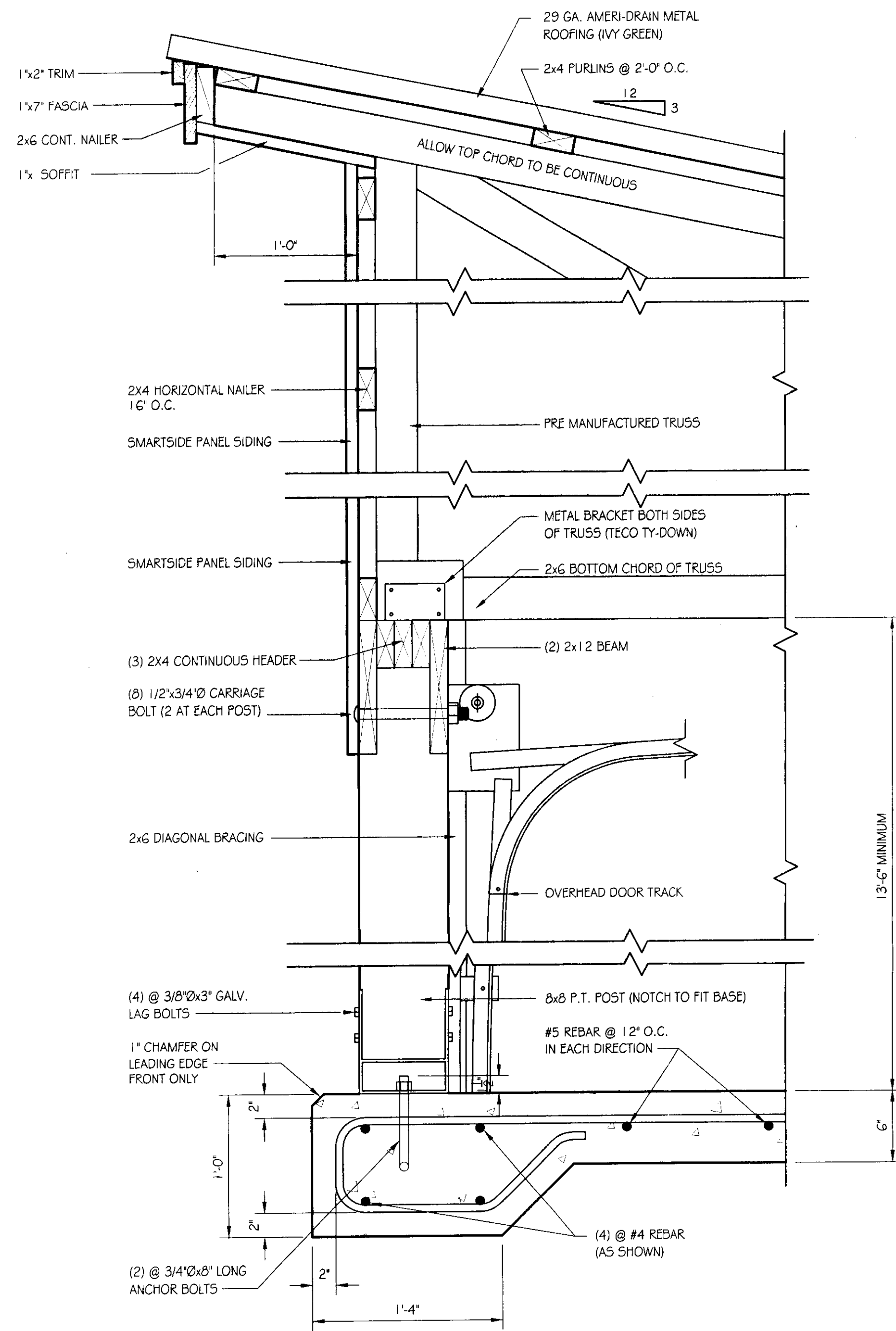
STATE OF VERMONT
Department of Buildings
and General Services
Agency of Administration
Montpelier, Vermont



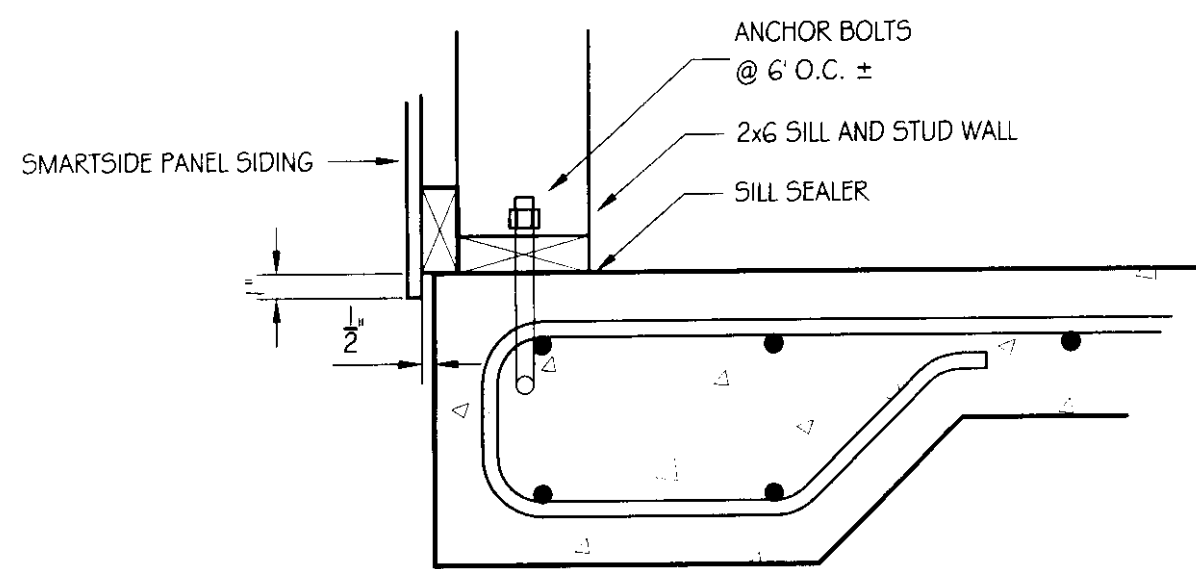
AGENCY OF TRANSPORTATION
NEW HAVEN DISTRICT GARAGE
NEW 26' x 60' STORAGE SHED
PLANS & ELEVATIONS

SCALE:	AS NOTED	DATE:	MAY 2005	DRAWN BY:	S. K...Janawicz	APPR. BY:	R. BARRY

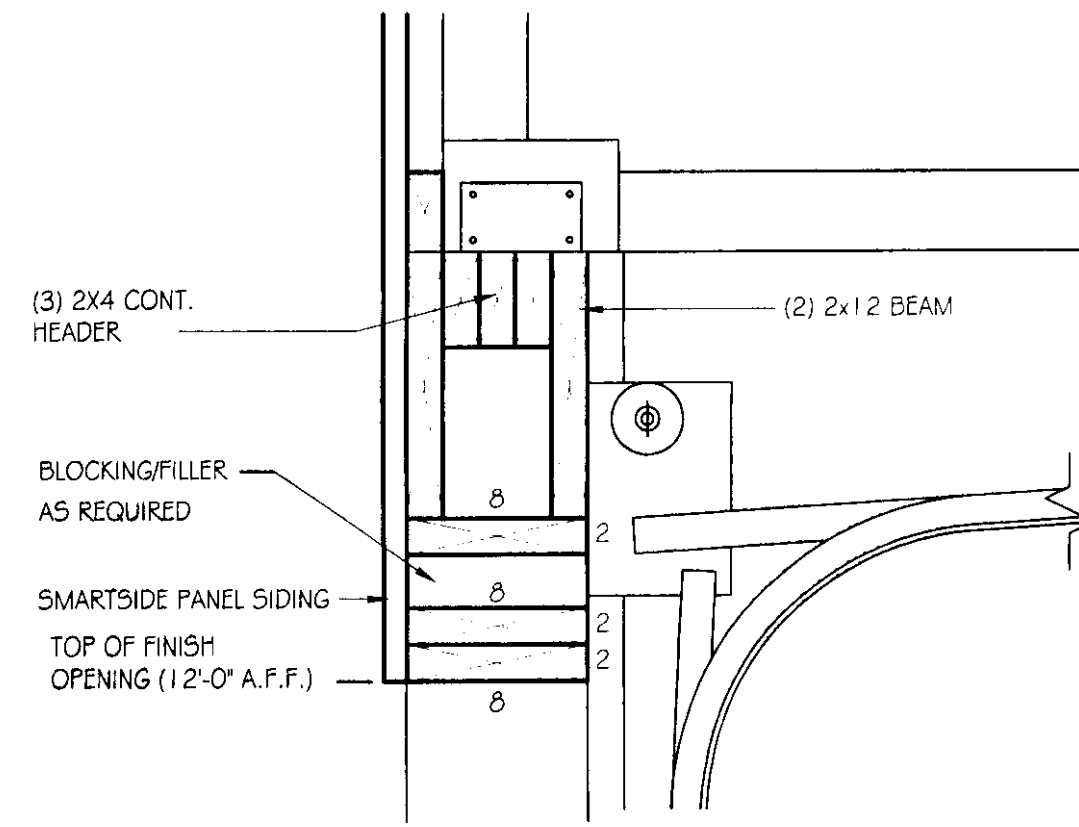
AGENCY OF TRANSPORTATION
NEW 26' x 60' STORAGE SHED
PLANS AND ELEVATIONS



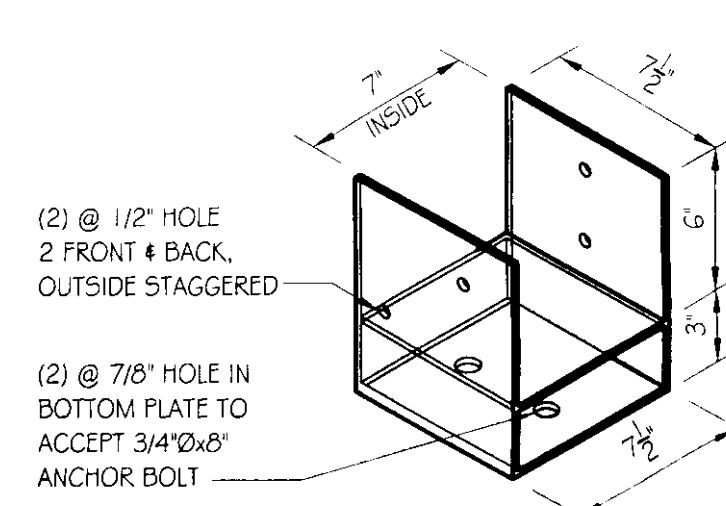
SECTION A-A
SCALE: 1/2" = 1'-0"



SECTION E-E
SCALE: 1/2" = 1'-0"



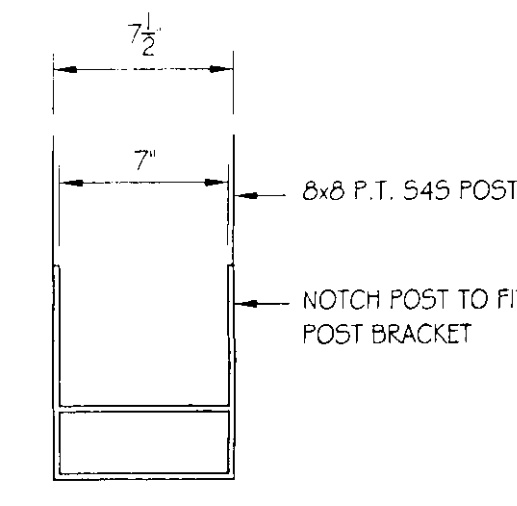
SECTION C-C
SCALE: 1/2" = 1'-0"



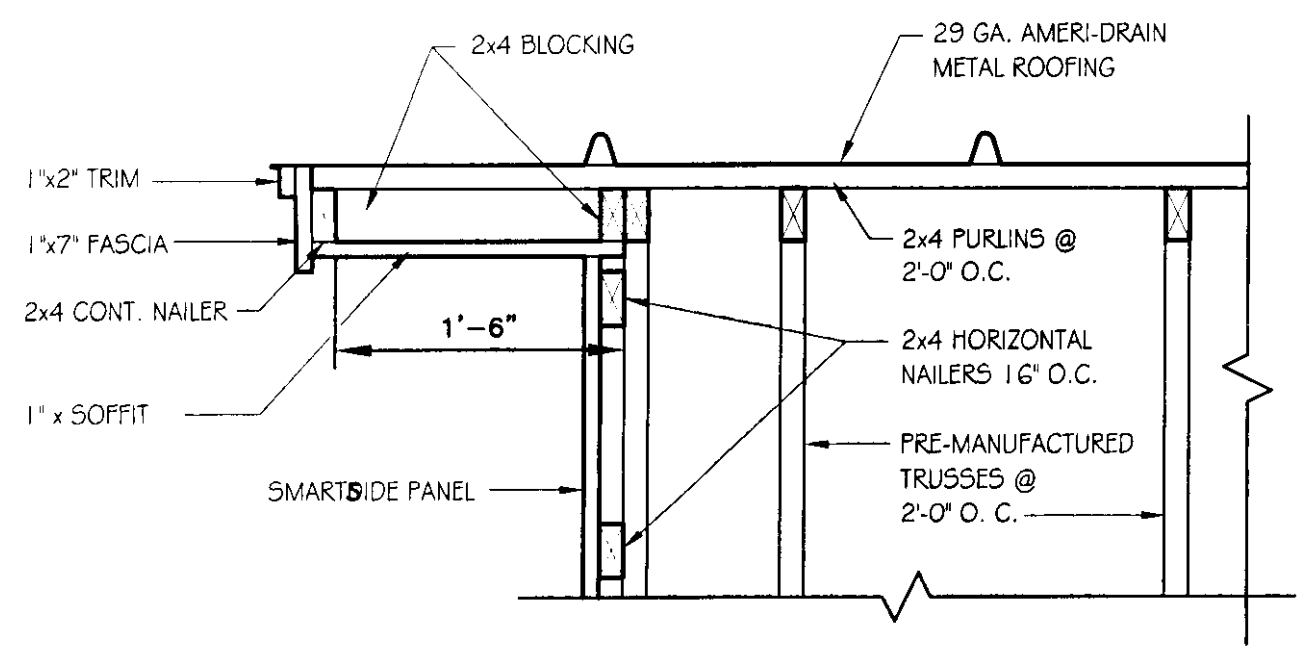
COLUMN BASE DETAIL
SCALE: 1/2" = 1'-0"

NOTE:
POST BASE TO BE FABRICATED FROM 1/4\"/>

NOTE
INSIDE LAG BOLTS TO BE IN C OF POST SO THEY WILL NOT INTERFERE WITH THE OVERHEAD DOOR TRACK.



SECTION D-D
SCALE: 1/2" = 1'-0"



SECTION B-B SOFFIT DETAIL
SCALE: 1" = 1'-0"

GENERAL NOTES

TRUSS NOTES:
TRUSS MANUFACTURER TO PROVIDE DEPT. OF STATE BUILDINGS ENGINEER A SET OF ENGINEERED & STAMPED DRAWINGS FOR APPROVAL PRIOR TO TRUSS MANUFACTURE (ENGINEER MUST BE LICENSED IN VERMONT).

TRUSS MANUFACTURER TO PROVIDE THE CONTRACTOR WITH ALL NECESSARY INSTRUCTIONS FOR PROPER TRUSS INSTALLATION, ANCHORAGE, BRACING, TRUSS DESIGN LOADS IN ACCORDANCE WITH THE 1987 B.O.C.A. FOR VERMONT.

MINIMUM LOADS:
LIVE - PER 1987 B.O.C.A. FOR VERMONT (40 PSF MIN.)
DEAD - AS CALCULATED FROM TRUSSES & ROOF MATERIAL
5 PSF ON BOTTOM CHORD
WIND - 25 PSF
DIAGONAL WIND BRACING PER TRUSS MANUFACTURE.

LUMBER NOTES:
FRAMING MEMBERS TO BE KILN DRIED CONSTRUCTION GRADE SPRUCE 545 19% MOISTURE CONTENT.
PLATES & NAILERS IN CONTACT WITH CONCRETE TO BE CCA 0.40 TREATED ALL FASTENERS TO BE GALVANIZED AND SHALL BE APPROPRIATELY SIZED.
TRIM AND SOFFIT MATERIAL TO BE NATIVE ROUGH SAWN WHITE PINE, SPRUCE, EASTERN FIR OR RED PINE.

SMARTSIDE PANEL NOTES:
6d GALVANIZED NAILS FOR 1/32\"/>

FINISH NOTES:
ROOFING COLOR: IVY GREEN (BY AMERI-DRAIN)
APPLY PAINT AS SOON AS POSSIBLE.
PAINT TO BE OLYMPIC ACRYLIC LATEX SATIN FINISH.
COLOR TO BE DETERMINED BY ENGINEER.

CONCRETE NOTES: PER A.O.T. STANDARD
CONCRETE STRENGTH TO BE 3500 PSI;
CONCRETE FINISH TO BE FLOATED.

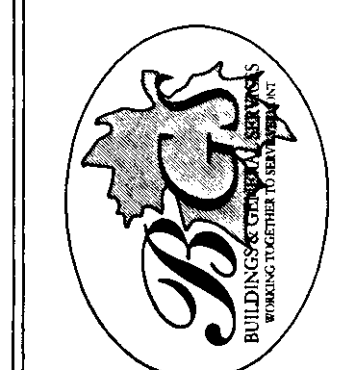
CONCRETE TO BE CLASS "B" PER AOT STANDARD SPECIFICATIONS TABLE 501.03A WITH 5% ± 1% AIR ENTRAINMENT, AND 2"-4" SLUMP.

RE-BAR TO BE CONTINUOUS THROUGH CONSTRUCTION JOINTS.
CONTRACTOR TO LEAVE NO METAL WITHIN 1" OF SURFACE. USE 1" DEEP PLASTIC CONES AT ALL TIES AND PLUG ALL TIE HOLES WITH AN APPROVED NON-SHRINK GROUT.

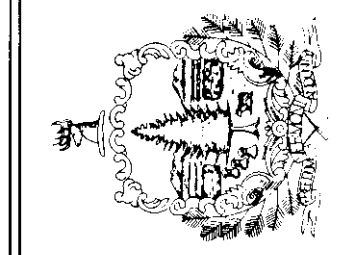
ALL RE-BAR TO BE GRADE 60 WITH 3" CLEARANCE ON ALL SIDES UNLESS NOTED OTHERWISE.

RE-BAR TO BE STORED ON BLOCKING 4" MINIMUM ABOVE GROUND.
CONCRETE SUPPLIER TO PROVIDE TEST CYLINDERS FOR CONCRETE TESTING.

ALL CONCRETE TESTING TO BE DONE BY OWNER. CONTRACTOR IS RESPONSIBLE FOR SCHEDULING.
CONCRETE CURING SHALL FOLLOW IMMEDIATELY AFTER FORM REMOVAL PER A.O.T. STANDARD 501.17A. WATER CURING WILL BE REQUIRED, UNLESS ALTERNATE MEANS OF CURING IS APPROVED, IN WRITING, BY THE PROJECT ENGINEER.



STATE OF VERMONT
Department of Buildings
and General Services
Agency of Administration
Montpelier, Vermont



AGENCY OF TRANSPORTATION
NEW HAVEN DISTRICT GARAGE
NEW 26' x 60' STORAGE SHED
DETAILS

REVISIONS	
-----------	--

SCALE:	AS NOTED
DATE:	MAY 2005
DRAWN BY:	S.K. Janawicz
APPR. BY:	R. BARRY

AGENCY OF TRANSPORTATION
NEW 26' x 60'
STORAGE SHED
DETAILS