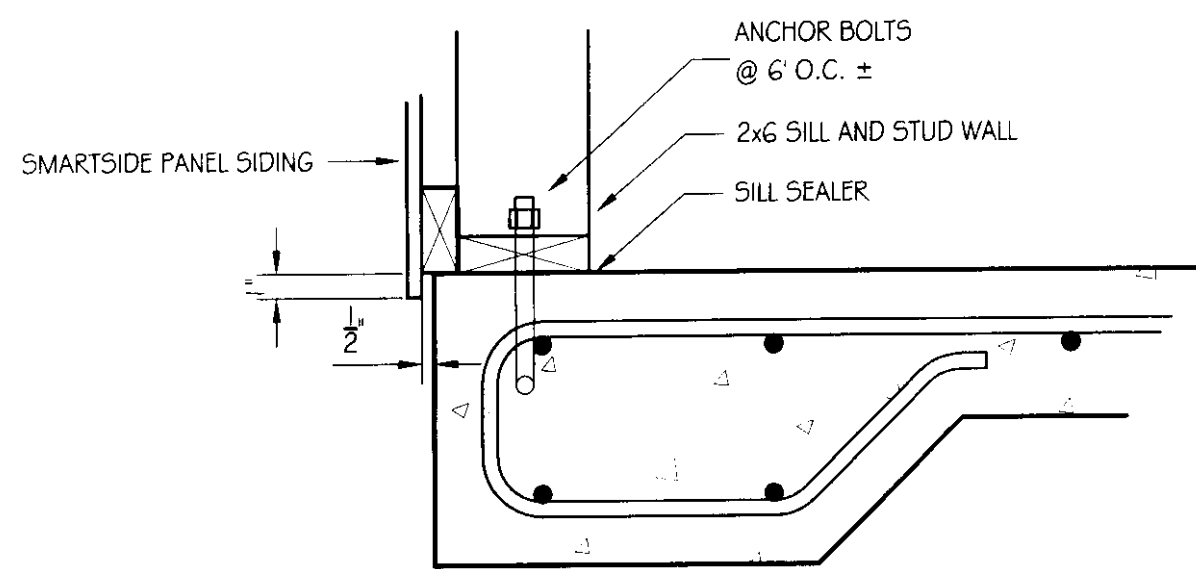
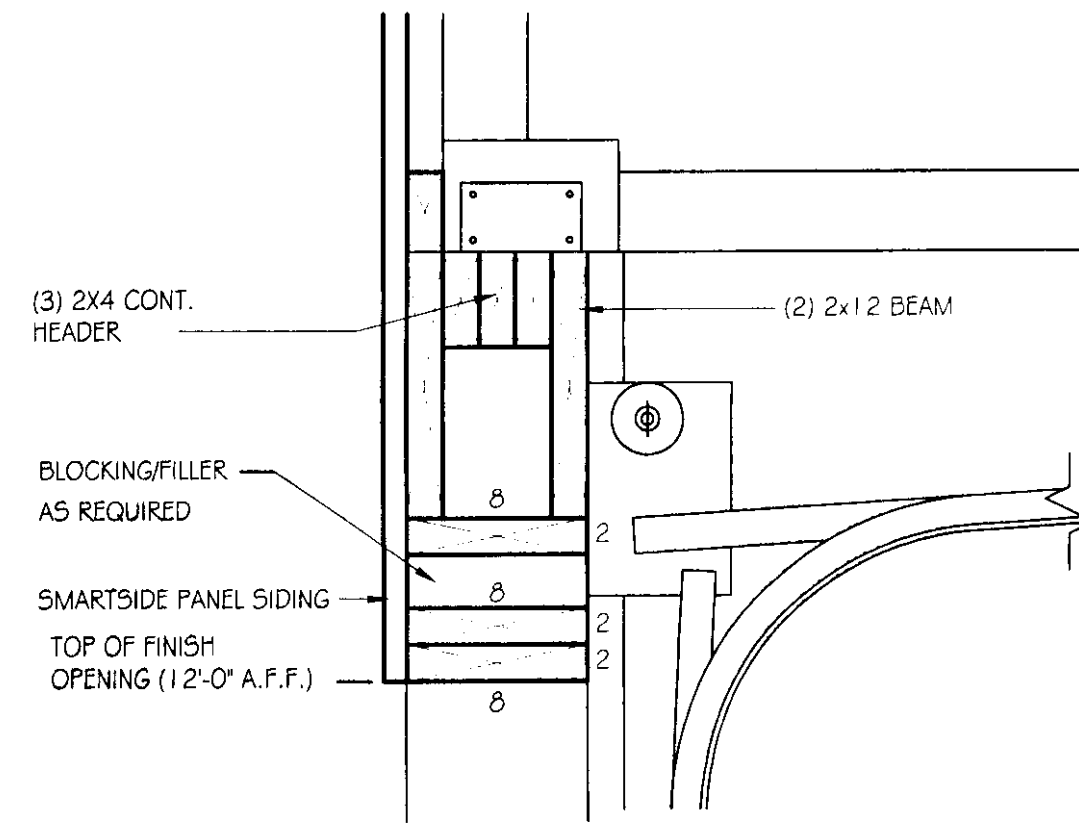


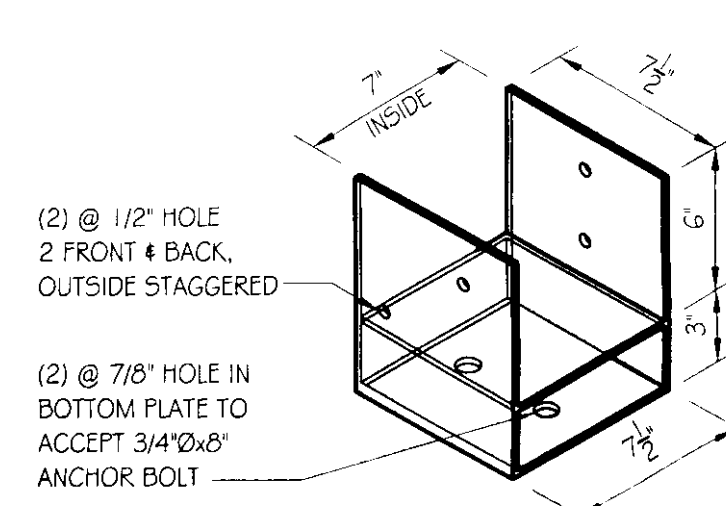
**SECTION A-A**  
SCALE: 1/2" = 1'-0"



**SECTION E-E**  
SCALE: 1/2" = 1'-0"

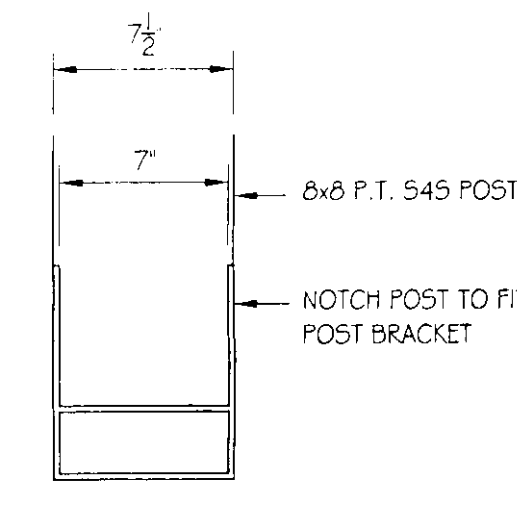


**SECTION C-C**  
SCALE: 1/2" = 1'-0"

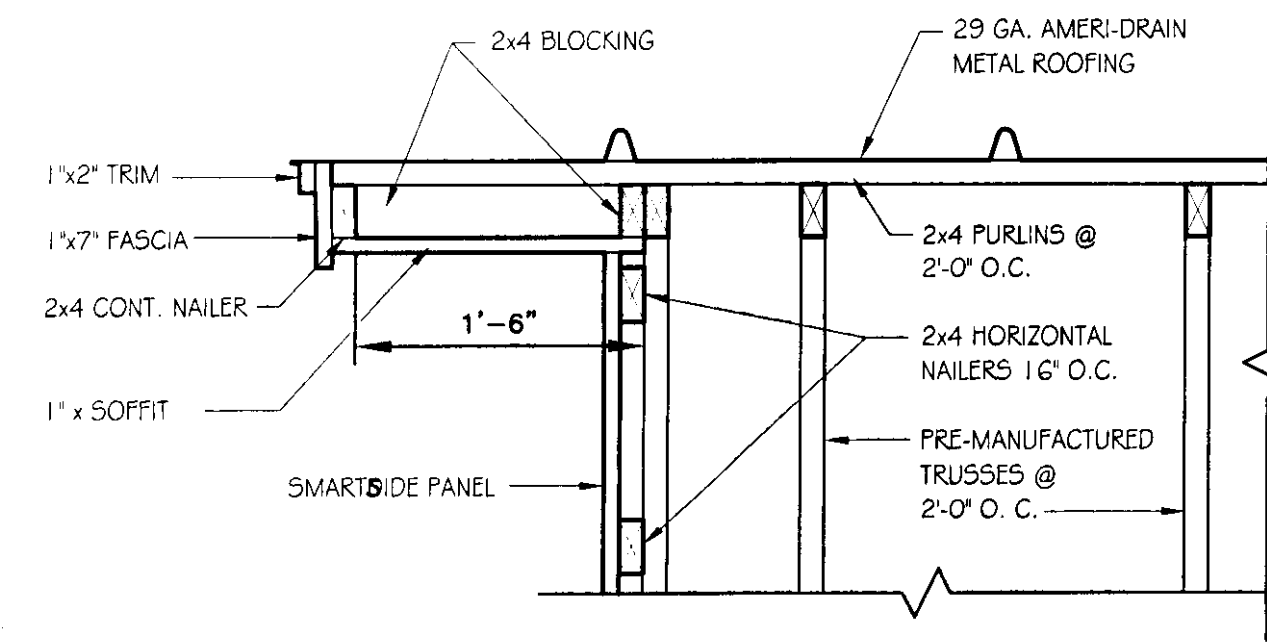


**COLUMN BASE DETAIL**  
SCALE: 1/2" = 1'-0"

**NOTE**  
POST BASE TO BE FABRICATED FROM 1/4" PLATE STEEL PRIMED & PAINTED (2 COATS) BLACK BEFORE INSTALLATION  
INSIDE LAG BOLTS TO BE IN C OF POST SO THEY WILL NOT INTERFERE WITH THE OVERHEAD DOOR TRACK.



**SECTION D-D**  
SCALE: 1/2" = 1'-0"



**SECTION B-B SOFFIT DETAIL**  
SCALE: 1" = 1'-0"

**GENERAL NOTES**

**TRUSS NOTES:**

TRUSS MANUFACTURER TO PROVIDE DEPT. OF STATE BUILDINGS ENGINEER A SET OF ENGINEERED & STAMPED DRAWINGS FOR APPROVAL PRIOR TO TRUSS MANUFACTURE (ENGINEER MUST BE LICENSED IN VERMONT).

TRUSS MANUFACTURER TO PROVIDE THE CONTRACTOR WITH ALL NECESSARY INSTRUCTIONS FOR PROPER TRUSS INSTALLATION, ANCHORAGE, BRACING, TRUSS DESIGN LOADS IN ACCORDANCE WITH THE 1987 B.O.C.A. FOR VERMONT.

**MINIMUM LOADS:**

- LIVE - PER 1987 B.O.C.A. FOR VERMONT (40 PSF MIN.)
- DEAD - AS CALCULATED FROM TRUSSES & ROOF MATERIAL
- 5 PSF ON BOTTOM CHORD
- WIND - 25 PSF
- DIAGONAL WIND BRACING PER TRUSS MANUFACTURE.

**LUMBER NOTES:**

FRAMING MEMBERS TO BE KILN DRIED CONSTRUCTION GRADE SPRUCE 545 19% MOISTURE CONTENT.  
PLATES & NAILED IN CONTACT WITH CONCRETE TO BE CCA 0.40 TREATED ALL FASTENERS TO BE GALVANIZED AND SHALL BE APPROPRIATELY SIZED.  
TRIM AND SOFFIT MATERIAL TO BE NATIVE ROUGH SAWN WHITE PINE, SPRUCE, EASTERN FIR OR RED PINE.

**SMARTSIDE PANEL NOTES:**

6d GALVANIZED NAILS FOR 1/32" PANELS PENETRATING STUDS 1 1/2" NAIL SPACING, 6" MAX. PERIMETER, 12" MAX FIELD, 3/8" MIN. FROM EDGES. NAILS TO BE SET FLUSH. DO NOT COUNTERSINK NAILS INTO PANEL. MINIMUM 3/8" GAP REQUIRED AT HORIZONTAL JOINTS OF PANEL SIDING. SMARTSIDE PANEL SIDING MUST NOT CONTACT CONCRETE. 1/2" CLEARANCE MIN. SMARTSIDE PANEL SIDING MUST NOT CONTACT GROUND. 6" CLEARANCE MIN. PAINT ALL PANEL SURFACES INCLUDING BOTTOM EDGES. ADDITIONAL SMARTSIDE PANEL INSTALLATION INFO CAN BE FOUND AT WWW.SMARTSIDEONLINE.COM OR CALL 800-648-6893

**FINISH NOTES:**

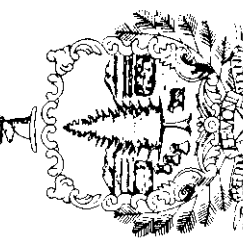
ROOFING COLOR: IVY GREEN (BY AMERI-DRAIN)  
APPLY PAINT AS SOON AS POSSIBLE.  
PAINT TO BE OLYMPIC ACRYLIC LATEX SATIN FINISH.  
COLOR TO BE DETERMINED BY ENGINEER.

**CONCRETE NOTES:**

CONCRETE STRENGTH TO BE 3500 PSI. PER A.O.T. STANDARD.  
CONCRETE FINISH TO BE FLOATED.  
CONCRETE TO BE CLASS "B" PER AOT STANDARD SPECIFICATIONS TABLE 501.03A WITH 5% ± 1% AIR ENTRAINMENT, AND 2"-4" SLUMP.  
RE-BAR TO BE CONTINUOUS THROUGH CONSTRUCTION JOINTS.  
CONTRACTOR TO LEAVE NO METAL WITHIN 1" OF SURFACE. USE 1" DEEP PLASTIC CONES AT ALL TIES AND PLUG ALL TIE HOLES WITH AN APPROVED NON-SHRINK GROUT.  
ALL RE-BAR TO BE GRADE 60 WITH 3" CLEARANCE ON ALL SIDES UNLESS NOTED OTHERWISE.  
RE-BAR TO BE STORED ON BLOCKING 4" MINIMUM ABOVE GROUND.  
CONCRETE SUPPLIER TO PROVIDE TEST CYLINDERS FOR CONCRETE TESTING.  
ALL CONCRETE TESTING TO BE DONE BY OWNER. CONTRACTOR IS RESPONSIBLE FOR SCHEDULING.  
CONCRETE CURING SHALL FOLLOW IMMEDIATELY AFTER FORM REMOVAL PER A.O.T. STANDARD 501.17A. WATER CURING WILL BE REQUIRED, UNLESS ALTERNATE MEANS OF CURING IS APPROVED, IN WRITING, BY THE PROJECT ENGINEER.



**STATE OF VERMONT**  
Department of Buildings  
and General Services  
Agency of Administration  
Montpelier, Vermont



VERMONT

AGENCY OF TRANSPORTATION  
NEW HAVEN DISTRICT GARAGE  
NEW 26' x 60' STORAGE SHED  
DETAILS

NEW HAVEN

REVISIONS

SCALE:	AS NOTED
DATE:	MAY 2005
DRAWN BY:	S.K. Janawicz
APPR. BY:	R. BARRY

AGENCY OF TRANSPORTATION  
NEW 26' x 60'  
STORAGE SHED  
DETAILS