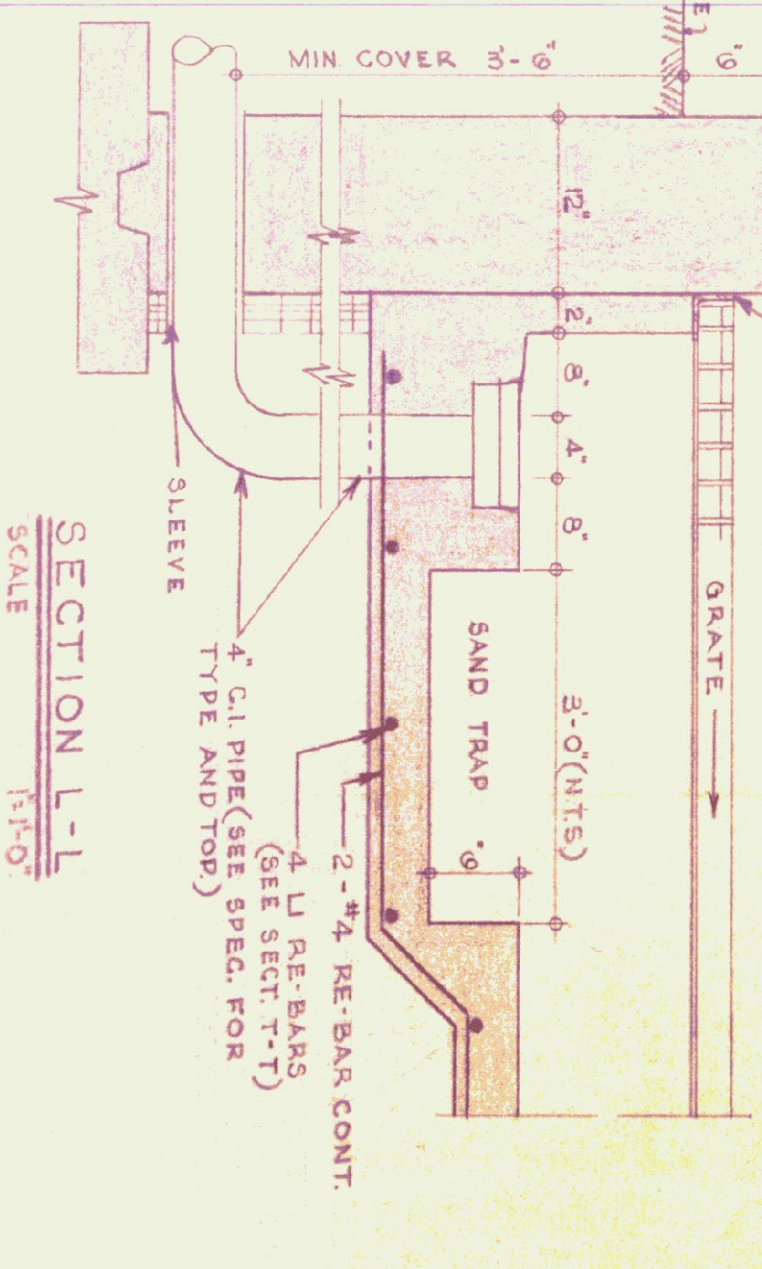
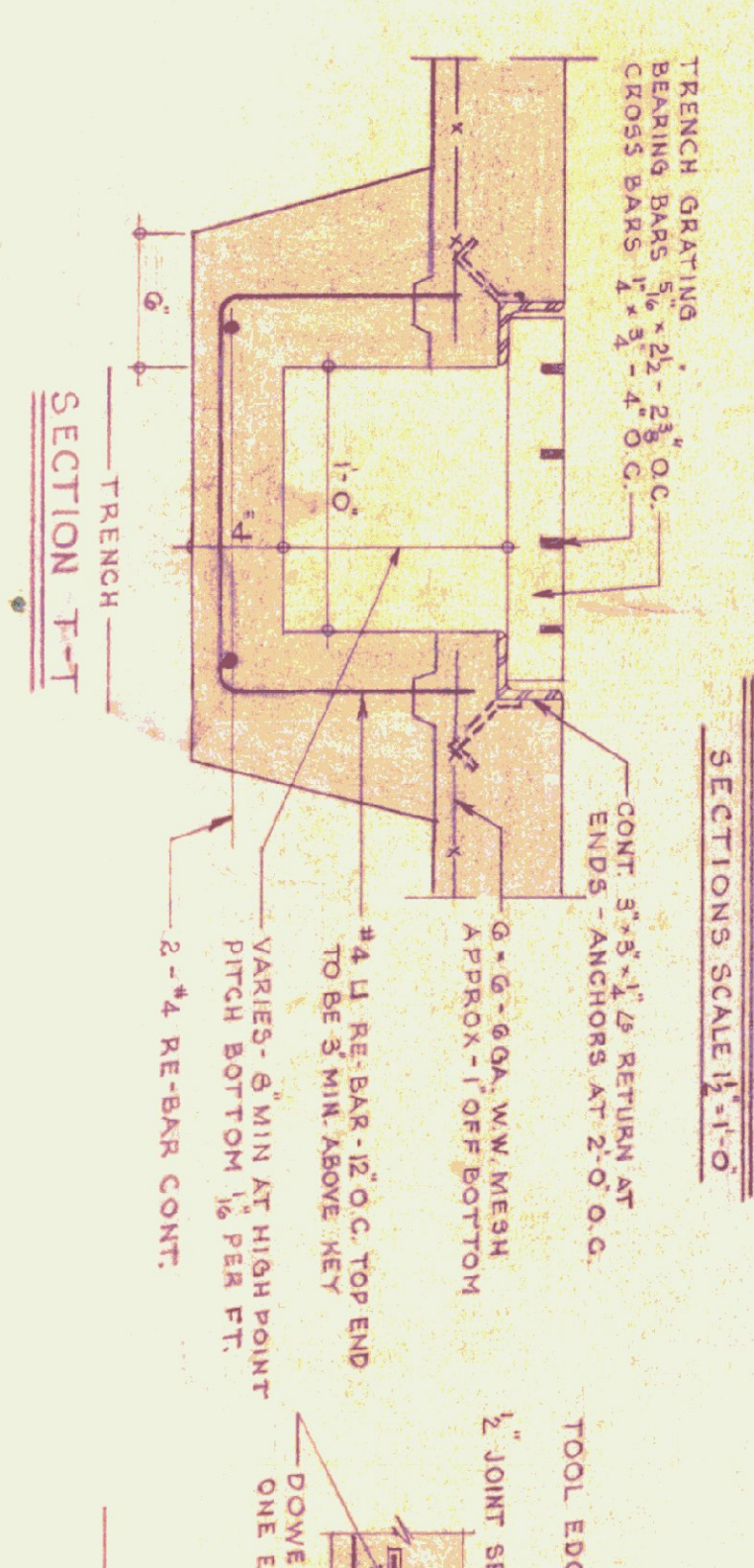
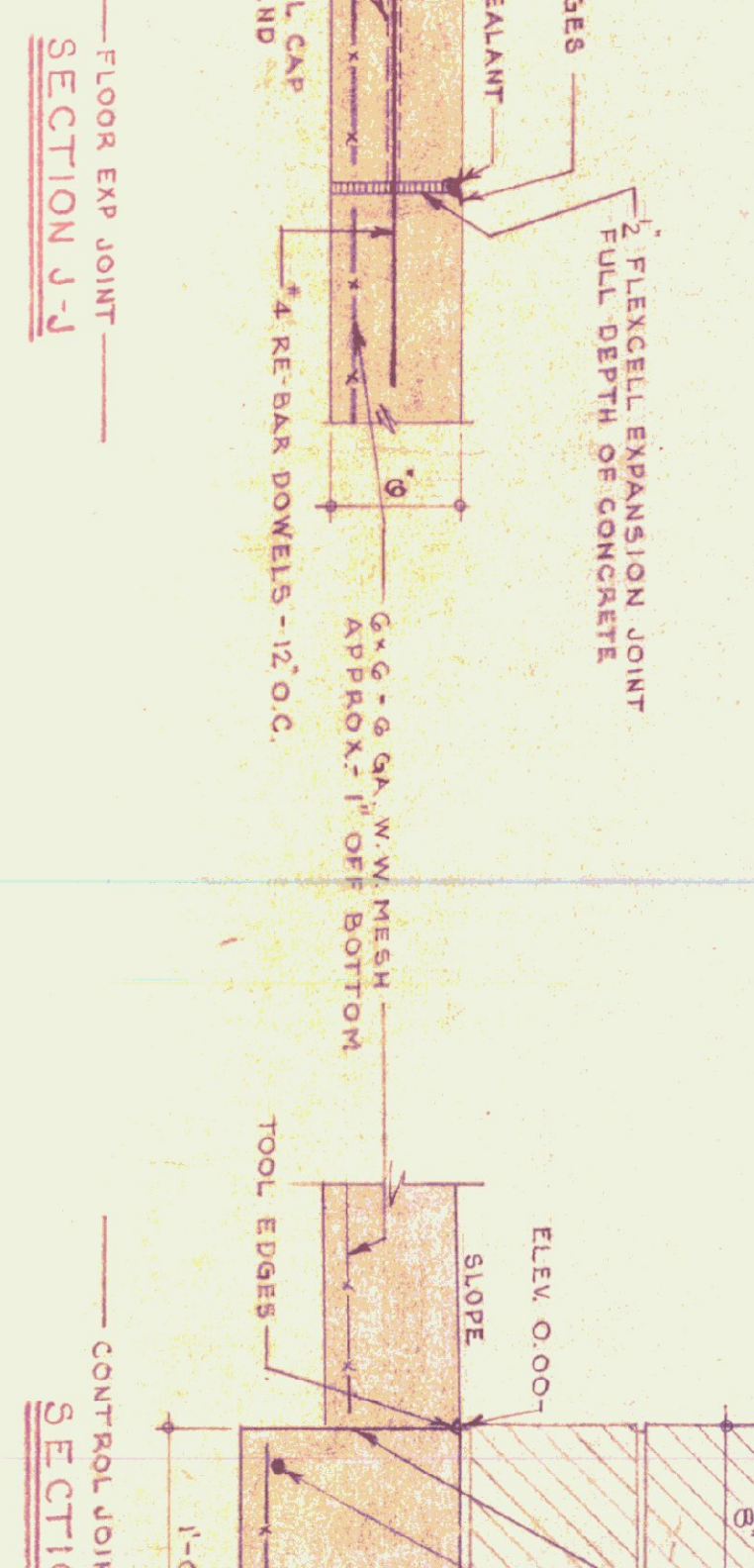
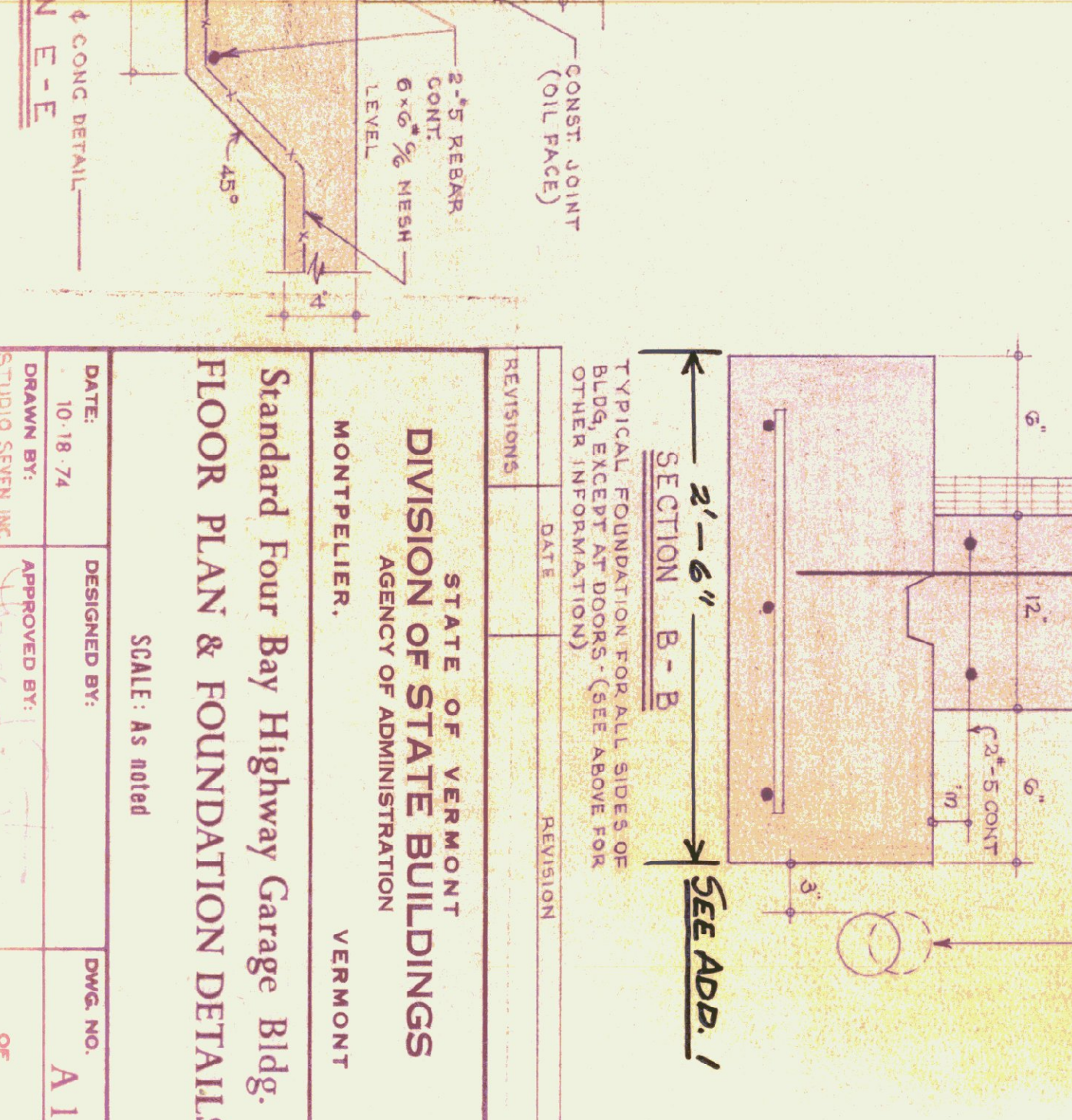
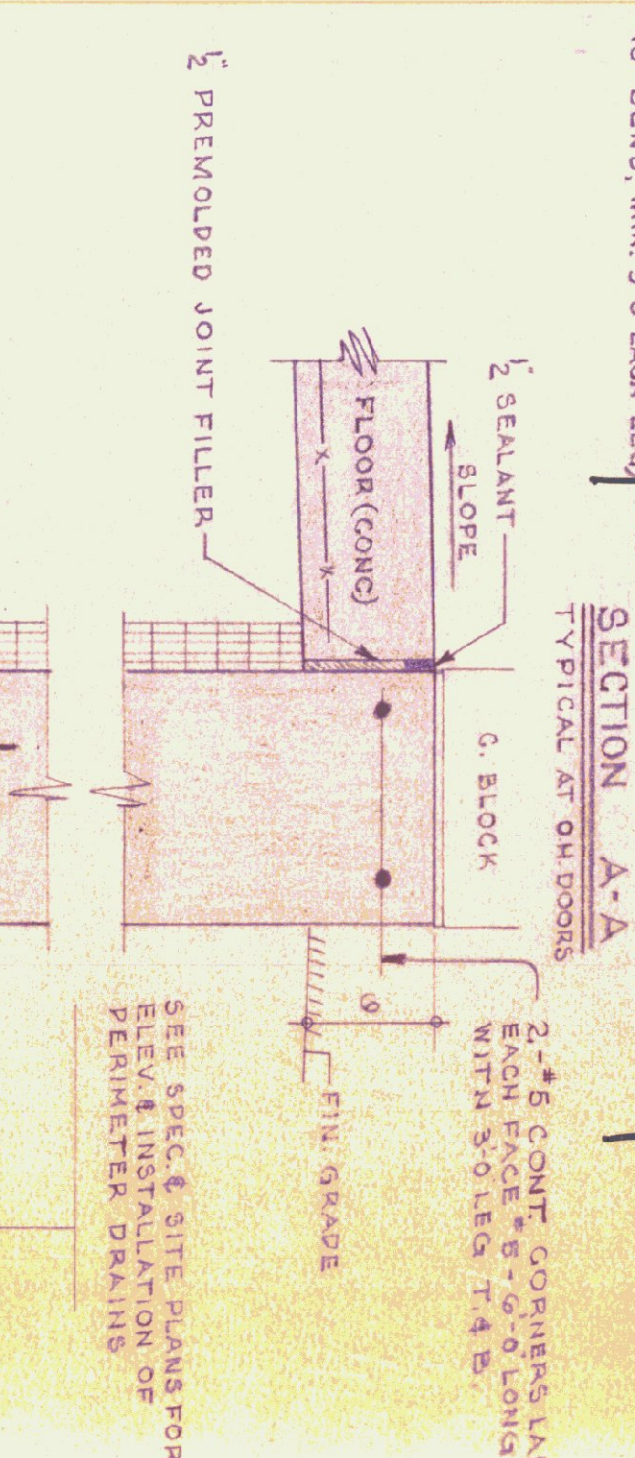
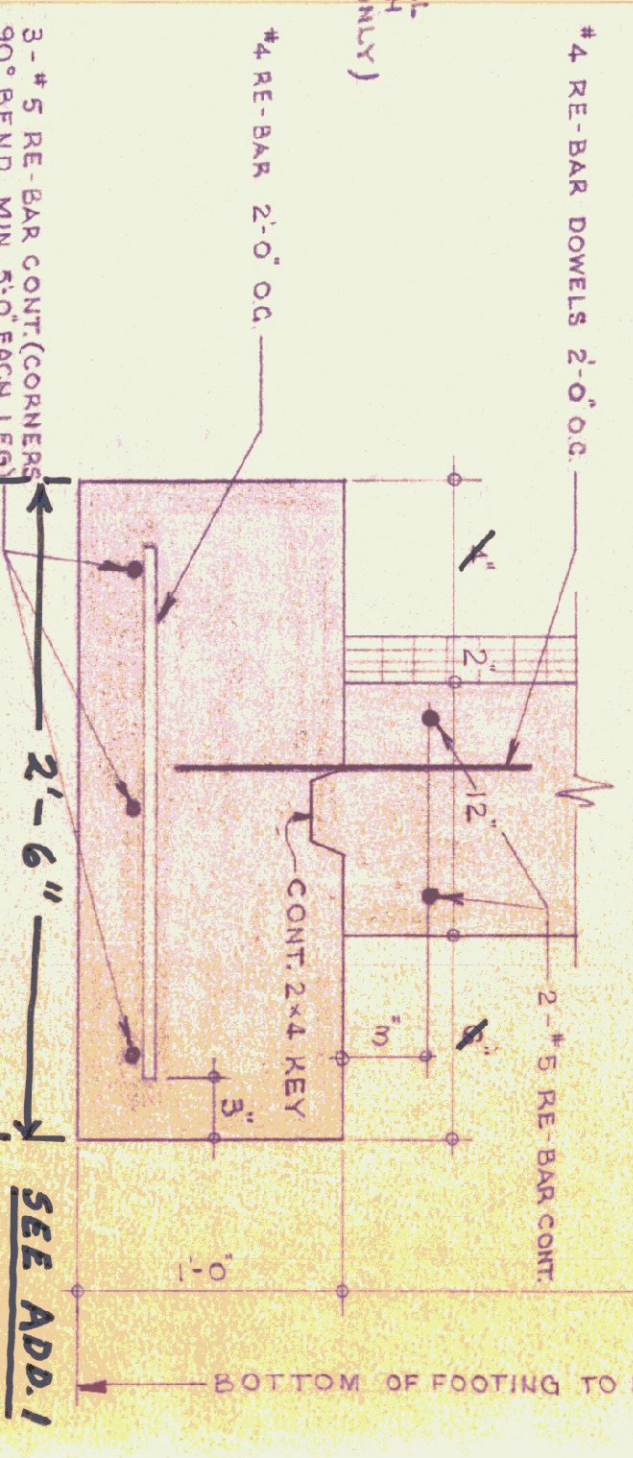
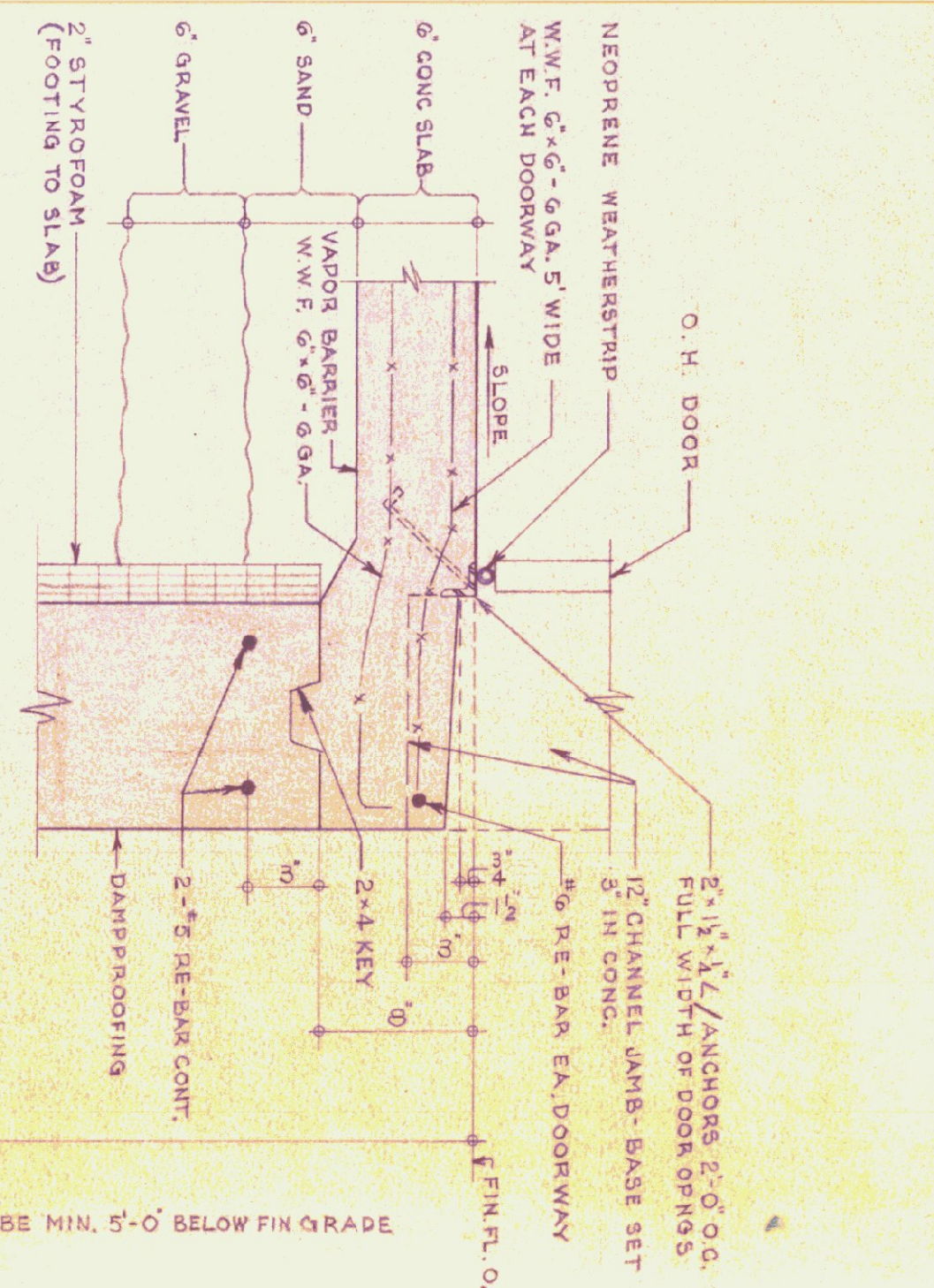
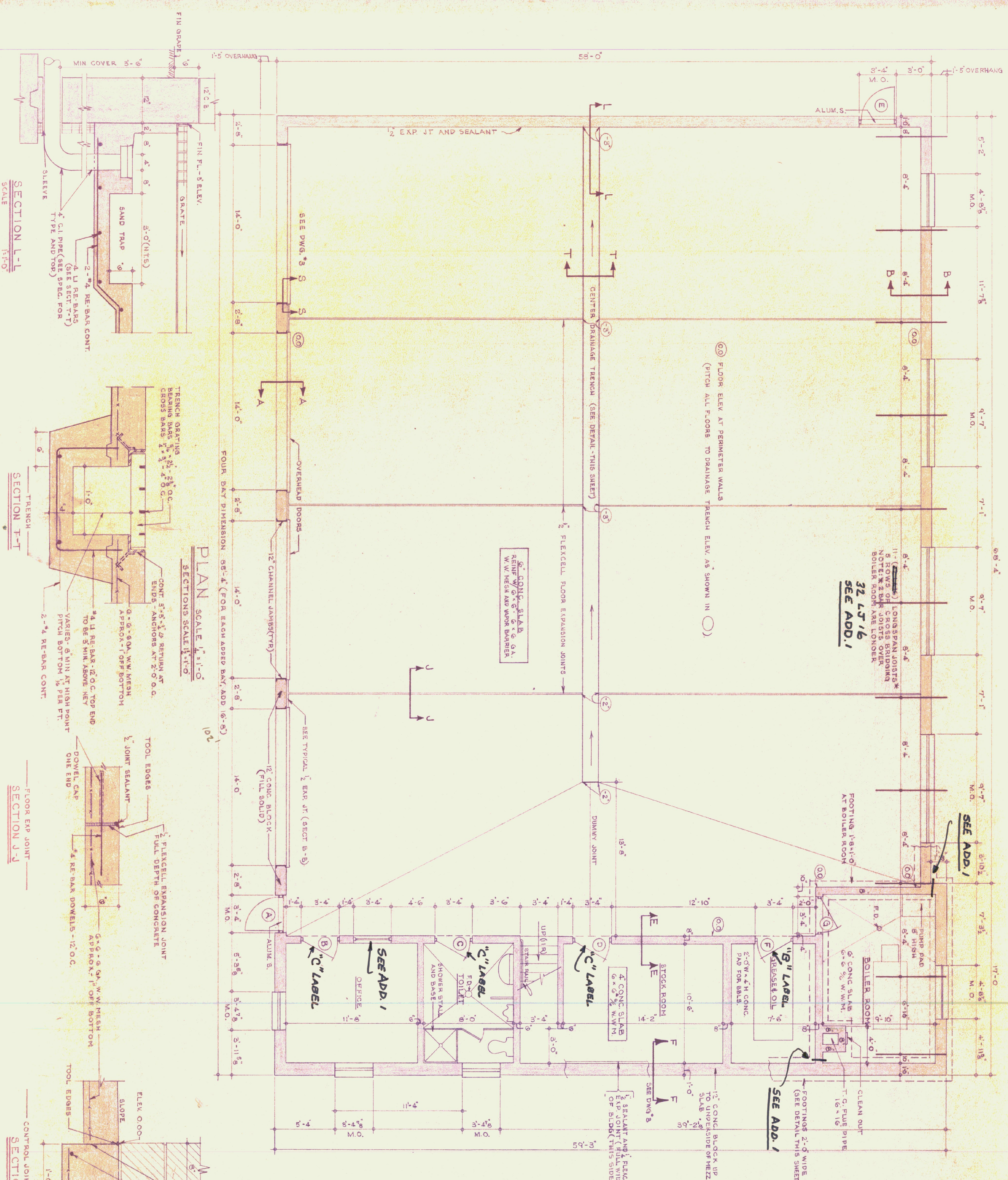


GENERAL NOTES

ALL CONCRETE SHALL BE 3000 PSI AT 28 DAYS/MAX. SLUMP OF 4".
 ALL CONSTRUCTION JOINTS SHALL BE SUBMITTED FOR APPROVAL BY THE ARCHITECT.
 ALL CONCRETE TO BE CURED, 3/4 TO BE COVERED WITH BURLAP/RAFT.
 EXPANSION JOINTS TO HAVE TOoled EDGES.



REVISIONS	DATE	REVISION

TYPICAL FOUNDATION FOR ALL SIDES OF BLDG. EXCEPT AT DOORS. (SEE ABOVE FOR OTHER INFORMATION)

STATE OF VERMONT
 DIVISION OF STATE BUILDINGS
 AGENCY OF ADMINISTRATION
 MONTPELIER, VERMONT

Standard Four Bay Highway Garage Bldg.
 FLOOR PLAN & FOUNDATION DETAILS

SCALE: As noted

DATE: 10/18/74	DESIGNED BY:	DWG. NO. A1
DRAWN BY: STUDIO SEVEN INC.	APPROVED BY:	OF