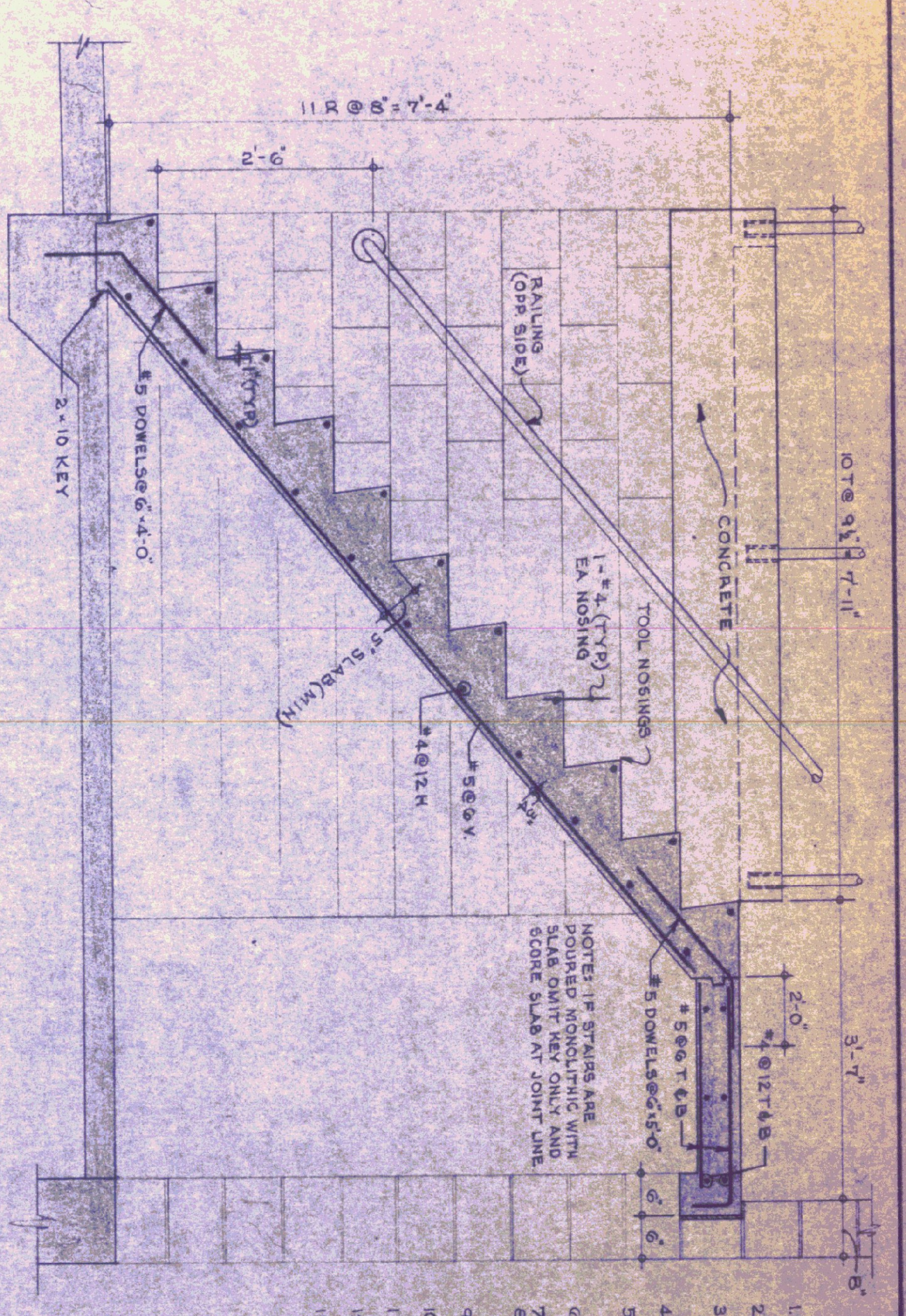
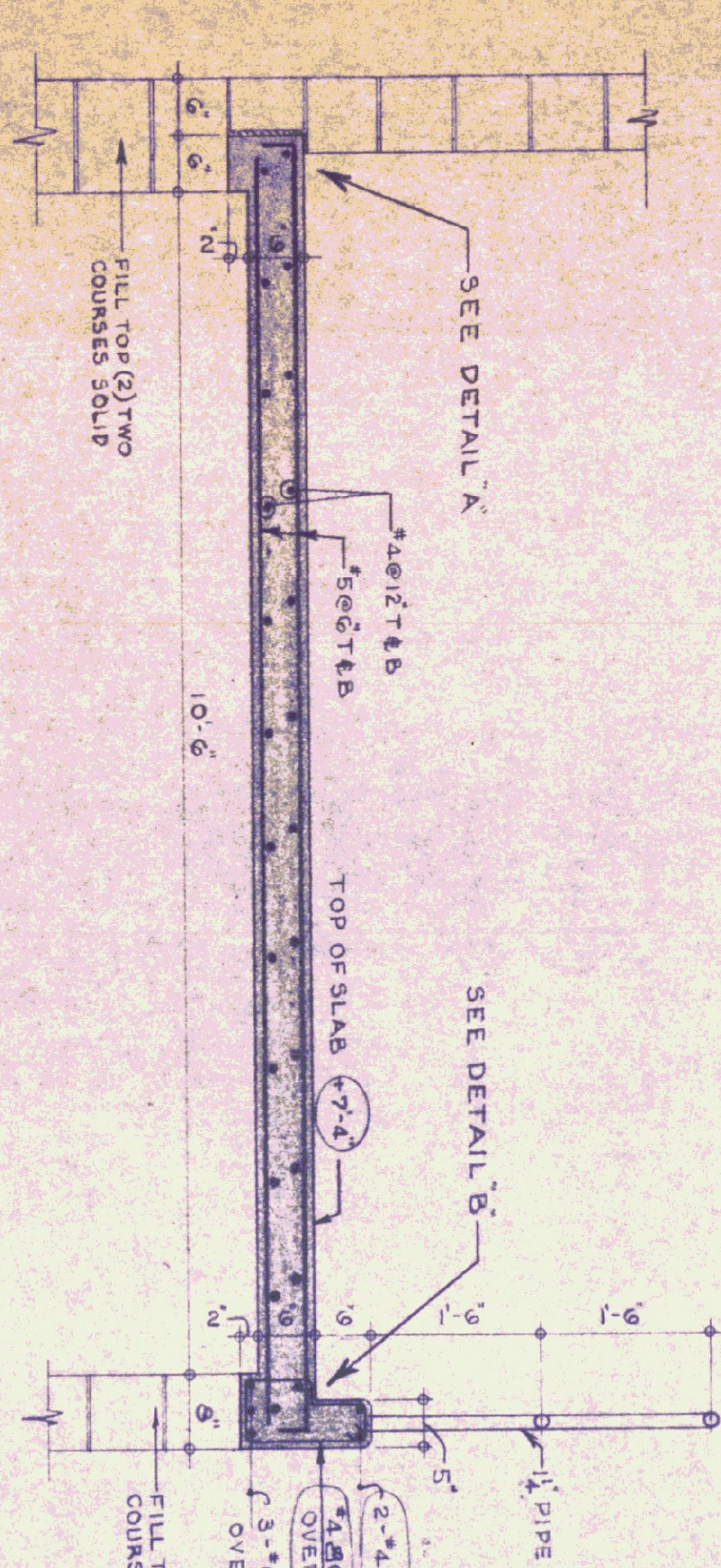


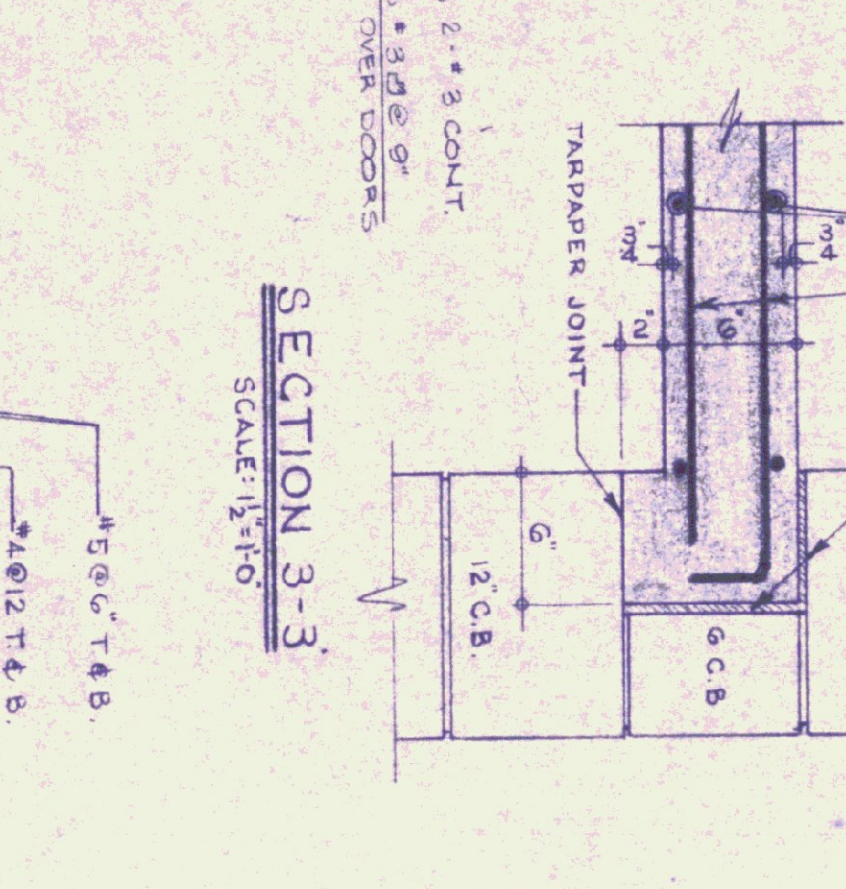
PLAN OF CONCRETE SLAB AT MEZZANINE  
SCALE: 1/4"=1'-0"



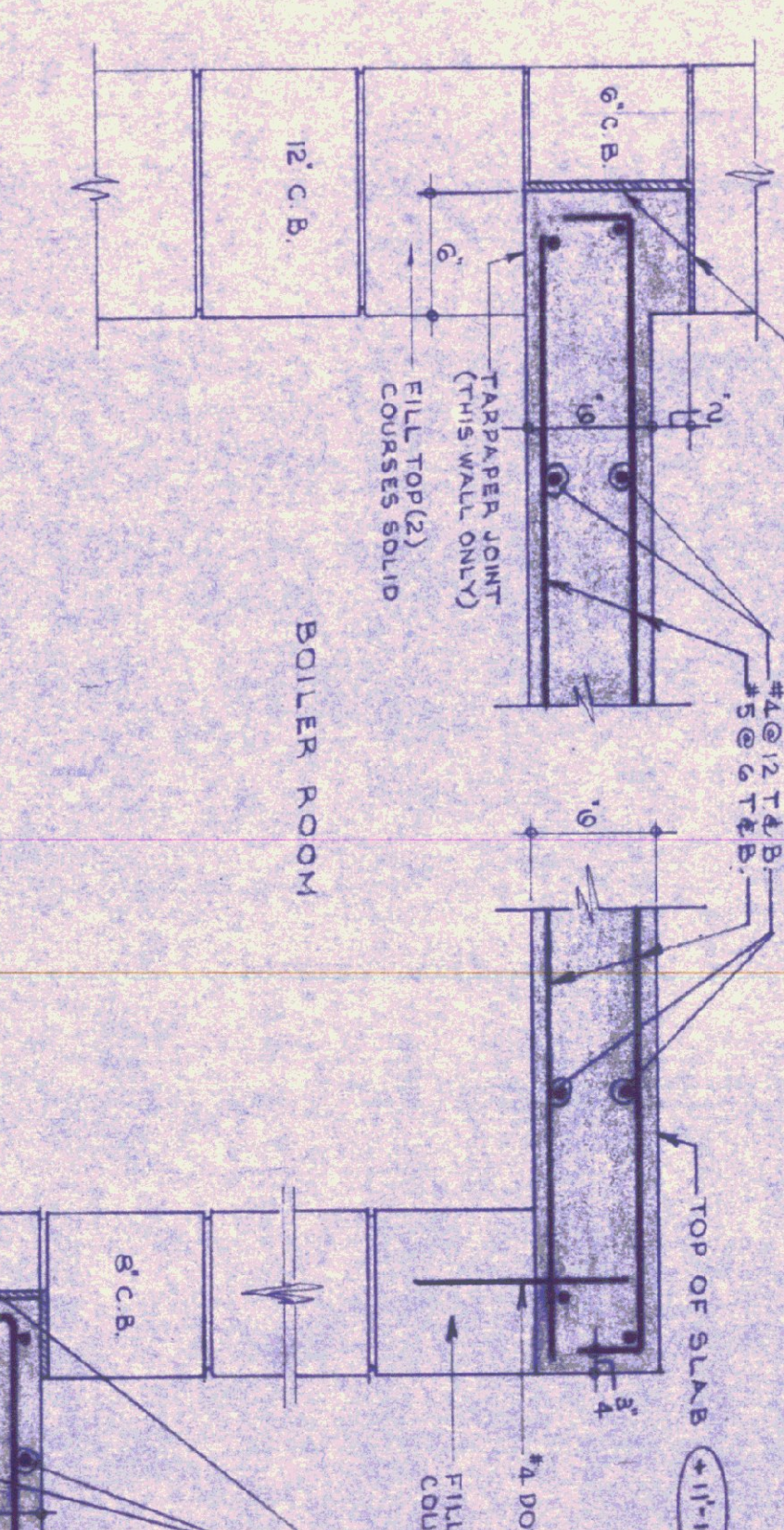
SECTION 2-2  
SCALE: 1/4"=1'-0"



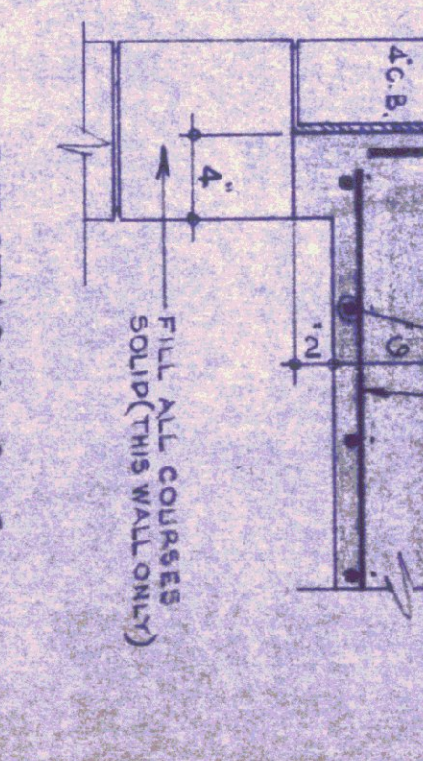
SECTION 1-1  
SCALE: 1/4"=1'-0"



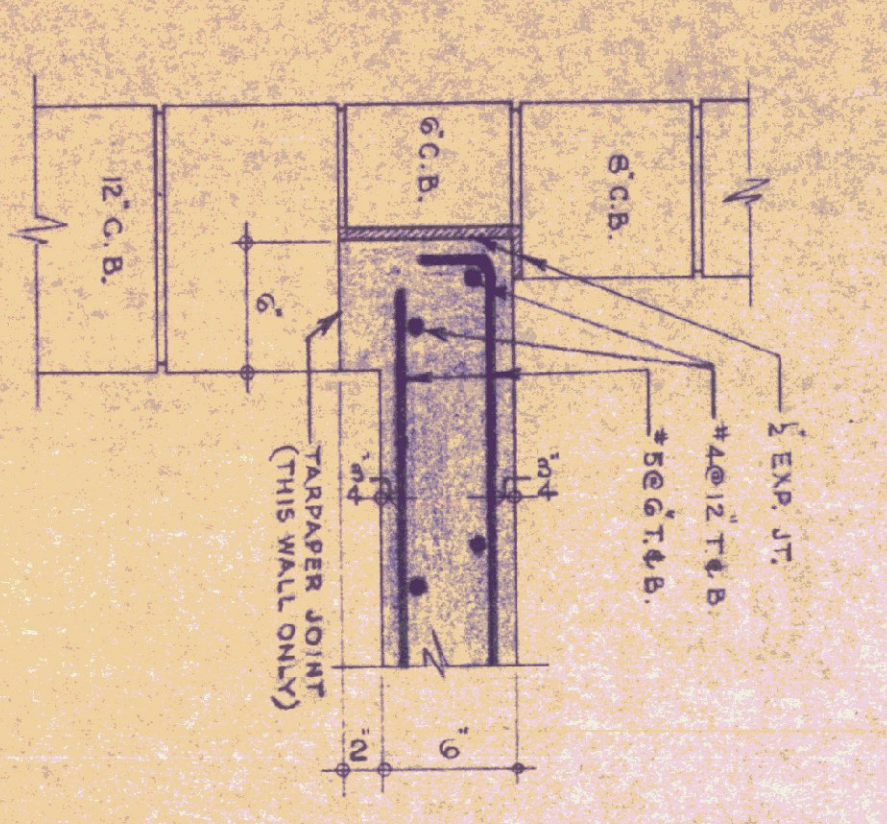
SECTION 3-3  
SCALE: 1/4"=1'-0"



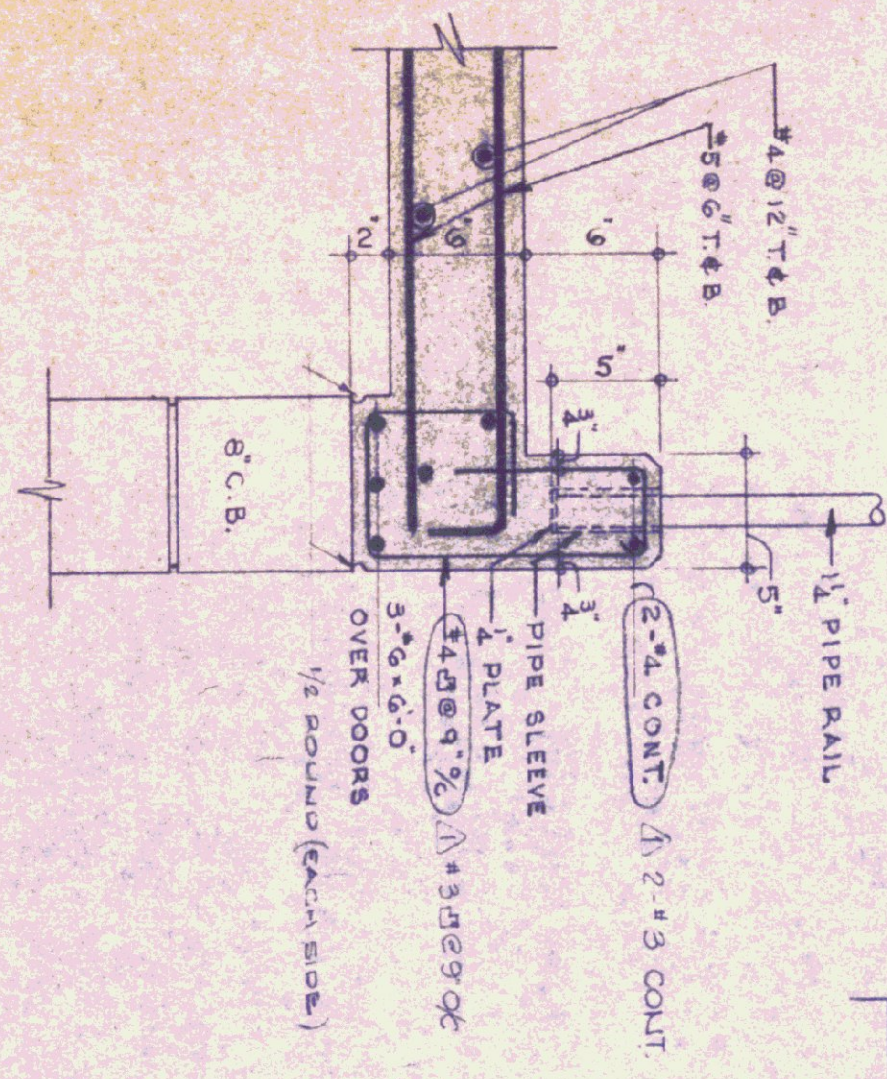
SECTION 5-5  
SCALE: 1/4"=1'-0"



SECTION 6-6  
SCALE: 1/4"=1'-0"



DETAIL A  
SCALE: 1/4"=1'-0"



DETAIL B  
SCALE: 1/4"=1'-0"

GENERAL NOTES

1. CONCRETE - 3000 PSI @ 28 DAYS, MAXIMUM SLUMP 4".
2. ALL EXPOSED CONCRETE TO BE RUBBED AND CURED.
3. ALL EXPOSED SLABS & CONCRETE STEPS TO BE CURED WITH MOISTURE CURING COMPOUND THROUGHOUT OF JOB UNTIL ACCEPTANCE.
4. EXPOSED CURB CORNERS TO BE CHAMFERED.
5. ALL SLAB SHOWING TO BE IN PLACE MIN(3) DAYS @ 70% F. RE SHORE AFTER STRIPPING.
6. REINFORCING STEEL TO BE LAPED 40 DIA MIN DRIPPING.
7. REINFORCING STEEL TO BE PLACED ON SLAB B.O. STEPS & HI-CHAIRS LEGS TO BE PVC PLASTIC.
8. ELECTRICAL CONDUIT TO BE LAYED IN ONE SECTION OF RAILINGS, EACH SIDE OF STAIRS TO BE REMOVABLE.
9. PIPE RAILING POSTS TO BE LEADED INTO STEELERS.
10. ALL CONCRETE SLABS SHALL BE CURED WITH MOISTURE CURING COMPOUND SHALL HAVE INTERNAL BRASSIVE HARDENER.

NO.	BY	DATE	REVISION
1	TJS	8/21/78	QUICK DETAILS
2	RCJ	8/11/78	MEZZANINE CHANGES / BOILER ROOM

STATE OF VERMONT  
 DIVISION OF STATE BUILDINGS  
 AGENCY OF ADMINISTRATION  
 MONTPELIER, VERMONT  
 Standard Highway Garage Building  
 DETAILS OF MEZZANINE, BOILER  
 ROOM SLABS AND CONC. STAIRWAY  
 SCALE: AS NOTED  
 DESIGNED BY: TJS  
 DRAWN BY: RCJ  
 APPROVED BY: [Signature]  
 DATE: 10/18/78  
 DWG. NO. A4  
 SHEET 4 OF 4