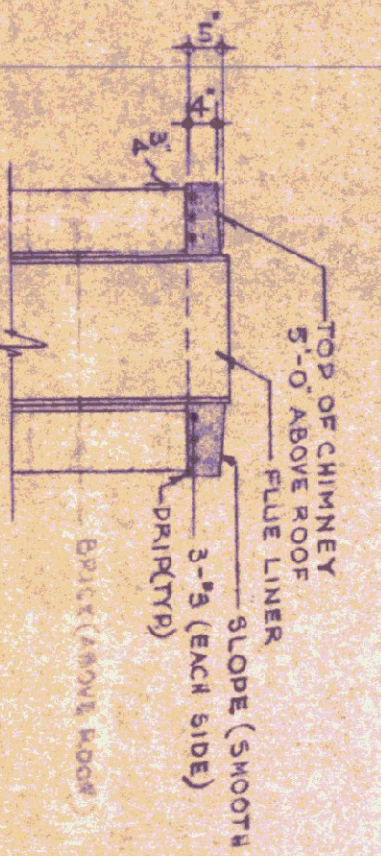
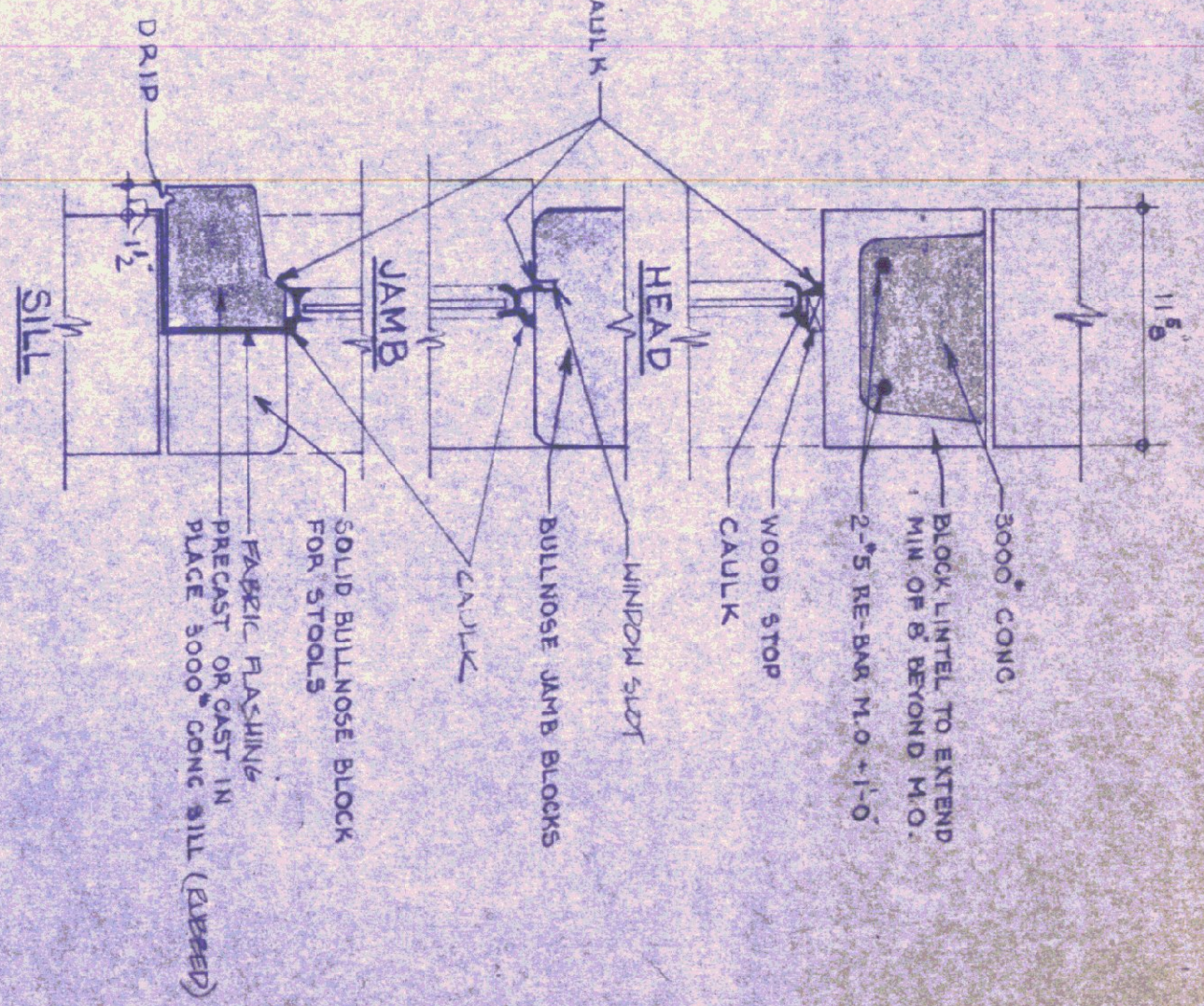
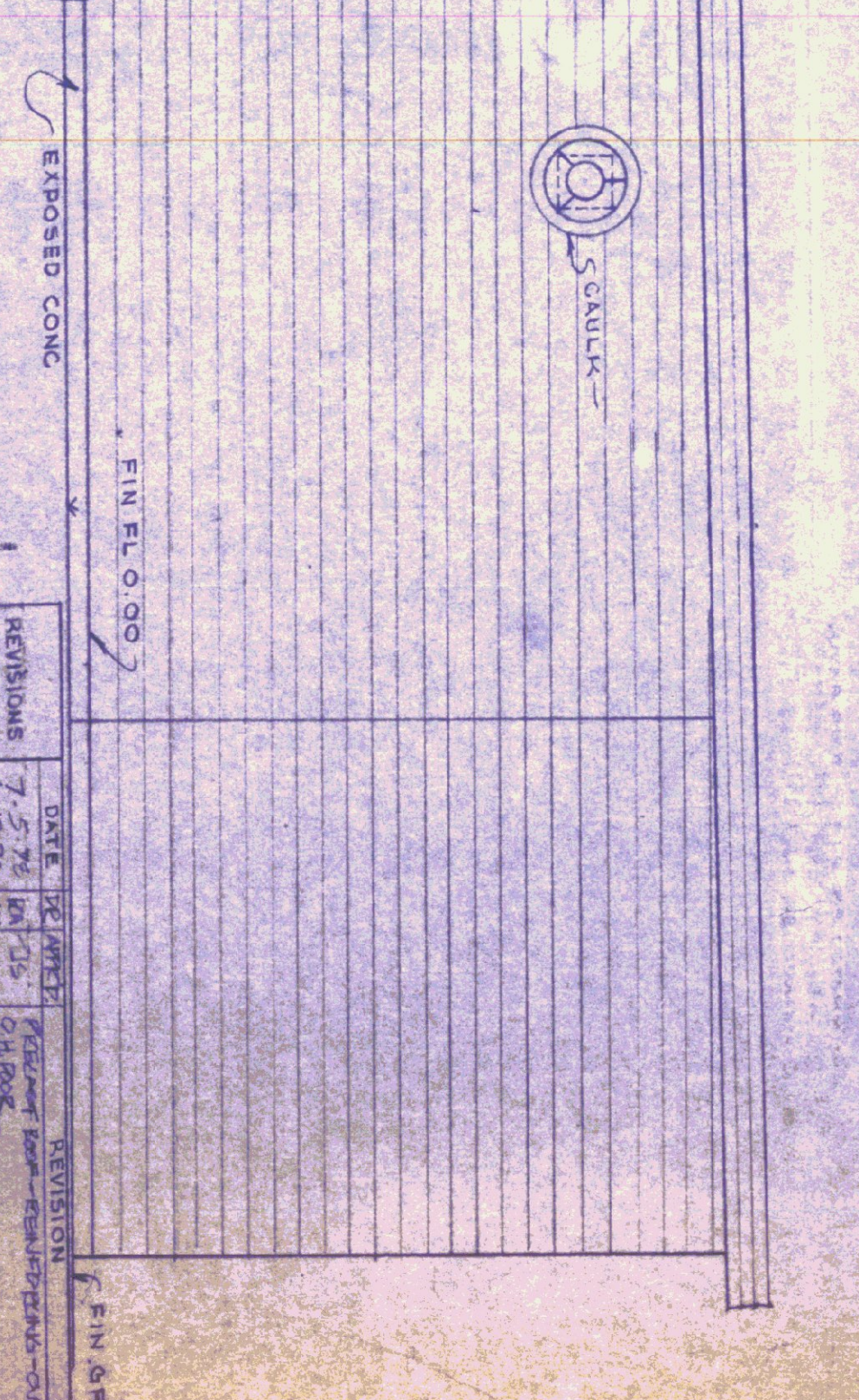
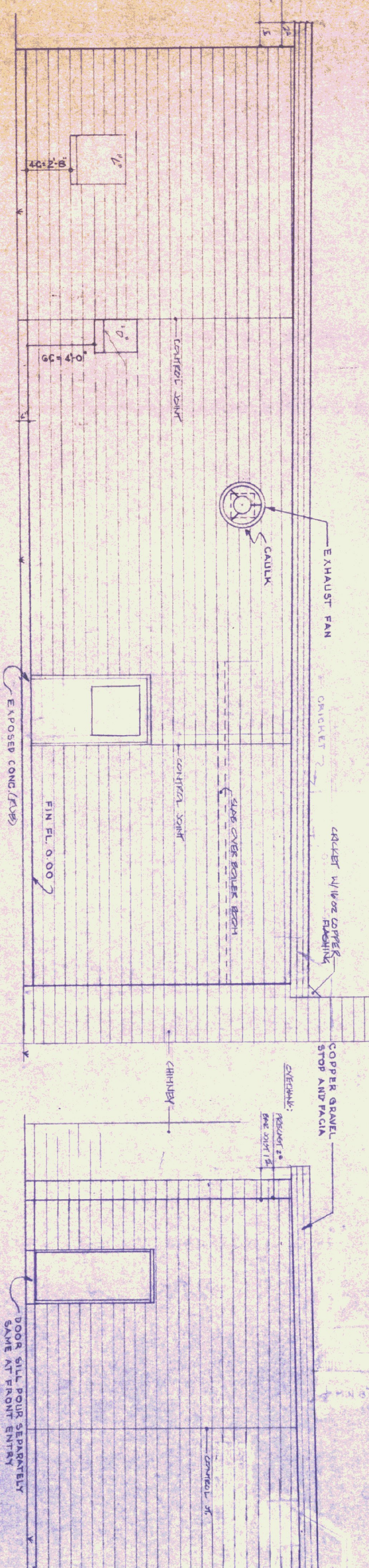
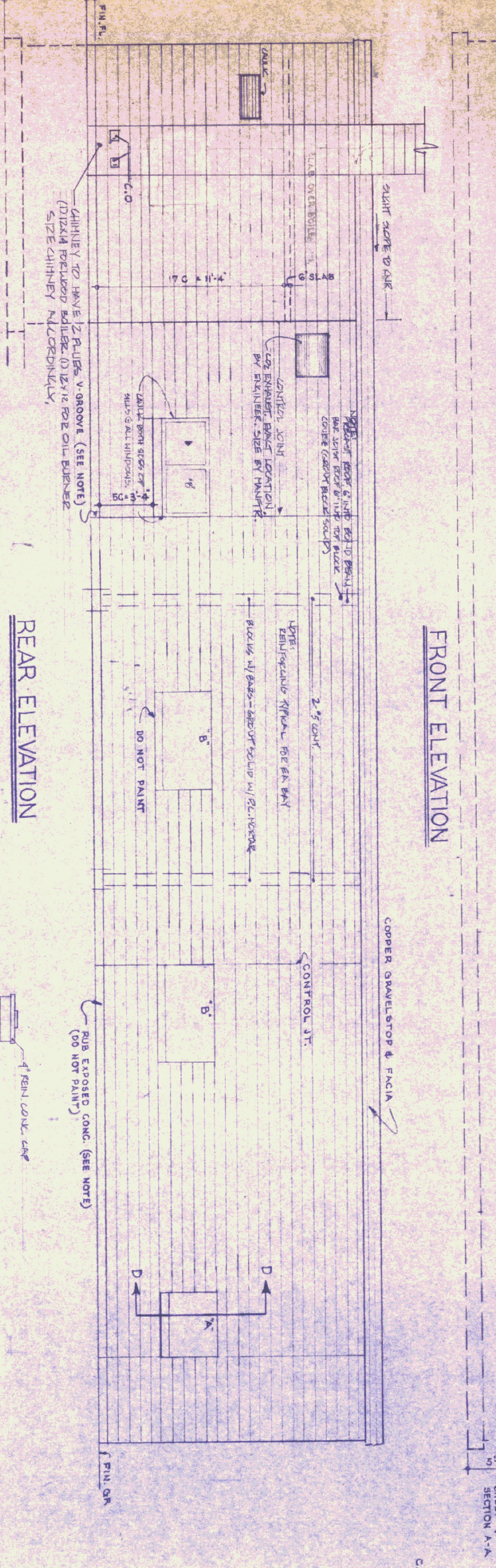
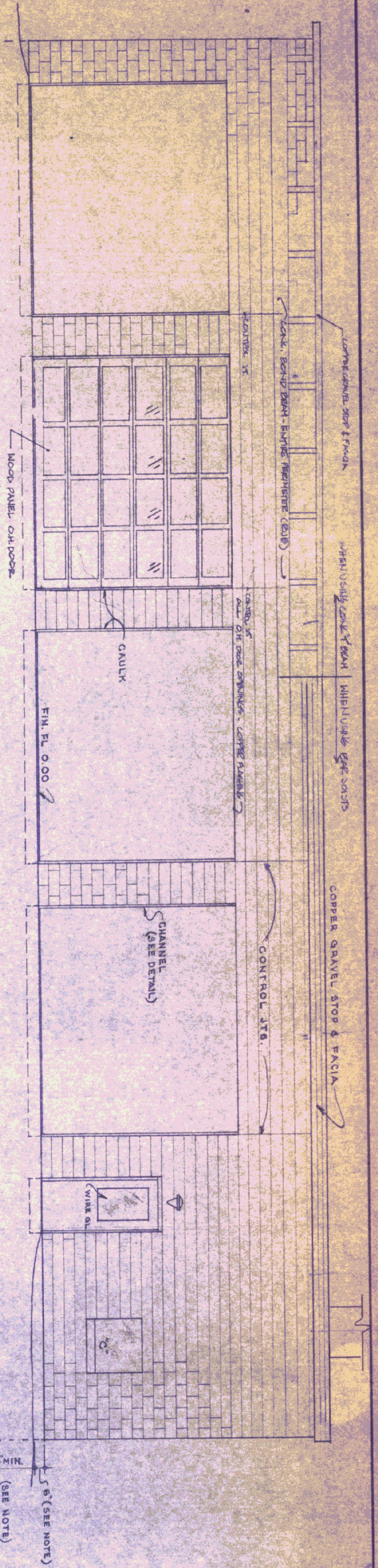


GENERAL NOTES

FINISH GRADE SHALL BE MIN. OF 6" BELOW FINISH FLOOR - AT BLDG ON RIGHT LEFT & REAR ELEVATIONS TO BE SLOPED AWAY FROM BLDG. AND GRADED IN A MANNER LIKE TO PROHIBIT WATER POCKETS OR EXCESSIVE WASHING. ALL EXPOSED CONCRETE SHALL BE RUBBED TO A BELOW FINISH GRADE. CONCRETE UNDER CONSTRUCTION JOINTS SHALL HAVE A V-GROOVE TO 2" BELOW FIN. GRADE. BUILD CONTROL JOINTS AS PER SECTION 2.15 WOOD OR METAL. CAULK ALL JOINTS BETWEEN MASONRY AND WOOD OR METAL.



RIGHT END ELEVATION

LEFT END ELEVATION

CHIMNEY CAP DETAIL

ELEVATIONS SCALE: 1/4" = 1'-0"

DATE: 10-18-74	DESIGNED BY: [Signature]	DWG. NO. A2
APPROVED BY: [Signature]	SCALE: As Noted	K-5-M
STATE OF VERMONT DIVISION OF STATE BUILDINGS AGENCY OF ADMINISTRATION MONTPELLIER, VERMONT Standard Highway Garage Bldg ELEVATIONS		
REVISIONS:	DATE:	REVISION:
7-5-74	6/17/74	REVISED FOR REVISIONS - CORRECTIONS
6-17-74	6/17/74	REVISED FOR REVISIONS - CORRECTIONS