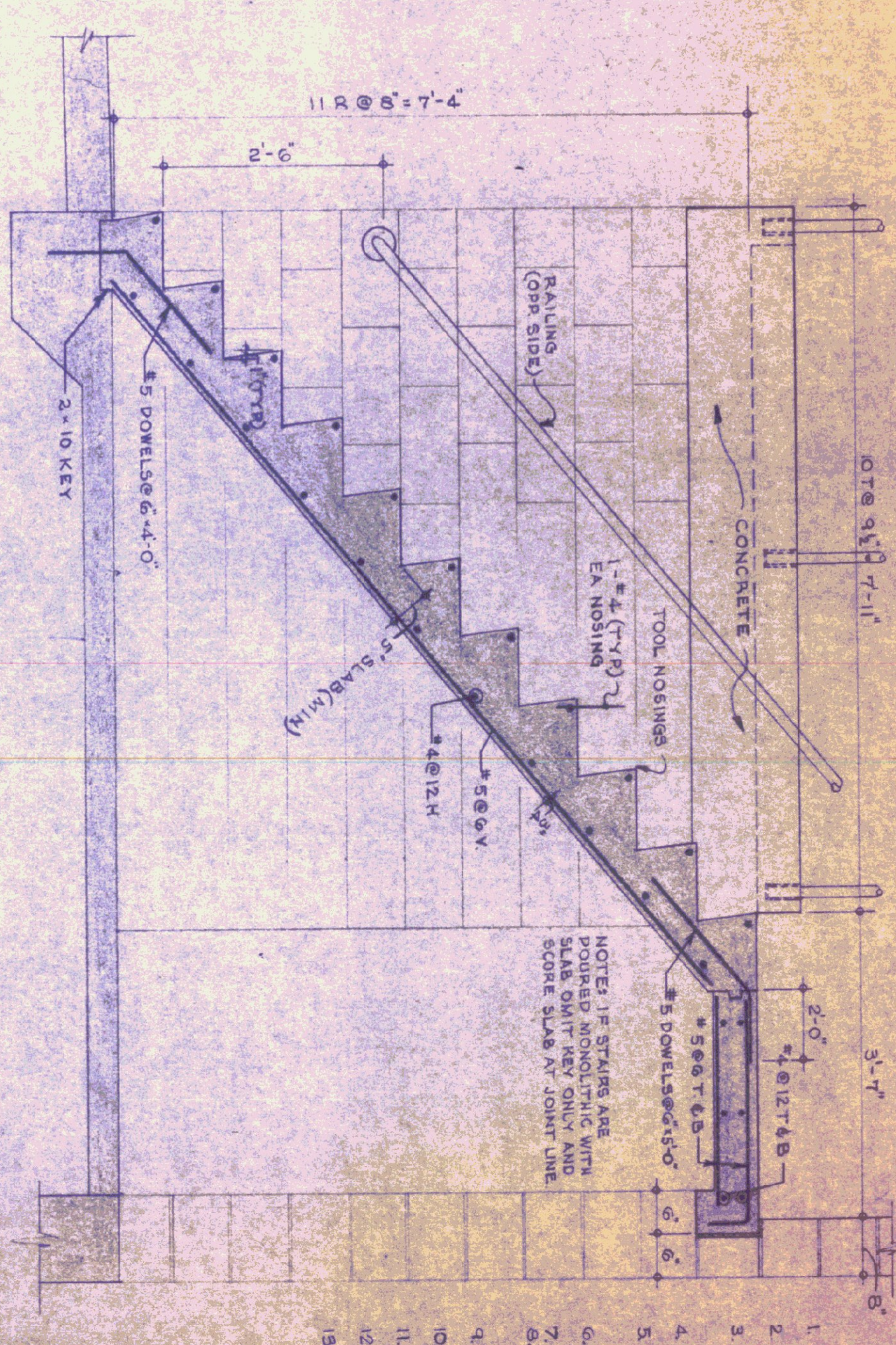
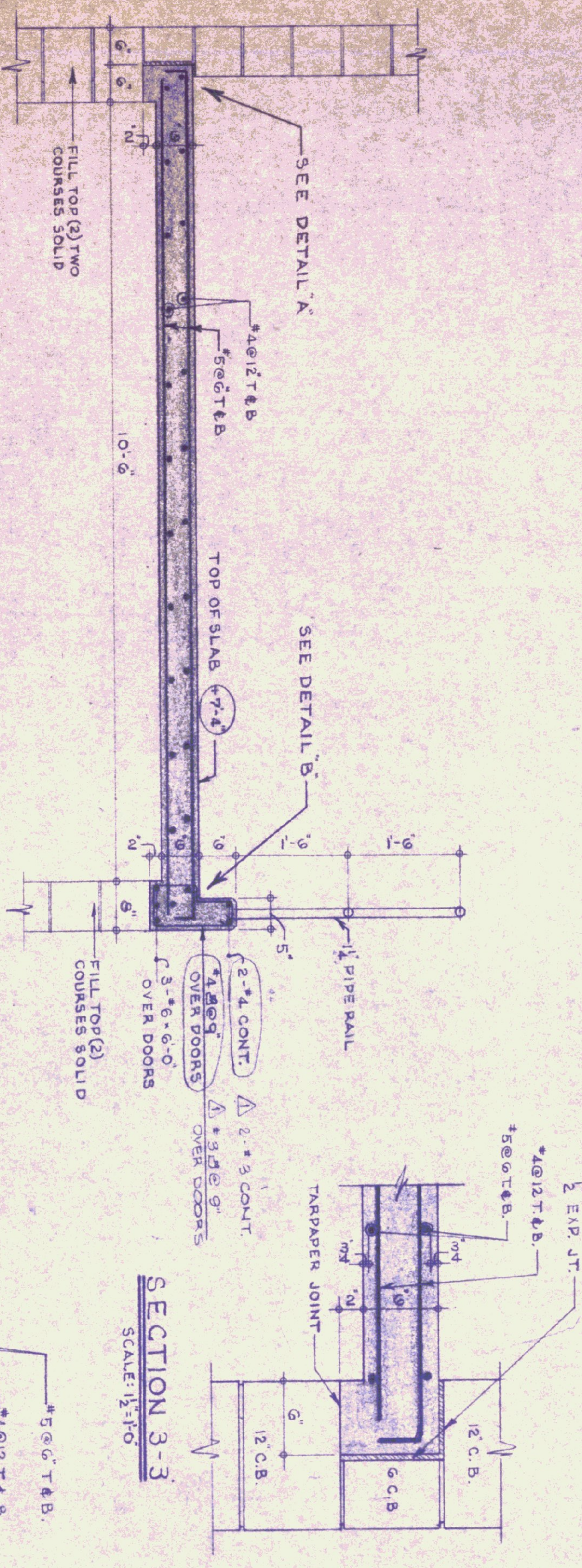


PLAN OF CONCRETE SLAB AT MEZZANINE
SCALE: 1/4"=1'-0"

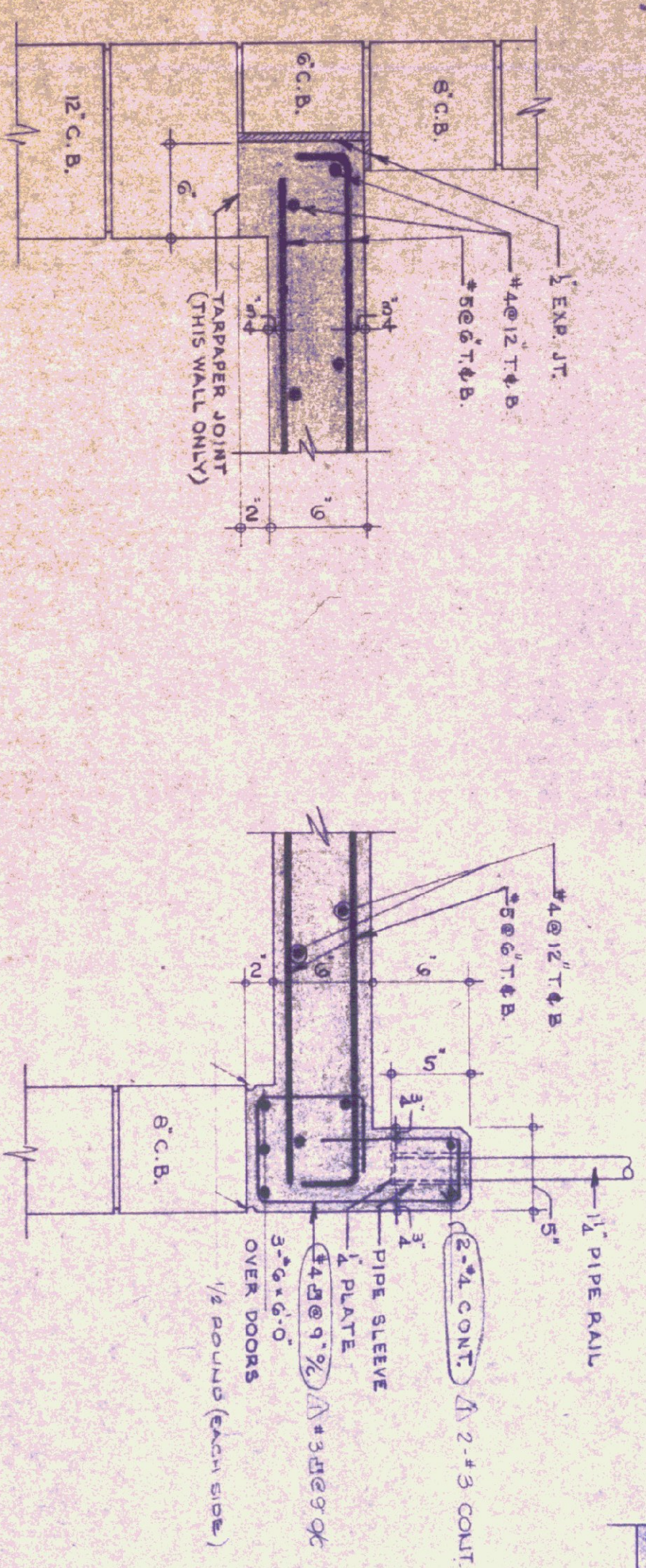


SECTION 2-2
SCALE: 1/4"=1'-0"



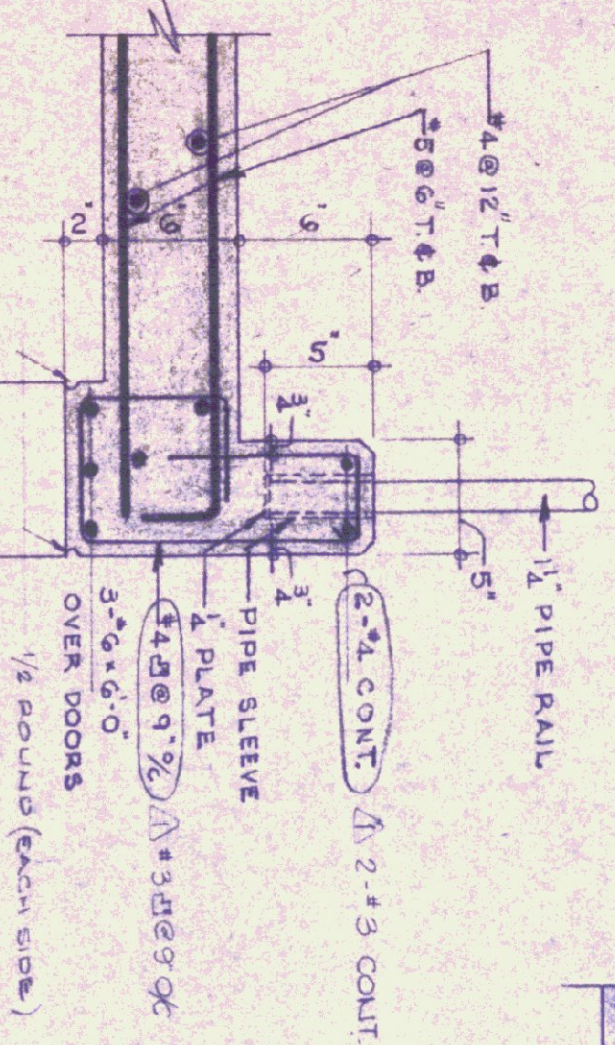
SECTION 1-1
SCALE: 1/4"=1'-0"

SECTION 3-3
SCALE: 1/4"=1'-0"

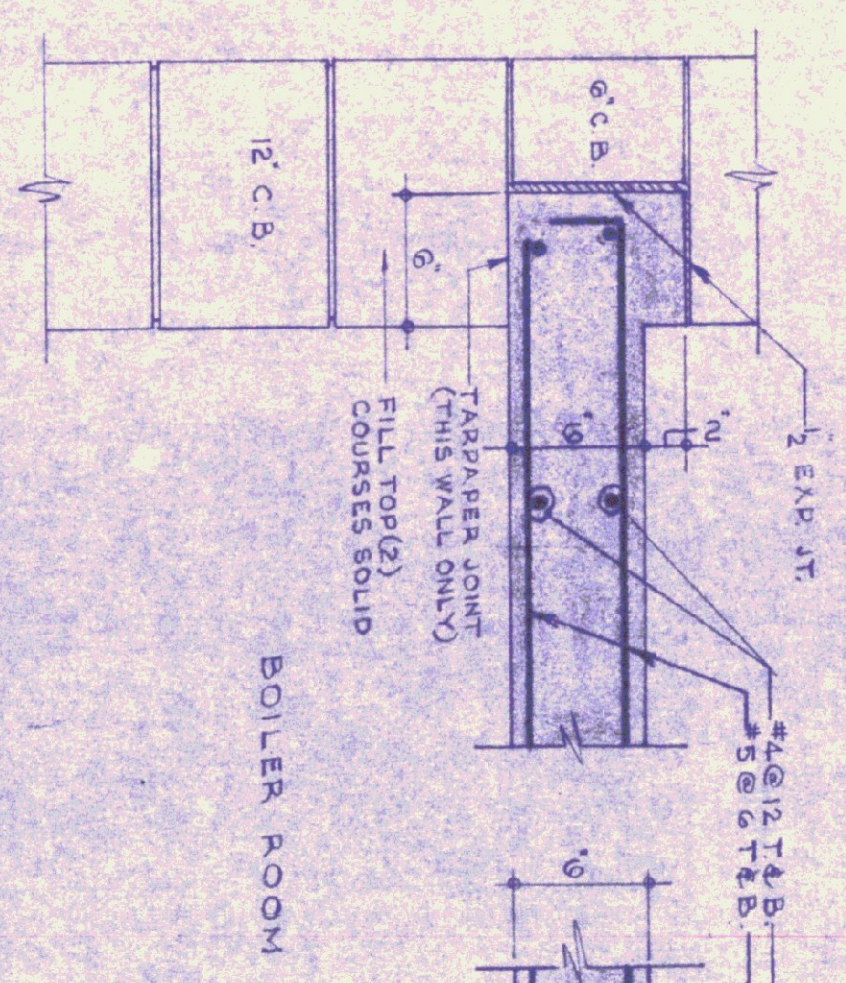
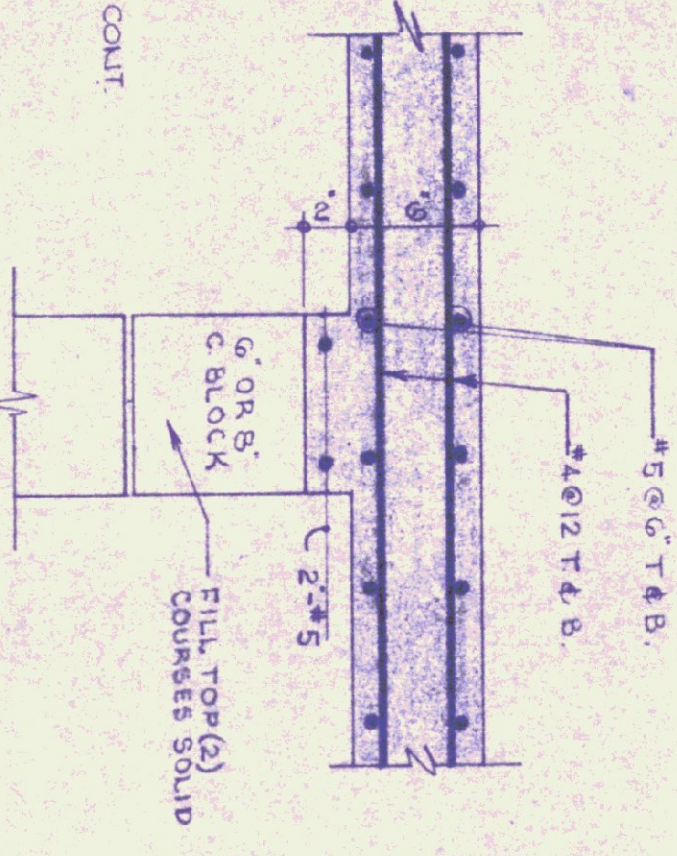


DETAIL "A"
SCALE: 1/4"=1'-0"

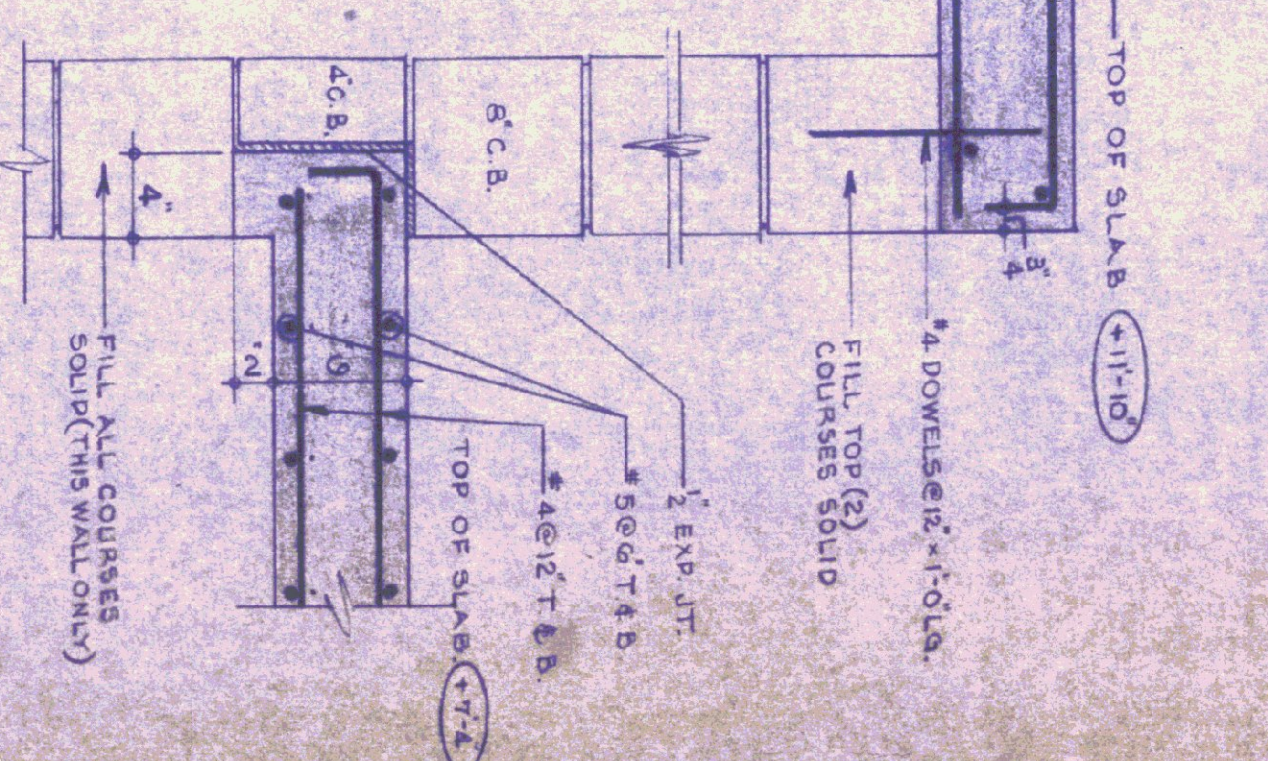
DETAIL "B"
SCALE: 1/4"=1'-0"



SECTION 4-4
SCALE: 1/4"=1'-0"



SECTION 5-5
SCALE: 1/4"=1'-0"



SECTION 6-6
SCALE: 1/4"=1'-0"

- GENERAL NOTES**
1. CONCRETE - 3000 PSI @ 28 DAYS, MAXIMUM SLUMP 4"
 2. ALL EXPOSED CONCRETE TO BE RUBBED AND CURED.
 3. ALL EXPOSED SLAB & CONCRETE STEPS TO BE RUBBED & CURED.
 4. EXPOSED CURB CORNERS TO BE CHAMFERED 1/2"
 5. ALL SLAB SHORING TO BE IN PLACE MIN (3) DAYS.
 6. MASONRY FROM CONCRETE - SLABS, DRIPPING
 7. REINFORCING STEEL TO BE LAPPED 40 DIA.
 8. ALL RE-STEEL TO BE PLACED ON SLAB BOLSTERS & NOT CHAINS. LEGS TO BE PVC PLASTIC.
 9. ELECTRIC NOTION FACET STEEL TO BE LAYERED IN ONE SECTION OF RAILINGS. EACH SIDE OF STAIRS TO BE REMOVABLE.
 10. PIPE RAILING POSTS TO BE LEADED INTO SLEEVES.
 11. ALL CONCRETE SLABS SHALL BE 15' MINIMUM THICKNESS UNLESS SHOWN OTHERWISE.
 12. ALL CONCRETE SHALL BE PLACED & FINISHED WITHIN 90 MINUTES OF POURING.
 13. ALL CONCRETE SHALL BE CURED WITH WET HEMP OR STRAW.
 14. ALL CONCRETE SHALL BE PROTECTED FROM FREEZING TEMPERATURES.
 15. ALL CONCRETE SHALL BE PROTECTED FROM SULFURIC ACID.

| NO | BY | DATE | REVISION |
|----|-----|---------|--------------------------------|
| 1 | TOS | 5/17/74 | REVISED |
| 2 | RCA | 6/17/74 | MEZZANINE CHAIRS (BOILER ROOM) |

STATE OF VERMONT
DIVISION OF STATE BUILDINGS
AGENCY OF ADMINISTRATION
MONTPELIER, VERMONT

Standard Highway Garage Building
DETAILS OF MEZZANINE, BOILER
ROOM SLABS AND CONC. STAIRWAY

DESIGNED BY: J.S.
APPROVED BY: J.S.
DATE: 10/18/74
DRAWING BY: STUDIO SEVEN INC.
DWG. NO. A4
SCALE: As noted