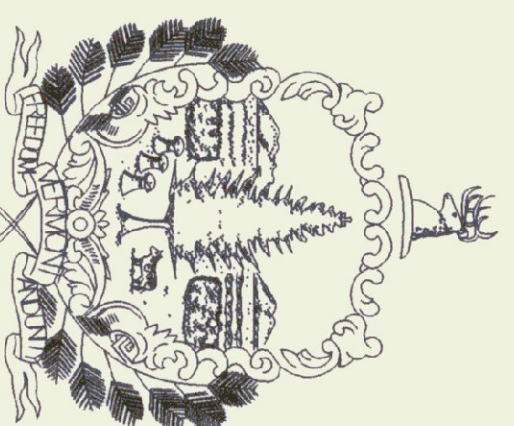


State of Vermont  
Agency of Transportation  
**MIDDLEBURY MAINTENANCE FACILITY**  
**PROPOSED 40'x84' SALT SHEDS**  
Middlebury, Vermont

AGENCY OF ADMINISTRATION  
DEPT. OF BUILDINGS & GENERAL SERVICES  
2 GOVERNOR AIKEN AVENUE  
MONTPELIER, VERMONT 05633-5801  
THOMAS W. TORTI, COMMISSIONER



Howard Dean, M.D.  
Governor

June 2000

**INDEX OF SHEETS**

1	TITLE SHEET
SD-1	GENERAL NOTES & DETAILS
SD-2	SITE PLAN
A-1	LOCATION & BUILDING - 40'x84' SALT SHEDS
B-5	SLOPE GRADING, EMBANKMENTS, MUCK
D-3	TREATED GUTTERS
T-1	TEMPORARY EROSION CONTROL DETAILS
T-2	TEMPORARY EROSION CONTROL DETAILS
L-1	PLANTING DETAILS

AGENCY OF ADMINISTRATION  
AGENCY OF TRANSPORTATION  
NATIONAL LIFE BUILDING  
MONTPELIER, VERMONT 05633-5001  
BRIAN SEARLES, SECRETARY



**PROJECT LOCATION**



**NOTES:**

1. ALL PROPOSED PAVEMENT SHALL HAVE A 1/4" THICK TYPE III WEARING COURSE AND A 3/4" THICK TYPE II BINDER COURSE, ITEM 406.25 BITUMINOUS CONCRETE PAVEMENT, UNLESS OTHERWISE DIRECTED BY THE RESIDENT ENGINEER. ALL LIQUID ASPHALT USED IN BITUMINOUS CONCRETE PAVEMENT SHALL BE PG 58-28.
  2. TACK COAT: ITEM 404.65, EMULSIFIED ASPHALT, IS TO BE APPLIED ON ALL EXISTING PAVEMENT SURFACES, ON COLD PLANNED SURFACES AND BETWEEN ALL COURSES OF PAVEMENT AT THE RATE OF 0.015 GAL/SY OR AS DIRECTED BY THE RESIDENT ENGINEER.
  3. AREAS NOTED ON THE PLANS TO HAVE EXISTING SURFACES REMOVED (PAID AS ITEM 203.28, EXCAVATION OF SURFACES AND PAVEMENTS, UNLESS OTHERWISE NOTED), SHALL HAVE CLEAN CUT EDGES ALONG JOINTS, TAKING CARE TO NOT DISTURB REMAINING PAVEMENT AND/OR SUBBASE. THE EXCAVATED MATERIAL SHALL BE REMOVED FROM THE PROJECT, AS DIRECTED BY THE RESIDENT ENGINEER.
- EXISTING SUBBASE MATERIAL DEEMED UNSUITABLE BY THE ENGINEER SHALL BE EXCAVATED TO A DEPTH OF 3"+/- OR AS DIRECTED BY THE ENGINEER. EXCAVATED MATERIAL SHALL BE USED AS BORROW OR REMOVED FROM THE PROJECT, AS DIRECTED BY THE RESIDENT ENGINEER. EXCAVATION WILL BE PAID FOR AS ITEM 203.28 EXCAVATION OF SURFACES AND PAVEMENTS, UNLESS OTHERWISE NOTED.
- MATERIAL REMOVED SHALL BE REPLACED WITH ITEM 301.28, SUBBASE OF CRUSHED GRAVEL (FINE GRADED).
- ALONG THE CUT EDGES OF PAVEMENT, THE SUBBASE SHALL BE BROUGHT UP TO GRADE WITH ITEM 301.28, SUBBASE OF CRUSHED GRAVEL (FINE GRADED), AS DIRECTED BY THE RESIDENT ENGINEER. SEE DETAILS ON THIS SHEET.
4. UPON COMPLETION OF THE GRADING OPERATIONS FOR EARTH SIDESLOPE AREAS, THE CONTRACTOR SHALL IMMEDIATELY ESTABLISH VEGETATION IN ACCORDANCE WITH THE SEEDING REQUIREMENTS ON THIS SHEET.
  5. SEE VAOT STANDARD DRAWINGS T-1 AND T-2 FOR TEMPORARY EROSION CONTROL DETAILS.
  6. ALL EXISTING MATERIAL STORED ON SITE (SAND, COLD PLANE GRINDINGS, BRUSH, ECT.) SHALL BE REMOVED BY VAOT PRIOR TO CONSTRUCTION.
  7. UTILITIES SHOWN ON THESE PLANS ARE APPROXIMATE. THE CONTRACTOR SHALL WORK WITH THE VAOT IN DETERMINING ACTUAL LOCATION OF UTILITIES.
  8. CONTRACTOR SHALL SUPPLY UNDERGROUND POWER TO NEW SHEDS, AND SHALL CONTACT THE LOCAL POWER COMPANY(S) CONCERNING THIS WORK. ANY EXISTING CIRCUITS MAY BE USED IF APPLICABLE. CONTRACTOR SHOULD FIELD VERIFY EXISTING CIRCUITS. GENERAL WIRING SHALL BE PVC CONDUIT WITH WIRE SUITABLE FOR UNDERGROUND OR WET LOCATION WITH NOT MORE THAN 3% VOLTAGE DROP FROM SOURCE TO END OF CIRCUIT, AND SHALL MEET ALL LOCAL AND NEC REQUIREMENTS. CONTRACTOR SHALL SUPPLY RESIDENT ENGINEER WITH A SKETCH SIGNED BY A MASTER ELECTRICIAN, SHOWING ROUTING AND METHOD OF LAYING CONDUIT/SUPPLY WIRING, AND COPIES OF ALL ELECTRICAL PERMITS.
- CIRCUITS AND WIRING SHALL HAVE ENOUGH CAPACITY TO ALLOW FUTURE EXTENSION (BY OTHERS) TO ACCOMMODATE A CHLORIDE PUMP AND AN OVERHEAD LIGHT (BY OTHERS). ASSUME THE CHLORIDE TANK INSTALLATION (BY OTHERS) WILL BE WITHIN 50' OF THE SALT/SAND SHED THAT IS FURTHEST FROM THE POWER SOURCE. CHECK WITH DISTRICT ON PUMP POWER REQUIREMENTS.
- ALL COSTS ASSOCIATED WITH THIS WORK (EXTENSION OF EXISTING POWER SUPPLY TO PROPOSED STRUCTURES) INCLUDING ALL TOOLS, EQUIPMENT, MATERIALS, LABOR AND INCIDENTALS NECESSARY TO PROVIDE A FULL FUNCTIONAL ELECTRICAL SYSTEM/SUPPLY, AND ALL ELECTRICAL PERMITS) WILL NOT BE PAID FOR DIRECTLY BUT WILL BE CONSIDERED SUBSIDIARY TO ITEM 658.15 - ROADSIDE REST FACILITY (MODIFIED).
- ALL COSTS ASSOCIATED WITH REMOVAL OF EXISTING UTILITY POLES AND OVERHEAD AERIAL LINES WILL NOT BE PAID FOR DIRECTLY BUT WILL BE CONSIDERED SUBSIDIARY TO ITEM 202.10 - DEMOLITION AND DISPOSAL OF BUILDING.

SEEDING FORMULA RURAL AREAS			
% WT.	LBS./A.	NAME	PUR. %
37.5	22.5	CREeping RED FESCUE	98
37.5	22.5	TALL FESCUE	95
5.0	3.0	RED TOP	95
15.0	9.0	BIRDFOOT TREFOL	98
5.0	3.0	ANNUAL RYE GRASS	95
100.0	60.0		85

SEEDING FORMULA URBAN AREAS			
% WT.	LBS./A.	NAME	PUR. %
42.5	34.0	CREeping RED FESCUE	98
10.0	8.0	PERENNIAL RYE GRASS	95
42.5	34.0	KENTUCKY BLUE GRASS	85
5.0	4.0	ANNUAL RYE GRASS	95
100.0	80.0		85

SEED MIXTURE SHALL NOT HAVE A WEED CONTENT EXCEEDING 0.40% BY WEIGHT AND SHALL BE FREE OF ALL NOXIOUS SEED.

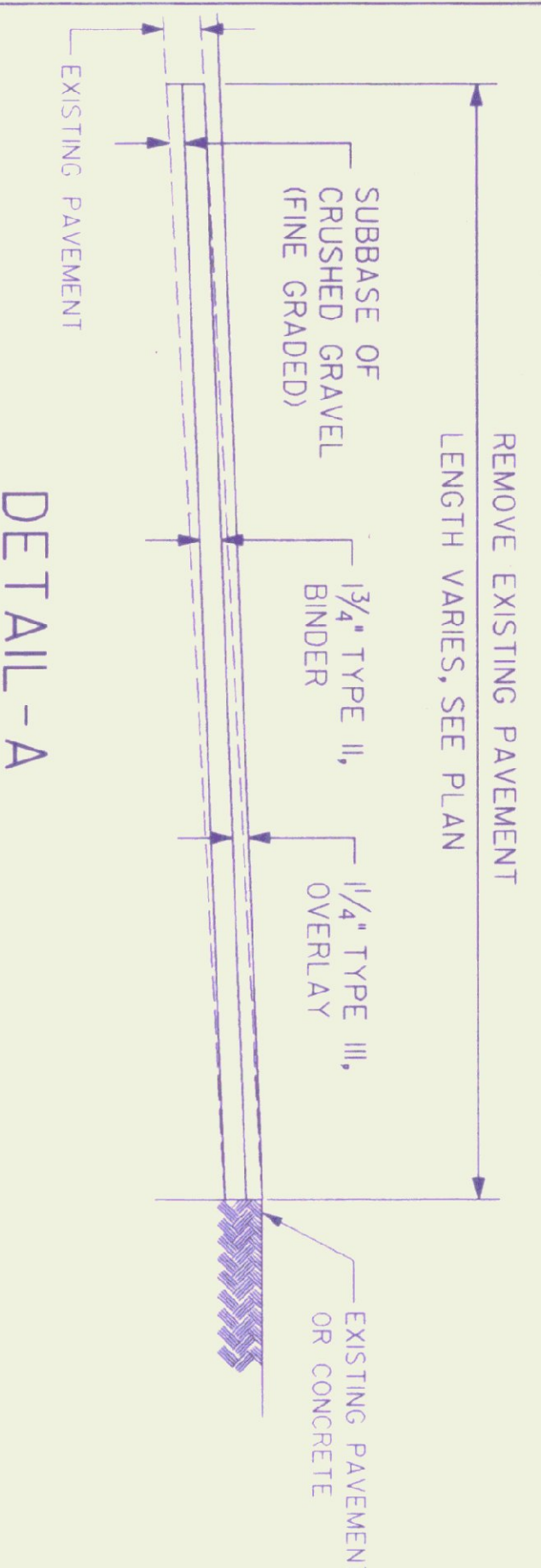
SEEDS TO BE APPLIED PER SEEDING FORMULA OR AS DIRECTED BY THE ENGINEER.

FERTILIZER FORMULA 10-20-10 TO BE USED WITH SEED, APPLIED AT THE RATE OF 500 LBS./ACRE (HYDRO SEEDERS MAY USE 19-19-19 FORMULA).

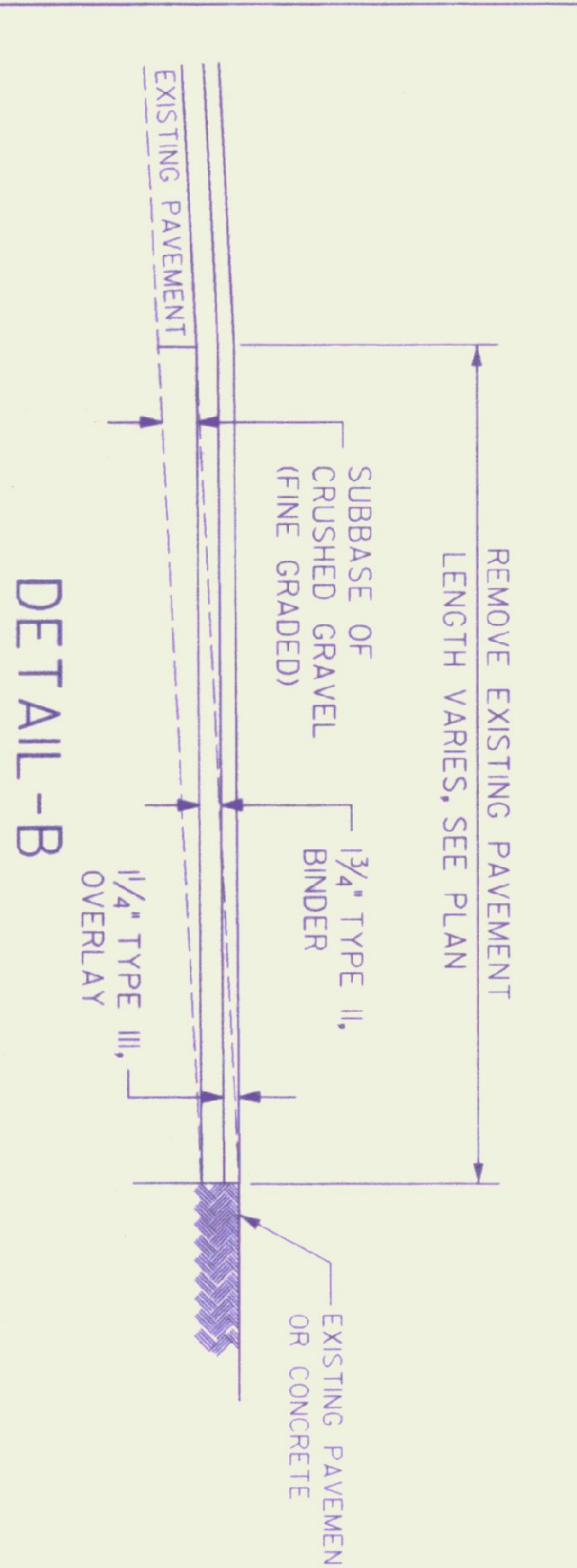
AGRICULTURAL LIMESTONE TO BE APPLIED AT THE RATE OF 2 TONS/ACRE, OR AS DIRECTED BY THE ENGINEER.

HAY MULCH TO BE PLACED ON EARTH SLOPES AT THE RATE OF 2 TONS/ACRE, OR AS DIRECTED BY THE ENGINEER.

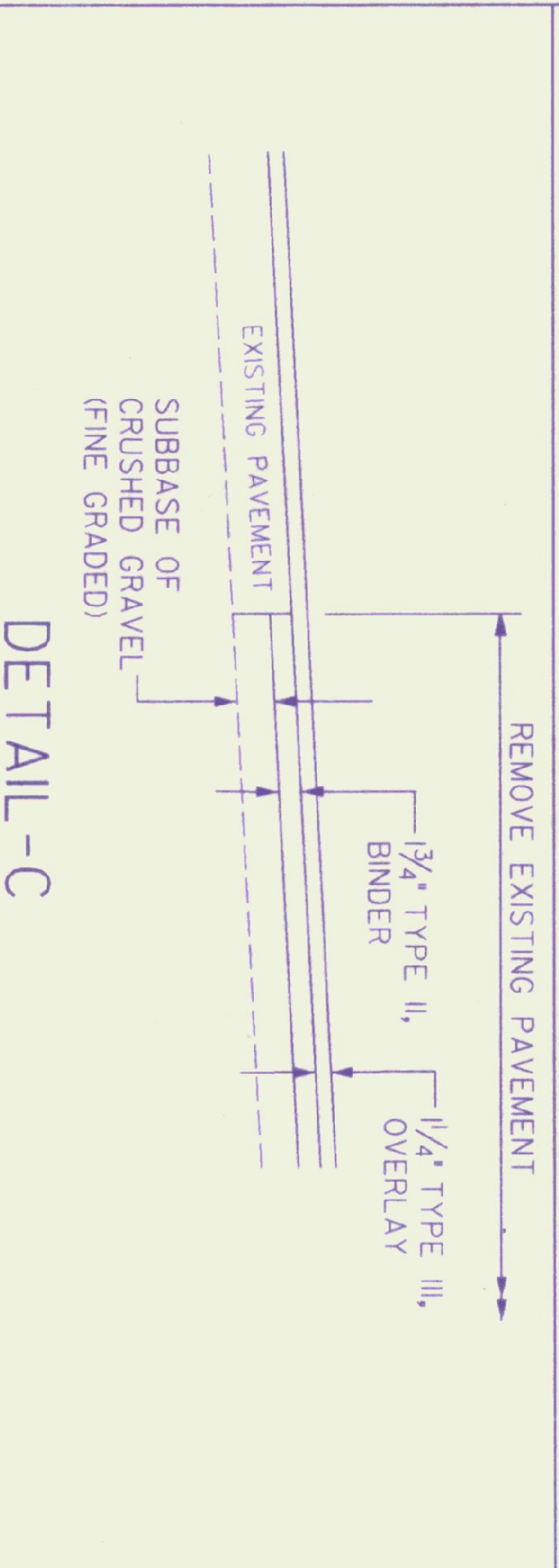
TOPSOIL TO BE USED WITH SEED AS INDICATED ON THE PLANS, OR AS DIRECTED BY THE ENGINEER.



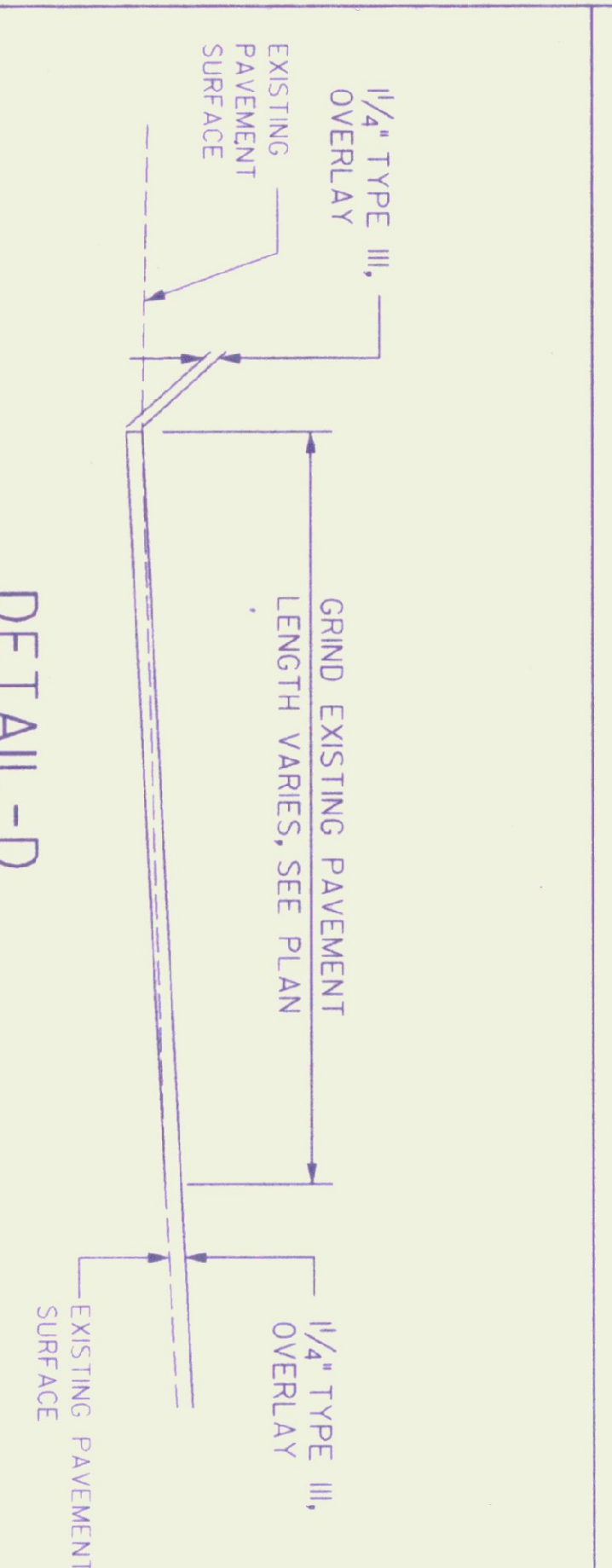
This detail applies to this project  
 This detail does not apply to this project



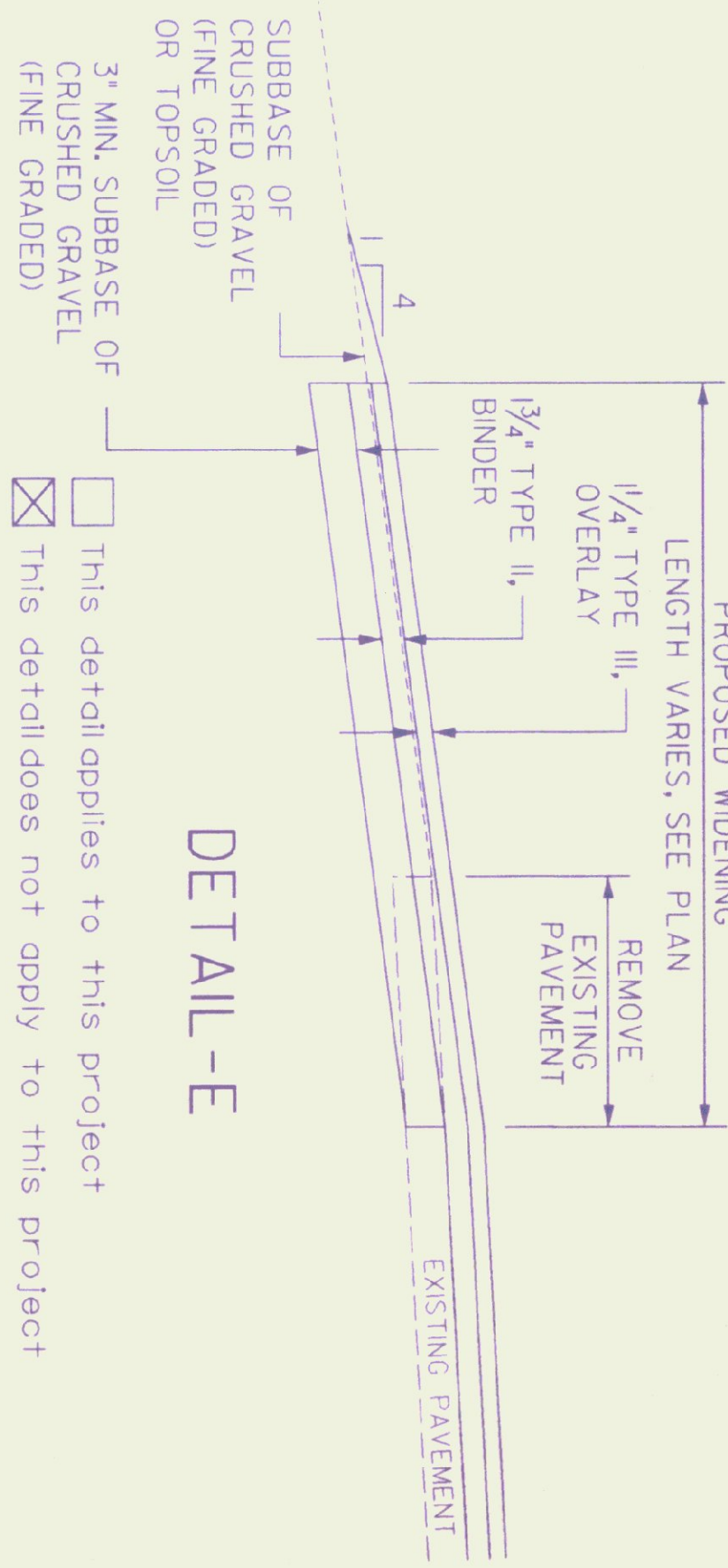
This detail applies to this project  
 This detail does not apply to this project



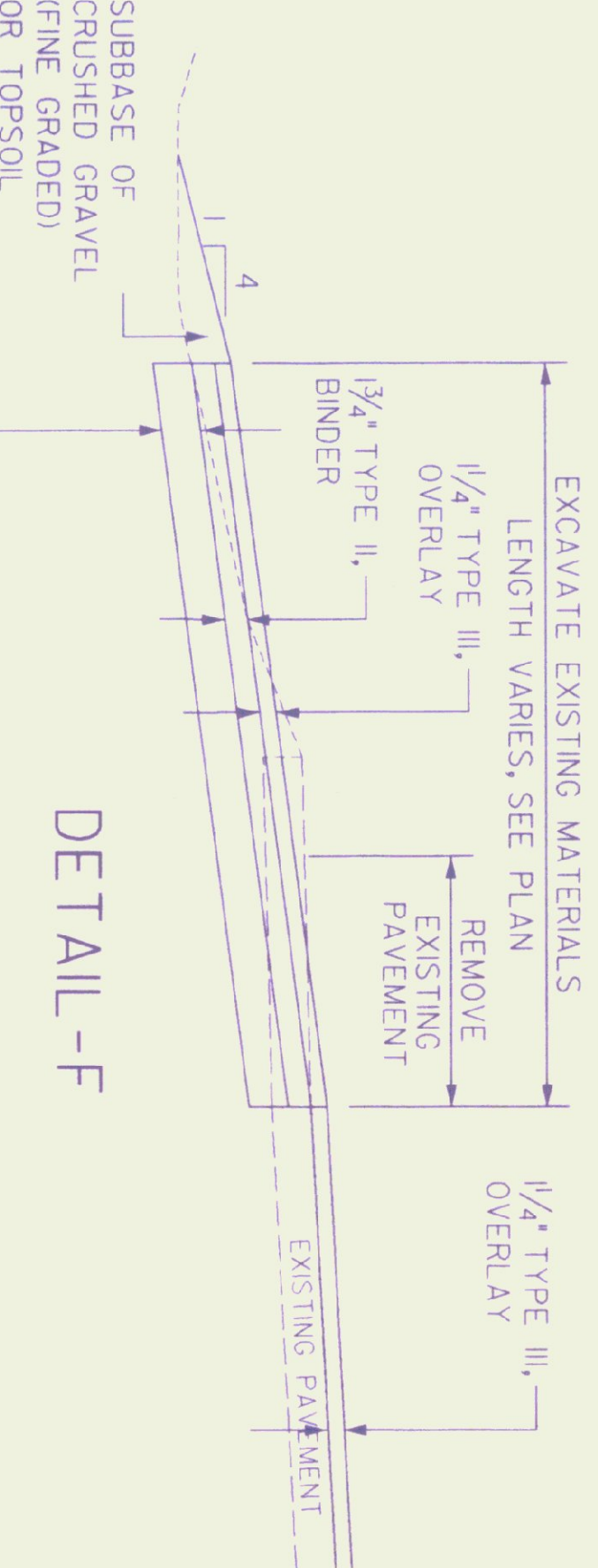
This detail applies to this project  
 This detail does not apply to this project



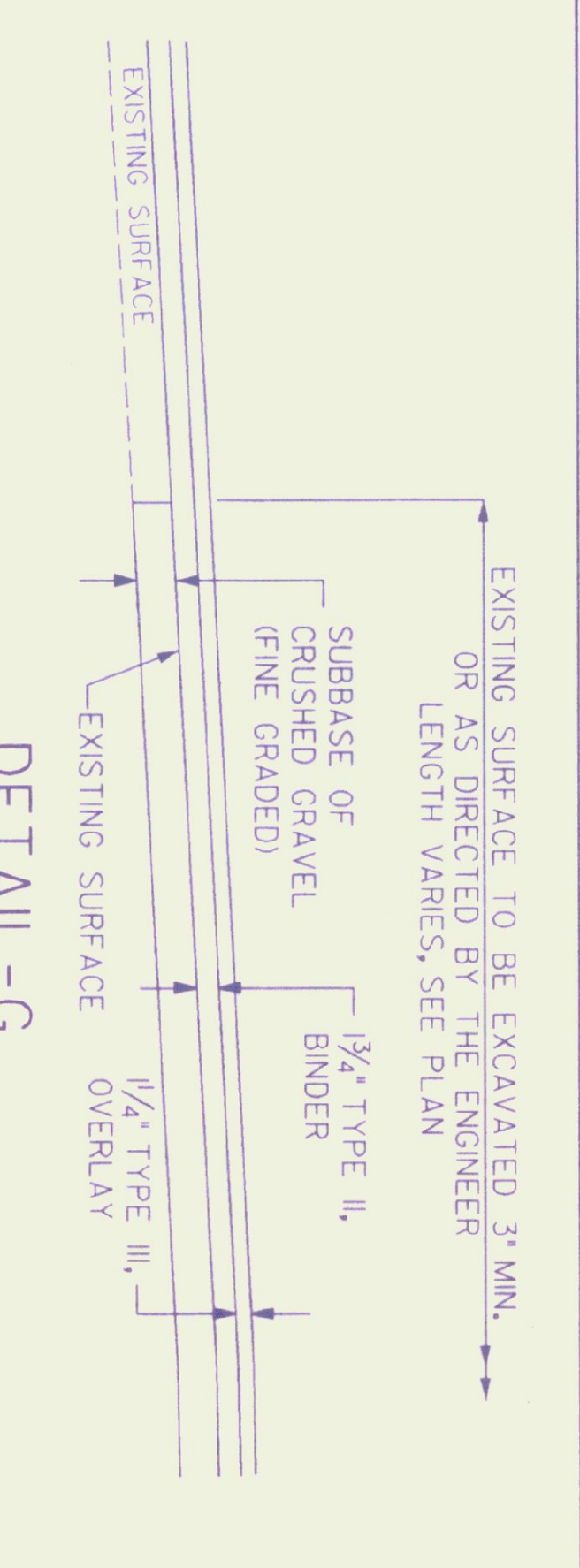
This detail applies to this project  
 This detail does not apply to this project



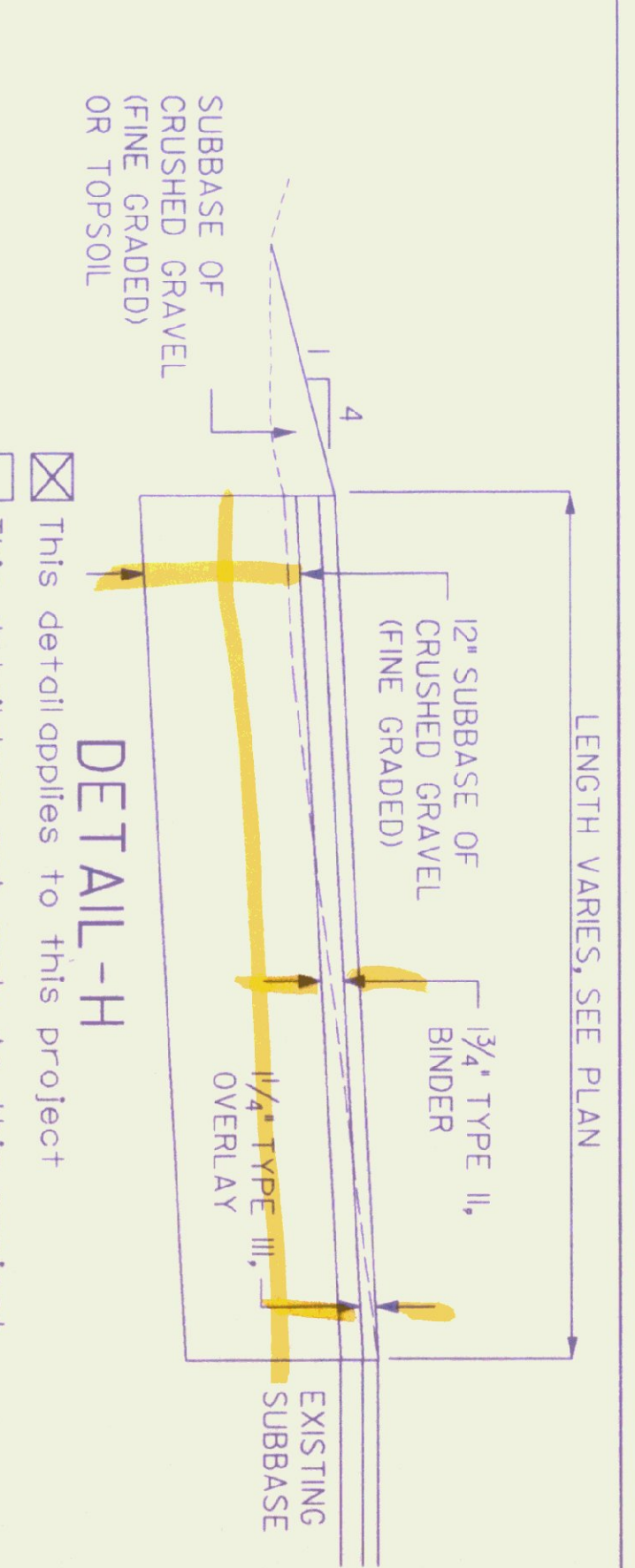
This detail applies to this project  
 This detail does not apply to this project



This detail applies to this project  
 This detail does not apply to this project



This detail applies to this project  
 This detail does not apply to this project



This detail applies to this project  
 This detail does not apply to this project

PROJECT: MIDDLEBURY SALT SHED PROJECT NO.: STP SALT (9)

DESIGN FILE NAME: 98215TYP.dgn PLOT DATE: JUNE 1999

IPAWM FILE NAME: CLD\_ENGINEERS SURVEY DATE: N/A

SURVEYED BY: J. WARNER DRAWN BY: P. HOLT

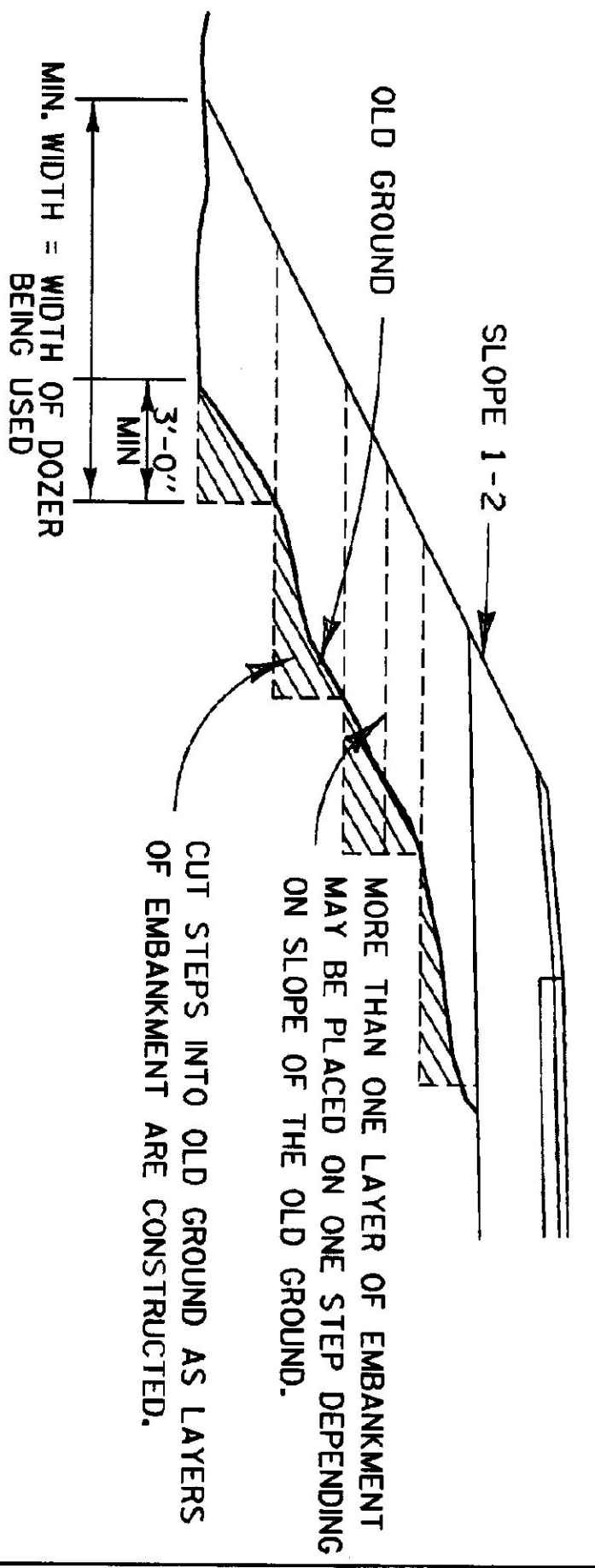
SQUAD LEADER: SHEET: SD-1

DATUM  
 VERTICAL \_\_\_\_\_  
 HORIZONTAL \_\_\_\_\_

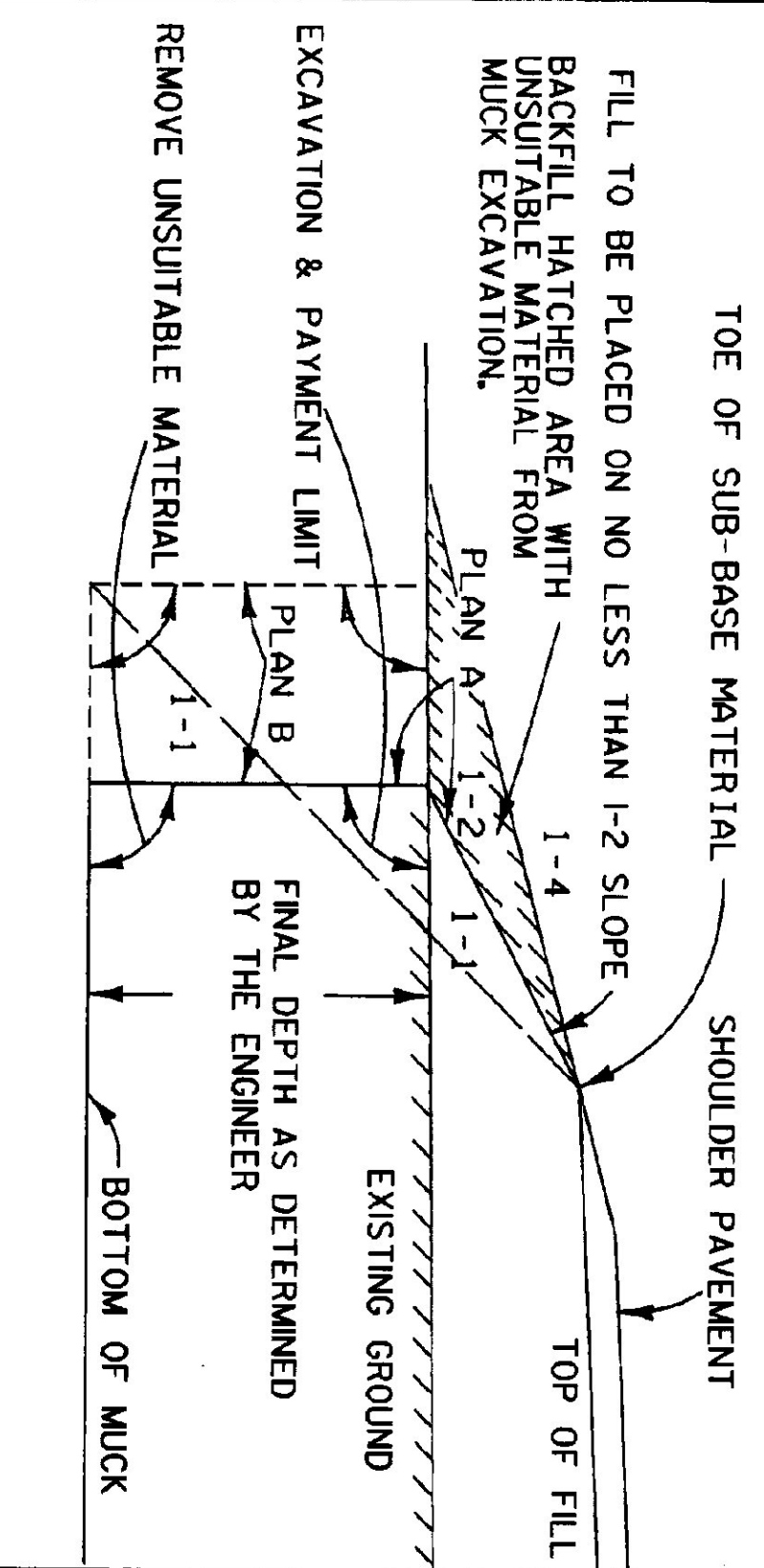






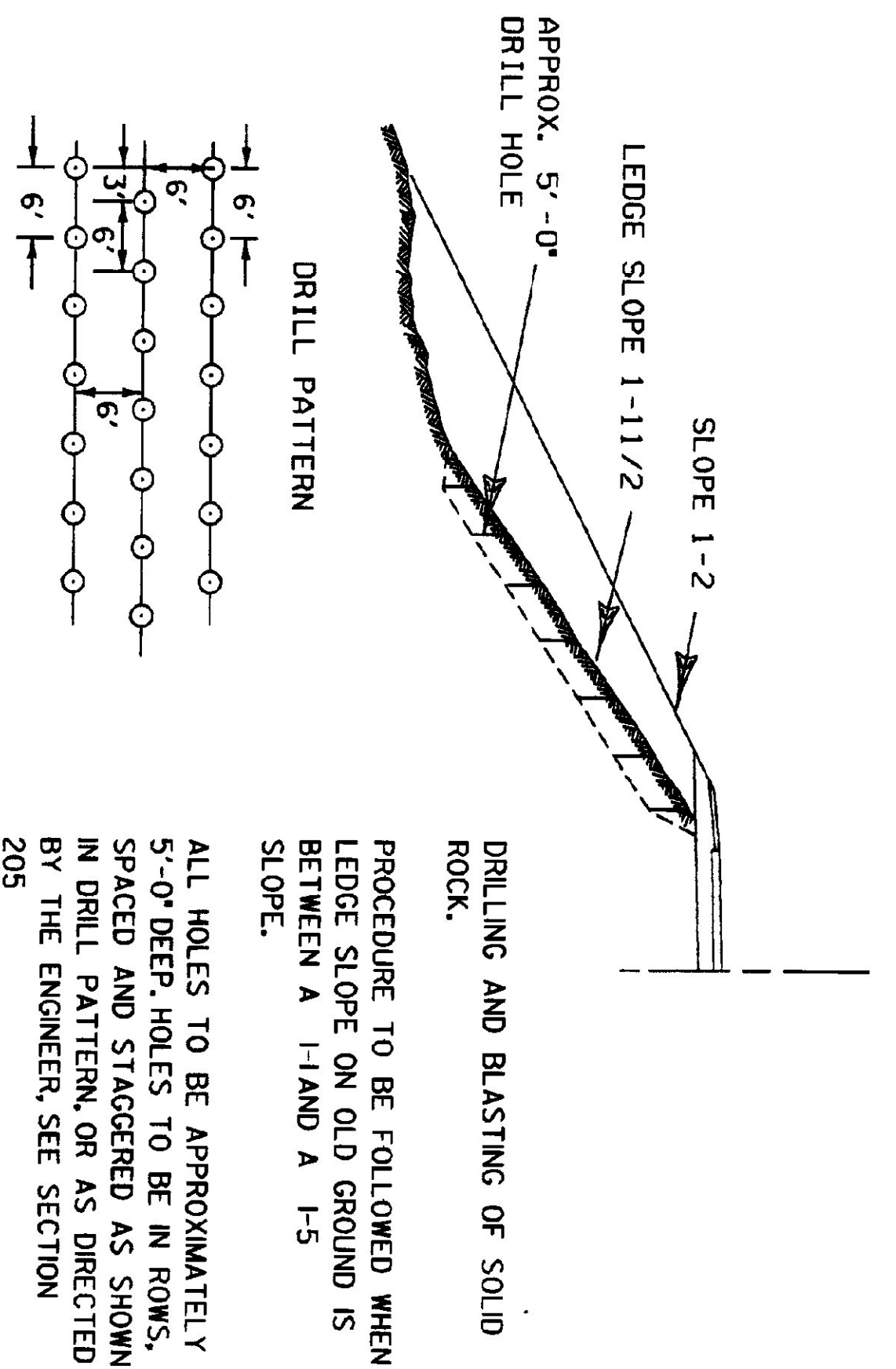


METHOD FOR CONSTRUCTING AN EMBANKMENT ON EARTH SLOPE



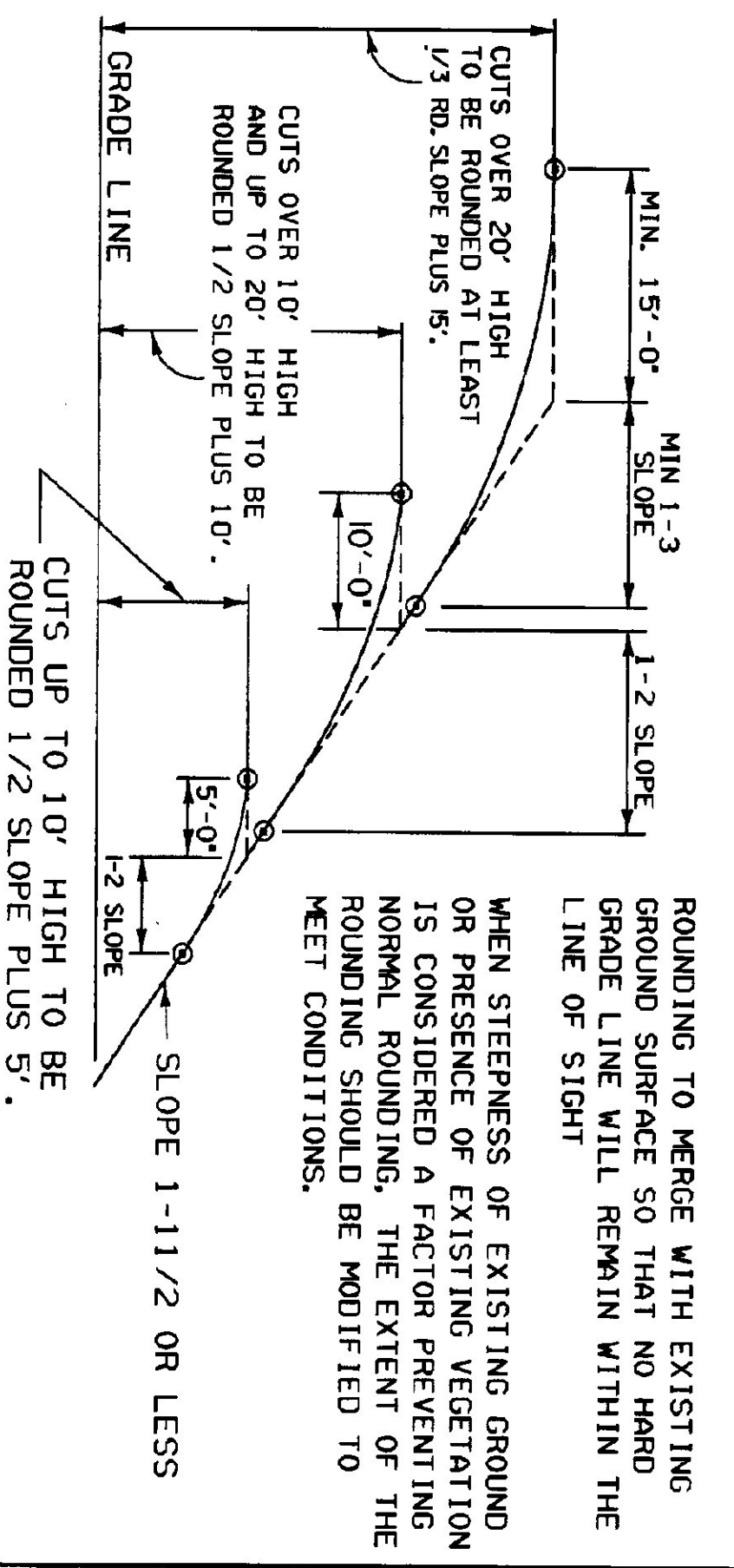
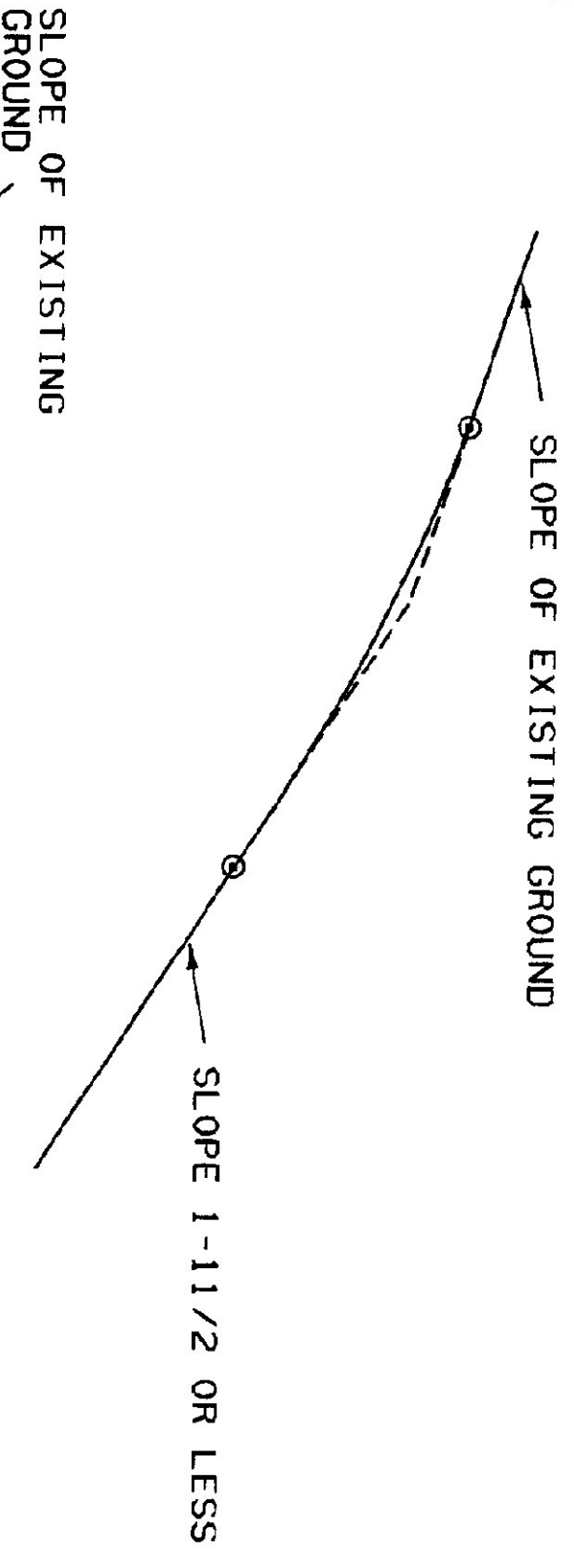
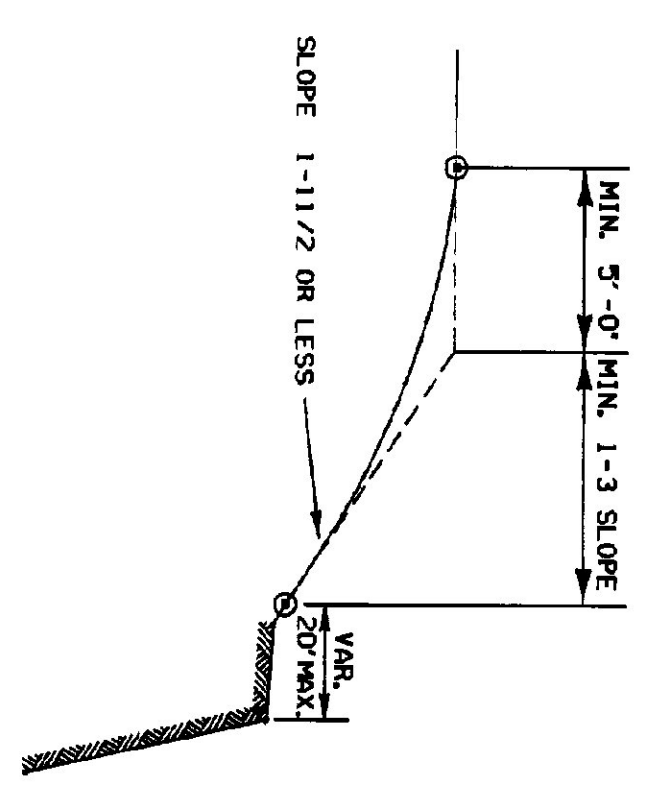
GENERAL NOTES:  
 THE MUCK OR UNSUITABLE MATERIAL SHALL BE EXCAVATED TO THE NEAT LINES SHOWN ON THE PLANS OR AS DETERMINED BY THE ENGINEER.  
 EXCAVATION AND PAYMENT LIMIT WILL BE DETERMINED FROM EITHER PLAN 'A' OR PLAN 'B', WHICHEVER PRODUCES THE GREATER WIDTH IN A GIVEN MUCK AREA.  
 BACKFILL MATERIAL MUST MEET THE REQUIREMENTS SET FORTH UNDER MUCK EXCAVATION, SECTION 203

TYPICAL NEAT PAY LINES FOR MUCK EXCAVATION



A METHOD FOR PREPARING LEDGE SLOPE BEFORE CONSTRUCTING AN EMBANKMENT

EMBANKMENT ON EARTH SLOPE  
 EMBANKMENT ON ROCK SLOPE  
 MUCK EXCAVATION  
 TYPICAL SLOPE ROUNDING



TYPICAL SLOPE ROUNDING

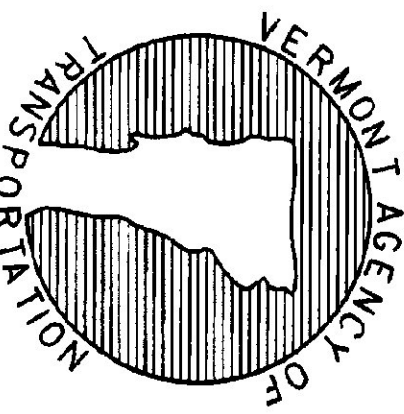
REVISIONS AND CORRECTIONS

DEC. 6, 1971 - ORIGINAL APPROVAL DATE  
 JUNE 1, 1994 - REISSUED, WITHOUT CHANGE,  
 UNDER NEW SIGNATURES.

APPROVED

APPROVED FOR THIS PROJECT AND/OR DESIGN AND EXCAVATION, FINA FINAL APPROVAL PENDING.

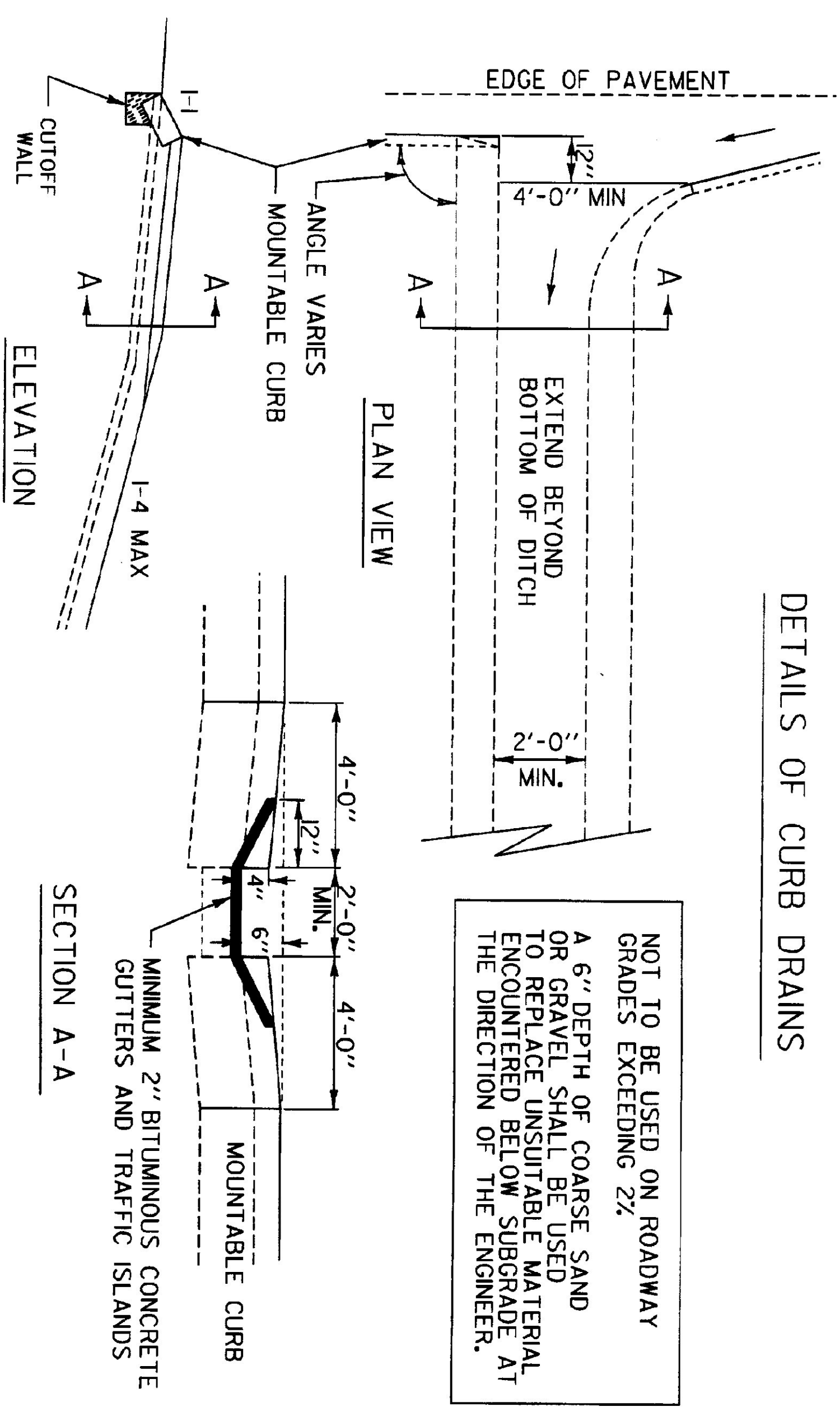
*Stephen D. MacCulloch, P.E.*  
 DIRECTOR OF ENGINEERING  
*Michael J. Murphy, P.E.*  
 DESIGN ENGINEER



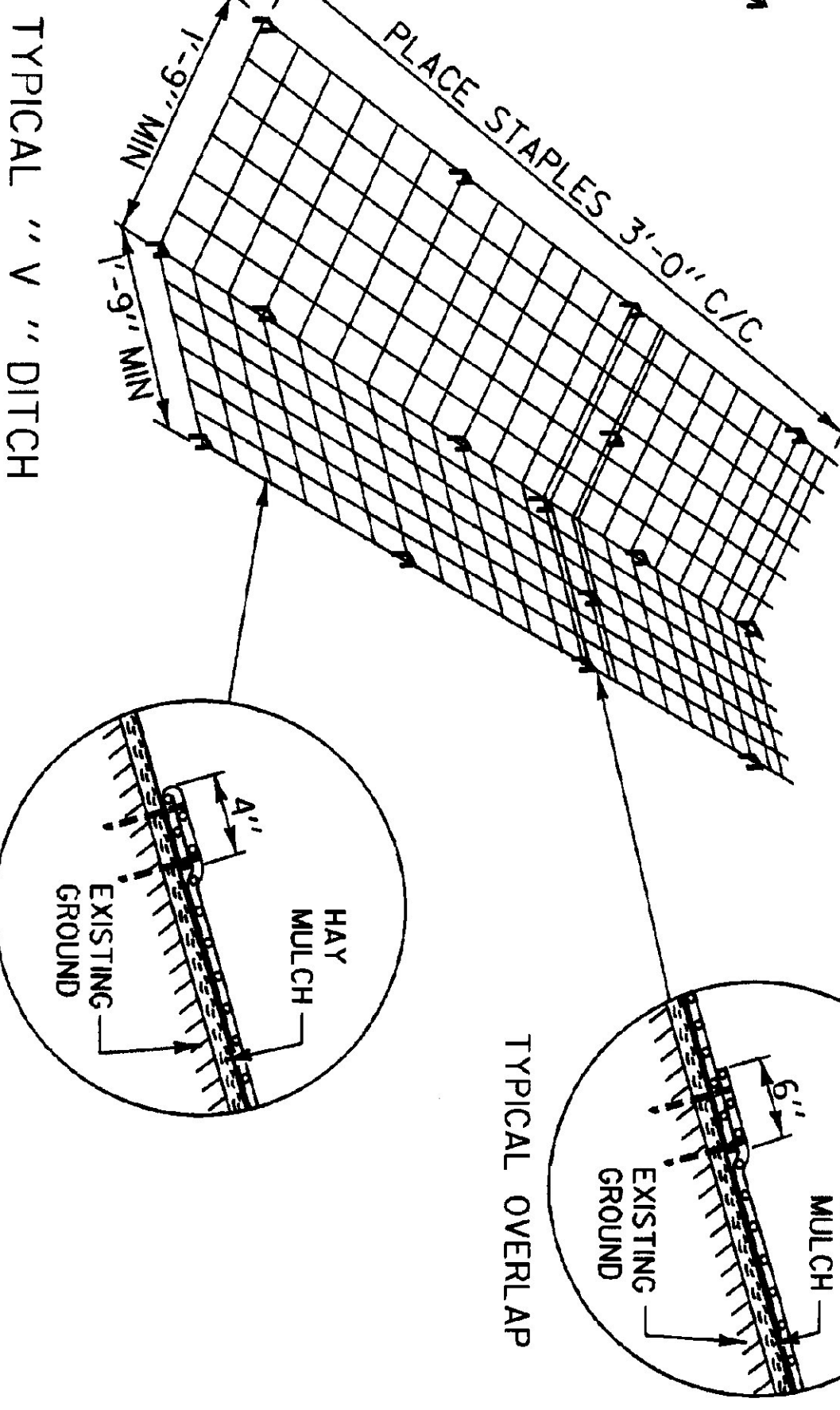
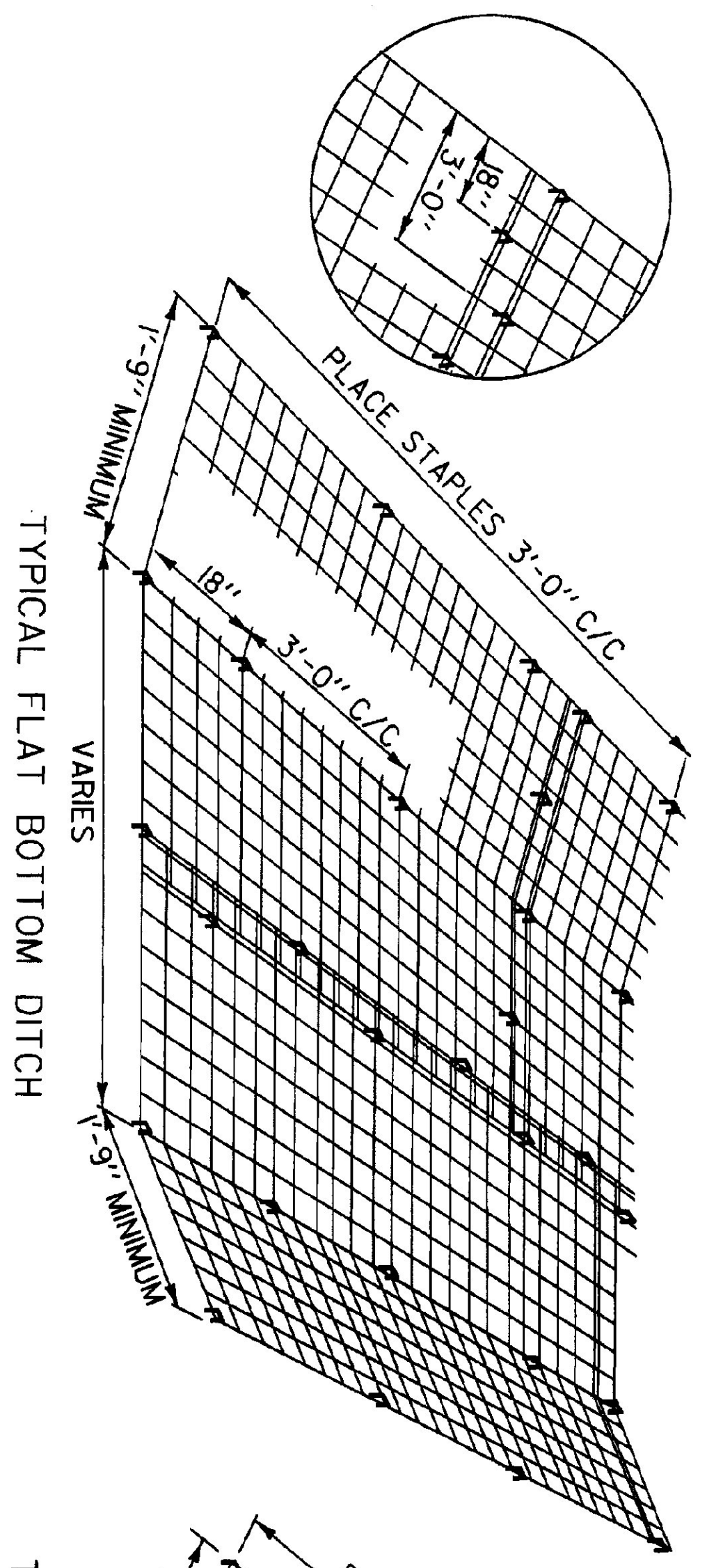
STANDARD

B-5

DETAILS OF CURB DRAINS



ON ALL OVERLAPS, PLACE STAPLES EVERY 18", ALTERNATING ON BOTH SIDES OF 6" OVERLAP.

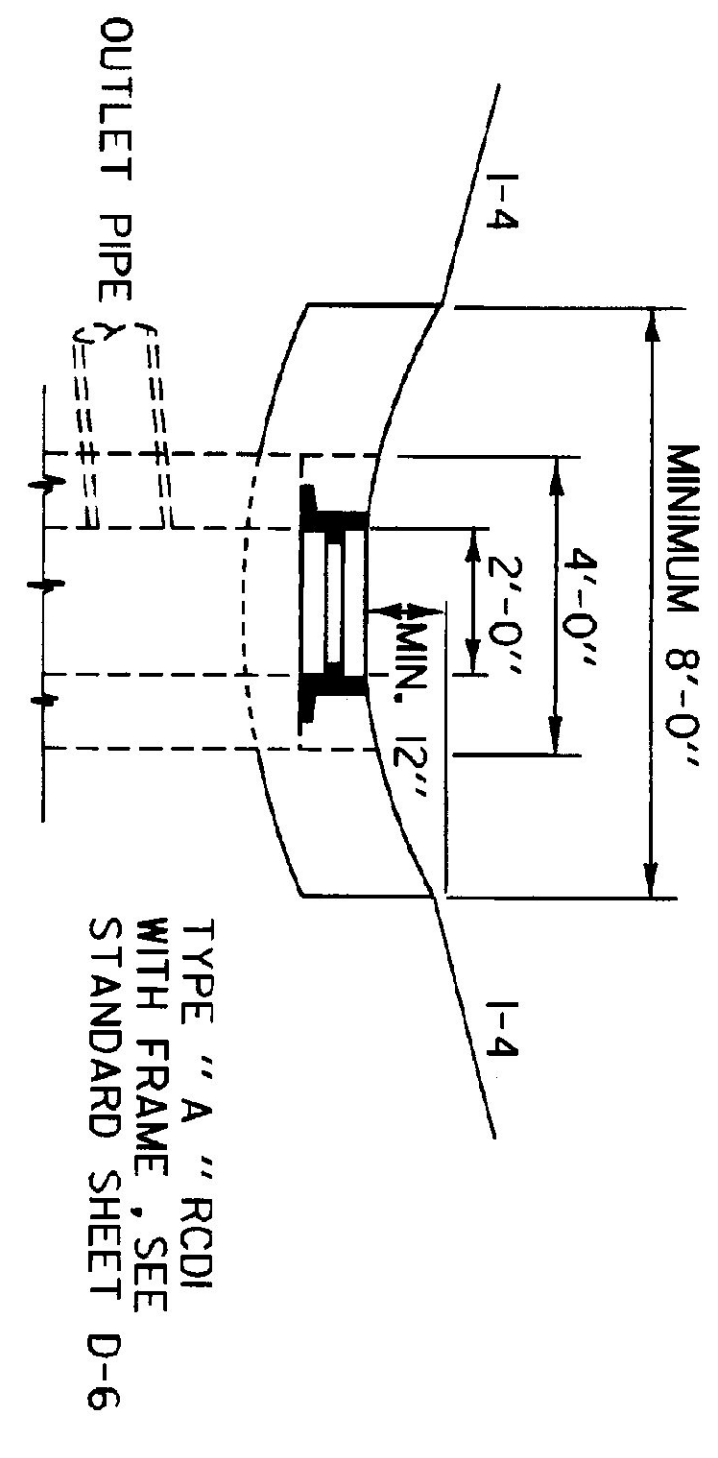


DETAILS OF PLACING EROSION MATTING

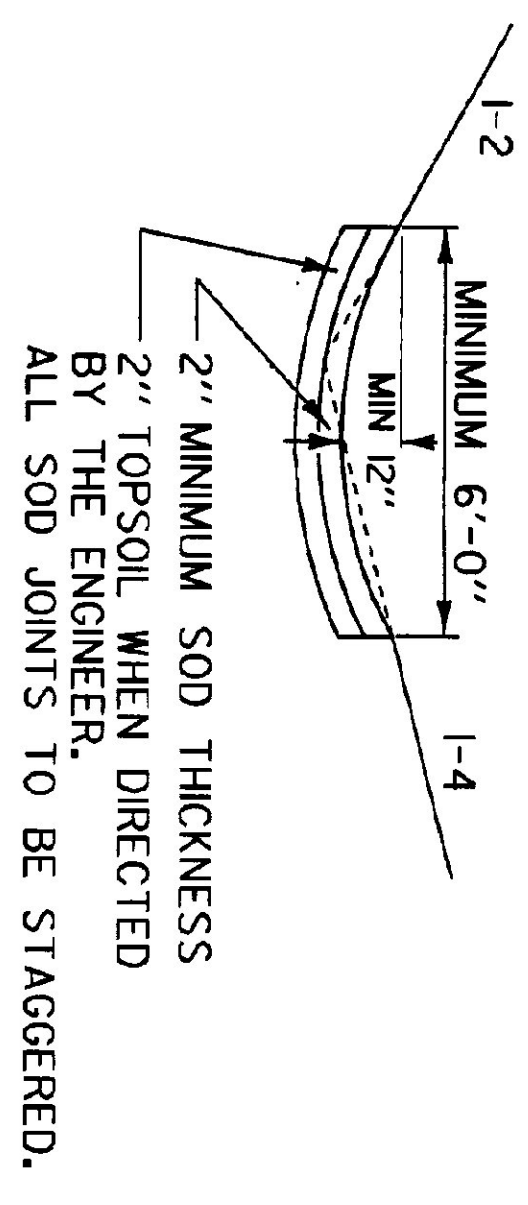
REVISIONS AND CORRECTIONS  
 APR. 2, 1986 - ORIGINAL APPROVAL DATE  
 JUNE 1, 1994 - REISSUED, WITHOUT CHANGE,  
 UNDER NEW SIGNATURES.

APPROVED FOR THIS PROJECT AND/OR DESIGN AND FOR FINAL APPROVAL REMAINS:  
 [Signature]  
 DIRECTOR OF ENGINEERING  
 DESIGN ENGINEER

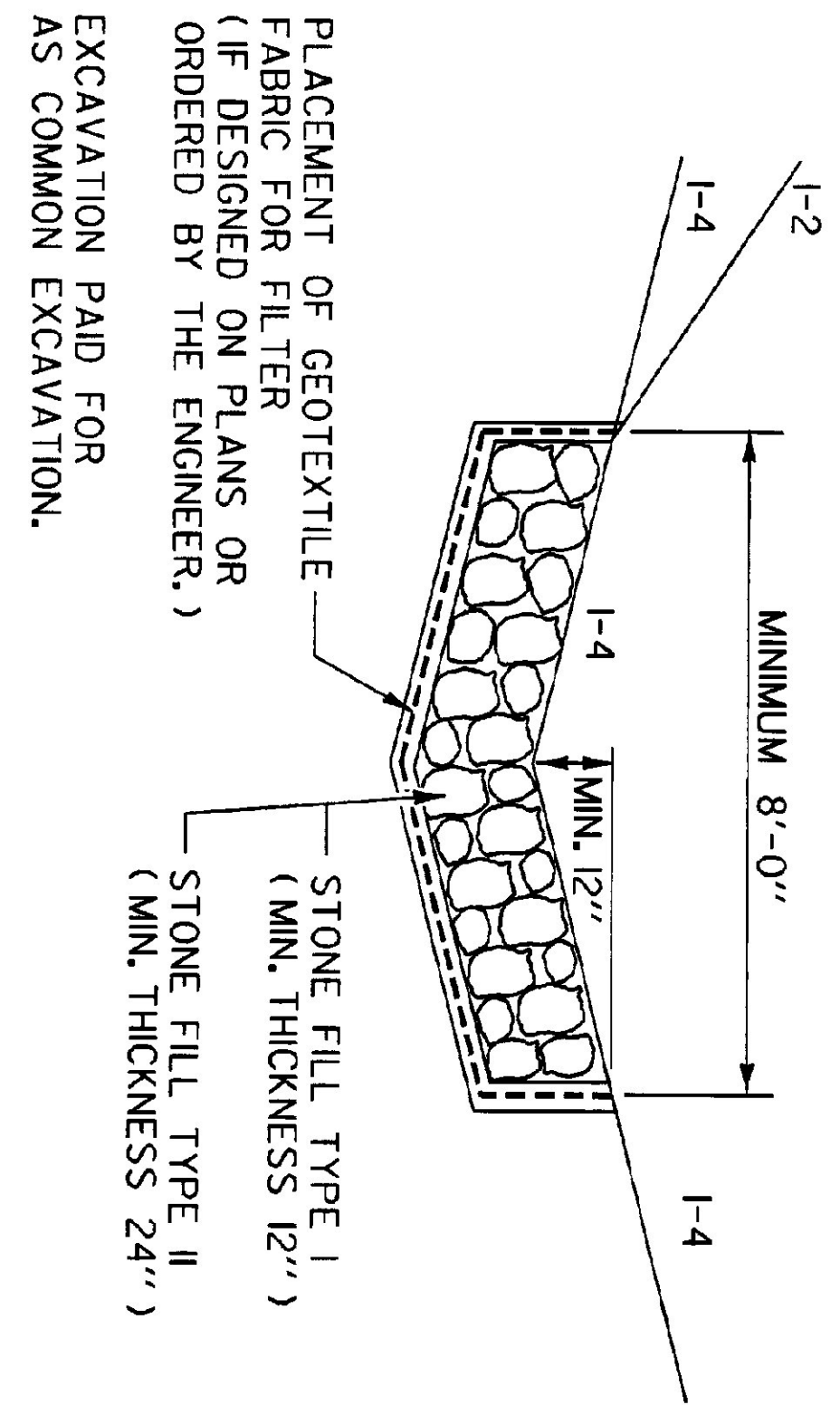
DROP INLET WITH GRATE IN TREATED GUTTER



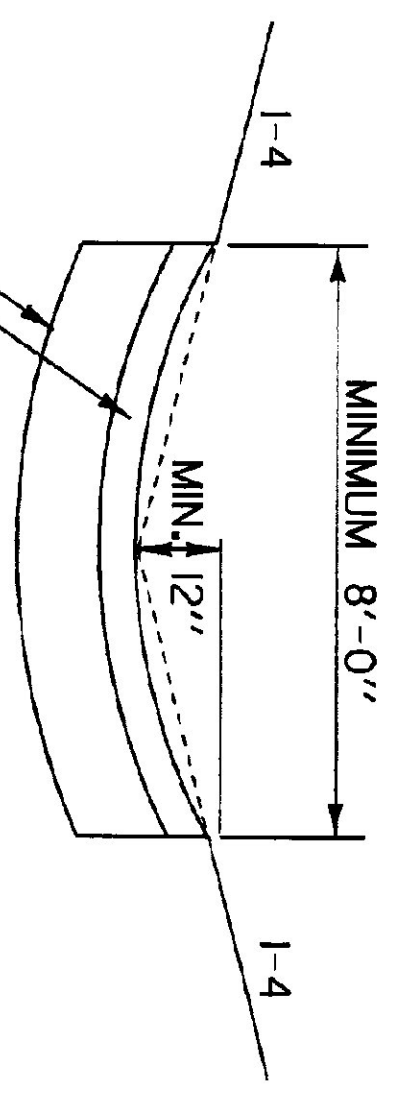
SODDING



STONE FILL TYPE I  
 STONE FILL TYPE II

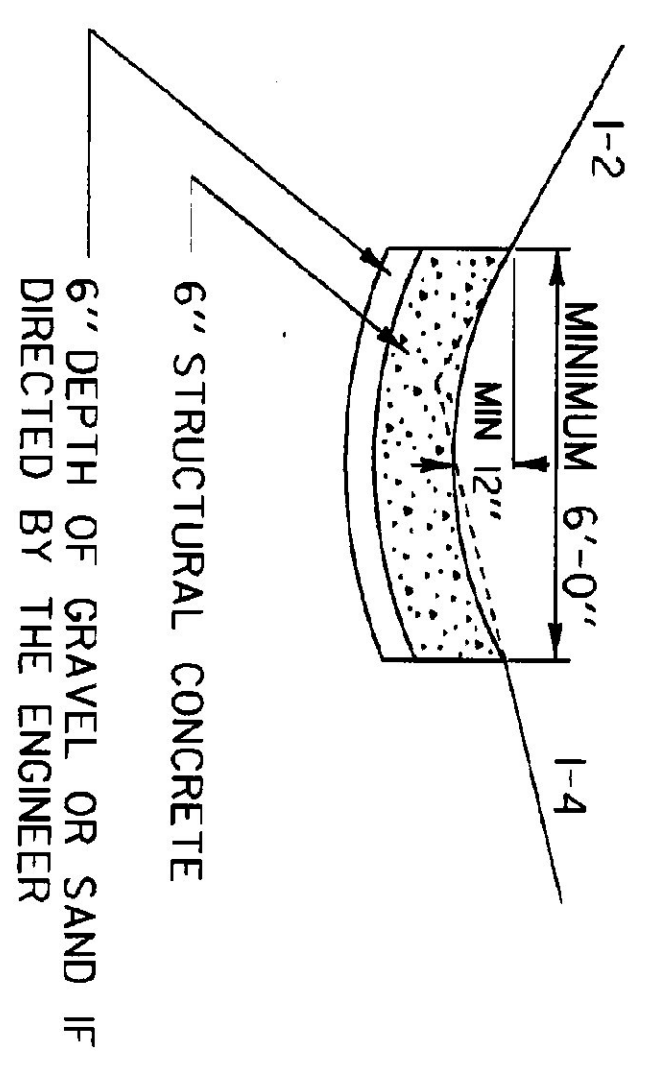


BITUMINOUS CONCRETE GUTTERS AND TRAFFIC ISLANDS

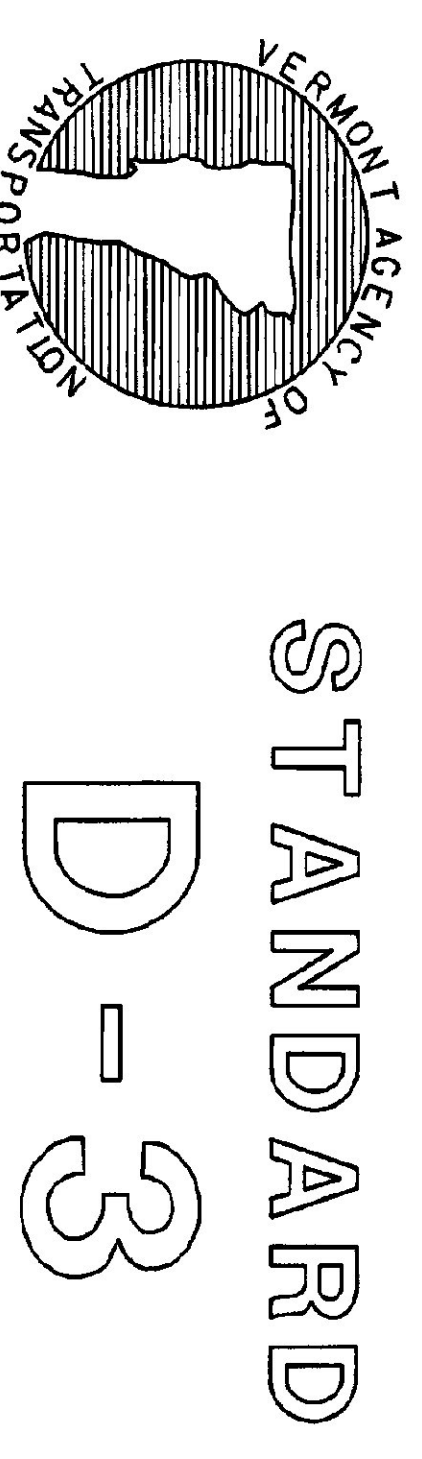


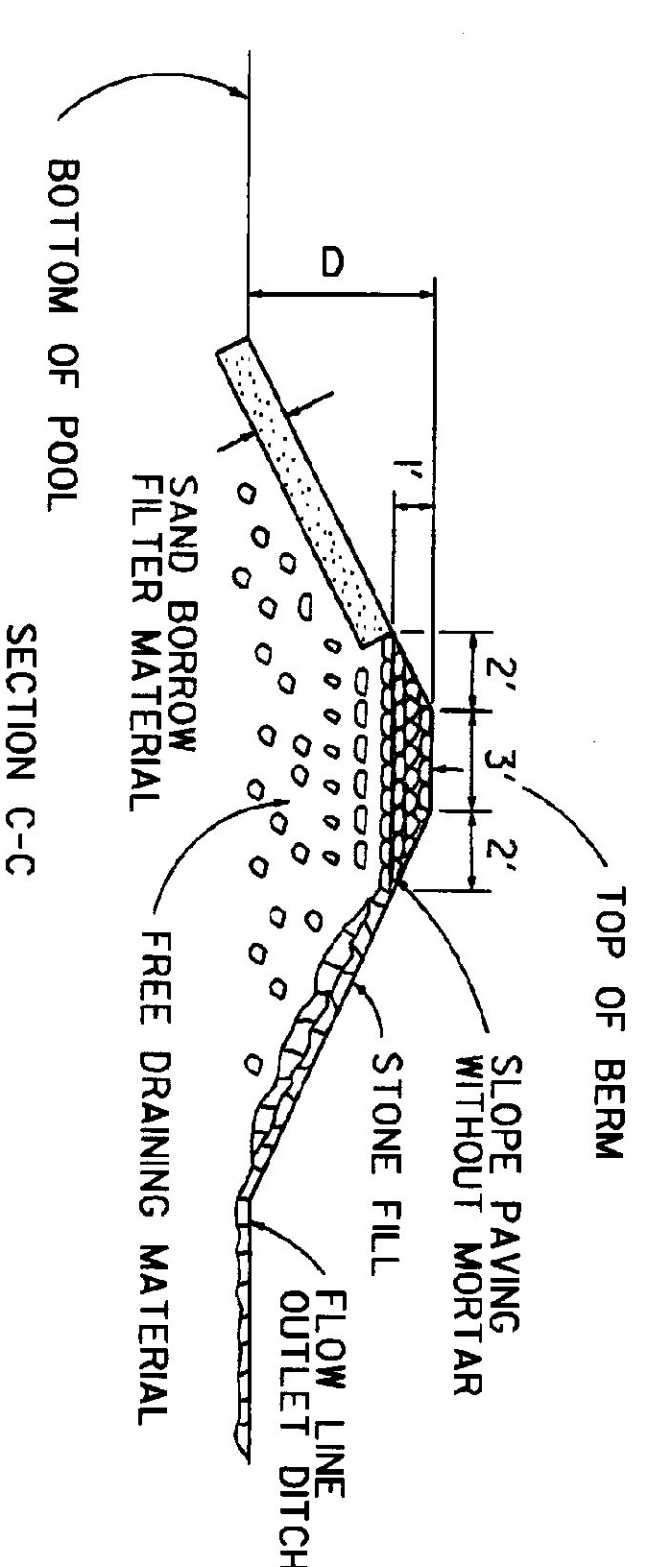
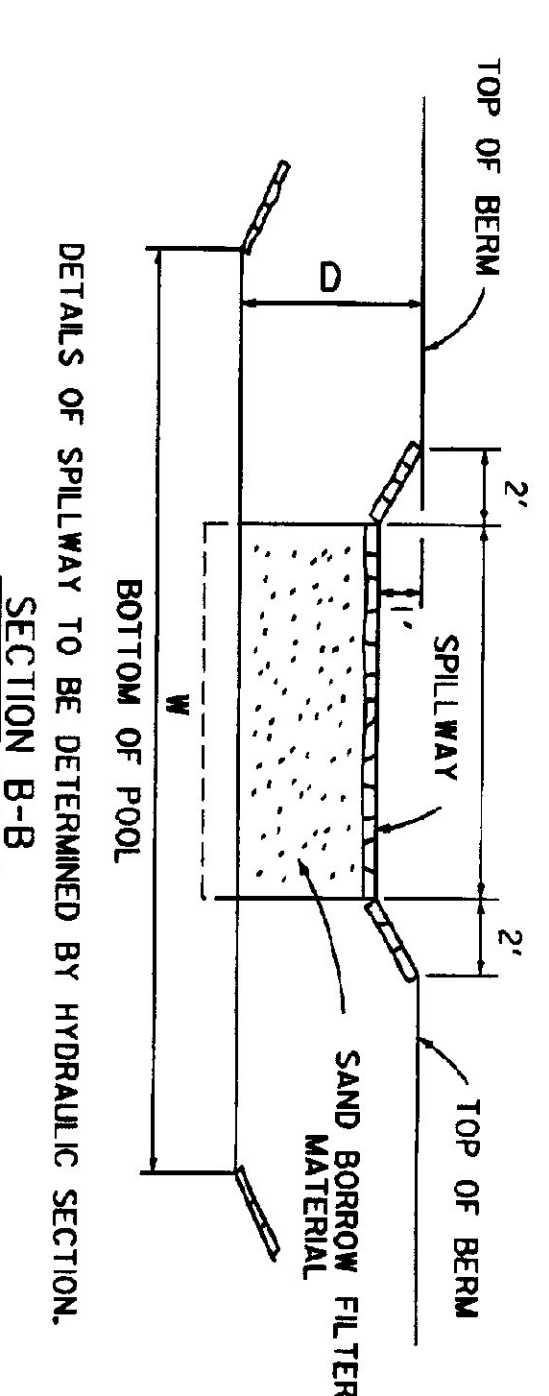
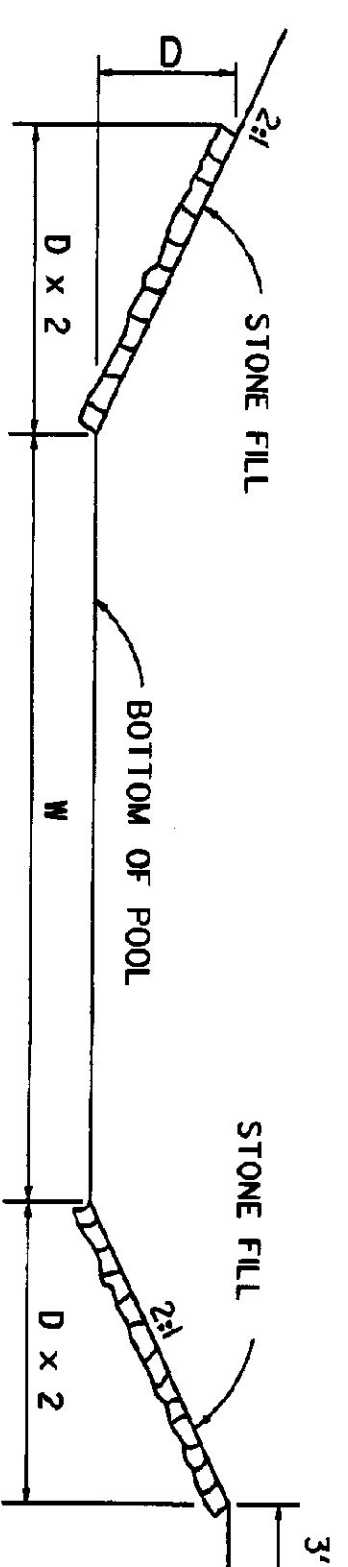
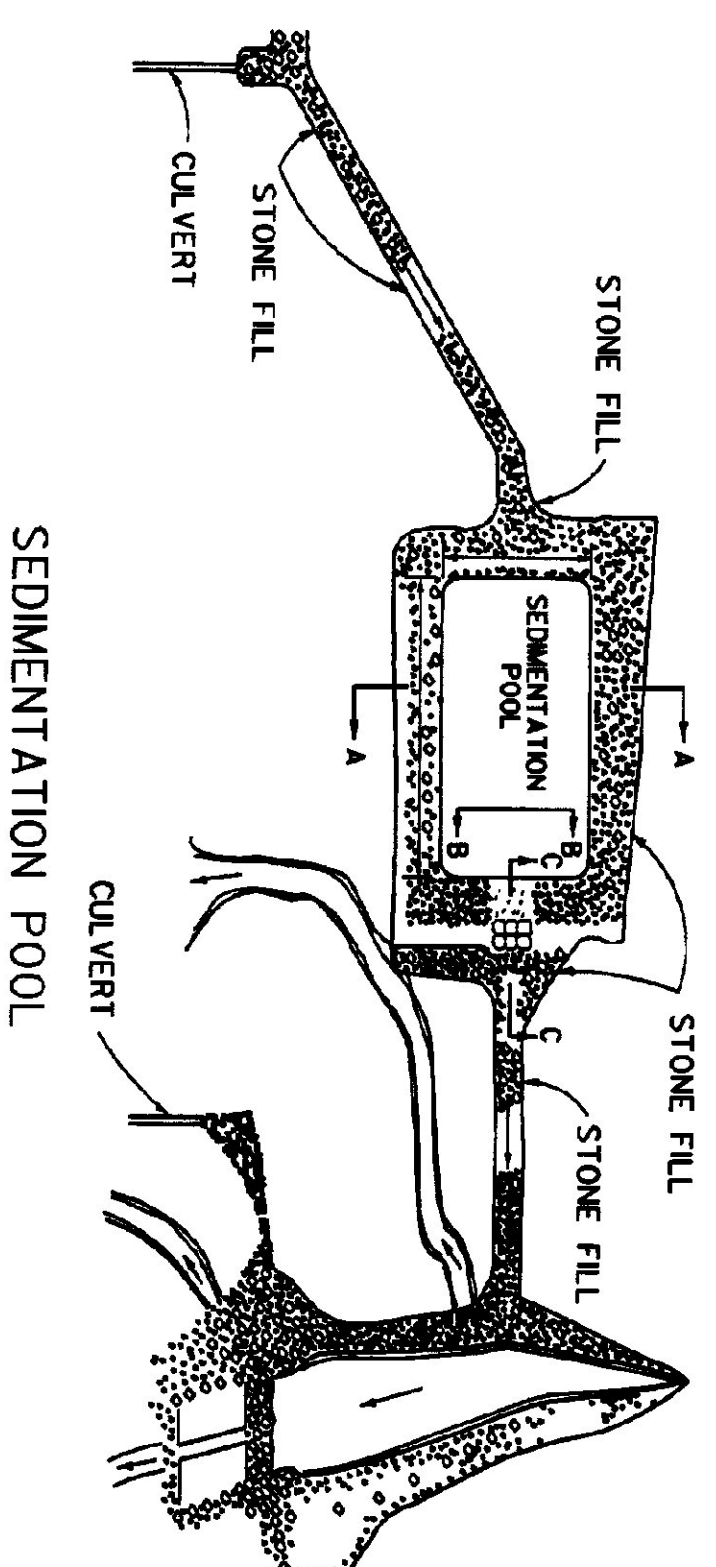
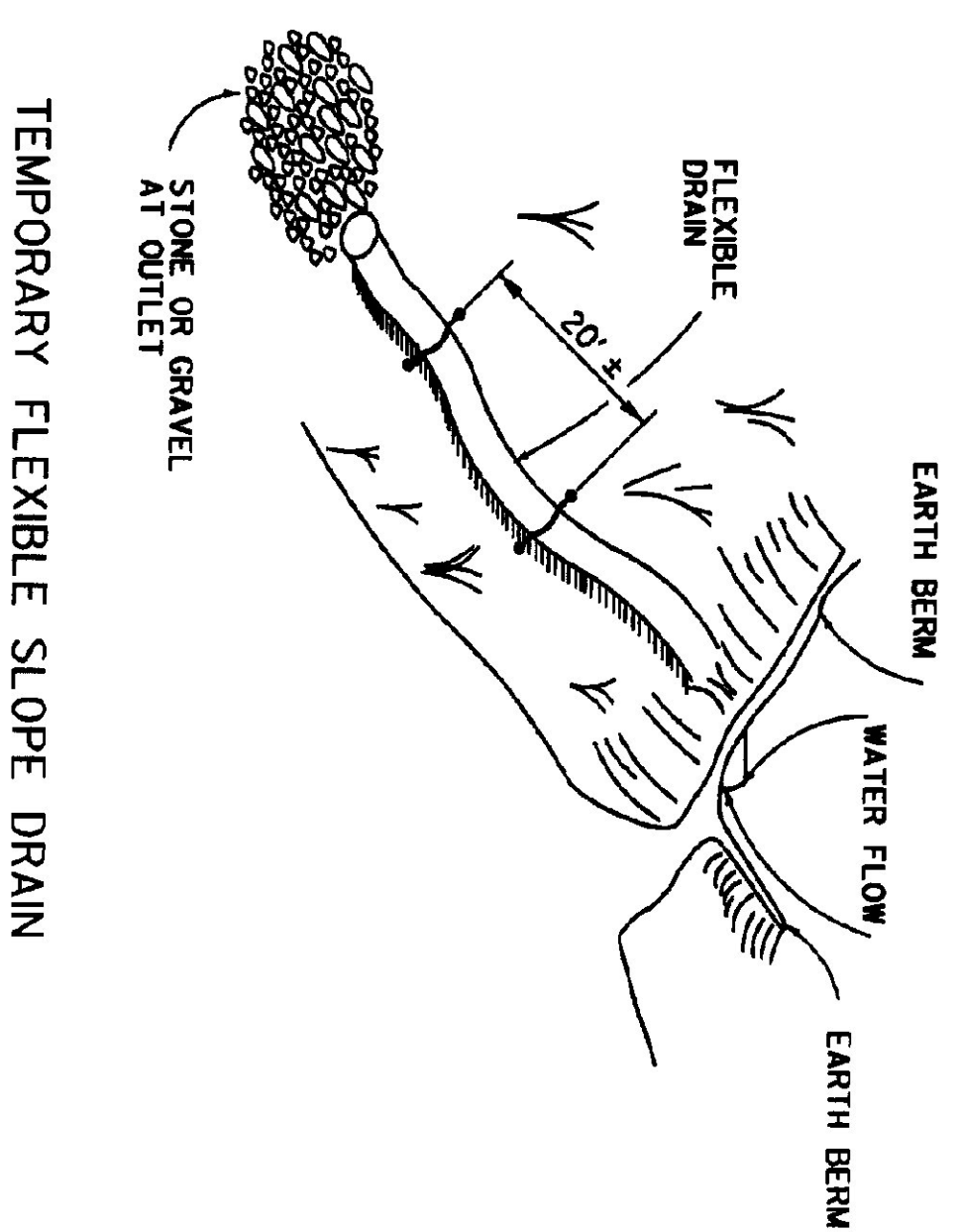
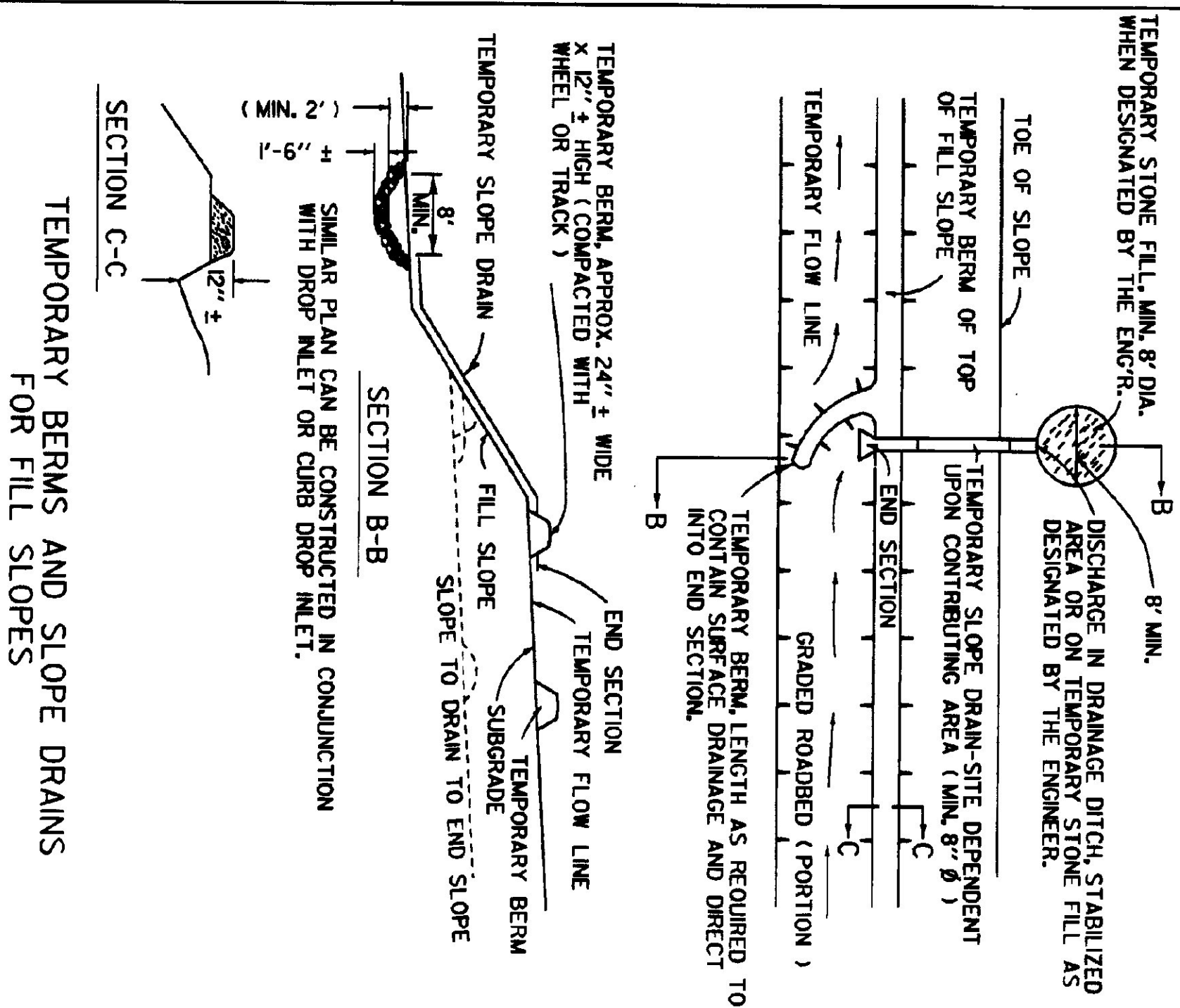
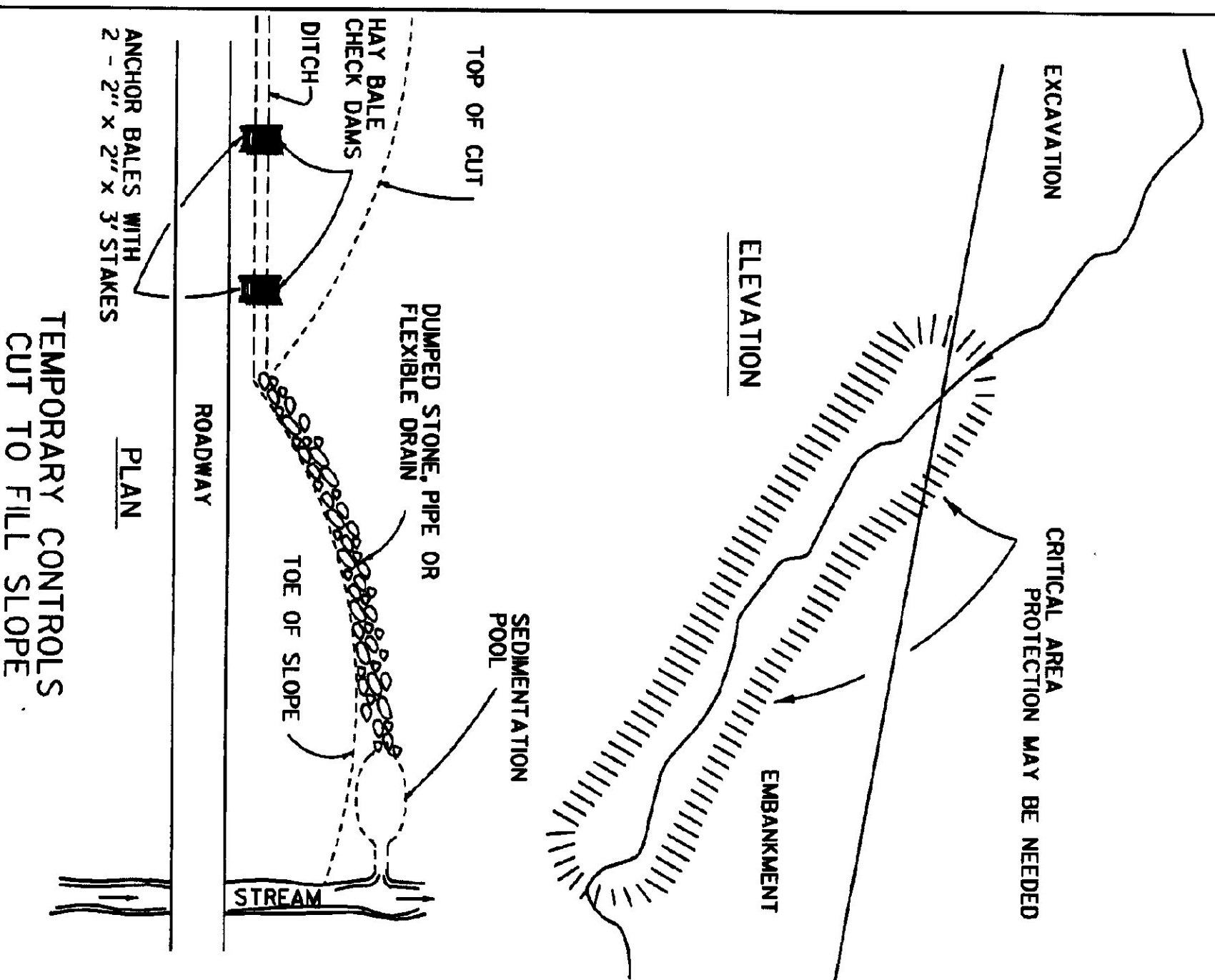
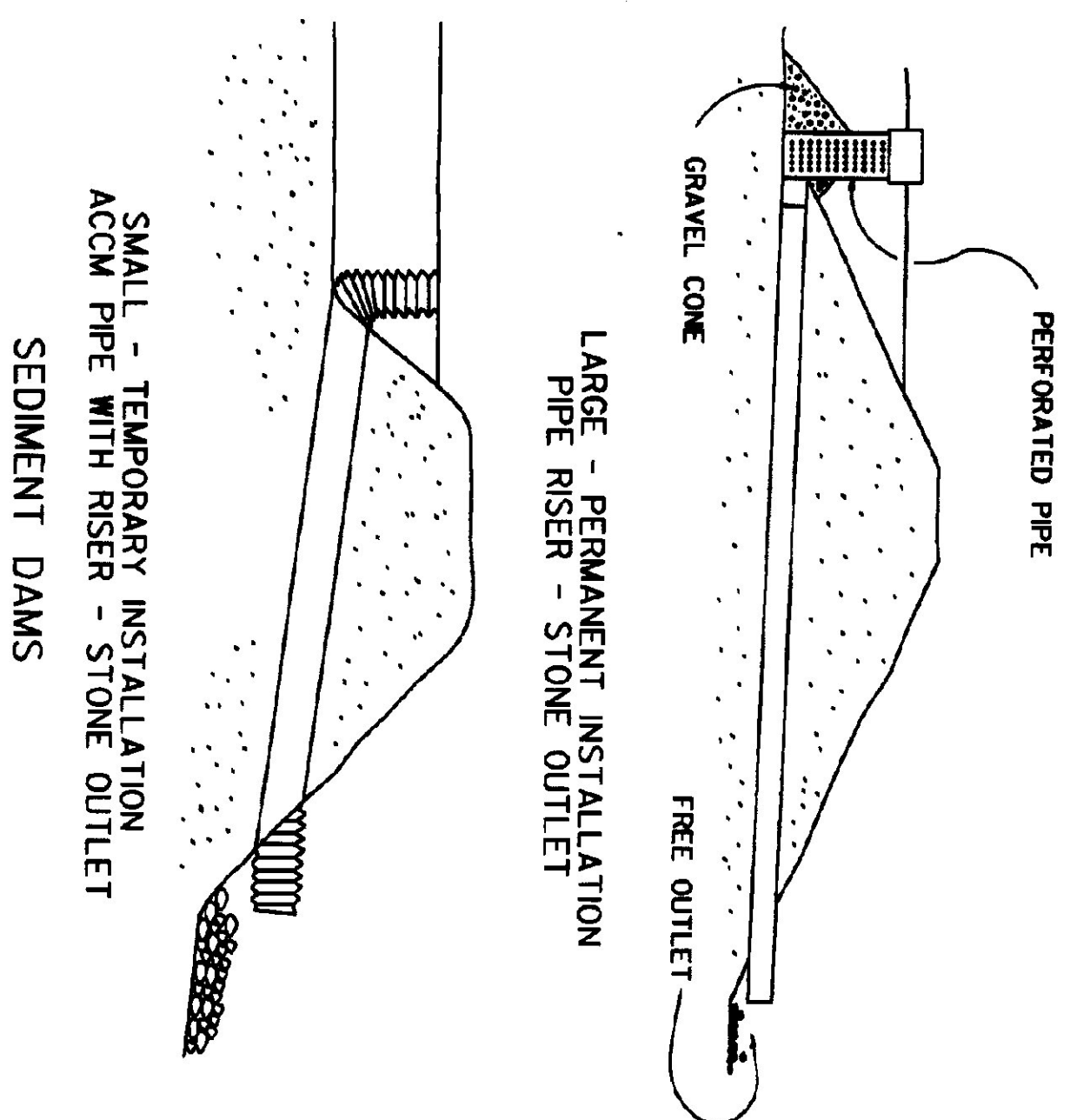
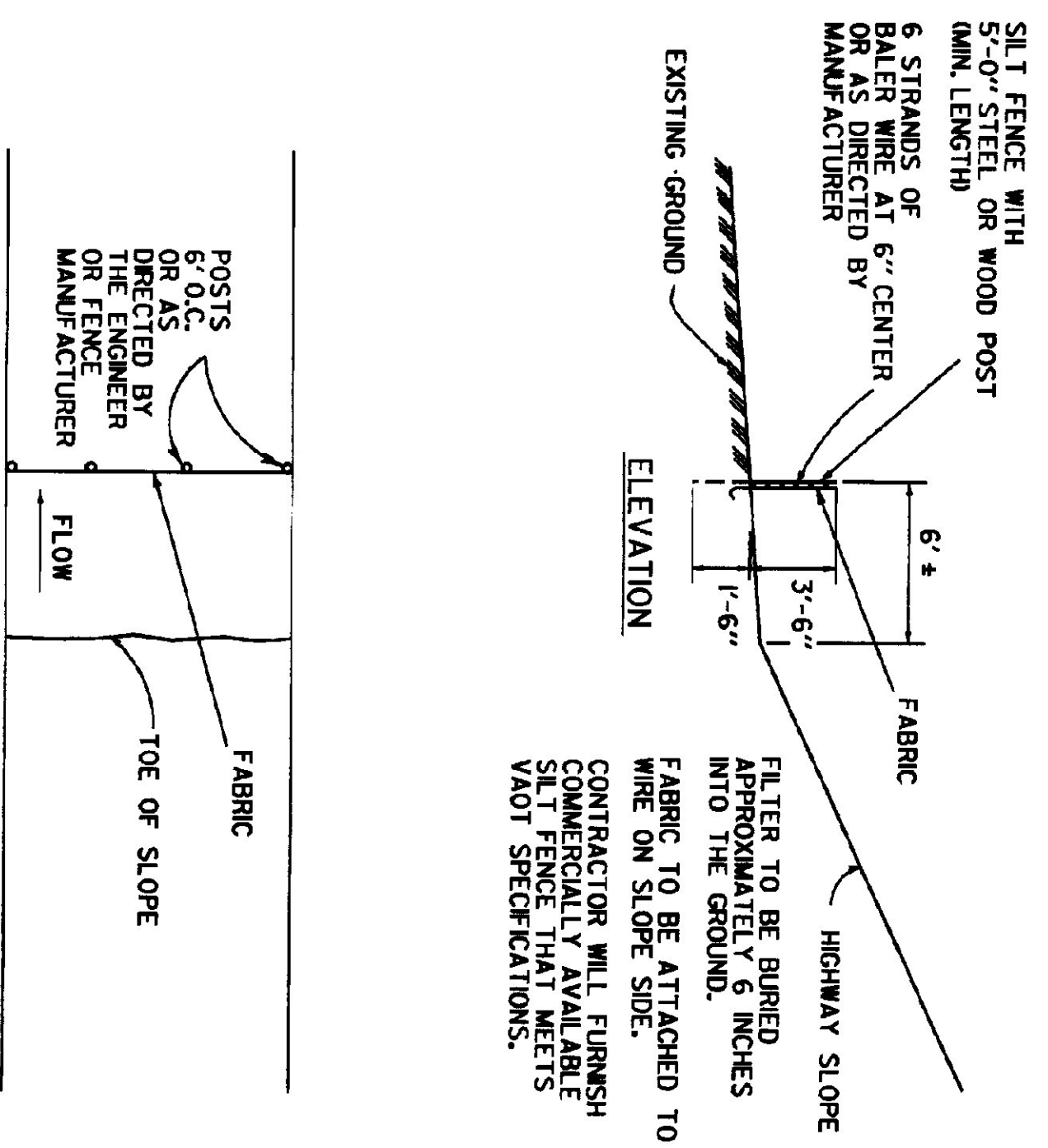
2" BITUMINOUS CONCRETE APPLIED IN TWO COURSES.  
 6" DEPTH OF GRAVEL OR SAND IF DIRECTED BY THE ENGINEER.

PORTLAND CEMENT CONCRETE GUTTER



TREATED GUTTERS





REVISIONS AND CORRECTIONS

JUL. 5, 1972 - ORIGINAL APPROVAL

JUN. 14, 1973 - SEDIMENT TRAPS REMOVED FROM TEMPORARY BERMS & SLOPE DRAINS FOR FILL SLOPES

FEB. 26, 1976 - SILT FENCE ADDED

DEC. 7, 1976 - HAY BALE ANCHOR NOTE ADDED

JUN. 1, 1994 - SILT FENCE NOTES AND DIMENSIONS CHANGED

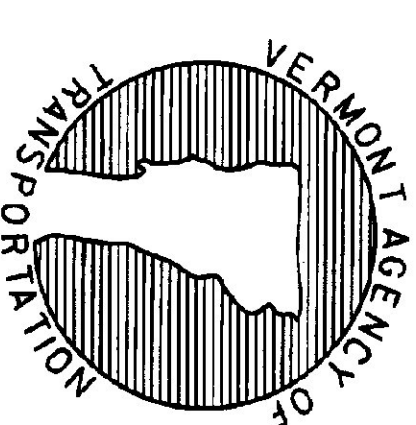
APPROVED

APPROVED FOR THIS PROJECT AND/OR DESIGN IMPLEMENTATION. FINAL FINAL APPROVAL PENING.

Director of Engineering

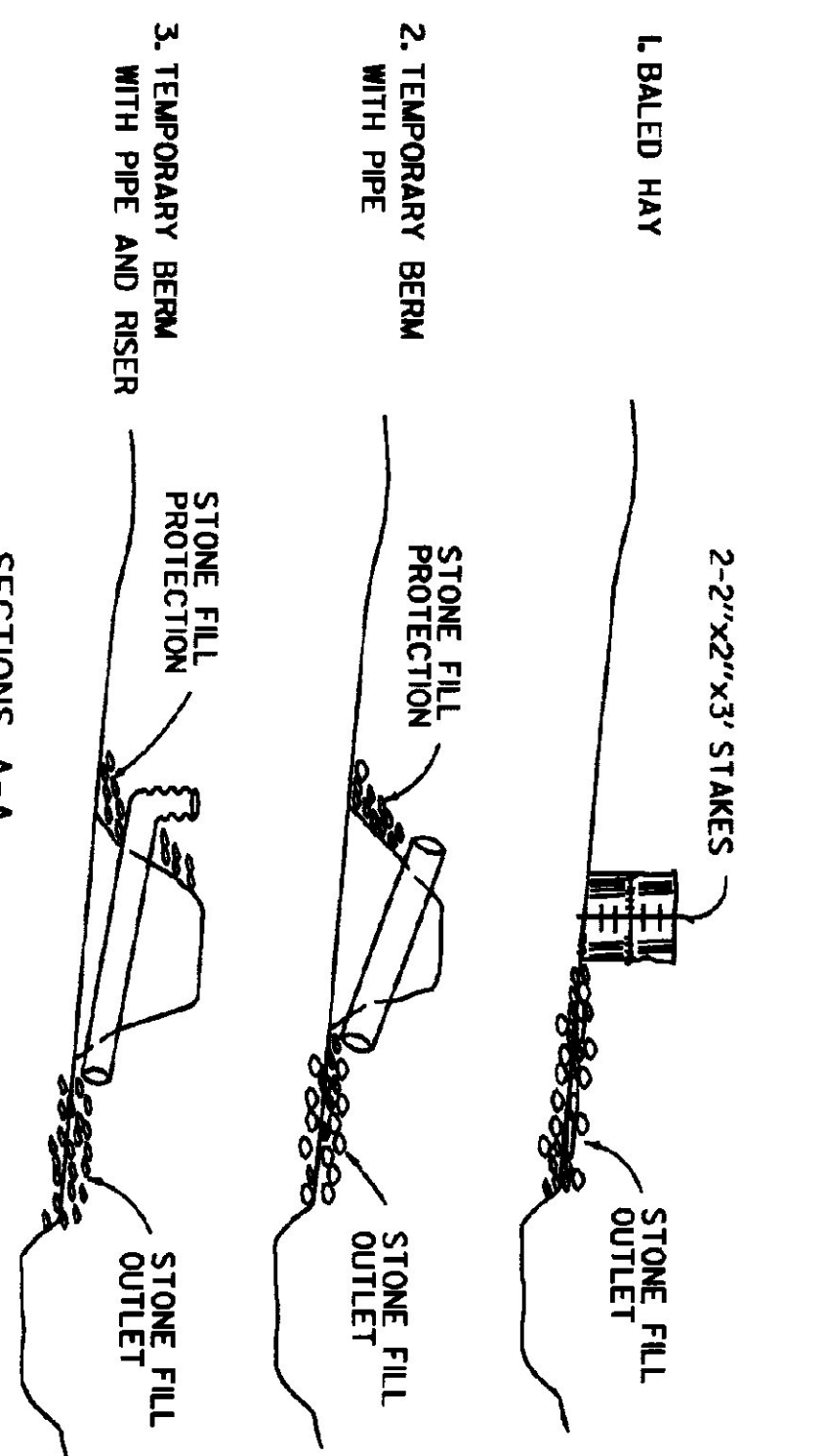
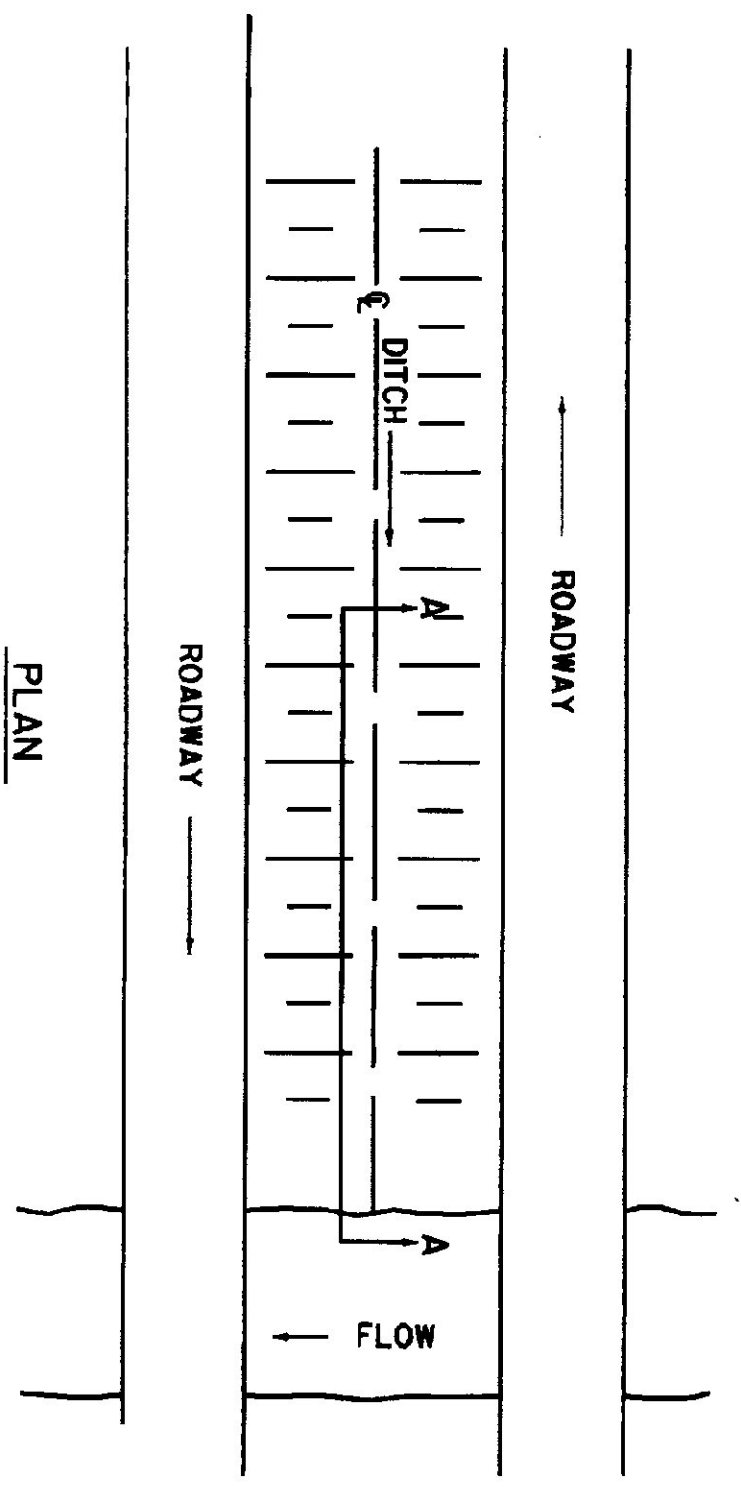
Design Engineer

# TEMPORARY EROSION CONTROL DETAILS

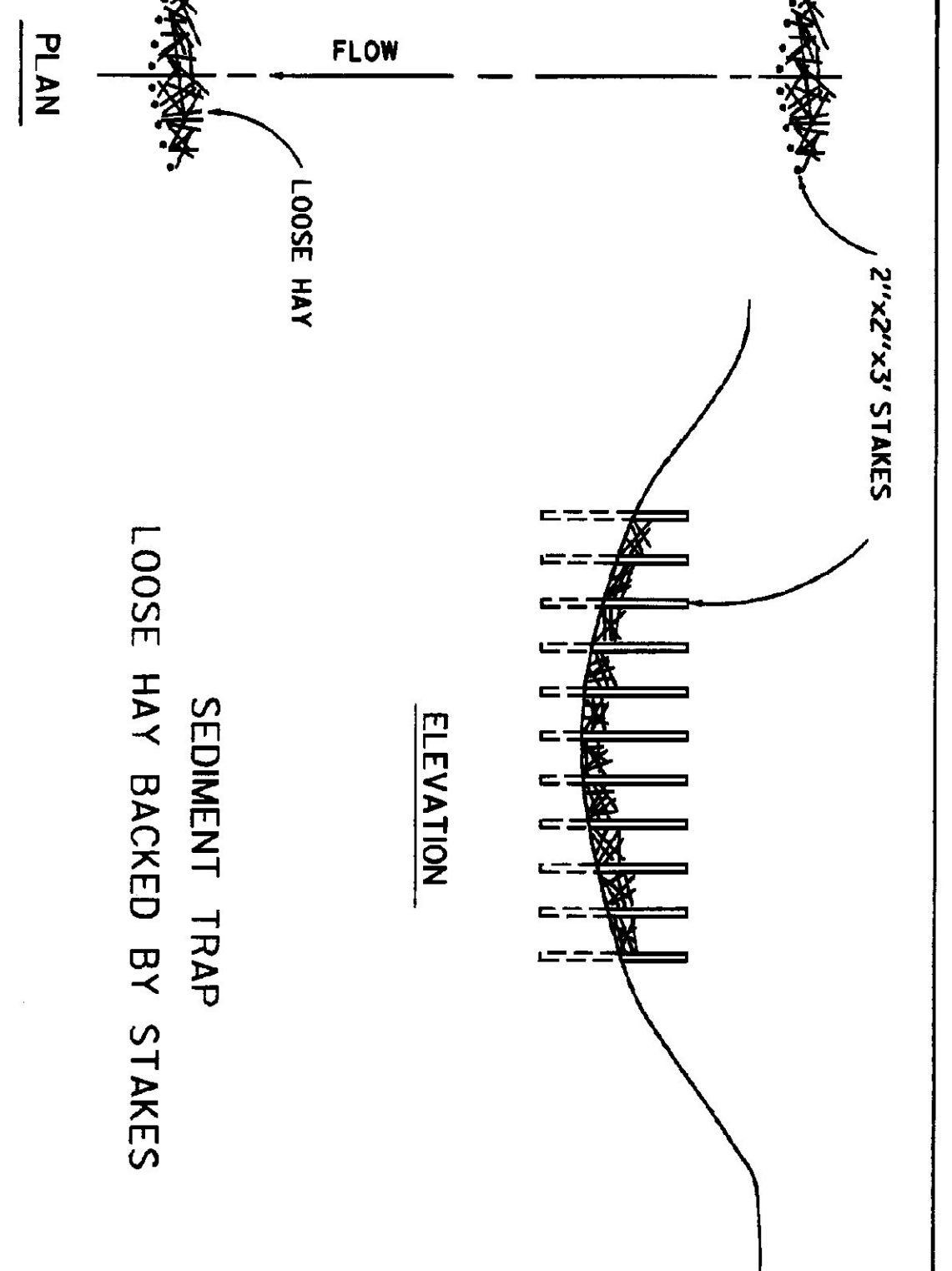


STANDARD

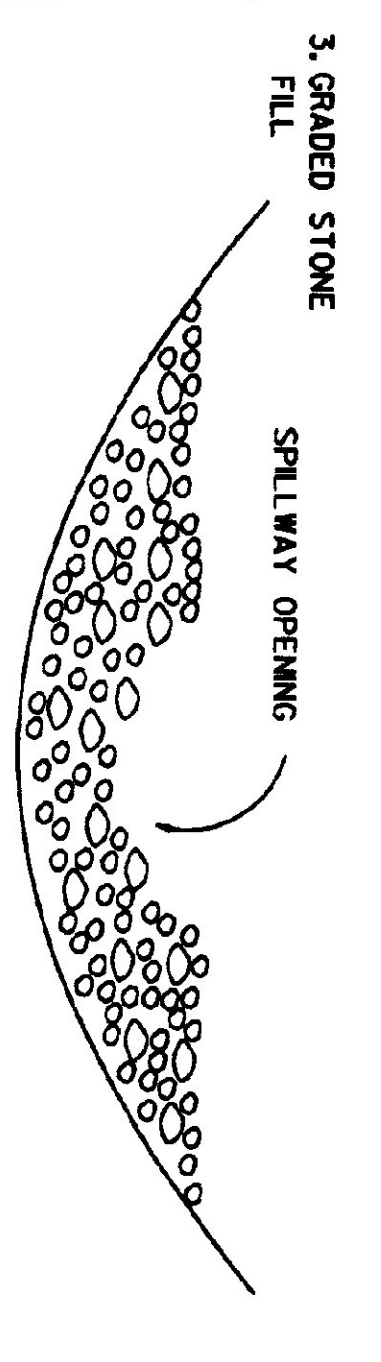
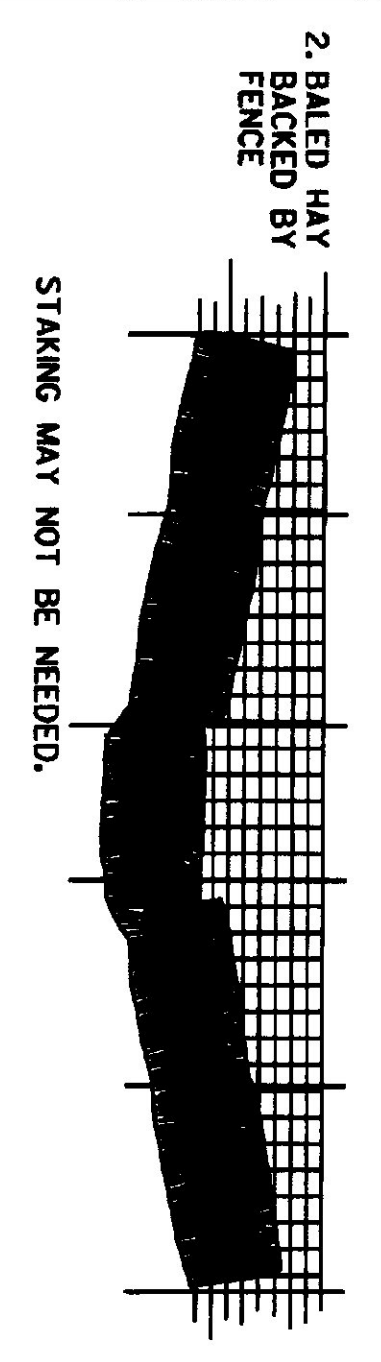
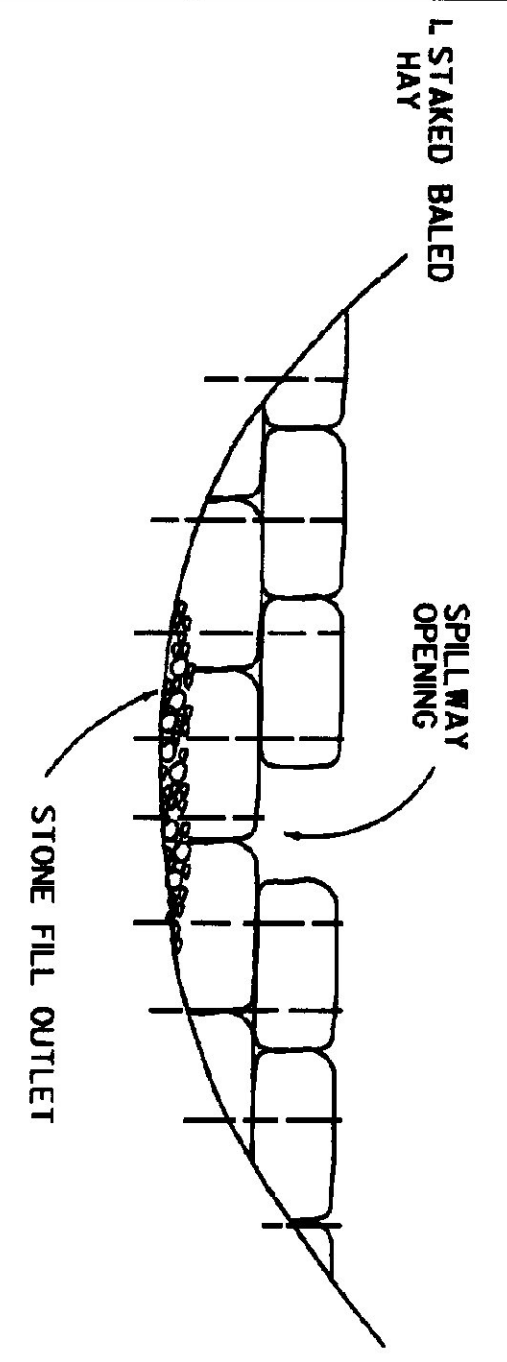
T-1



SECTIONS A-A  
PROTECTION AT STREAM CROSSING  
MEDIAN AND SIDE DITCHES

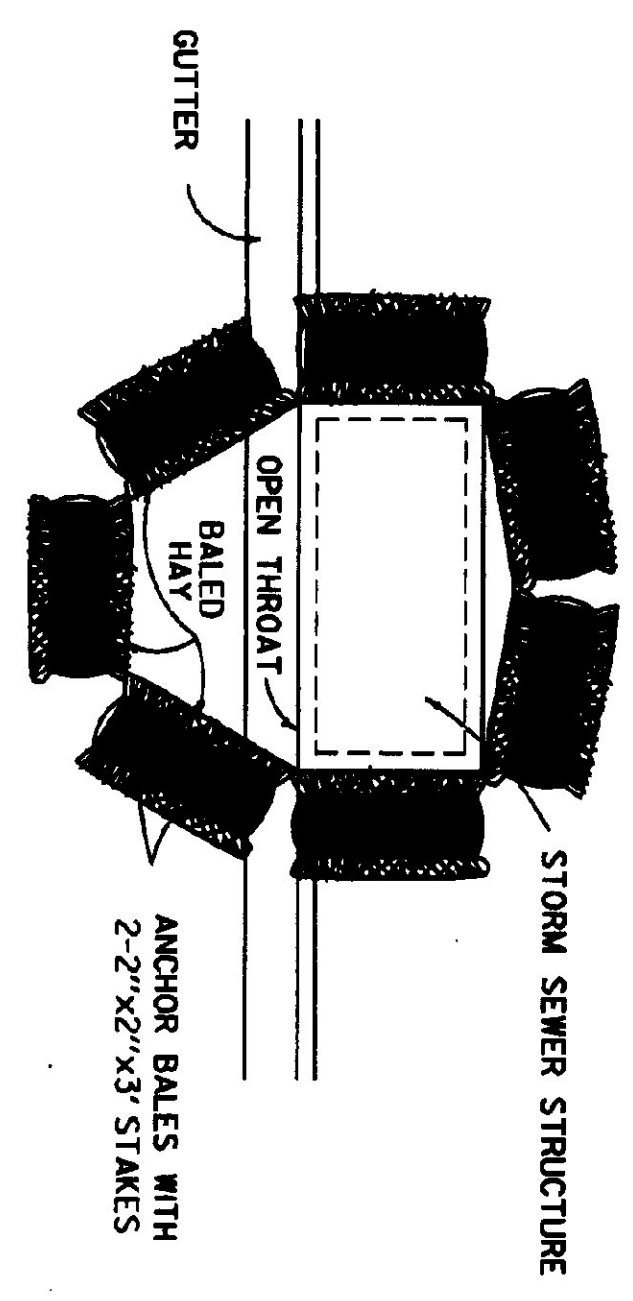


SEDIMENT TRAP  
LOOSE HAY BACKED BY STAKES

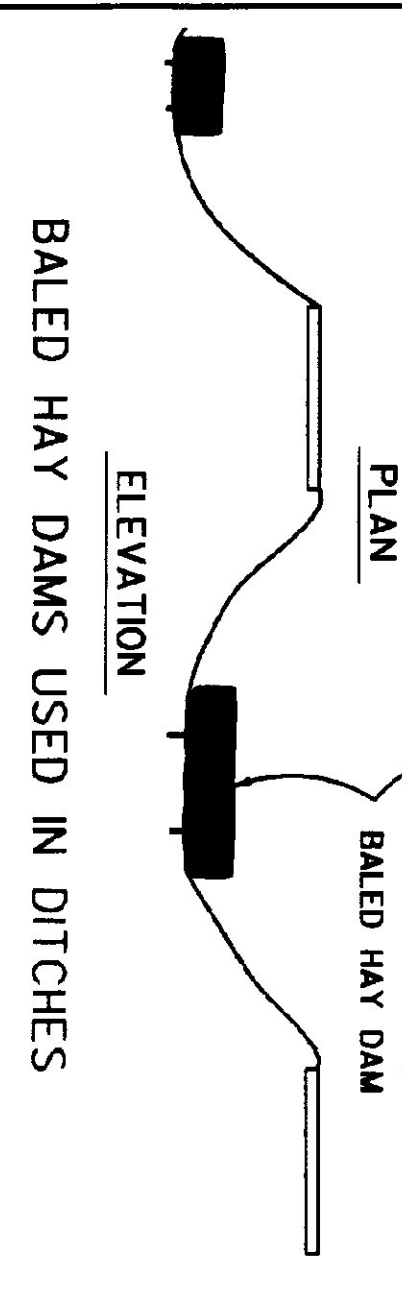
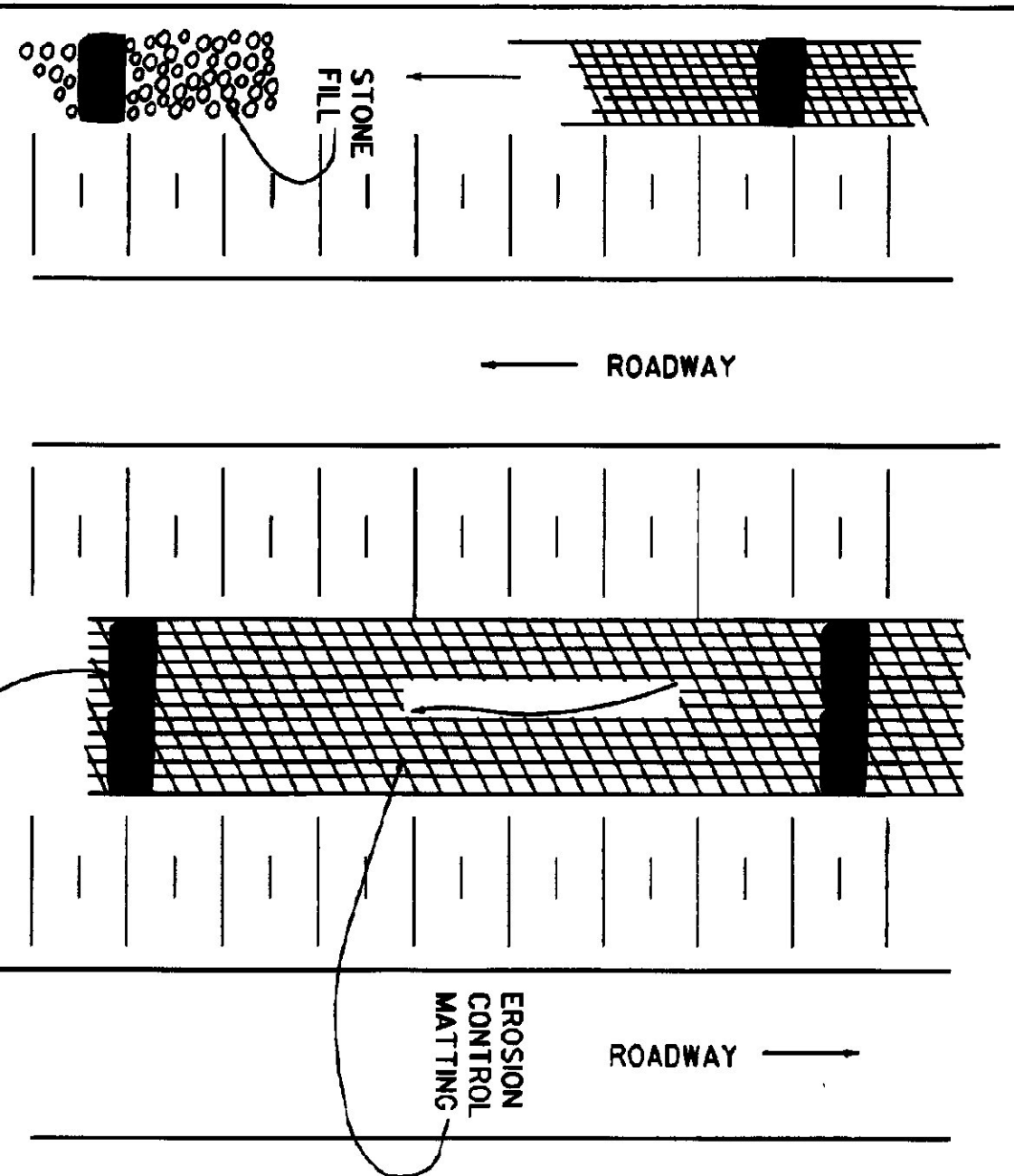


TYPES OF TEMPORARY DAMS  
ELEVATIONS

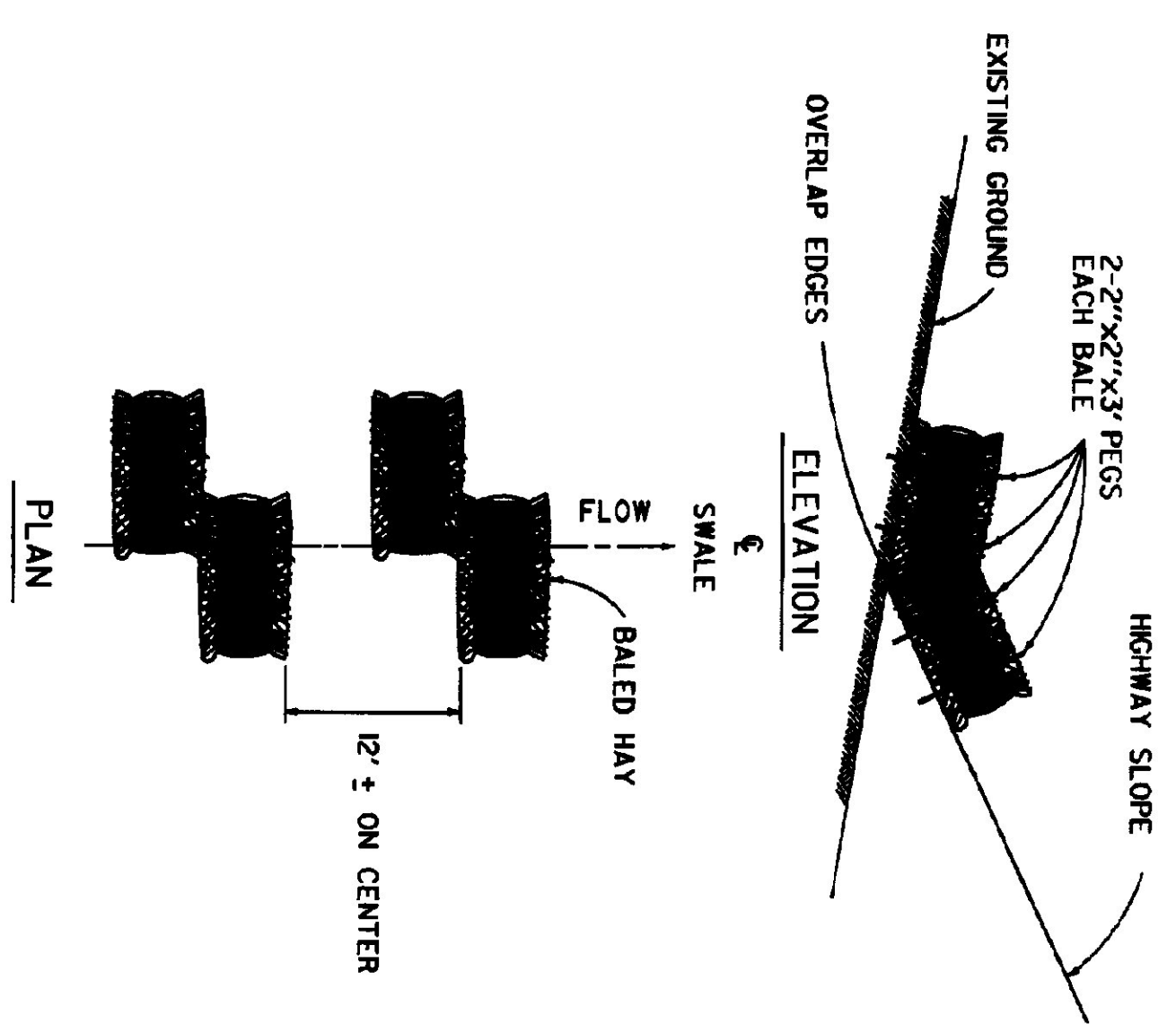
DAM SHOULD EXTEND FAR ENOUGH UP DITCH SIDE SLOPES TO EFFECTIVELY POND THE RUNOFF AND PREVENT EROSION AND WASHOUT.



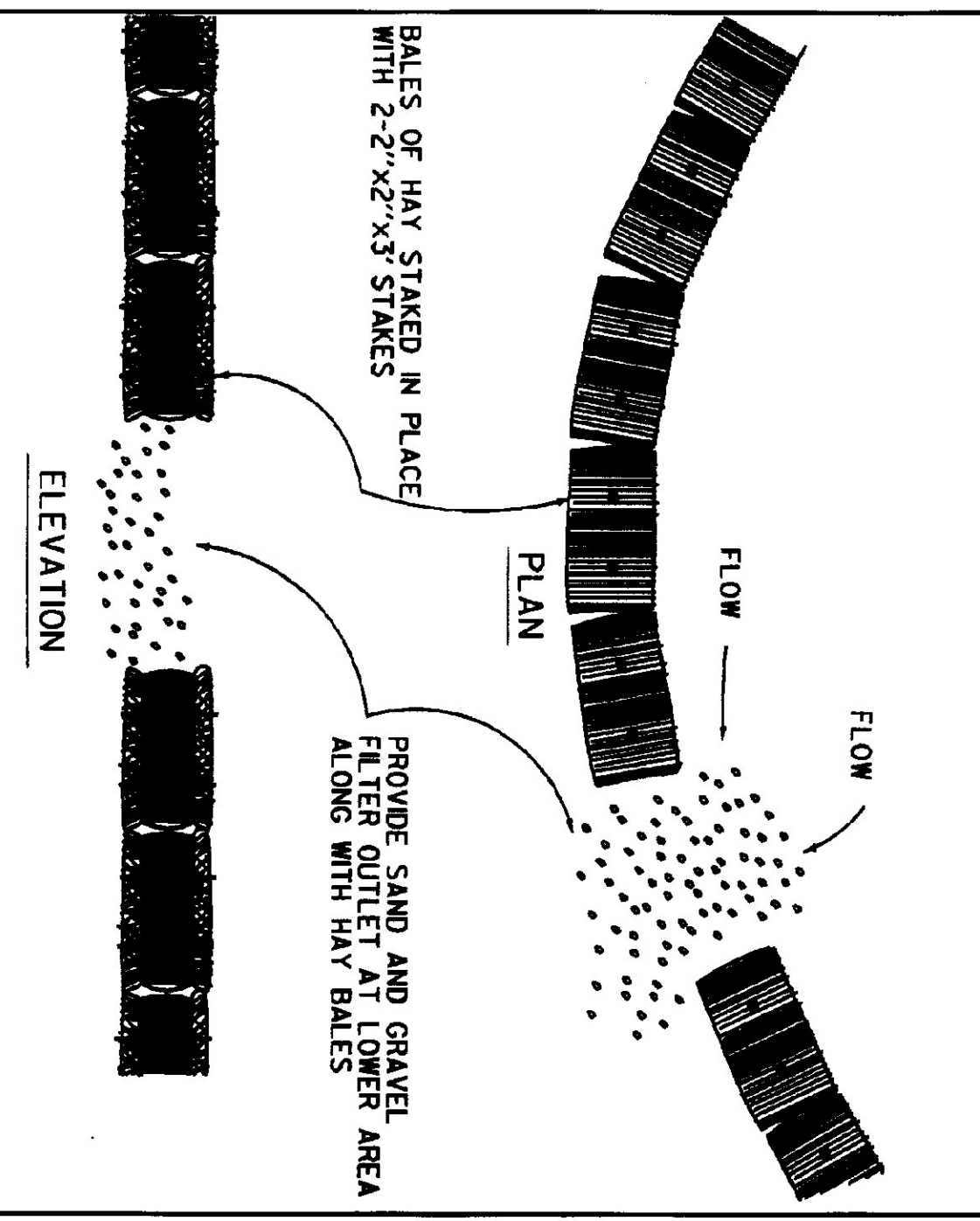
INLET PROTECTION  
TEMPORARY BARRIER - HAY BALES



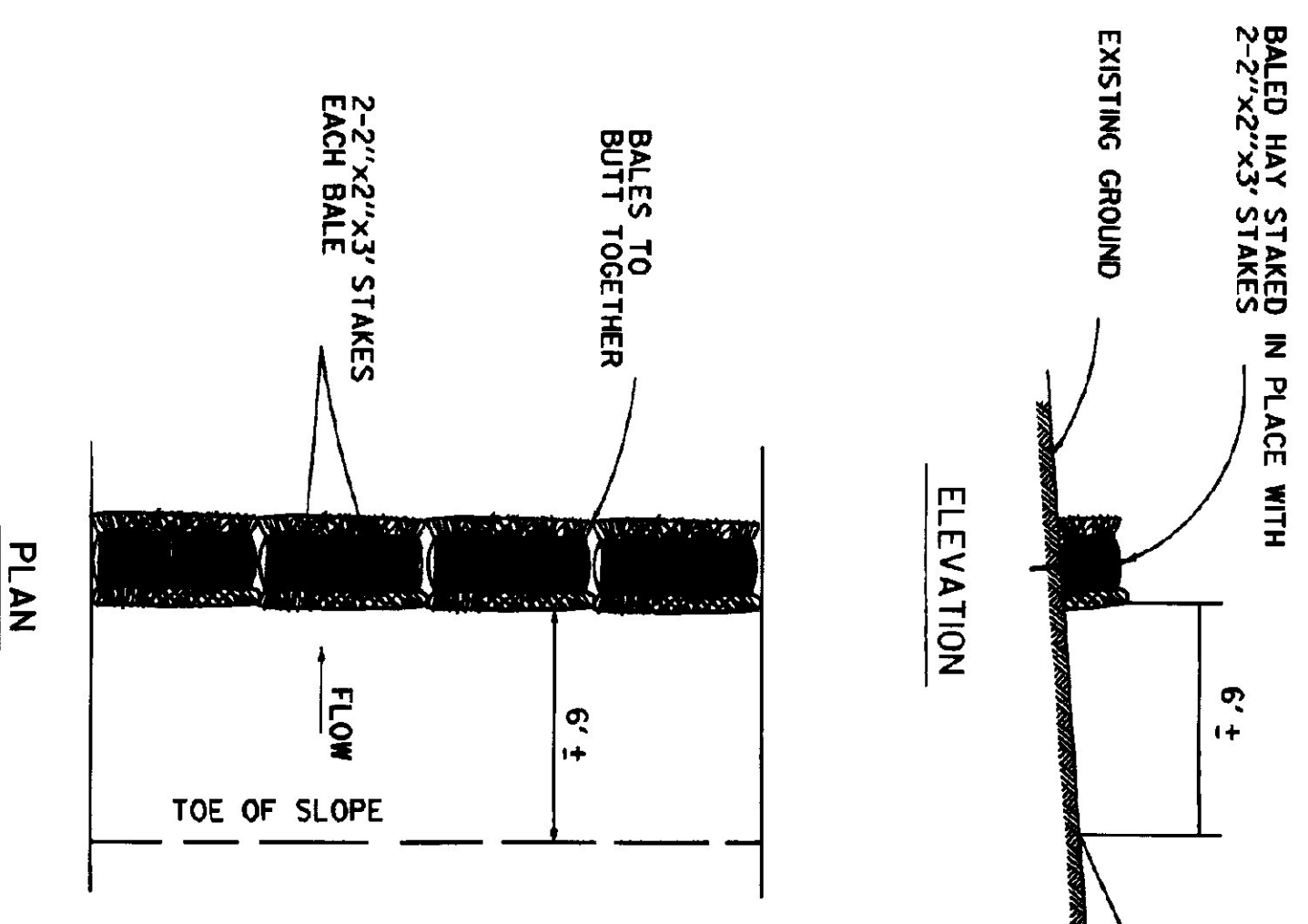
BALED HAY DAMS USED IN DITCHES



TO BE USED IN LOCATIONS WHERE THE EXISTING GROUND SLOPES IN TOWARD THE EMBANKMENT. BALES WILL BE ALLOWED TO ROT IN PLACE.  
BALED HAY EROSION CHECKS



BALED HAY DAMS ALONG TOE OF SLOPE



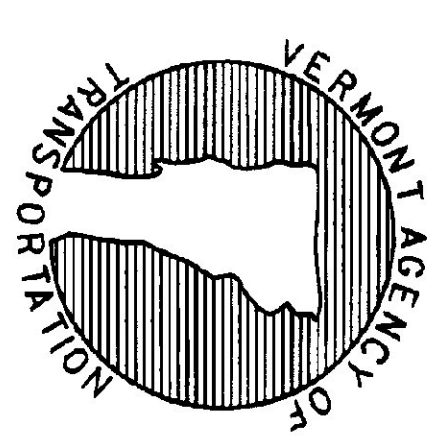
TO BE USED WHERE THE EXISTING GROUND SLOPES AWAY FROM THE HIGHWAY EMBANKMENT.  
BALED HAY EROSION CHECKS

REVISIONS AND CORRECTIONS  
JUL. 5, 1972 - ORIGINAL APPROVAL  
JUNE 1, 1994 - REISSUED, WITHOUT CHANGE,  
UNDER NEW SIGNATURES.

APPROVED  
APPROVED FOR THIS PROJECT AND FOR REISSUANCE AND FINAL APPROVAL REMAINS:  
DIRECTOR OF ENGINEERING

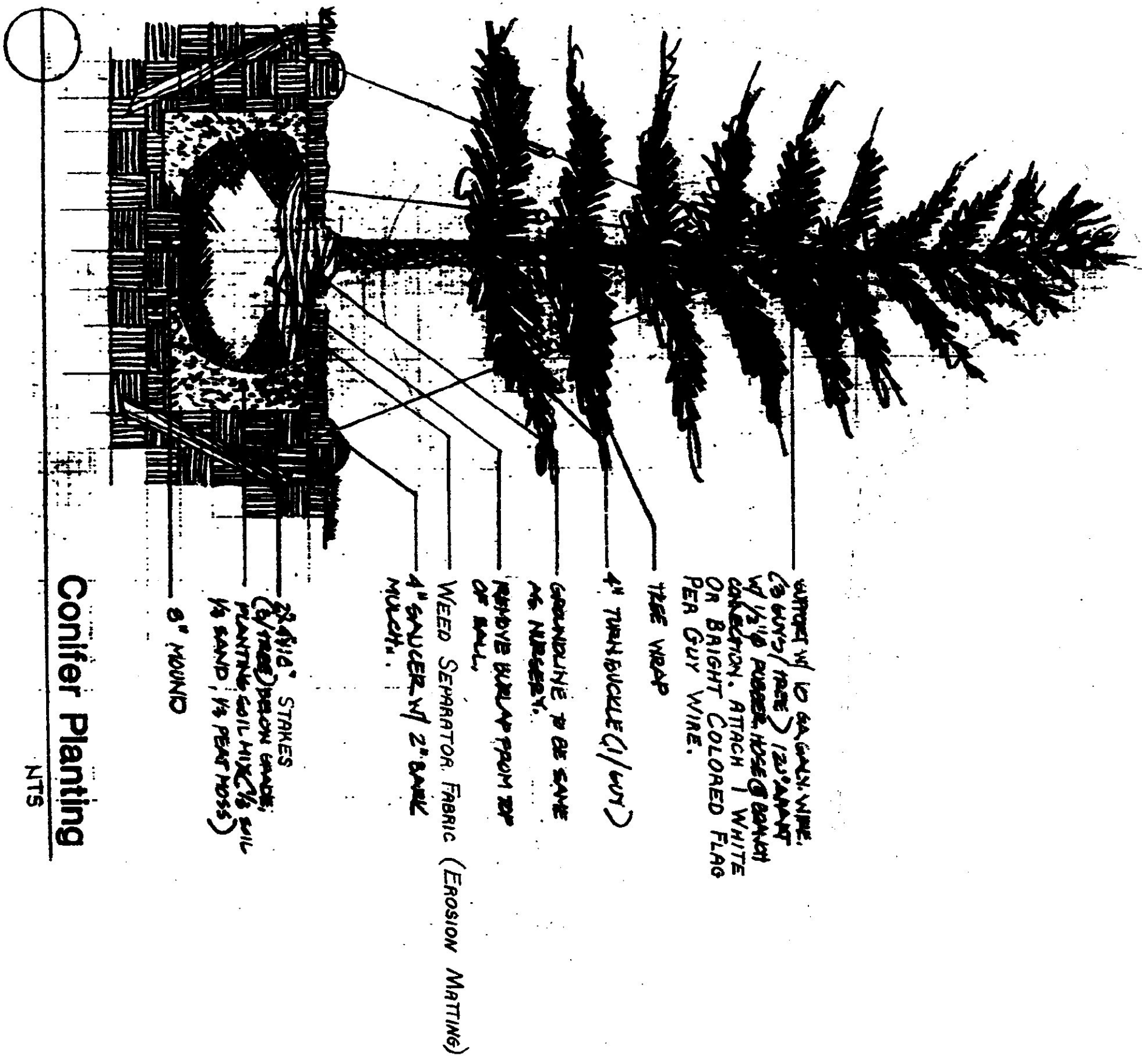
DESIGN ENGINEER

TEMPORARY EROSION CONTROL DETAILS

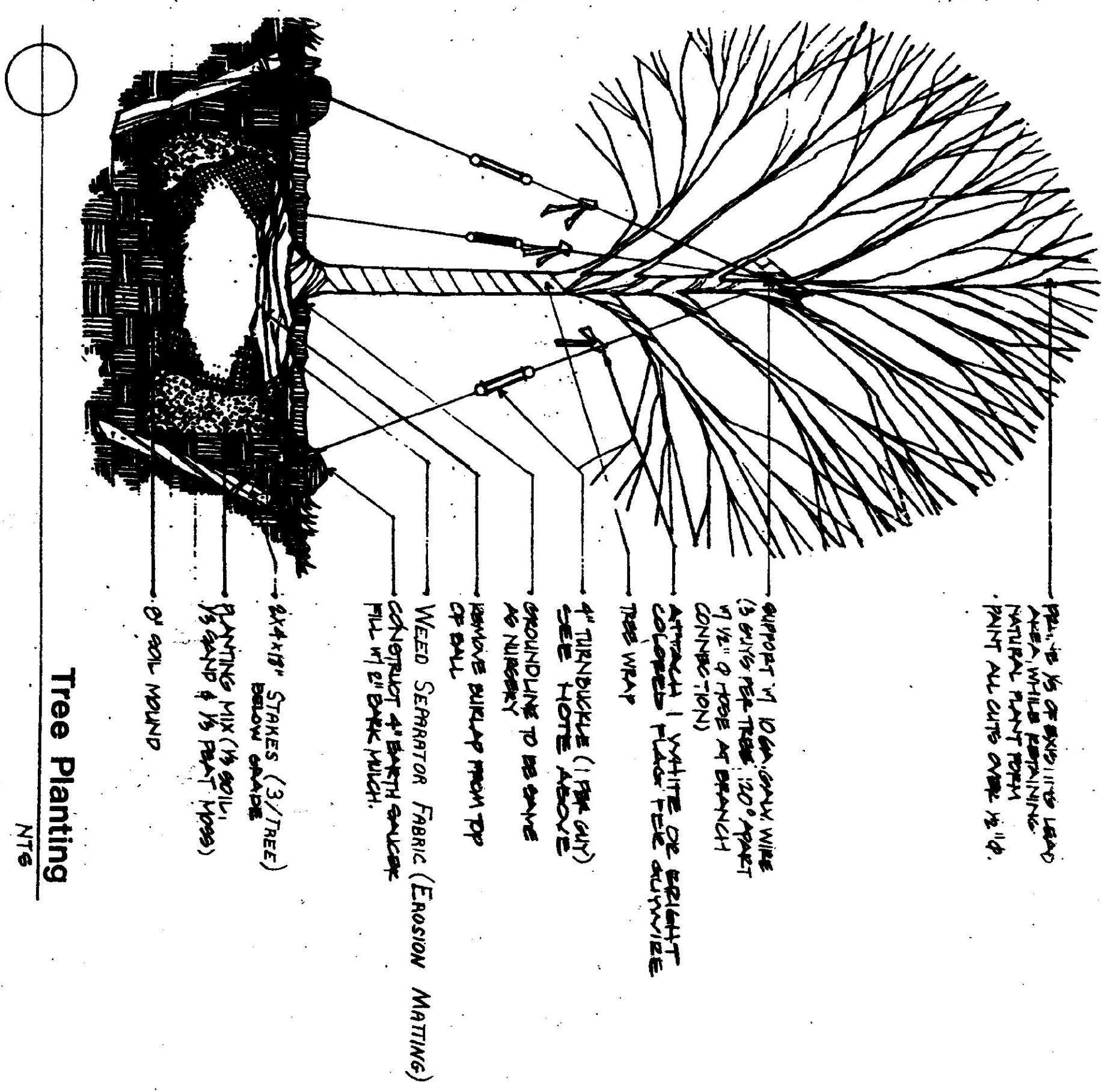
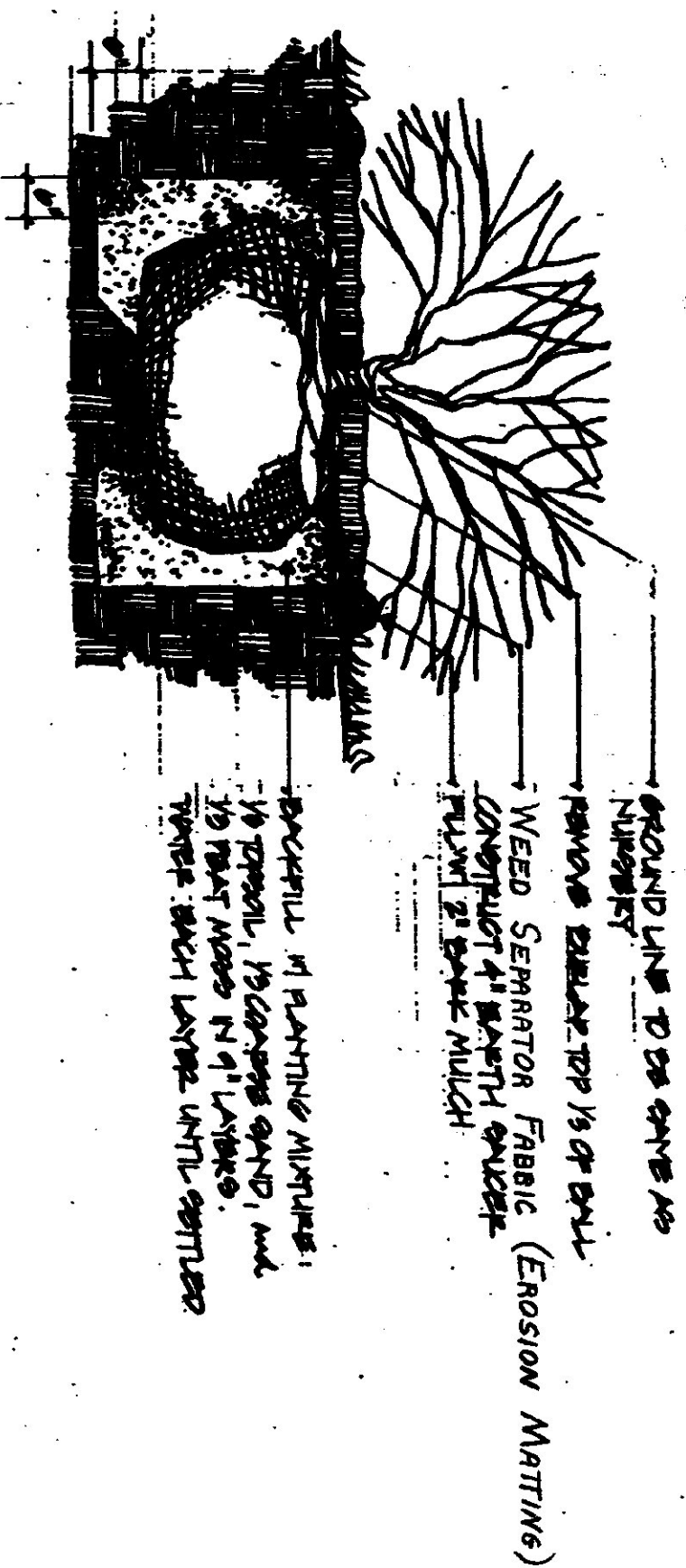


STANDARD  
T-2

# PLANTING DETAILS



\* NOTE: ALL WORK AND MATERIALS SHOWN ON THIS SHEET FOR PLANTING TO BE INCLUDED IN THE BID PRICE FOR EACH PLANTING ITEM.



LEAD: COULD BE 1/2" THICK  
 LEAD OR 1/4" THICK  
 LEAD OR 1/8" THICK  
 LEAD OR 1/16" THICK  
 LEAD OR 1/32" THICK  
 LEAD OR 1/64" THICK  
 LEAD OR 1/128" THICK  
 LEAD OR 1/256" THICK  
 LEAD OR 1/512" THICK  
 LEAD OR 1/1024" THICK  
 LEAD OR 1/2048" THICK  
 LEAD OR 1/4096" THICK  
 LEAD OR 1/8192" THICK  
 LEAD OR 1/16384" THICK  
 LEAD OR 1/32768" THICK  
 LEAD OR 1/65536" THICK  
 LEAD OR 1/131072" THICK  
 LEAD OR 1/262144" THICK  
 LEAD OR 1/524288" THICK  
 LEAD OR 1/1048576" THICK  
 LEAD OR 1/2097152" THICK  
 LEAD OR 1/4194304" THICK  
 LEAD OR 1/8388608" THICK  
 LEAD OR 1/16777216" THICK  
 LEAD OR 1/33554432" THICK  
 LEAD OR 1/67108864" THICK  
 LEAD OR 1/134217728" THICK  
 LEAD OR 1/268435456" THICK  
 LEAD OR 1/536870912" THICK  
 LEAD OR 1/1073741824" THICK  
 LEAD OR 1/2147483648" THICK  
 LEAD OR 1/4294967296" THICK  
 LEAD OR 1/8589934592" THICK  
 LEAD OR 1/17179869184" THICK  
 LEAD OR 1/34359738368" THICK  
 LEAD OR 1/68719476736" THICK  
 LEAD OR 1/137438953472" THICK  
 LEAD OR 1/274877906944" THICK  
 LEAD OR 1/549755813888" THICK  
 LEAD OR 1/1099511627776" THICK  
 LEAD OR 1/2199023255552" THICK  
 LEAD OR 1/4398046511104" THICK  
 LEAD OR 1/8796093022208" THICK  
 LEAD OR 1/17592186044416" THICK  
 LEAD OR 1/35184372088832" THICK  
 LEAD OR 1/70368744177664" THICK  
 LEAD OR 1/140737488355328" THICK  
 LEAD OR 1/281474976710656" THICK  
 LEAD OR 1/562949953421312" THICK  
 LEAD OR 1/1125899906842624" THICK  
 LEAD OR 1/2251799813685248" THICK  
 LEAD OR 1/4503599627370496" THICK  
 LEAD OR 1/9007199254740992" THICK  
 LEAD OR 1/18014398509481984" THICK  
 LEAD OR 1/36028797018963968" THICK  
 LEAD OR 1/72057594037927936" THICK  
 LEAD OR 1/144115188075855872" THICK  
 LEAD OR 1/288230376151711744" THICK  
 LEAD OR 1/576460752303423488" THICK  
 LEAD OR 1/1152921504606846976" THICK  
 LEAD OR 1/2305843009213693952" THICK  
 LEAD OR 1/4611686018427387904" THICK  
 LEAD OR 1/9223372036854775808" THICK  
 LEAD OR 1/18446744073709551616" THICK  
 LEAD OR 1/36893488147419103232" THICK  
 LEAD OR 1/73786976294838206464" THICK  
 LEAD OR 1/147573952589676412928" THICK  
 LEAD OR 1/295147905179352825856" THICK  
 LEAD OR 1/590295810358705651712" THICK  
 LEAD OR 1/1180591620717411303424" THICK  
 LEAD OR 1/2361183241434822606848" THICK  
 LEAD OR 1/4722366482869645213696" THICK  
 LEAD OR 1/9444732965739290427392" THICK  
 LEAD OR 1/18889465931478580854784" THICK  
 LEAD OR 1/37778931862957161709568" THICK  
 LEAD OR 1/75557863725914323419136" THICK  
 LEAD OR 1/151115727451828646838272" THICK  
 LEAD OR 1/302231454903657293676544" THICK  
 LEAD OR 1/604462909807314587353088" THICK  
 LEAD OR 1/1208925819614629174706176" THICK  
 LEAD OR 1/2417851639229258349412352" THICK  
 LEAD OR 1/4835703278458516698824704" THICK  
 LEAD OR 1/9671406556917033397649408" THICK  
 LEAD OR 1/19342813113834066795298816" THICK  
 LEAD OR 1/38685626227668133590597632" THICK  
 LEAD OR 1/77371252455336267181195264" THICK  
 LEAD OR 1/154742504910672534362390528" THICK  
 LEAD OR 1/309485009821345068724781056" THICK  
 LEAD OR 1/618970019642690137449562112" THICK  
 LEAD OR 1/1237940039285380274899244224" THICK  
 LEAD OR 1/2475880078570760549798488448" THICK  
 LEAD OR 1/4951760157141521099596976896" THICK  
 LEAD OR 1/9903520314283042199193953792" THICK  
 LEAD OR 1/19807040628566084398387907584" THICK  
 LEAD OR 1/39614081257132168796775815168" THICK  
 LEAD OR 1/79228162514264337593551630336" THICK  
 LEAD OR 1/158456325028528675187103260672" THICK  
 LEAD OR 1/316912650057057350374206521344" THICK  
 LEAD OR 1/633825300114114700748413042688" THICK  
 LEAD OR 1/1267650600228229401496826085376" THICK  
 LEAD OR 1/2535301200456458802993652170752" THICK  
 LEAD OR 1/5070602400912917605987304341504" THICK  
 LEAD OR 1/10141204801825835211974608683008" THICK  
 LEAD OR 1/20282409603651670423949217366016" THICK  
 LEAD OR 1/40564819207303340847898434732032" THICK  
 LEAD OR 1/81129638414606681695797869464064" THICK  
 LEAD OR 1/162259276829213363911597389328128" THICK  
 LEAD OR 1/324518553658426727823194778656256" THICK  
 LEAD OR 1/649037107316853455646389557312512" THICK  
 LEAD OR 1/1298074214637066911292778114625224" THICK  
 LEAD OR 1/2596148429274133822585562293250448" THICK  
 LEAD OR 1/519229685854826764517112458650096" THICK  
 LEAD OR 1/1038459371709653529034249173301152" THICK  
 LEAD OR 1/2076918743419307058068498346602304" THICK  
 LEAD OR 1/4153837486838614116136996693324608" THICK  
 LEAD OR 1/8307674973677228232273993386649216" THICK  
 LEAD OR 1/16615349947354456465547967733294336" THICK  
 LEAD OR 1/33230699894708912931109935466588672" THICK  
 LEAD OR 1/66461399789417825862219870933177344" THICK  
 LEAD OR 1/13292279957883565172443974186634688" THICK  
 LEAD OR 1/26584559915767130344887948373269376" THICK  
 LEAD OR 1/53169119831534260689775896746538752" THICK  
 LEAD OR 1/10633823966306852137955179349307504" THICK  
 LEAD OR 1/21267647932613704275910358698615008" THICK  
 LEAD OR 1/42535295865227408551820717397230016" THICK  
 LEAD OR 1/8507059173045481710364143479446032" THICK  
 LEAD OR 1/17014118346090963420728286958920656" THICK  
 LEAD OR 1/34028236692181926841456573917841312" THICK  
 LEAD OR 1/68056473384363853682913147835682624" THICK  
 LEAD OR 1/136112946768727707365826295671365248" THICK  
 LEAD OR 1/272225893537455414731652591342748928" THICK  
 LEAD OR 1/544451787074910829463305182685497952" THICK  
 LEAD OR 1/108890357414982165892661035377099584" THICK  
 LEAD OR 1/217780714829964331785322070754199168" THICK  
 LEAD OR 1/435561429659928663570644041508398336" THICK  
 LEAD OR 1/871122859319857327141288083016696672" THICK  
 LEAD OR 1/174224571823971455428257616603333344" THICK  
 LEAD OR 1/348449143647942910856515233206666688" THICK  
 LEAD OR 1/696898287295885821713130466413333376" THICK  
 LEAD OR 1/139379657459177164342626093282666752" THICK  
 LEAD OR 1/278759314918354328685252186565333504" THICK  
 LEAD OR 1/557518629836708657370504373130667008" THICK  
 LEAD OR 1/1115037259673417314741008746261334016" THICK  
 LEAD OR 1/2230074519346834629482017492522668032" THICK  
 LEAD OR 1/4460149038693669258964034985045336064" THICK  
 LEAD OR 1/8920298077387338517928069970090672128" THICK  
 LEAD OR 1/17840596154774677035856139540181344512" THICK  
 LEAD OR 1/35681192309549354071771279080362688224" THICK  
 LEAD OR 1/71362384619098708143542558160725364448" THICK  
 LEAD OR 1/142724769238197416287085116321446708928" THICK  
 LEAD OR 1/285449538476394832574170232642934179856" THICK  
 LEAD OR 1/570899076952789665148340465285868359712" THICK  
 LEAD OR 1/1141798153905579330296680930571737439424" THICK  
 LEAD OR 1/2283596307811158660593361861143474878848" THICK  
 LEAD OR 1/456719261562231732118672372228749777792" THICK  
 LEAD OR 1/91343852312446346423734474445749955552" THICK  
 LEAD OR 1/182687704624892692847469488911499111008" THICK  
 LEAD OR 1/36537540924978538569493897782298222016" THICK  
 LEAD OR 1/73075081849957077138987795564596444032" THICK  
 LEAD OR 1/146150163699914154277975591129932888064" THICK  
 LEAD OR 1/292300327399828308555951182259865776128" THICK  
 LEAD OR 1/584600654799656617111902364519731552512" THICK  
 LEAD OR 1/11692013095993132342238047290394631105024" THICK  
 LEAD OR 1/2338402619198626468447609458078926210048" THICK  
 LEAD OR 1/4676805238397252936895218916157852420096" THICK  
 LEAD OR 1/9353610476794505873790437832315704840192" THICK  
 LEAD OR 1/18707220953589011747580875664631409688384" THICK  
 LEAD OR 1/3741444190717802349516175132926217777728" THICK  
 LEAD OR 1/7482888381435604699032350265852435555552" THICK  
 LEAD OR 1/14965776762712009398064700531704871111008" THICK  
 LEAD OR 1/2993155352542401879612940106340974222016" THICK  
 LEAD OR 1/5986310705084803759225880212681948444032" THICK  
 LEAD OR 1/1197262141016960751845176042536389688864" THICK  
 LEAD OR 1/2394524282033921503690352085072779377728" THICK  
 LEAD OR 1/47890485640678430073807041701455787555552" THICK  
 LEAD OR 1/9578097128135686014761408340291155111008" THICK  
 LEAD OR 1/1915619425627137202952816680578230222016" THICK  
 LEAD OR 1/3831238851254274405905633361156460444032" THICK  
 LEAD OR 1/766247770250854881181126672231290888864" THICK  
 LEAD OR 1/1532495540501709762362253444625581777728" THICK  
 LEAD OR 1/306499108100341952472450688925117555552" THICK  
 LEAD OR 1/612998216200683904944901377850231111008" THICK  
 LEAD OR 1/122599643240136780988980275570046222016" THICK  
 LEAD OR 1/245199286480273561977960551140092444032" THICK  
 LEAD OR 1/490398572960547123955921102280184888064" THICK  
 LEAD OR 1/980797145921094247911842244560369777128" THICK  
 LEAD OR 1/1961594291842188495823684889120735455552" THICK  
 LEAD OR 1/392318858368437699164736977824147111008" THICK  
 LEAD OR 1/784637716736875398329473955648294222016" THICK  
 LEAD OR 1/1569275433473750796658947111296468444032" THICK  
 LEAD OR 1/313855086694750159331789422259293688864" THICK  
 LEAD OR 1/627710173389500318663578844518587377728" THICK  
 LEAD OR 1/125542034677900063732715778903717555552" THICK  
 LEAD OR 1/25108406935580012746543155780743111008" THICK  
 LEAD OR 1/50216813871160025493086311561486222016" THICK  
 LEAD OR 1/10043362774232005098617262312972444032" THICK  
 LEAD OR 1/2008672554846401019723452462594488864" THICK  
 LEAD OR 1/40173451096928020394469049251889777128" THICK  
 LEAD OR 1/8034690219385604078893809850377955552" THICK  
 LEAD OR 1/1606938037877120815778761970075511008" THICK  
 LEAD OR 1/32138760757542416315575239401510222016" THICK  
 LEAD OR 1/64277521515084832631150488803020444032" THICK  
 LEAD OR 1/12855504303016966526230097760640888864" THICK  
 LEAD OR 1/25711008606033933052460195521281777728" THICK  
 LEAD OR 1/5142201721206786610492039104255355552" THICK  
 LEAD OR 1/10284403442413573220984078208510711008" THICK  
 LEAD OR 1/20568806884827146441968156417021444032" THICK  
 LEAD OR 1/4113761376965429288393631283404288864" THICK  
 LEAD OR 1/82275227539308585767872625668085777128" THICK  
 LEAD OR 1/16455045507861717153574525133717155552" THICK  
 LEAD OR 1/32910091015723434307148450267434311008" THICK  
 LEAD OR 1/65820182031446868614297000534868622016" THICK  
 LEAD OR 1/131640364062893737228590001077372444032" THICK  
 LEAD OR 1/26328072812578747445718000215474488864" THICK  
 LEAD OR 1/526561456251574948914360004315489777128" THICK  
 LEAD OR 1/1053122912503149978288720008637955552" THICK  
 LEAD OR 1/2106245825006299956577440017275911008" THICK  
 LEAD OR 1/42124916500125999131554800345518222016" THICK  
 LEAD OR 1/84249833000251998263109600691036444032" THICK  
 LEAD OR 1/16849966600050399652621920138213777128" THICK  
 LEAD OR 1/3369993320010079930524384027642755552" THICK  
 LEAD OR 1/6739986640020159861048768055285511008" THICK  
 LEAD OR 1/13479973280040319722097360110710222016" THICK  
 LEAD OR 1/26959946560080639444194720221420444032" THICK  
 LEAD OR 1/5391989312016127888838944444284088864" THICK  
 LEAD OR 1/107839786240322557777777888885681777128" THICK  
 LEAD OR 1/21567957248064511555555777777137155552" THICK  
 LEAD OR 1/43135914496129023111111555555274311008" THICK  
 LEAD OR 1/86271828992258046222223111111046222016" THICK  
 LEAD OR 1/172543657984516092444462222222109444032" THICK  
 LEAD OR 1/34508731596903218488892444444421888864" THICK  
 LEAD OR 1/69017463193806436977784888888843777128" THICK  
 LEAD OR 1/1380349263876128739556977777778755552" THICK  
 LEAD OR 1/27606985277522574791139556977777137155552" THICK  
 LEAD OR 1/55213970555045149422279113955697777137155552" THICK  
 LEAD OR 1/1104279411100902988445582383175569777137155552" THICK  
 LEAD OR 1/2208558822201805976891166476635137155552" THICK  
 LEAD OR 1/44171176444036119537823329327067137155552" THICK  
 LEAD OR 1/88342352888072239075646658654137155552" THICK  
 LEAD OR 1/17668470577614447815129331730827137155552" THICK  
 LEAD OR 1/35336941155228895630258664661627137155552" THICK  
 LEAD OR 1/706738823104577912605173293225137155552" THICK  
 LEAD OR 1/14134776462091558252114658665027137155552" THICK  
 LEAD OR 1/282695529241831151042293173293225137155552" THICK  
 LEAD OR 1/565391058483662302084586346580547137155552" THICK  
 LEAD OR 1/1130782116967324604169273293225137155552" THICK  
 LEAD OR 1/22615642339346492083385465866107137155552" THICK  
 LEAD OR 1/4523128467869298416677193173293225137155552" THICK  
 LEAD OR 1/90462569357385968333543863462137155552" THICK  
 LEAD OR 1/18092513871477193666708773293225137155552" THICK  
 LEAD OR 1/36185027742954387333543863462137155552" THICK  
 LEAD OR 1/72370055485908774666708773293225137155552" THICK  
 LEAD OR 1/144740110971817549333543863462137155552" THICK  
 LEAD OR 1/28948022194363509866708773293225137155552" THICK  
 LEAD OR 1/578960443887270197333543863462137155552" THICK  
 LEAD OR 1/115792088777454039466708773293225137155552" THICK  
 LEAD OR 1/2315841775549080789333543863462137155552" THICK  
 LEAD OR 1/463168355109816157866708773293225137155552" THICK  
 LEAD OR 1/9263367102196323157333543863462137155552" THICK  
 LEAD OR 1/185267342043926463566708773293225137155552" THICK  
 LEAD OR 1/3705346840878529271333543863462137155552" THICK  
 LEAD OR 1/74106936817570585426