

State of Vermont
Department of State Buildings
NEW STORAGE SHEDS

A.O.T. MAINTENANCE FACILITY
NORTH FERRISBURG, VERMONT

AGENCY OF ADMINISTRATION
DEPARTMENT OF STATE BUILDINGS
2 GOVERNOR AIKEN AVENUE
MONTPELIER, VERMONT 05633-5801
THOMAS W. TORTI, COMMISSIONER

AGENCY OF TRANSPORTATION
1 NATIONAL LIFE DRIVE
DRAWER 33
MONTPELIER, VT 05633
PATRICIA A. McDONALD, SECRETARY



James H. Douglas
Governor

April, 2003

INDEX OF SHEETS

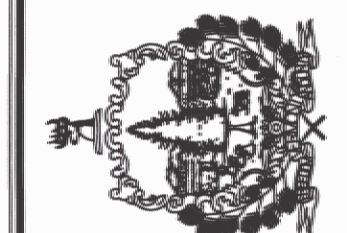
A1 NEW 26'x52' STORAGE SHED
A2 NEW 26'x38' STORAGE SHED
A3 NEW 40'x64' STORAGE SHED



LOCATION PLAN



STATE OF VERMONT
 Department of Buildings
 and General Services
 Agency of Administration
 Montpelier, Vermont



VERMONT

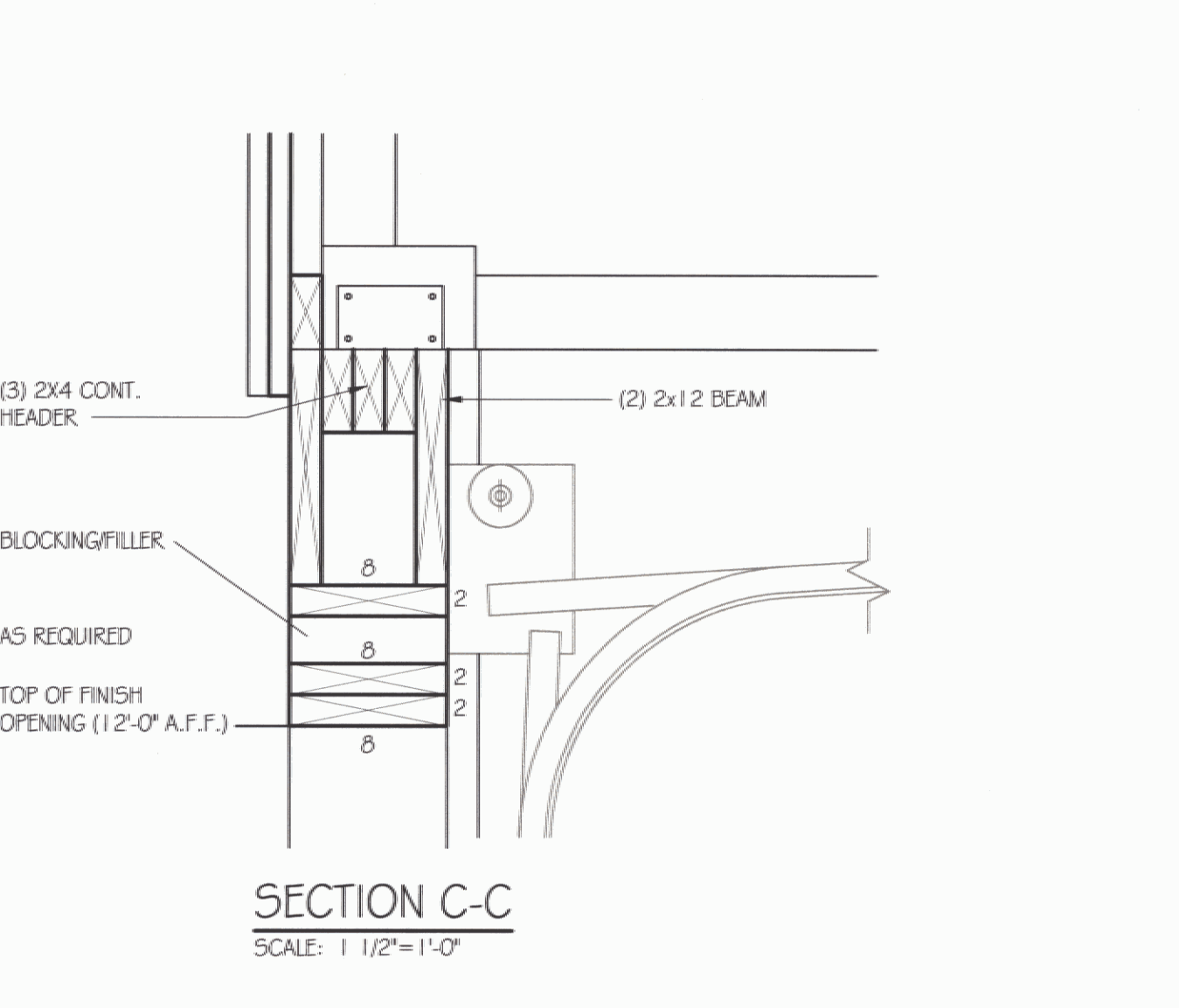
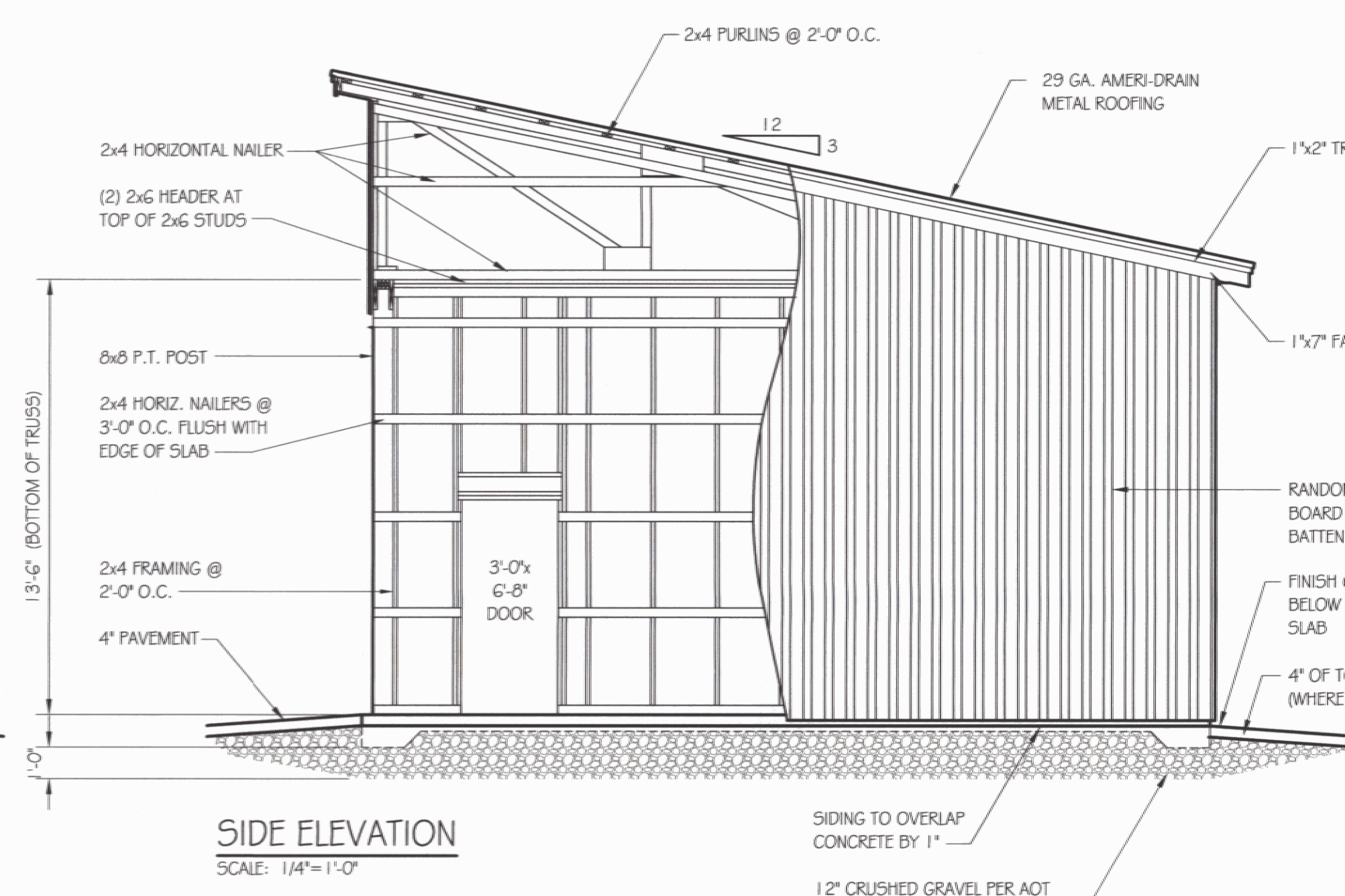
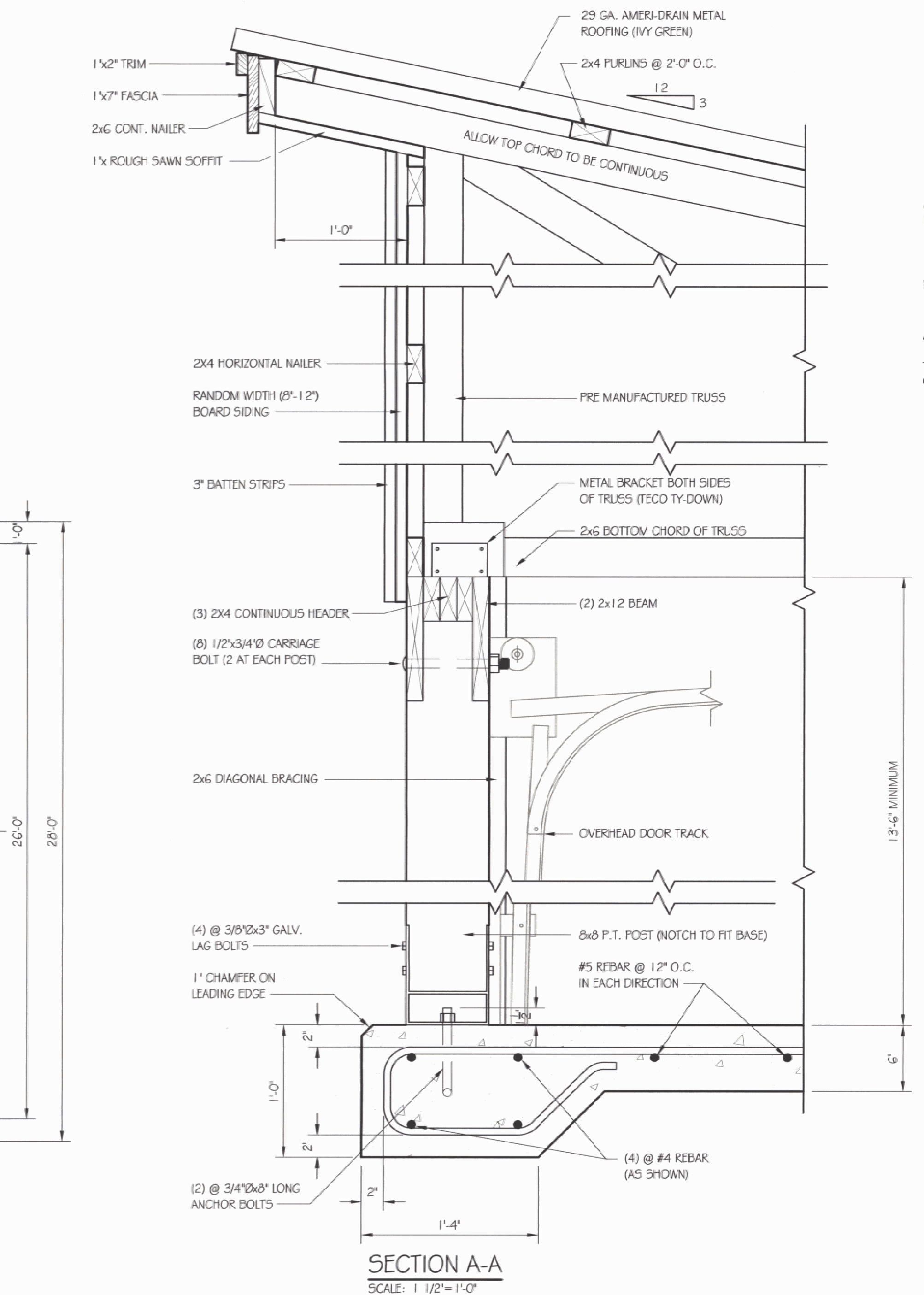
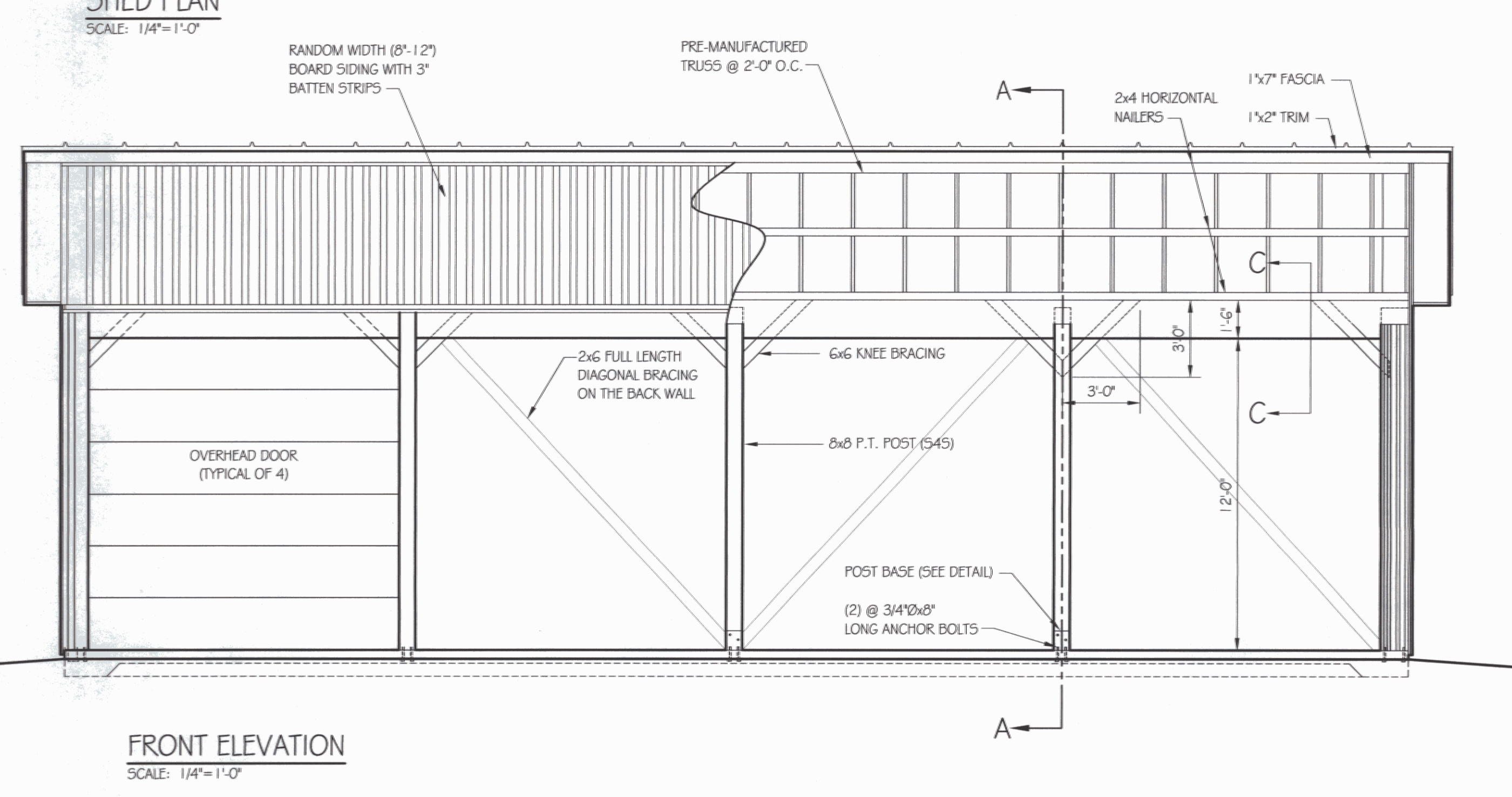
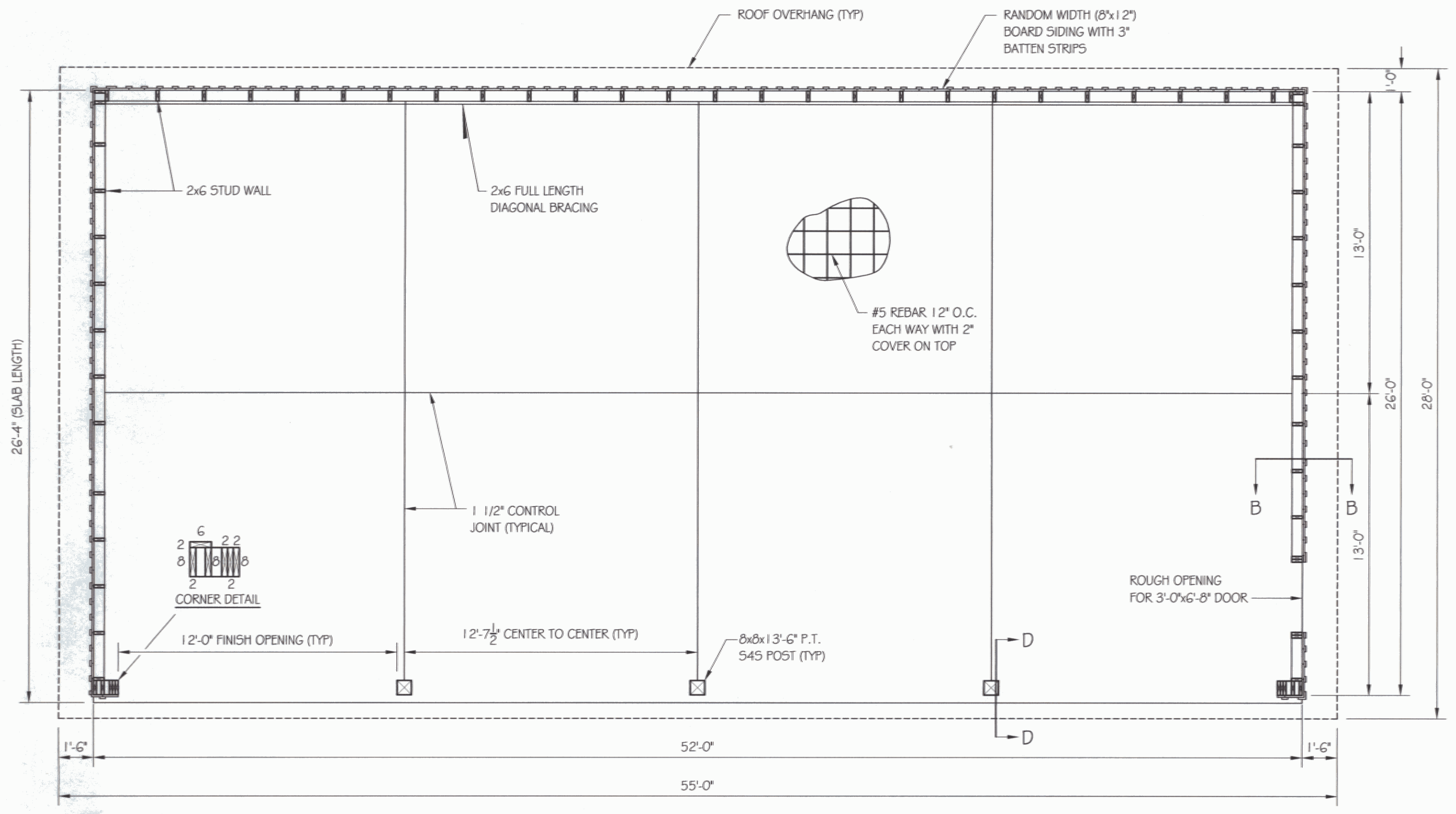
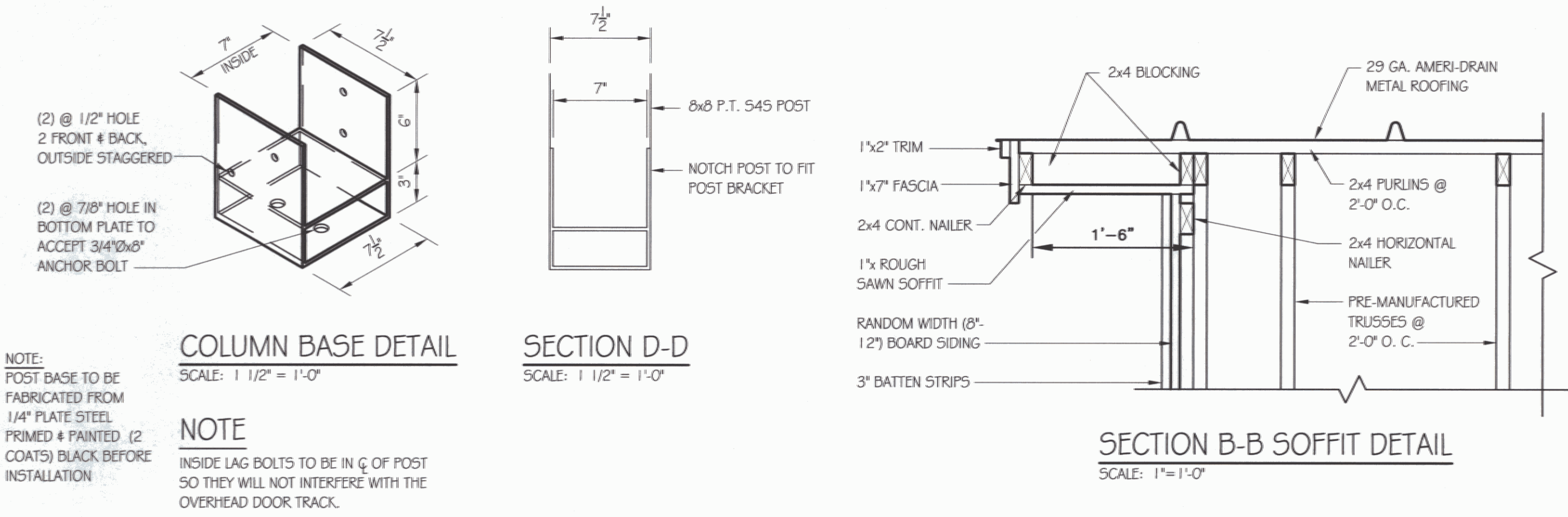
AGENCY OF TRANSPORTATION
 NEW 26x52' STORAGE SHED
 PLAN, DETAILS & ELEVATIONS

NORTH FERRISBURG

REVISIONS

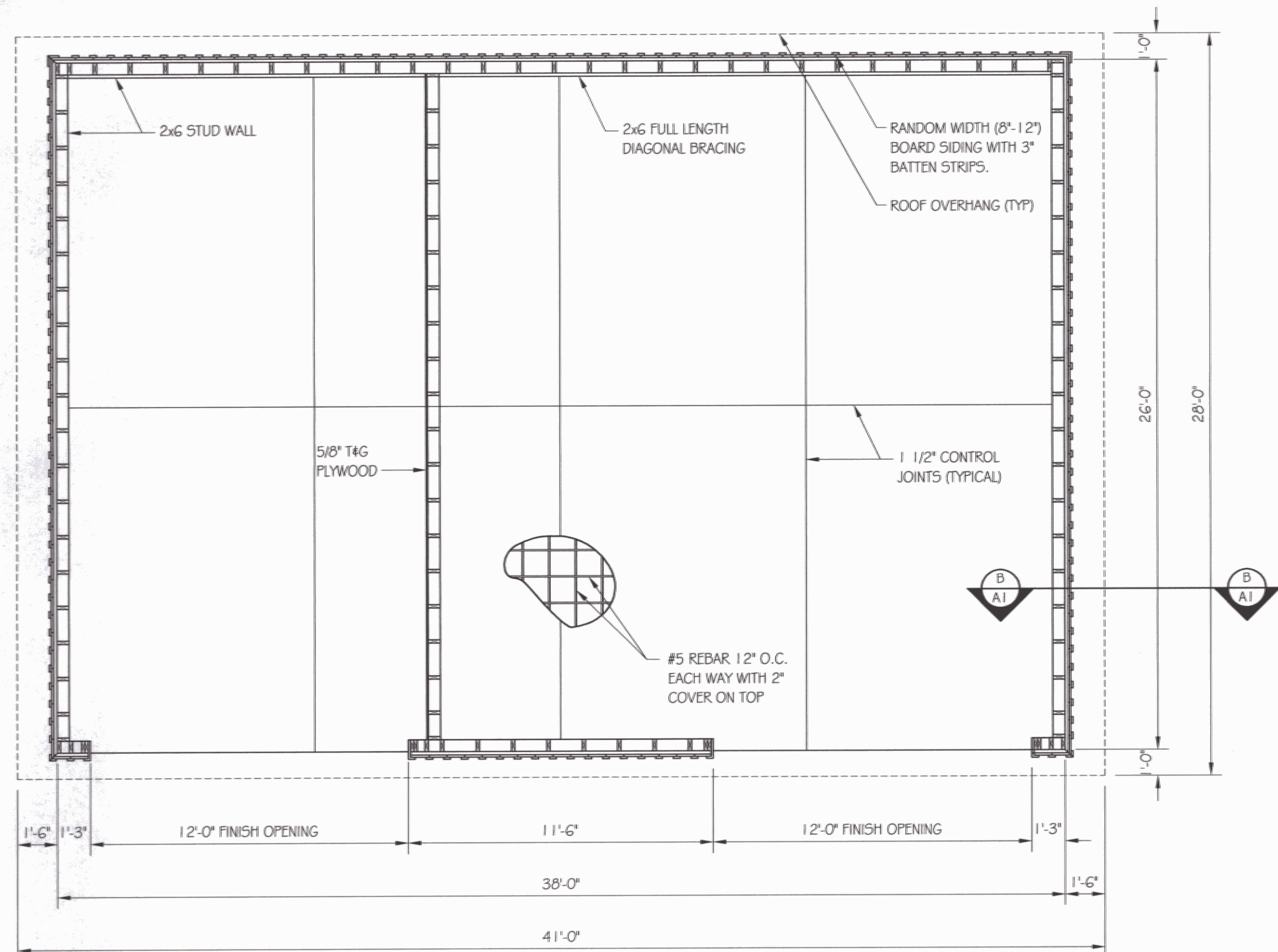
SCALE:	AS NOTED
DATE:	3/2004
DRAWN BY:	T. DREW
APPR. BY:	M. MILLER

AGENCY OF TRANSPORTATION
 NEW 26x52' STORAGE SHED
 PLAN, DETAILS & ELEVATIONS



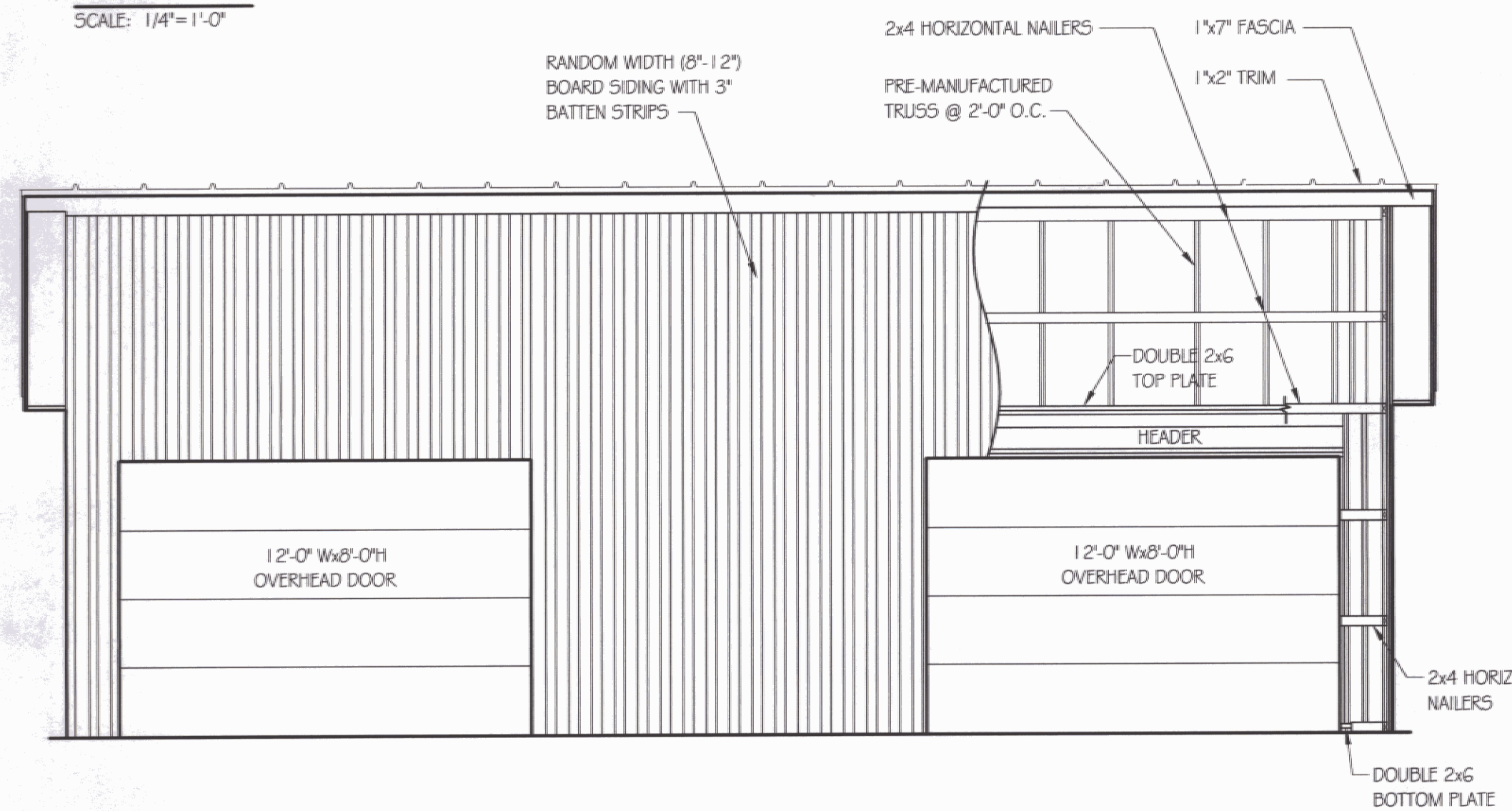
GENERAL NOTES

- STEEL DOOR AND FRAME NOTES:**
 DOOR: DOOR SHALL BE UNINSULATED 16 GAUGE METAL, 1 3/4" THICK, ZINC COATED PER ASTM 525.
 FRAME: 14 GAUGE METAL, ZINC COATED
 MANUFACTURER: STEEL KRAFT OR APPROVED EQUAL.
 HARDWARE: SEE SPECIFICATIONS
- OVERHEAD DOOR NOTES:**
 SEE SPECIFICATIONS
- TRUSS NOTES:**
 TRUSS MANUFACTURER TO PROVIDE DEPT. OF STATE BUILDINGS ENGINEER A SET OF ENGINEERED & STAMPED DRAWINGS FOR APPROVAL PRIOR TO TRUSS MANUFACTURE (ENGINEER MUST BE LICENSED IN VERMONT).
 TRUSS MANUFACTURER TO PROVIDE THE CONTRACTOR WITH ALL NECESSARY INSTRUCTIONS FOR PROPER TRUSS INSTALLATION, ANCHORAGE, BRACING, LIFTING, ETC..
 TRUSS DESIGN LOADS IN ACCORDANCE WITH THE 1987 B.O.C.A. FOR VERMONT.
- MINIMUM LOADS:**
 LIVE - PER 1987 B.O.C.A. FOR VERMONT (40 PSF MIN.)
 DEAD - AS CALCULATED FROM TRUSS & ROOF MATERIAL
 5 PSF ON BOTTOM CHORD
 WIND - 25 PSF
 DIAGONAL WIND BRACING PER TRUSS MANUFACTURE.
- LUMBER NOTES:**
 FRAMING MEMBERS TO BE KILN DRIED CONSTRUCTION GRADE SPRUCE 545 19% MOISTURE CONTENT.
 PLATES & NAILERS IN CONTACT WITH CONCRETE TO BE CCA 0.40 TREATED
 BOARD & BATTEN SIDING, TRIM, AND SOFFIT MATERIAL TO BE NATIVE ROUGH SAWN WHITE PINE, SPRUCE, EASTERN FIR OR RED PINE. BOARDS TO BE RANDOM WIDTH 8"-12" - BATTEN 3".
 BOARD SIDING & BATTEN STRIPS TO BE FULL LENGTH (NO HORIZONTAL JOINTS).
 ALL FASTENERS TO BE GALVANIZED AND SHALL BE APPROPRIATELY SIZED.
- FINISH NOTES:**
 ALL BOARDS & BATTEN TO BE STAINED WITH ONE COAT (ALL SURFACES) PRIOR TO INSTALLATION. AFTER INSTALLATION EXTERIOR SIDING TO RECEIVE ONE ADDITIONAL COAT OF STAIN.
 ROOFING COLOR: IVY GREEN (BY AMERI-DRAIN)
 STAIN TO BE OLYMPIC OIL BASE SEMI-TRANSPARENT OXFORD BROWN #71.3.
- CONCRETE NOTES:** PER A.O.T. STANDARD.
 CONCRETE STRENGTH TO BE 3500 PSI
 CONCRETE FINISH TO BE FLOATED.
 CONCRETE TO BE CLASS "B" PER AOT STANDARD SPECIFICATIONS TABLE 501.03A WITH 5% ± 1% AIR ENTRAINMENT, AND 2'-4" SLUMP.
 RE-BAR TO BE CONTINUOUS THROUGH CONSTRUCTION JOINTS.
 CONTRACTOR TO LEAVE NO METAL WITHIN 1" OF SURFACE. USE 1" DEEP PLASTIC CONES AT ALL TIES AND PLUG ALL THE HOLES WITH AN APPROVED NON-SHRINK GROUT.
 ALL RE-BAR TO BE GRADE 60 WITH 3" CLEARANCE ON ALL SIDES UNLESS NOTED OTHERWISE.
 RE-BAR TO BE STORED ON BLOCKING 4" MINIMUM ABOVE GROUND.
 CONCRETE SUPPLIER TO PROVIDE TEST CYLINDERS FOR CONCRETE TESTING.
 ALL CONCRETE TESTING TO BE DONE BY OWNER. CONTRACTOR IS RESPONSIBLE FOR SCHEDULING.
 CONCRETE CURING SHALL FOLLOW IMMEDIATELY AFTER FORM REMOVAL PER A.O.T. STANDARD 501.17A. WATER CURING WILL BE REQUIRED, UNLESS ALTERNATE MEANS OF CURING IS APPROVED, IN WRITING, BY THE PROJECT ENGINEER.



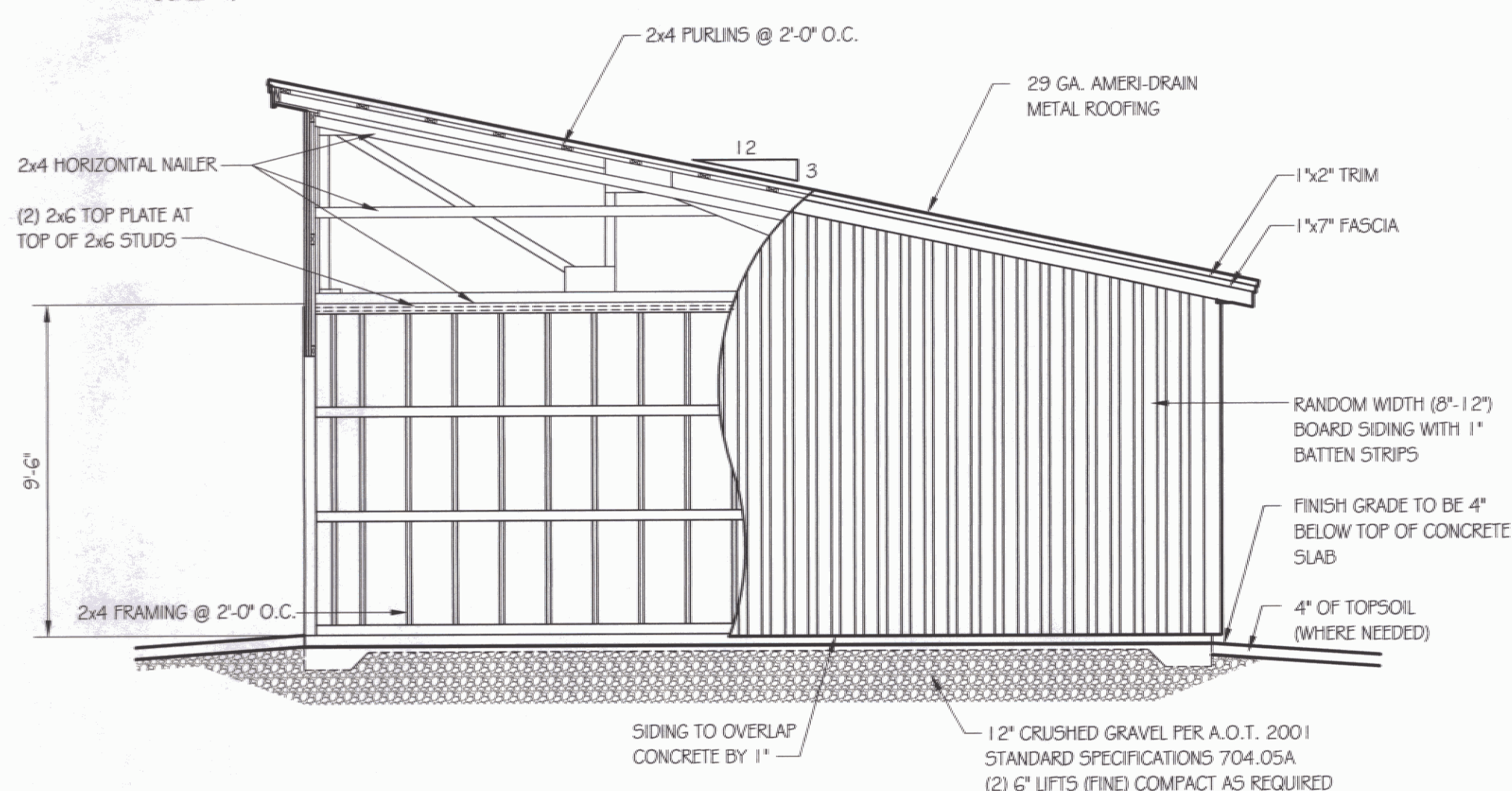
SHED PLAN

SCALE: 1/4"=1'-0"



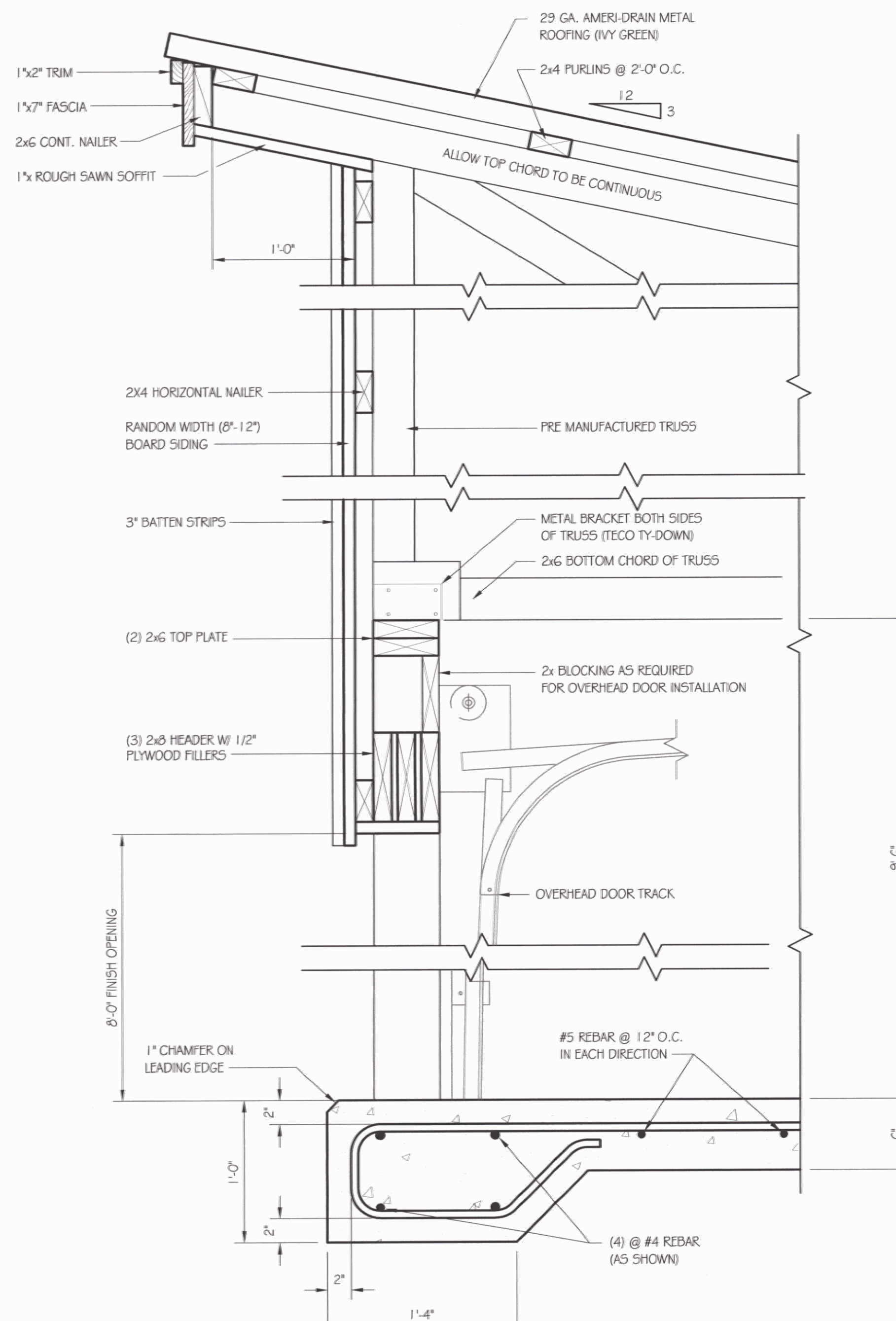
FRONT ELEVATION

SCALE: 1/4"=1'-0"



SIDE ELEVATION

SCALE: 1/4"=1'-0"



SECTION THRU FRONT WALL

SCALE: 1 1/2"=1'-0"

GENERAL NOTES

STEEL DOOR AND FRAME NOTES:

DOOR: DOOR SHALL BE UNINSULATED 16 GAUGE METAL, 1 3/4" THICK, ZINC COATED PER ASTM 525.
 FRAME: 14 GAUGE METAL, ZINC COATED
 MANUFACTURER: STEEL KRAFT OR APPROVED EQUAL.
 HARDWARE: SEE SPECIFICATIONS

OVERHEAD DOOR NOTES:

SEE SPECIFICATIONS

TRUSS NOTES:

TRUSS MANUFACTURER TO PROVIDE DEPT. OF STATE BUILDINGS ENGINEER A SET OF ENGINEERED & STAMPED DRAWINGS FOR APPROVAL PRIOR TO TRUSS MANUFACTURE (ENGINEER MUST BE LICENSED IN VERMONT).

TRUSS MANUFACTURER TO PROVIDE THE CONTRACTOR WITH ALL NECESSARY INSTRUCTIONS FOR PROPER TRUSS INSTALLATION, ANCHORAGE, BRACING, LIFTING, ETC..

TRUSS DESIGN LOADS IN ACCORDANCE WITH THE 1987 B.O.C.A. FOR VERMONT.

MINIMUM LOADS:

LIVE - PER 1987 B.O.C.A. FOR VERMONT (40 PSF MIN.)
 DEAD - AS CALCULATED FROM TRUSS & ROOF MATERIAL
 5 PSF ON BOTTOM CHORD
 WIND - 25 PSF
 DIAGONAL WIND BRACING PER TRUSS MANUFACTURE.

LUMBER NOTES:

FRAMING MEMBERS TO BE KILN DRIED CONSTRUCTION GRADE SPRUCE 545 19% MOISTURE CONTENT.

PLATES & NAILERS IN CONTACT WITH CONCRETE TO BE CCA 0.40 TREATED

BOARD & BATTEN SIDING, TRIM, AND SOFFIT MATERIAL TO BE NATIVE ROUGH SAWN WHITE PINE, SPRUCE, EASTERN FIR OR RED PINE. BOARDS TO BE RANDOM WIDTH 8"-12" - BATTEN 3".

BOARD SIDING & BATTEN STRIPS TO BE FULL LENGTH (NO HORIZONTAL JOINTS).

ALL FASTENERS TO BE GALVANIZED AND SHALL BE APPROPRIATELY SIZED.

FINISH NOTES:

ALL BOARDS & BATTEN TO BE STAINED WITH ONE COAT (ALL SURFACES) PRIOR TO INSTALLATION. AFTER INSTALLATION EXTERIOR SIDING TO RECEIVE ONE ADDITIONAL COAT OF STAIN.

ROOFING COLOR: IVY GREEN (BY AMERI-DRAIN)

STAIN TO BE OLYMPIC OIL BASE SEMI-TRANSPARENT OXFORD BROWN #713.

CONCRETE NOTES: PER A.O.T. STANDARD.

CONCRETE STRENGTH TO BE 3500 PSI

CONCRETE FINISH TO BE FLOATED.

CONCRETE TO BE CLASS "B" BY PER AOT STANDARD SPECIFICATIONS TABLE 501.03A WITH 5% ± 1% AIR ENTRAINMENT, AND 2'-4" SLUMP.

RE-BAR TO BE CONTINUOUS THROUGH CONSTRUCTION JOINTS.

CONTRACTOR TO LEAVE NO METAL WITHIN 1" OF SURFACE. USE 1" DEEP PLASTIC CONES AT ALL TIES AND PLUG ALL TIE HOLES WITH AN APPROVED NON-SHRINK GROUT.

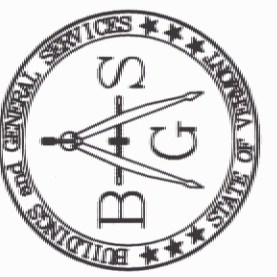
ALL RE-BAR TO BE GRADE 60 WITH 3" CLEARANCE ON ALL SIDES UNLESS NOTED OTHERWISE.

RE-BAR TO BE STORED ON BLOCKING 4" MINIMUM ABOVE GROUND.

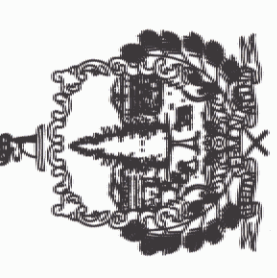
CONCRETE SUPPLIER TO PROVIDE TEST CYLINDERS FOR CONCRETE TESTING.

ALL CONCRETE TESTING TO BE DONE BY OWNER. CONTRACTOR IS RESPONSIBLE FOR SCHEDULING.

CONCRETE CURING SHALL FOLLOW IMMEDIATELY AFTER FORM REMOVAL PER A.O.T. STANDARD 501.17A. WATER CURING WILL BE REQUIRED, UNLESS ALTERNATE MEANS OF CURING IS APPROVED, IN WRITING, BY THE PROJECT ENGINEER.



STATE OF VERMONT
 Department of Buildings
 and General Services
 Agency of Administration
 Montpelier, Vermont



VERMONT

DEPARTMENT OF MOTOR VEHICLES
 NEW 26x38' STORAGE SHED
 PLAN, DETAILS & ELEVATIONS

NORTH FERRISBURG

REVISIONS

AS NOTED	DATE: 3/2004	DRAWN BY: T. DREW	APPR. BY: M. MILLER
----------	--------------	-------------------	---------------------

DEPARTMENT OF
 MOTOR VEHICLES
 NEW 26x38'
 STORAGE SHED
 PLAN, DETAILS
 & ELEVATIONS

A2

