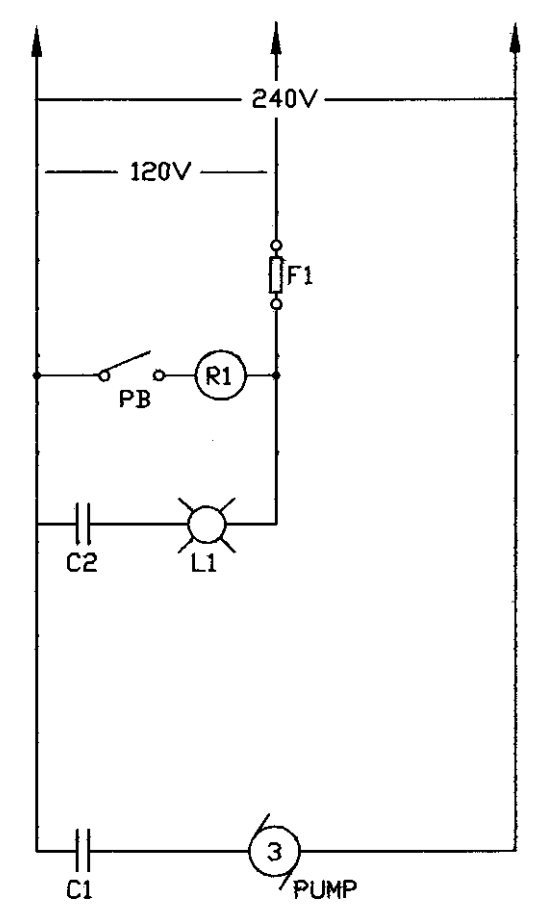


STORAGE SHED - ELECTRICAL POWER AND LIGHTING PLAN

SCALE: 1/4" = 1'-0"

NOTE: ALL ELECTRICAL CONDUIT BELOW GRADE AND ON THE EXTERIOR OF THE BUILDING SHALL BE 1" RIGID CONDUIT. CONDUIT INSIDE THE BUILDING SHALL BE 3/4" SCH. 80 PVC.



CHLORINE TANK DISPENSING SYSTEM CONTROL DIAGRAM

N.T.S.

NOTE: CONTRACTOR SHALL PROVIDE LOCAL PUSHBUTTON, RELAY AND FUSE BLOCK IN GASKETED, WATERPROOF, SALT RESISTANT ENCLOSURE, MOUNTED NEXT TO PUMP. CONTRACTOR SHALL ALSO PROVIDE LOCAL INDICATION LIGHT, WATERPROOF, AND MOUNTED ON THE TOP OF THE PUMPS HOSE TOWER. PROVIDE ALL PVC CONDUIT REQUIRED FOR COMPLETE INSTALLATION.

PB = SQUARE D #BW255, START-STOP WITH MAINTAINED CONTACTS IN NEMA 4 BDX

R1 = SQUARE D #CD7120, DPST RELAY, 30 AMP CONTACT RATING

L1 = EDWARDS #48S1A-15-25VH, 120V INDICATING LIGHT, AMBER, NEMA 4X ENCLOSURE

F1 = FUSE BLOCK WITH 5A, 120V FUSE

ELECTRICAL NOTES:

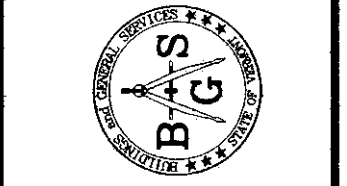
- 1. FURNISH AND INSTALL RECEPTACLES FOR BATTERY CHARGERS, LOCATED AS DIRECTED BY OWNER. MOUNT RECEPTACLES AT 36" HEIGHT.
- 2. MOUNT LIGHT FIXTURES WITH JACK CHAIN AT 13'-0" HEIGHT TO AVOID OVERHEAD DOORS AND TRACK SYSTEM.
- 3. NOT USED.
- 4. ALL CONDUIT SYSTEMS WITHIN SALT SHED SHALL BE PVC-40 WITH ALL REQUIRED COUPLINGS, J-BOXES AND HARDWARE.



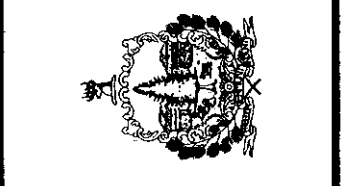
KIRICK ENGINEERING ASSOCIATES, P.C.
Electrical / Telecom Consulting
5399 WILLISTON ROAD
WILLISTON, VT 05495
Phone: 802-655-5731 Fax: 888-844-7172

1795 WILLISTON RD. STE. 200
WILLISTON, VT 05495
Phone: (802) 865-4900
29 WATER STREET, STE. 504
MONTPELIER, VT 05602
Phone: (802) 486-8888
100 ARCADE, MONTPELIER, VT 05602
Phone: (817) 471-8616

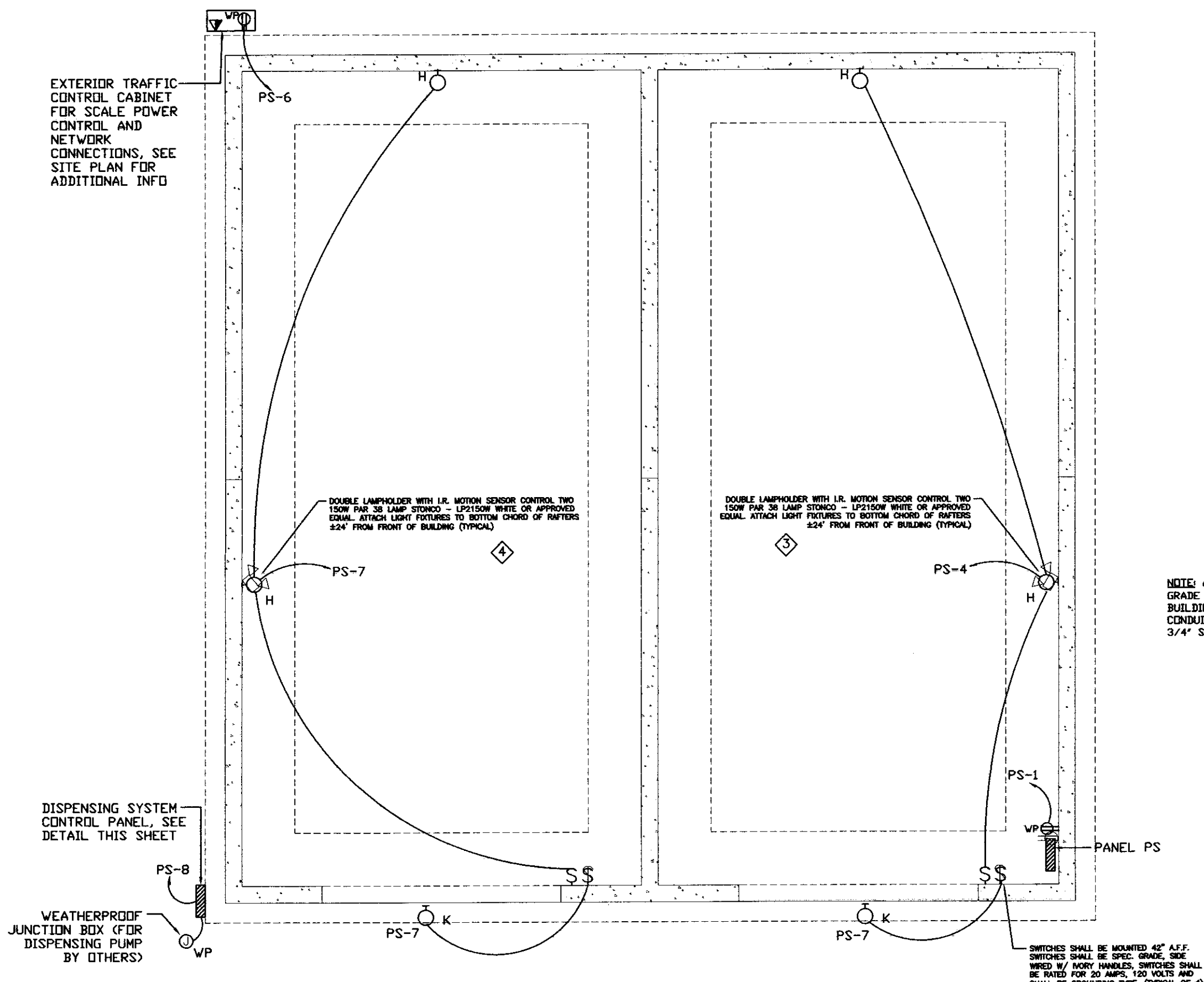
D&W
DORR AND WELCHER, INC.
Architects & Project Managers



STATE OF VERMONT
DEPARTMENT OF BUILDINGS
AND GENERAL SERVICES
AGENCY OF ADMINISTRATION
MONTPELIER, VERMONT



AGENCY OF TRANSPORTATION
N. FERRISBURGH MAINTENANCE FACILITY
N. FERRISBURGH, VERMONT

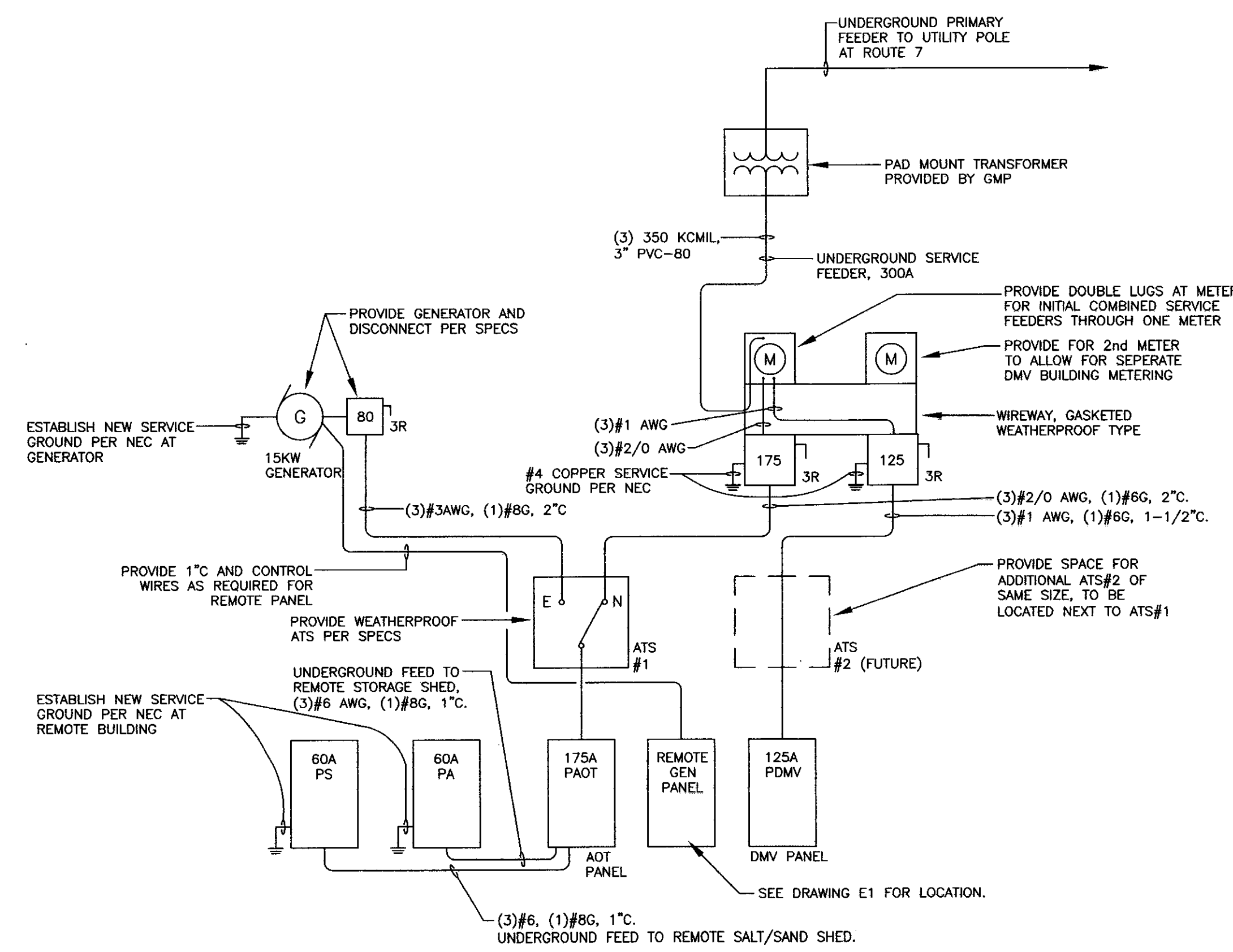


SALT-SAND STORAGE BUILDING - ELECTRICAL POWER AND LIGHTING PLAN

SCALE: 1/8" = 1'-0"

NOTE: ALL ELECTRICAL CONDUIT BELOW GRADE AND ON THE EXTERIOR OF THE BUILDING SHALL BE 1" RIGID CONDUIT. CONDUIT INSIDE THE BUILDING SHALL BE 3/4" SCH. 80 PVC.

SWITCHES SHALL BE MOUNTED 48" AFF. SWITCHES SHALL BE SPEC. HOME SIZE W/ 1/2" HOLES. SWITCHES SHALL BE GROUNDING TYPE (TYPICAL OF 4).



POWER ONE-LINE DIAGRAM

N.T.S.

120/240 VOLT 1 PHASE 3 WIRE												
PA STORAGE SHED												
60A MAIN LUG SURFACE MOUNT												
Description												
RECEPTACLES - STORAGE SHED	2#12/1#12G	3/4"	0.4	20	1	A	2	20	0.4	3/4"	2#12/1#12G	EXTERIOR LIGHTS - STORAGE SHED
RECEPTACLES - STORAGE SHED	2#12/1#12G	3/4"	0.6	20	3	B	4	20	3/4"	2#12/1#12G	LIGHTING - STORAGE SHED	
RECEPT. STORAGE SHED BATTERY CHARGER	2#12/1#12G	3/4"	20	5	A	6	20	3/4"	2#12/1#12G	RECEPT. STORAGE SHED BATTERY CHARGER		
SPARE			20	7	B	8						
				9	A	10						
LOAD DATA												
Phase A												
Phase B												
Total Connected												

120/240 VOLT 1 PHASE 3 WIRE												
PS SALT-SAND STORAGE BUILDING												
60A MAIN LUG SURFACE MOUNT												
Description												
EXTERIOR RECEPT.	2#12/1#12G	3/4"	20-1P	1	A	2						BLANK
BLANK			20-1P	3	B	4	20-1P	3/4"	2#12/1#12G			LIGHTS-INTERIOR SAND STORAGE
SPARE			20-1P	5	A	6	20-1P	3/4"	2#12/1#12G			RECEPT. ROW - EXT. TRAFFIC CONTROL CABINET
EXTERIOR LIGHTS	2#12/1#12G	3/4"	20-1P	7	B	8	20-1P	3/4"	2#12/1#12G			CHLORINE DISPENSING SYSTEM CONTROL PNL
				9	A	10						
				11	B	12						
				13	A	14						
				15	B	16						
LOAD DATA												
Phase A												
Phase B												
Total Connected												

REVISIONS

SCALE: AS NOTED
DATE: 01/04/06
DRAWN BY: DJG
APPR. BY: MFK

ELECTRICAL POWER & LIGHTING PLAN