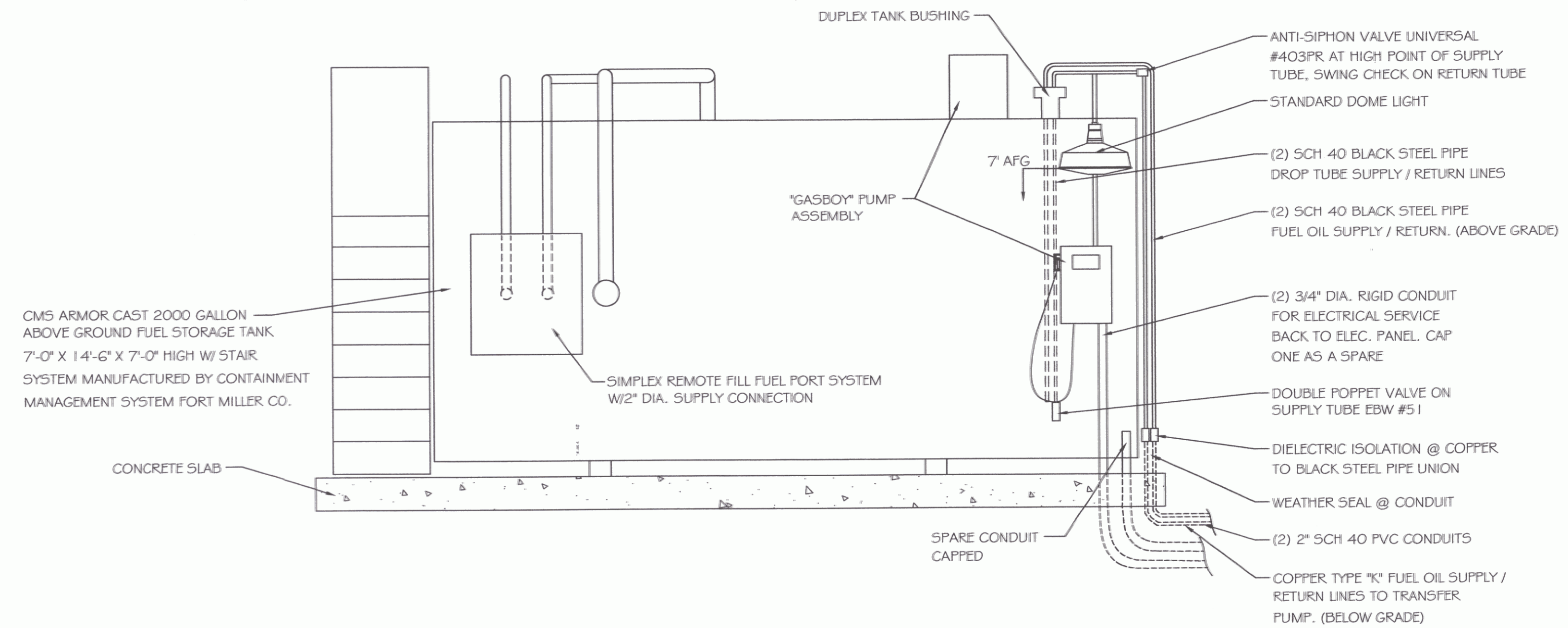


SPECIFICATIONS

- 1.) "ARMOR CAST" 2000 GALLON, DOUBLE WALL, ABOVE GROUND FUEL STORAGE TANK, OR APPROVED EQUAL.
- 2.) 2" DIA. UPDRAFT VENT
- 3.) 6" DIA. EMERGENCY VENT
- 4.) REMOTE FILL WITH OVERFLOW PREVENTION VALVE, DROP TUBE, ADAPTER AND DUST CAP
- 5.) CLOCK STYLE LIQUID LEVEL INDICATOR 818 (GALLONS)
- 6.) LOCKABLE FLIP CAP TO STICK TANK
- 7.) TANK GAUGE STICK
- 8.) KRUEGER MECHANICAL LEAK DETECTION GAUGE
- 9.) 4" COUPLING WITH DOUBLE TAP BUSHING WITH TWO 1/2" PORTS
- 10.) 1/2" SUCTION AND RETURN TUBES
- 11.) DOUBLE POPPET FOOT VALVE
- 12.) "GASBOY" #9823, 3/4 HP COMMERCIAL PUMP WITH REMOTE LCD REGISTER
- 13.) "GASBOY" REMOTE REGISTER TANK MOUNT KIT
- 14.) INTERNAL FILTER; ADAPTER & ELEMENT, DIESEL
- 15.) 1" DIA CURB HOSE WITH WHIP, LONG ENOUGH TO FILL EMERGENCY GENERATOR LOCATED NEXT TO FUEL TANK, SWIVEL & SAFE BREAK COUPLING
- 16.) HIGH SPEED DIESEL AUTO NOZZLE
- 17.) 1 1/2" Ø ANGLE CHECK VALVE, SINGLE POPPET & EXTERNAL EMERGENCY VALVE
- 18.) MODEL SP200L STEEL STAIRS WITH 1 HANDRAIL, GALVANIZED



2000 GAL. ABOVE GROUND FUEL STORAGE TANK

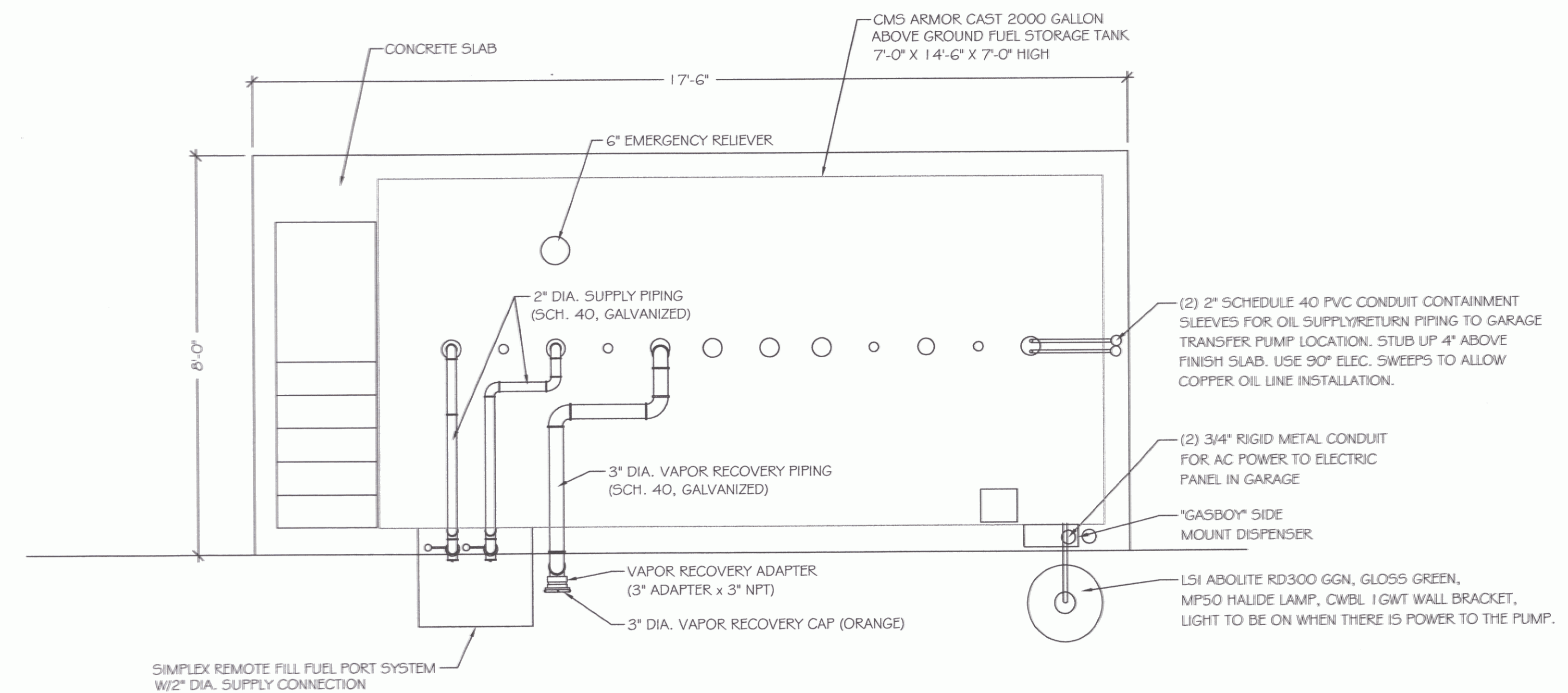
SCALE: 1/2" = 1'-0"

NOTES:

1. FASTEN OIL LINES & ELECTRICAL CONDUIT SECURELY ACCORDING TO TANK MANUFACTURERS INSTRUCTIONS.
2. CONTRACTOR TO MAKE ALL CONDUIT AND ELECTRICAL CONNECTIONS BETWEEN PANEL / PUMP AND REGISTER PER MANUFACTURERS INSTRUCTIONS.
3. FOR SIZES ON FUEL SUPPLY / RETURN PIPING SEE SHEET M-1.

NOTES:

- 1.) SEE SHEET C-5 FOR DETAILS
- 2.) PLACE OIL SUPPLY AND RETURN CONDUITS ON SOUTH END, 6" FROM EDGE OF SLAB TO INSIDE EDGE OF CONDUIT (CENTERED IN WIDTH OF SLAB).
- 3.) PLACE (2) 3/4" RIGID ELEC. CONDUIT FROM ELEC. PANEL BACK TO CORNER OF CONCRETE SLAB AS SHOWN ON DRAWINGS.
- 4.) SEAL ALL CONDUITS EXPOSED TO WEATHER TO PREVENT MOISTURE FROM ACCUMULATING IN CONDUIT. USED MECHANICAL SEALS OF APPROVED CAULKING ON EXPOSED CONDUITS OR AROUND FUEL LINES.
- 5.) FUEL TANK SLAB TO COMPLY WITH TANK MANUFACTURERS REQUIREMENT.
- 6.) IF ALTERNATE TANK IS SELECTED, ADJUST SLAB SIZE.

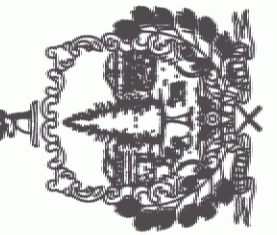


PLAN VIEW OF FUEL STORAGE TANK

SCALE: 1/2" = 1'-0"



STATE OF VERMONT
Department of Buildings
and General Services
Agency of Administration
Montpelier, Vermont



VERMONT

AGENCY OF TRANSPORTATION
NORTH FERRISBURG GARAGE
FUEL STORAGE TANK

REVISIONS

SCALE: AS NOTED
DATE: JANUARY 4, 2006
DRAWN BY: N. HERSEY
APPR. BY: TEIGH

A.O.T.

NORTH FERRISBURG
GARAGE
FUEL STORAGE
TANK

F-1