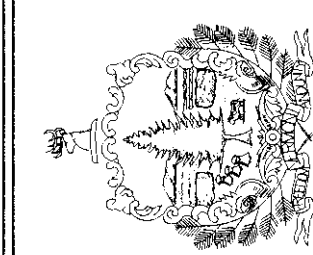




STATE OF VERMONT
Department of Buildings
and General Services
Agency of Administration
Montpelier, Vermont



VERMONT

AGENCY OF TRANSPORTATION
NEW 64' x 64' SALT / SAND SHED
PLAN, DETAILS & ELEVATIONS

NORTH FERRISBURGH

REVISIONS
AS NOTED
DATE: JANUARY 4, 2006
DRAWN BY: S.K. Janawicz
APPR. BY: M. MILLER

SCALE: AS NOTED
DATE: JANUARY 4, 2006
DRAWN BY: S.K. Janawicz
APPR. BY: M. MILLER

AGENCY OF TRANSPORTATION
NEW 64' x 64' SALT / SAND SHED
PLAN, DETAILS & ELEVATIONS

SS-1

GENERAL NOTES

ALL BUILDINGS RELATED EXCAVATION, FILL, BACKFILL, COMPACTION WILL BE PERFORMED BY VTRANS AND COORDINATED WITH GENERAL CONTRACTOR.
ALL SUB BASE OF GRAVEL, COMPACTION, FINAL GRADING AND PAVING OF DRIVES AND PARKING AREAS WILL BE PERFORMED BY VTRANS AND COORDINATED WITH GENERAL CONTRACTOR.

TRUSS NOTES:
TRUSS MANUFACTURER TO PROVIDE DEPT. OF STATE BUILDINGS ENGINEER A SET OF ENGINEERED & STAMPED DRAWINGS FOR APPROVAL PRIOR TO TRUSS MANUFACTURE (ENGINEER MUST BE LICENSED IN VERMONT).

TRUSS MANUFACTURER TO PROVIDE THE CONTRACTOR WITH ALL NECESSARY INSTRUCTIONS FOR PROPER TRUSS INSTALLATION, ANCHORAGE, BRACING.
TRUSS DESIGN LOADS IN ACCORDANCE WITH THE 1987 B.O.C.A. FOR VERMONT.

MINIMUM LOADS:
LIVE - PER 1987 B.O.C.A. FOR VERMONT (40 PSF MIN.)
DEAD - AS CALCULATED FROM TRUSS & ROOF MATERIAL
5 PSF ON BOTTOM CORD
WIND - 25 PSF
DIAGONAL WIND BRACING PER TRUSS MANUFACTURER.

LUMBER NOTES:
FRAMING MEMBERS TO BE KILN DRIED CONSTRUCTION GRADE SPRUCE 545 19% MOISTURE CONTENT.
PLATES & NAILERS IN CONTACT WITH CONCRETE TO BE CCA 0.40 TREATED ALL FASTENERS TO BE GALVANIZED AND SHALL BE APPROPRIATELY SIZED. TRIM AND SOFFIT MATERIAL TO BE NATIVE ROUGH SAWN WHITE PINE, SPRUCE, EASTERN FIR OR RED PINE.

SMARTSIDE PANEL NOTES:
8d GALVANIZED NAILS FOR 19/32" PANELS PENETRATING STUDS 1 1/2" NAIL SPACING; 6" MAX. PERIMETER, 12" MAX FIELD, 3/8" MIN. FROM EDGES. NAILS TO BE SET FLUSH. DO NOT COUNTERSINK NAILS INTO PANEL. MINIMUM 3/8" GAP REQUIRED AT HORIZONTAL JOINTS OF PANEL SIDING. SMARTSIDE PANEL SIDING MUST NOT CONTACT CONCRETE. 1/2" CLEARANCE MIN. SMARTSIDE PANEL SIDING MUST NOT CONTACT GROUND. 6" CLEARANCE MIN. PAINT ALL PANEL SURFACES INCLUDING BOTTOM EDGES
ADDITIONAL SMARTSIDE PANEL INSTALLATION INFO CAN BE FOUND AT WWW.SMARTSIDEONLINE.COM OR CALL 800-648-6893

FINISH NOTES:
ROOFING COLOR: IVY GREEN (BY AMER-DRAIN) OR AS DIRECTED BY ENGINEER
PAINT TO BE OLYMPIC ACRYLIC LATEX SATIN FINISH .
COLOR TO BE DETERMINED BY ENGINEER.
APPLY PAINT AS SOON AS POSSIBLE AFTER SIDING IS INSTALLED.
PRE-PRIME ALL ROUGH SAWN FINISH MATERIAL PRIOR TO INSTALLATION. APPLY TWO COATS OF FINISH.

CONCRETE NOTES: PER A.O.T. STANDARD.
CONCRETE STRENGTH TO BE 3500 PSI
CONCRETE FINISH TO BE FLOATED.

CONCRETE TO BE CLASS "B" PER AOT STANDARD SPECIFICATIONS TABLE 501.03A WITH 5% ± 1% AIR ENTRAINMENT, AND 2"-4" SLUMP.

RE-BAR TO BE CONTINUOUS THROUGH CONSTRUCTION JOINTS.

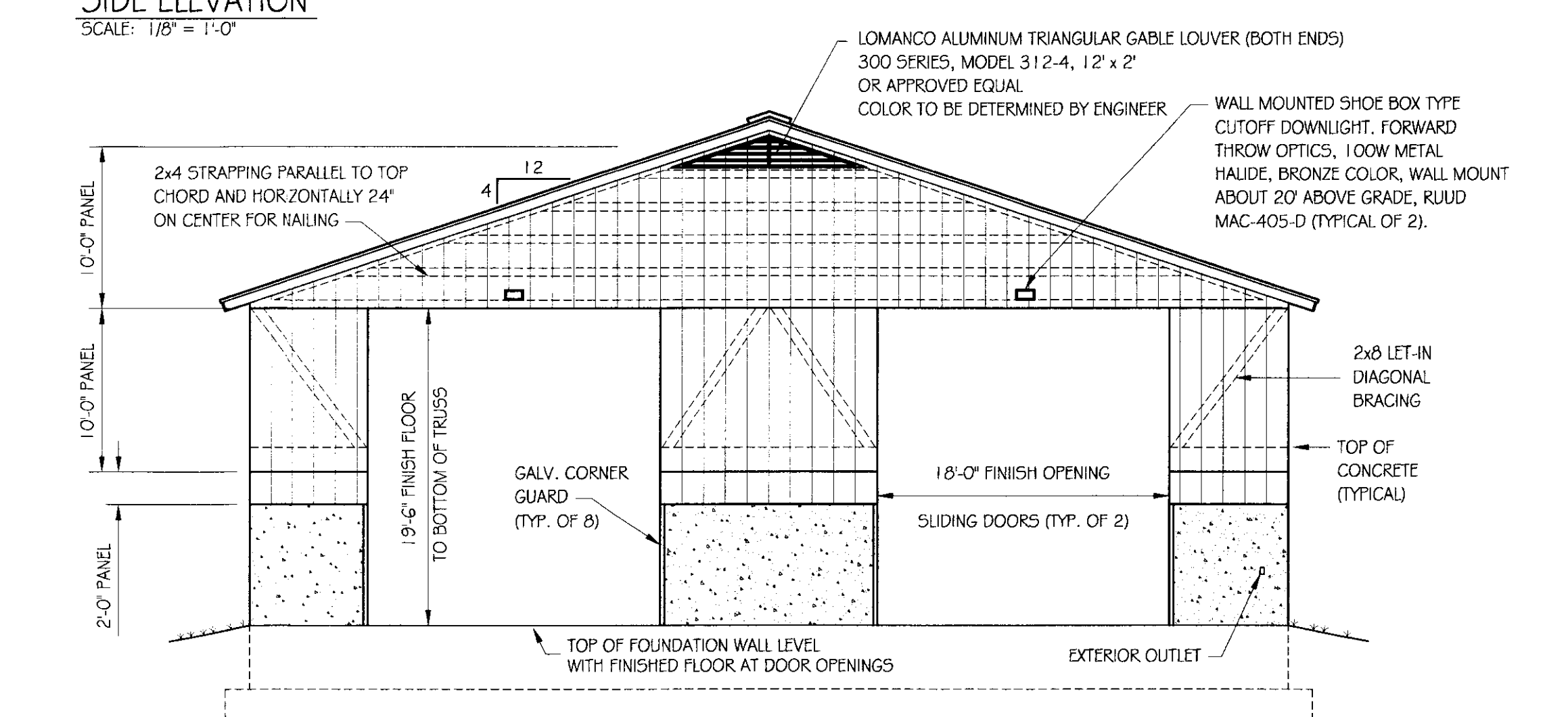
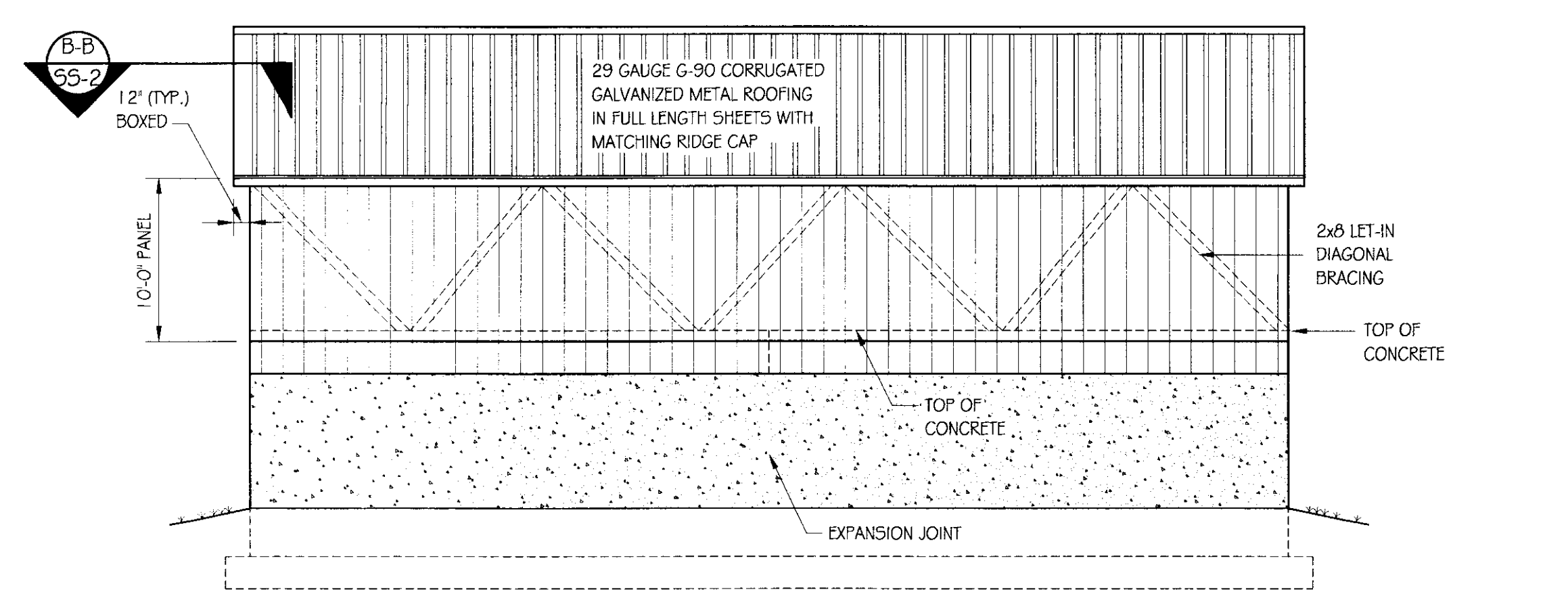
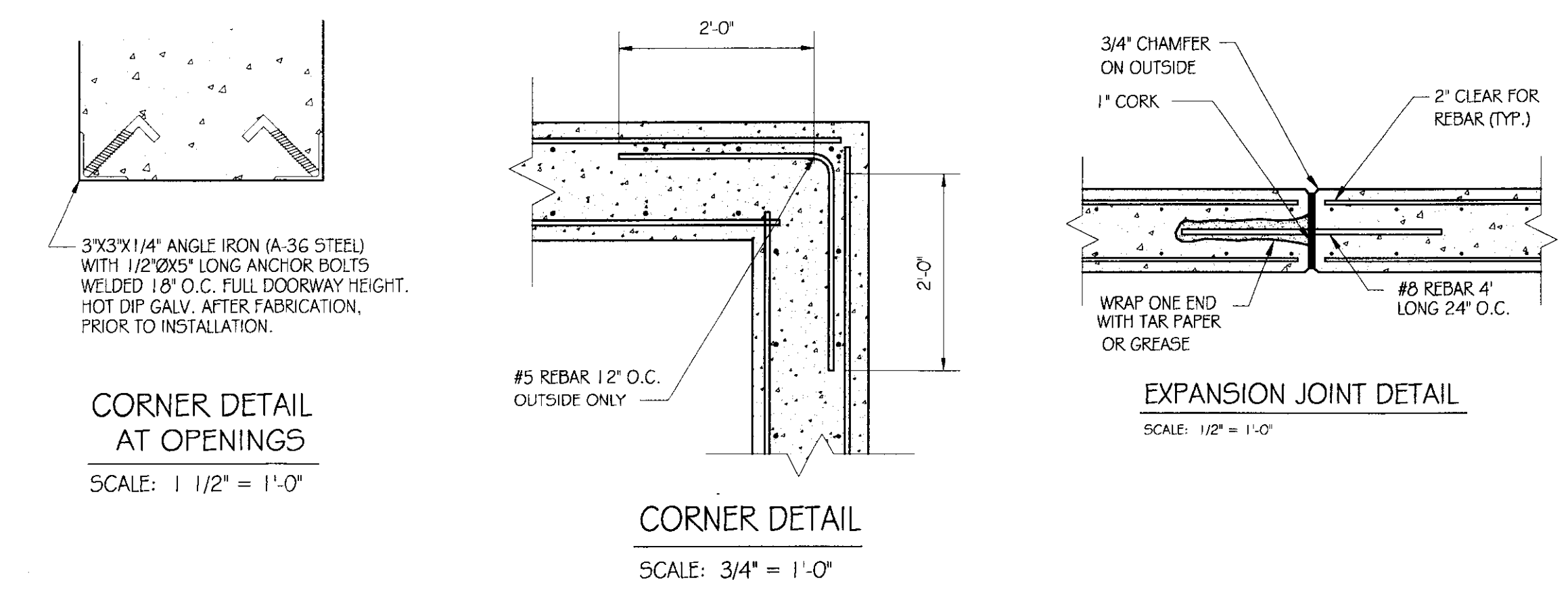
CONTRACTOR TO LEAVE NO METAL WITHIN 1" OF SURFACE. USE 1" DEEP PLASTIC CONES AT ALL TIES AND PLUG ALL THE HOLES WITH AN APPROVED NON-SHRINK GROUT.

ALL RE-BAR TO BE GRADE 60 WITH 3" CLEARANCE ON ALL SIDES UNLESS NOTED OTHERWISE.

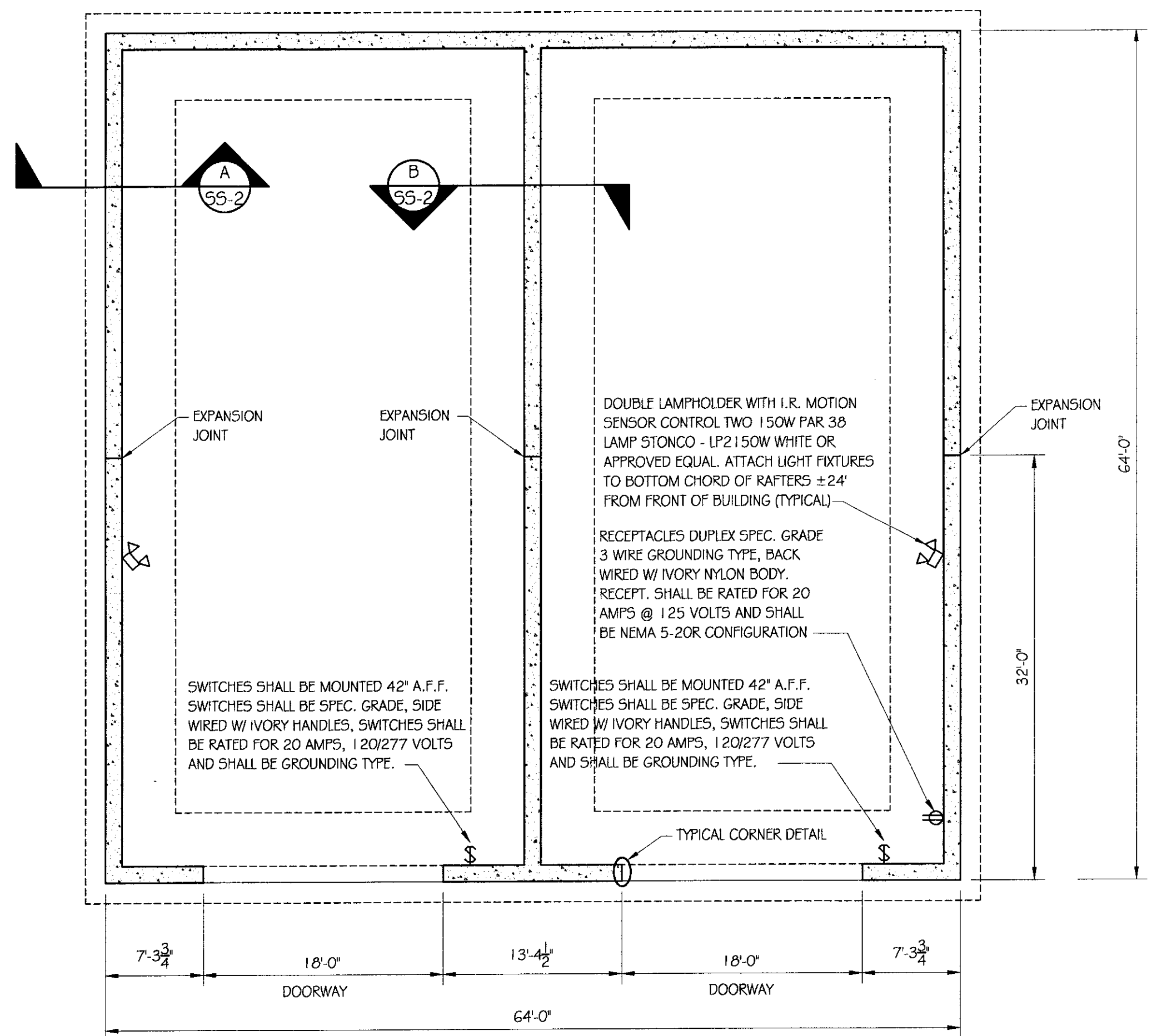
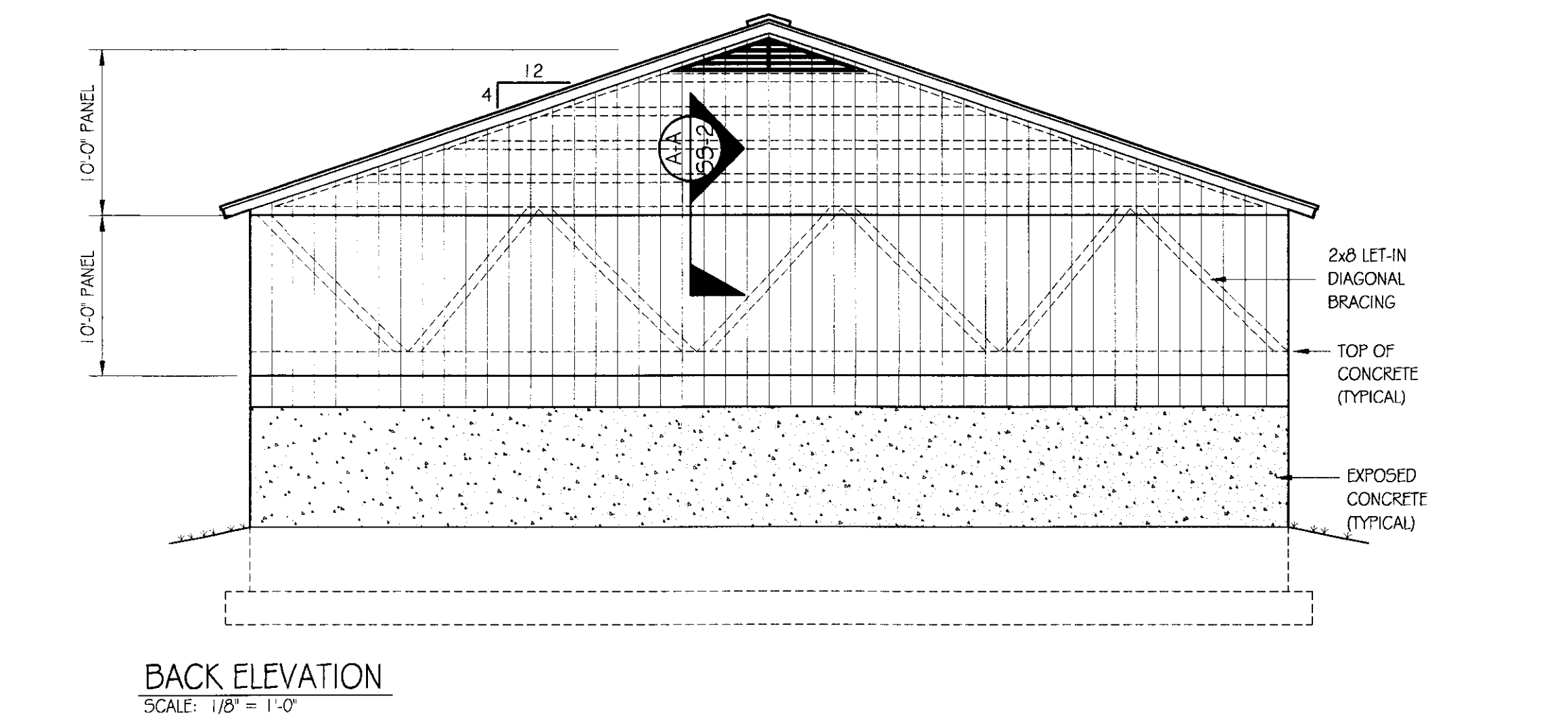
RE-BAR TO BE STORED ON BLOCKING 4" MINIMUM ABOVE GROUND.

CONCRETE SUPPLIER TO PROVIDE TEST CYLINDERS FOR CONCRETE TESTING.
ALL CONCRETE TESTING TO BE DONE BY OWNER. CONTRACTOR IS RESPONSIBLE FOR SCHEDULING.

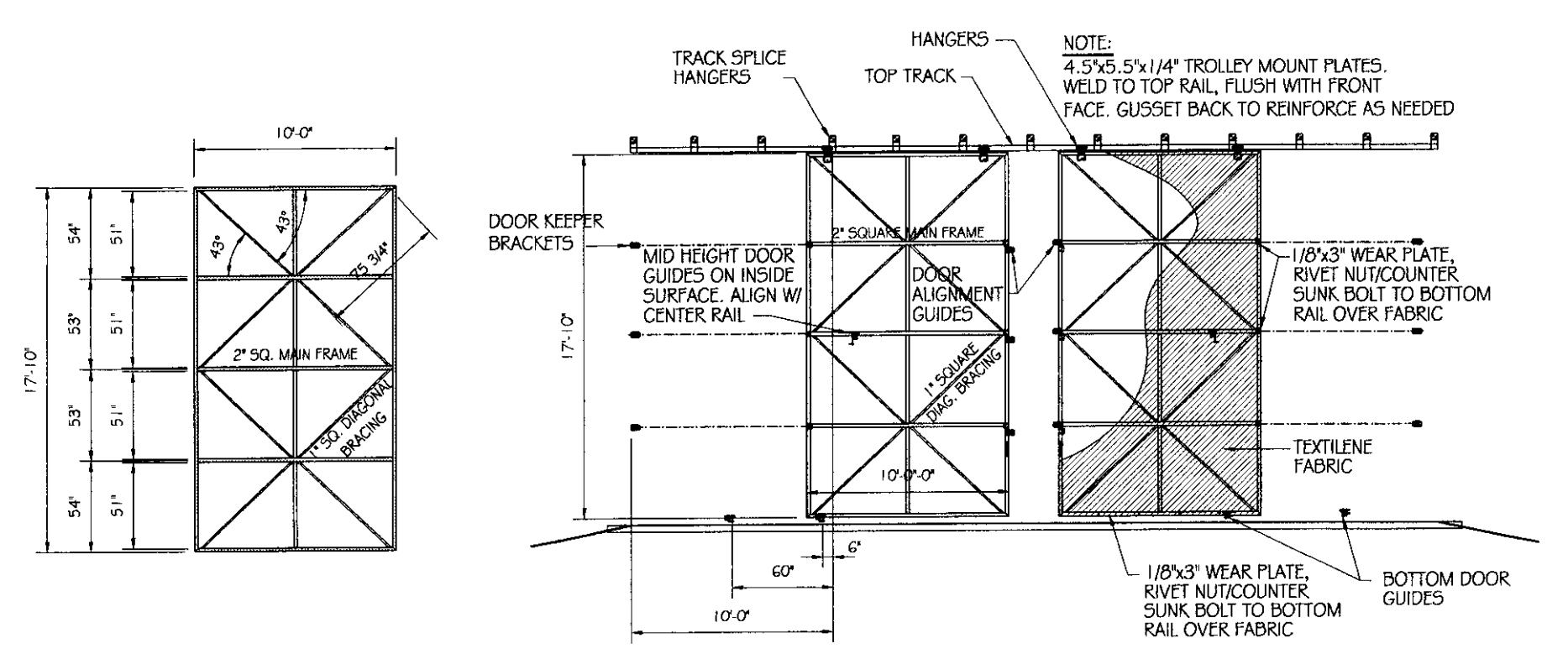
ELECTRICAL NOTES:
SEE DRAWING E-3 FOR ELECTRICAL DETAILS & SPECIFICATIONS.



NOTE:
ALL ELECTRICAL CONDUIT BELOW GRADE AND ON THE EXTERIOR OF THE BUILDING SHALL BE 1" RIGID CONDUIT. CONDUIT INSIDE THE BUILDING SHALL BE 3/4" SCH. 80 PVC.

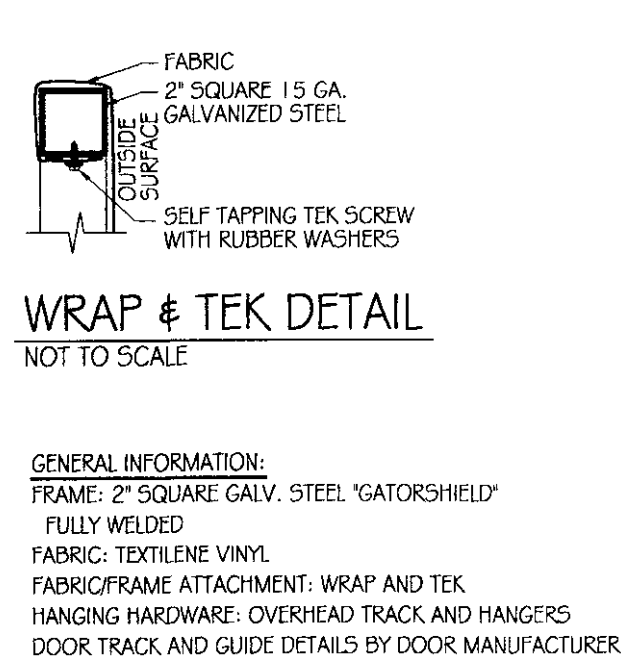


FOUNDATION PLAN
SCALE: 1/8" = 1'-0"



DOOR FRAMING DETAIL
SCALE: 1/8" = 1'-0"

DOOR DETAIL
SCALE: 1/8" = 1'-0"



DOORS TO BE TEXTILENE COVERED METAL FRAMED SLIDING DOORS DESIGNED BY OTTER CREEK AWNINGS. TO BE ASSEMBLED AND INSTALLED BY CONTRACTOR. SUBMITTAL OF SHOP DRAWING REQUIRED.

I:\mswerner\projects\AOT North Ferrisburgh\REVISED AOT 12-2-05\Drawings Recd From Consultants\State\Recd 1-18-06\64x64SaltSandShed2000.dwg, 01/18/2006 11:58:27 AM, abrown