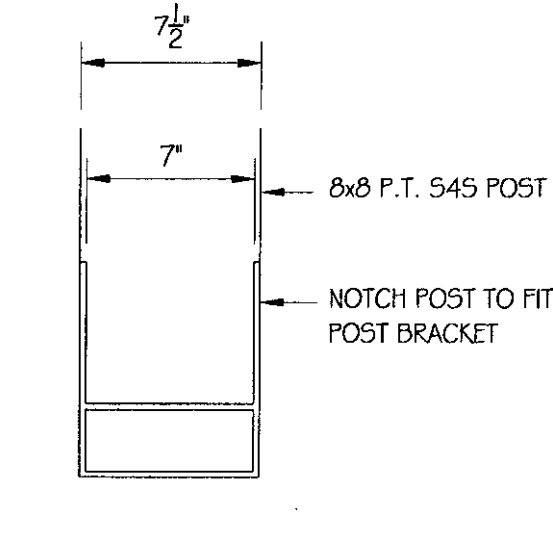
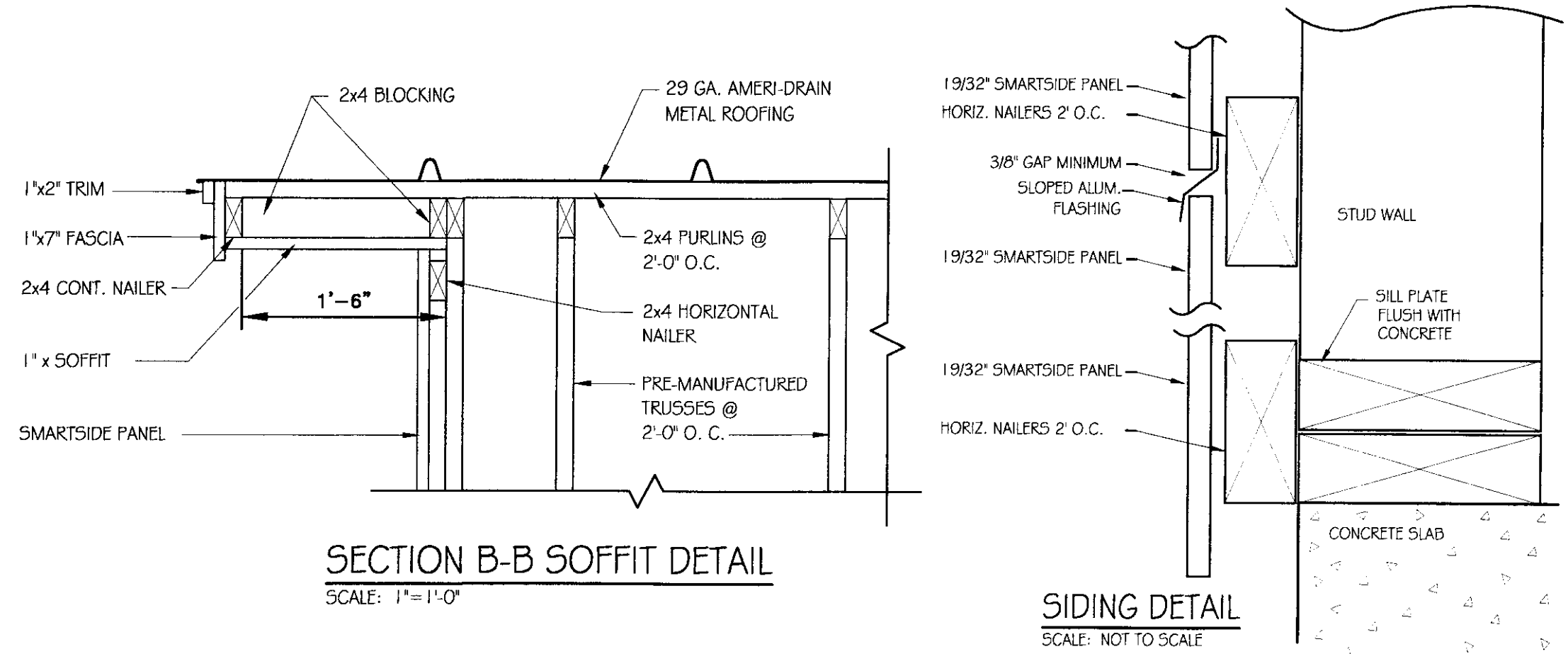


NOTE:
POST BASE TO BE FABRICATED FROM 1/4" PLATE STEEL PRIMED & PAINTED (2 COATS) BLACK BEFORE INSTALLATION

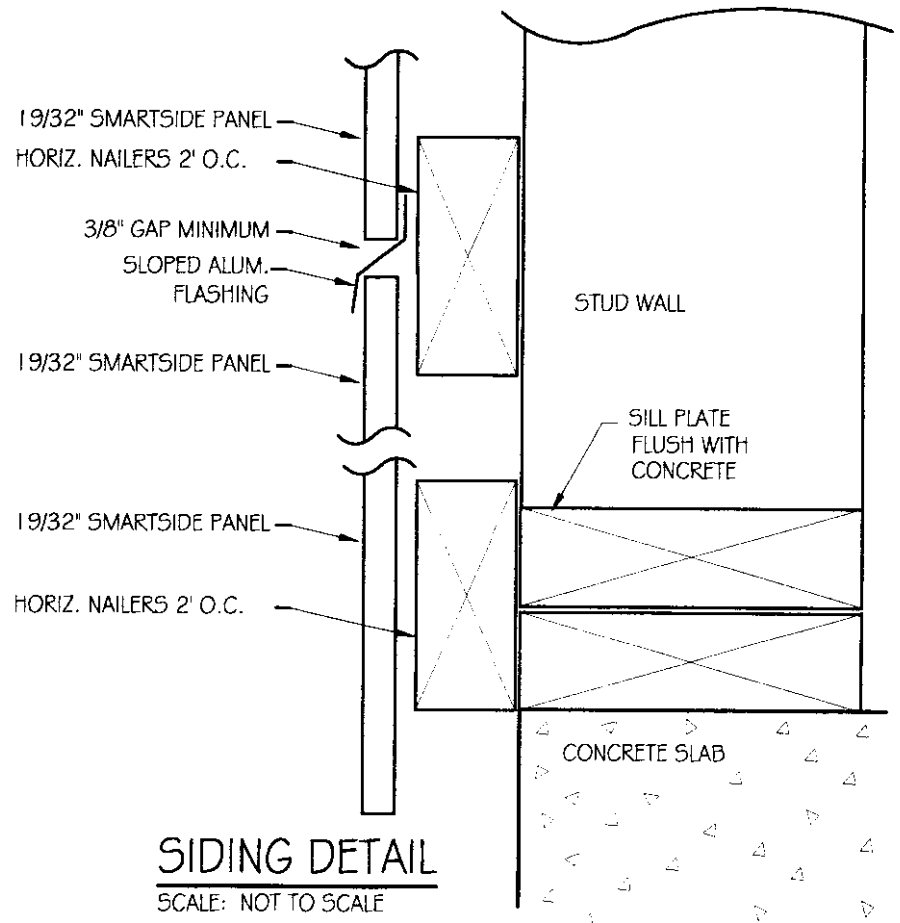
NOTE
INSIDE LAG BOLTS TO BE IN C OF POST SO THEY WILL NOT INTERFERE WITH THE OVERHEAD DOOR TRACK.



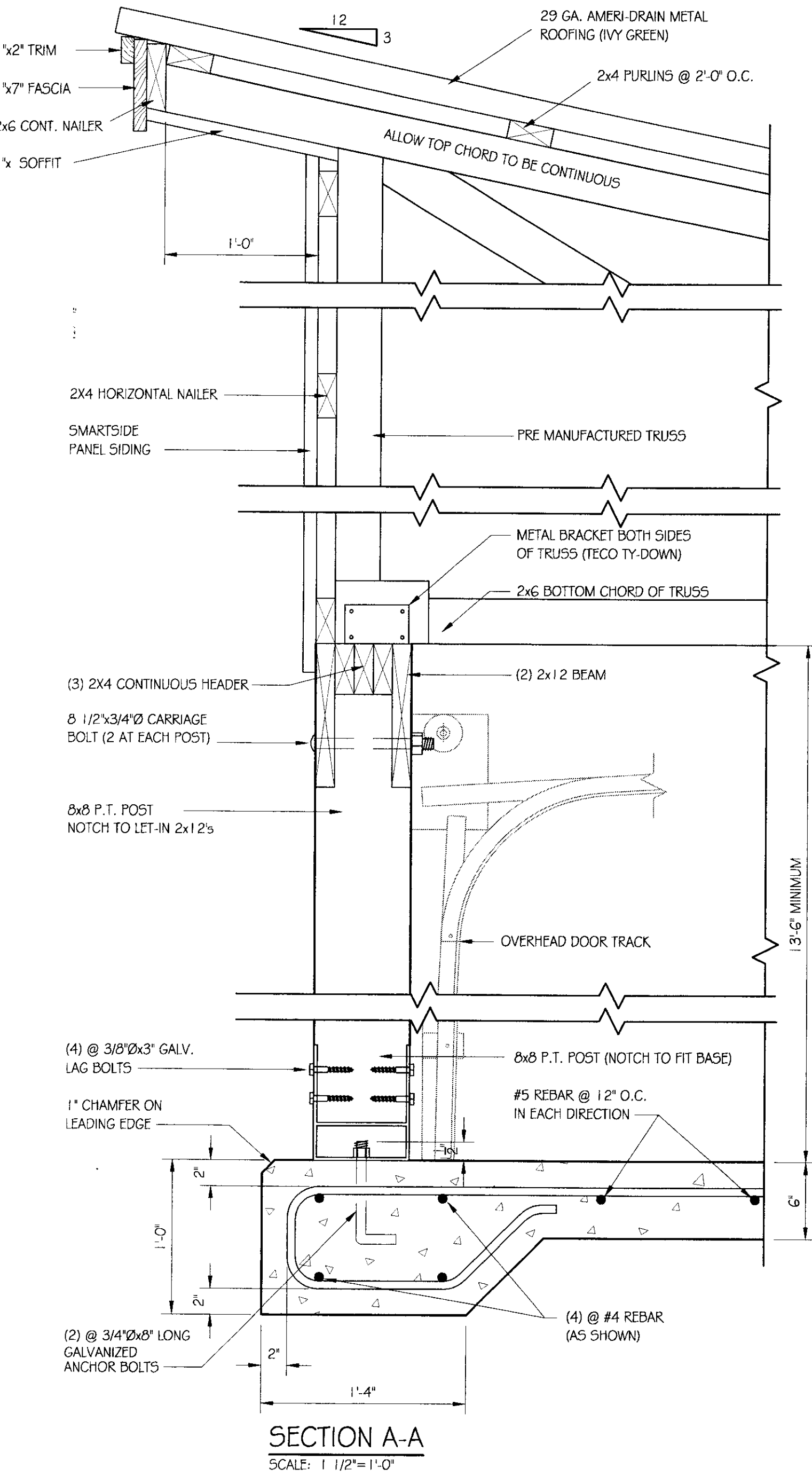
SECTION D-D
SCALE: 1 1/2" = 1'-0"



SECTION B-B SOFFIT DETAIL
SCALE: 1" = 1'-0"



SIDING DETAIL
SCALE: NOT TO SCALE



SECTION A-A
SCALE: 1 1/2" = 1'-0"

GENERAL NOTES

ALL BUILDINGS RELATED EXCAVATION, FILL, BACKFILL, COMPACTION WILL BE PERFORMED BY VTRANS AND COORDINATED WITH GENERAL CONTRACTOR.

ALL SUB BASE OF GRAVEL, COMPACTION, FINAL GRADING AND PAVING OF DRIVES AND PARKING AREAS WILL BE PERFORMED BY VTRANS AND COORDINATED WITH GENERAL CONTRACTOR.

STEEL DOOR AND FRAME NOTES:
DOOR: DOOR SHALL BE UNINSULATED 16 GAUGE METAL, 1 3/4" THICK, ZINC COATED PER ASTM 525.
FRAME: 1 1/4 GAUGE METAL, ZINC COATED
MANUFACTURER: STEEL KRAFT OR APPROVED EQUAL.
HARDWARE: SEE SPECIFICATIONS

ELECTRICAL NOTES:
SEE DRAWING E-3 FOR ELECTRICAL DETAILS & SPECIFICATIONS.

OVERHEAD DOOR NOTES:
SEE SPECIFICATIONS

TRUSS NOTES:
TRUSS MANUFACTURER TO PROVIDE DEPT. OF STATE BUILDINGS ENGINEER A SET OF ENGINEERED & STAMPED DRAWINGS FOR APPROVAL PRIOR TO TRUSS MANUFACTURE (ENGINEER MUST BE LICENSED IN VERMONT).
TRUSS MANUFACTURER TO PROVIDE THE CONTRACTOR WITH ALL NECESSARY INSTRUCTIONS FOR PROPER TRUSS INSTALLATION, ANCHORAGE, BRACING, LIFTING, ETC..
TRUSS DESIGN LOADS IN ACCORDANCE WITH THE 1987 B.O.C.A. FOR VERMONT.

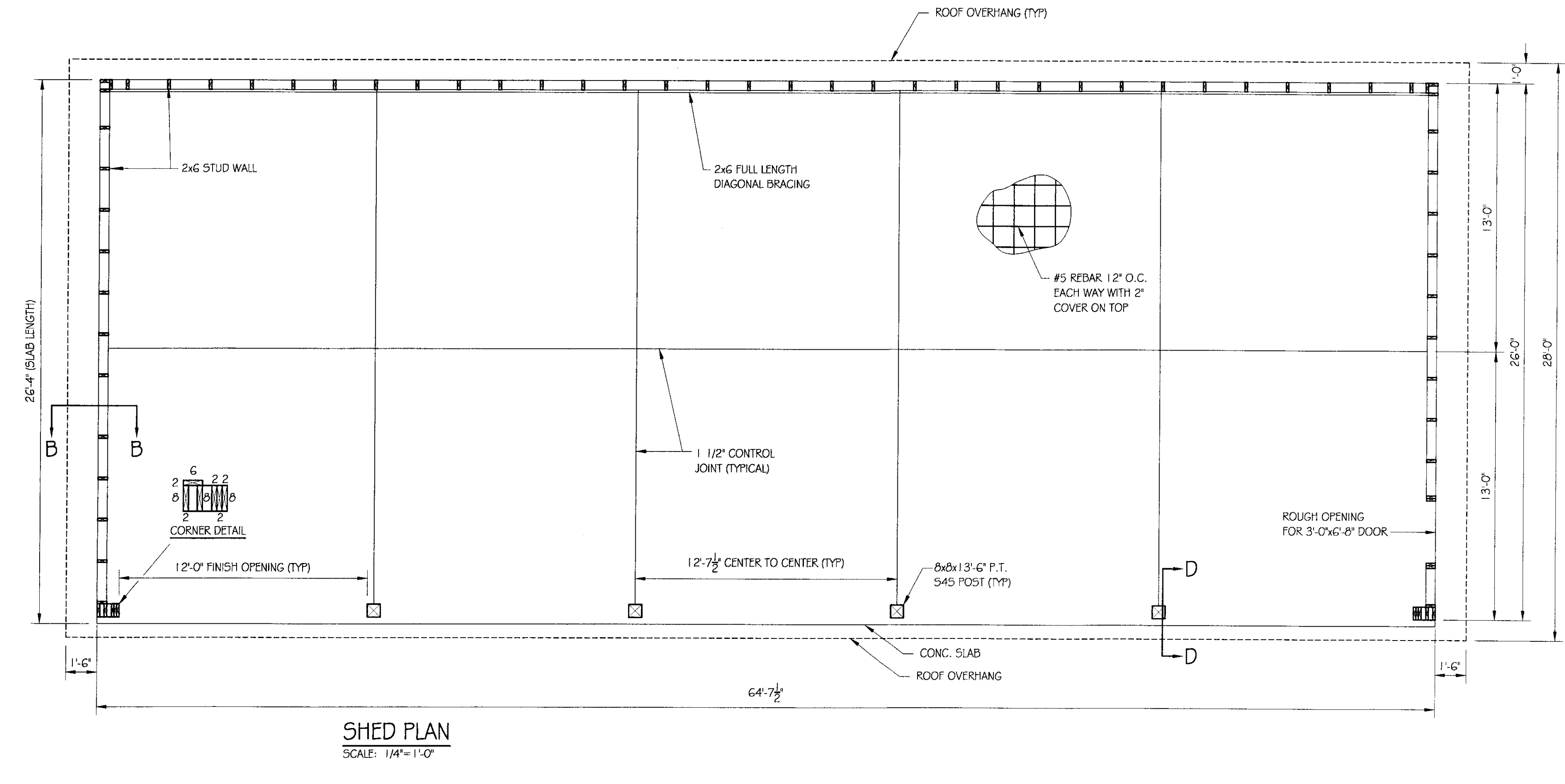
MINIMUM LOADS:
LIVE - PER 1987 B.O.C.A. FOR VERMONT (40 PSF MIN.)
DEAD - AS CALCULATED FROM TRUSS & ROOF MATERIAL
5 PSF ON BOTTOM CORD
WIND - 25 PSF
DIAGONAL WIND BRACING PER TRUSS MANUFACTURER.

LUMBER NOTES:
FRAMING MEMBERS TO BE KILN DRIED CONSTRUCTION GRADE SPRUCE 54S 19% MOISTURE CONTENT.
PLATES & NAILERS IN CONTACT WITH CONCRETE TO BE CCA 0.40 TREATED TRIM, AND SOFFIT MATERIAL TO BE NATIVE ROUGH SAWN WHITE PINE, SPRUCE, EASTERN FIR OR RED PINE.
ALL FASTENERS TO BE GALVANIZED AND SHALL BE APPROPRIATELY SIZED.

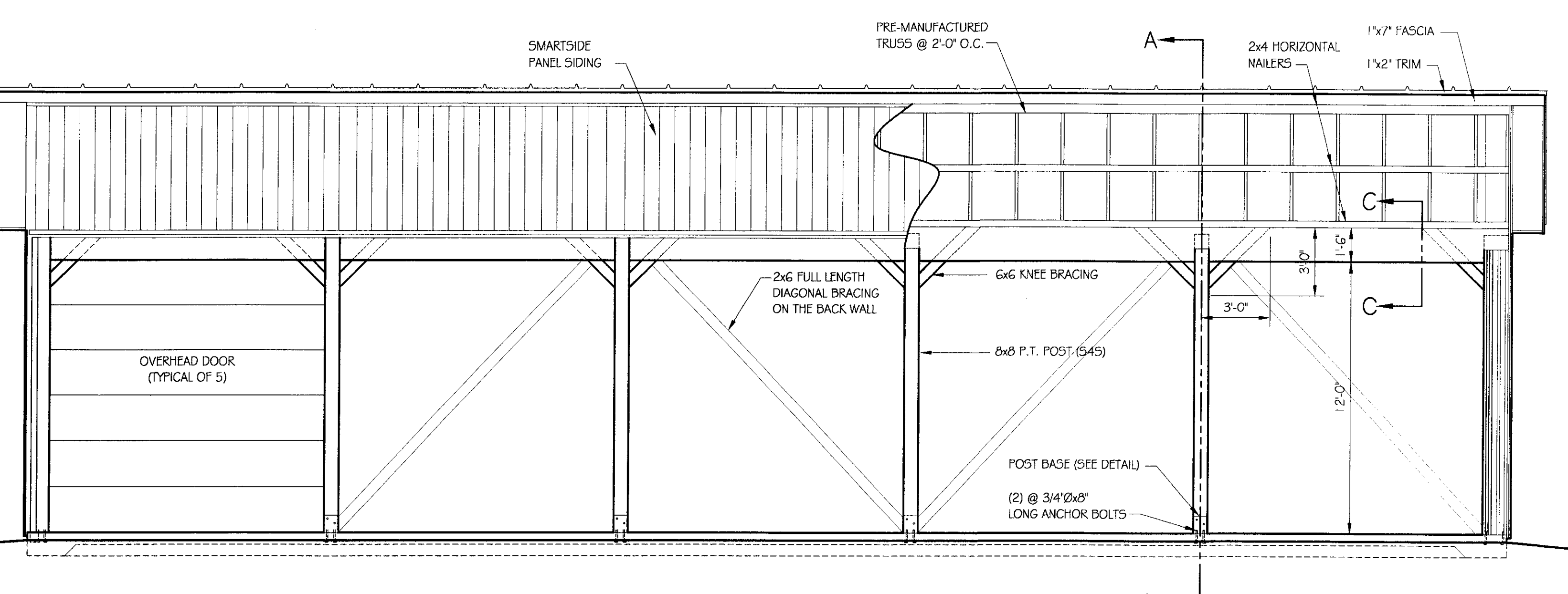
SMARTSIDE PANEL NOTES:
8d GALVANIZED NAILS FOR 19/32" PANELS PENETRATING STUDS 1 1/2" NAIL SPACING; 6" MAX. PERIMETER, 12" MAX FIELD, 3/8" MIN. FROM EDGES. NAILS TO BE SET FLUSH. DO NOT COUNTERSINK NAILS INTO PANEL. MINIMUM 3/8" GAP REQUIRED AT HORIZONTAL JOINTS OF PANEL SIDING. SMARTSIDE PANEL SIDING MUST NOT CONTACT CONCRETE. 1/2" CLEARANCE MIN. SMARTSIDE PANEL SIDING MUST NOT CONTACT GROUND. 6" CLEARANCE MIN. PAINT ALL PANEL SURFACES INCLUDING BOTTOM EDGES
ADDITIONAL SMARTSIDE PANEL INSTALLATION INFO CAN BE FOUND AT WWW.SMARTSIDEONLINE.COM OR CALL 800-648-6893

FINISH NOTES:
ROOFING COLOR: IVY GREEN (BY AMERI-DRAIN) OR AS DIRECTED BY ENGINEER
PAINT TO BE OLYMPIC ACRYLIC LATEX SATIN FINISH .
COLOR TO BE DETERMINED BY ENGINEER.
APPLY PAINT AS SOON AS POSSIBLE AFTER SIDING IS INSTALLED.
PRE-PRIME ALL ROUGH SAWN FINISH MATERIAL PRIOR TO INSTALLATION. APPLY TWO COATS OF FINISH.

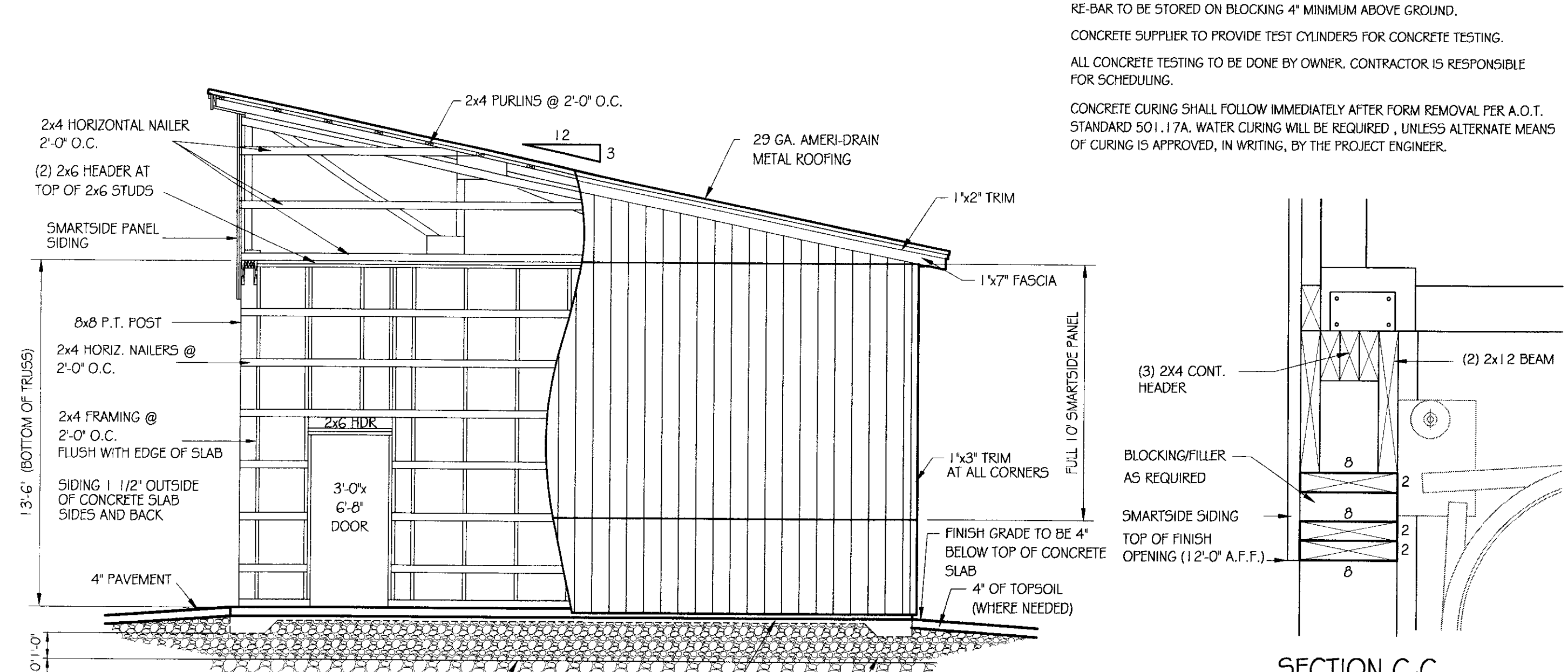
CONCRETE NOTES: PER A.O.T. STANDARD.
CONCRETE STRENGTH TO BE 3500 PSI
CONCRETE FINISH TO BE FLOATED.
CONCRETE TO BE CLASS "B" PER AOT STANDARD SPECIFICATIONS TABLE 501.03A WITH 5% ± 1% AIR ENTRAINMENT, AND 2'-4" SLUMP.
RE-BAR TO BE CONTINUOUS THROUGH CONSTRUCTION JOINTS.
CONTRACTOR TO LEAVE NO METAL WITHIN 1" OF SURFACE. USE 1" DEEP PLASTIC CONES AT ALL TIES AND PLUG ALL THE HOLES WITH AN APPROVED NON-SHRINK GROUT.
ALL RE-BAR TO BE GRADE 60 WITH 3" CLEARANCE ON ALL SIDES UNLESS NOTED OTHERWISE.
RE-BAR TO BE STORED ON BLOCKING 4" MINIMUM ABOVE GROUND.
CONCRETE SUPPLIER TO PROVIDE TEST CYLINDERS FOR CONCRETE TESTING.
ALL CONCRETE TESTING TO BE DONE BY OWNER. CONTRACTOR IS RESPONSIBLE FOR SCHEDULING.
CONCRETE CURING SHALL FOLLOW IMMEDIATELY AFTER FORM REMOVAL PER A.O.T. STANDARD 501.17A. WATER CURING WILL BE REQUIRED, UNLESS ALTERNATE MEANS OF CURING IS APPROVED, IN WRITING, BY THE PROJECT ENGINEER.



SHED PLAN
SCALE: 1/4" = 1'-0"



FRONT ELEVATION
SCALE: 1/4" = 1'-0"

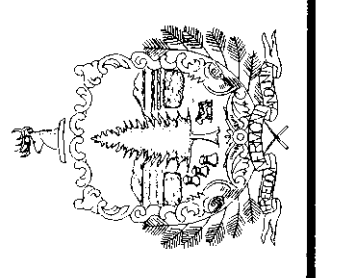


SIDE ELEVATION
SCALE: 1/4" = 1'-0"

SECTION C-C
SCALE: 1 1/2" = 1'-0"



STATE OF VERMONT
Department of Buildings
and General Services
Agency of Administration
Montpelier, Vermont



AGENCY OF TRANSPORTATION
NORTH FERRISBURGH MAINTENANCE FACILITY
NEW 26' x 64' STORAGE SHED
PLAN, DETAILS AND ELEVATIONS

REVISIONS	AS NOTED	DATE	DRAWN BY	APPR. BY
		JANUARY 4, 2006	S.K. Jarawicz	M. MILLER

AGENCY OF TRANSPORTATION
NEW 26' x 64' STORAGE SHED
PLAN, DETAILS AND ELEVATIONS

CS-1