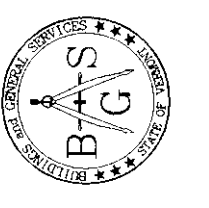
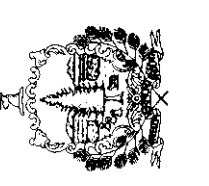


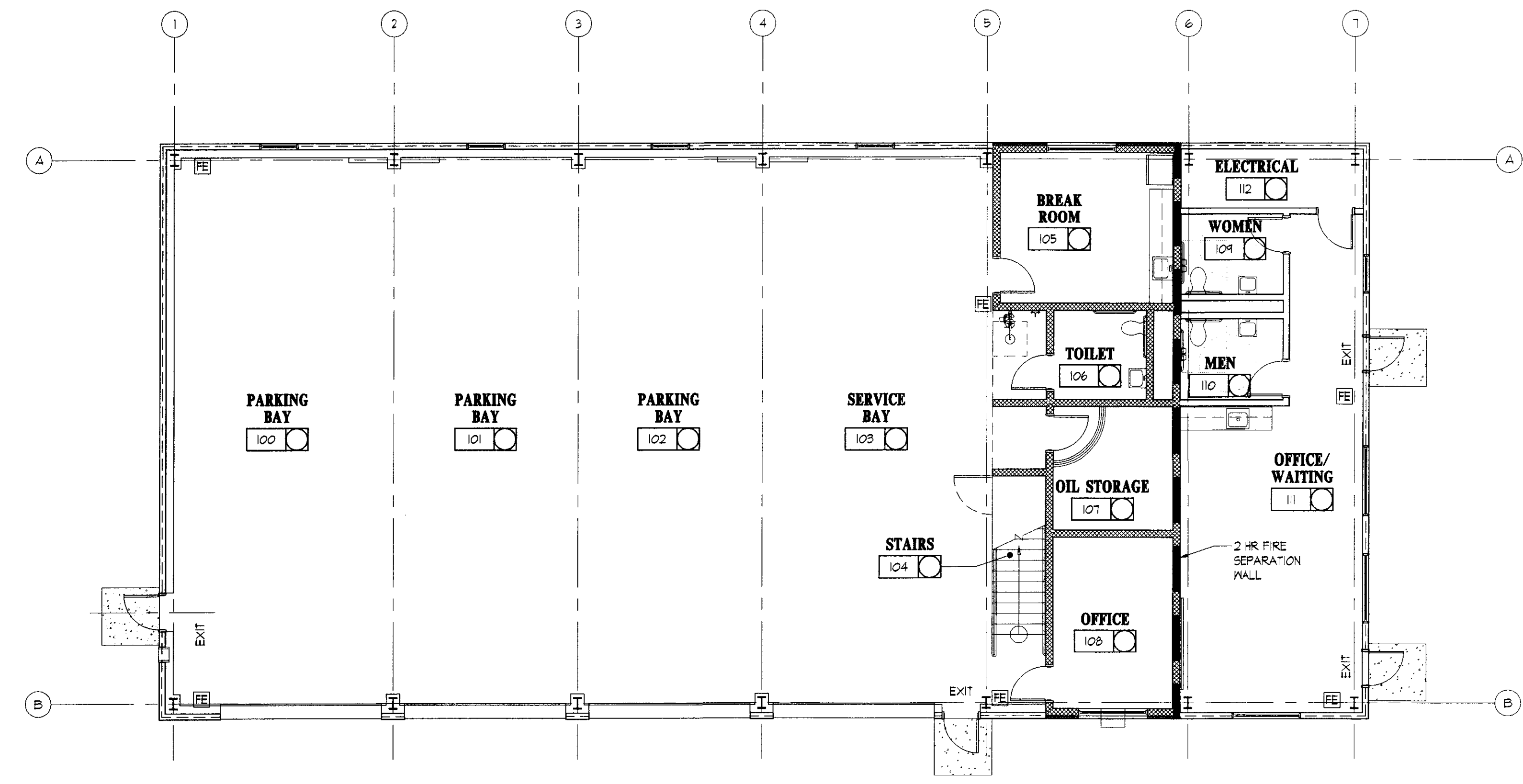
**D&W**  
 DORE AND WHITTELLER, INC.  
 Architects • Project Managers



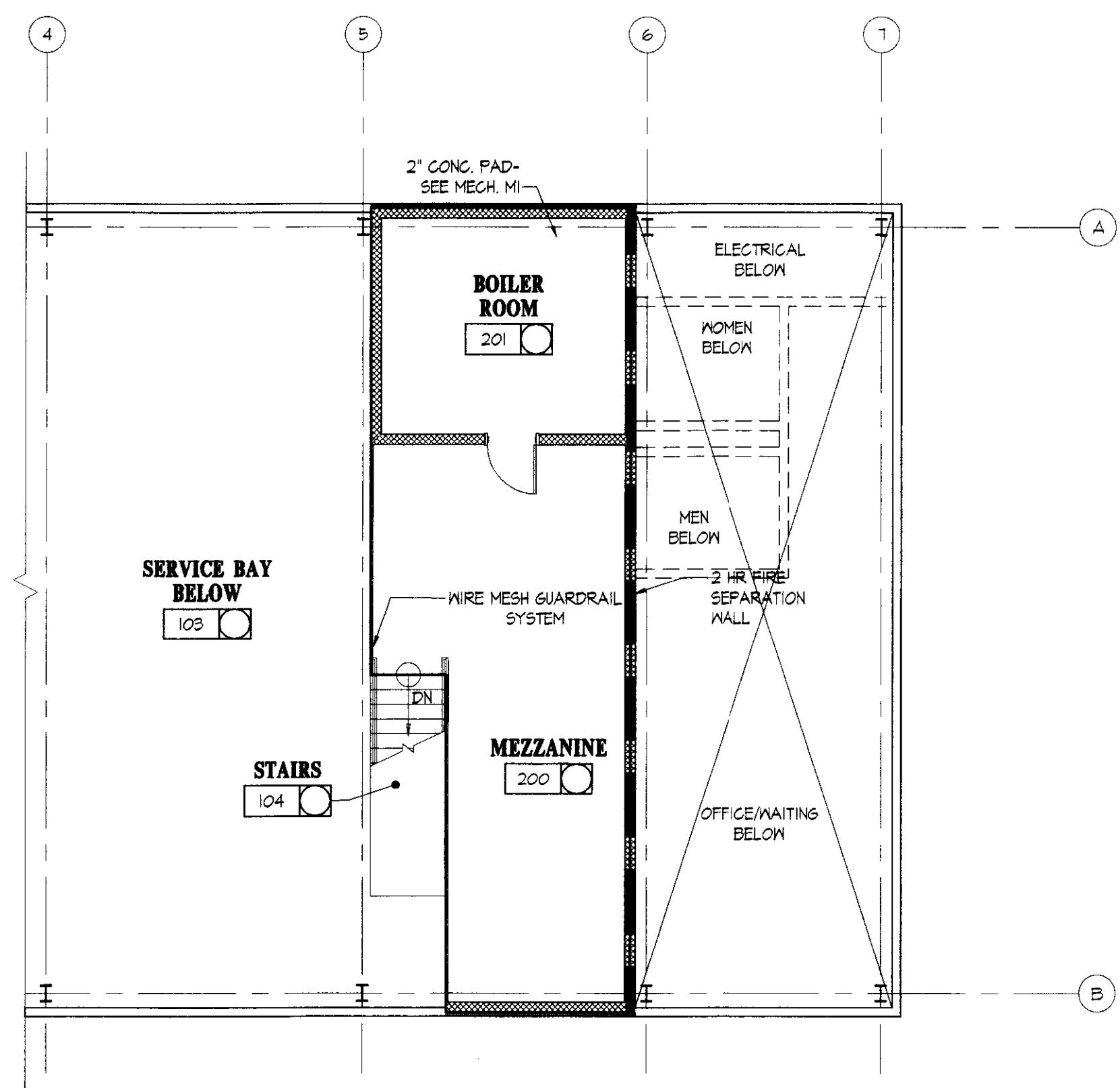
STATE OF VERMONT  
 DEPARTMENT OF BUILDINGS  
 AND GENERAL SERVICES  
 AGENCY OF ADMINISTRATION  
 MONTPELIER, VERMONT



AGENCY OF TRANSPORTATION  
 N. FERRISBURGH MAINTENANCE FACILITY  
 NORTH FERRISBURGH VERMONT



**1 MAIN LEVEL PLAN**  
 1/8" = 1'-0"



**2 UPPER LEVEL PLAN**  
 1/8" = 1'-0"

**BOCA BUILDING REQUIREMENTS - 1996 EDITION**

OCCUPANCY TYPE: S1 - STORAGE, ORDINARY HAZARD

CONSTRUCTION TYPE 5B, UNPROTECTED  
 ALLOWED HEIGHT AND AREA LIMITATIONS  
 S1 = 1 STORIES AT 20'  
 BASIC S1 = 4200 SF  
 ADDITIONAL AREA FOR FRONTAGE = 6300 SF  
 TOTAL ALLOWABLE S1 = 10500 SF  
 DESIGNED GROSS AREA  
 MAIN LEVEL: 5783 SF  
 UPPER (MEZZANINE) LEVEL:  
 S1 = 691 SF

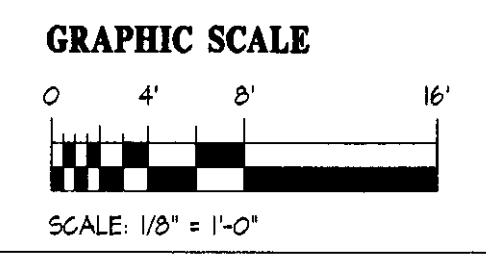
CONSTRUCTION REQUIREMENTS  
 FIRE SEPARATION WALLS 3 HOUR (PER NFPA 88B) BETWEEN OCCUPANCIES  
 FIRE ENCLOSURES EXITS AND STAIRWAYS 1 HOUR  
 EXIT ACCESS CORRIDORS 0 HOURS (OCCUPANT LOAD LESS THAN 30)  
 INTERIOR BEARING WALLS, COLUMNS, FLOOR TRUSSES 0 HOURS  
 STRUCTURAL MEMBERS SUPPORTING WALL 0 HOURS  
 FLOOR CONSTRUCTION 0 HOURS  
 ROOF CONSTRUCTION INCLUDING BEAMS, TRUSSES, ROOF DECKS 0 HOURS  
 INTERIOR DOORS AND WALLS BETWEEN PARKING BAYS AND OTHER ROOMS  
 MUST RESIST THE PASSAGE OF SMOKE (NOT RATED) PER NFPA 88B

**NFPA 101 BUILDING REQUIREMENTS - 1997 EDITION**

CLASSIFICATION - STORAGE, ORDINARY HAZARD  
 EXITS REQUIRED - MIN 2 REQUIRED  
 MAX. TRAVEL DISTANCE TO EXITS 200 FEET  
 DEAD END CORRIDORS NOT EXCEED 50 FEET  
 COMMON PATH FOR ORDINARY HAZARD 50 FEET  
 CLASS "A" FINISH REQUIRED

**LEGEND**

— TWO HOUR FIRE SEPARATION WALL  
 FE AOT SUPPLIED FIRE EXTINGUISHERS



REVISIONS	SCALE: 1/8" = 1'-0"
DATE: 1/4/06	
DRAWN BY: VFW	
APPR. BY: AFB	

N. FERRISBURGH  
 MAINTENANCE GARAGE  
 CODE SHEET

F:\A01\North Ferrisburgh\REVISED AOT\12-2-05\Drawings\Working Drawings\Sheet Drawings\42-2-01.dwg, Layout1, 01/17/2006 02:28:55 PM, rferm, Oes 9600 36-length.m, pc3