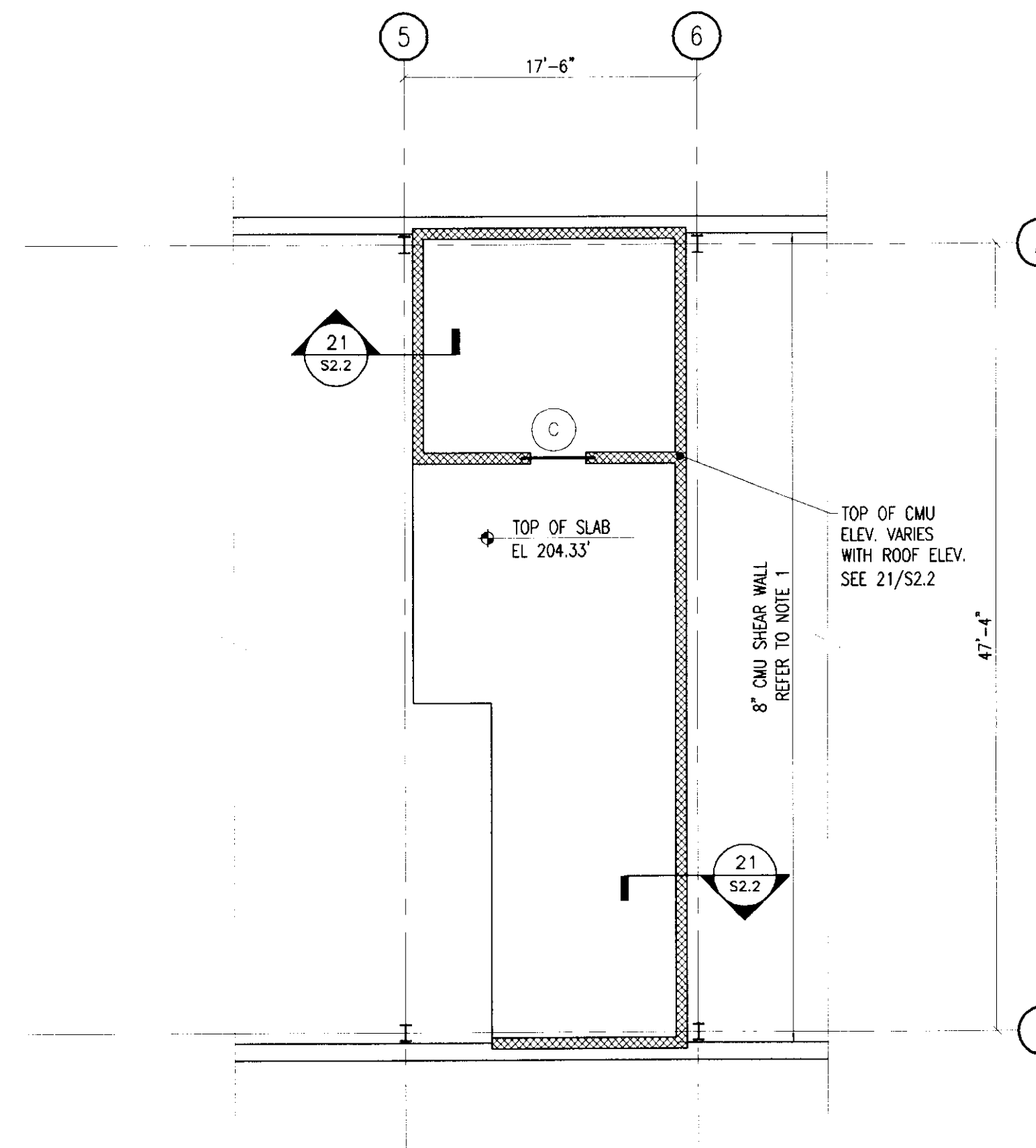


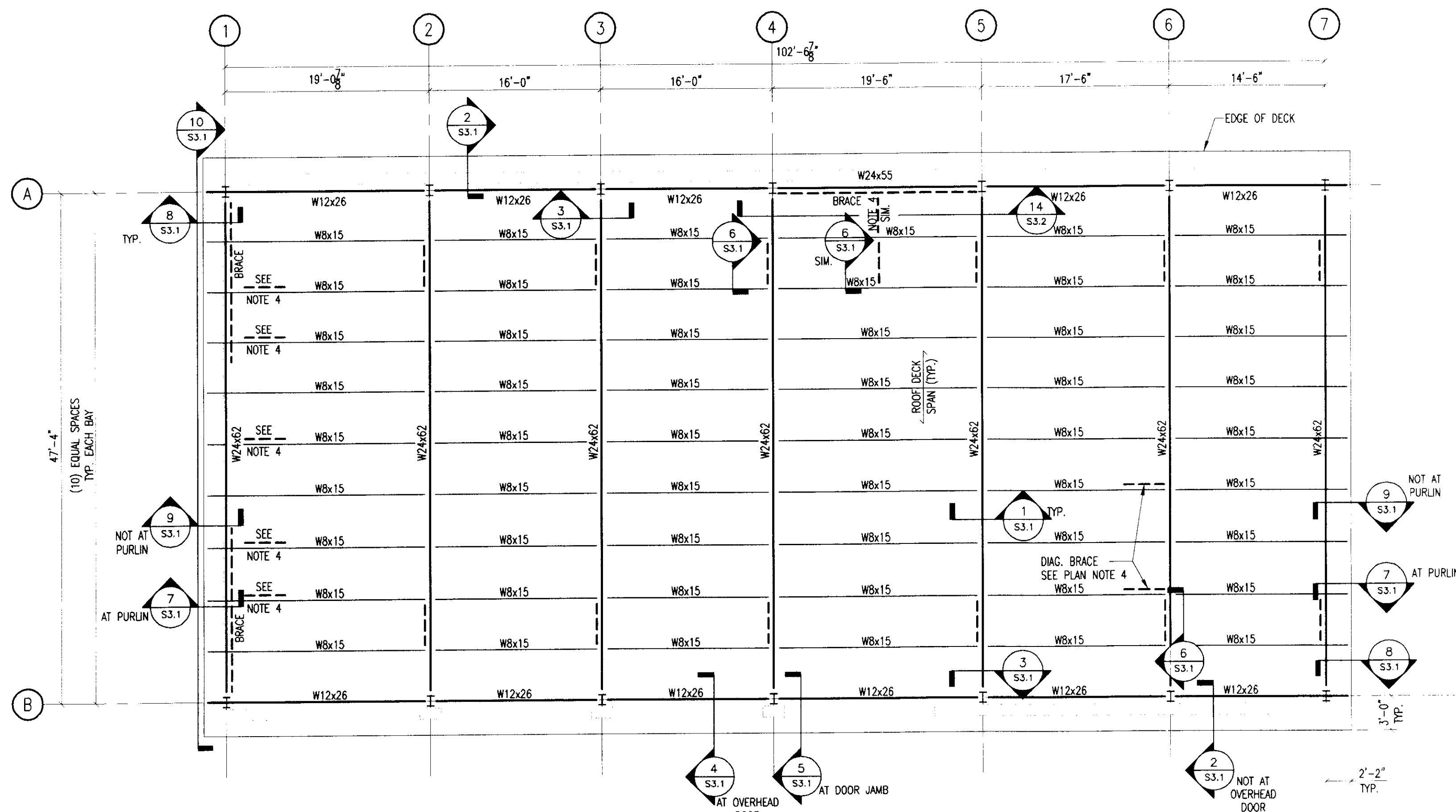
MAIN LEVEL WALL AND LINTEL PLAN

1/8" = 1'-0"



MEZZANINE LEVEL WALL AND LINTEL PLAN

1/8" = 1'-0"



ROOF FRAMING PLAN

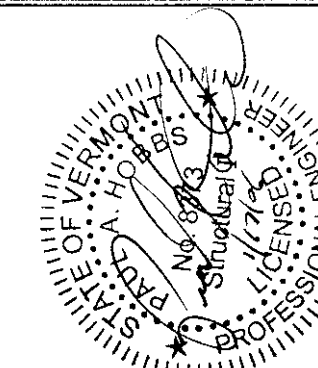
1/8" = 1'-0"

MAIN LEVEL AND MEZZANINE WALL AND LINTEL PLAN NOTES

- NOTES:
- CMU WALLS: (FULLY GROUT ALL REINFORCED CORES.)  
 INTERIOR SHEAR WALL: 8" CMU WITH #5'S AT 24" oc.  
 INTERIOR PARTITION WALLS: 8" CMU WITH #4'S AT 24" oc.
  - INSTALL CONTINUOUS BOND BEAM AT MIDDLE OF WALL HEIGHT AND TOP OF ALL WALLS WITH (2) #4'S CONTINUOUS, AND STANDARD No. 8 DUR-O-WALL TRUSS REINFORCEMENT EVERY OTHER COURSE (EVERY 16"), INSTALL AND SPLICE PER MANUFACTURER'S DIRECTIONS. GROUT FULLY ALL CORES ADJACENT TO OPENINGS.
  - CMU WALL CONTROL JOINTS TO BE LOCATED AT 25'-0" oc. MAX.
  - LINTELS IN MASONRY WALL OPENINGS:
    - (A) LINTEL "A" - SEE DETAIL 22/S2.2
    - (B) LINTEL "B" - SEE DETAIL 22/S2.2
    - (C) LINTEL "C" - SEE DETAIL 22/S2.2
    - (D) LINTEL "D" - SEE DETAIL 22/S2.2
  - OTHER LINTELS:
    - (1) LINTEL "1" - SEE DETAIL 22/S2.2
    - (2) LINTEL "2" - SEE DETAIL 22/S2.2
    - (3) LINTEL "3" - SEE DETAIL 22/S2.2
    - (4) LINTEL "4" - SEE DETAIL 22/S2.2
    - (5) LINTEL "5" - SEE DETAIL 22/S2.2
    - (6) LINTEL "6" - SEE DETAIL 22/S2.2
    - (7) LINTEL "7" - SEE DETAIL 22/S2.2
    - (8) LINTEL "8" - SEE DETAIL 22/S2.2
    - (9) LINTEL "9" - SEE DETAIL 22/S2.2
    - (10) LINTEL "10" - SEE DETAIL 22/S2.2
  - MEZZANINE SLAB: 8" PRE-CAST HOLLOW CORE SLAB WITH 2" CONCRETE TOPPING. TOPPING TO HAVE FIBROUS CONCRETE REINFORCEMENT, AS MANUFACTURED BY FIBERMESH COMPANY OR APPROVED EQUIVALENT. ADD FIBROUS CONCRETE REINFORCEMENT AT A RATE OF 1.5 lbs. PER CUBIC YARD OF CONCRETE, PER MANUFACTURER'S INSTRUCTIONS. TOP OF TOPPING ELEVATION = TOP OF SLAB ELEV PROVIDED ON PLAN. HOLLOW CORE SLAB TO BE DESIGNED FOR A LIVE LOAD CAPACITY OF 125 psf.

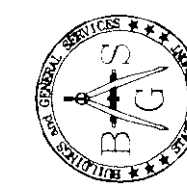
ROOF FRAMING PLAN NOTES

- NOTES:
- ROOF PITCH IS APPROXIMATELY 1/4" PER 1'-0" FROM B LINE TO A LINE.  
 TOP OF COLUMNS ON COLUMN LINE "A" AT ELEVATION 212.16' FT.  
 TOP OF COLUMNS ON COLUMN LINE "B" AT ELEVATION 213.20' FT.
  - THE ROOF DECK (SHEAR DIAPHRAGM) SHALL BE 1 1/2" TYPE B 20 Gg. STEEL DECKING WITH A 36/4 WELD PATTERN (5/8" WELDS) AND TWO SIDELAP FASTENERS PER SPAN. (REFER TO SPECIFICATIONS.)
  - ALL STEEL BEAM CONNECTIONS TO BE SIZED TO MEET OR EXCEED THE MINIMUM REACTION SHOWN.  
 USE 8.0 kips MINIMUM WHERE REACTION NOT SPECIFIED.  
 USE MINIMUM 2 BOLT CONNECTION FOR W8 PURLINS AND W12 BEAMS.
  - BRACE BOTTOM FLANGE OF W24 BEAM AT LOCATIONS SHOWN ON PLAN WITH (1) L3x3x1/4". SLOPE BRACE 1/2.



ENGINEERING VENTURES INC  
 208 Flynn Avenue, Suite 2A  
 Ferrisburgh, VT 05401  
 Phone: (802) 853-8308  
 Fax: (802) 853-8308  
 Email: info@engventures.com

D&W  
 ROSS AND WELTNER, INC.  
 ARCHITECTS • PROJECT MANAGERS



STATE OF VERMONT  
 DEPARTMENT OF BUILDINGS  
 AND GENERAL SERVICES  
 AGENCY OF ADMINISTRATION  
 MONTPELIER, VERMONT



AGENCY OF TRANSPORTATION  
 N. FERRISBURGH MAINTENANCE FACILITY  
 NORTH FERRISBURGH VERMONT

REVISIONS	SCALE: 1/8" = 1'-0"
DATE: 01/04/06	
DRAWN BY: JML	
APPR. BY:	

N. FERRISBURGH  
 MAINTENANCE GARAGE  
 WALL, LINTEL, and Roof FRAMING PLAN