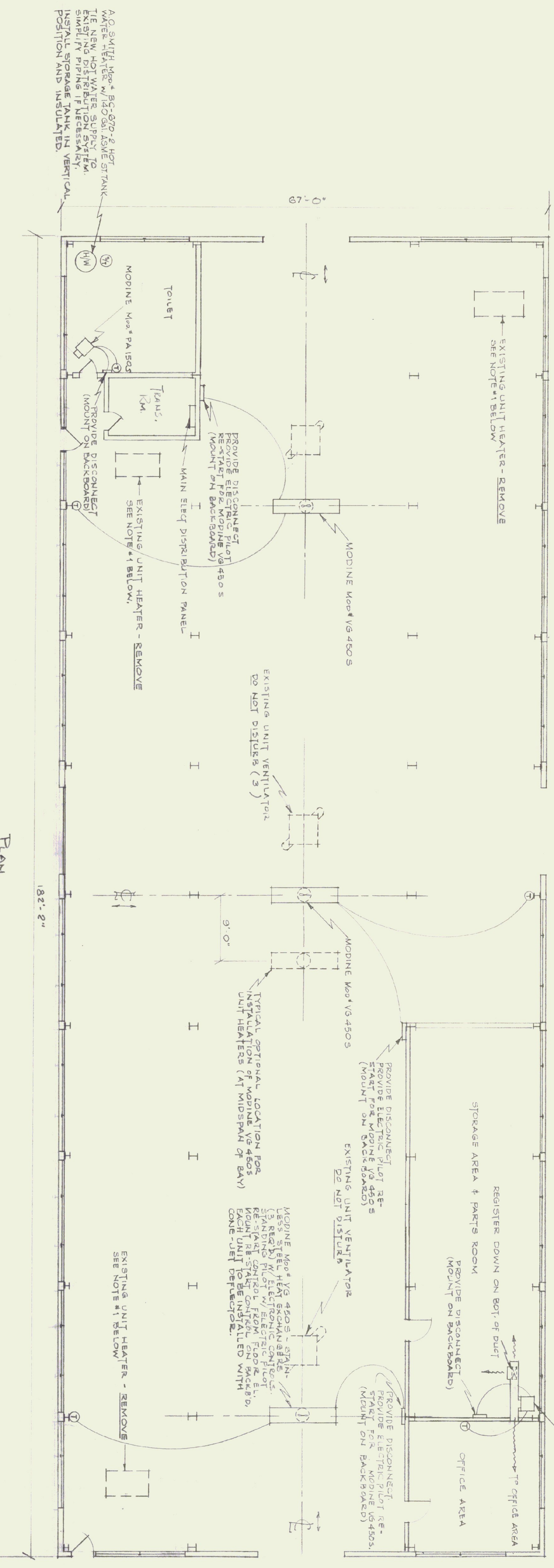


Typical Section  
Scale 1/8" = 1'-0"



Plan  
Scale 1/8" = 1'-0"

- GENERAL CONDITIONS AND INSTRUCTIONS
1. REMOVE ALL EXISTING UNIT HEATERS. (THESE ARE TO REMAIN IN THE PROPERTY OF THE OWNER.) SEE SPECIFICATIONS.
  2. REMOVE ALL CONDENSATE RETURN PIPE WITHIN GARAGE BUILDING.
  3. CONTRACTOR SHALL INSTALL PROPER NUMBER AND SIZE CIRCUIT BREAKER IN M.D.B.R. FOR EACH APPLIANCE.
  4. EACH THERMOSTAT (T) IS TO BE MOUNTED ON GRAY PAINTED PLYWOOD PANEL, MFG. HT. 5'-6" ABOVE FLOOR.
  5. ALL HANGERS, HANGER MATERIALS, BLACK IRON GAS PIPING INCLUDING JOINTS, THREADS ETC. SHALL BE PAINTED WITH BLACK ASPHALTUM BASED PAINT.
  6. ALL COPPER PIPING, BRASS PIPING AND COPPER HANGERS SHALL RECEIVE ONE (1) COAT OF CLEAR LACQUER.
  7. ALL PIPING SHALL BE IDENTIFIED WITH ADHESIVE BANDS IDENTIFYING THE SERVICE AND DIRECTION OF FLOW OF THE VARIOUS PIPING SYSTEMS. IDENTIFICATION BANDS SHALL BE AFFIXED TO EACH PIPE NOT LESS THAN EVERY FORTY FEET (40') WITH NO LESS THAN ONE (1) BAND PER PIPE. NAME OF SERVICE SHALL BE PRINTED IN BLACK LETTERS ON A LIGHT BACKGROUND, USE TWO (2) INCH LETTERS FOR PIPE SIZES THREE (3) INCHES AND LARGER AND ONE (1) INCH LETTERS ON TWO AND ONE HALF (2 1/2) INCH PIPE. BANDS SHALL BE INSTALLED SO THAT THEY ARE EASILY READ WITH THEIR LONG DIMENSION PARALLEL TO THE AXIS OF THE PIPE.
  8. ALL VALVES SHALL BE TAGGED AND LABELED AND A TYPEWRITTEN MASTER LIST PREPARED BY THE CONTRACTOR.

SYMBOLS  
T = THERMOSTAT

MODINE Mod. # BA 2255 STAINLESS STEEL HEAT EXCHANGERS & w/STANDING PILOT. INSTALLATION TO INCLUDE PLENUM, DUCTWORK, GRILLES-VERTICAL AND HORIZONTAL DAMPERS. EACH REGISTER UNIT ASSEMBLY SHALL BE LABELED MANUALLY BY CONTRACTOR. MANUAL DAMPERS AT EACH REGISTER OR GRILLE.

STATE OF VERMONT	
STATE BUILDINGS DIVISION	
DEPARTMENT OF ADMINISTRATION	
MONTPELIER, VERMONT	
LAYOUT OF NEW HEATING & HOT WATER SYSTEMS AT DISTRICT HIGHWAY GARAGE COLCHESTER, VERMONT	
DATE	DESIGNED BY
4/26/72	G. N. MASTRO
DRAWN BY	APPROVED BY
CEH	[Signature]
PAGE NO.	DWG. NO.
1 OF 1	