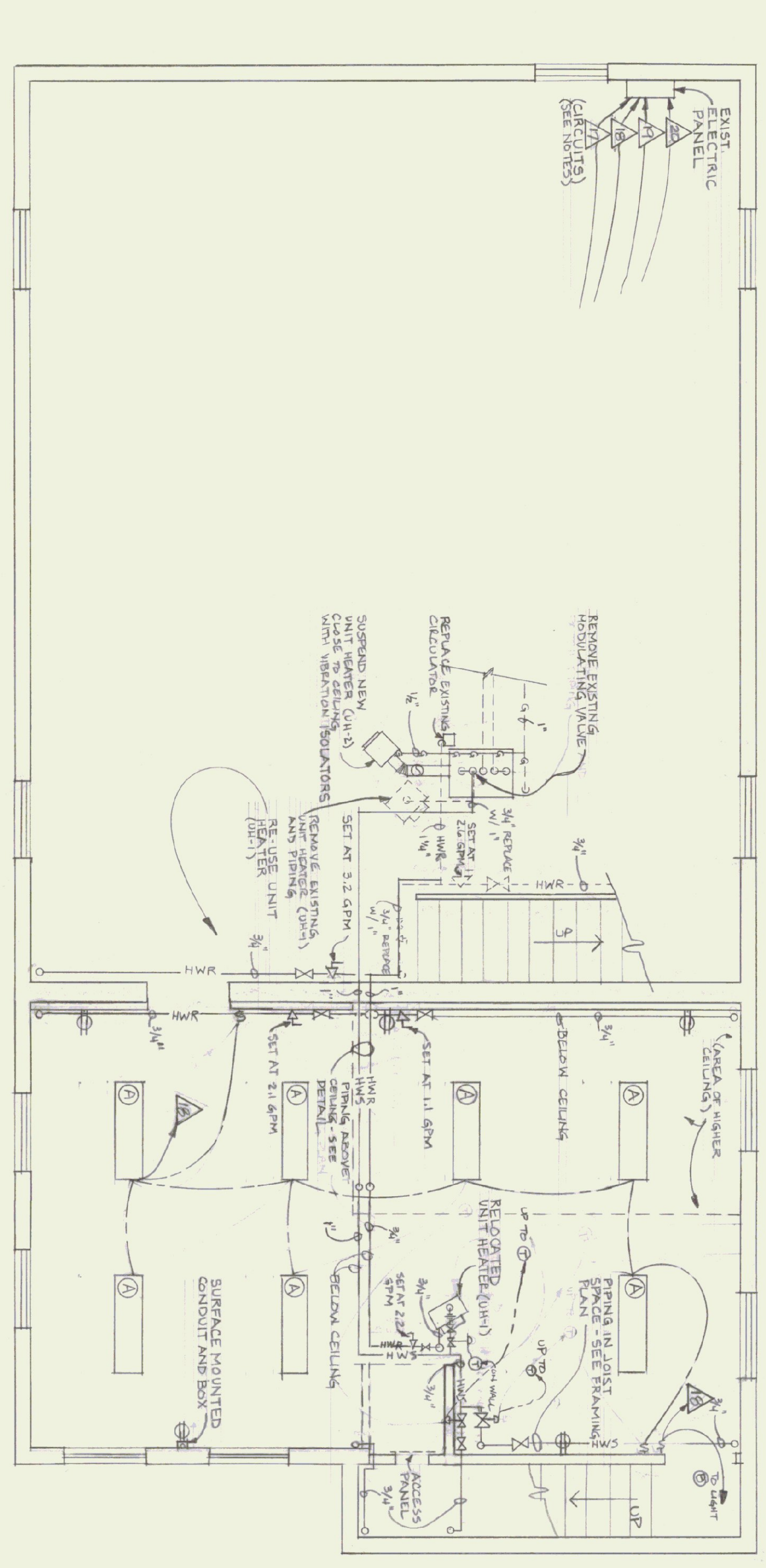
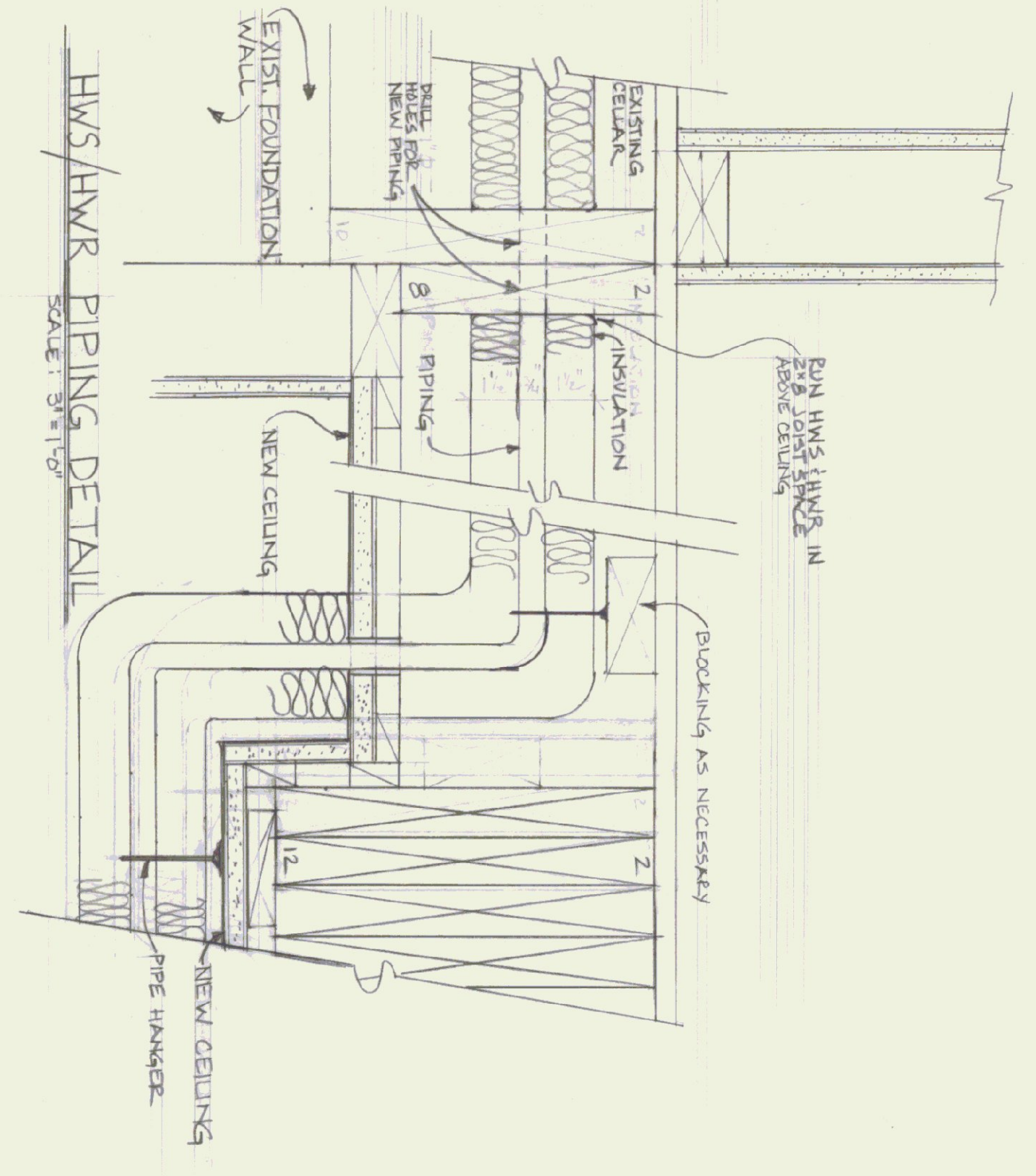


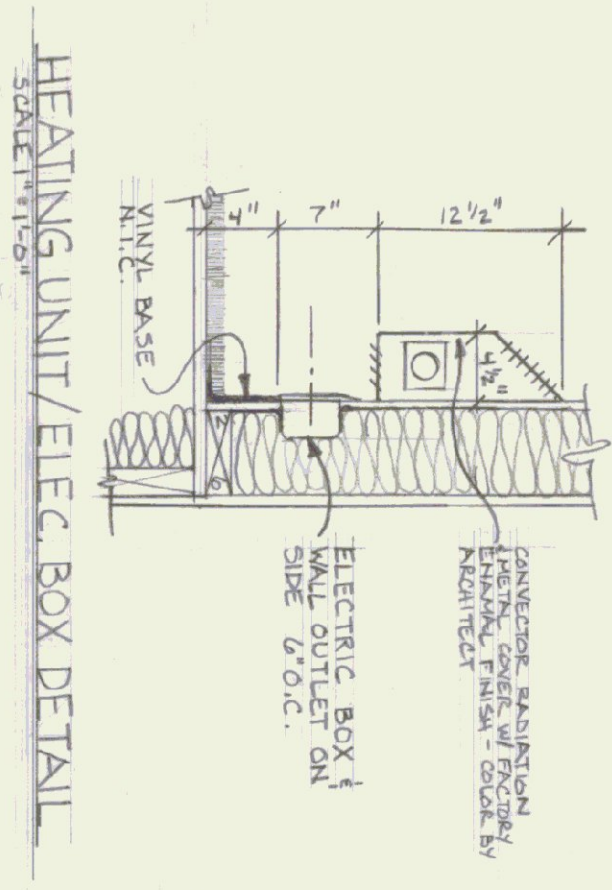
FIRST FLOOR PLAN  
SCALE: 1/4" = 1'-0"



BASEMENT PLAN  
SCALE: 1/4" = 1'-0"



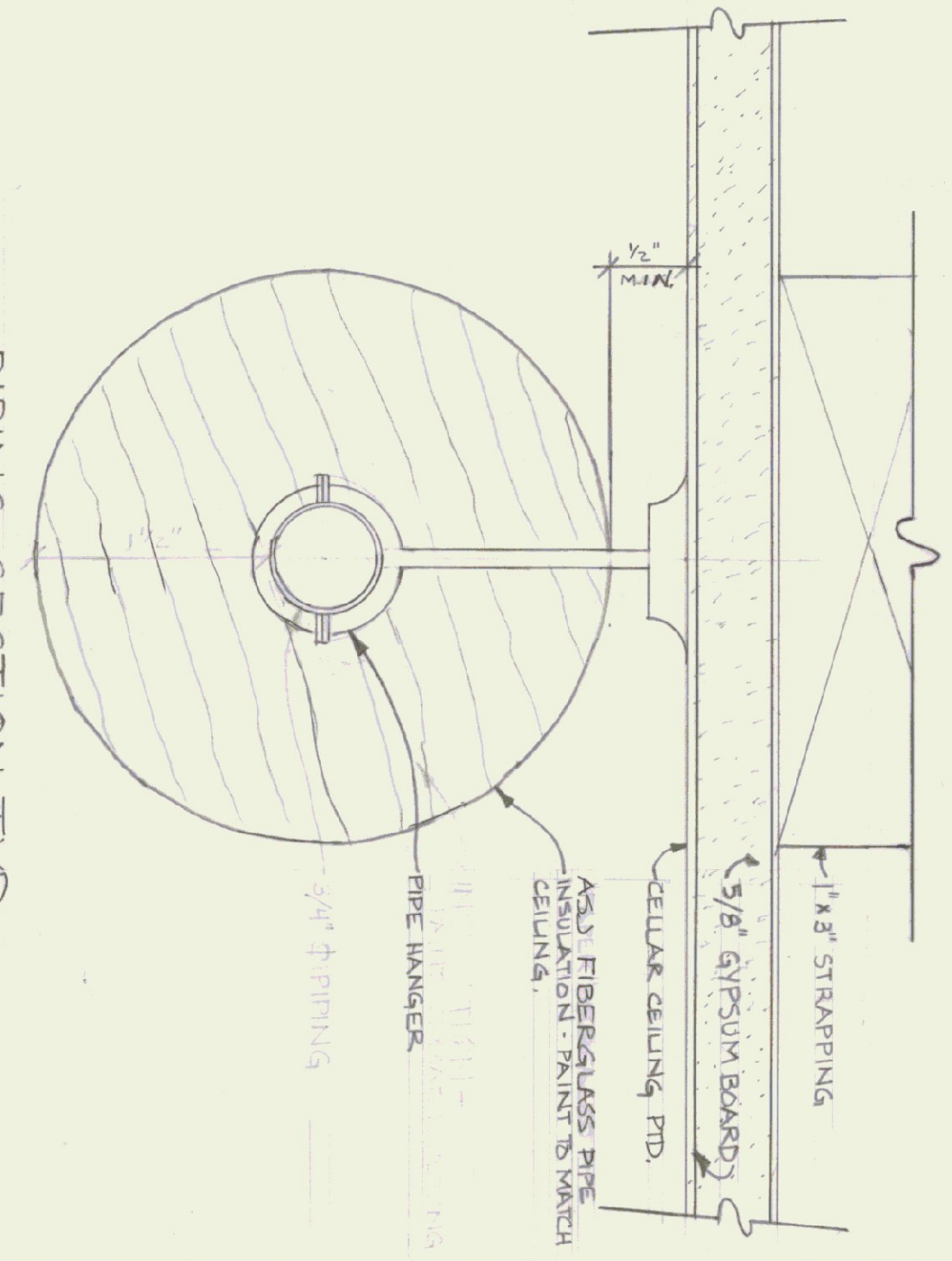
HWS/HWR PIPING DETAIL  
SCALE: 3/16" = 1'-0"



HEATING UNIT/ELEC. BOX DETAIL

**LEGEND**

- HWS HOT WATER SUPPLY
- HWR HOT WATER RETURN
- G GAS PIPING
- DP DOWN PIPING
- UP UP PIPING
- DN DOWN PIPING
- BALANCING VALVE
- MODULATING VALVE
- THERMOSTAT
- ETHERMOSTAT CONTROL WIRING
- ELECTRICAL CIRCUIT NUMBER
- DUPLEX OUTLET
- LIGHT SWITCH
- LIGHT FIXTURE TYPE (SEE NOTES)



PIPING SECTION TYP  
SCALE: FULL SIZE

**MECHANICAL/ELECTRICAL NOTES**

1. Where piping shall be Type K hard drawn copper tubing, ASTM B16, it shall be installed in accordance with the applicable code requirements and shall be supported by hangers and brackets in accordance with the applicable code requirements.
2. Where piping shall be Schedule 40 black steel, ASTM A133 or ASTM A139, it shall be installed in accordance with the applicable code requirements.
3. Where piping shall be Schedule 40 black steel, ASTM A133 or ASTM A139, it shall be installed in accordance with the applicable code requirements.
4. Provide cross braces placed symmetrically on all piping passing through structural steel.
5. Piping shall be 1/2" thick fiberglass pipe insulation with a minimum thickness of 1/2". Insulation shall be applied in accordance with the applicable code requirements.
6. Where piping shall be 1/2" thick fiberglass pipe insulation with a minimum thickness of 1/2", it shall be applied in accordance with the applicable code requirements.
7. Where piping shall be 1/2" thick fiberglass pipe insulation with a minimum thickness of 1/2", it shall be applied in accordance with the applicable code requirements.
8. Where piping shall be 1/2" thick fiberglass pipe insulation with a minimum thickness of 1/2", it shall be applied in accordance with the applicable code requirements.
9. Where piping shall be 1/2" thick fiberglass pipe insulation with a minimum thickness of 1/2", it shall be applied in accordance with the applicable code requirements.
10. Where piping shall be 1/2" thick fiberglass pipe insulation with a minimum thickness of 1/2", it shall be applied in accordance with the applicable code requirements.

**GENERAL:**

- a. All electrical controls, valves, wiring and thermostats to be installed in accordance with the applicable code requirements.
- b. All electrical controls, valves, wiring and thermostats to be installed in accordance with the applicable code requirements.
- c. All electrical controls, valves, wiring and thermostats to be installed in accordance with the applicable code requirements.
- d. All electrical controls, valves, wiring and thermostats to be installed in accordance with the applicable code requirements.

**LEGEND:**

Type A	1/2" Schedule 40 black steel, "tee" or "elbow" fittings
Type B	1/2" Schedule 40 black steel, "tee" or "elbow" fittings
Type C	1/2" Schedule 40 black steel, "tee" or "elbow" fittings

**NOTES:**

1. All piping shall be installed in accordance with the applicable code requirements.
2. All piping shall be installed in accordance with the applicable code requirements.
3. All piping shall be installed in accordance with the applicable code requirements.
4. All piping shall be installed in accordance with the applicable code requirements.
5. All piping shall be installed in accordance with the applicable code requirements.
6. All piping shall be installed in accordance with the applicable code requirements.
7. All piping shall be installed in accordance with the applicable code requirements.
8. All piping shall be installed in accordance with the applicable code requirements.
9. All piping shall be installed in accordance with the applicable code requirements.
10. All piping shall be installed in accordance with the applicable code requirements.

FOR AGENCY OF TRANSPORTATION

STATE OF VERMONT  
DEPARTMENT OF STATE BUILDINGS  
AGENCY OF ADMINISTRATION  
MONTPELIER, VERMONT

**HEATING/ELECTRICAL PLANS AND NOTES**

ADDITION TO HIGHWAY DISTRICT NO. 5 HEADQUARTERS

COLCHESTER

DATE	SCALE	REVISIONS	DWG. NO.
27 MAY 1987	AS NOTED		ME-1
DRAWN BY: T. McCLELLAN	APPROVED BY: T. McCLELLAN		2 OF 3

VERMONT