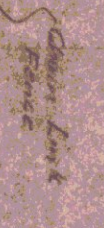
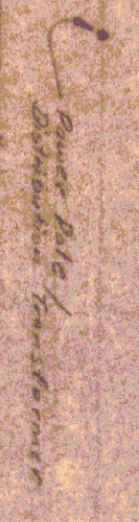
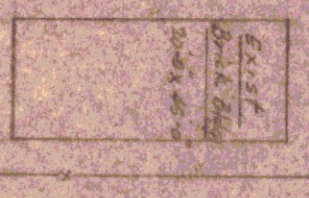
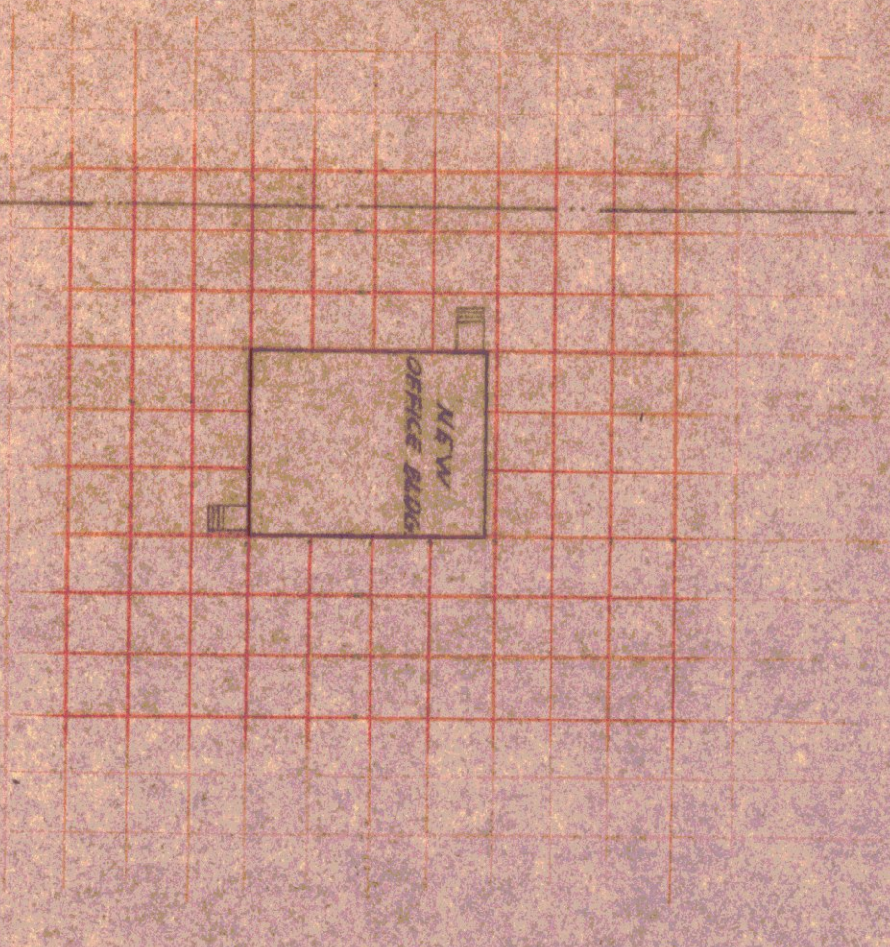
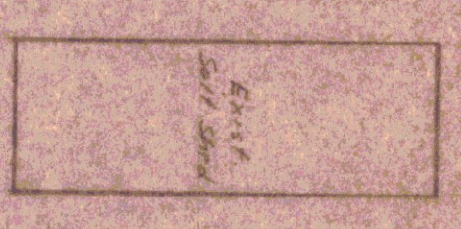
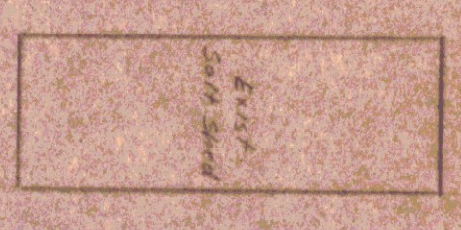
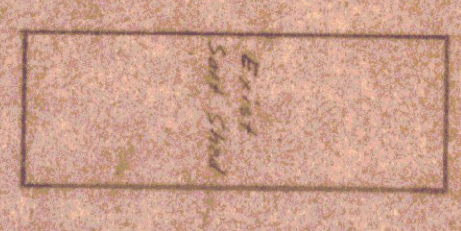
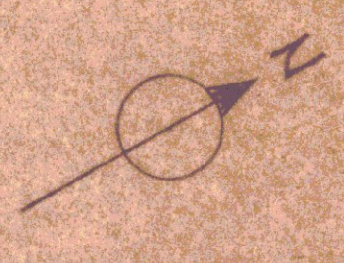


8



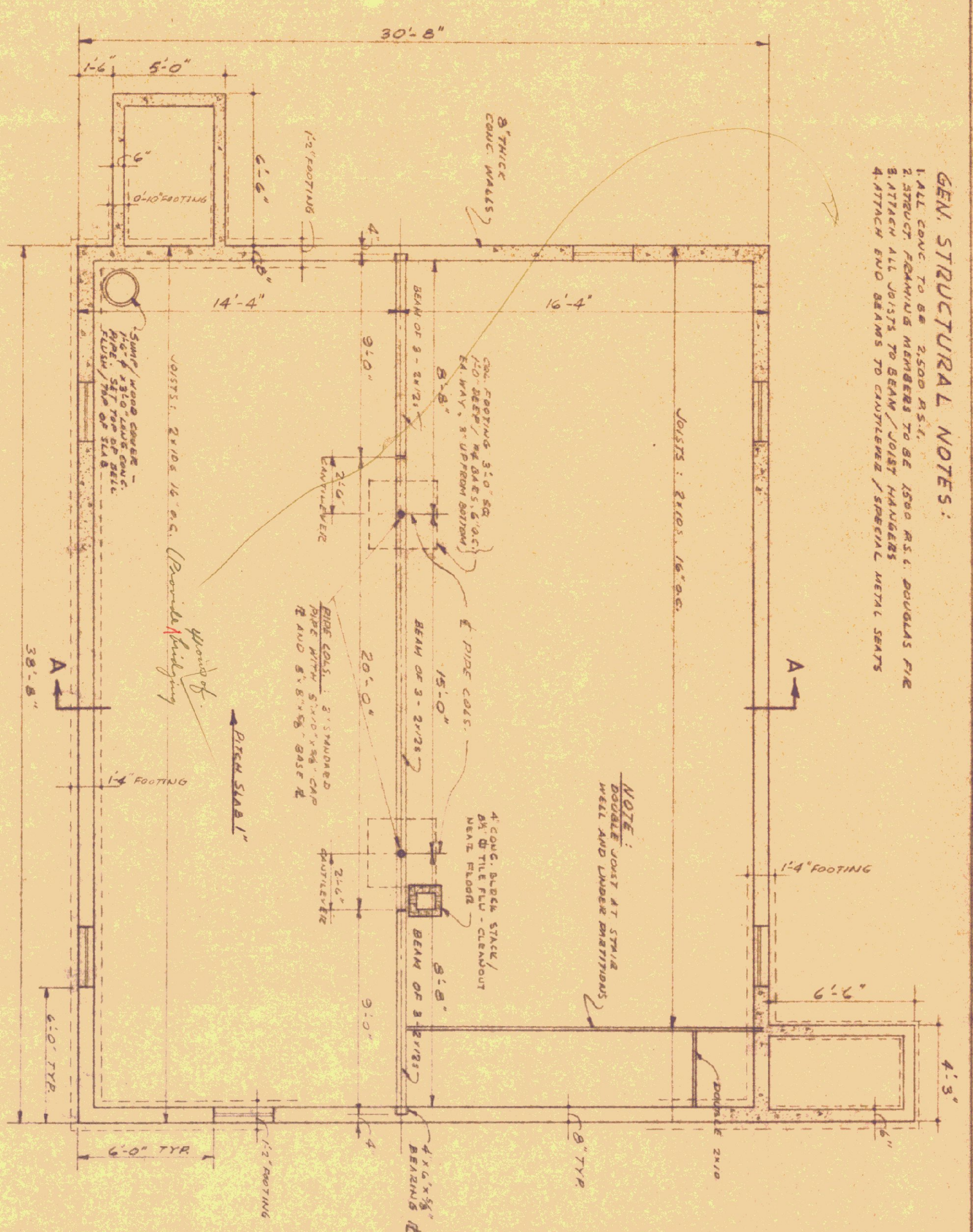
SITE PLAN
FOR
HIGHWAY DISTRICT #5 OFFICE BLDG.
STATE BUILDINGS DIVISION
MONTPELIER, VERMONT
OCT 2, 1964
U.S.T.

SCALE: 1" = 30'-0"



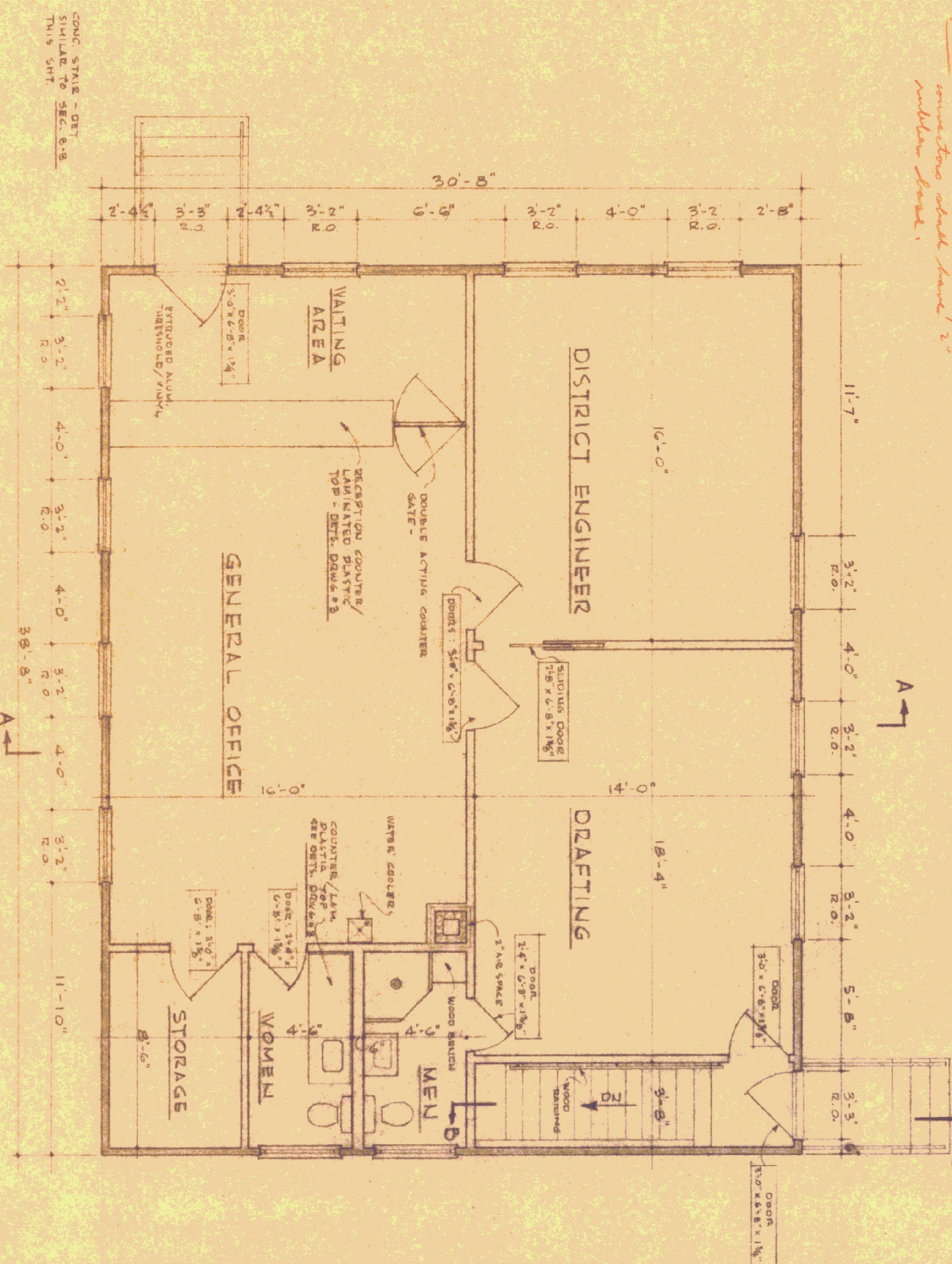
M

GEN. STRUCTURAL NOTES:
 1. ALL CONC. TO BE 2500 P.S.I.
 2. STRUCT. FORMWORK NUMBERS TO BE 1500 P.S.I. DOUGLAS FIR
 3. ATTACH ALL JOISTS TO BEAM / JOIST HANGERS
 4. ATTACH END BEAMS TO CHUTES / SPECIAL METAL SHOTS

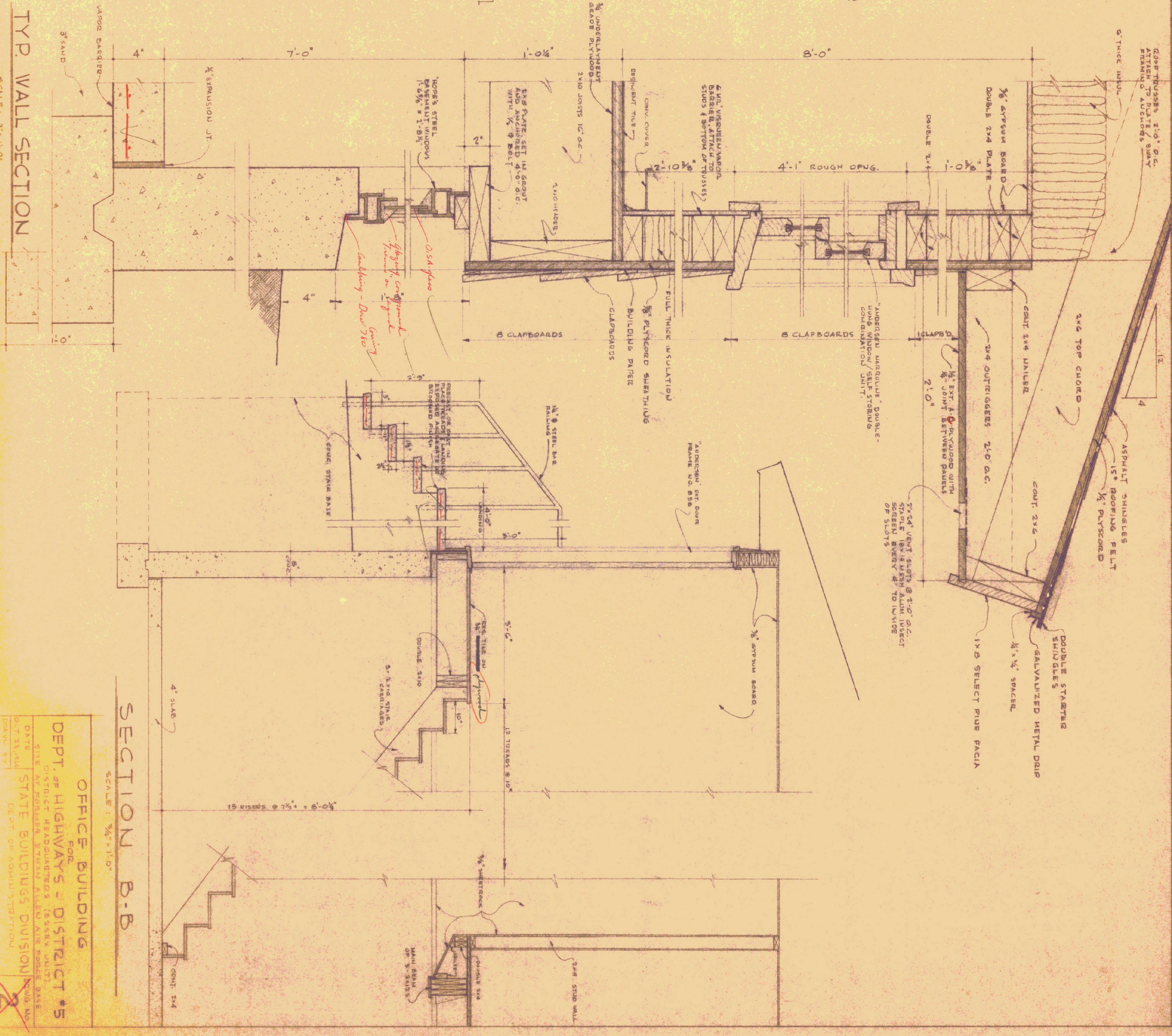


NOTE: All walls and beams to be constructed above level 2'

FOUNDATION PLAN SCALE: 1/4" = 1'-0"



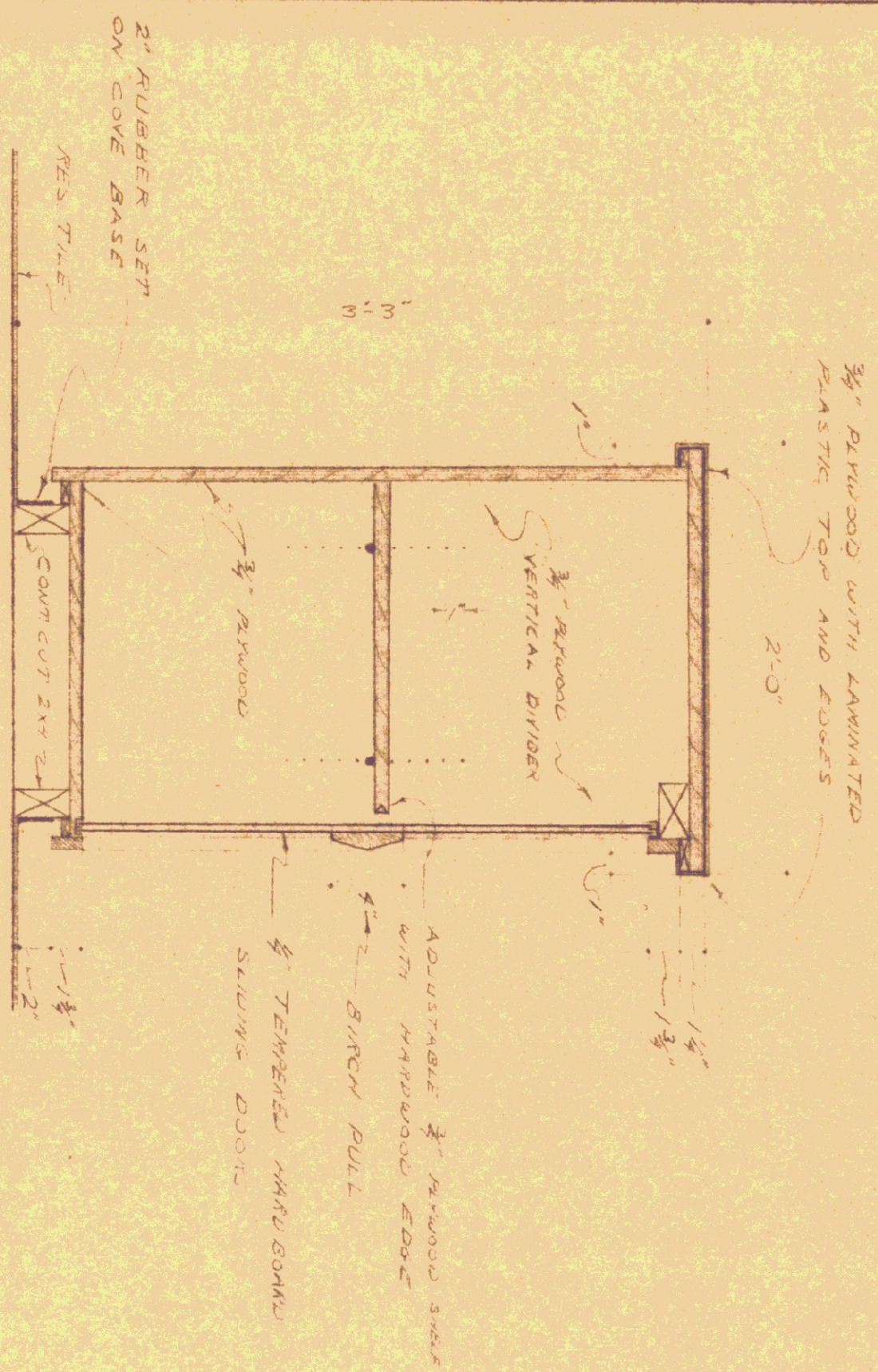
FLOOR PLAN SCALE: 1/4" = 1'-0"



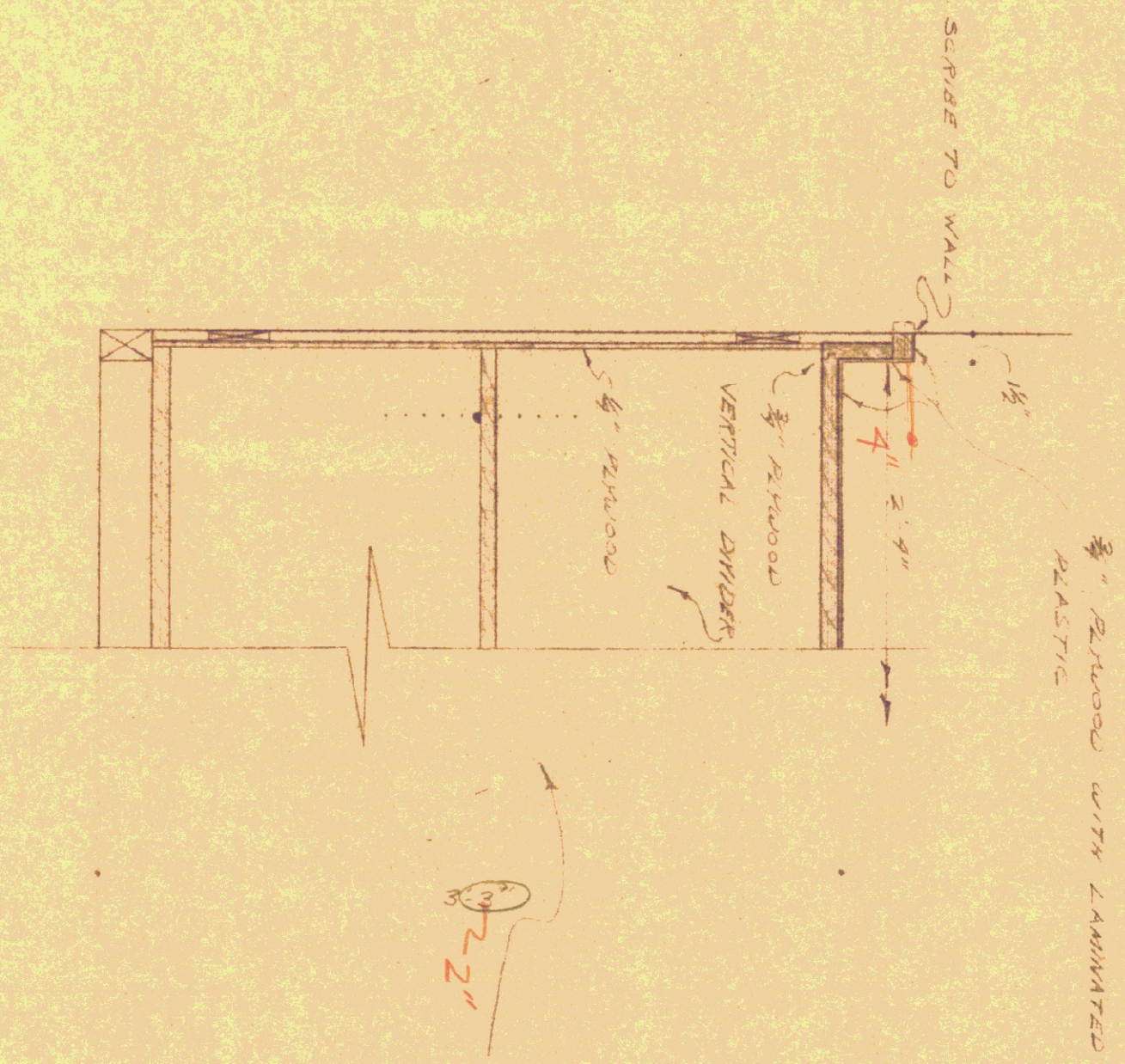
TYP. WALL SECTION SCALE: 3/4" = 1'-0"

SECTION B.B. SCALE: 1/4" = 1'-0"

OFFICE BUILDING
 DEPT. OF HIGHWAYS - DISTRICT #5
 DISTRICT HEADQUARTERS (6548X UNIT)
 STATE BUILDINGS DIVISION
 DATE: OCT 23 1944
 DRAWN BY: [Signature]
 CHECKED BY: [Signature]
 APPROVED BY: [Signature]

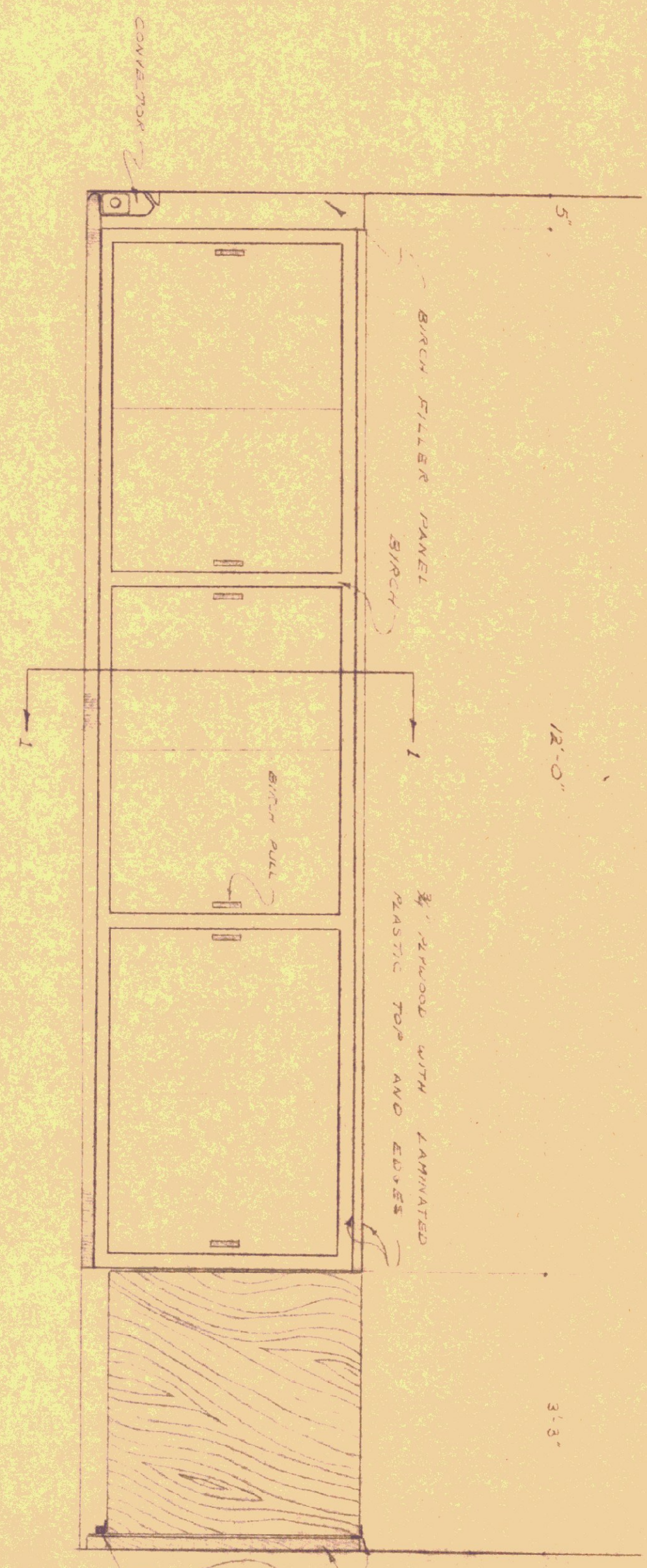


SECTION 1-1
SCALE: 1/8" = 1'-0"

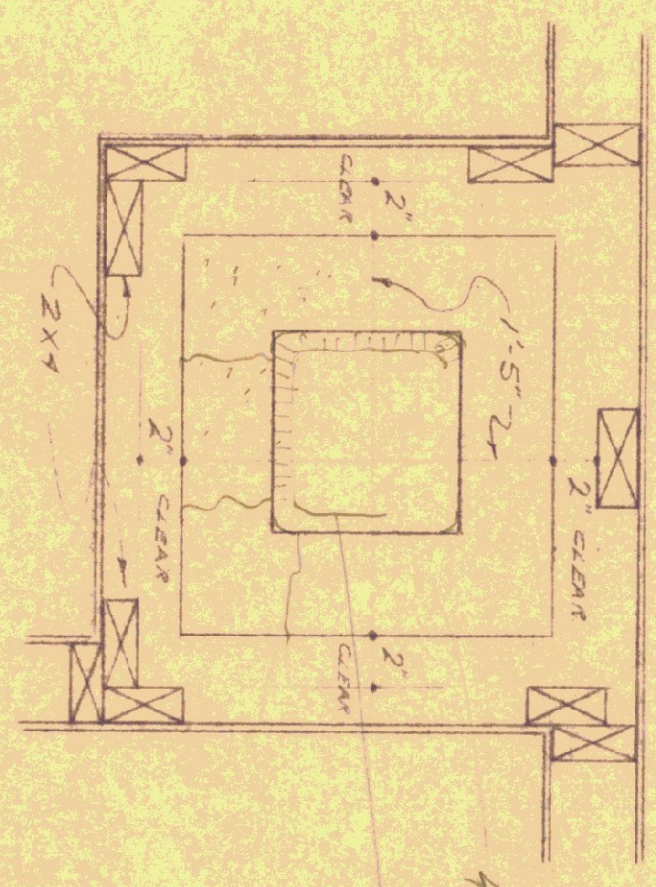


SECTION @ LAV COUNTER
SCALE: 1/8" = 1'-0"

REMAINING COUNTER SAME AS RECEPTION COUNTER

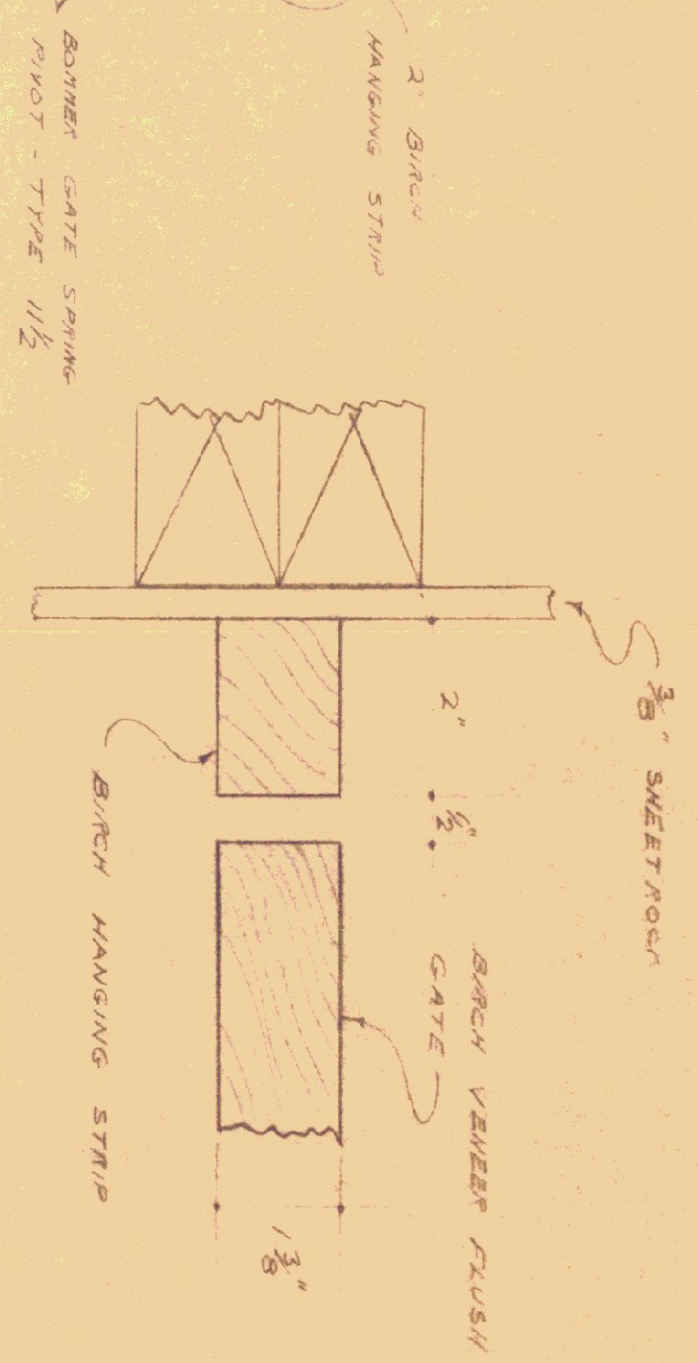


ELEV. RECEPTION COUNTER
SCALE: 3/8" = 1'-0"



PLAN SECTION @ CHIMNEY
SCALE: 1/8" = 1'-0"

Place Block
6" x 8" x 16" O.D.
1/16" INCH



DETAIL @ GATE
HALF SCALE

OFFICE BUILDING
DEPT. of HIGHWAYS - DISTRICT #5
(SITE @ FORMER STAN ALLEN BASE)
DATE: OCT 28 64
DRAWN BY: C. J. H.
CHECKED BY: MONTGOMERY
STATE BULL. DIVISION
DEPT. OF ADMINISTRATION
UNIFORM