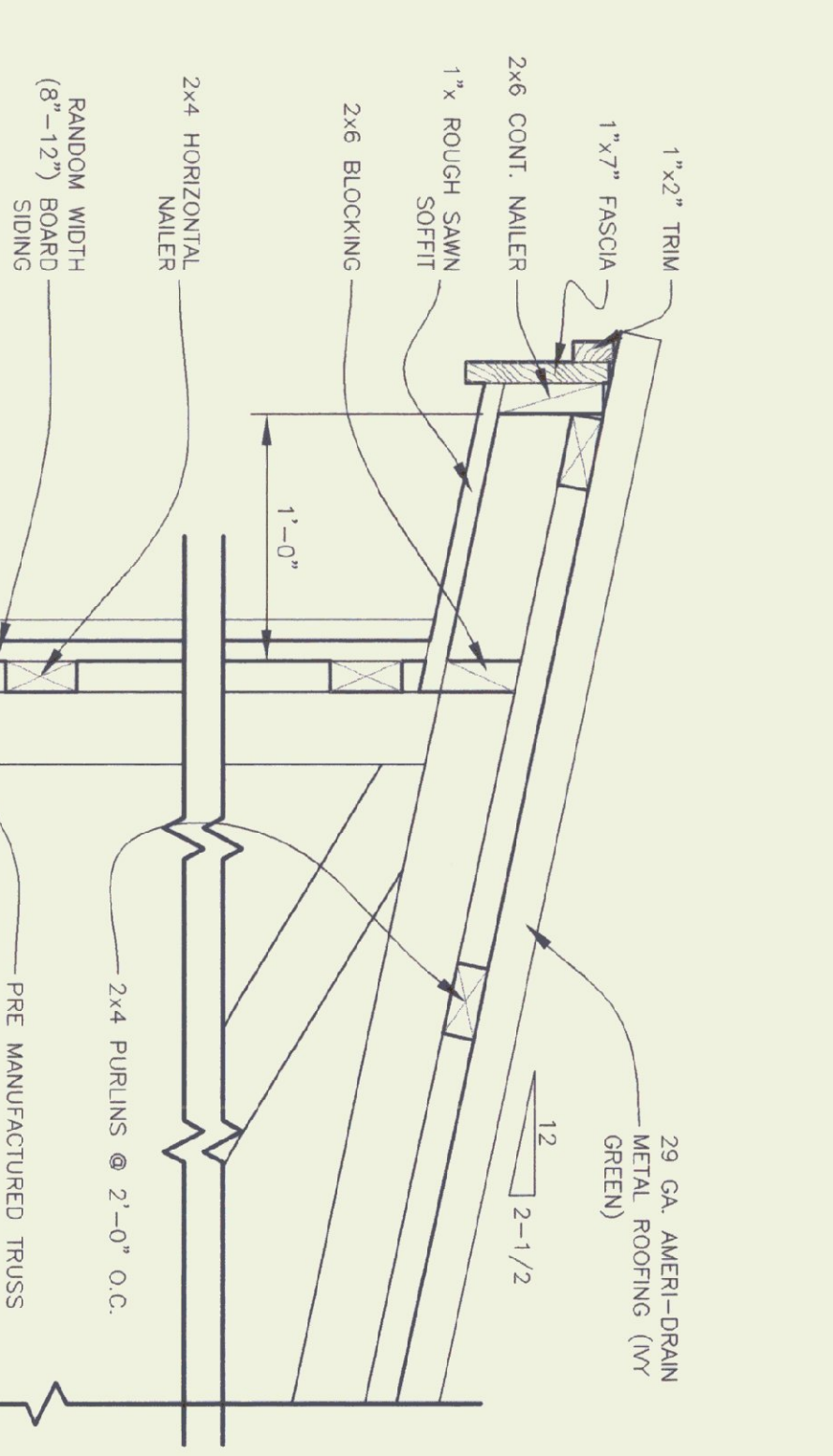
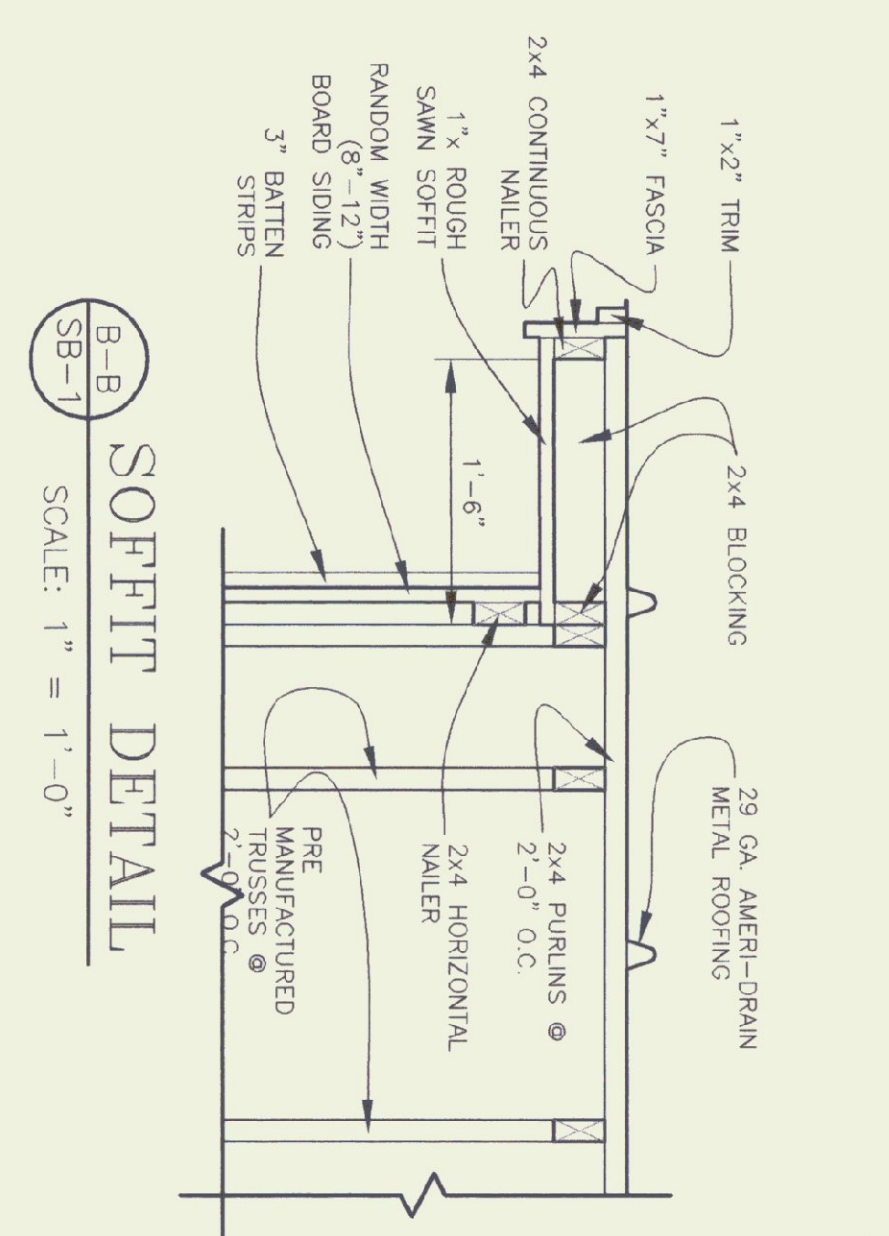
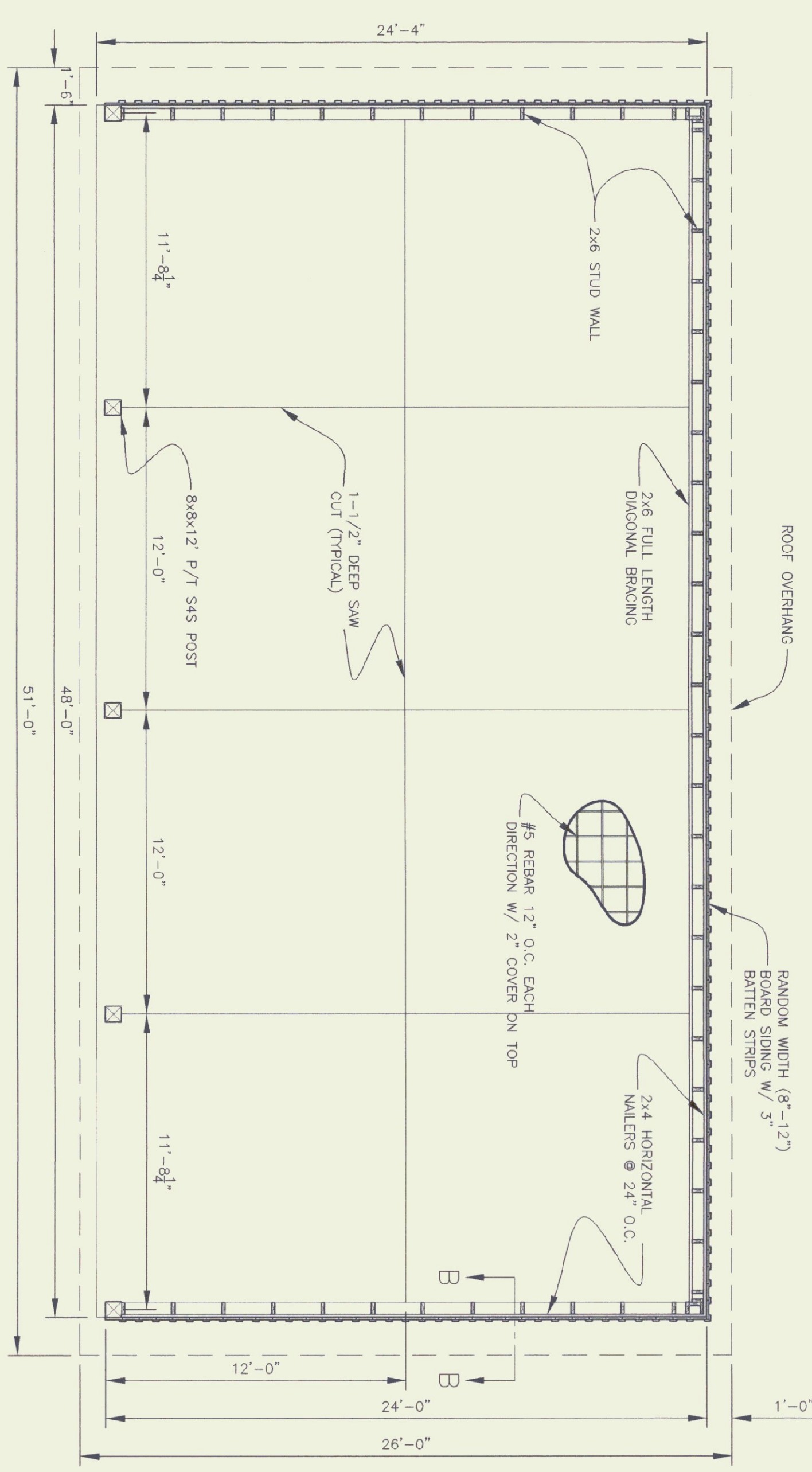


NOTES:
POST BASE TO BE
FABRICATED FROM
1 PLY FRAMED & PAINTED
BLACK BEFORE
INSTALLATION.



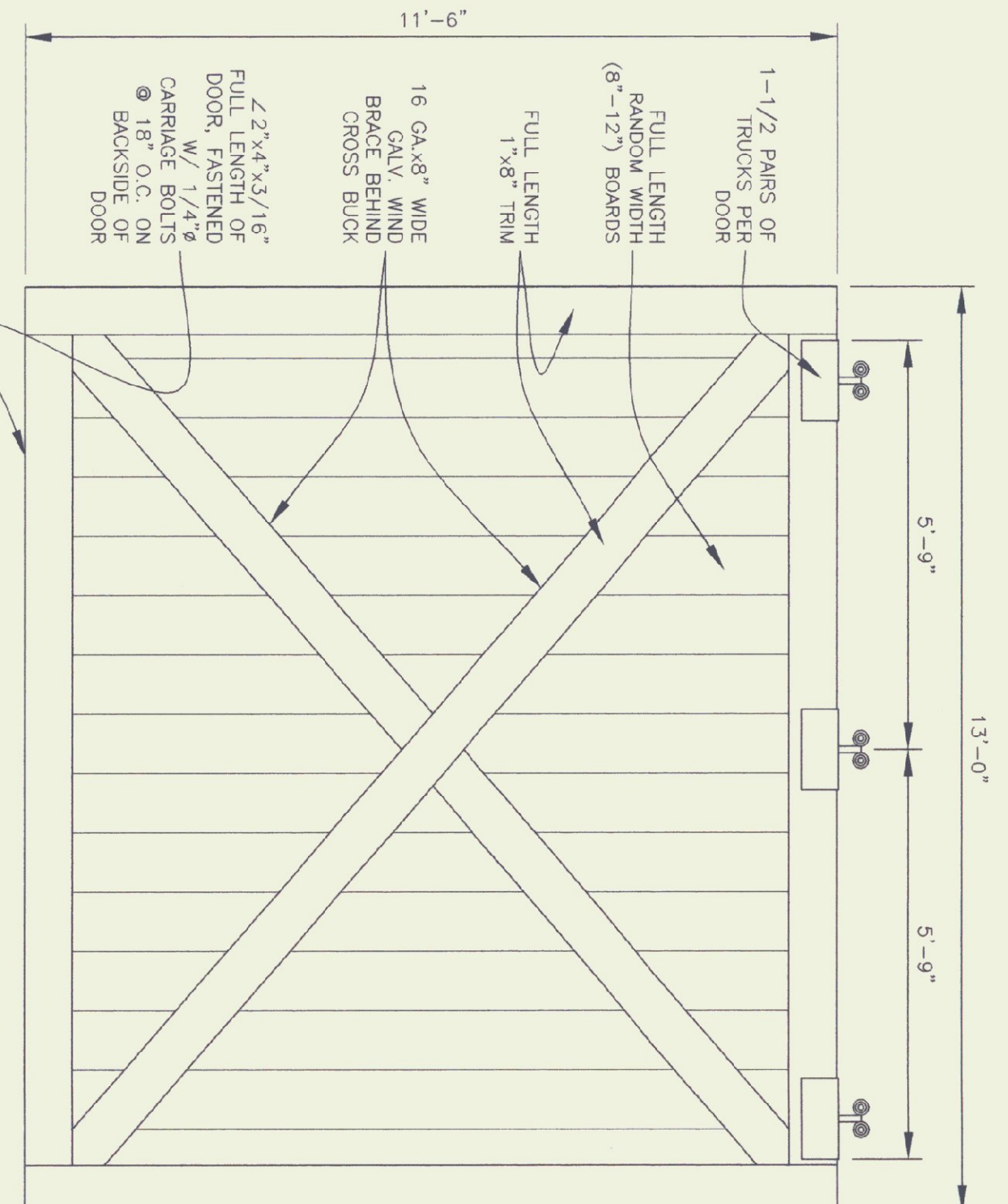
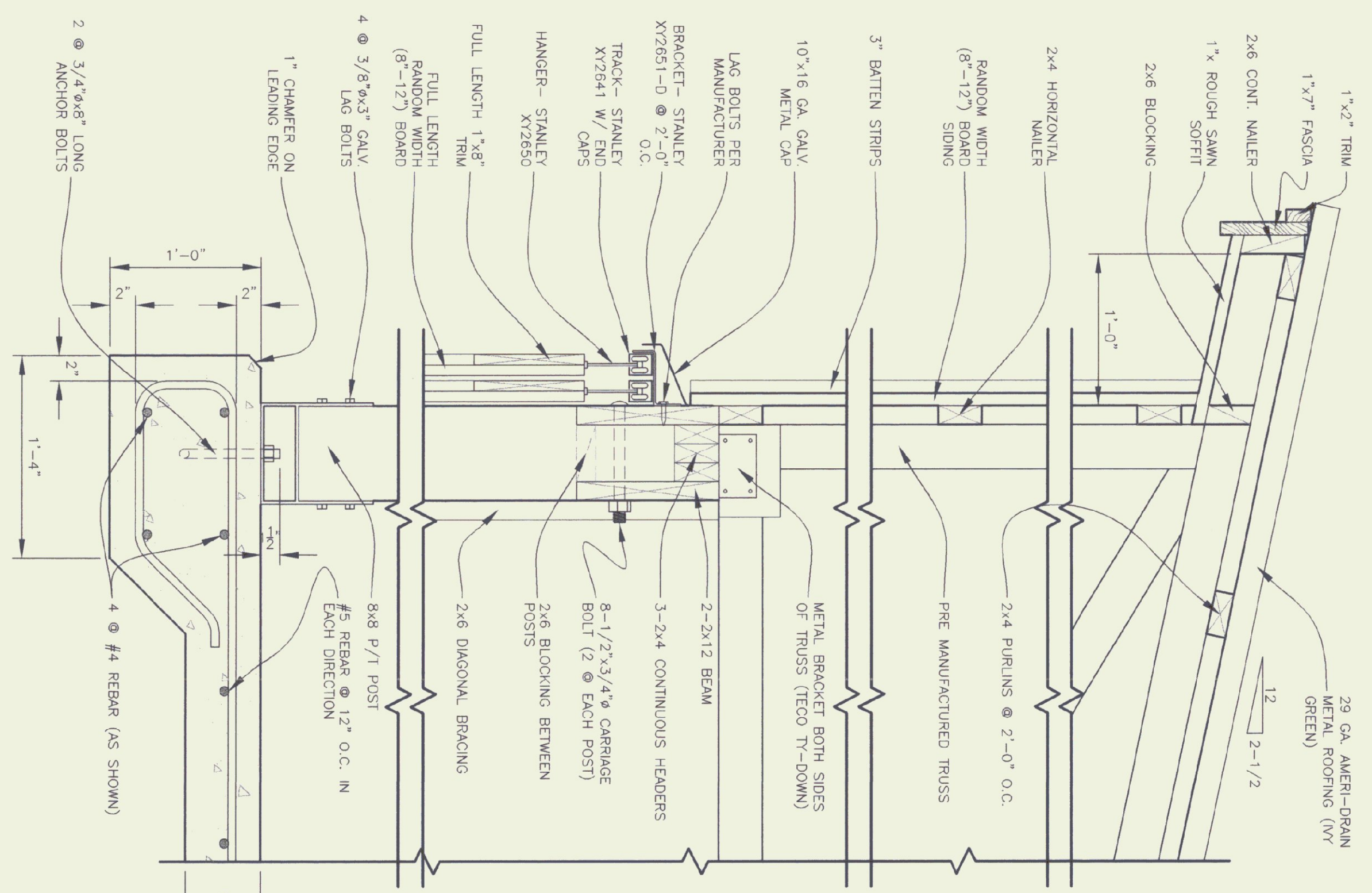
POST BASE DETAIL
SCALE: 3" = 1'-0"

SOFFIT DETAIL
SCALE: 1" = 1'-0"



SHED PLAN
SCALE: 1/4" = 1'-0"

SECTION A-A
SCALE: 1-1/2" = 1'-0"



DOOR DETAIL
SCALE: 1/2" = 1'-0"

GENERAL NOTES

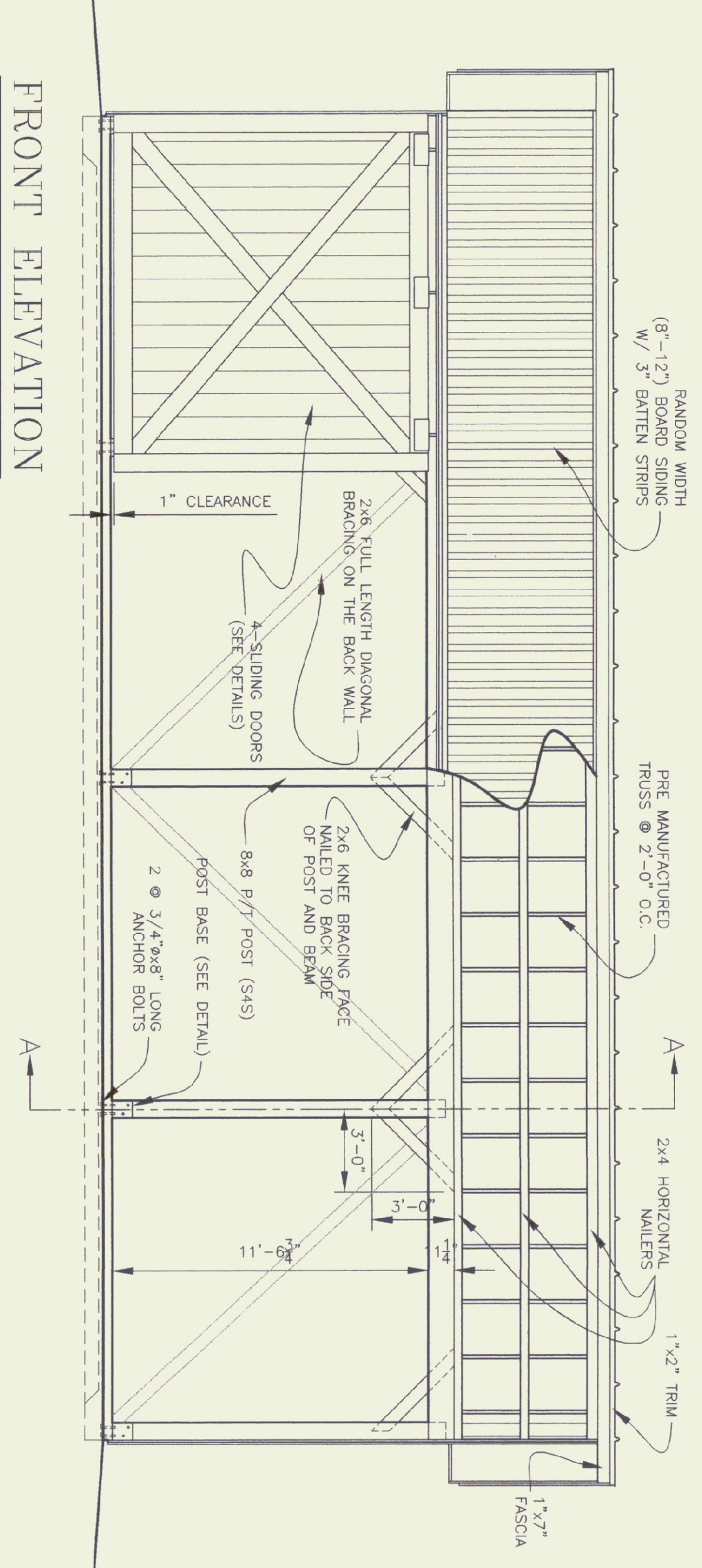
TRUSS NOTES
TRUSS MANUFACTURER TO PROVIDE DEPT. OF STATE BUILDINGS ENGINEER A SET OF ENGINEERED & STAMPED DRAWINGS FOR APPROVAL PRIOR TO TRUSS MANUFACTURE.
TRUSS MANUFACTURER TO PROVIDE THE CONTRACTOR WITH ALL NECESSARY INSTRUCTIONS FOR PROPER TRUSS INSTALLATION, ANCHORAGE, BRACING, LIFTING, ETC.
TRUSS DESIGN LOADS IN ACCORDANCE WITH THE 1987 B.O.C.A. FOR VERMONT.

MINIMUM LOADS:
LIVE - PER 1987 B.O.C.A. FOR VERMONT (40 PSF MIN.)
DEAD - AS CALCULATED FROM TRUSS & ROOF MATERIAL
WIND - 25 PSF
DIAGONAL WIND BRACING PER TRUSS MANUFACTURE.

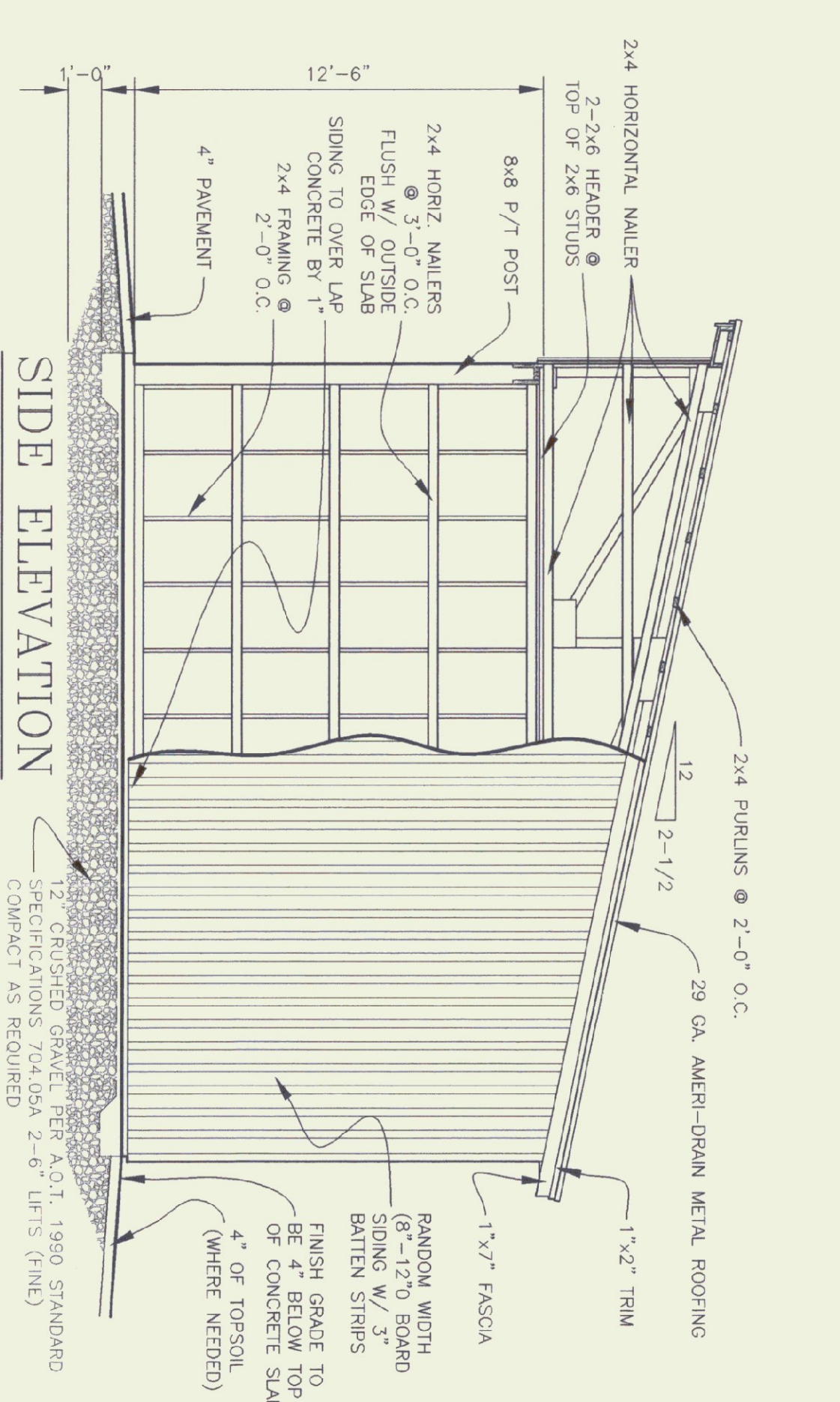
LUMBER NOTES:
FRAMING MEMBERS TO BE KILN DRIED CONSTRUCTION GRADE SPRUCE S4S 19% MOISTURE CONTENT.
PLATES & NAILERS IN CONTACT WITH CONCRETE TO BE CCA 0.40 TREATED BOARD & BATTEN SIDING, TRIM, AND SOFFIT MATERIAL TO BE NATIVE ROUGH SKIN WHITE PINE, SPRUCE, EASTERN FIR OR RED PINE. BOARDS TO BE RANDOM WIDTH 8'-12" - BATTEN 3".
BOARD SIDING & BATTEN STRIPS TO BE FULL LENGTH (NO HORIZONTAL JOINTS).

FINISH NOTES:
ALL FASTENERS TO BE GALVANIZED AND SHALL BE APPROPRIATELY SIZED.

CONCRETE NOTES: PER A.O.T. STANDARD
STRENGTH: 3500 PSI
FINISH: FLOATED
CURING METHOD: PER TABLE 501.17A



FRONT ELEVATION
SCALE: 1/4" = 1'-0"



SIDE ELEVATION
SCALE: 1/4" = 1'-0"

TYPICAL OF 3