

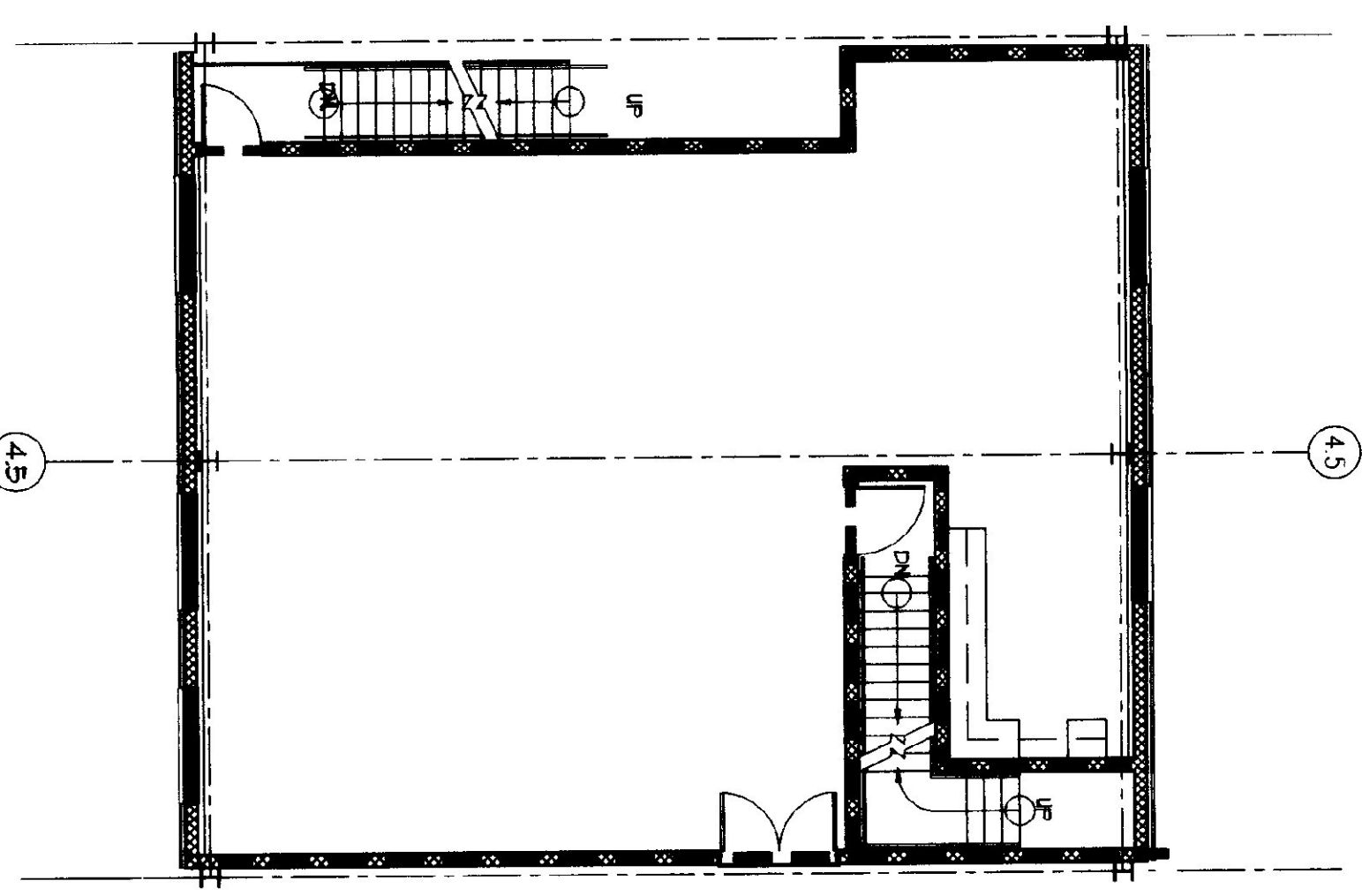
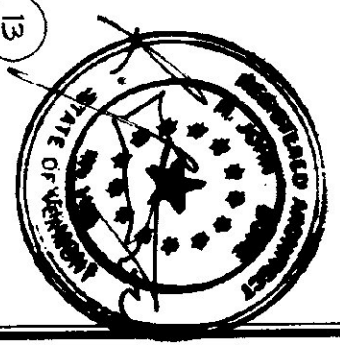
MAIN LEVEL PLAN

1/8" = 1'-0"



REF. NORTH SCALE: 1/8" = 1'-0"

MATCH LINE - FOR CONTINUATION
SEE PLAN BELOW



MEZZANINE PLAN

1/8" = 1'-0"

BOCA BUILDING REQUIREMENTS - 1987 EDITION

OCCUPANCY TYPE 9 - STORAGE ORDINARY HAZARD
CONSTRUCTION TYPE 2C UNPROTECTED
HEIGHT AND AREA LIMITATIONS
2 STORIES AT 30'
8400 SF

ALLOWED AREA INCREASE

DEVELOPED AREA
12000 SF
AUTOMATIC FIRE SUPPRESSION MODIFICATION
8400 SF X 1.5 = 12600 SF
TOTAL ALLOWED AREA
8400 SF + 12600 SF = 21000 SF

CONSTRUCTION REQUIREMENTS FOR TYPE 2C SPRINKLERED
FIRE SEPARATION WALLS 1 HOUR
FIRE ENCLOSED EXITS AND STAIRWAYS 1 HOUR
EXIT ACCESS CORRIDORS 0 HOURS
INTERIOR BEARING WALLS, COLUMNS, FLOOR TRUSSES 0 HOURS
STRUCTURAL MEMBERS SUPPORTING WALL 0 HOURS
FLOOR CONSTRUCTION 0 HOURS
ROOF CONSTRUCTION INCLUDING BEAMS, TRUSSES, ROOF DECKS 0 HOURS
INTERIOR DOORS TO BE 1/2 HOUR FIRE RATING

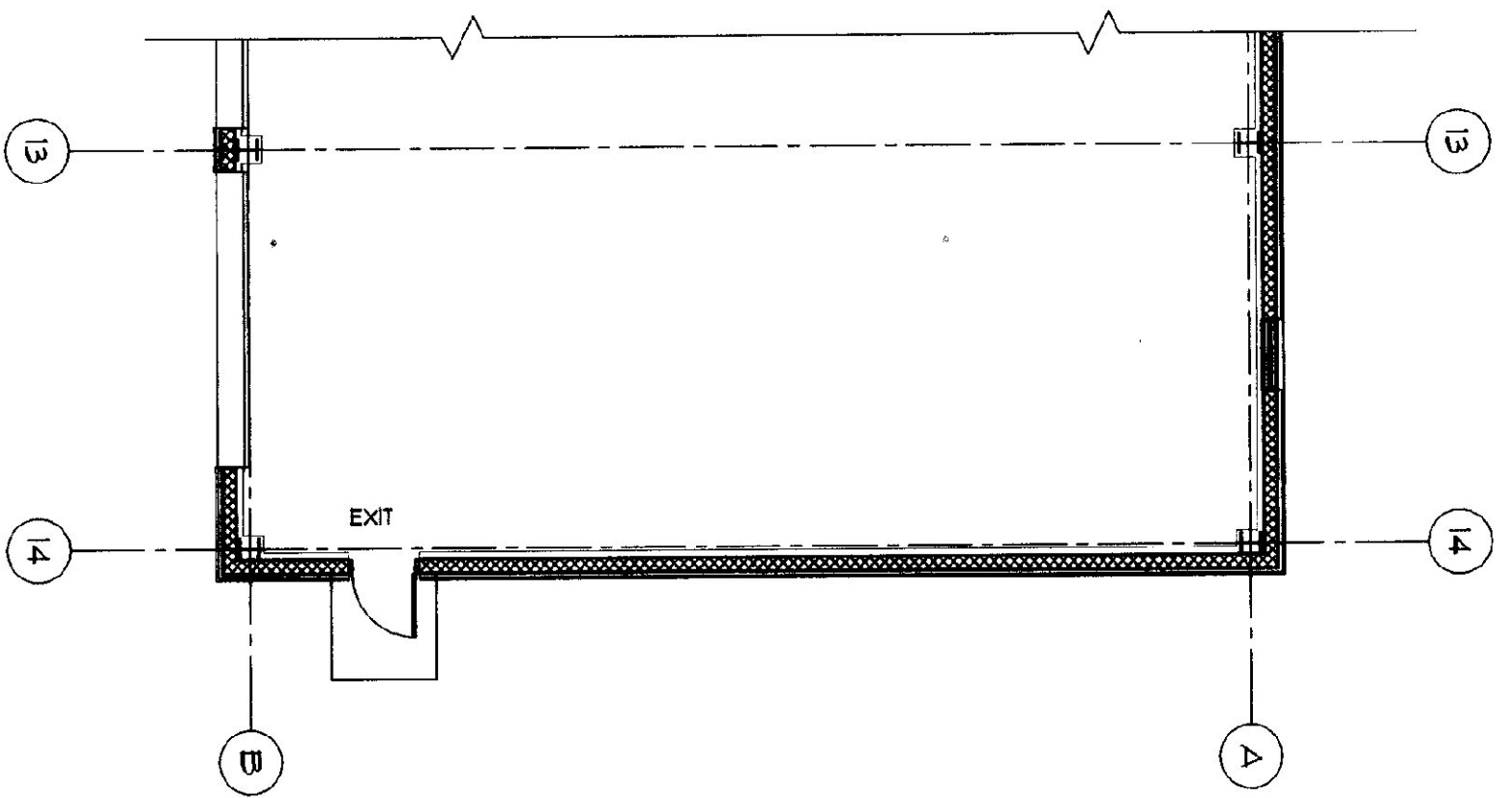
NFPA 101 BUILDING REQUIREMENTS - 1994 EDITION

CLASSIFICATION - STORAGE ORDINARY HAZARD
EXITS REQUIRED - MIN. 3 REQUIRED
MAX. TRAVEL DISTANCE TO EXITS 400 FEET
DEAD END CORRIDORS NOT EXCEED 80 FEET
CUTION PATH FOR ORDINARY HAZARD 80 FEET
CLASS 1 - FINISH REQUIRED

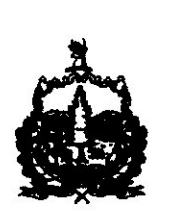
DESIGN FLOOR LOAD OF MEZZANINE - 125 PSF

LEGEND

--- ONE HOUR FIRE SEPARATION WALL



AGENCY OF TRANSPORTATION
COLCHESTER MAINTENANCE FACILITY
CHIMNEY CORNERS
COLCHESTER, VERMONT



STATE OF VERMONT
DEPARTMENT OF BUILDINGS
AND GENERAL SERVICES
AGENCY OF ADMINISTRATION
MONTPELIER, VERMONT



DORE AND WHITTIER INC.
ARCHITECTS • PROJECT MANAGERS
706 WELLSFORD ROAD, SOUTH BURLINGTON, VERMONT

CODE PLANS MAINTENANCE GARAGE COLCHESTER	SCALE: 1/8" = 1'-0"	REVISIONS 1/10/2000
	DATE: 15 OCT. 1999	DRAWN BY: NTD
	APPR. BY: NTD	A-0.1
	17 OF 36	17 OF 36