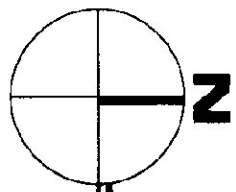


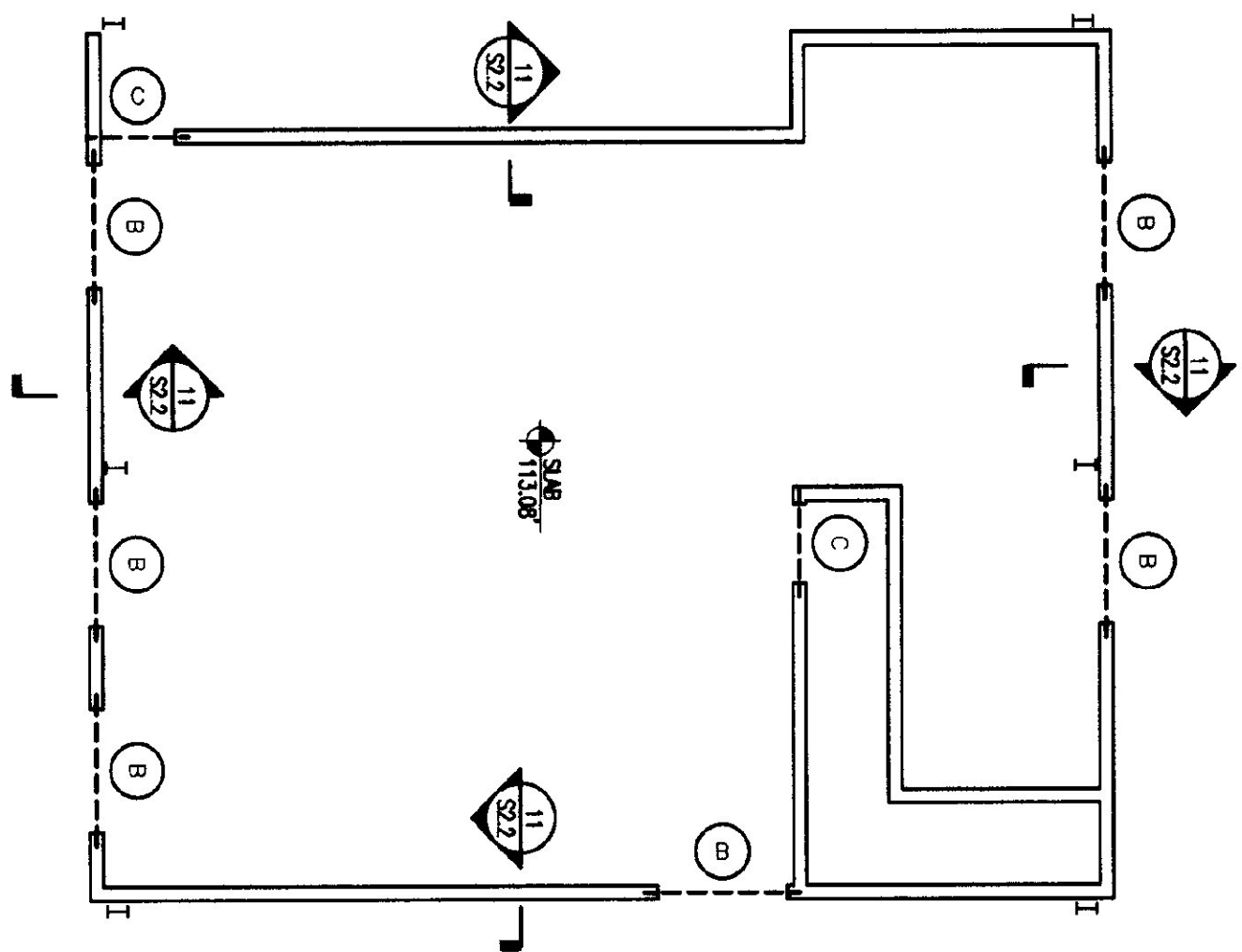
MAIN LEVEL WALL PLAN

1/8" = 1'-0"



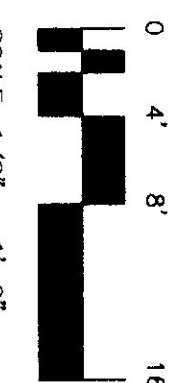
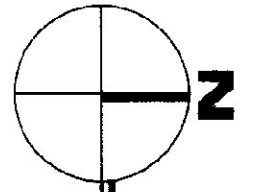
NOTES:

- 1) CMU WALLS:
 EXTERIOR WALLS: 8" CMU WITH #4'S AT 24" O.C.
 INTERIOR WALLS: 8" CMU WITH #4'S AT 24" O.C.
 NOTE: CMU WALL SECTIONS BETWEEN GARAGE DOORS TO HAVE #4'S IN EACH CORNER FULLY GROUTED.
 (SEE ARCHITECTURAL DRAWINGS FOR LOCATION WALL TYPES)
- 2) METAL CONTINUOUS BOND BEAM AT JUNCTION OF WALL HEIGHT AND TOP OF ALL WALLS WITH (2) #4'S CONTINUOUS, AND STIRRUPS IN 8" DIA. 0-9" WALL THICKNESS REINFORCEMENT EVERY OTHER COURSE (EVERY 16"). INSTALL AND STIRRE PER MANUFACTURER'S DIRECTIONS. ABOUT FILL ALL CORNER JOINTS TO OPENINGS.
- 3) CMU WALL CONTROL JOINTS TO BE LOCATED AT 25'-0" o.c. OR 3 TIMES THE WALL HEIGHT, WHICHEVER IS LESS.
- 4) LIMITS IN MASONRY WALL OPENINGS:
 A) LIMIT 1/4" - SEE DETAIL 6/S2.2
 B) LIMIT 3/8" - SEE DETAIL 6/S2.2
 C) LIMIT 1/2" - SEE DETAIL 6/S2.2
 D) LIMIT 3/4" - SEE DETAIL 6/S2.2
- 5) MEZZANINE SLAB: 8" PRE-CAST HOLLOW CORE SLAB WITH 2" CONCRETE TOPPING.
 TOPPING TO HAVE TENSILE CONCRETE REINFORCEMENT AS MANUFACTURED BY TENSAR COMPANY. REINFORCEMENT TO BE INSTALLED AT 18" O.C. WITH 1/2" DIA. BARS PER MANUFACTURER'S INSTRUCTIONS. TOP OF TOPPING ELEVATION TO BE 113.00'. HOLLOW CORE SLAB TO BE DESIGNED FOR A LIVE LOAD CAPACITY OF 125 psf.
- 6) TOP OF EXTERIOR CMU WALLS AND INTERIOR CMU WALL ALONG "T" LINE TO HAVE GRADE BED WITH UNDERLIE OF ROOF DECK (NOTE: TOP OF WALLS ON LINES "1", "3" AND "4" ARE SLIGHTLY).

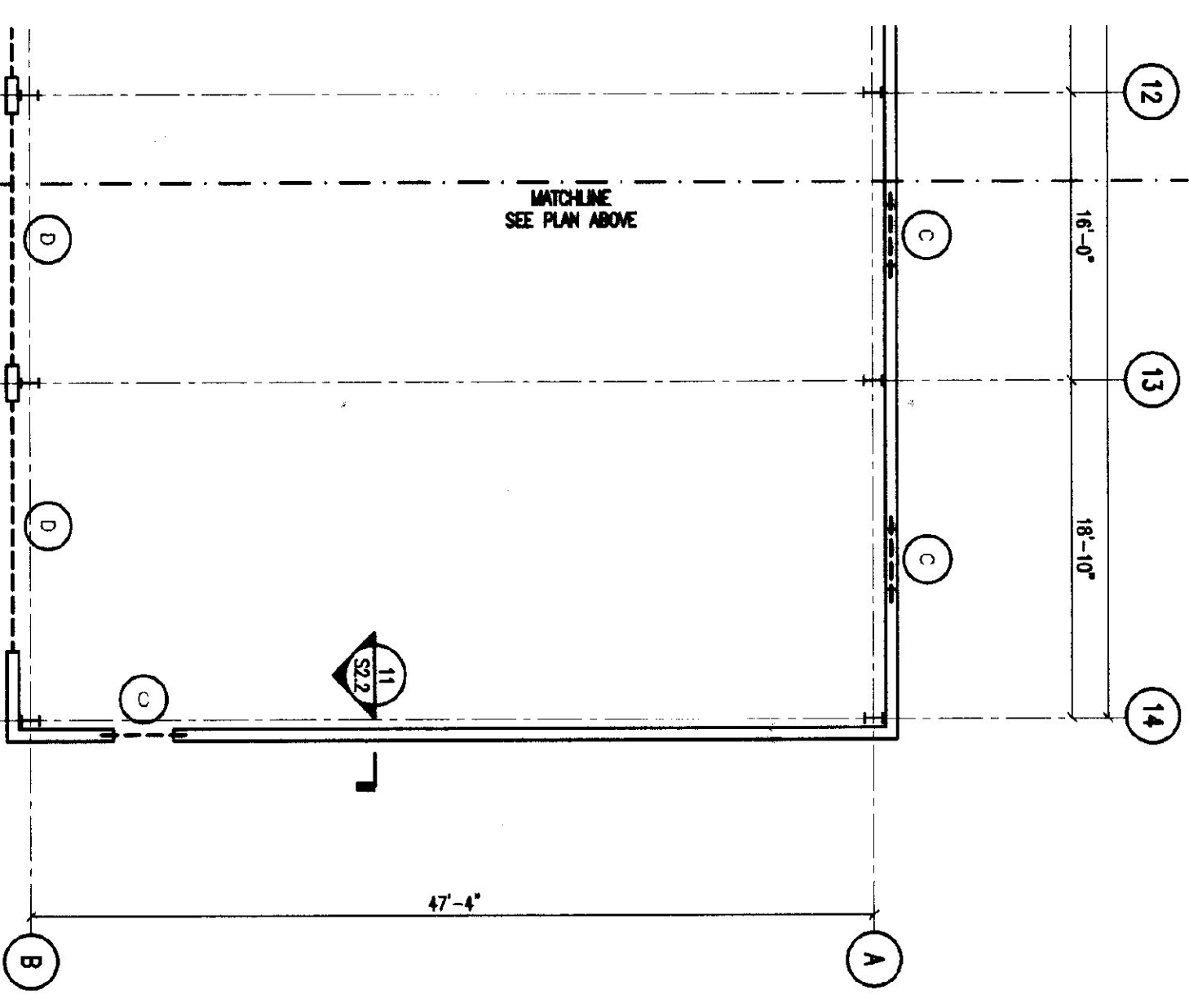


MEZZANINE WALL PLAN

1/8" = 1'-0"

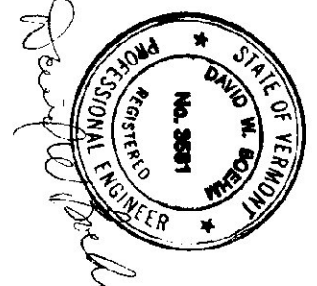


SCALE: 1/8" = 1'-0"



MATCHLINE
SEE PLAN ABOVE

MATCHLINE
SEE PLAN BELOW



| | |
|--------------------|-----------------|
| SCALE: AS NOTED | REVISIONS |
| DATE: OCT 15, 1999 | 1-00 Final Rev. |
| DRAWN BY: KW/JMM | |
| APPR. BY: DWB | |

AGENCY OF TRANSPORTATION
 COLCHESTER MAINTENANCE FACILITY
 CHIMNEY CORNERS
 COLCHESTER, VERMONT

STATE OF VERMONT
 DEPARTMENT OF BUILDINGS
 AND GENERAL SERVICES
 AGENCY OF ADMINISTRATION
 MONTPELIER, VERMONT

DORE AND WHITTIER INC.
 ARCHITECTS • PROJECT MANAGERS
 0765 WILKINSON ROAD • SOUTH BURLINGTON • VERMONT

7 Kilburn Street
 Burlington, VT 05402
 Tel: 802.268.8888
 Fax: 802.268.8800
 EngineeringVentures.com