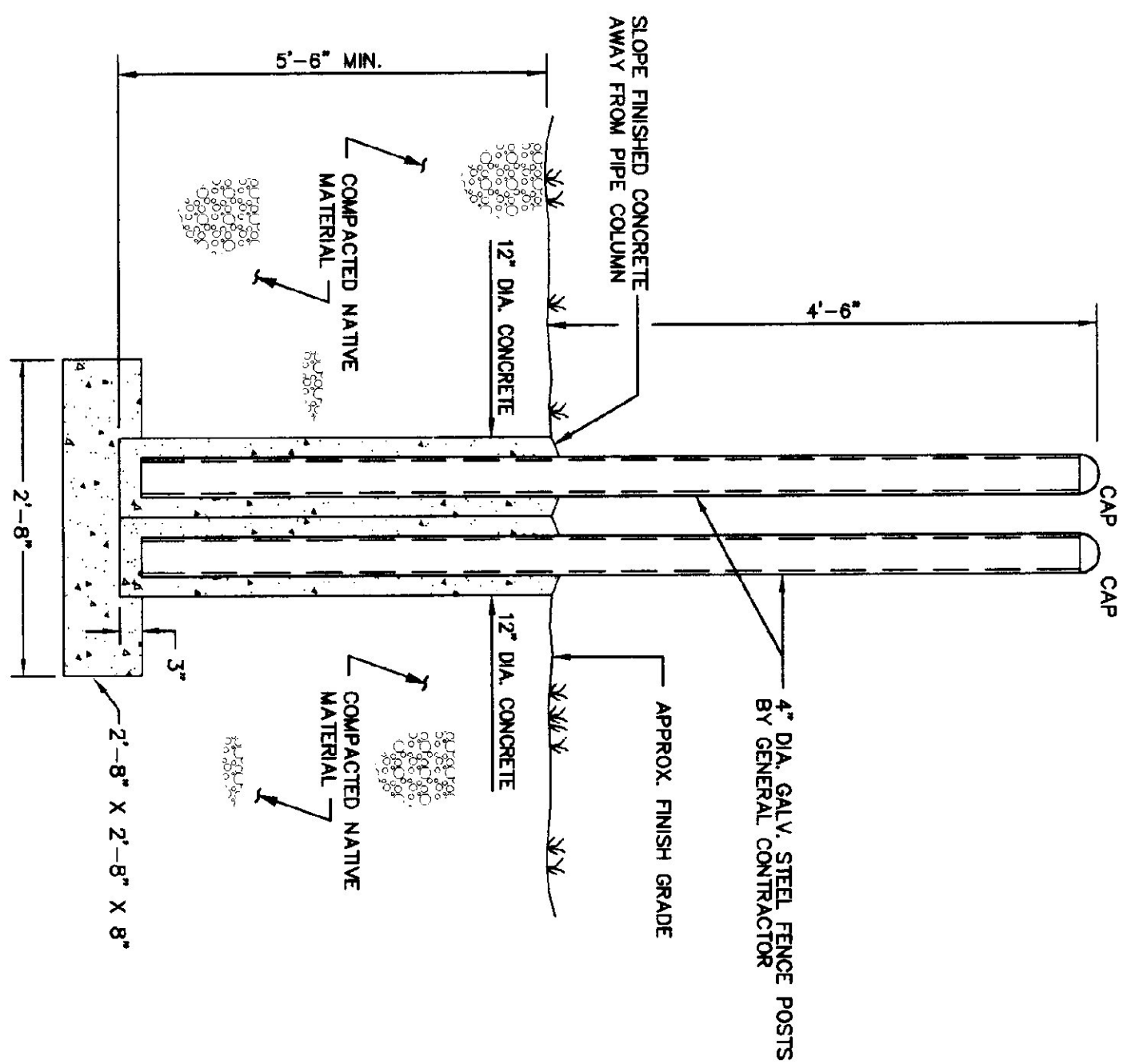
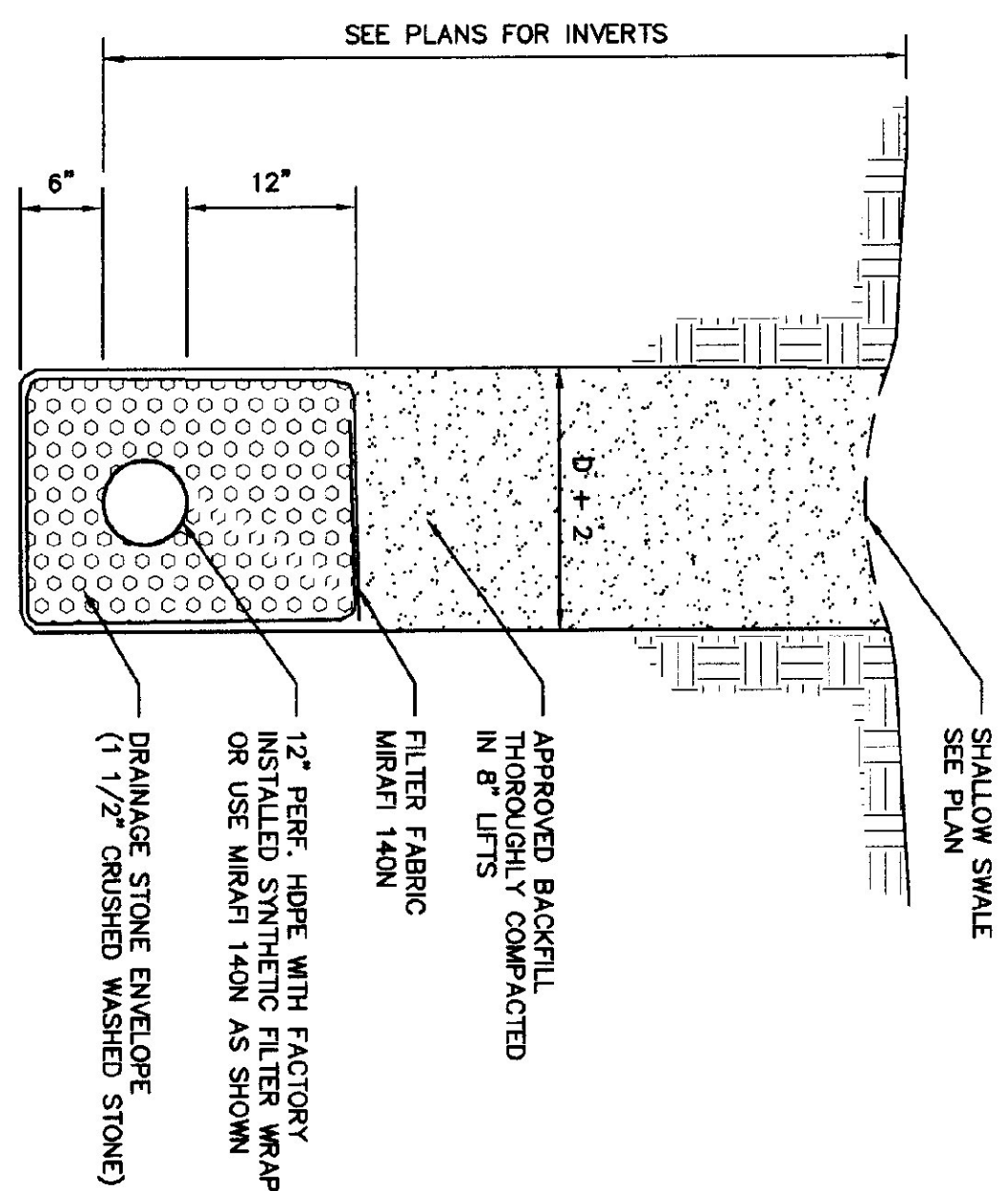


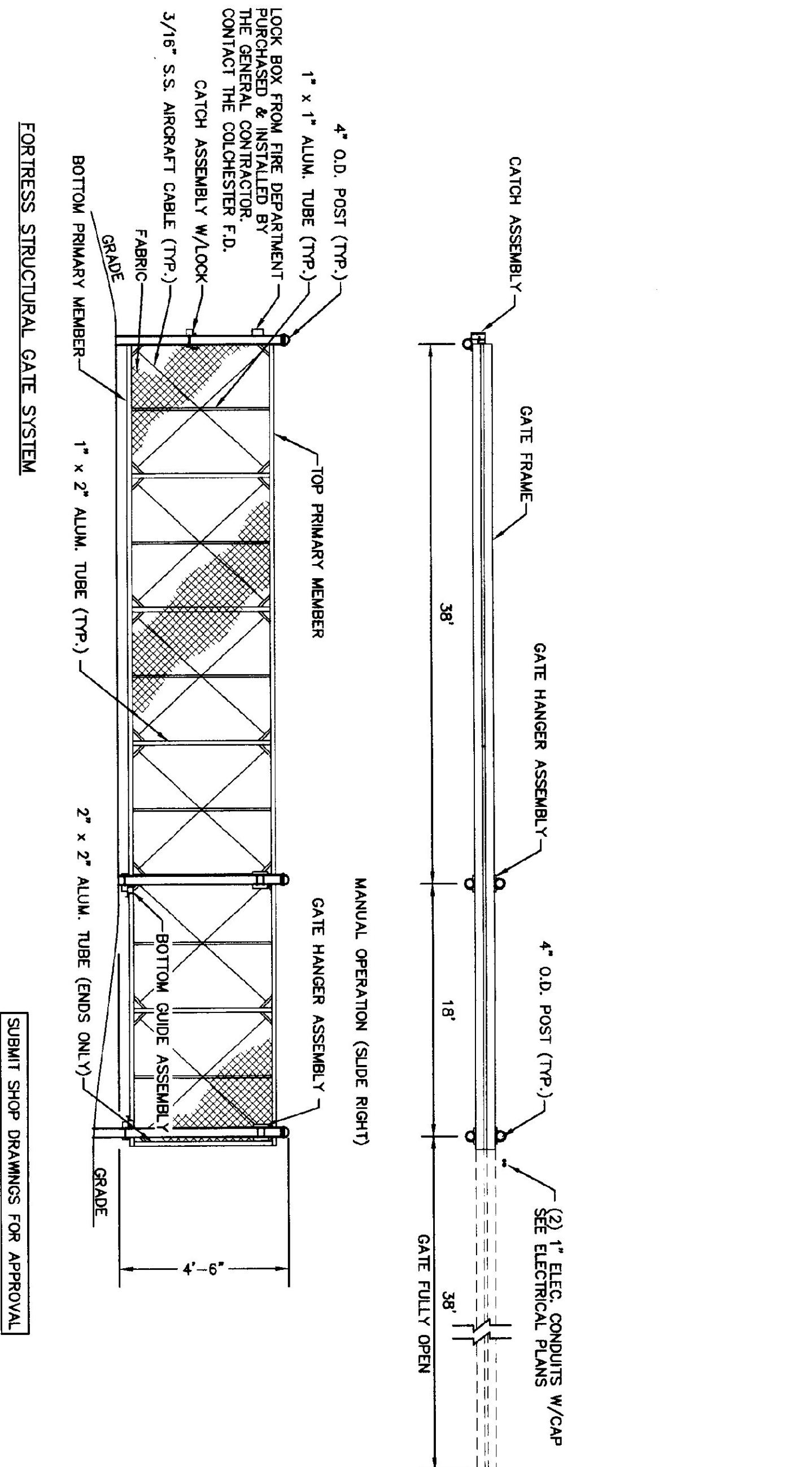
NOTES:
 TREE ROOT COLLAR SHALL BEAR SAME RELATION TO FINISHED GRADE AS IT BORE TO PREVIOUSLY EXISTING GRADE EXCEPT IN AREAS OF COMPACTED FILL. PLANT TRESS SO ROOT COLLAR IS 2'-3\"/>



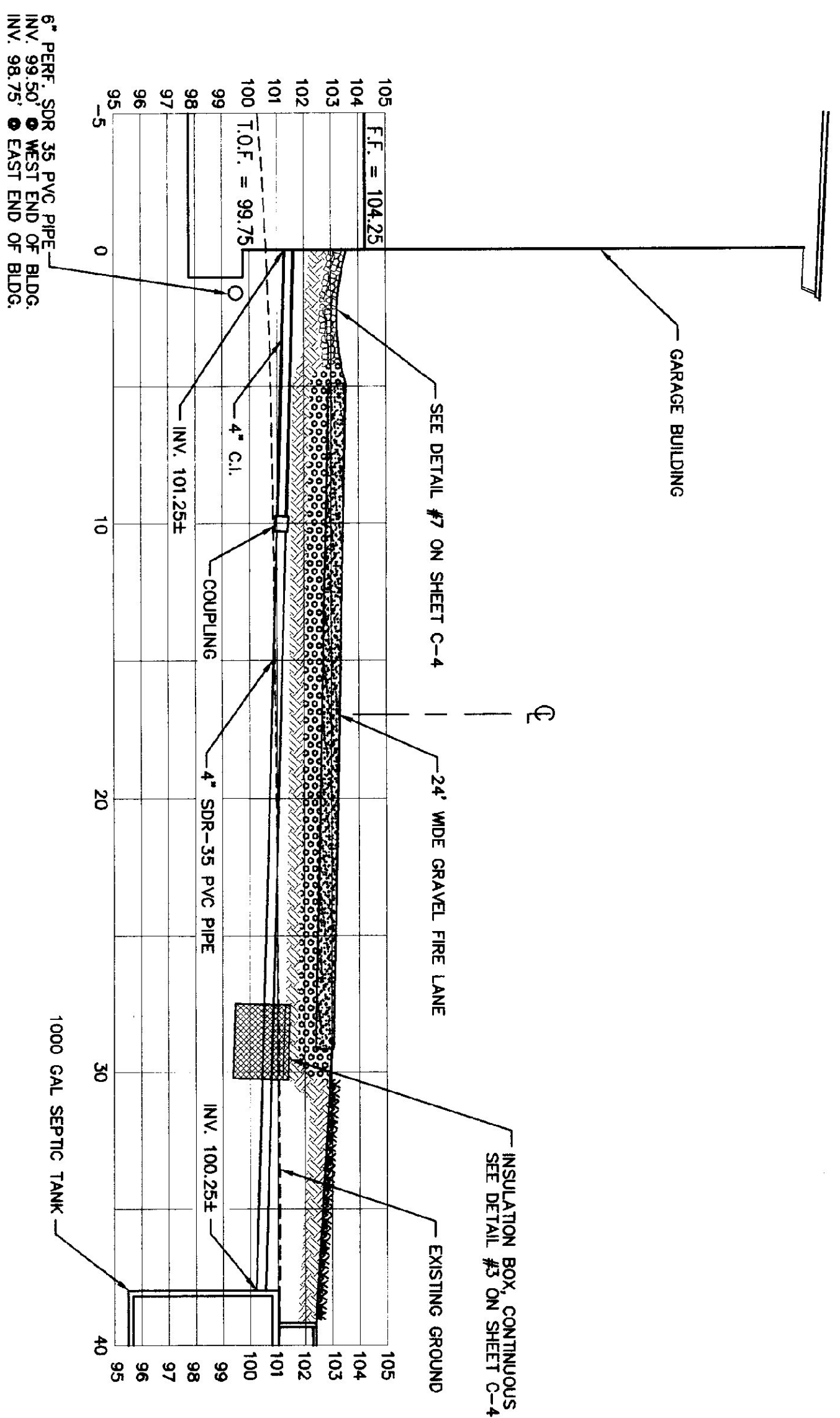
2 GATE POSTS DETAIL
N.T.S.



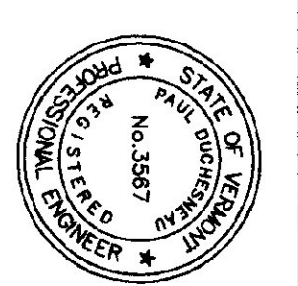
NOTES:
 1. Composition of backfill and bedding under roadway surface) of maximum dry density determined in the standard proctor test (ASTM D698).
 2. Bedding material shall not be placed on frozen subgrade.
 3. Approved backfill shall not contain any stones more than 1/2\"/>



4 GATE PLAN AND ELEVATION
N.T.S.



5 SANITARY SEWER PROFILE
SCALE: 1\"/>



DORE AND WHITTIER INC.
 ARCHITECTS • PROJECT MANAGERS
 0765 WILBERTON ROAD • SOUTH BURLINGTON • VERMONT
CHAMPLAIN CONSULTING ENGINEERS
 120 FINE ROAD, 2ND FLOOR BOX 488
 COLCHESTER, VERMONT 05446
 (802) 983-9000
 (802) 983-9000
 (802) 983-1870 FAX

STATE OF VERMONT
 DEPARTMENT OF BUILDINGS
 AND GENERAL SERVICES
 AGENCY OF ADMINISTRATION
 MONTPELIER, VERMONT

AGENCY OF TRANSPORTATION
 COLCHESTER MAINTENANCE FACILITY
 CHIMNEY CORNERS
 COLCHESTER, VERMONT

REVISIONS
11/30/99 EROSION CONTROL REVISIONS
1/8/00 GENERAL REVISIONS

SCALE: AS NOTED
 DATE: OCT. 15, 1999
 DRAWN BY: CCE
 APPR. BY: