

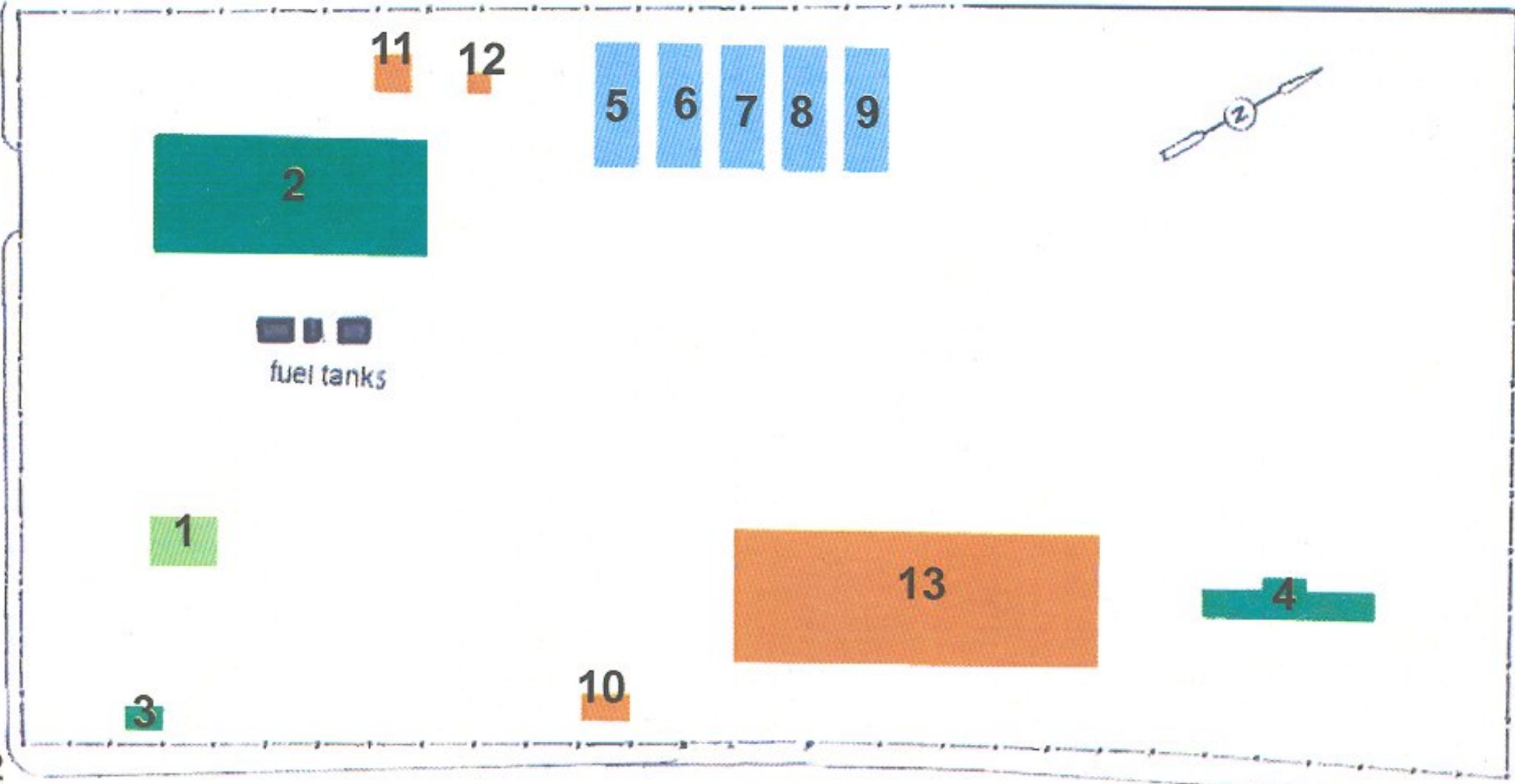


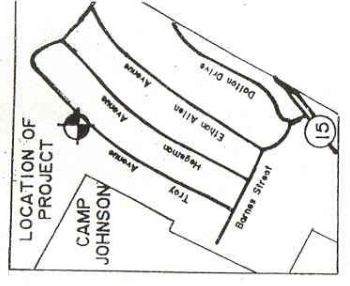
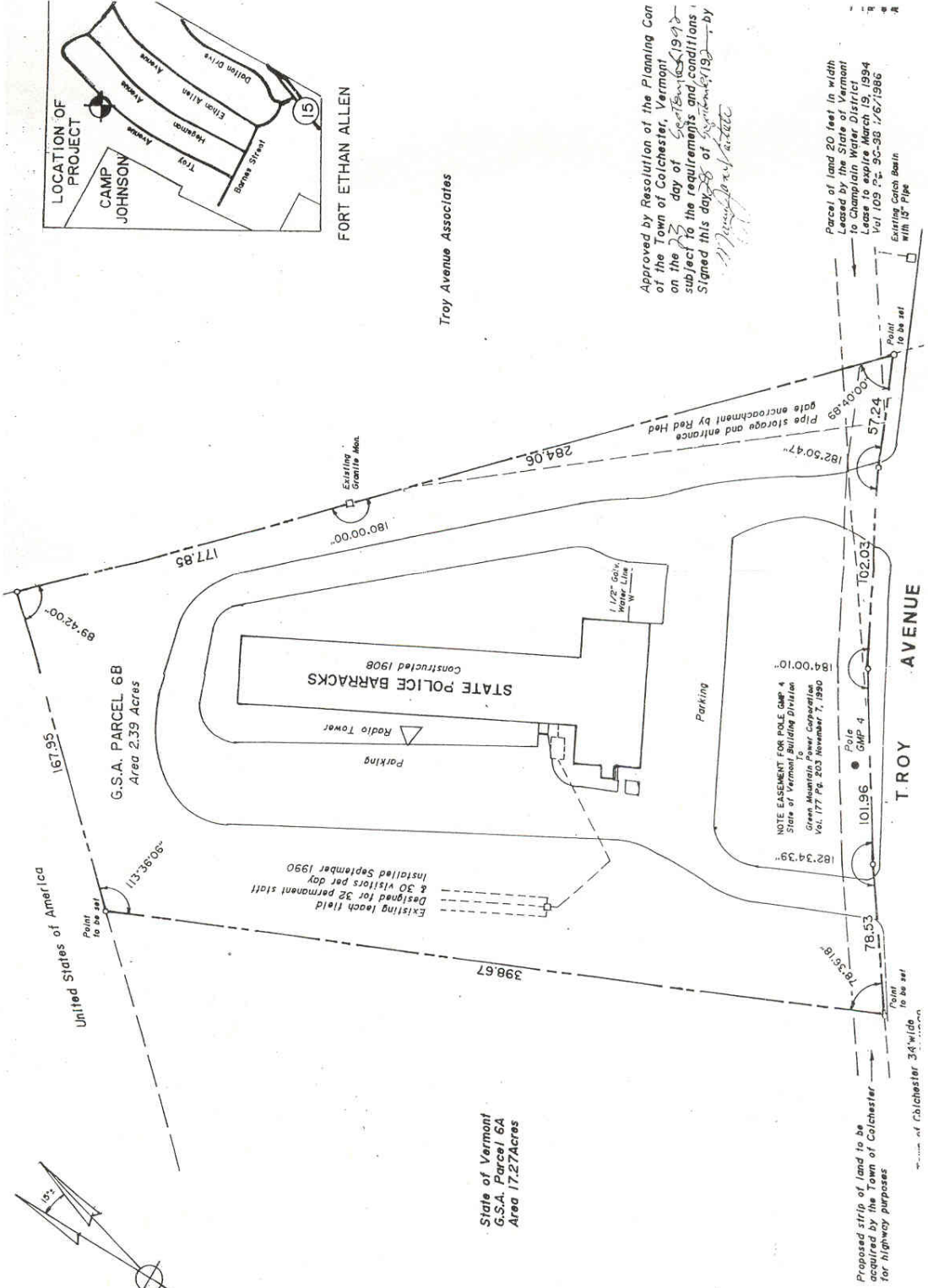
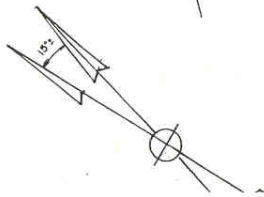
Ft Ethan Allen Complex



BARNES AVE.

To VT 15





Troy Avenue Associates

Approved by Resolution of the Planning Commission of the Town of Colchester, Vermont on the day of September 1992 subject to the requirements and conditions Signed this day of September 1992 by [Signature]















VERMONT HIGHWAY DEPT
HOT MIX DIVISION
FIELD LABORATORY







MYERS

655-4312

