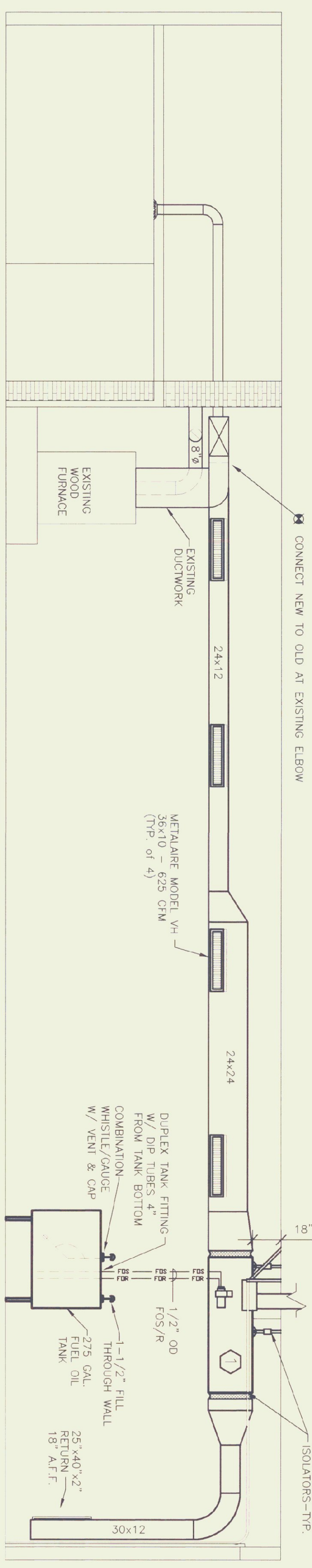


FLOOR PLAN
1/4" = 1'-0"

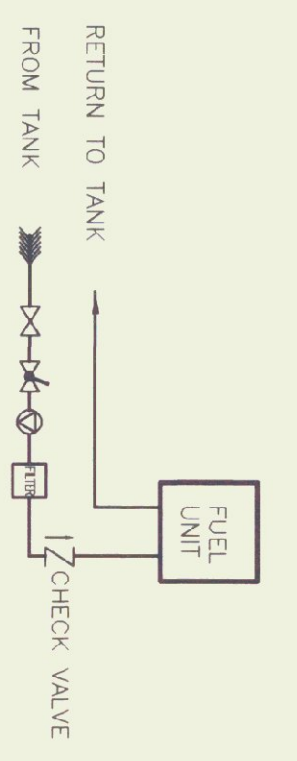


SECTION B
1/4" = 1'-0"

FURNACE SCHEDULE

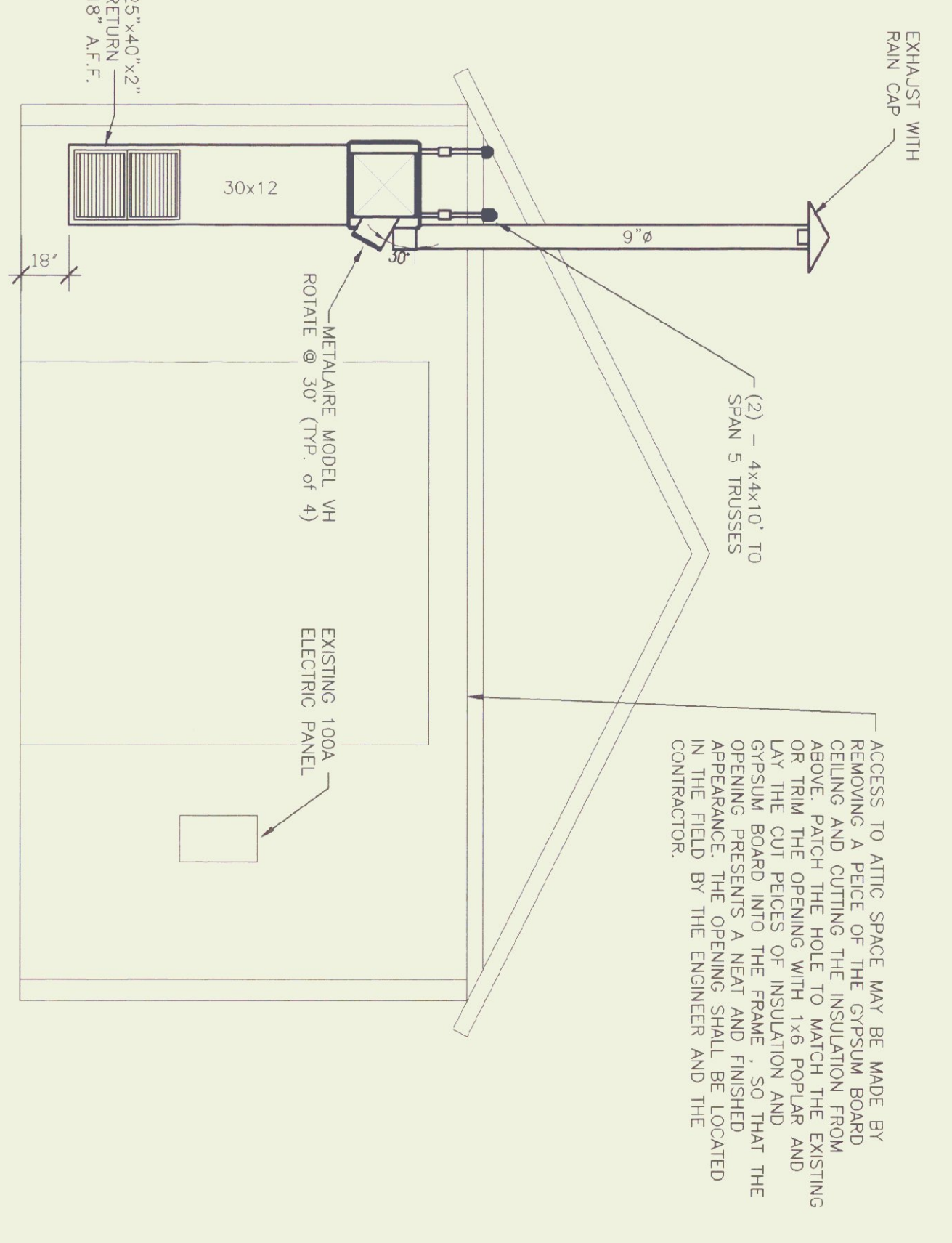
MAKE / MODEL	BTU OUTPUT	FUEL	CFM	BLOWER HP	VOLTAGE	FLUE
JACKSON - CHURCH 280-23	224,000	# 2 OIL	2440	3/4	115	9"

FUEL PIPING SCHEMATIC
N.T.S.

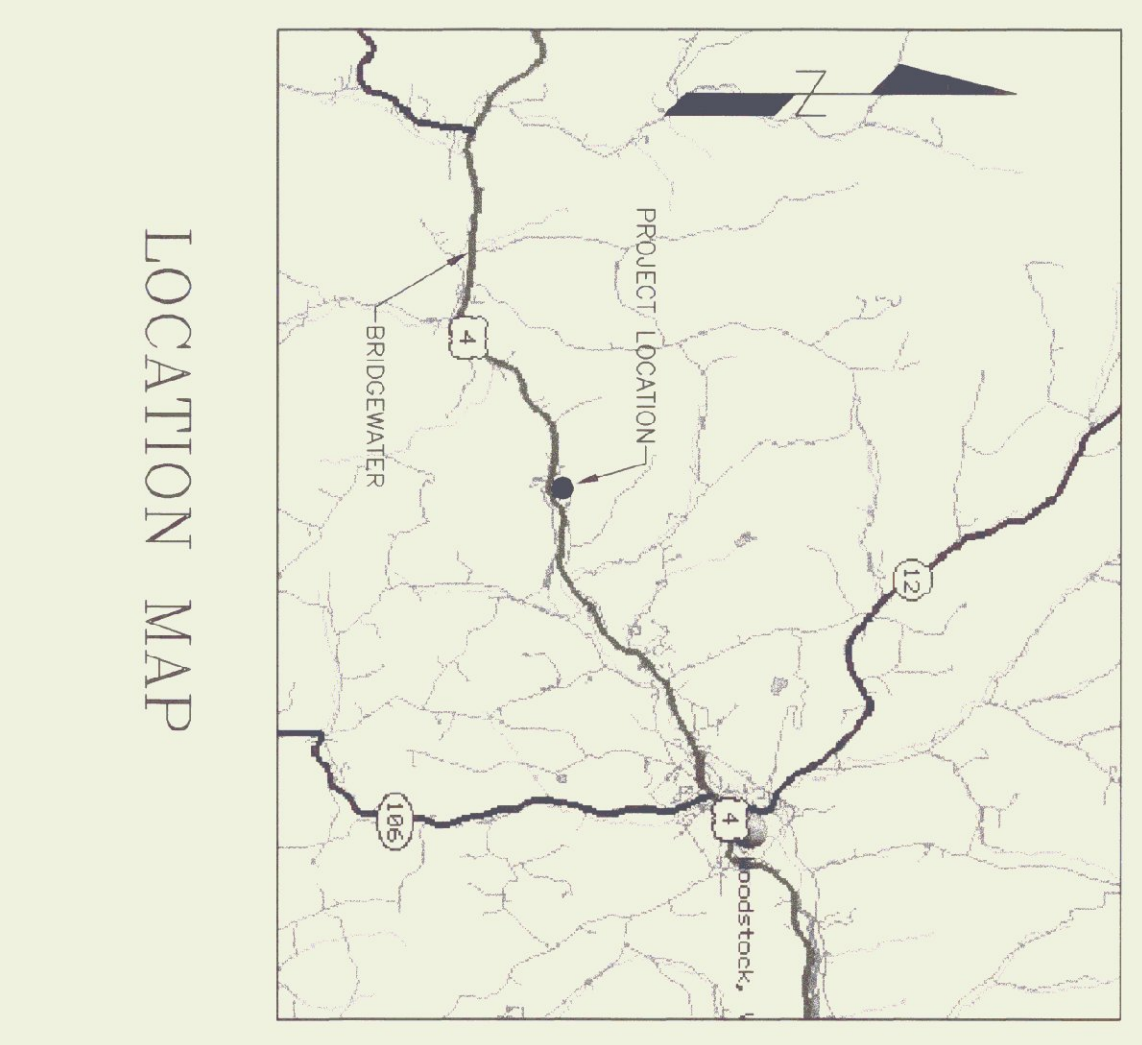
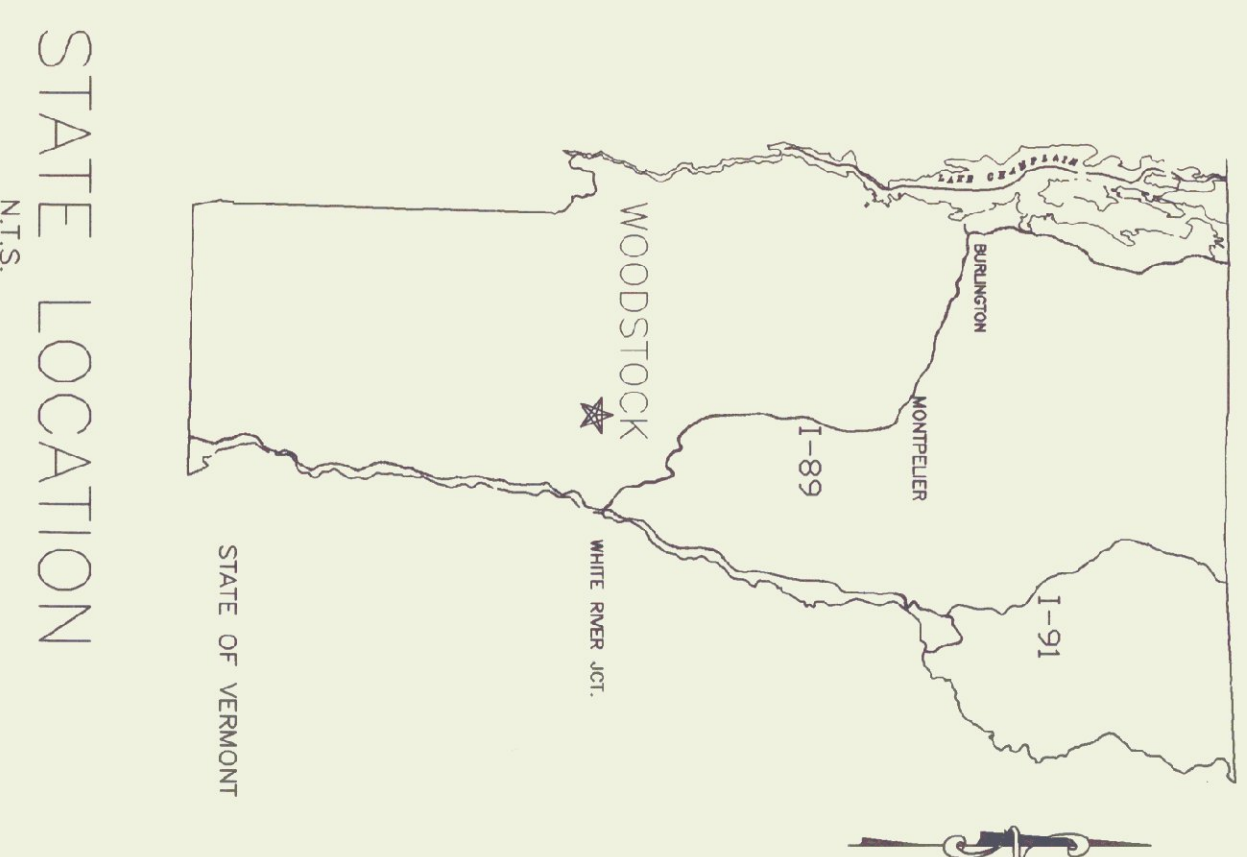


LEGEND

- FD FIRE DAMPER
- VD VOLUME DAMPER
- VT THERMOSTAT X: O = OIL W = WOOD
- FP FULL PORTED BALL VALVE
- FV FLEXIBLE VALVE SPRING LOADED W/LEVER & WIRE TO POSSIBLE LINK @ BURNER
- WV WEESTER OSV
- PV PRESSURE VACUUM GAUGE
- UN UNION
- AA AUTOMATIC AIR VENT ON 6" AIR CHAMBER STRAP ON ADJUST SET @ 120F
- ST STRAINER
- DR DRAIN
- VI VIBRATION ISOLATOR
- FO FUEL OIL TRANSFER PUMP
- BS BURNER SAFETY SWITCH



SECTION A
1/4" = 1'-0"



STATE LOCATION
N.T.S.

LOCATION MAP

REVISIONS	SCALE: AS NOTED
	DATE: APRIL 30, 1999
	DRAWN BY: R. PRATT
	APPR. BY:

WOOD/OIL BURNING FURNACE REPLACEMENT
WOODSTOCK A.O.T. GARAGE
PLANS & DETAILS
WOODSTOCK, VERMONT



STATE OF VERMONT
Department of Buildings and General Services
Agency of Administration
Montpelier, Vermont

