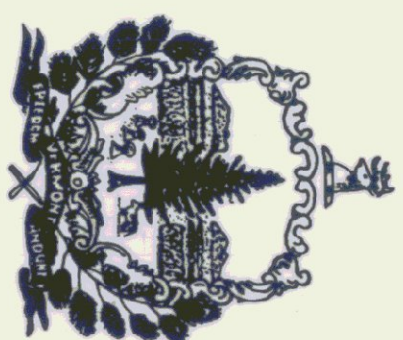


STATE OF VERMONT  
 AGENCY OF TRANSPORTATION



FIVE BAY MAINTENANCE GARAGE

WINDSOR, VERMONT

JULY 1983

AGENCY OF ADMINISTRATION  
 DIVISION OF STATE BUILDINGS  
 MONTPELIER, VERMONT  
 IRVING A. BATES, DIRECTOR

AGENCY OF TRANSPORTATION  
 MONTPELIER, VERMONT  
 PATRICK J. GARAHAN, SECRETARY

INDEX OF DRAWINGS

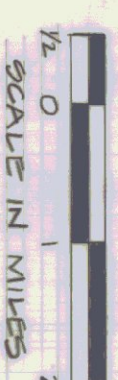
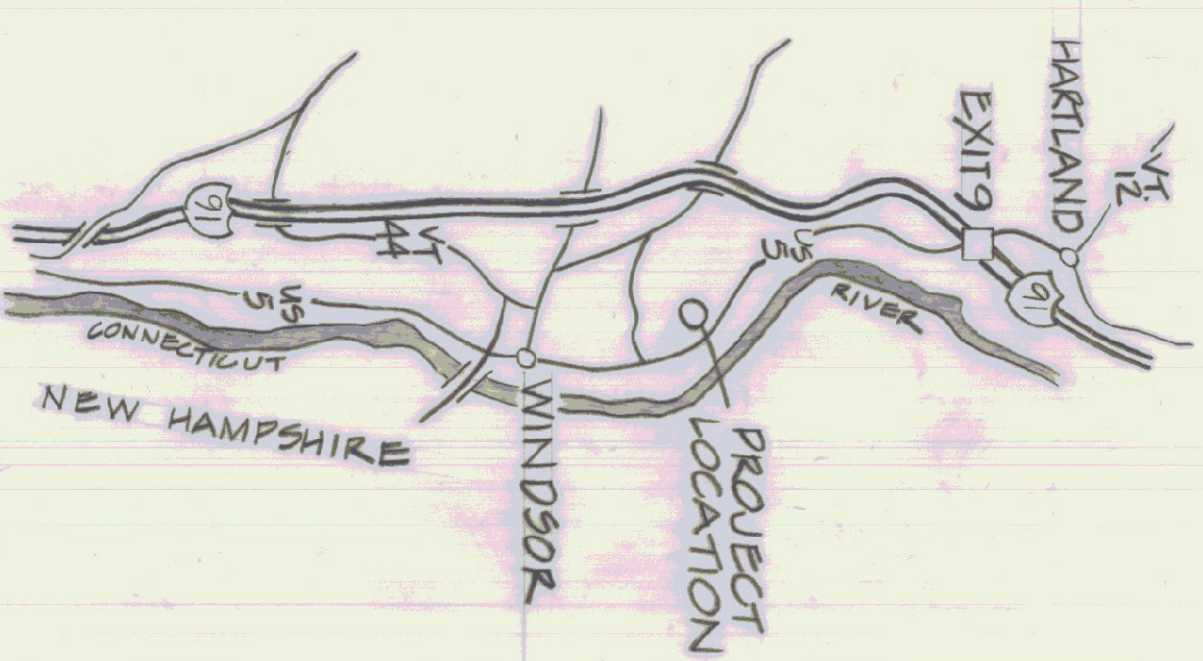
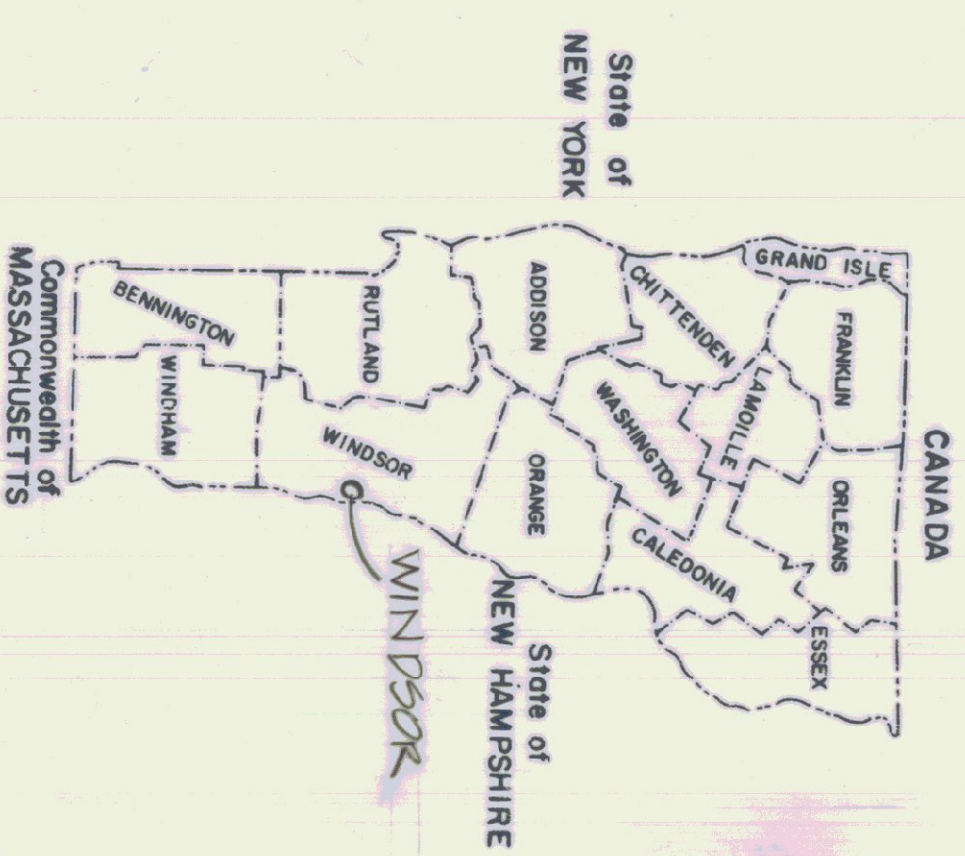
- S-1 50 SCALE SITE PLAN
- S-2 20 SCALE SITE PLAN
- A-1 FOUNDATION PLAN, SECTIONS AND DETAILS
- A-2A STRUCTURAL STEEL FRAMING
- A-3 FLOOR PLANS, 1/4" SECTION AND DOOR AND WINDOW SCHEDULES
- A-4 GARAGE EXTERIOR ELEVATIONS
- A-5 INTERIOR ELEVATIONS AND SECTIONS
- A-6A WALL SECTIONS/DOOR AND WINDOW DETAILS
- A-6B EXTERIOR DOOR DETAILS & PAINT SCHEDULE
- A-7 STAIR, LOFT AND WALL DETAILS
- P-1 PLUMBING SYSTEM PLAN
- M&E-1 MECHANICAL AND ELECTRICAL PLAN

ABBREVIATIONS

F.F.	FINISHED FLOOR	V.&H.	VERTICAL & HORIZONTAL
F.O.F.	FACE OF FOUNDATION	O.C.	ON CENTER
F.O.S.	FACE OF STUDS	A.B.	ANCHOR BOLD
T.O.F.	TOP OF FOOTING	N.T.C.	NOT IN CONTRACT
H.C.I.	HUBLESS CAST IRON		

KEY

	EARTH
	SAND
	CONCRETE
	GRAVEL
	METAL ROOF DECK INSULATION
	EXPANDED STYROFOAM INSULATION - TYPE SM DW
	FIBERGLASS INSULATION
	CONTINUOUS STRUCTURAL WOOD
	DISCONTINUOUS WOOD BLOCKING
	WOOD FACE GRAIN
	WOOD END GRAIN
	OSB (ORIENTED STRAND BOARD) INTERIOR SHEATHING
	STEEL
	CONCRETE



SUBMITTED BY ORDER OF THE STATE TRANSPORTATION BOARD

APPROVED \_\_\_\_\_ DATE \_\_\_\_\_

DIRECTOR OF ENGINEERING AND CONSTRUCTION  
 DEPARTMENT OF TRANSPORTATION  
 FEDERAL HIGHWAY ADMINISTRATION

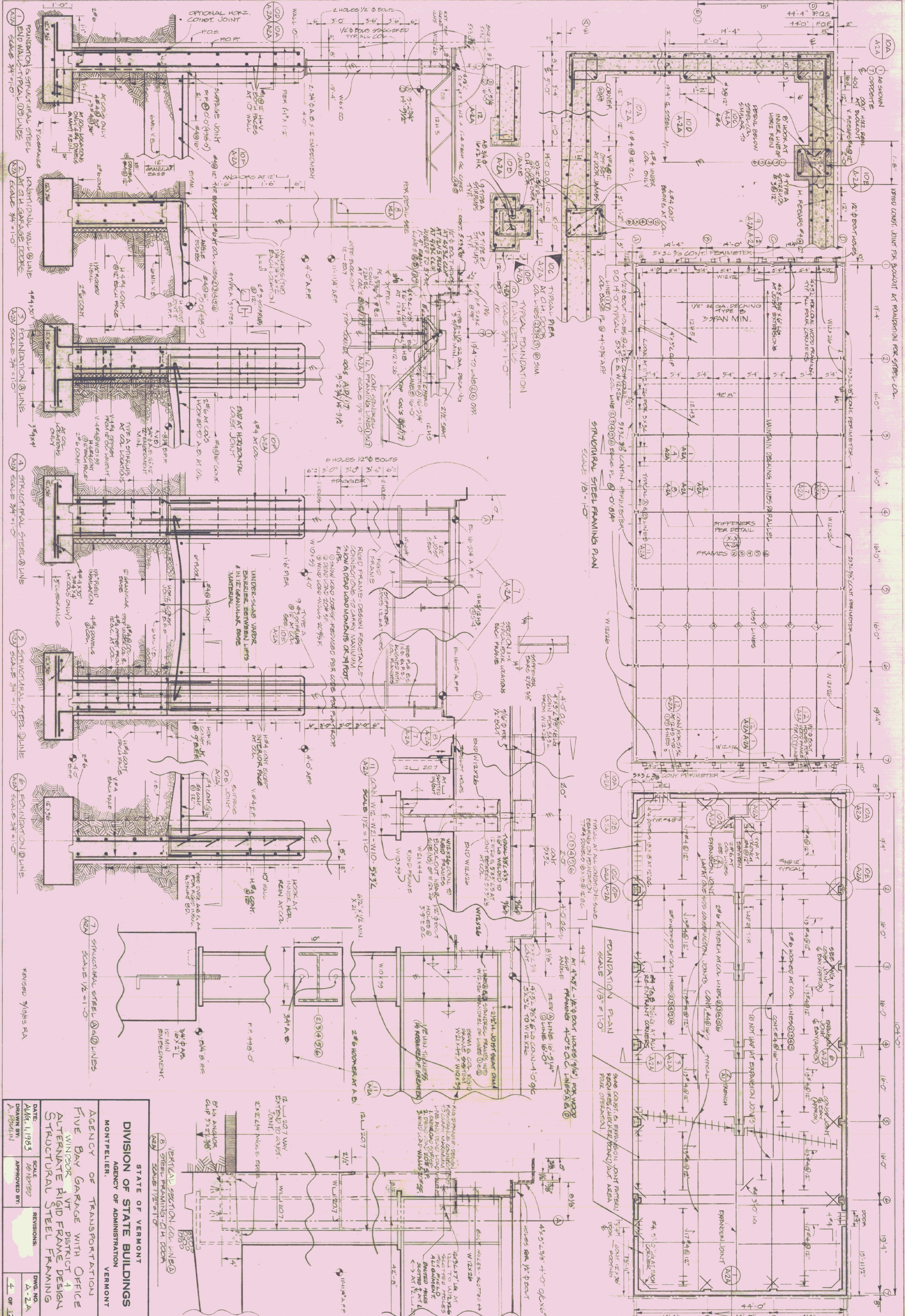
APPROVED \_\_\_\_\_ DATE \_\_\_\_\_

DIVISION ADMINISTRATOR

PROJECT \_\_\_\_\_

SHEET 1 OF \_\_\_\_\_ SHEETS





STATE OF VERMONT DIVISION OF STATE BUILDINGS AGENCY OF ADMINISTRATION MONTPELIER, VERMONT	
AGENCY OF TRANSPORTATION FIVE BAY GARAGE WITH OFFICE WINDSOR VT DISTRICT 4 ALTERNATE RIGID FRAME DESIGN STRUCTURAL STEEL FRAMING	
DATE AUG. 1, 1983	SCALE AS NOTED
DRAWN BY A. FORTIN	APPROVED BY
REVISIONS:	DWG. NO. A-2A
	4 OF 12

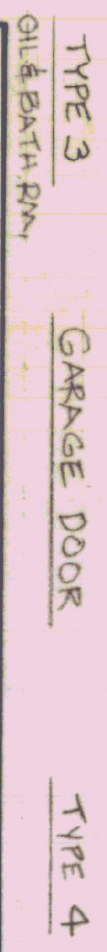


**DOOR SCHEDULE**

NO.	QTY	SIZE	TYPE	FINISH	MATERIAL	HARDWARE	REMARKS
D1, D2, D3	3	3'-0" x 7'-0"	1	C	INSULATED METAL	D1-D3-1	W/ GLASS WEATHERSTOP & SWEEP THERMAL BREAK FRAME
D4	1	2'-8" x 6'-8"	2	C	HOLLOW METAL	2	
D5	1	"	3	B	"	4	
D6	1	"	3	C	"	3	
D7-11	5	14'-0" W x 12'-0" H	4	C	INSULATED WOOD	-	OVERHEAD DOOR SERIES 724 W/ LEVANT WINDOWS & FULL LOCK ROD

**WINDOW SCHEDULE**

NO.	QTY	TYPE	FRAME MATERIAL	ROUGH OPENING	REMARKS
A	10	AWNING	METAL	3'-6 1/2" W x 2'-6 1/2" H	ADORN BLDG. COMPONENTS # 2634C
B	1	FIXED	METAL	3'-4" W x 3'-4" H	HOLLOW METAL SPEC 08100



STATE OF VERMONT  
 DIVISION OF STATE BUILDINGS  
 AGENCY OF ADMINISTRATION  
 MONTPELIER, VERMONT

AGENCY OF TRANSPORTATION  
 FIVE BAY GARAGE WITH OFFICE  
 WINDSOR, VT DISTRICT 4

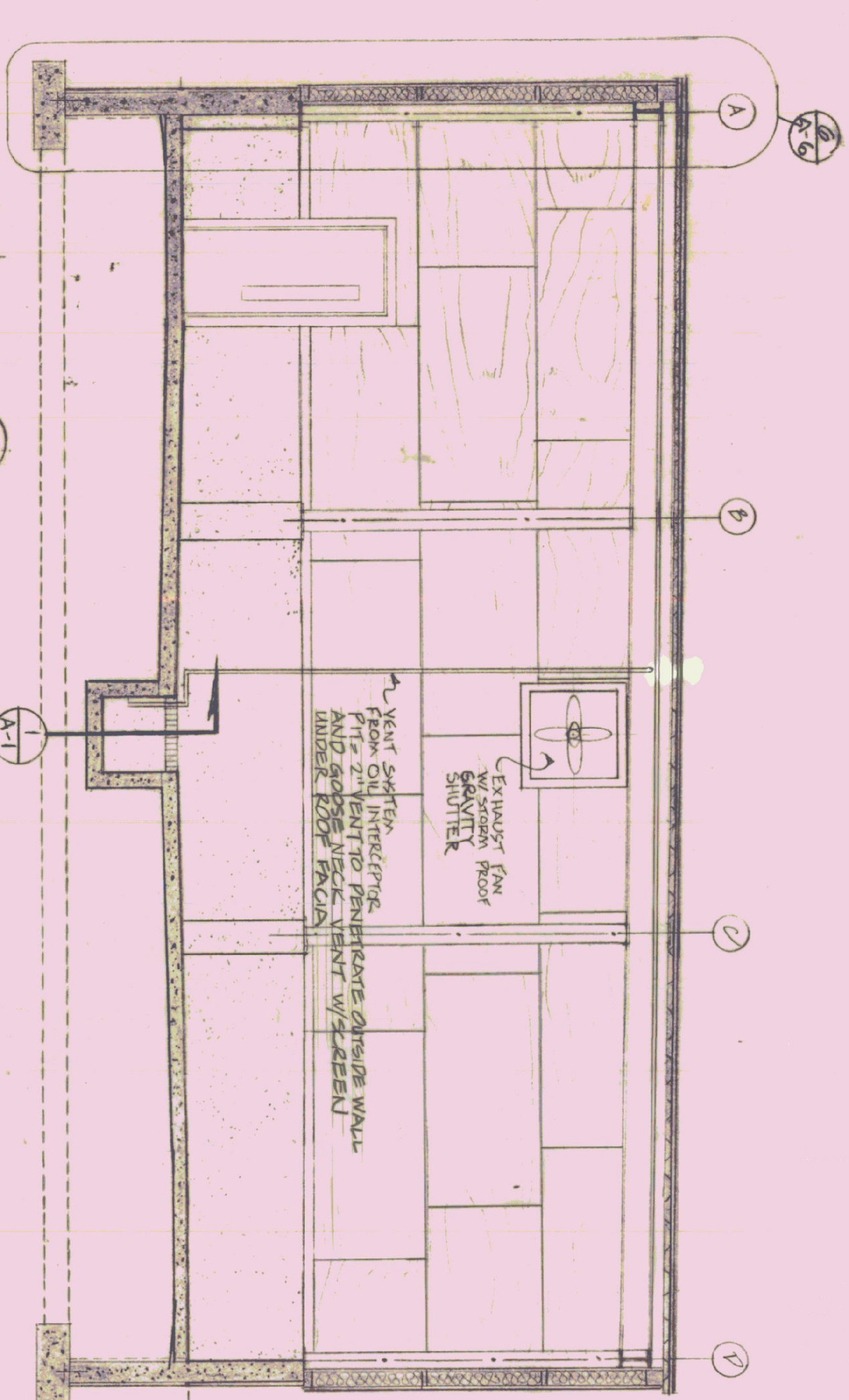
FLOOR PLANS, 1/4" SECTION, & DOOR & WINDOW SCHEDULES

DATE: AUG 1, 1985  
 DRAWN BY: AS NOTED  
 APPROVED BY: ST. CESTRUM

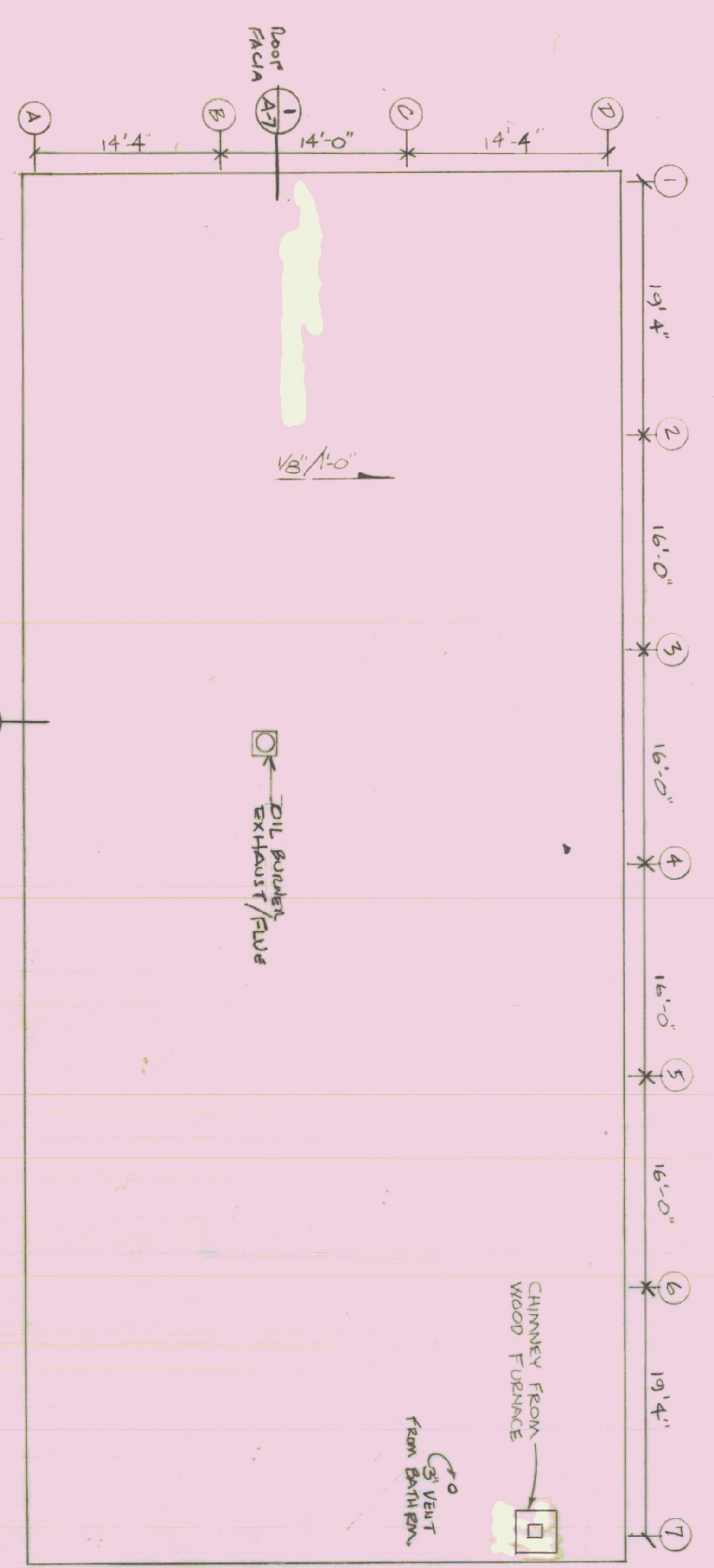
SCALE: AS NOTED  
 REVISIONS:  
 DWG. NO. A-5  
 5 OF 12



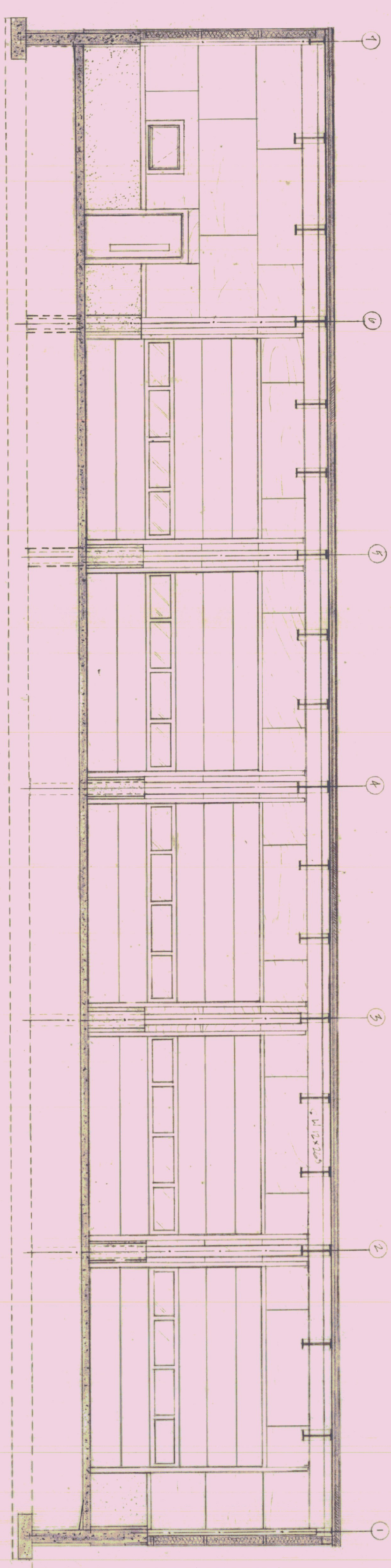
CROSS SECTION  
SCALE: 1/4"=1'-0"  
A-5 (LOOKING TO WEST)



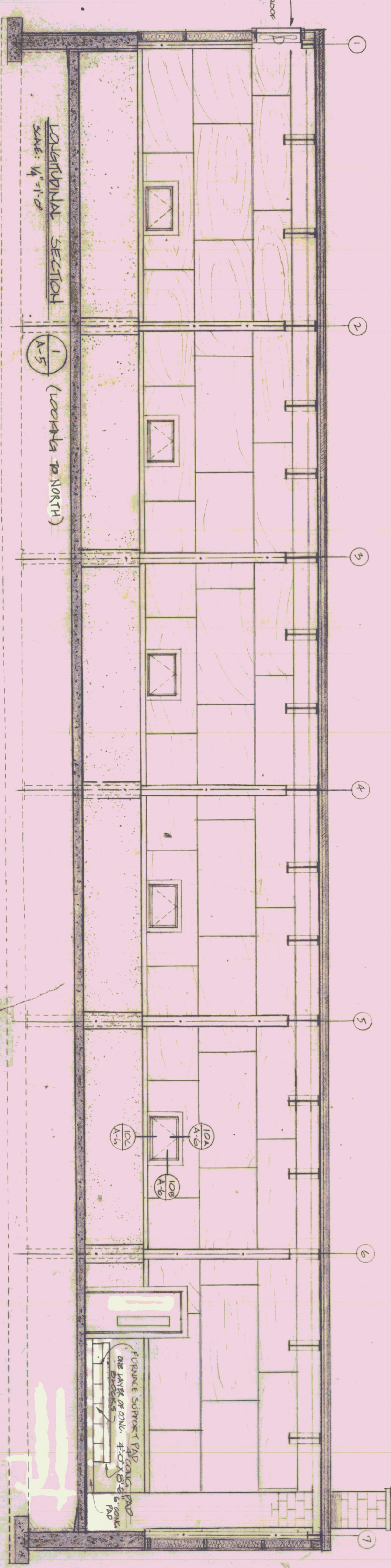
ROOF PLAN  
SCALE: 1/8"=1'-0"



LONGITUDINAL SECTION 2  
SCALE: 1/4"=1'-0"  
(LOOKING TO SOUTH)



LONGITUDINAL SECTION 1  
SCALE: 1/4"=1'-0"  
(LOOKING TO NORTH)

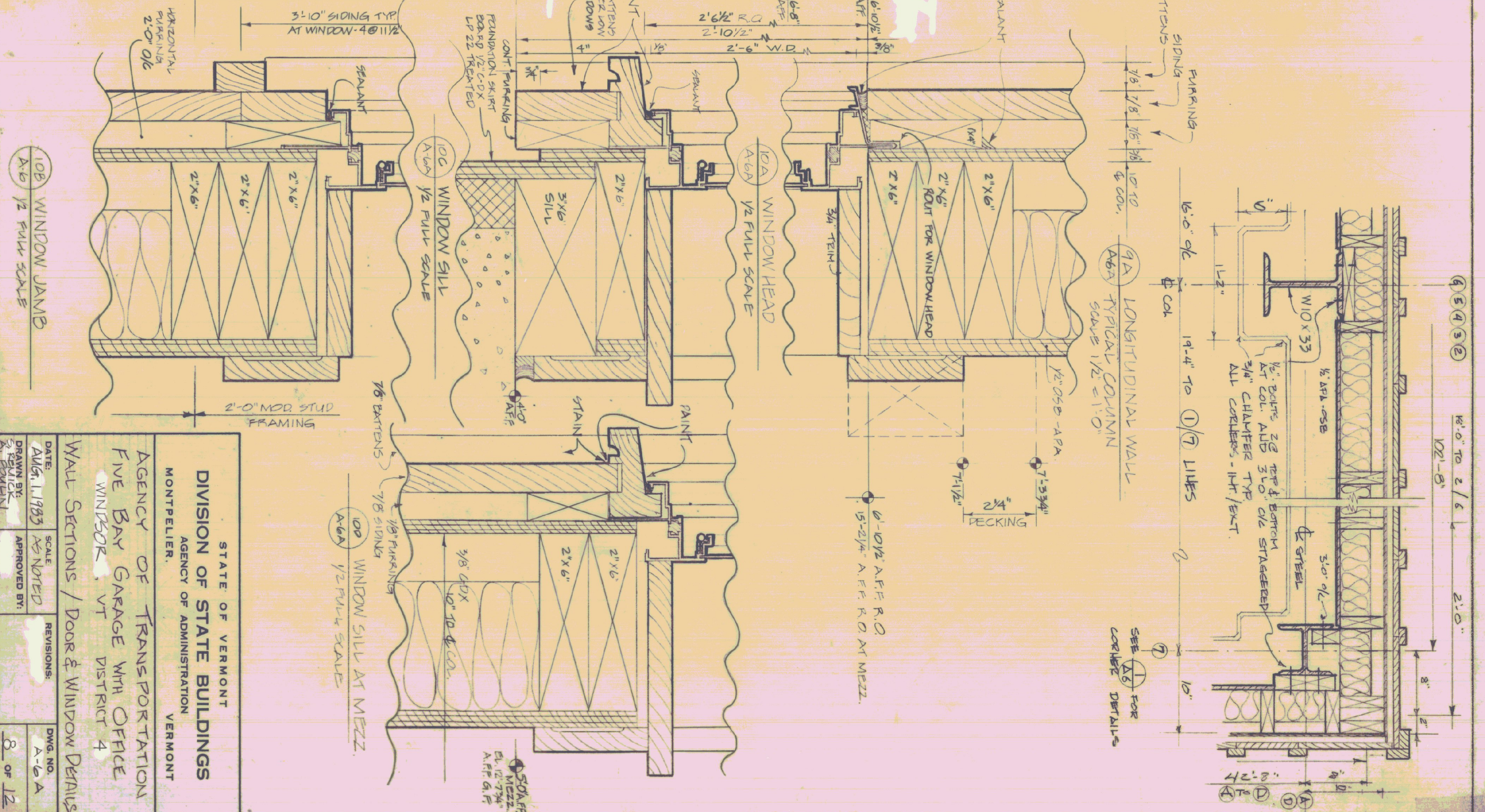
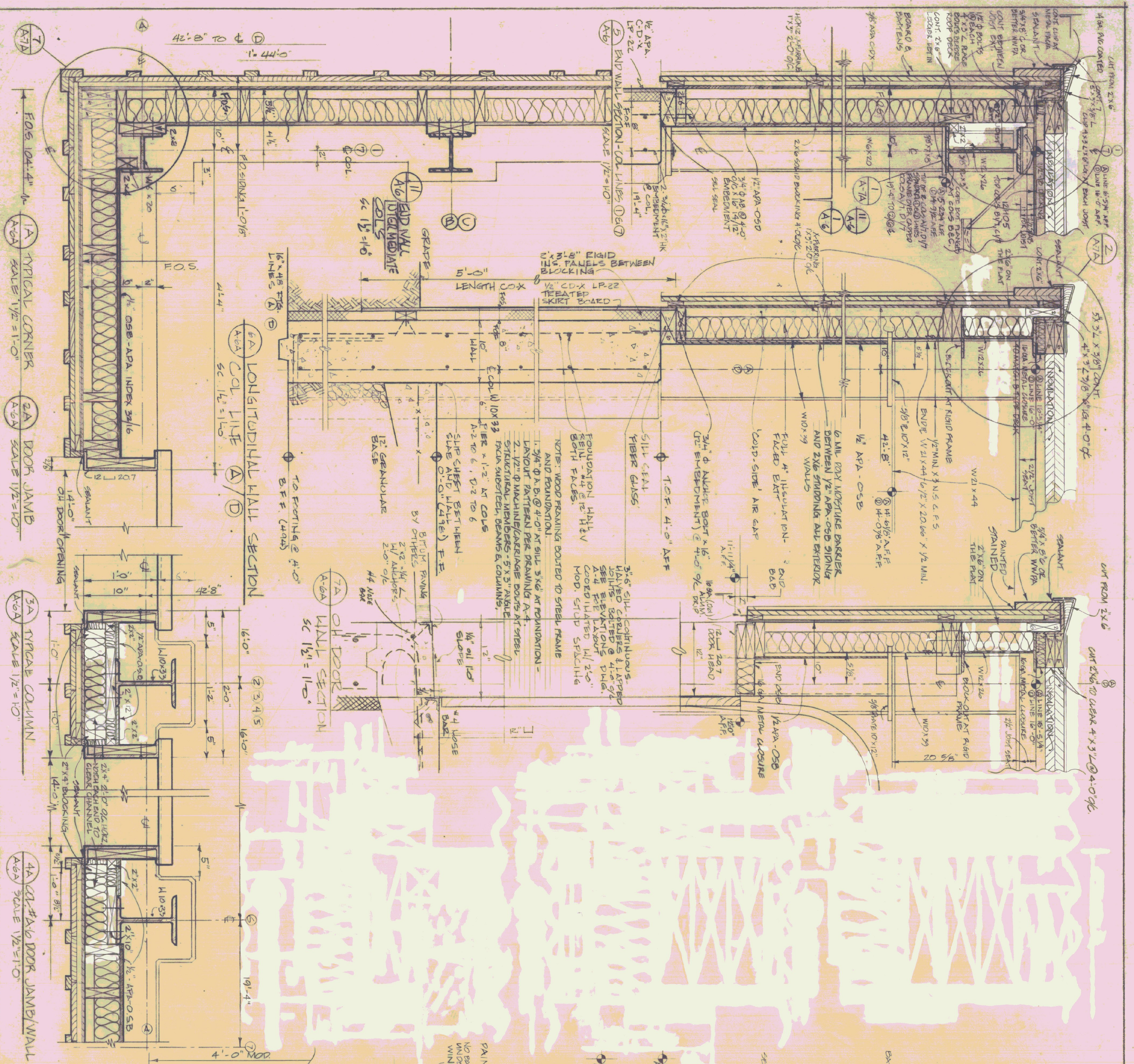


STATE OF VERMONT  
DIVISION OF STATE BUILDINGS  
AGENCY OF ADMINISTRATION  
MONTPELIER, VERMONT

AGENCY OF TRANSPORTATION  
FIVE BAY GARAGE WITH OFFICE  
WINDSOR, VT DISTRICT 4

INTERIOR ELEVATIONS & SECTIONS

DATE: AUG 1, 1983	SCALE: AS NOTED	REVISIONS:	DWG. NO. A-5
DRAWN BY: RLB	APPROVED BY:		7 OF 12



STATE OF VERMONT DIVISION OF STATE BUILDINGS AGENCY OF ADMINISTRATION MONTPELIER, VERMONT		AGENCY OF TRANSPORTATION FIVE BAY GARAGE WITH OFFICE WINDSOR, VT DISTRICT 4	
DATE: AUG 1, 1953	SCALE: AS NOTED	REVISIONS:	DWG. NO. A-6-A
DRAWN BY: [Signature]	APPROVED BY: [Signature]		8 OF 12
WALL SECTIONS / Door & Window Details			

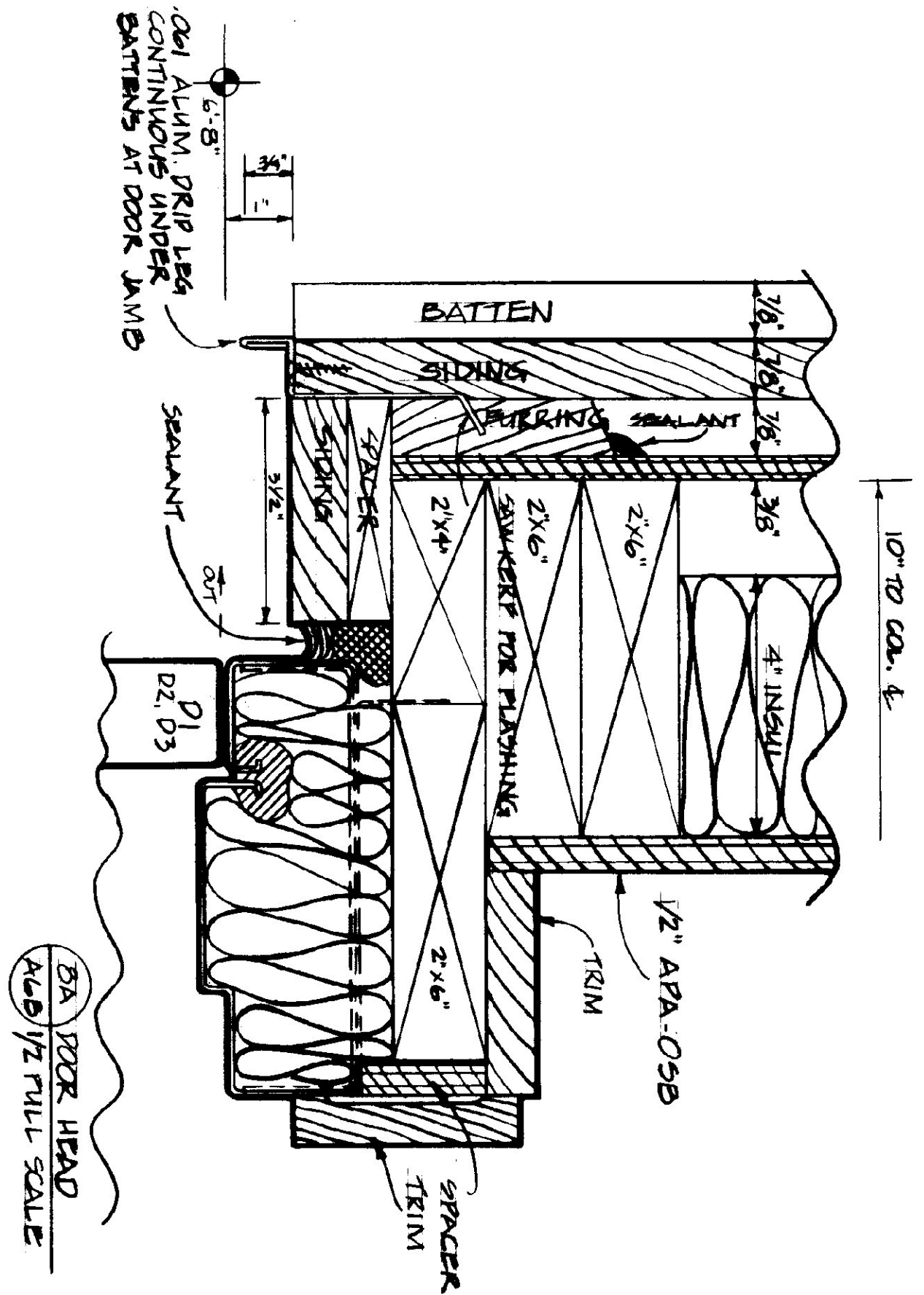
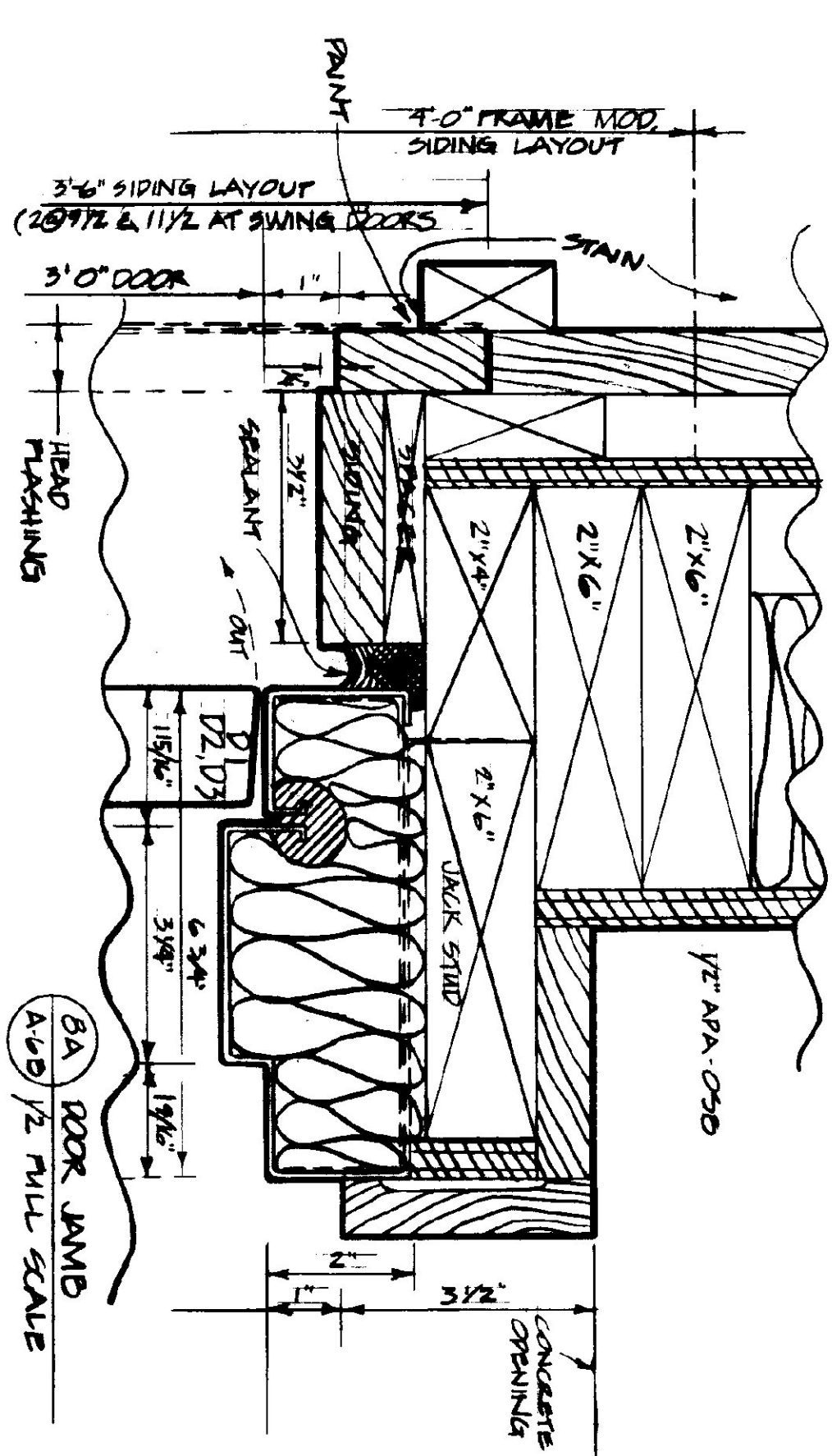
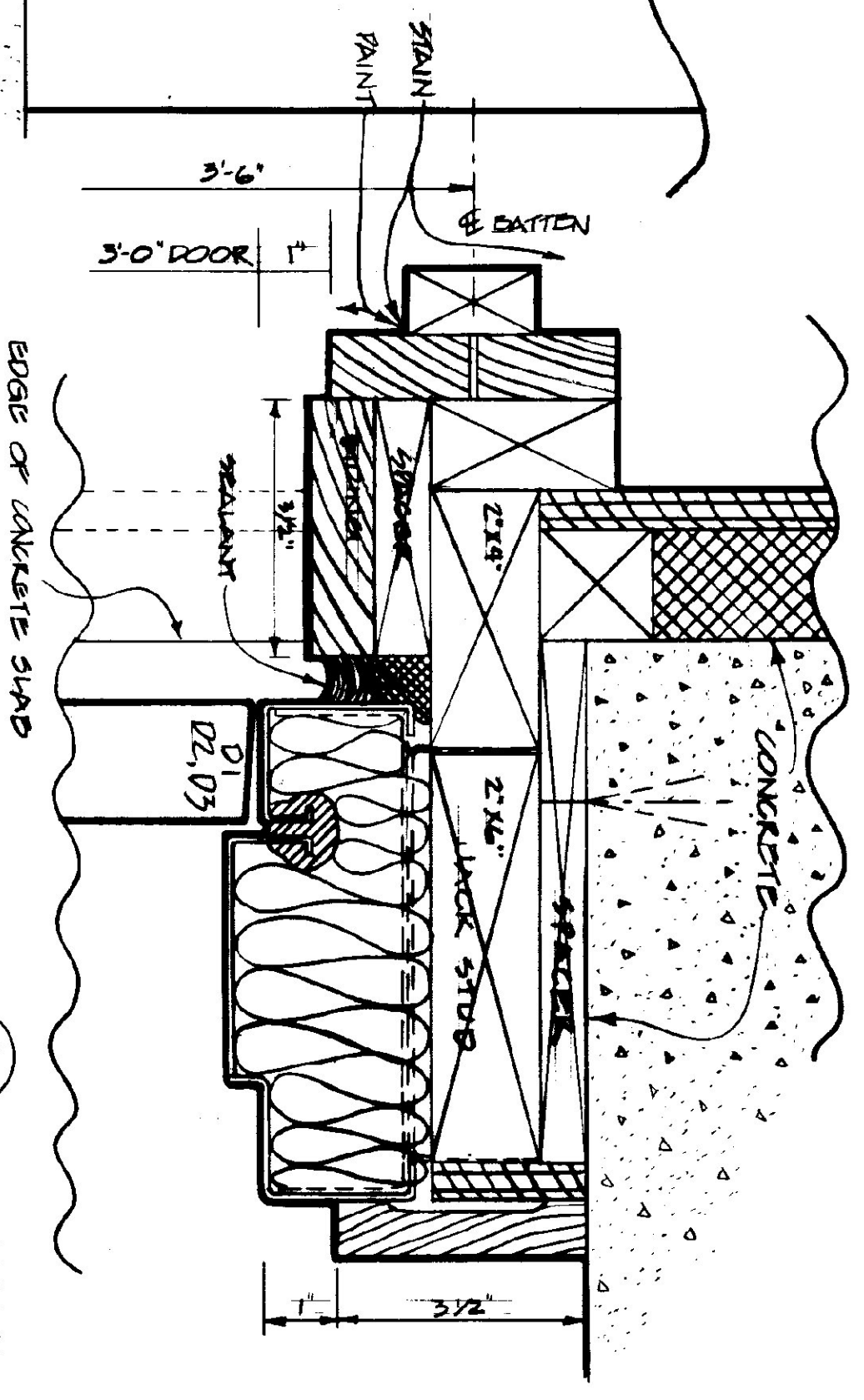
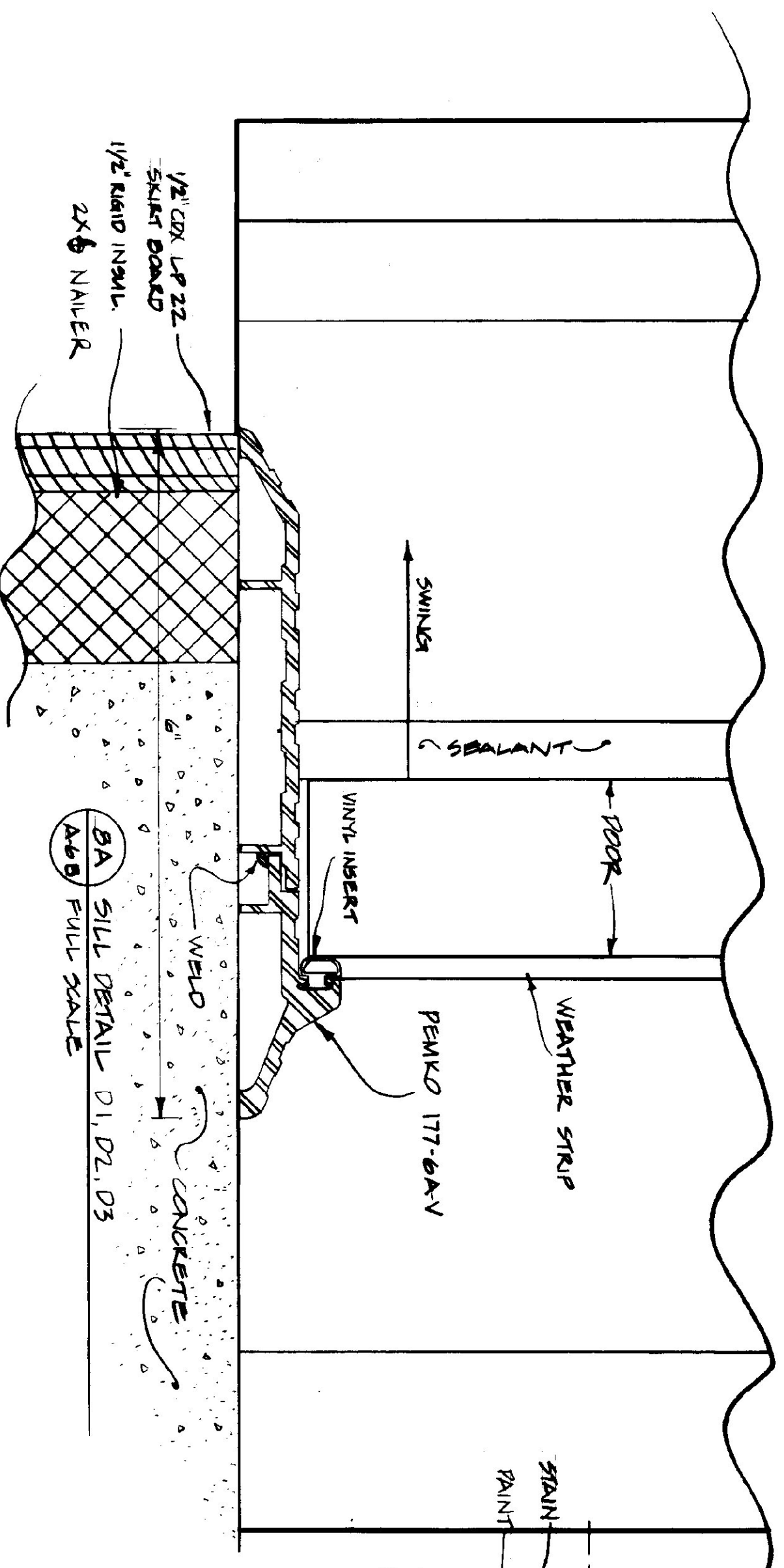
# INTERIOR FINISH SCHEDULE

AREA	FLOOR	BASE	WALLS				CEILING		REMARKS
			WEST	NORTH	EAST	SOUTH			
FIVE BAYS INCLUDING WOOD FINNICE AREA	C	H	C	C	C	C	C.S.	PELTON'S RETARDED 210 PAINT WITH ONE COAT LATER FINISHES INTERIOR OF BOTH BY BRANLUMIN MOBILE *FIT BASE TO BE USED ON OFFICE BLOCK WALLS EXPOSED TO INSIDE OF GARAGE	
	C	H	C	C	C	C	C.S.		
OFFICE	C	H	C	C	C	C	WD S		
GREASE & OIL STORAGE	C	H	C	C	C	C	WD S		
BATHROOM	C	H	C	C	C	C	WD S		
STORAGE LOFT	WD	WD	WD	WD	WD	WD	M		
STAIR	STAIN	& TWO COATS OF POLYURETHANE					C.S.		

## KEY

- CONSTRUCTION
- APPLIED FINISH
- BCR CONCRETE BLOCK
- C CONCRETE
- C.S. SEE CONSTRUCTION SPECIFICATIONS
- H HARDENED
- M METAL BRACING/STEEL STRUCTURES
- OSB ORIENTED STRAND BOARD
- P RETARDED 210 - 2 COATS
- PG PITT GLAZE
- SEP STAIN & TWO COATS OF SATIN POLYURETHANE
- T THROUGH SYSTEM
- WD WOOD DECK
- WB WOOD BASE
- WR WOOD RAILING

NOTE:  
 1. STRUCTURAL STEEL & METAL DECKING TO HAVE SHOP COAT  
 2. FIT BASE TO BE USED ON OFFICE BLOCK WALLS EXPOSED TO INSIDE OF GARAGE  
 3. FIT BASE TO BE USED ON OFFICE BLOCK WALLS EXPOSED TO INSIDE OF GARAGE



STATE OF VERMONT  
 DIVISION OF STATE BUILDINGS  
 AGENCY OF ADMINISTRATION  
 MONTPELIER, VERMONT

AGENCY OF TRANSPORTATION  
 FIVE BAY GARAGE WITH OFFICE  
 WINDSOR, VT. DISTRICT 4  
 EXTERIOR DOOR DETAILS & PAINT SCHEDULE

DATE: MAY 1, 1983  
 DRAWN BY: A. EDWIN  
 SCALE: 1/2\"/>

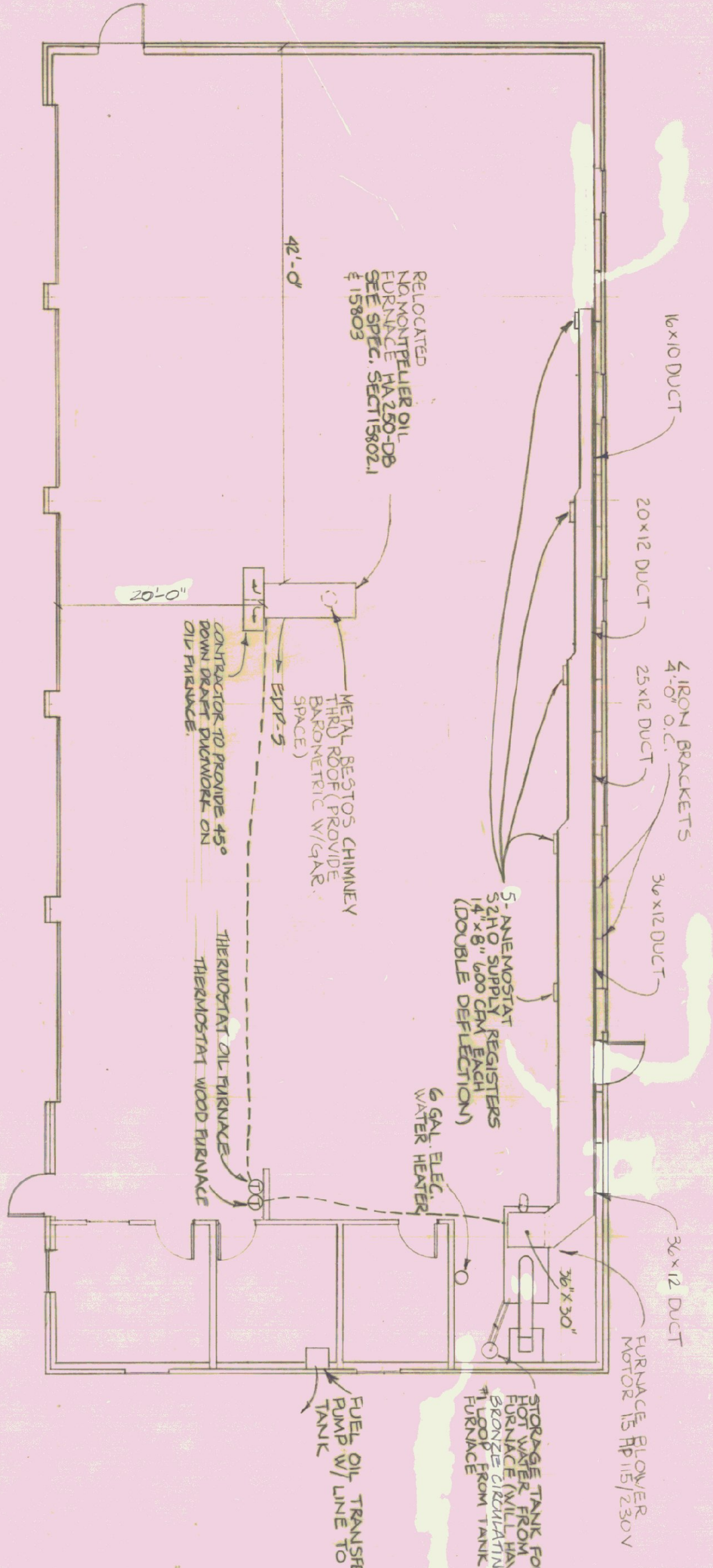
10\"/>





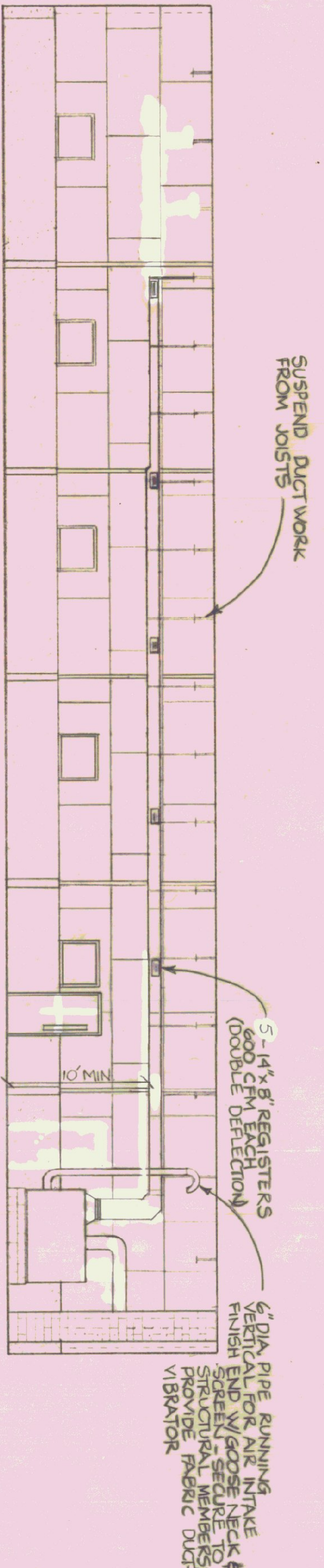
MECHANICAL PLAN

SCALE: 1/8" = 1'-0"



FURNACE ELEVATION

SCALE: 1/8" = 1'-0"



ELECTRICAL PLAN

SCALE: 1/8" = 1'-0"

