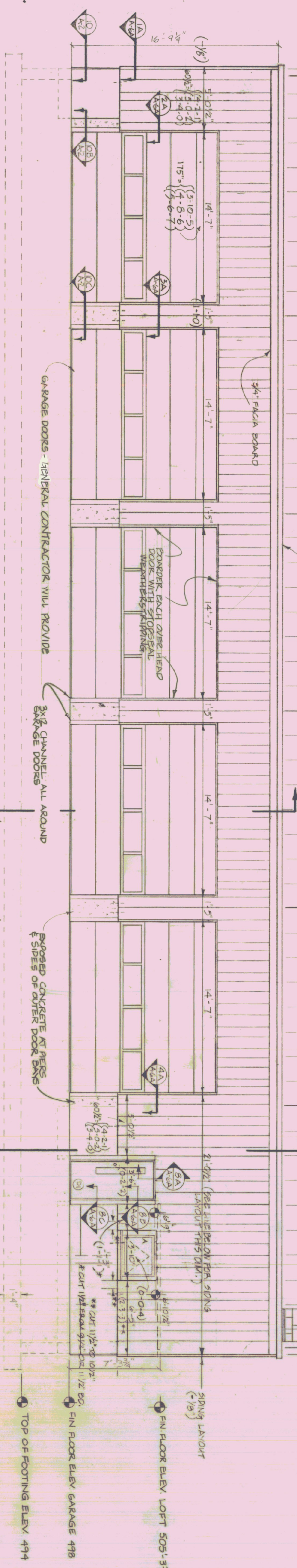


2'-0" MODULAR FRAMING LAYOUT

1ST AND 3RD # OF LAYOUT
 4 - 2 - 1
 DATA
 1/2" 9/2" 1 1/2"
 DOARDS

PVC COATED FACIA (TYPICAL)

CHIMNEY ELEV. 518'-8"



SOUTH ELEVATION

TOP OF FOOTING ELEV. 494

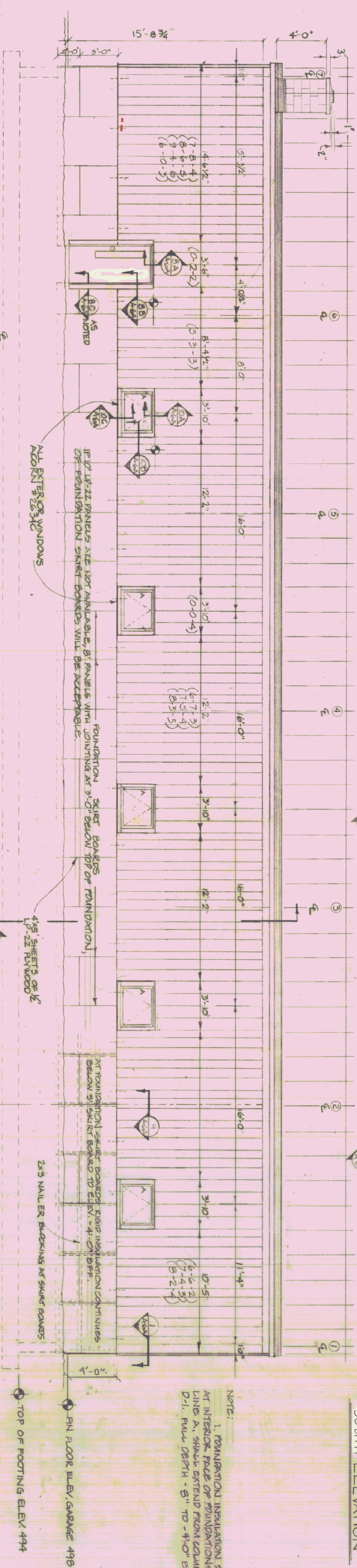
FIN FLOOR ELEV. GARAGE 498

FIN FLOOR ELEV. LOFT 505'-3 3/4"

SIDING LAYOUT

(-1/8")

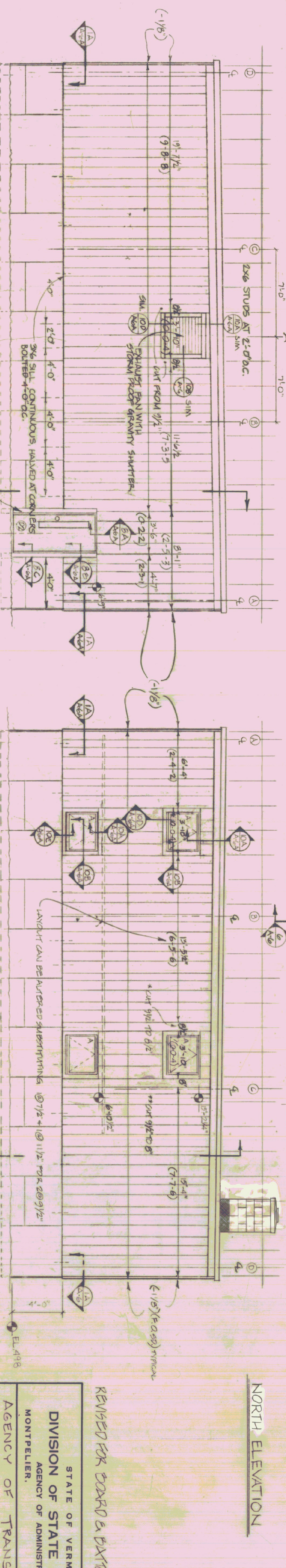
NOTE:
 1. FOUNDATION INSULATION SHOWN DURING AT INTERIOR FACE OF FOUNDATIONS AT COLUMN LINE A. SHALL EXTEND FROM COLUMN LINE (1) TO D.I. FULL DEPTH - 8" TO -4'-0" D.F.F.



NORTH ELEVATION

TOP OF FOOTING ELEV. 494

FIN FLOOR ELEV. GARAGE 498



WEST ELEVATION

EAST ELEVATION

REVISED FOR DOOR & DATION

STATE OF VERMONT
 DIVISION OF STATE BUILDINGS
 AGENCY OF ADMINISTRATION
 MONTPELIER, VERMONT

AGENCY OF TRANSPORTATION
 FIVE BAY GARAGE WITH OFFICE
 WINDSOR, VT. DISTRICT 4
 GARAGE ELEVATIONS

DATE	SCALE	REVISIONS	DWG. NO.
AUG. 1, 1983	1/4" = 1'-0"		A-4
DRAWN BY: PA RASSETTI	APPROVED BY:		6 OF 12