

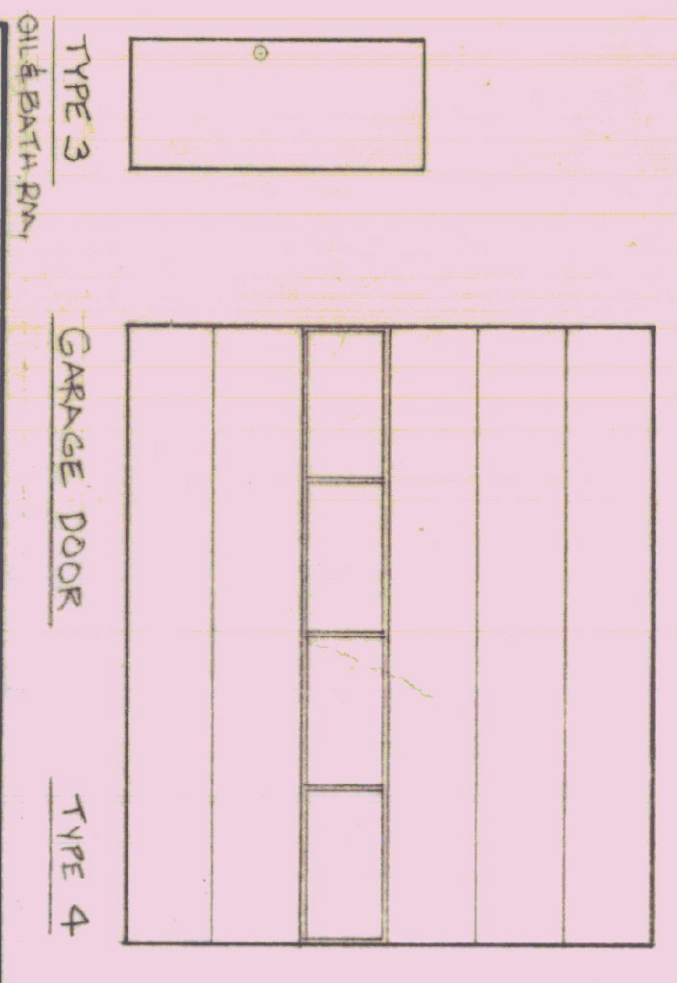
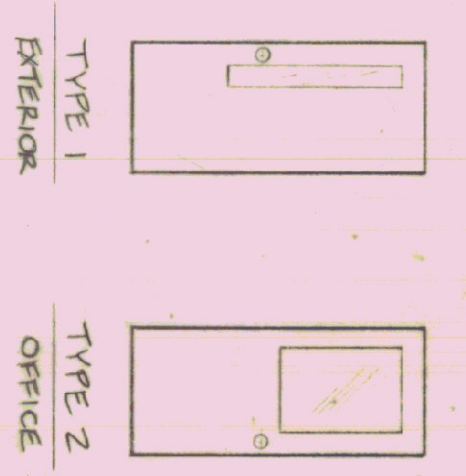


**DOOR SCHEDULE**

NO.	QTY	SIZE	TYPE	FINISH	MATERIAL	HARDWARE SET	REMARKS
D1, D2, D3	3	3'-0" x 7'-0"	1	C	INSULATED METAL	D1-D3-1	W/ GLASS WEATHERSTOP & SWEEP - THERMAL BREAK FRAME
D4	1	2'-8" x 6'-8"	2	C	HOLLOW METAL	2	
D5	1	"	3	B	"	4	
D6	1	"	3	C	"	3	
D7-11	5	14'-0" W x 12'-0" H	4	C	INSULATED WOOD	-	OVERHEAD DOOR SERIES 724 W/ LEVANT WINDOWS & FULL LOCK ROD

**WINDOW SCHEDULE**

NO.	QTY	TYPE	FRAME MATERIAL	ROUGH OPENING	REMARKS
A	10	AWNING	METAL	3'-6 1/2" W x 2'-6 1/2" H	ADORN BLDG. COMPONENTS # 2634C
B	1	FIXED	METAL	3'-4" W x 3'-4" H	HOLLOW METAL SPEC 08100



STATE OF VERMONT  
 DIVISION OF STATE BUILDINGS  
 AGENCY OF ADMINISTRATION  
 MONTPELIER, VERMONT

AGENCY OF TRANSPORTATION  
 FIVE BAY GARAGE WITH OFFICE  
 WINDSOR, VT DISTRICT 4  
 FLOOR PLANS, 1/4" SECTION, & DOOR & WINDOW SCHEDULES

DATE: A/V/1/1985  
 DRAWN BY: AS NOTED  
 APPROVED BY: ST. CESTRUM

SCALE: AS NOTED  
 REVISIONS:  
 DWG. NO. A-5  
 5 OF 12