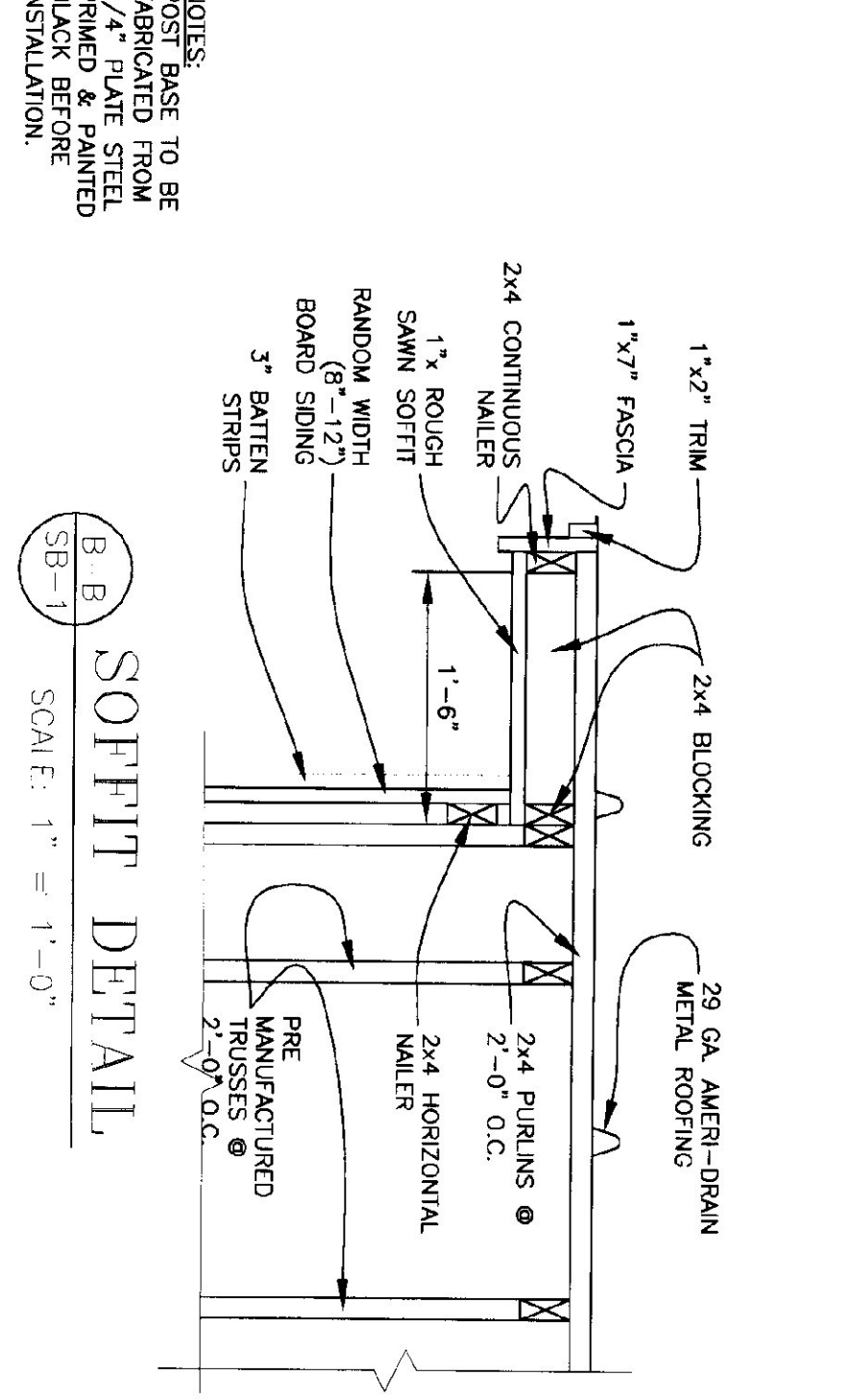
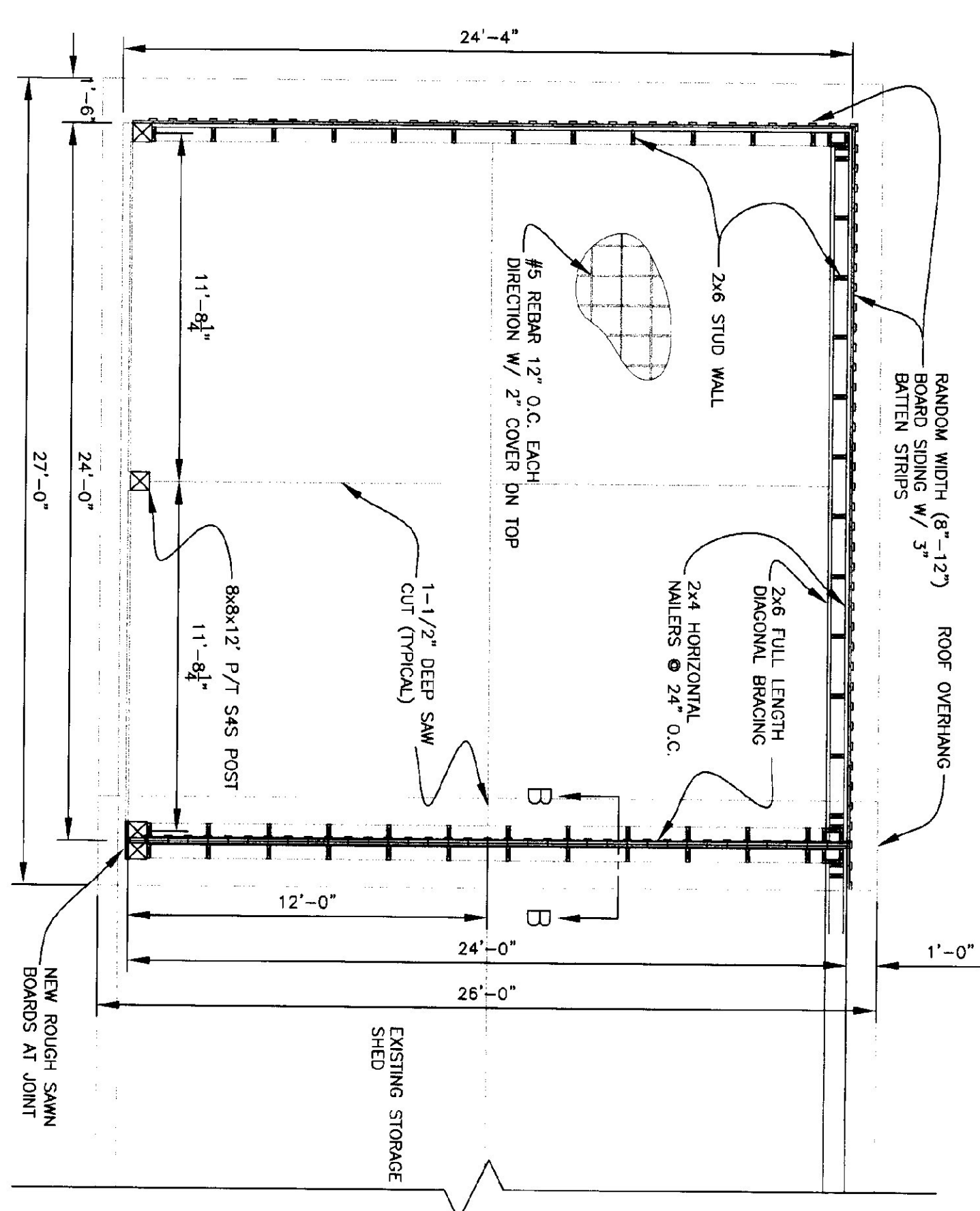


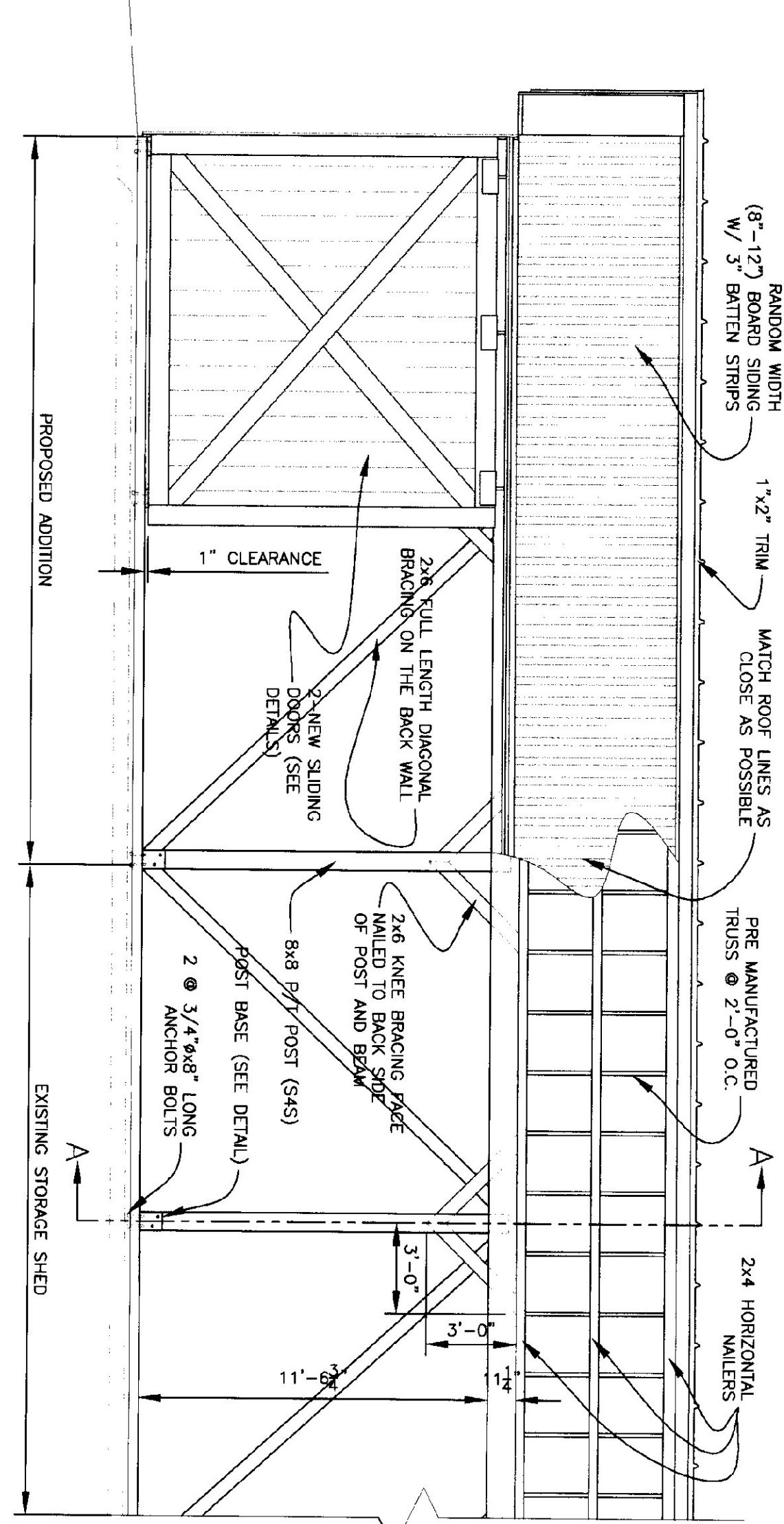
POST BASE DETAIL
SCALE: 3\"/>



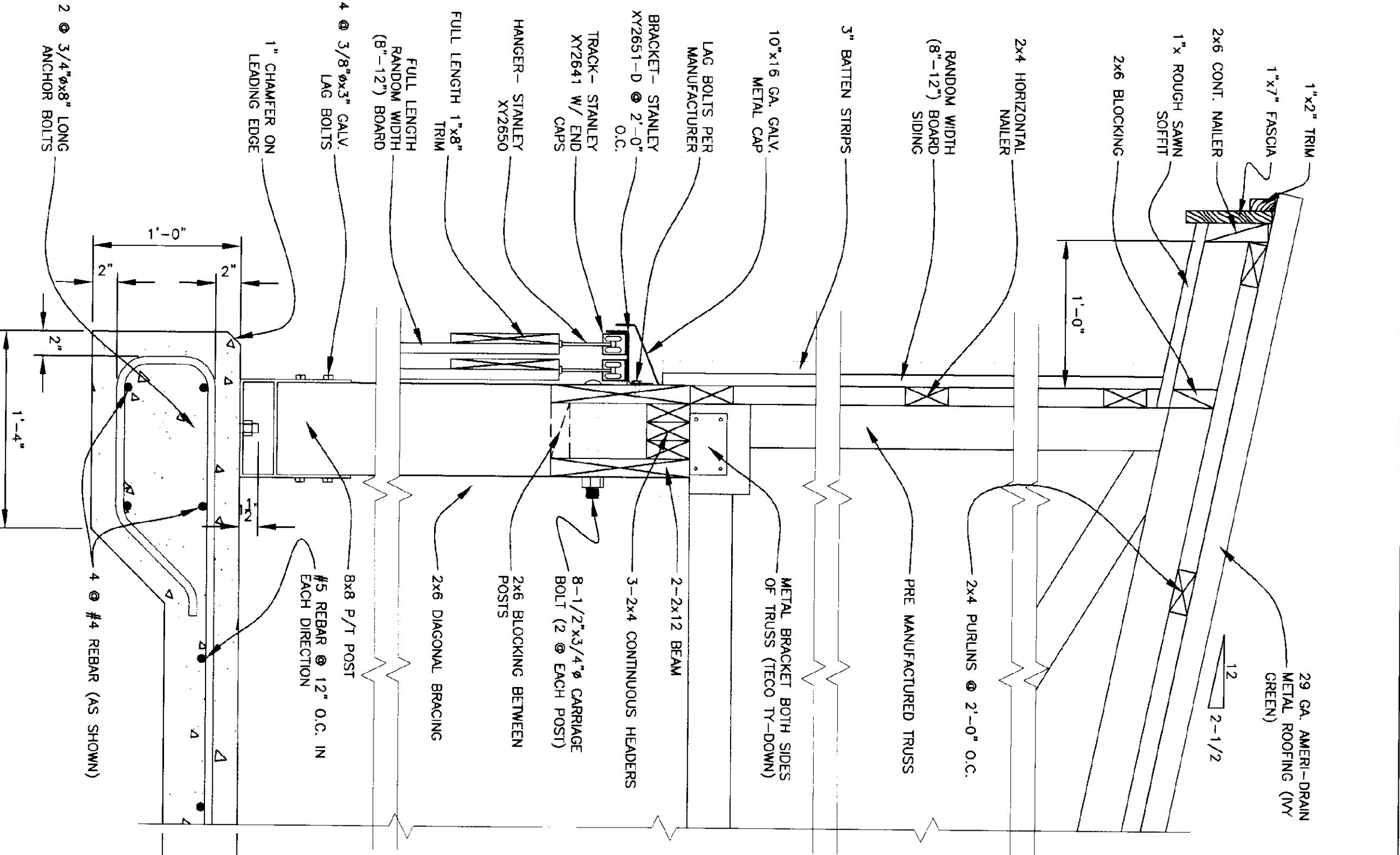
SOFFIT DETAIL
SCALE: 1\"/>



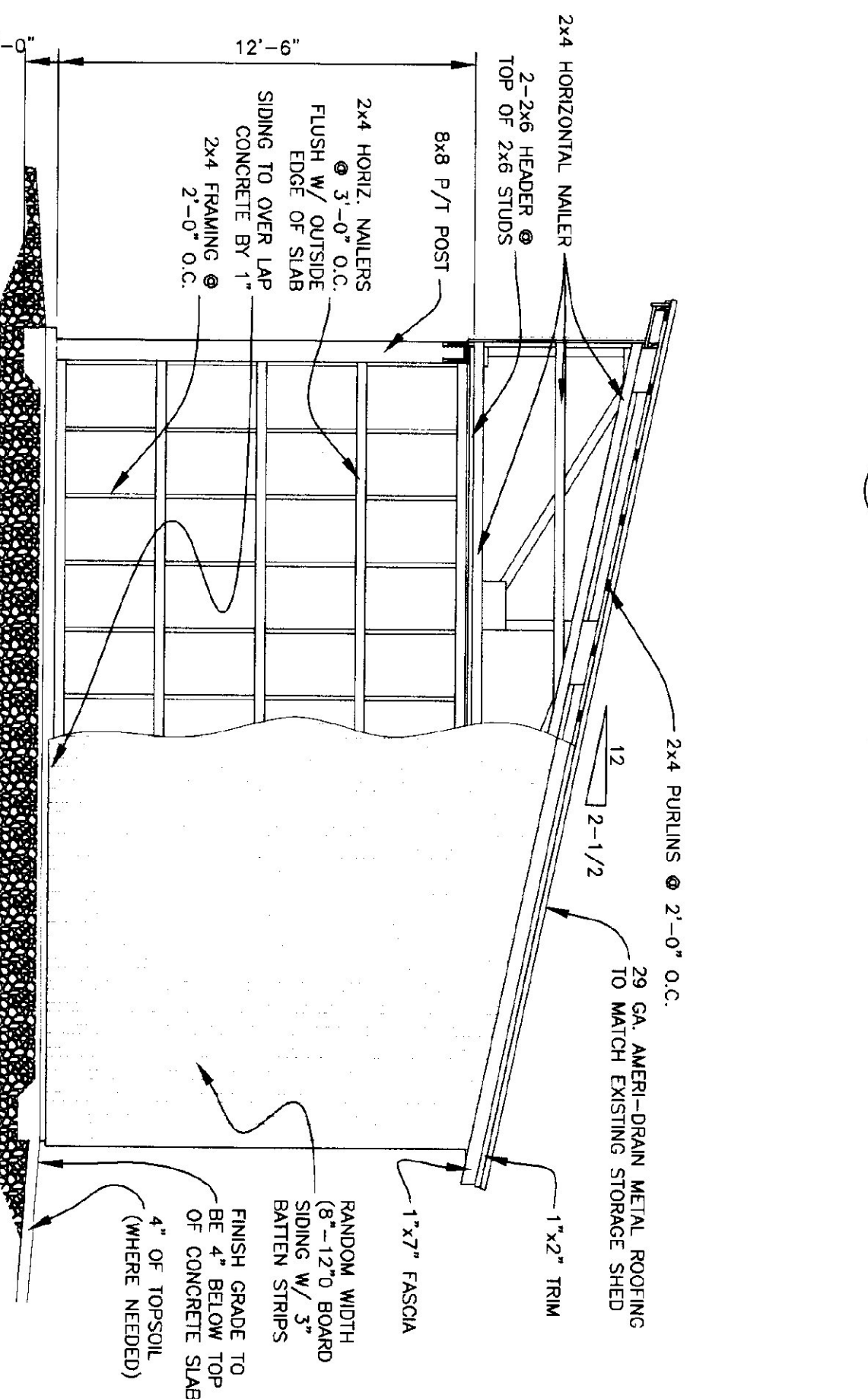
SHED PLAN
SCALE: 1/2\"/>



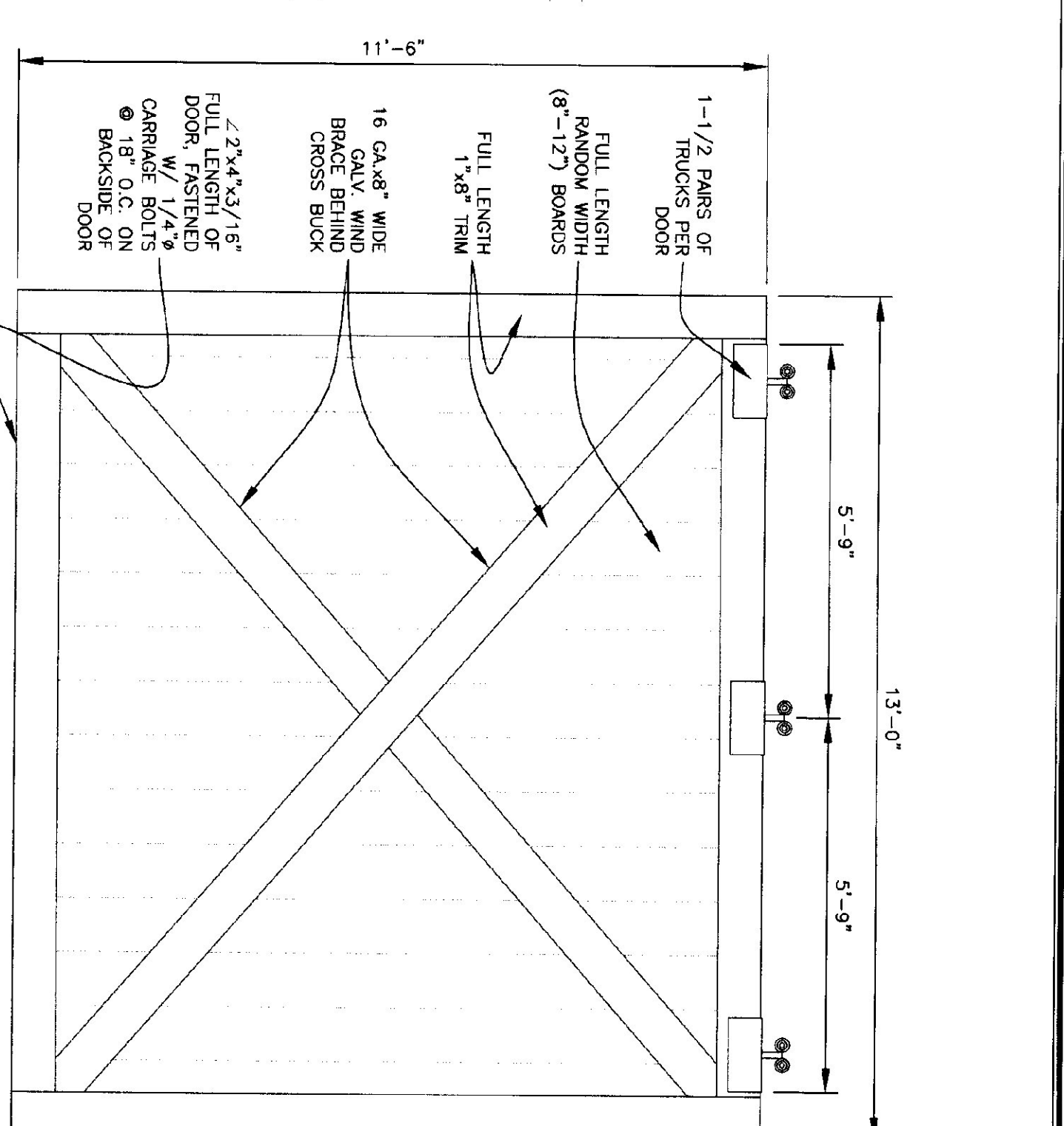
FRONT ELEVATION
SCALE: 1/4\"/>



SECTION A-A
SCALE: 1-1/2\"/>



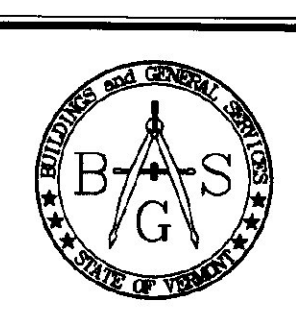
SIDE ELEVATION
SCALE: 1/4\"/>



DOOR DETAIL
SCALE: 1/2\"/>

GENERAL NOTES

- TRUSS NOTES**
 - TRUSS MANUFACTURER TO PROVIDE DEPT. OF STATE BUILDINGS ENGINEER A SET OF ENGINEERED & STAMPED DRAWINGS FOR APPROVAL PRIOR TO TRUSS MANUFACTURE.
 - TRUSS MANUFACTURER TO PROVIDE THE CONTRACTOR WITH ALL NECESSARY INSTRUCTIONS FOR PROPER TRUSS INSTALLATION, ANCHORAGE, BRACING, LIFTING, ECT.
 - TRUSS DESIGN LOADS IN ACCORDANCE WITH THE 1987 B.O.C.A. FOR VERMONT.
- MINIMUM LOADS:**
 - LIVE - PER 1987 B.O.C.A. FOR VERMONT (40 PSF MIN)
 - DEAD - AS CALCULATED FROM TRUSS & ROOF MATERIAL
 - WIND - 25 PSF
 - DIAGONAL WIND BRACING PER TRUSS MANUFACTURE.
- LUMBER NOTES:**
 - FRAMING MEMBERS TO BE KILN DRIED CONSTRUCTION GRADE SPRUCE S4S 15% MOISTURE CONTENT.
 - PLATES & NAILERS IN CONTACT WITH CONCRETE TO BE CCA 0.40 TREATED BOARD & BATTEN SIDING, TRIM, AND SOFFIT MATERIAL TO BE NATIVE ROUGH SAWN WHITE PINE, SPRUCE, EASTERN FIR OR RED PINE. BOARDS TO BE RANDOM WIDTH 8-12\"/>
- FINISH NOTES:**
 - ALL BOARDS & BATTEN TO BE STAINED WITH ONE COAT (ALL SURFACES) PRIOR TO INSTALLATION. AFTER INSTALLATION EXTERIOR SIDING TO RECEIVE ONE ADDITIONAL COAT OF STAIN, APPLY (1) COAT OF STAIN TO EXISTING SHED.
 - ALL FASTENERS TO BE GALVANIZED AND SHALL BE APPROPRIATELY SIZED.
- CONCRETE NOTES:** PER A.O.T. STANDARD.
 - STRENGTH: 3500 PSI (SEE SECTION A-A FOR REBAR DETAIL)
 - FINISH: FLOATED
 - CURING METHOD: PER TABLE 901.17A
- GENERAL NOTES:**
 - EXISTING BUILDING TO BE TIGHTENED UP WITH FASTENERS WHERE NEEDED. REPLACE ROTTED OR MISSING BOARDS TO MATCH EXISTING. EXISTING SHED TO RECEIVE (1) COAT OF STAIN.



STATE OF VERMONT
Department of Buildings
and General Services
Agency of Administration
Montpelier, Vermont

AGENCY OF TRANSPORTATION
WINDSOR HIGHWAY GARAGE
24x24' STORAGE SHED

REVISIONS

SCALE:	AS NOTED
DATE:	MAY 2002
DRAWN BY:	K.CHISHOLM
APPR. BY:	BARRY

A.O.T.
HIGHWAY GARAGE
24x24'
STORAGE SHED
WINDSOR