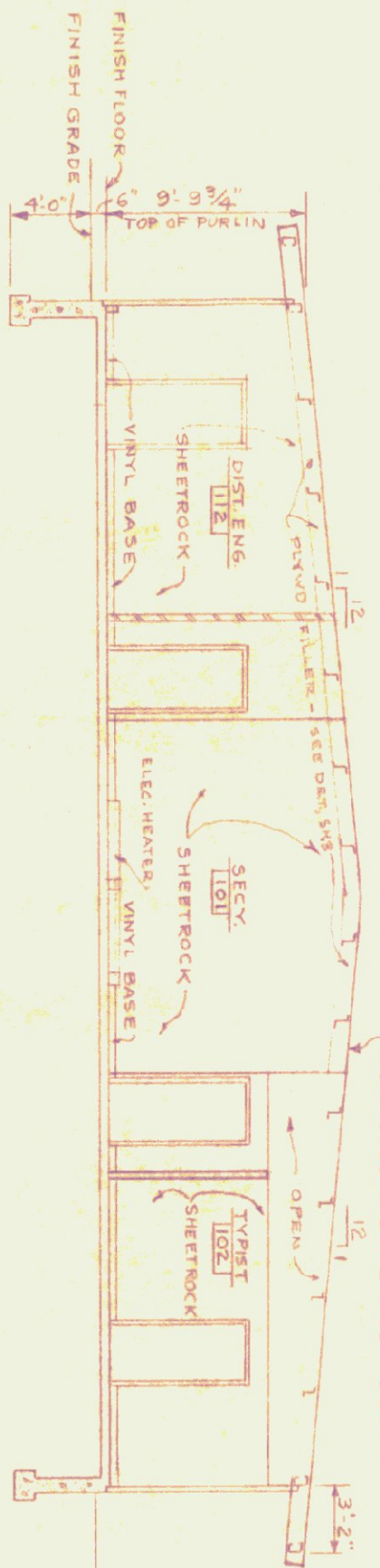
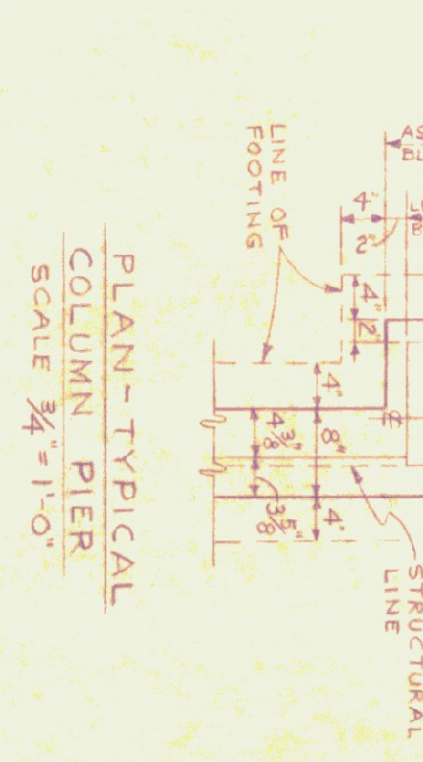


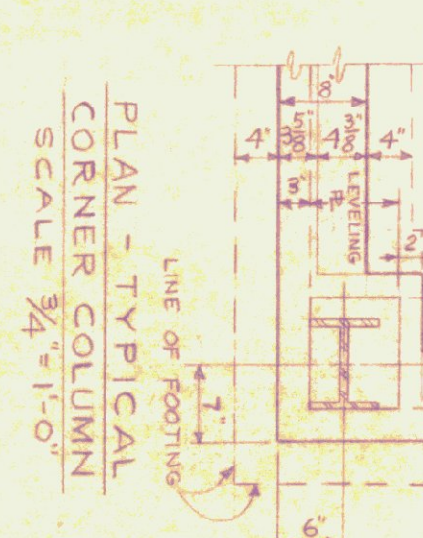
SOUTH ELEVATION
SCALE $\frac{1}{8} = 1'-0"$



SECTION Z-Z
SCALE $\frac{1}{8} = 1'-0"$



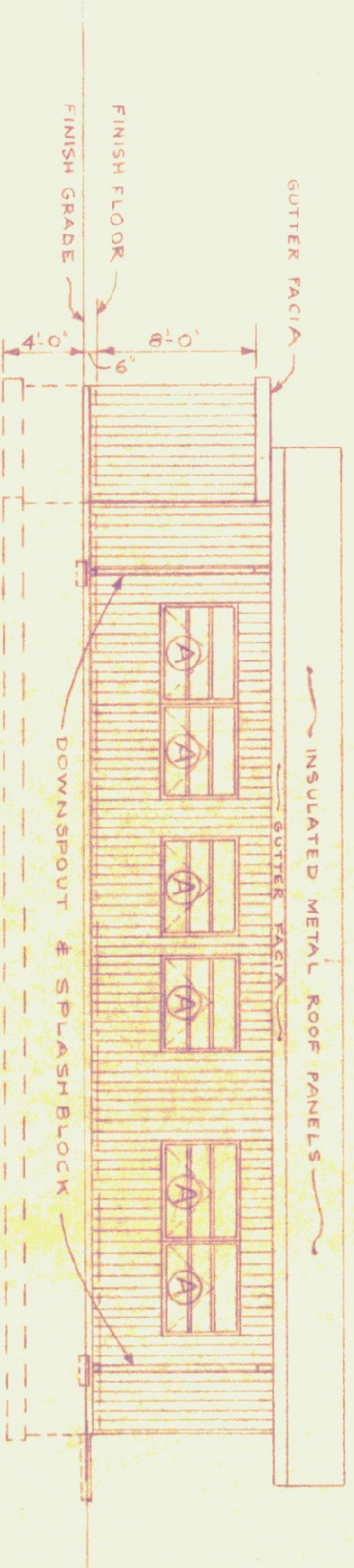
PLAN-TYPICAL COLUMN PIER
SCALE $\frac{3}{4} = 1'-0"$



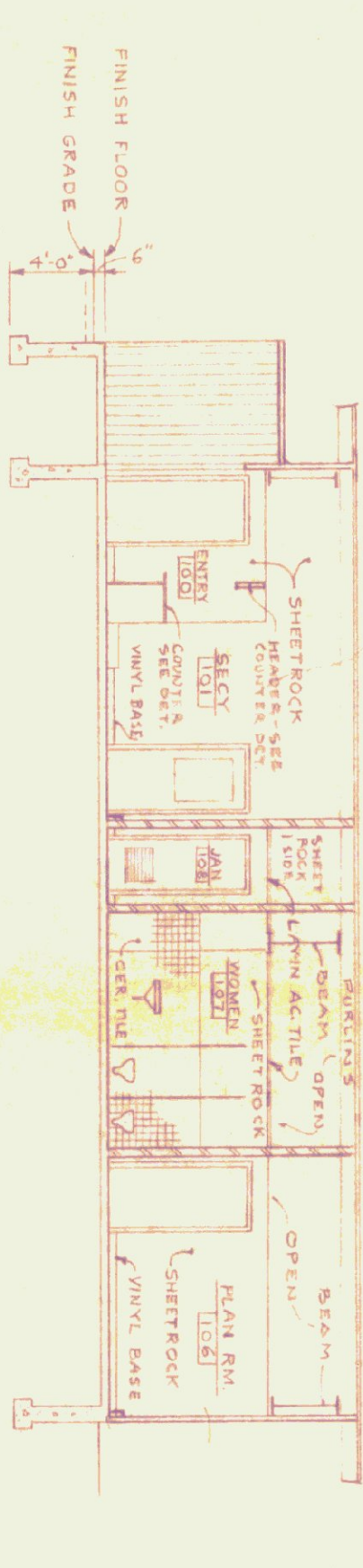
PLAN-TYPICAL CORNER COLUMN
SCALE $\frac{3}{4} = 1'-0"$



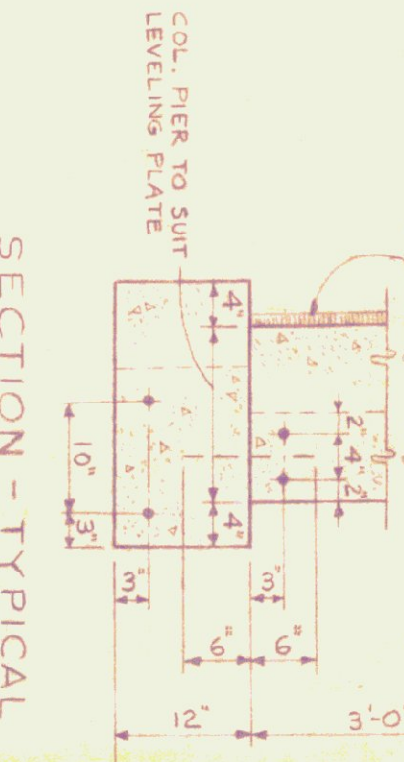
SECTION-TYPICAL FOUNDATION WALL
SCALE $\frac{3}{4} = 1'-0"$



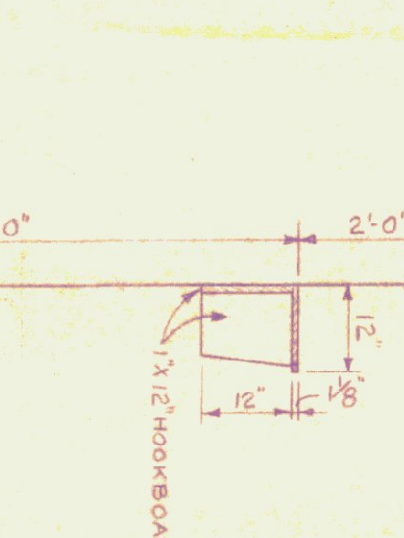
EAST ELEVATION
SCALE $\frac{1}{8} = 1'-0"$



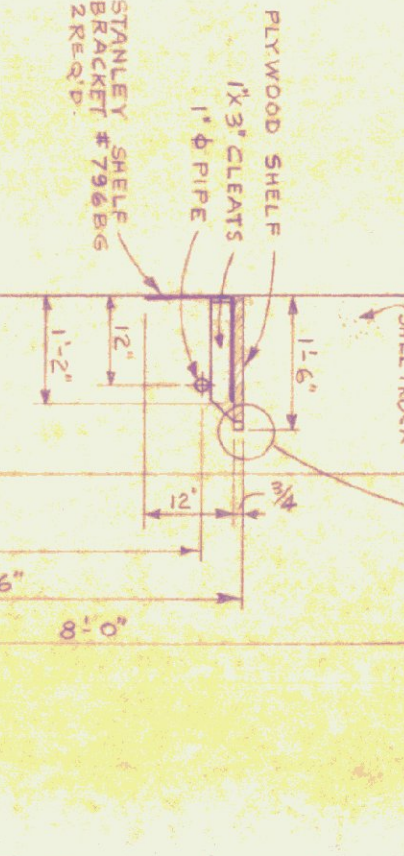
SECTION Y-Y
SCALE $\frac{1}{8} = 1'-0"$



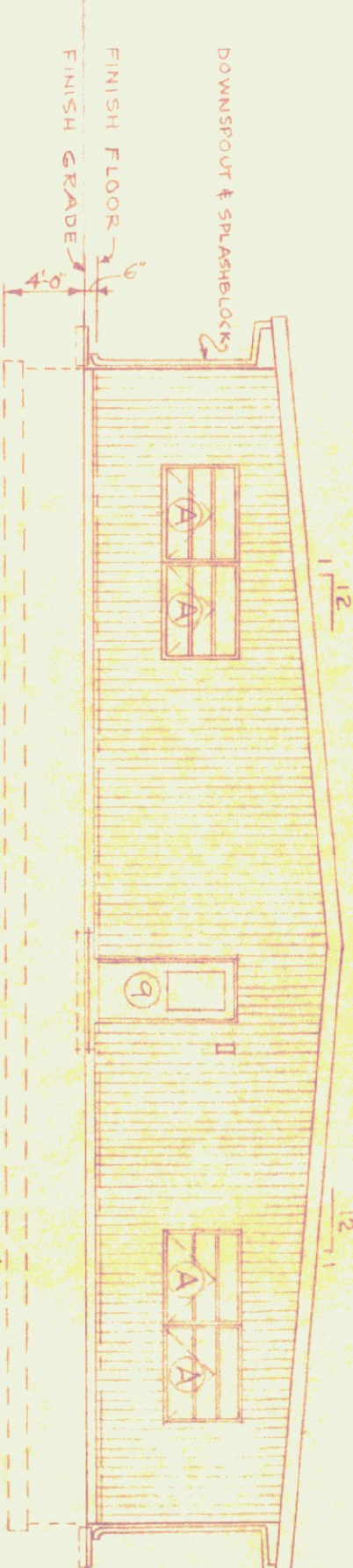
SECTION-TYPICAL COLUMN PIERS
SCALE $\frac{3}{4} = 1'-0"$



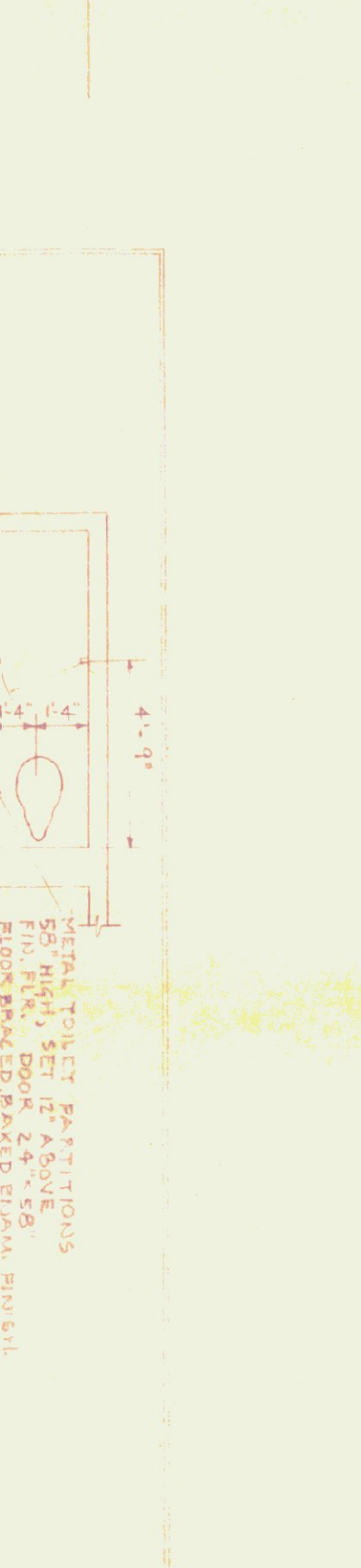
JANITOR SHELF DETAIL
SCALE $\frac{1}{2} = 1'-0"$



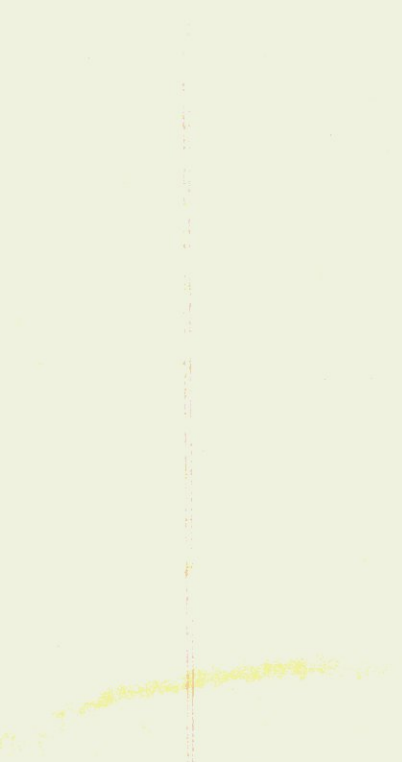
COAT ROOM SHELF DETAIL
SCALE $\frac{1}{2} = 1'-0"$



NORTH ELEVATION
SCALE $\frac{1}{8} = 1'-0"$



PLAN



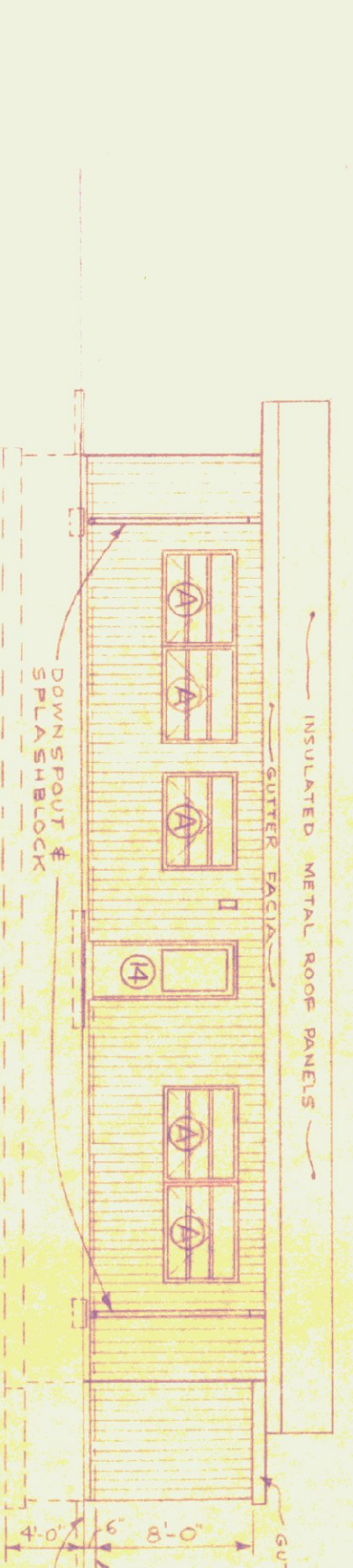
WEST WALL



NORTH WALL



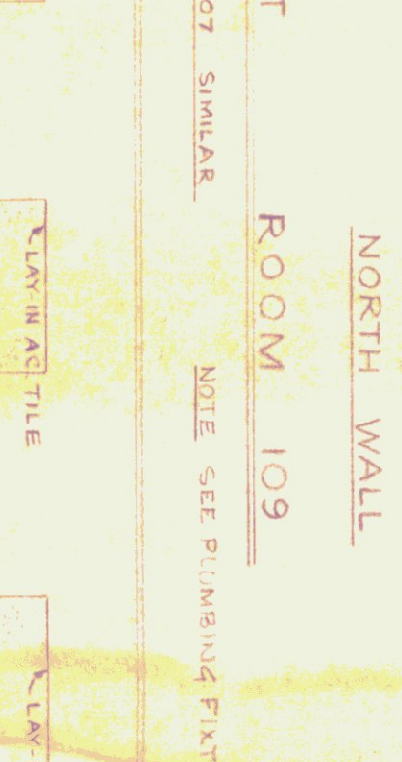
EAST WALL



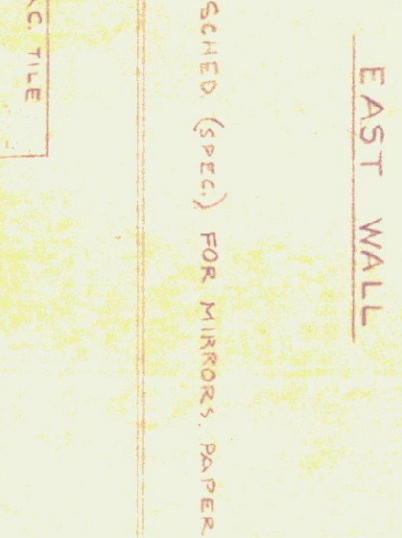
WEST ELEVATION
SCALE $\frac{1}{8} = 1'-0"$



PLAN



WEST WALL



NORTH WALL



EAST WALL

SOUTH WALL



STATE OF VERMONT
OFFICE BUILDING
FOR
STATE HIGHWAY DEPT.
DATE 10-1-66
5368
ELEVATIONS-SECTIONS
AND DETAILS
RICHARD B. DIAMOND & ASSOC.
ARCHITECTS-ENGINEERS
PLANNING - VERSION 2