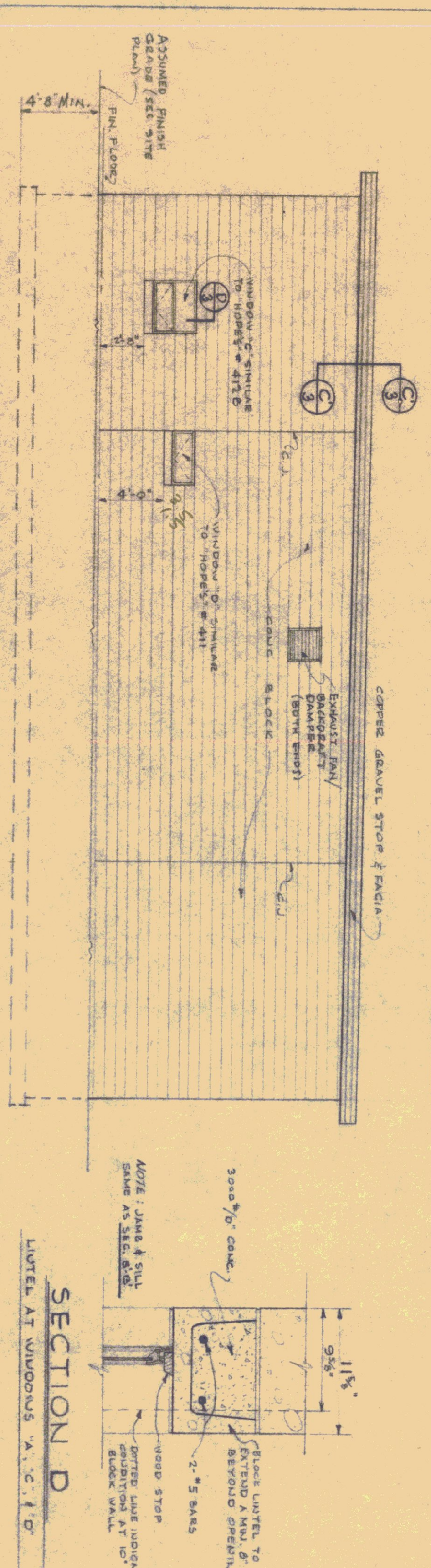


FRONT ELEVATION  
SCALE 3/8" = 1'-0"

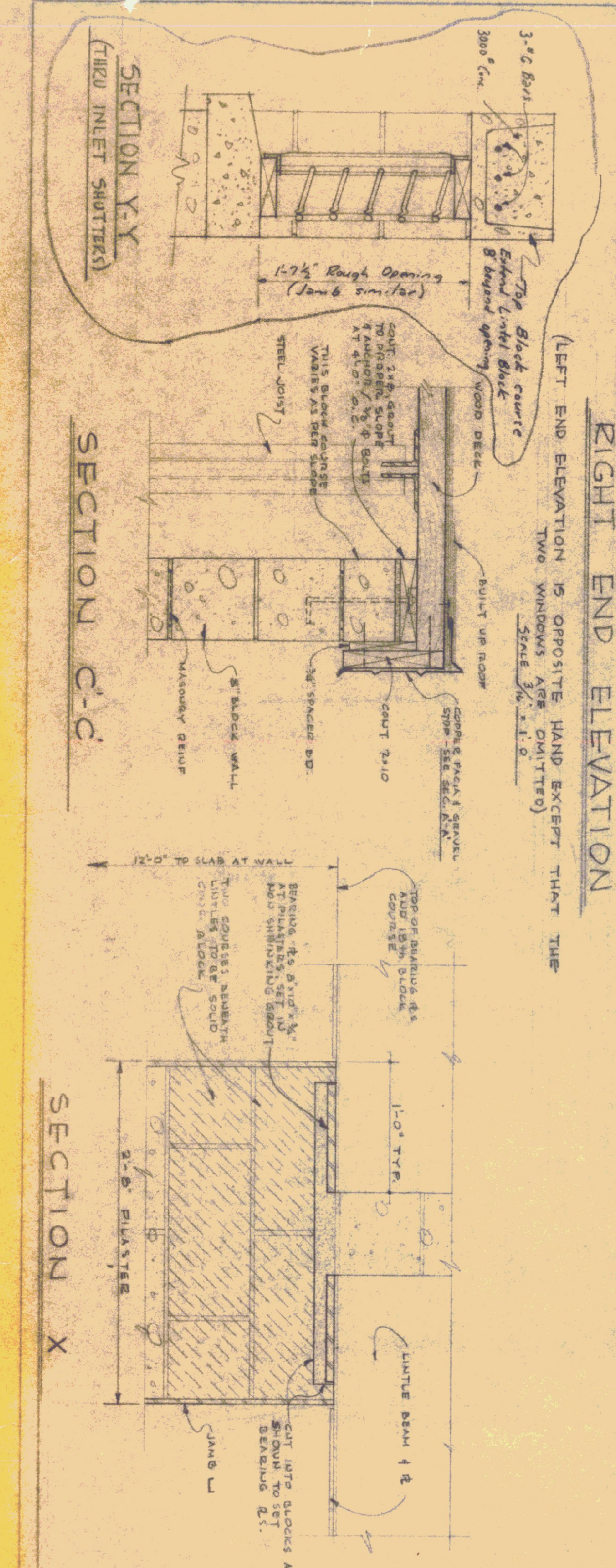
REAR ELEVATION

SECTION X-X  
(THRU FRONT SHUTTERS)



RIGHT END ELEVATION  
(LEFT END ELEVATION IS OPPOSITE HAND EXCEPT THAT THE TWO WINDOWS ARE SWITTED)  
SCALE 3/8" = 1'-0"

SECTION D-D  
LUTEL AT WINDOWS A.C. 1'-0"



SECTION C-C

SECTION A-A

SECTION B-B

NOTE:  
ALL MATERIALS & CONSTRUCTION  
SIMILAR TO SEC. A-A

DATE	REV	DESCRIPTION	BY
MAY 3, 1964	1	Added 16" x 16" x 16" Sill for Front & Rear	BY T.R.B.
		Revisions, added Section F-X	04-2-1964

STANDARD GARAGE BUILDING  
FOR  
VERMONT DEPARTMENT OF HIGHWAYS

STATE BUILDINGS DIVISION  
DEPT. OF ADMINISTRATION  
VERMONT

DRAWN BY MONTPELLIER, VERMONT  
3