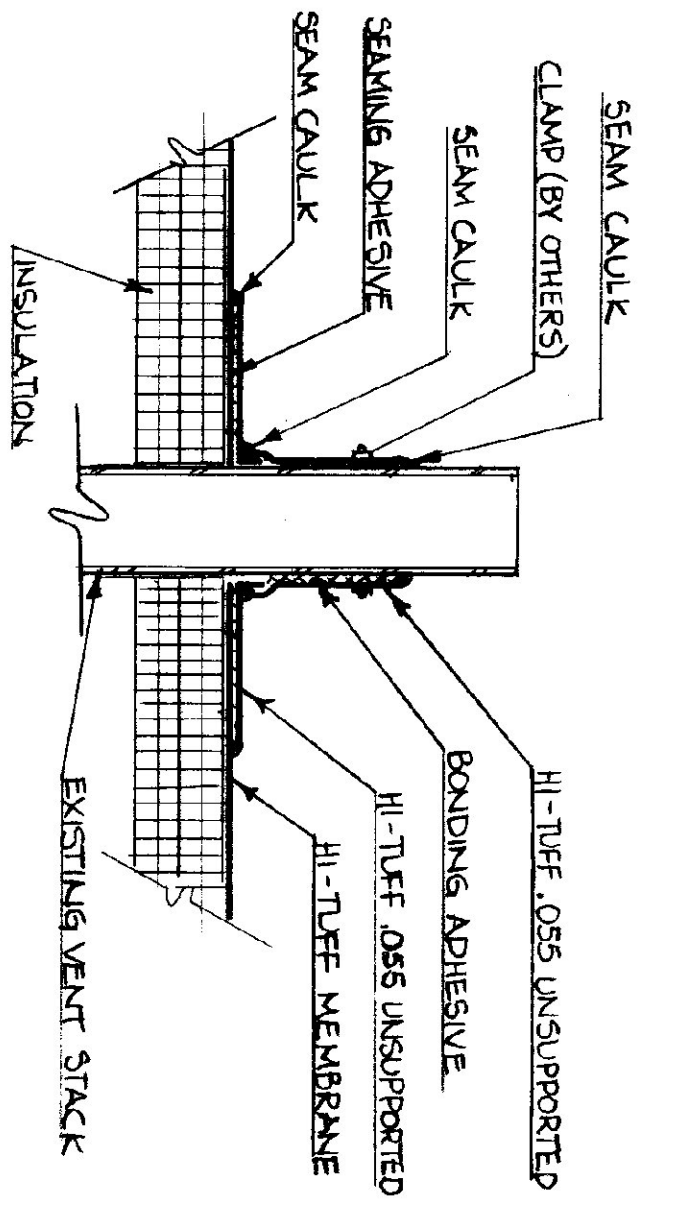
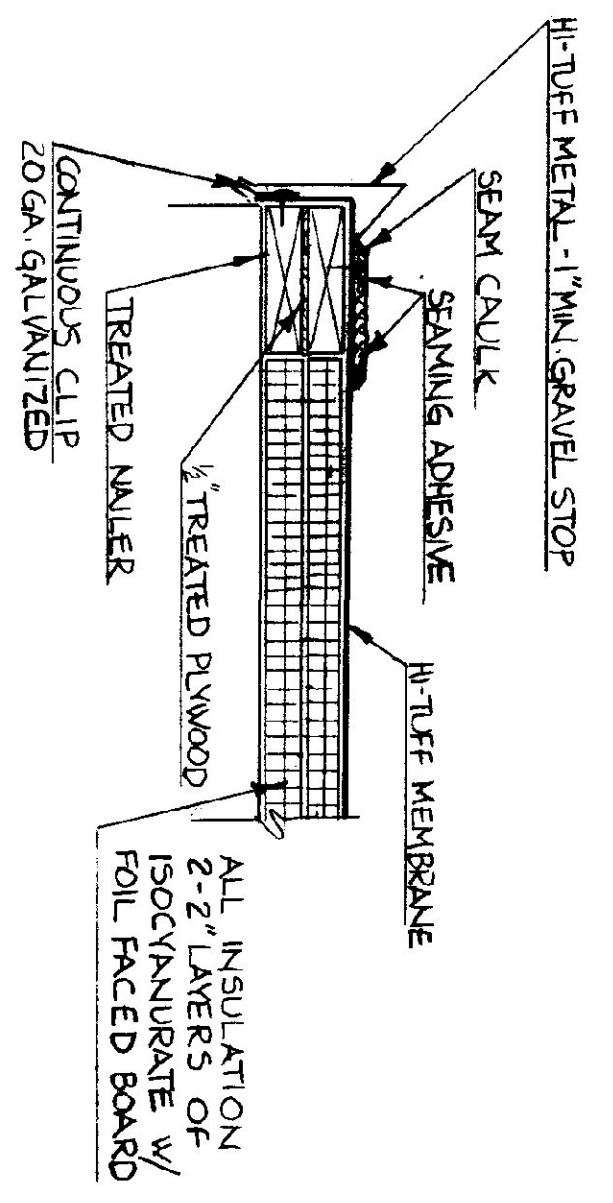


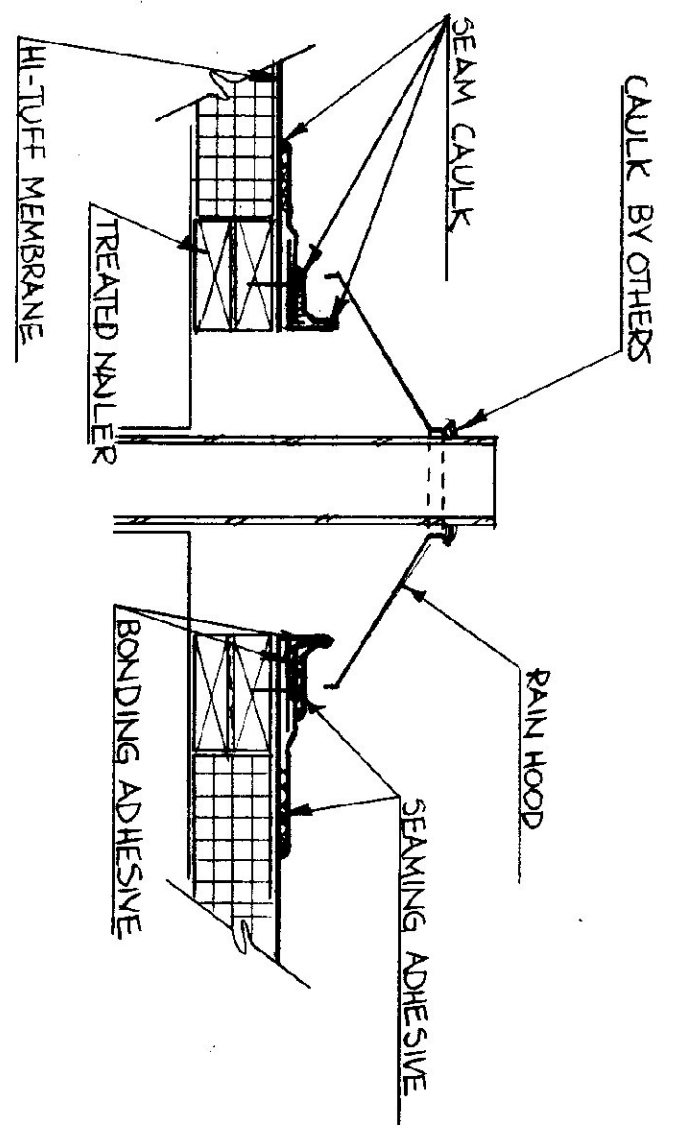
NORTH



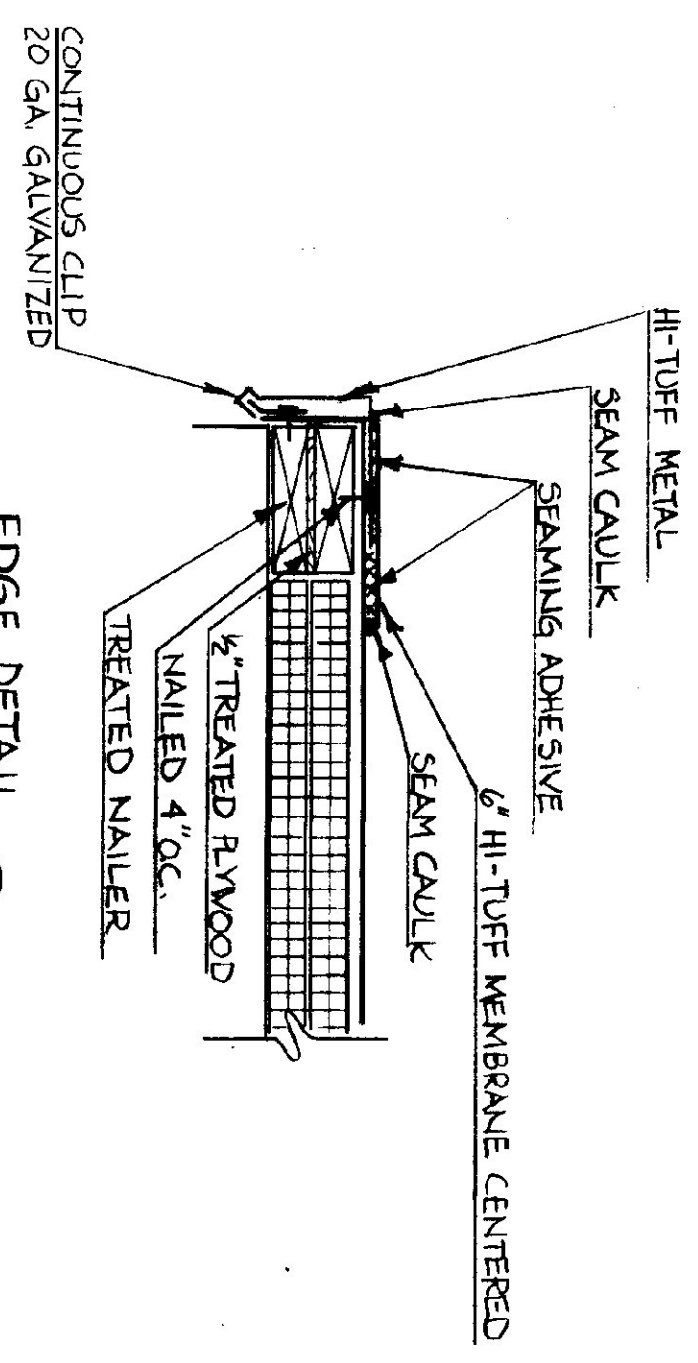
VENT STACK DETAIL (A)



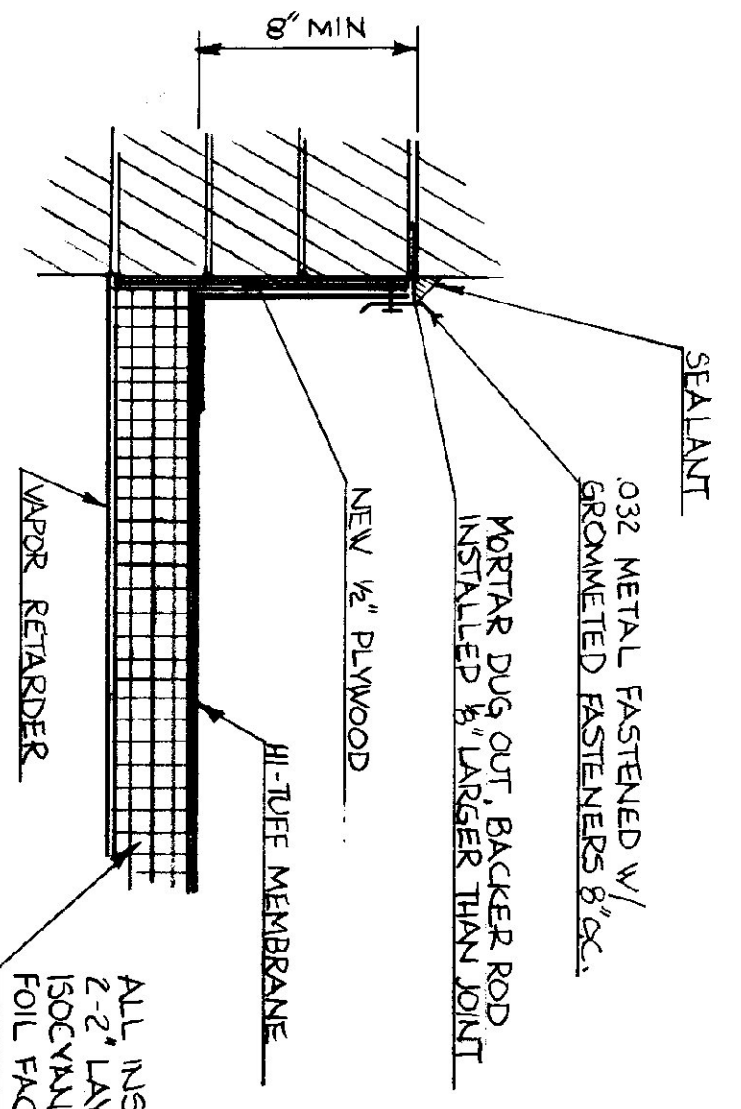
EDGE DETAIL (B)



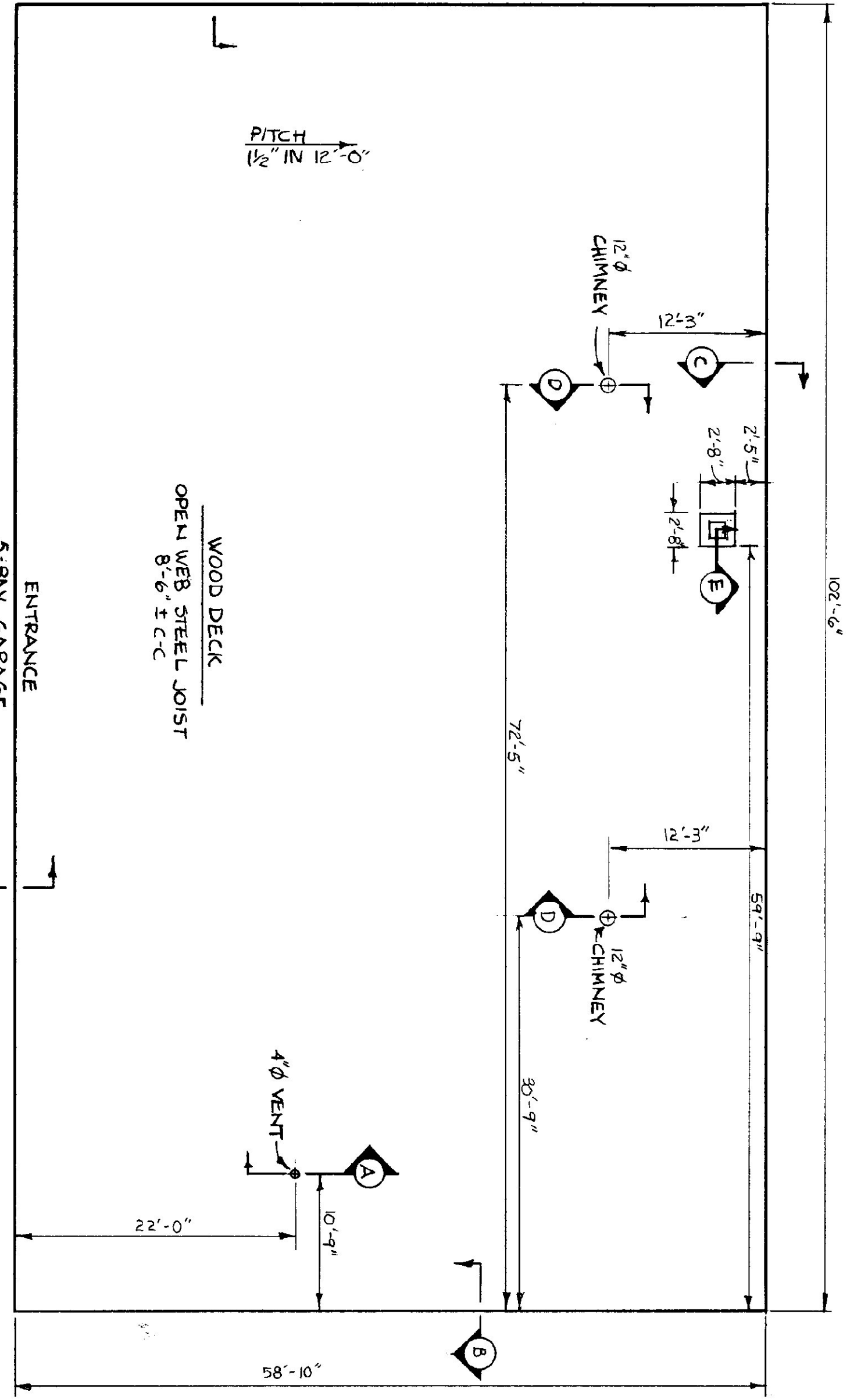
CHIMNEY DETAIL (D)



EDGE DETAIL (C)



CHIMNEY FLASHING DETAIL (E)



ROOF PLAN  
1/8" = 1'-0"

STATE OF VERMONT			
DIVISION OF STATE BUILDINGS			
AGENCY OF ADMINISTRATION			
MONTPELIER, VERMONT			
VERMONT AGENCY OF TRANSPORTATION			
WHITE RIVER GARAGE			
RE-ROOFING PROJECT			
DATE	NOV. 4, 1982	REVISIONS	DWG. NO.
DRAWN BY:	BARRETT	APPROVED BY:	F. HAY
		1 OF 1	