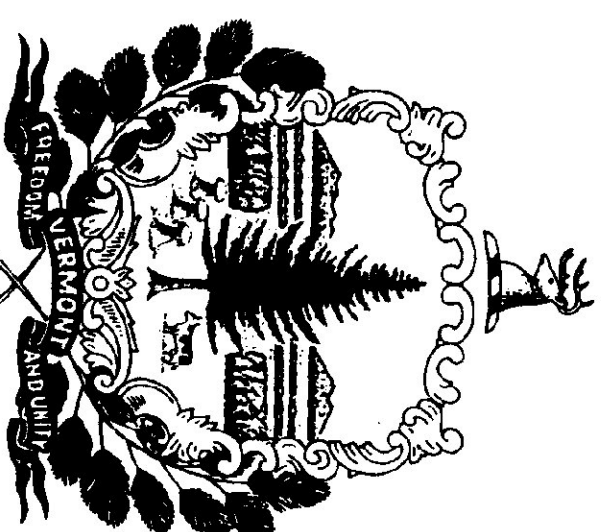


AGENCY OF TRANSPORTATION  
STATE OF VERMONT  
**SALT AND SAND SHEDS**  
WHITE RIVER JCT., VERMONT

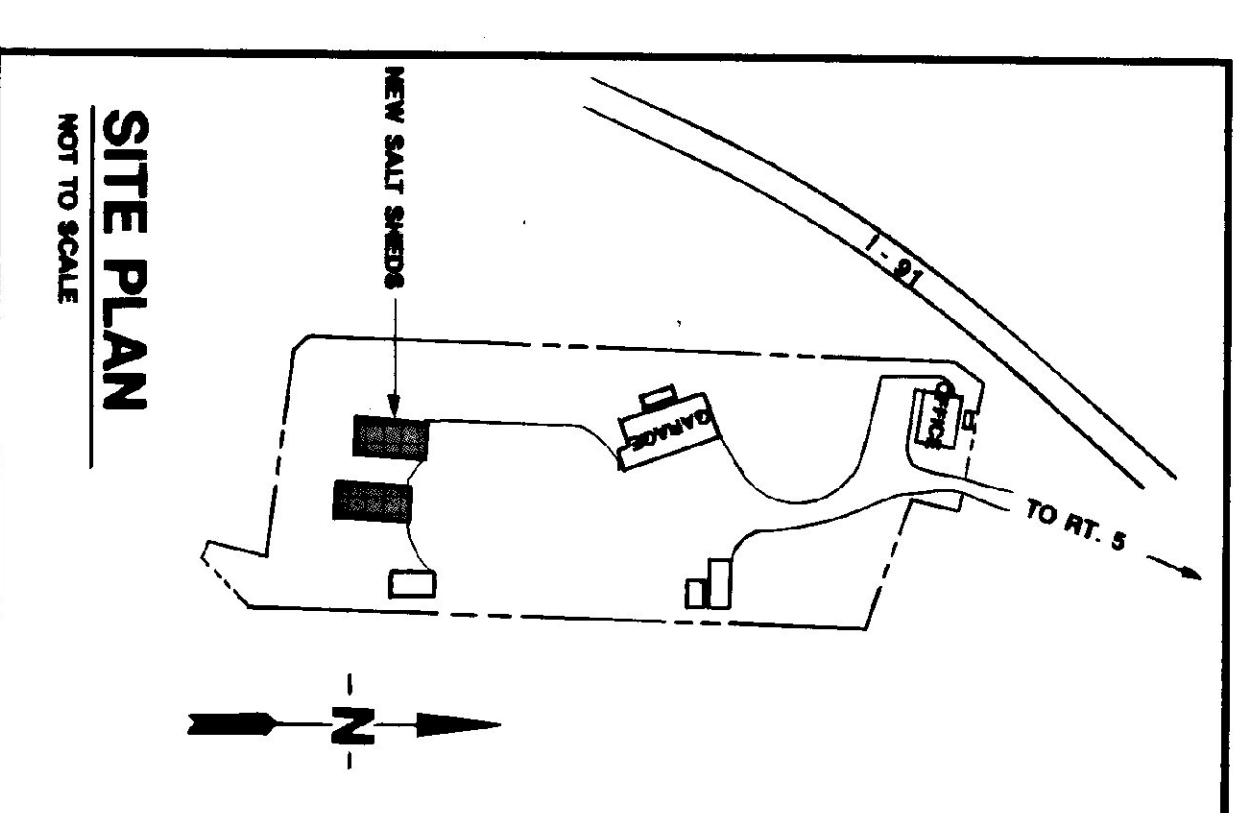
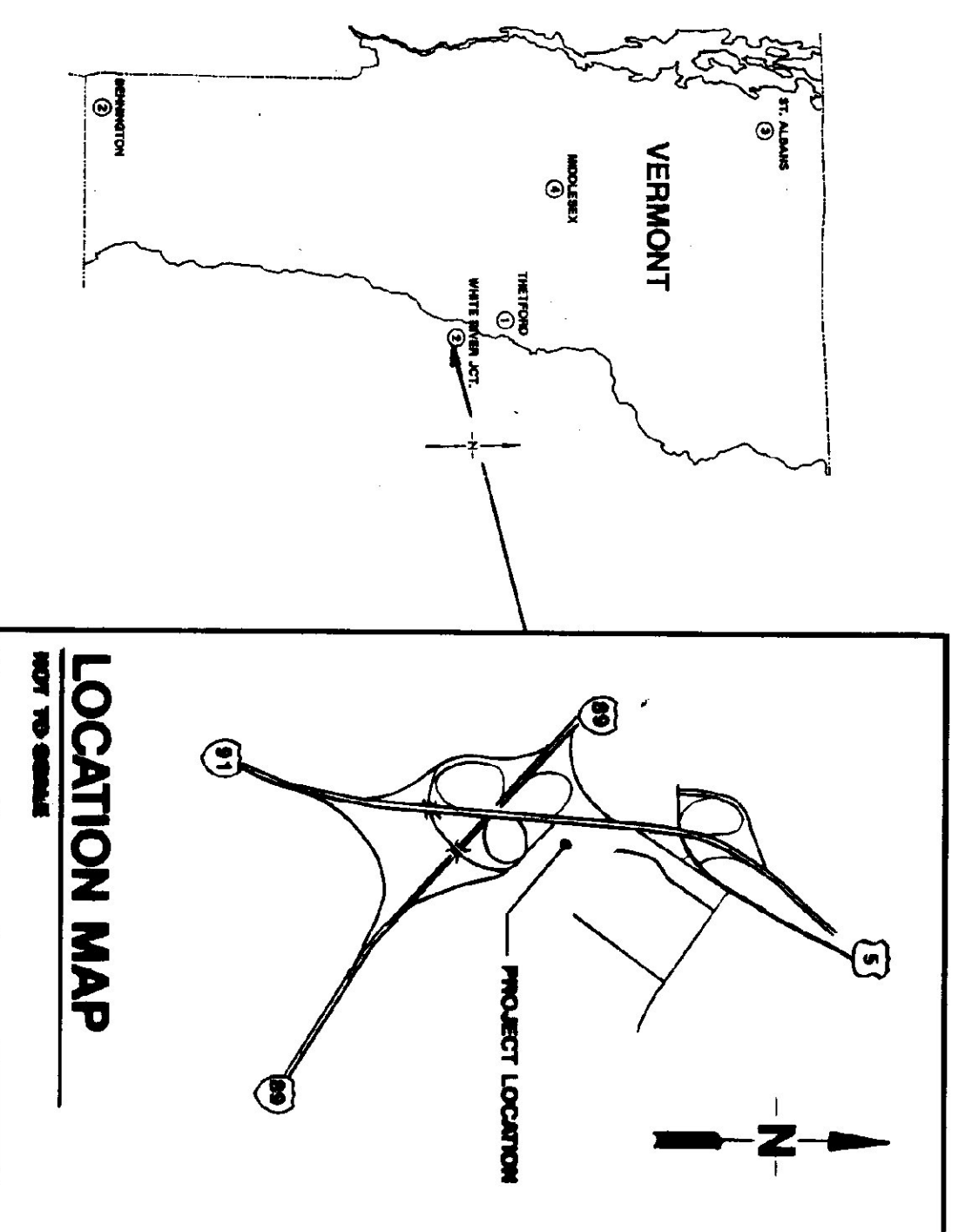
SEPTEMBER 5, 1991

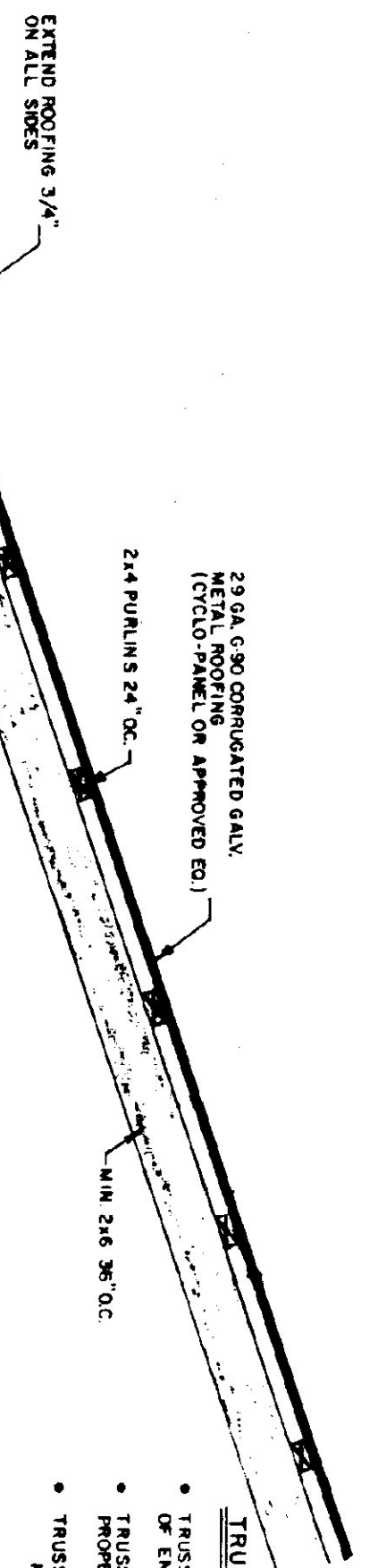
AGENCY OF ADMINISTRATION  
DEPARTMENT OF STATE BUILDINGS  
2 GOVERNOR AIKEN AVENUE  
MONTPELIER, VERMONT 05602  
JOHN J. ZAMPIERI, COMMISSIONER



GOVERNOR HOWARD DEAN

AGENCY OF TRANSPORTATION  
133 STATE STREET  
MONTPELIER, VERMONT 05602  
PATRICK J. GARAHAN, SECRETARY

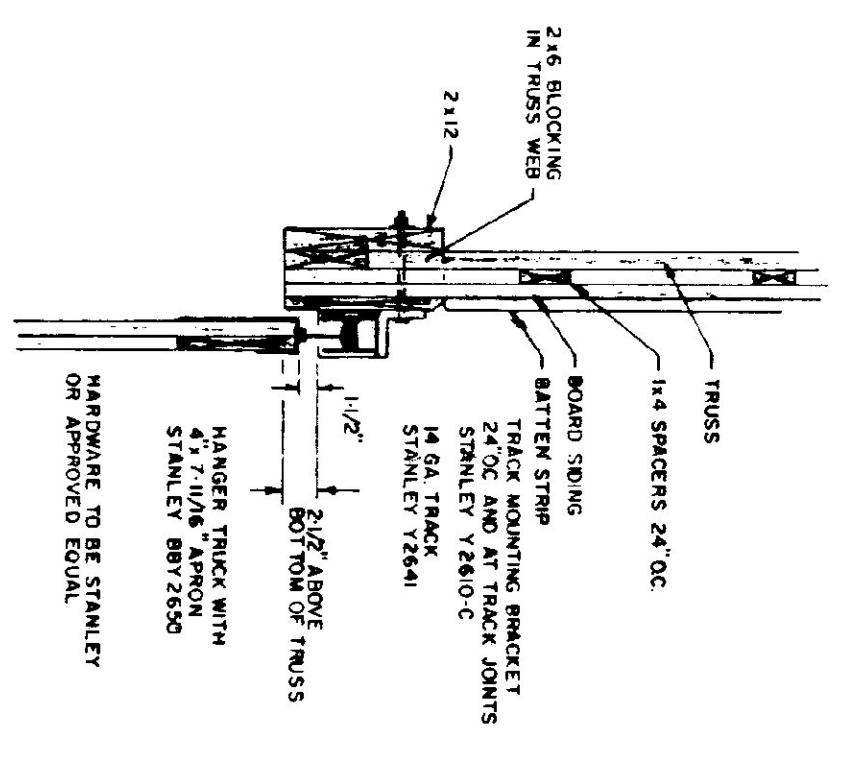




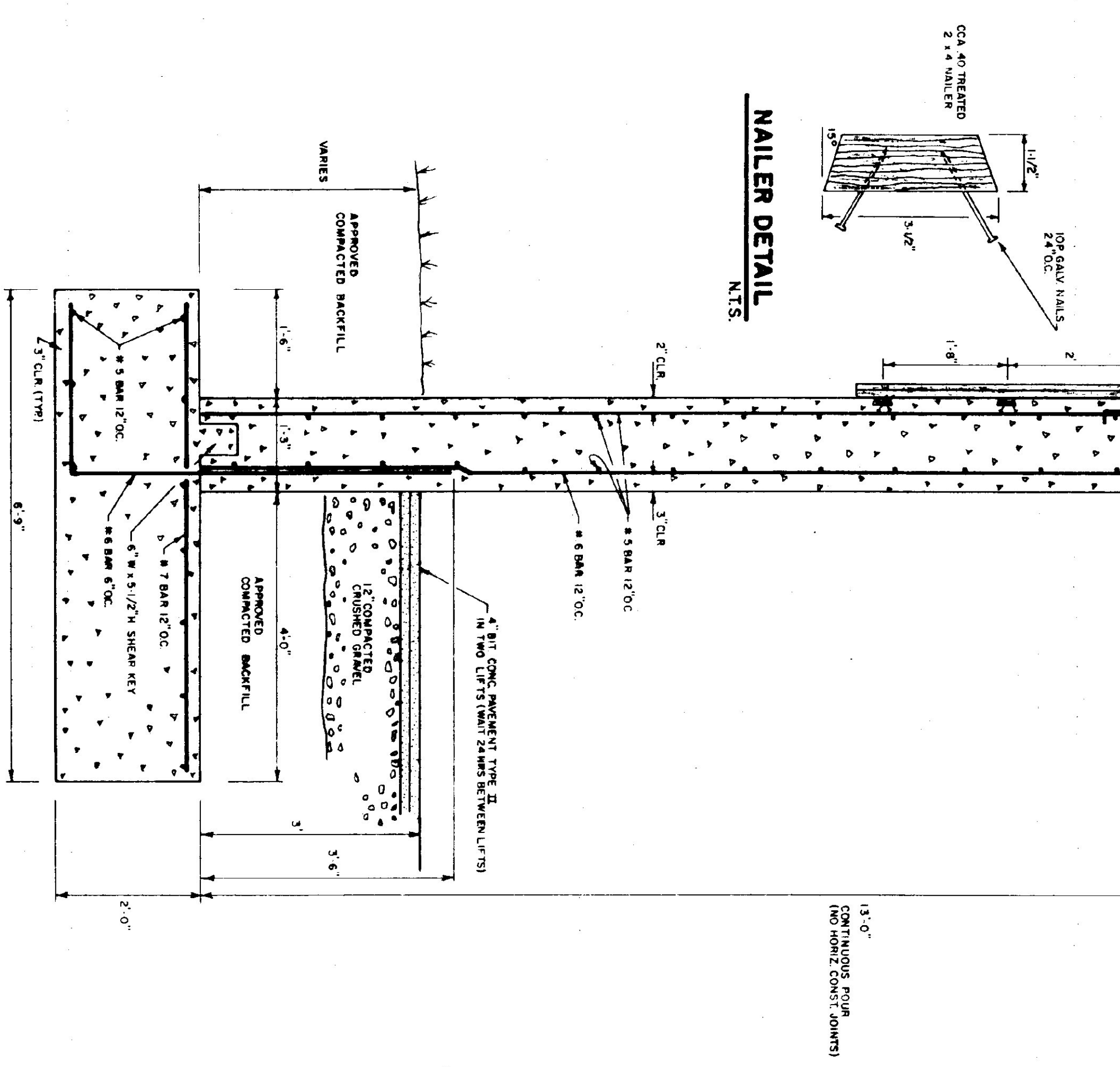
- TRUSS NOTES**
- TRUSS MANUFACTURER TO PROVIDE THE DEPT OF STATE BUILDINGS ENGINEER A SET OF ENGINEERED & STAMPED DRAWINGS FOR APPROVAL PRIOR TO TRUSS MANUFACTURE
  - TRUSS MANUFACTURER TO PROVIDE THE CONTRACTOR WITH ALL NECESSARY INSTRUCTIONS FOR PROPER TRUSS INSTALLATION, ANCHORAGE, BRACING ETC.
  - TRUSS DESIGN LOADS IN ACCORDANCE WITH THE 1987 SBCA FOR VERMONT
  - LIVE - PER 1987 SBCA FOR V1 (50 PSF MIN)
  - DEAD - AS CALCULATED FROM TRUSS & ROOF MATERIALS
  - WIND - 23 PSF
  - DIAGONAL WIND BRACING REQUIRED

- LUMBER NOTES**
- FRAMING MEMBERS TO BE MILN DRIED CONSTRUCTION GRADE SPECIES 24% 19%
  - PLANT & AID NAILERS IN CONTACT WITH CONCRETE TO BE CCA 40 TREATED
  - BOARD AND BATTEN SIDING TO BE NATIVE WOOD 6\"/>
  - ALL HORIZONTAL JOINTS IN SIDING TO OCCUR ONLY AT 1\"/>
  - ALL HORIZONTAL JOINTS IN SIDING TO BE STAINED WITH AN OIL BASED STAIN
  - AFTER INSTALLATION EXTERIOR SIDING TO RECEIVE ONE ADDITIONAL COAT OF STAIN
  - STAIN TO BE OLIVARIK OIL BASE SEMI TRANSPARENT OXFORD BROWN # 713

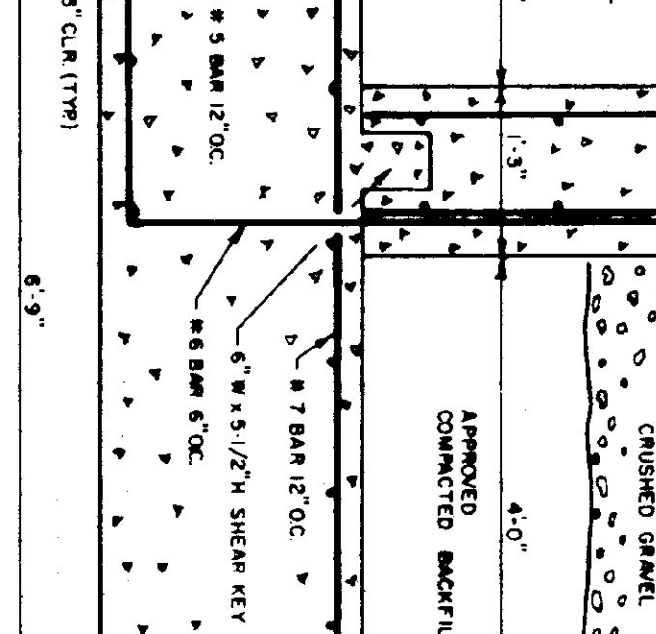
- FINISH NOTES**
- ALL ROOFING AND BATTENS TO BE STAINED WITH AN OIL BASED STAIN
  - AFTER INSTALLATION EXTERIOR SIDING TO RECEIVE ONE ADDITIONAL COAT OF STAIN
  - STAIN TO BE OLIVARIK OIL BASE SEMI TRANSPARENT OXFORD BROWN # 713



**TRACK MOUNT DETAIL**  
N.T.S.

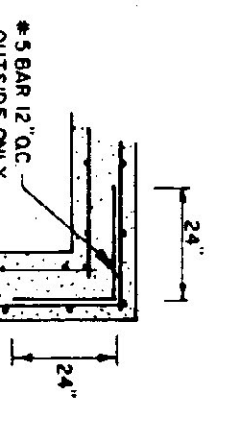


**NAILER DETAIL**  
N.T.S.

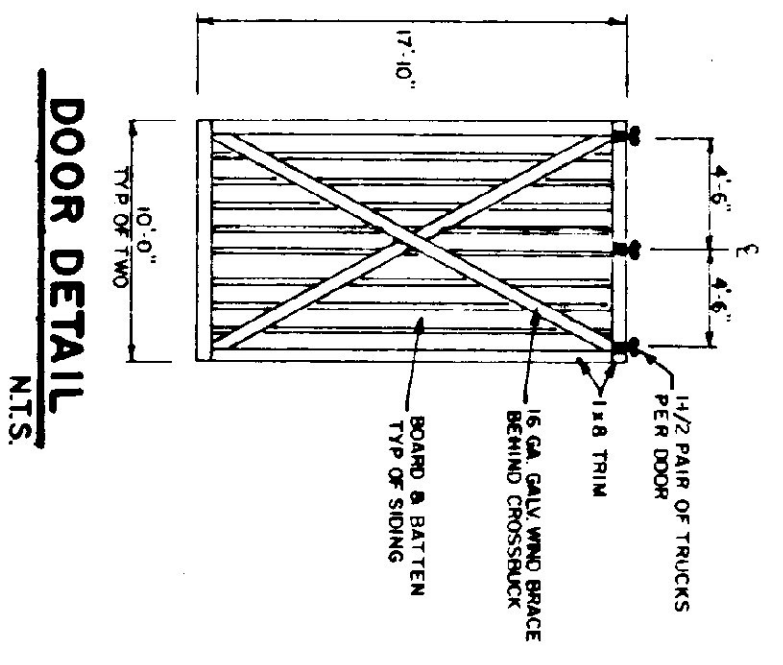


**TYPICAL WALL SECTION**  
3/4\"/>

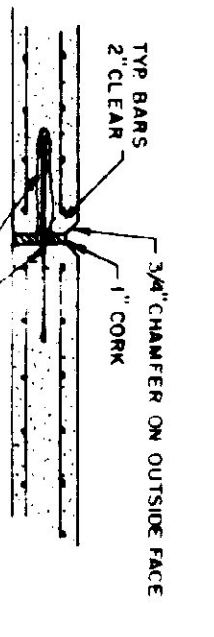
- CONCRETE NOTES**
- ALL CONCRETE TO BE 3500 PSI AT 28 DAYS WITH MAXIMUM SLUMP OF 4"
  - EXPOSED WALLS TO BE DRESS FINISHED
  - 1/2\"/>
  - 3/4\"/>
  - L IRON CAST INTO WALL CORNERS AT DOOR OPENINGS
  - RE BAR TO BE CONTINUOUS THROUGH CONST JOINTS
  - NO HORIZONTAL CONST JOINTS IN WALLS
  - ALL RE BAR TO BE GRADE 60
  - CONSTRUCTION TO TAKE NO METAL WITHIN TOP SURFACE OF CONCRETE
  - RE BAR TO BE STORED ON BLOCKING 4\"/>
  - CONCRETE SUPPLIER TO PROVIDE TEST CYLINDERS FOR TESTING BY OWNER
  - CONCRETE SUPPLIER TO CONDUCT ON SITE AIR TEST



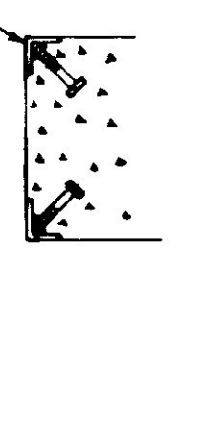
**CORNER DETAIL**  
N.T.S.



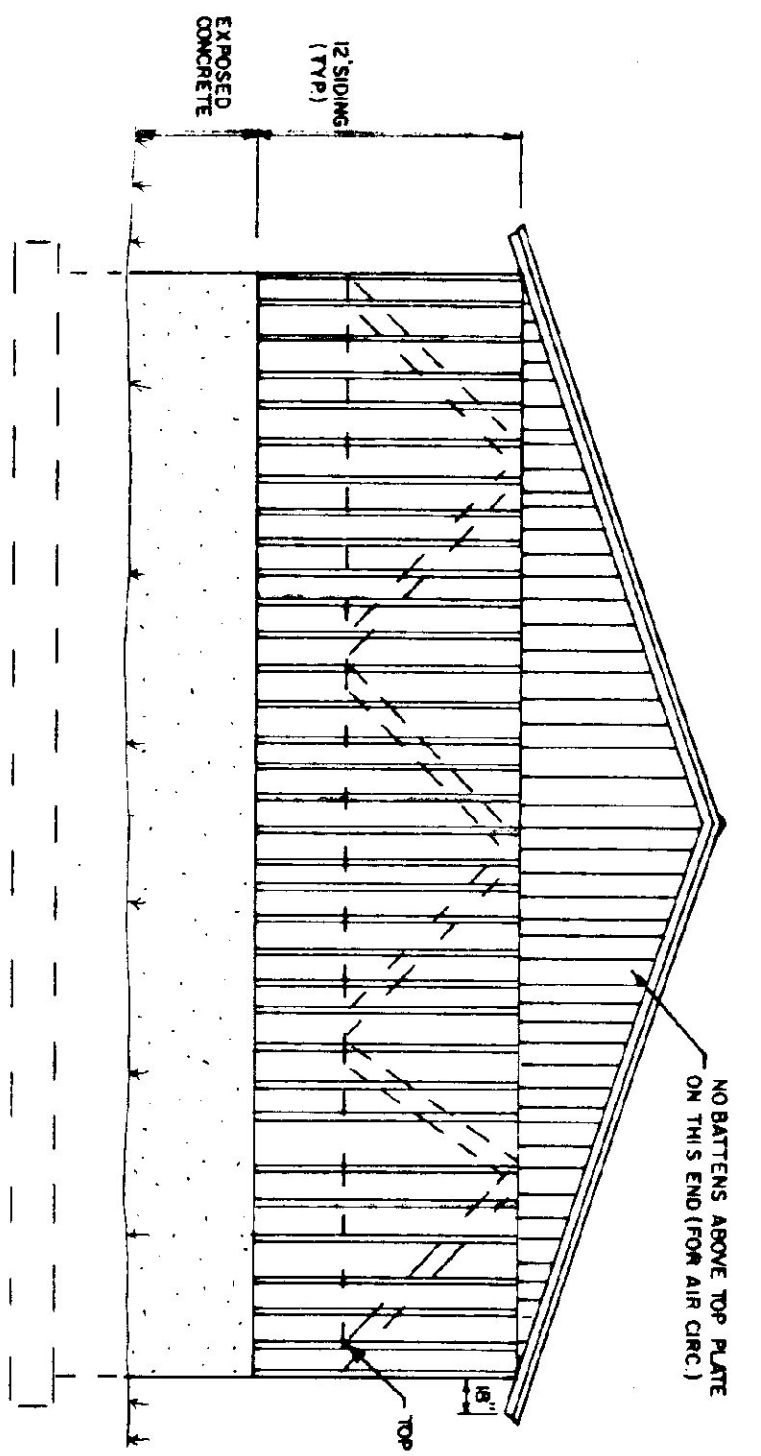
**DOOR DETAIL**  
N.T.S.



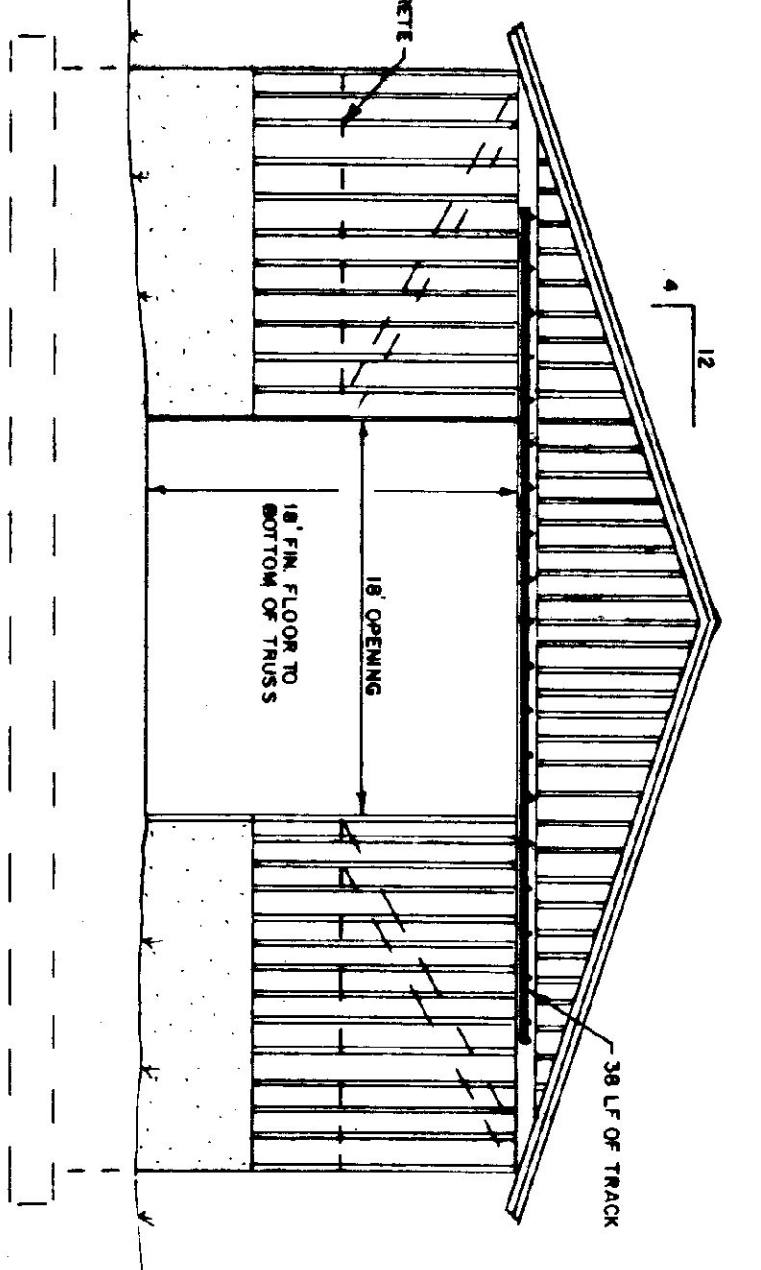
**EXPANSION JOINT DETAIL**  
N.T.S.



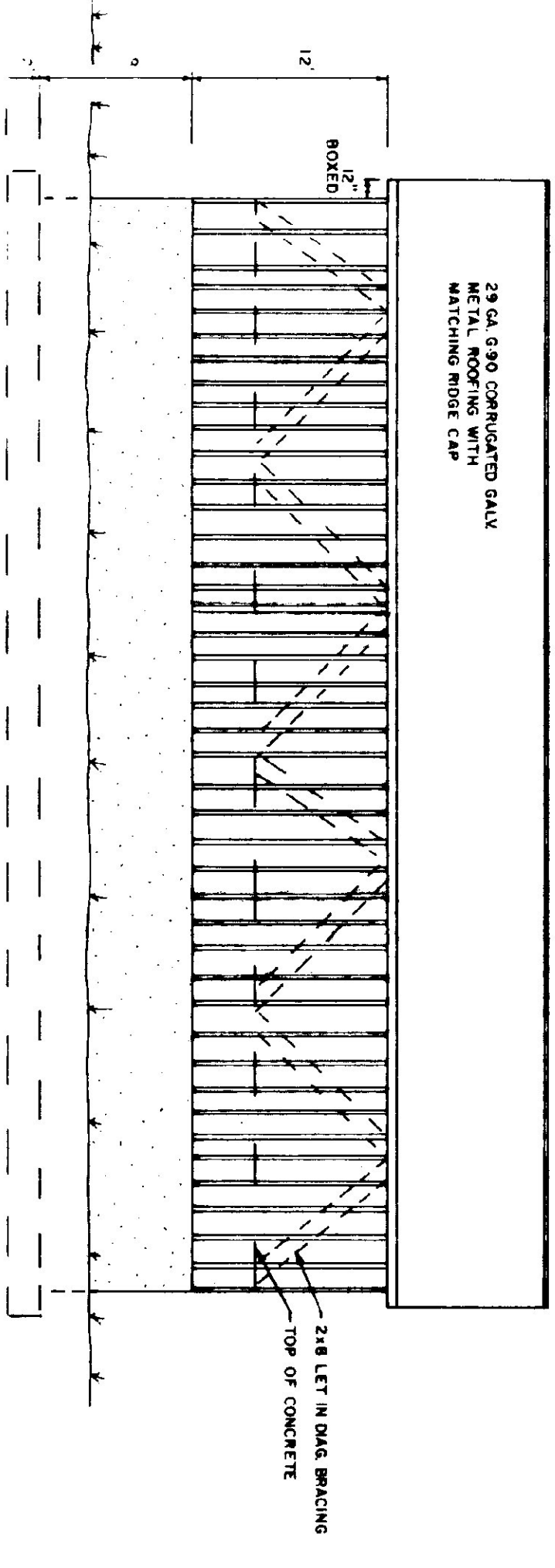
**CORNER GUARD**  
N.T.S.



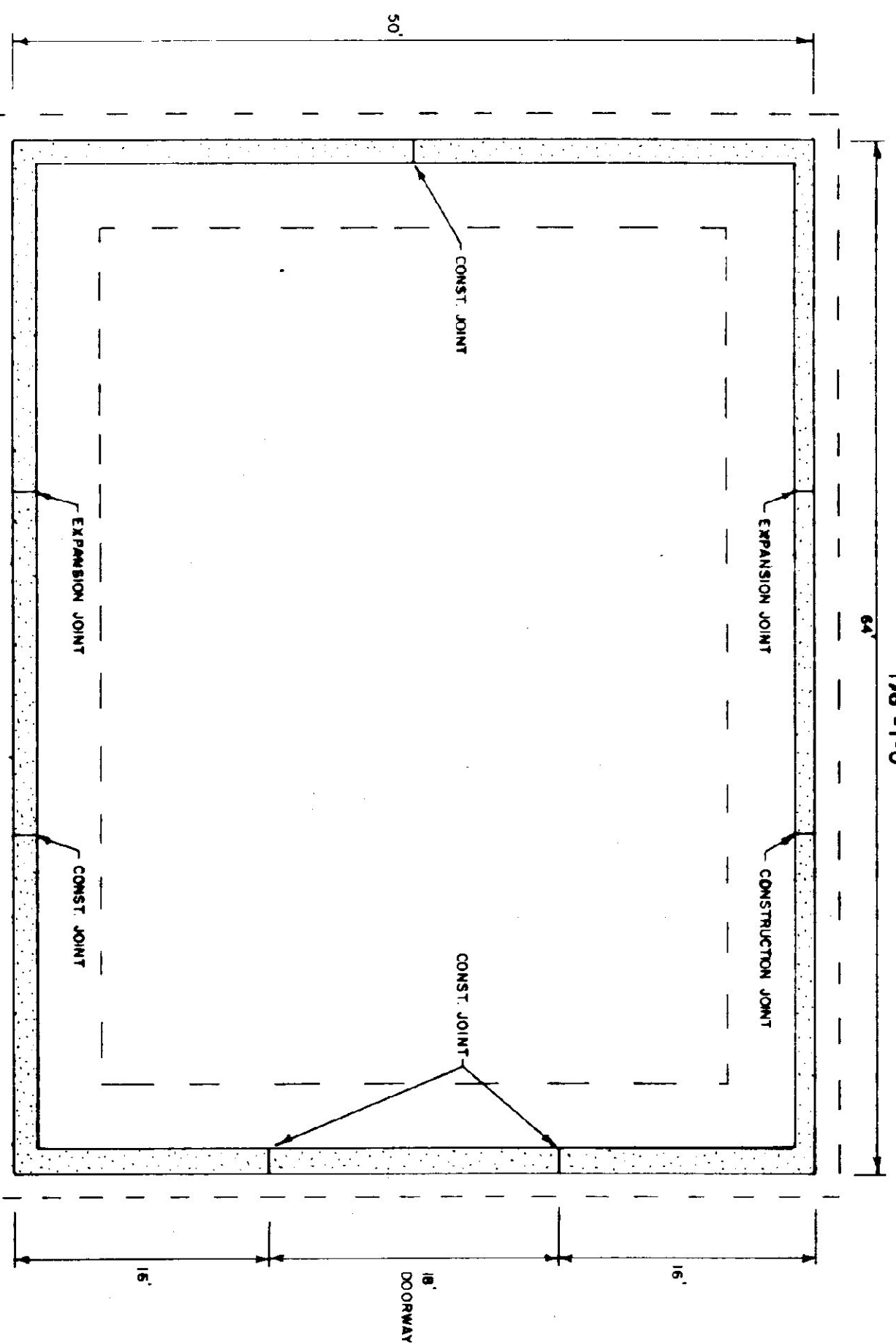
**BACK ELEVATION**  
1/8\"/>



**FRONT ELEVATION**  
1/8\"/>



**SIDE ELEVATION**  
1/8\"/>



**FOUNDATION PLAN**  
1/8\"/>

STATE OF VERMONT		50'x64'	
DEPARTMENT OF STATE BUILDINGS		SALT/SAND SHED	
AGENCY OF ADMINISTRATION		WHITE RIVER MAINTENANCE FACILITY	
MONTPELIER, VERMONT		WHITE RIVER VERMONT	
DATE: SEPT 5, 1991	SCALE: AS NOTED	DWG NO.	1 OF 1
DRAWN BY: S.K. JANAWICZ	APPROVED BY: [Signature]	REVISIONS:	

NOTE: EXACT BUILDING LOCATION AND FLOOR ELEVATION TO BE DETERMINED IN THE FIELD BY THE ENGINEER.