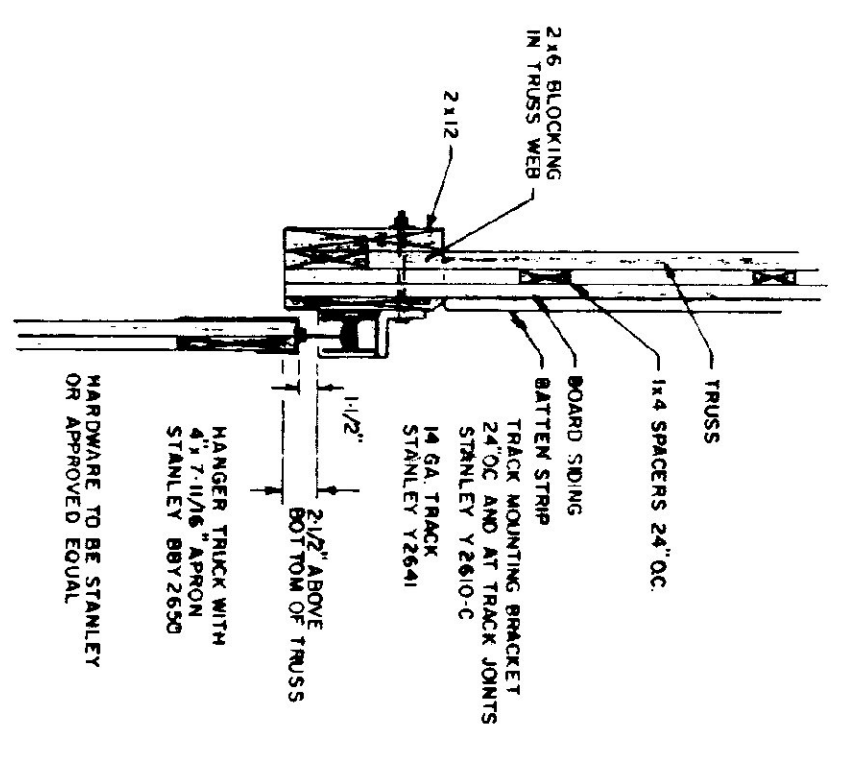


- TRUSS NOTES**
- TRUSS MANUFACTURER TO PROVIDE THE DEPT OF STATE BUILDINGS ENGINEER A SET OF ENGINEERED & STAMPED DRAWINGS FOR APPROVAL PRIOR TO TRUSS MANUFACTURE
 - TRUSS MANUFACTURER TO PROVIDE THE CONTRACTOR WITH ALL NECESSARY INSTRUCTIONS FOR PROPER TRUSS INSTALLATION, ANCHORAGE, BRACING ETC.
 - TRUSS DESIGN LOADS IN ACCORDANCE WITH THE 1987 SBCA FOR VERMONT
 - LIVE - PER 1987 SBCA FOR V1 (50 PSF MIN)
 - DEAD - AS CALCULATED FROM TRUSS & ROOF MATERIALS
 - WIND - 23 PSF
 - DIAGONAL WIND BRACING REQUIRED

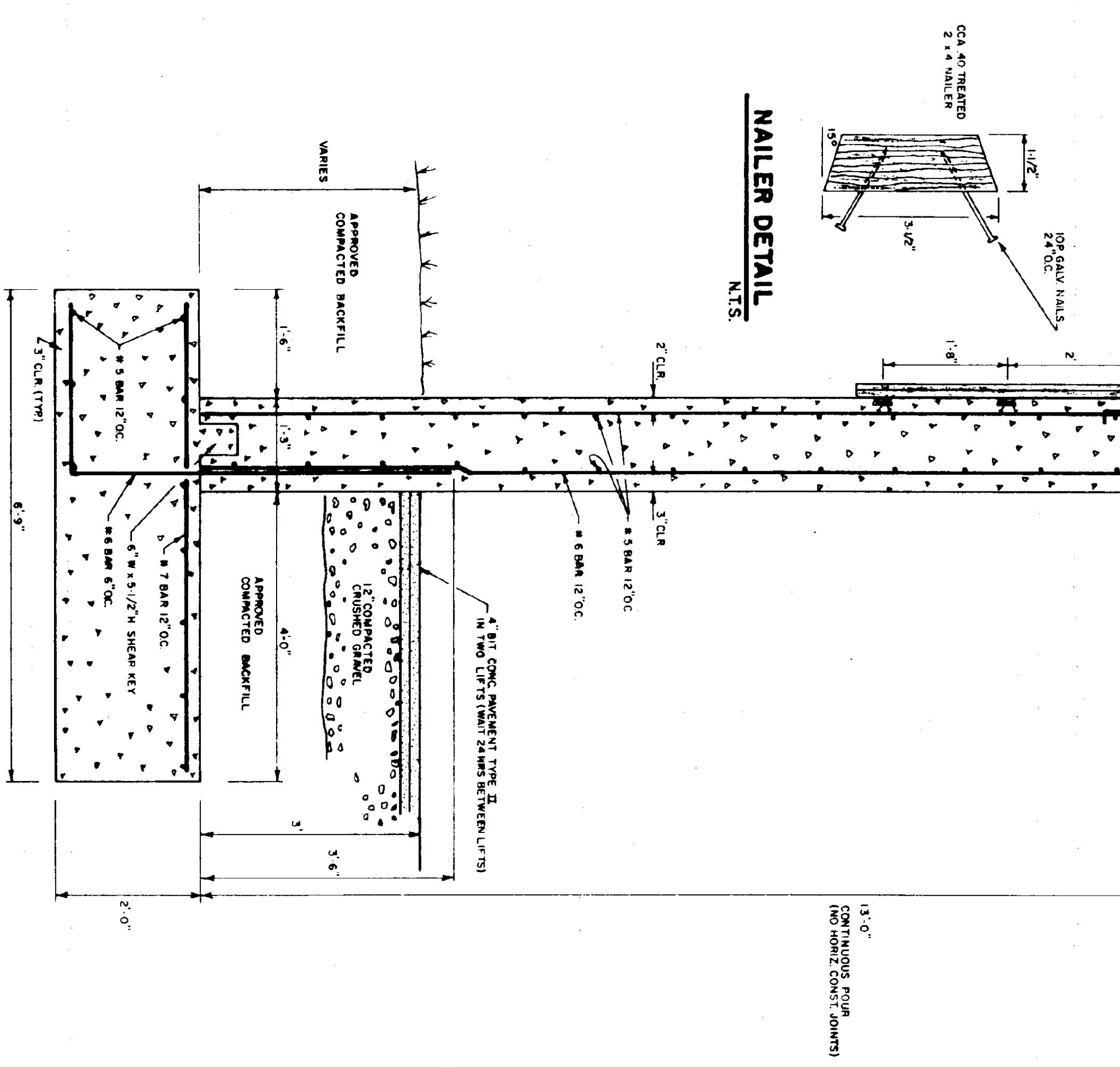
- LUMBER NOTES**
- FRAMING MEMBERS TO BE MILN DRIED CONSTRUCTION GRADE SPECIES 24% MOISTURE
 - PLANT & AID NAILERS IN CONTACT WITH CONCRETE TO BE CCA 40 TREATED
 - BOARD AND BATTEN SIDING TO BE NATIVE WOOD 6\"/>

FIGURE 11 NOTES

- ALL BOLTS AND BATTENS TO BE STAINED WITH ANTI-RUST PAINT
- AFTER INSTALLATION, EXTERIOR SIDING TO RECEIVE ONE ADDITIONAL COAT OF STAIN
- STAIN TO BE OLIVARIOL BASE SEMI TRANSPARENT OXFORD BROWN # 713



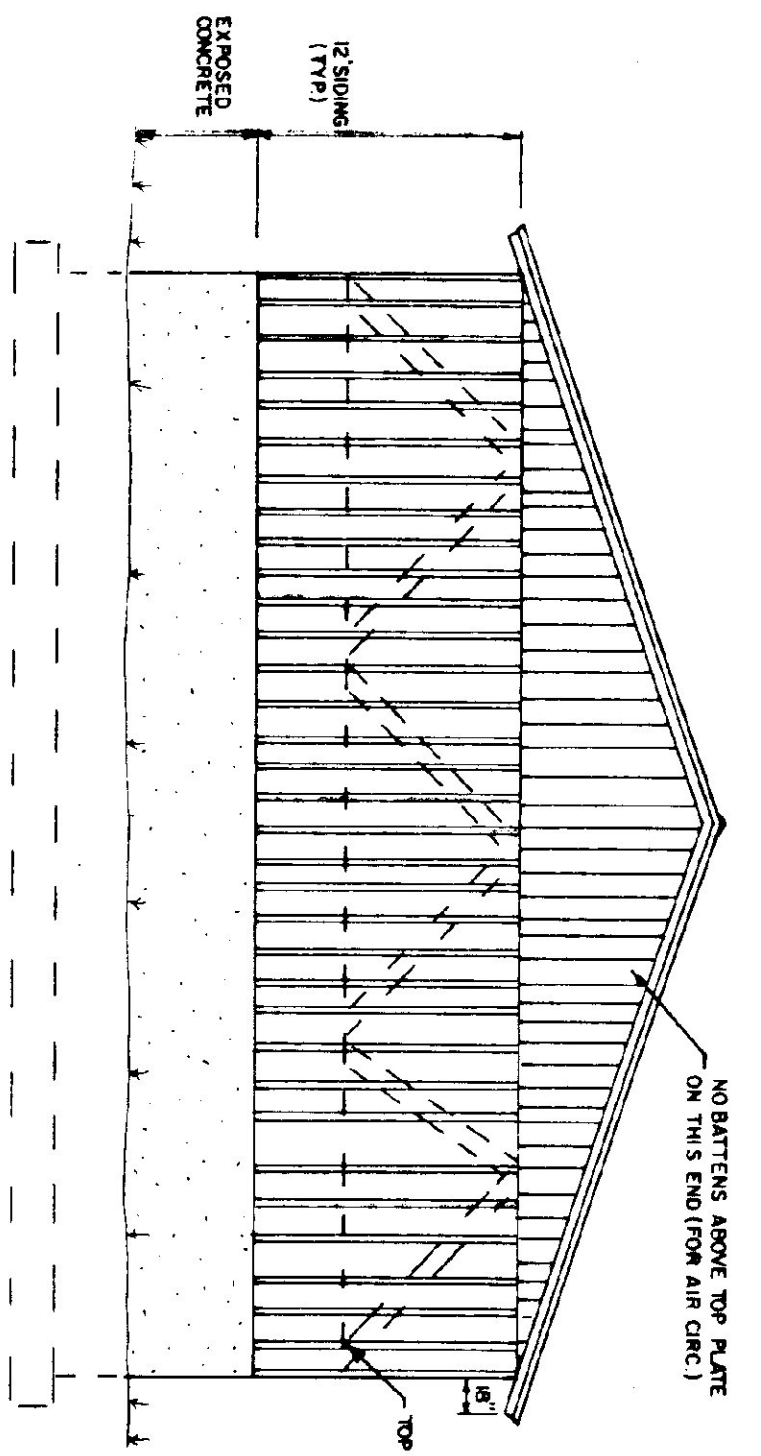
TRACK MOUNT DETAIL
N.T.S.



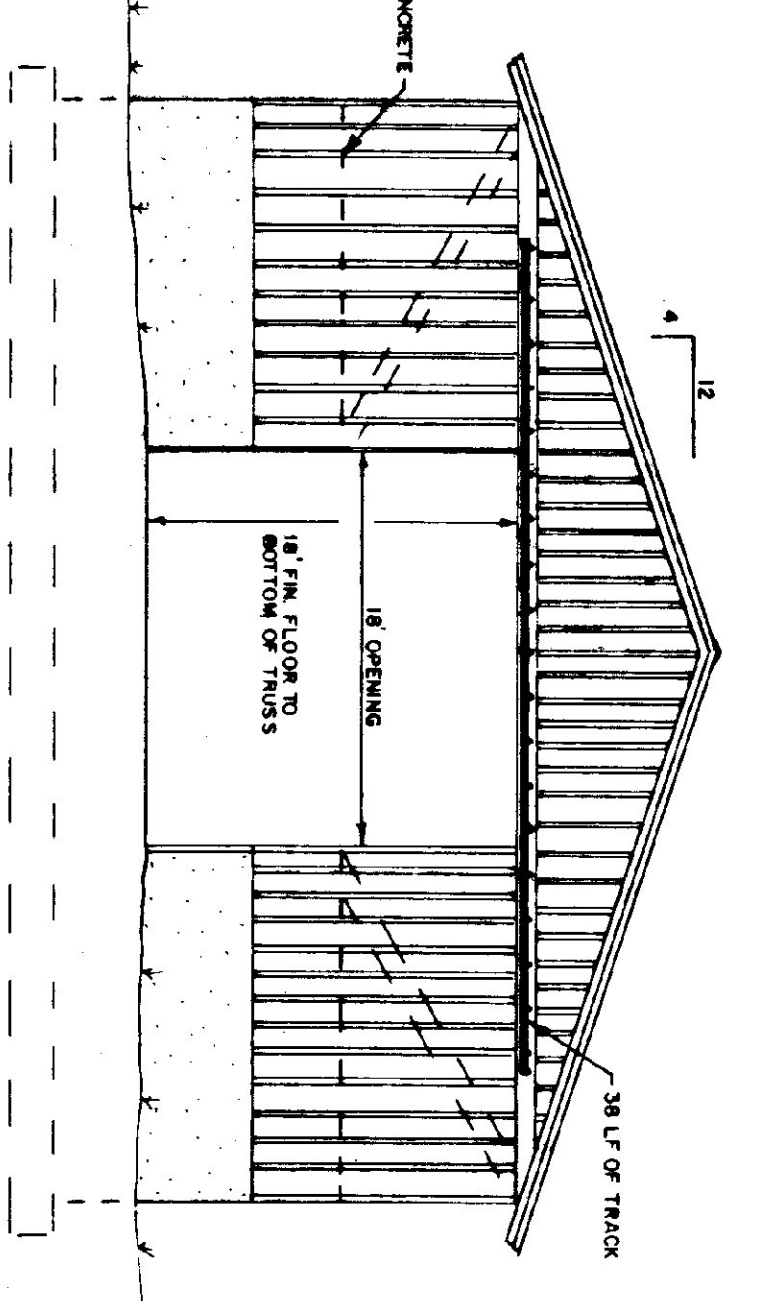
TYPICAL WALL SECTION
3/4\"/>

- CONCRETE NOTES**
- ALL CONCRETE TO BE 3500 PSI AT 28 DAYS WITH MAXIMUM SLUMP OF 4"
 - EXPOSED WALLS TO BE DRESS FINISHED
 - 1/2\"/>

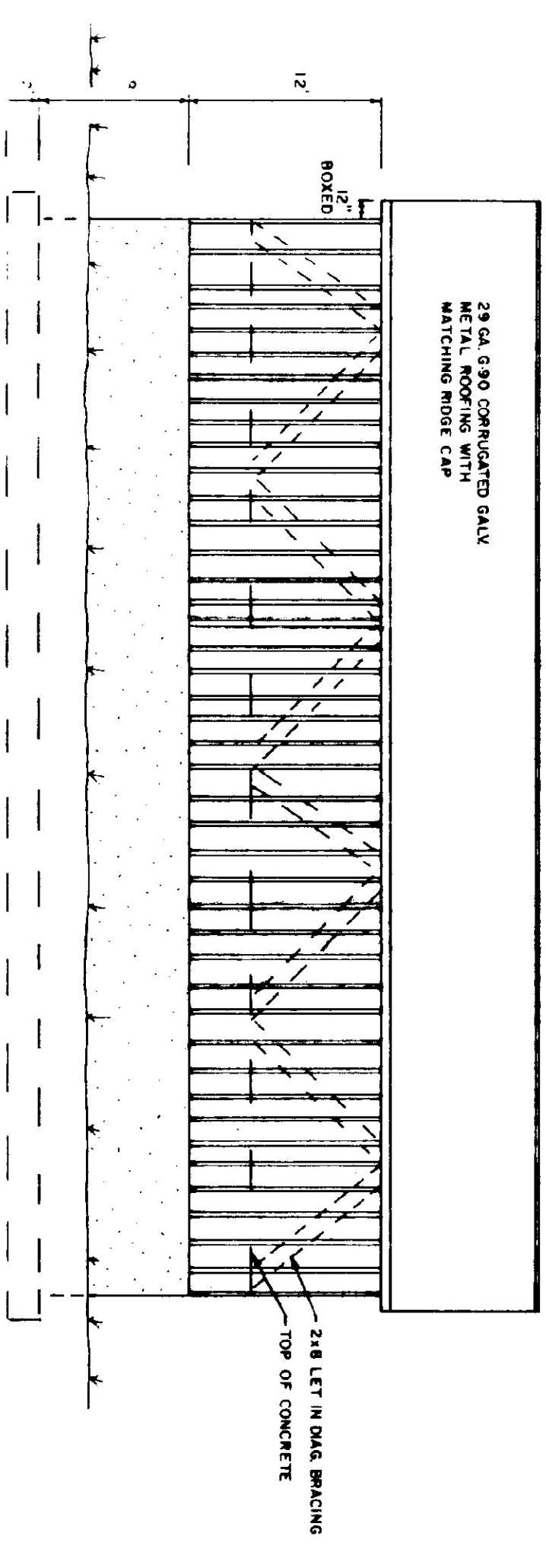
NOTE:
EXACT BUILDING LOCATION AND FLOOR ELEVATION TO BE DETERMINED IN THE FIELD BY THE ENGINEER.



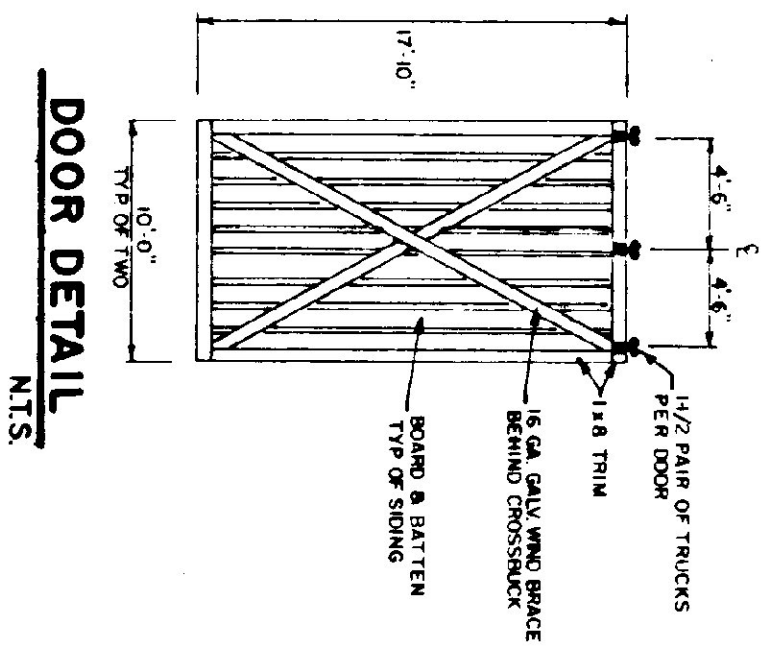
BACK ELEVATION
1/8\"/>



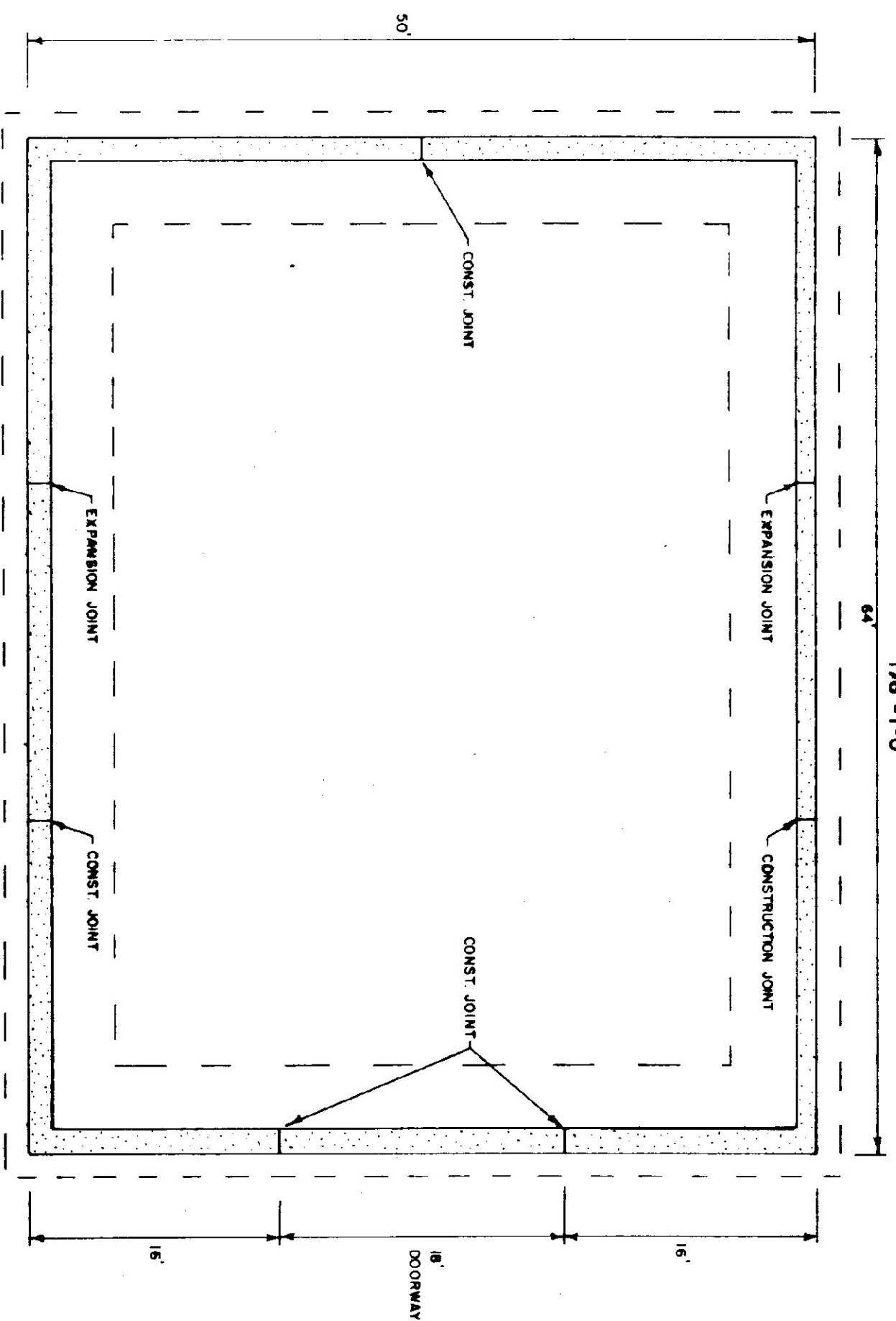
FRONT ELEVATION
1/8\"/>



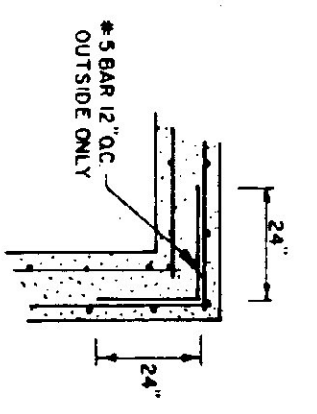
SIDE ELEVATION
1/8\"/>



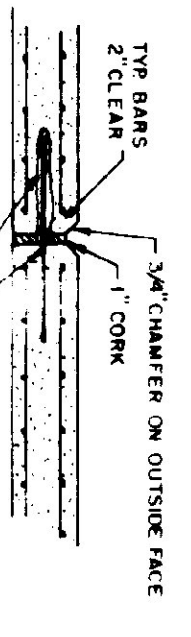
DOOR DETAIL
N.T.S.



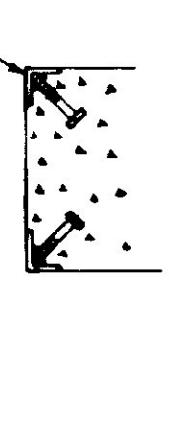
FOUNDATION PLAN
1/8\"/>



CORNER DETAIL
N.T.S.



EXPANSION JOINT DETAIL
N.T.S.



CORNER GUARD
N.T.S.

STATE OF VERMONT		50' x 64'	
DEPARTMENT OF STATE BUILDINGS		SALT/SAND SHED	
AGENCY OF ADMINISTRATION		WHITE RIVER MAINTENANCE FACILITY	
MONTPELIER, VERMONT		WHITE RIVER VERMONT	
DATE: SEPT 5, 1991	SCALE: AS NOTED	DWG. NO.	
DRAWN BY: S.K. JANAWICZ	APPROVED BY: [Signature]	REVISIONS:	1 OF 1