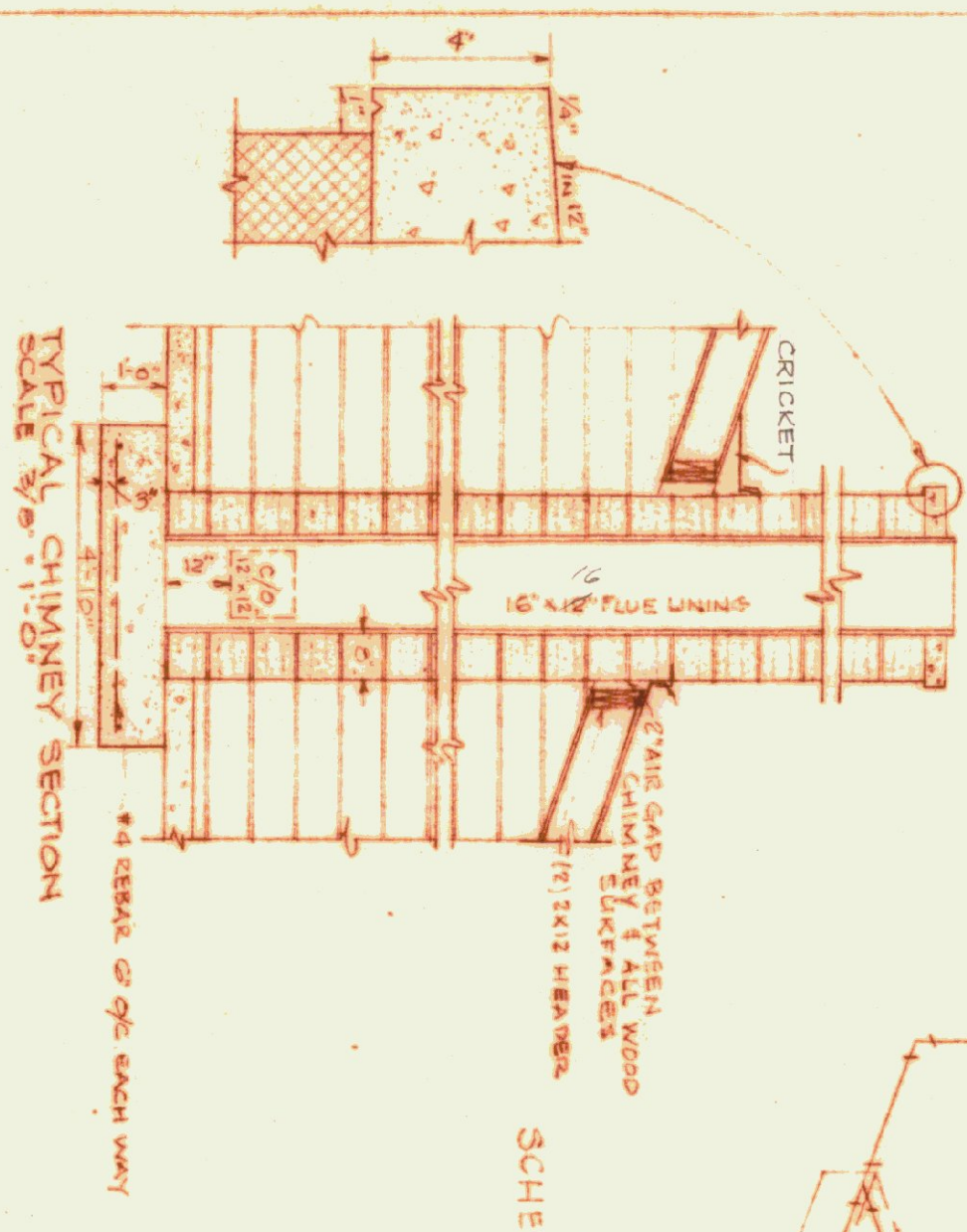
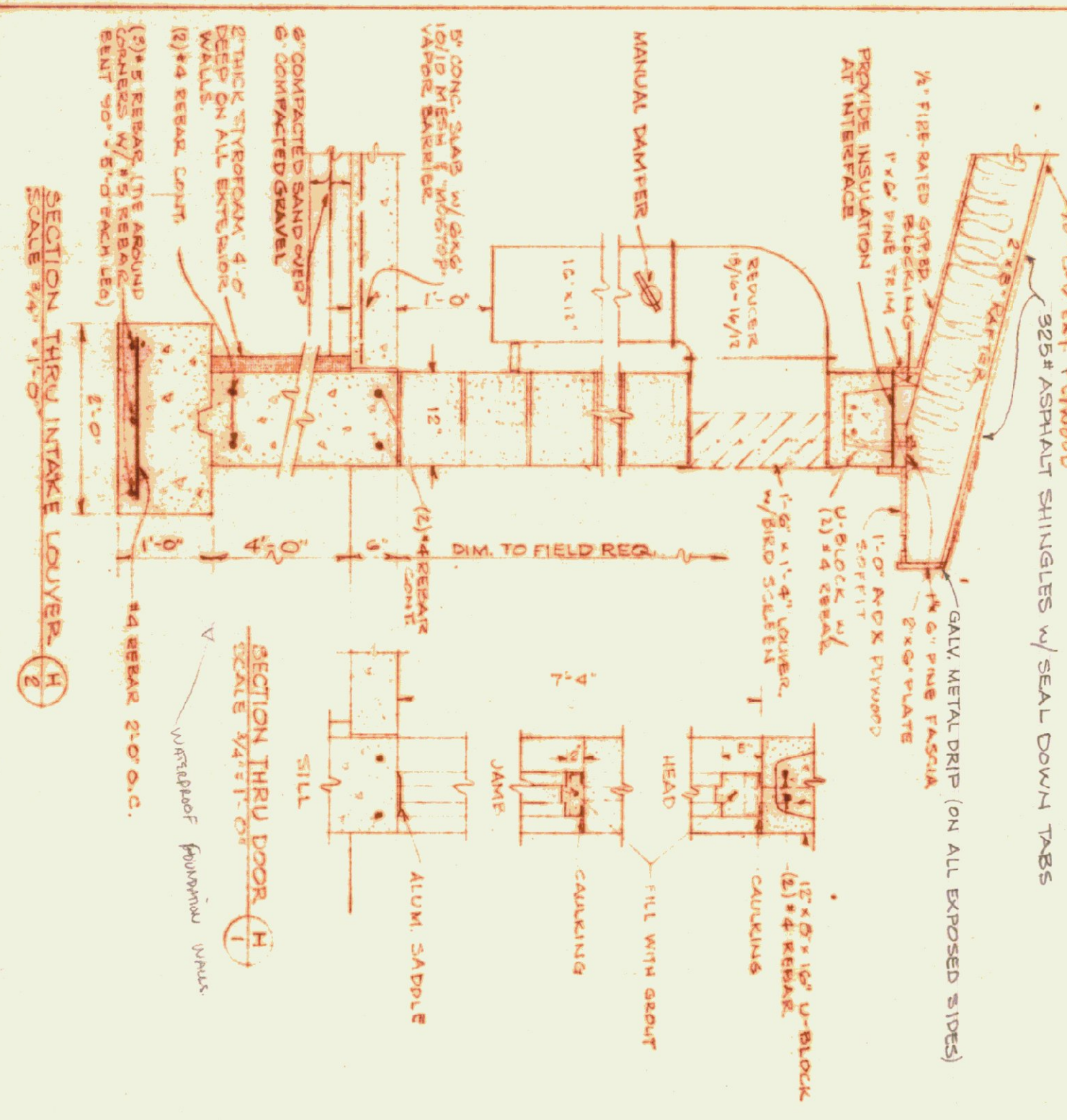


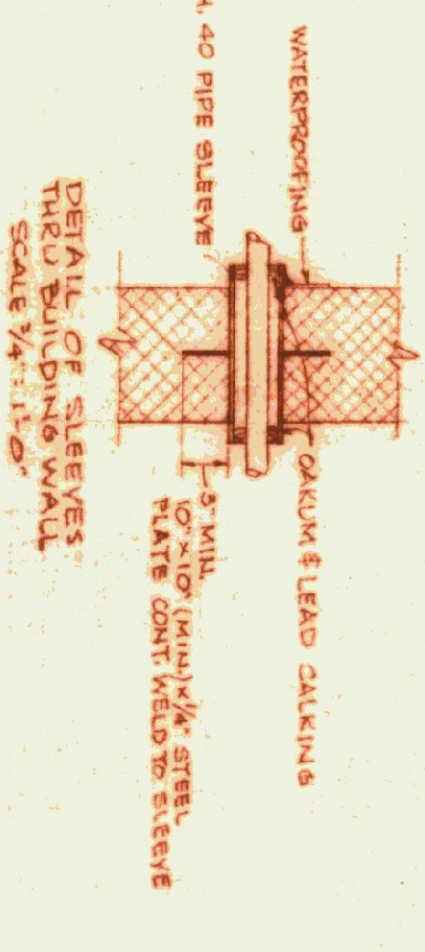
SCHEMATIC DIAGRAM OF BOILER PIPING  
N.T.S.



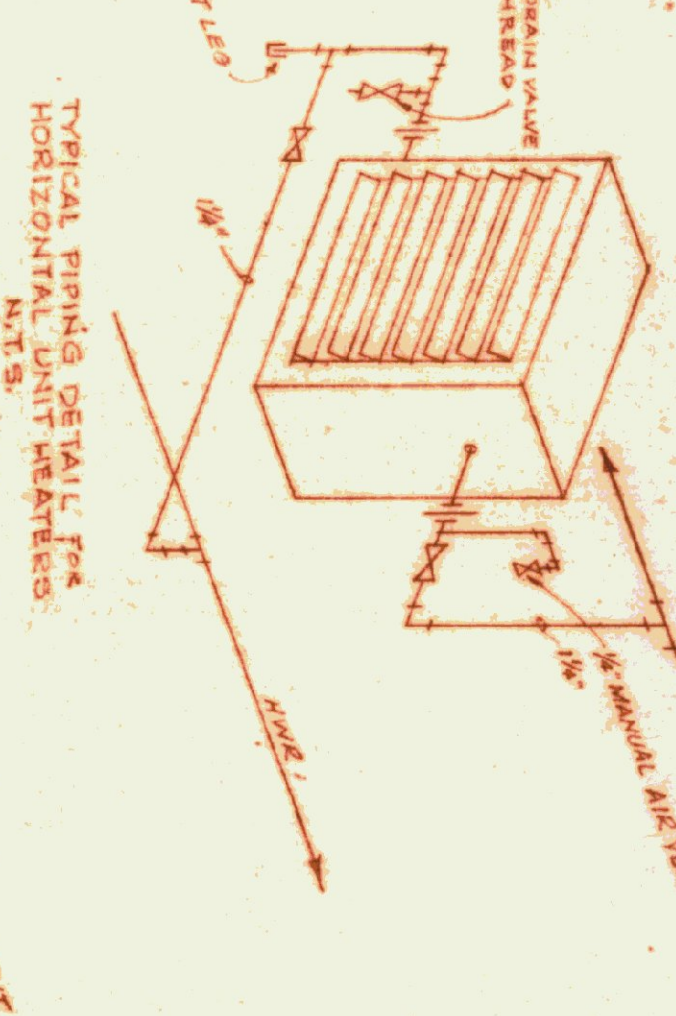
TYPICAL CHIMNEY SECTION  
SCALE 3/4" = 1'-0"



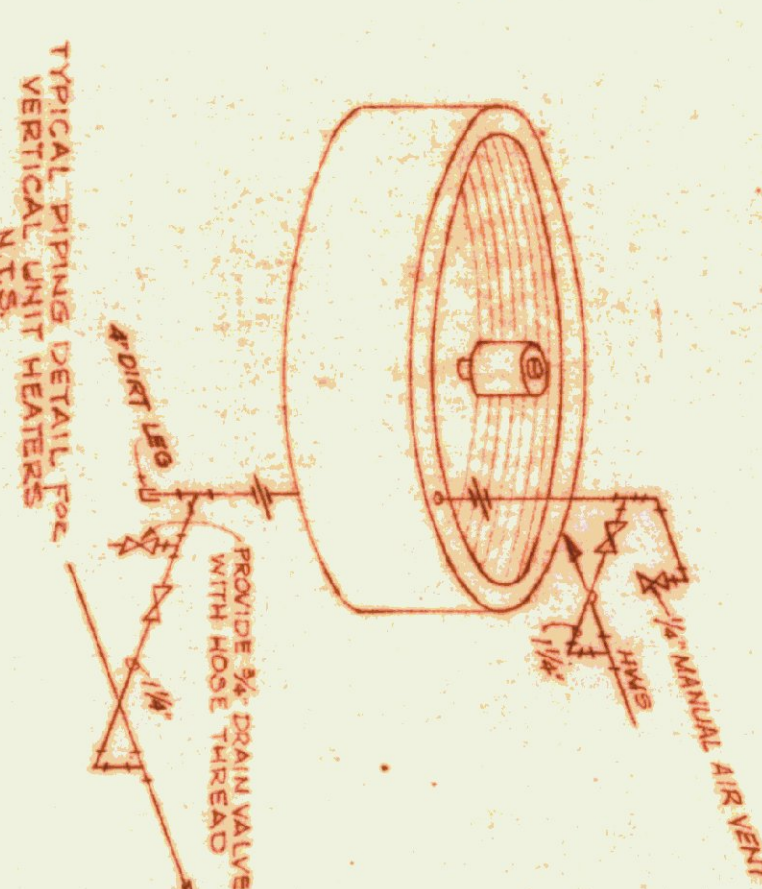
SECTION THRU INTAKE LOUVERS  
SCALE 3/4" = 1'-0"



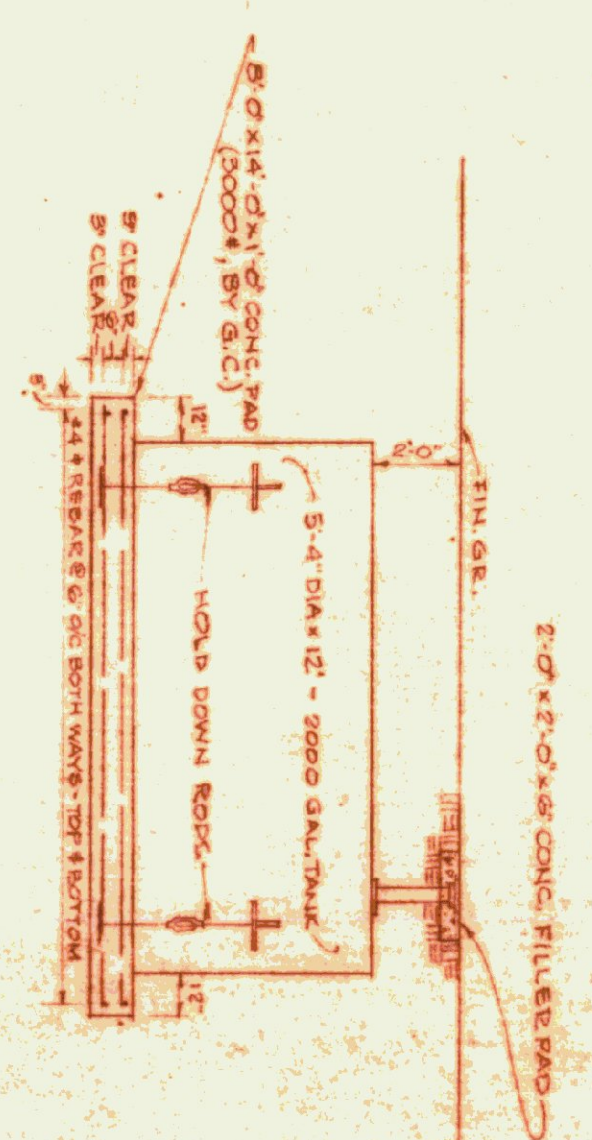
DETAIL OF SLEEVES  
THRU BUILDING WALL  
SCALE 3/4" = 1'-0"



TYPICAL PIPING DETAIL FOR  
HORIZONTAL UNIT HEATERS  
N.T.S.

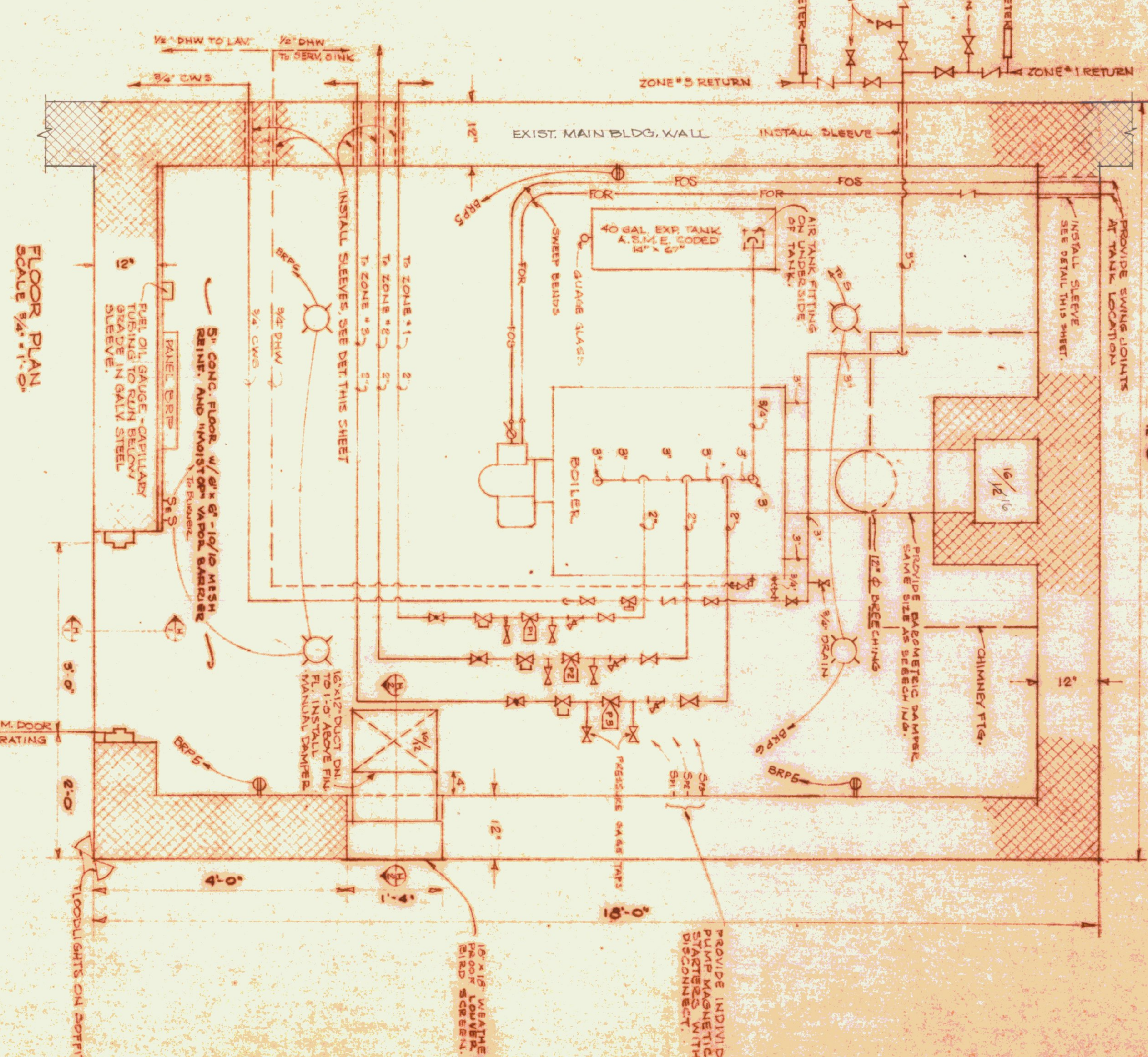


TYPICAL PIPING DETAIL FOR  
VERTICAL UNIT HEATERS  
N.T.S.



FUEL OIL TANK PAD  
SCALE 1/4" = 1'-0"

HEATING EQUIPMENT SCHEDULE (MAXIMUMS @ 50° AIR W/ 25° SUPPLY AIR TEMP.)						
MARK	TYPE	MANUFACT.	MODEL	M.B.H.	H.P.	REMARKS
UHH-1-3	UNIT HEATER	DUNHAM-BUSH				
P-1	IN-LINE	B & G	GO-2AA	300GPM	3/4"	5/16" I.P.H. SW
P-2	IN-LINE	B & G	GO-2AA	300GPM	3/4"	5/16" I.P.H. SW
P-3	IN-LINE	B & G	GO-2AA	300GPM	3/4"	5/16" I.P.H. SW
RAD	FIN-TUBE	STERLING				120V, 1 P.H., SW 1/2" I.P.H. STEEL FINES 1/2" FINES / L.F.R.



FLOOR PLAN  
SCALE 3/4" = 1'-0"

- GENERAL NOTES -
1. CONTRACTOR SHALL REMOVE ALL EXISTING GAS WIRELESS HEATERS INCLUDING ALL ASSOCIATED PIPING, ELECTRICAL WIRING, CONTROLS, HANGERS ETC.
  2. ALL EQUIPMENT & MATERIALS REMOVED SHALL REMAIN THE PROPERTY OF THE OWNER.
  3. ANY EQUIPMENT OR MATERIALS SO REMOVED AND NOT WANTED BY THE OWNER SHALL BE REMOVED FROM THE PREMISES BY THE CONTRACTOR.
  4. MOTORS ON ALL NEW UNIT HEATERS SHALL BE TOTALLY ENCLOSED EXPLOSION-PROOF TYPE, CONSTRUCTION TO BE PREVIOUSLY APPROVED BY THE OWNER.
  5. IN ADDITION TO NORMAL OPERATING CONDUITS & PIPING ALL VERTICAL DISCHARGE UNIT BUILDING TEMPERATURE AT HEATER LOCATION REACHES THE PRESCRIBED LIMIT WITH CONTROLLING DEVICE SHALL BE OF A TYPE THAT CAN BE MANUALLY VARIATED TO OPERATE THE FAN AT ANY TEMPERATURE BETWEEN 90°F AND 200°F (AT O.H. ELEVATION) SEE SPEC.
  6. ALL COLD WATER SUPPLY PIPING ABOVE FLOOR SLAB ELEVATION SHALL BE INSULATED AND THE INSULATION PAINTED.
  7. EACH CIRCULATING PUMP SHALL HAVE BUILT-IN THERMAL OVERLOAD PROTECTION.
  8. EACH U.H. SHALL HAVE AN ADJUSTABLE CONTROL TO PREVENT THE FAN FROM OPERATING BELOW A PREDETERMINED HWY. TEMP. TO PREVENT COLD AIR CIRCULATION WITHIN THE BUILDING.
  9. ALL PUMPS SHALL BE SITED TO OPERATE ON 200/250/440 V. 3 PH. 4 W. UNLESS OTHERWISE SPECIFIED OR INDICATED.
  10. ALL WOOD STRUCTURAL MEMBERS (PARTS) PLATES, BRACKETS ETC) SHALL BE TREATED WITH "WOOD-LENE PRESERVATIVE" (KIDDERVILLE) OR APPROVED SOLID BENEATH SECTION.
  11. PROVIDE TWO (2) ALL BURNER GALLERY SWITCHES, ONE IN MAIN BUILDING FLOOR AND ONE AT MAIN BURNER ROOM FINISHED FLOOR TO BE THE SAME ELEVATION AS MAIN BUILDING FLOOR.
  12. BOILER ROOM FINISHED FLOOR TO BE THE SAME ELEVATION AS MAIN BUILDING FLOOR.
  13. CONCRETE BOILER PAD (SEE S.C.) SHALL BE LEVEL.
  14. PIPING FOR FUEL OIL SUPPLY AND FUEL OIL RETURN, FUEL FILTER AND VENT SHALL BE SCHEDULE 40 BLACK STEEL ASMA A106 W/ WELDABLE (NON SCREWED) FITTINGS.

- LEGENDS
- GATE VALVE
  - CHECK VALVE
  - BALANCING COCK
  - FLOW CONTROL
  - UNION
  - FUSIBLE LEVER-MATIC VALVE
  - STRAINER
  - GANDED DUPLEX OUTLET

STATE OF VERMONT  
STATE BUILDINGS DIVISION  
DEPARTMENT OF ADMINISTRATION  
MONTPELIER, VERMONT

RENOVATION OF HEATING SYSTEM AT THE  
DEPT. OF HIGHWAYS GARAGE, WHITE RIVERPORT, VT

Boiler House & Piping Details

DESIGNED BY: **RM**

DATE: 9/1/72

DRAWN BY: **CTH**

DWG. NO.: **H-2**

2 OF 2