

DEMOLITION PLAN
SCALE: 1/4" = 1'-0"

REVISIONS

SCALE: 1/4" = 1'-0"
DATE: JUNE 2002
DRAWN BY: B. MCAVOY
APPR. BY: R. BARRY

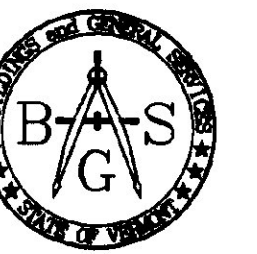
WHITE RIVER A.O.T. OFFICE
INTERIOR RENOVATIONS
DEMOLITION PLAN

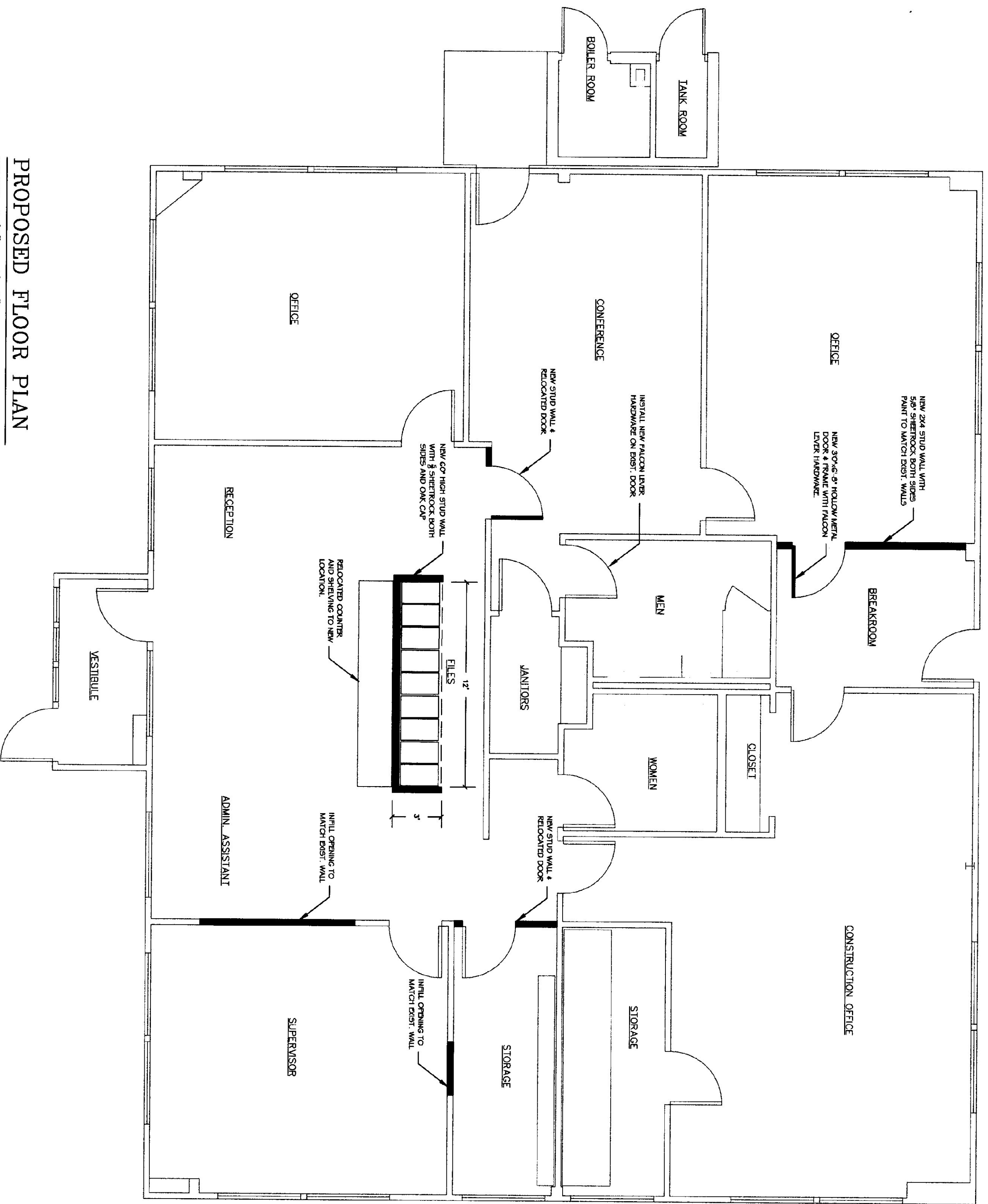
WHITERIVER,

VERMONT



STATE OF VERMONT
Department of Buildings
and General Services
Agency of Administration
Montpelier, Vermont





PROPOSED FLOOR PLAN
SCALE: 1/4" = 1'-0"

GENERAL NOTES:

- 1.) CONTRACTOR TO VERIFY ALL DIMENSIONS & EXIST. CONDITIONS.
- 2.) WORK AREA SHALL BE CLEANED AND VACUMMED ON A DAILY BASIS.
- 3.) PROTECT ADJACENT AREAS & EQUIPMENT FROM DUST AND DEBRIS USING POLY BARRIERS.
- 4.) REMOVE MATERIAL TO BE DISPOSED OF IN A LEGAL MANNER.
- 5.) PATCH/REPAIR ALL DISTURBED SURFACES TO MATCH EXISTING CONDITIONS.
- 6.) APPLY (3) COATS OF LATEX "EGGSHELL" PAINT BY SHERWIN WILLIAMS OR APPROVED EQUAL. (1) COAT PRIMER, (2) COATS FINISH.
- 7.) ALL ELECTRICAL WORK TO CONFORM TO N.E.C. LATEST EDITION.



STATE OF VERMONT
Department of Buildings
and General Services
Agency of Administration
Montpelier, Vermont



WHITE RIVER A.O.T. OFFICE
INTERIOR RENOVATIONS
PROPOSED FLOOR PLAN

WHITERIVER, VERMONT

REVISIONS

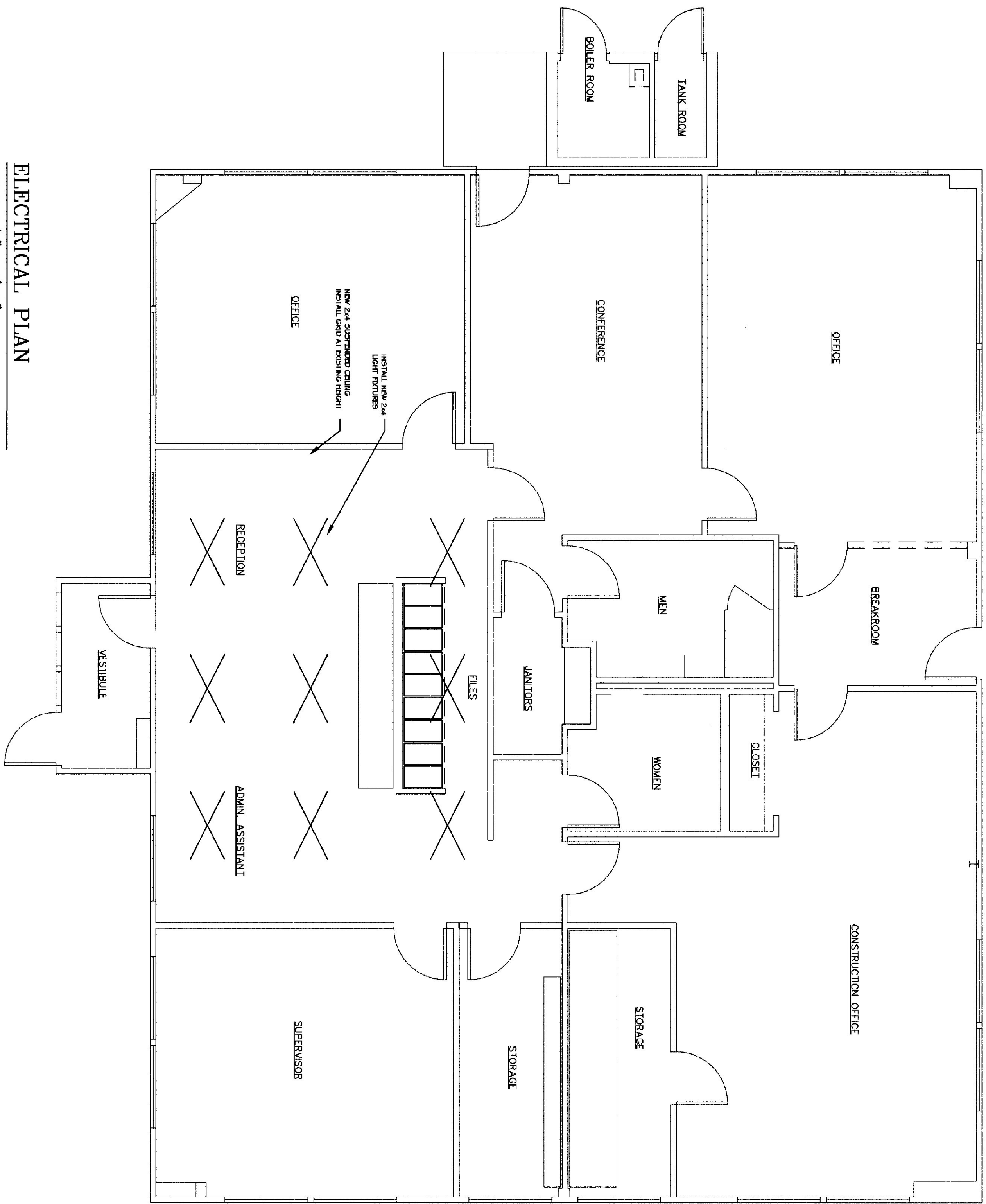
SCALE: 1/4" = 1'-0"
DATE: JUNE 2002
DRAWN BY: B. MCAVOY
APPR. BY: R. BARRY

WHITE RIVER
A.O.T. OFFICE
INTERIOR
RENOVATIONS

PROPOSED PLAN

A-2

2 OF 3



ELECTRICAL PLAN
SCALE: 1/4" = 1'-0"

REVISIONS

SCALE: 1/4" = 1'-0"
DATE: JUNE 2002
DRAWN BY: B. MCAVOY
APPR. BY: R. BARRY

WHITE RIVER A.O.T. OFFICE
INTERIOR RENOVATIONS
ELECTRICAL PLAN

WHITERIVER,

VERMONT



STATE OF VERMONT
Department of Buildings
and General Services
Agency of Administration
Montpelier, Vermont

