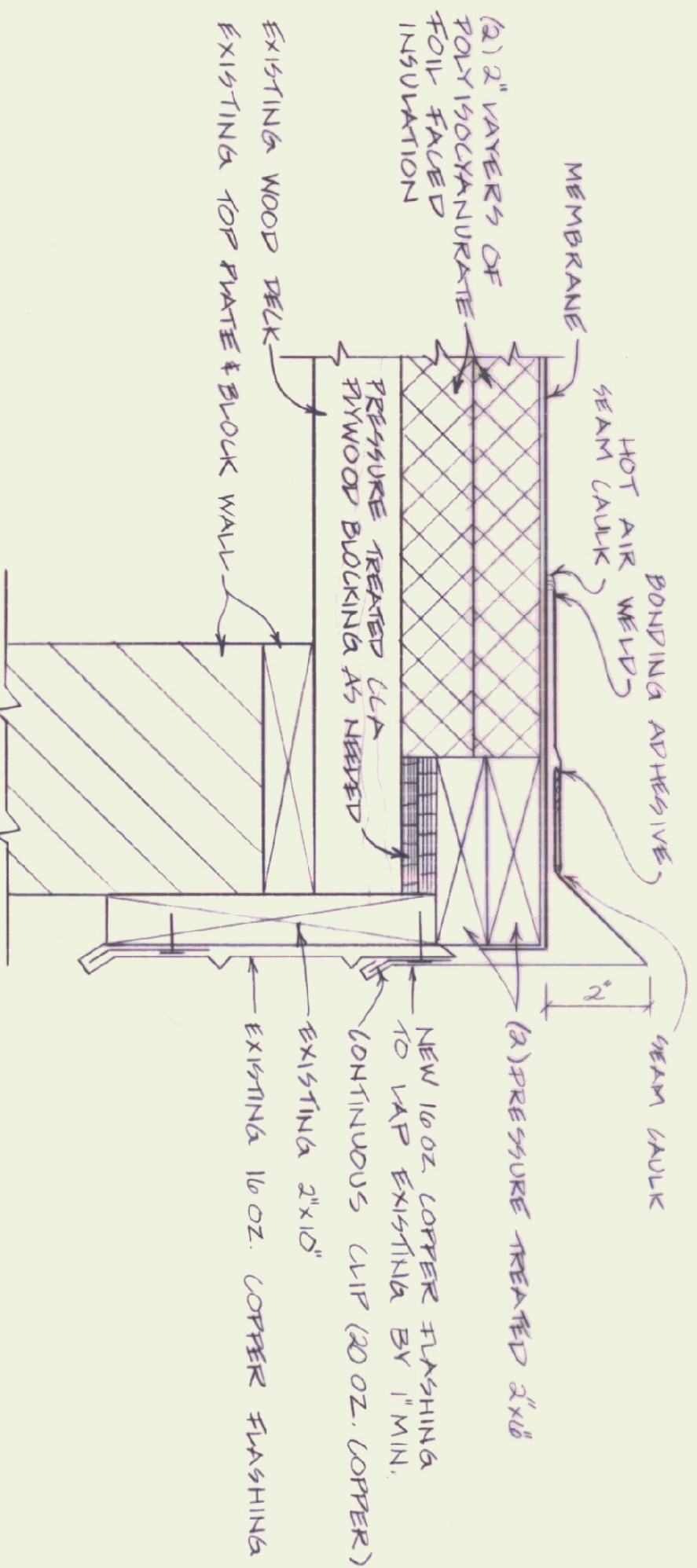
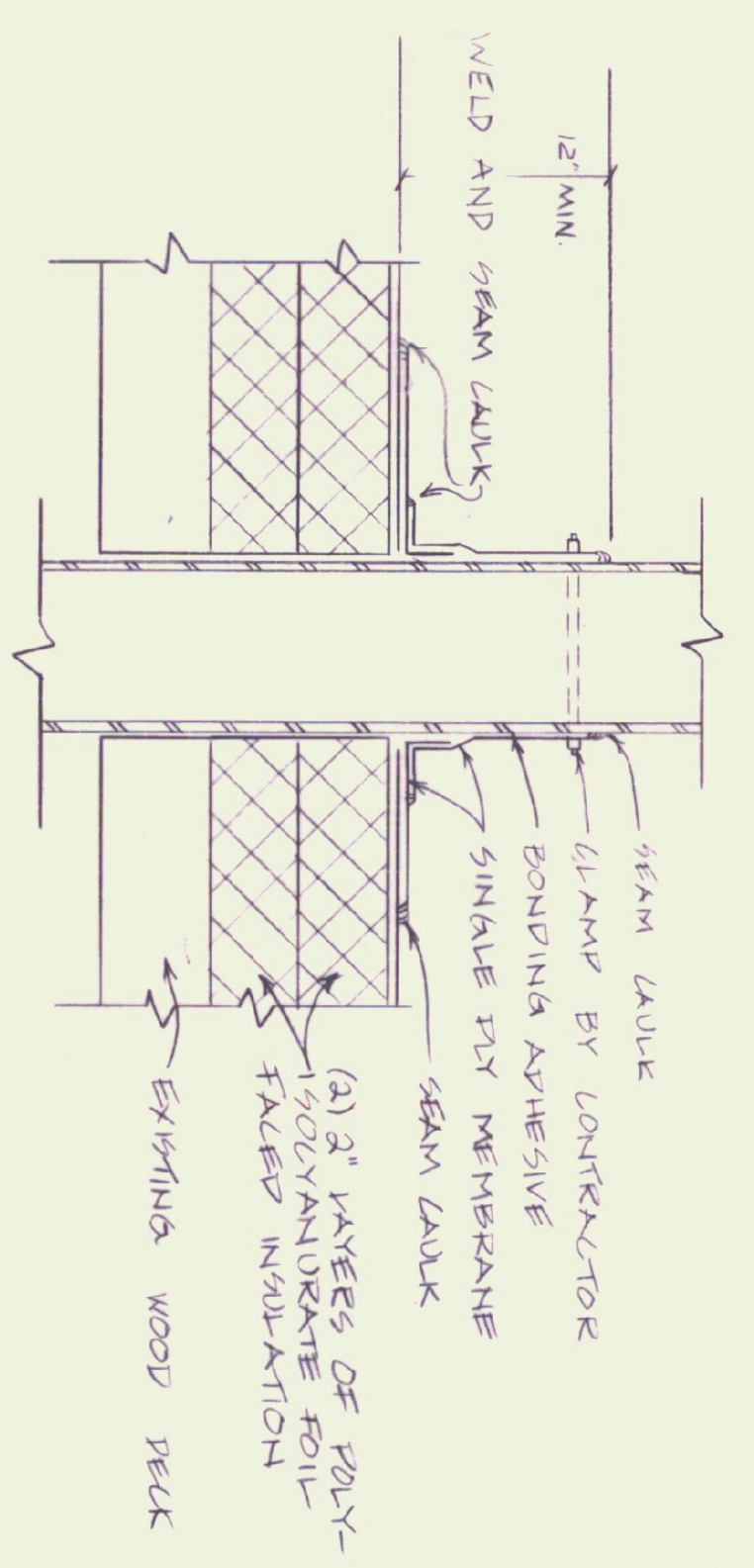


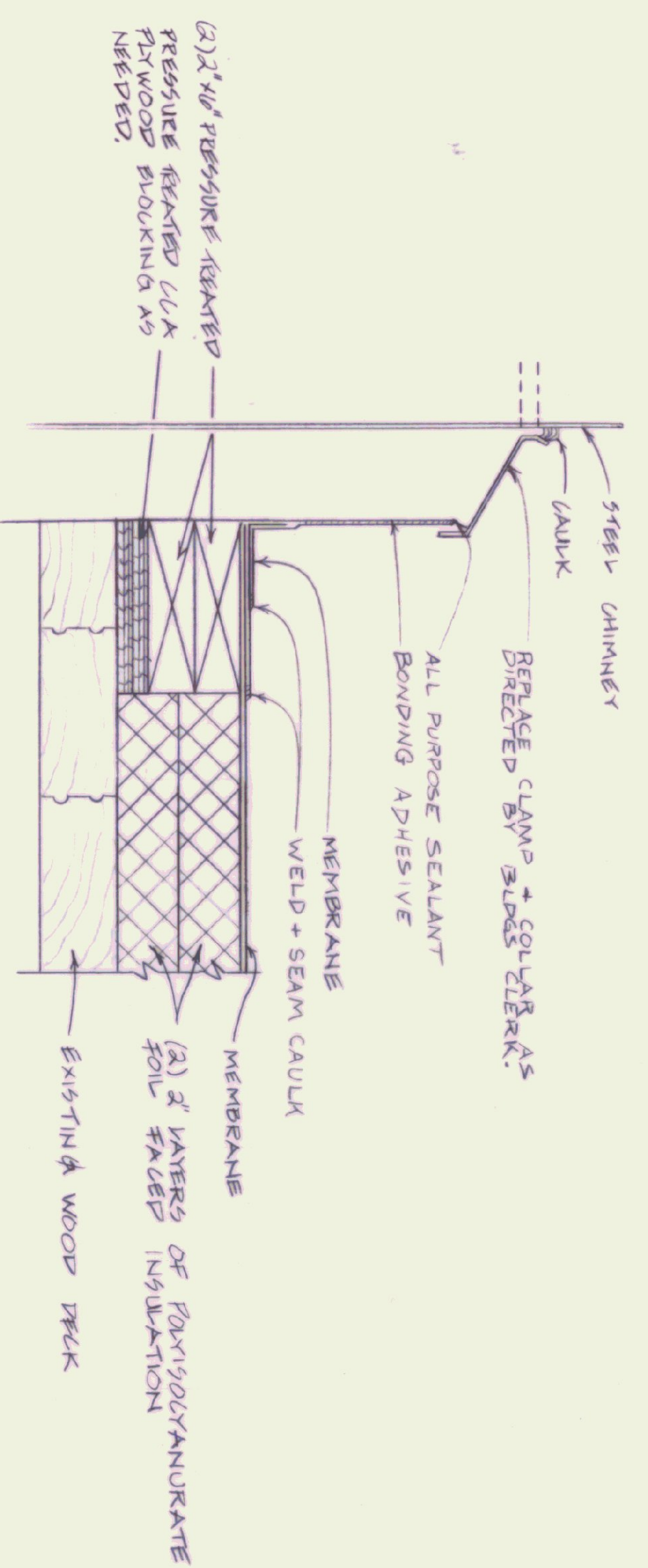
ROOF PLAN
SCALE 1/8"=1'-0"



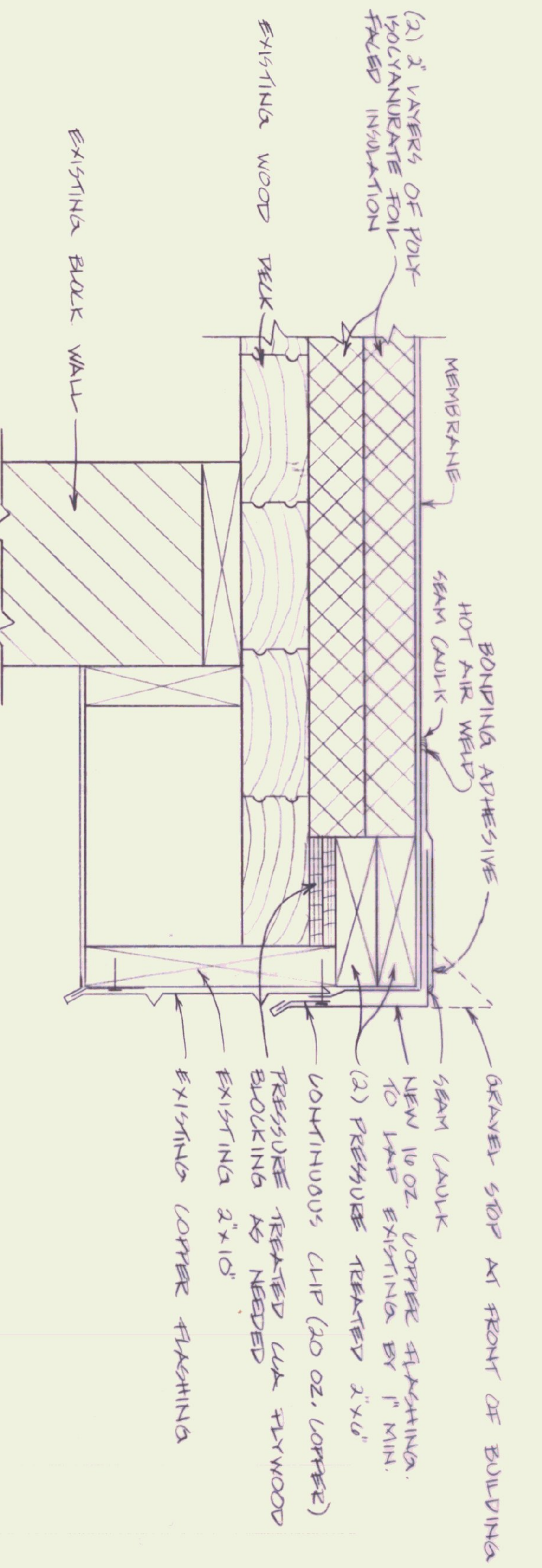
SECTION A-A ROOF RAKE EDGE
SCALE 3/4"=1'-0"



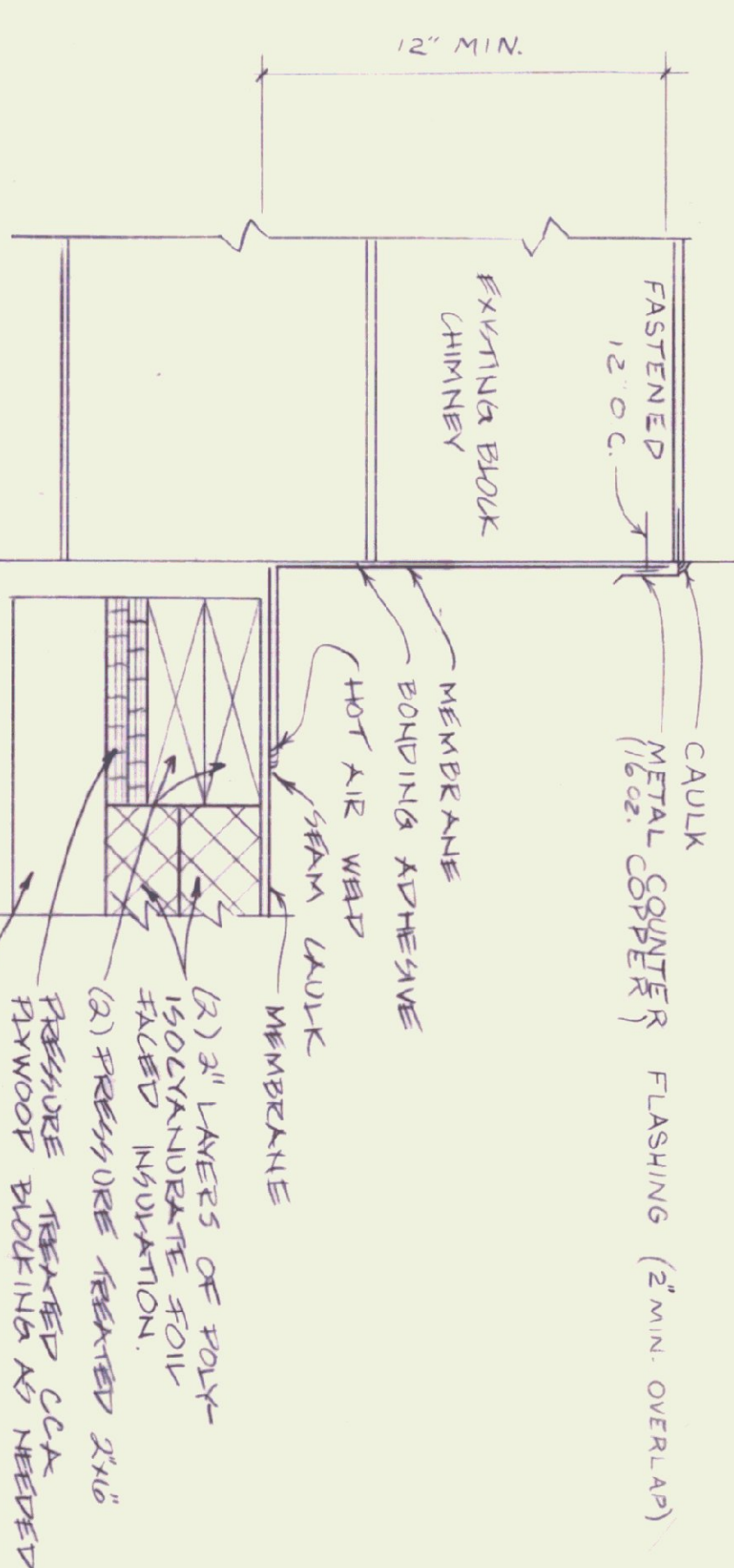
VENT STACK DETAIL
SCALE 3/4"=1'-0"



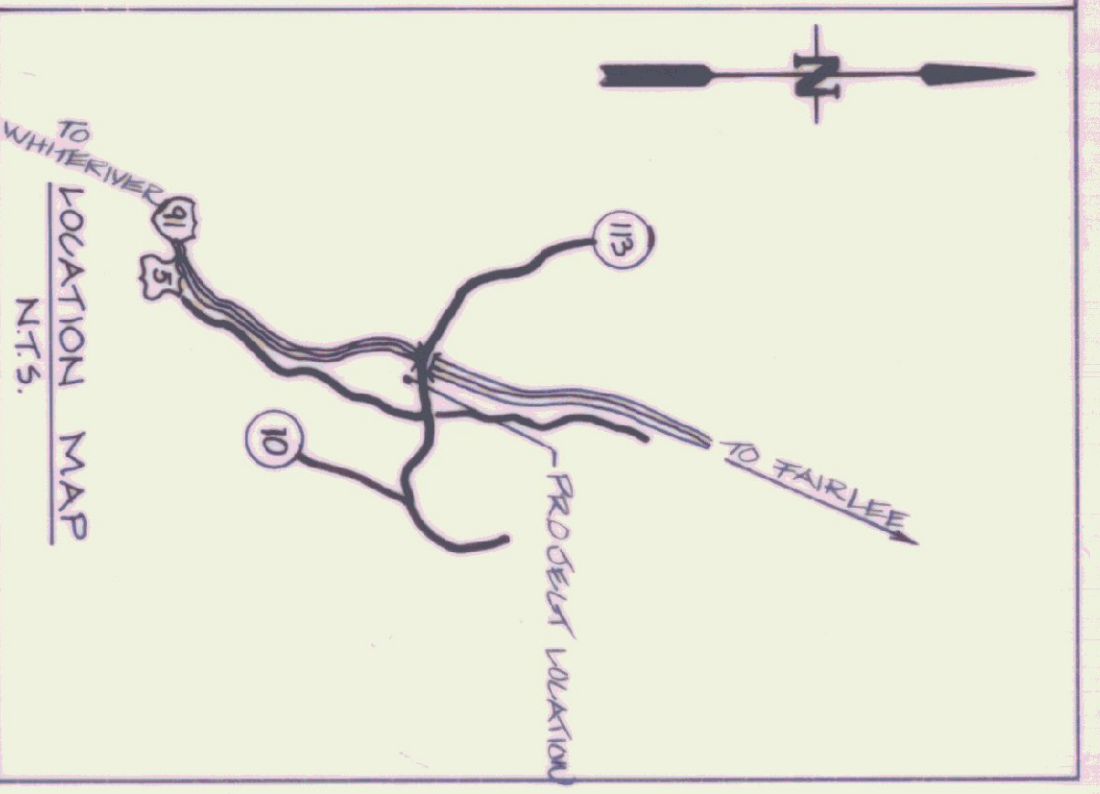
STEEL CHIMNEY DETAIL
SCALE 3/4"=1'-0"



SECTION B-B ROOF DRIP EDGE
SCALE 3/4"=1'-0"



CHIMNEY FLASHING DETAIL
SCALE 3/4"=1'-0"



- NOTES
- 1) REMOVE EXISTING ROOFING MATERIAL ABOVE WOOD DECKING. REPLACE WITH NEW BALUSTED SINGLE PLY MEMBRANE ROOFING SYSTEM.
 - 2) NO WOOD DECK DETERIORATION WAS OBSERVED. ONLY THE WOOD DECK IS EXPOSED. ALL AREAS SHOWING DETERIORATION SHOULD BE REPAIRED AS DIRECTED BY BUILDING ENGINEER.

STATE OF VERMONT		DEPARTMENT OF TRANSPORTATION	
DEPARTMENT OF STATE BUILDINGS		THE STORFORD 4 BAY GARAGE	
AGENCY OF ADMINISTRATION		REEROOFING PROJECT	
MONTPELIER, VERMONT		VERMONT	
DATE: 12-11-85	SCALE: AS NOTED	REVISIONS:	DWG. NO. R-1
DRAWN BY: R. TREBURN	APPROVED BY: F. PRATT		1 OF 1