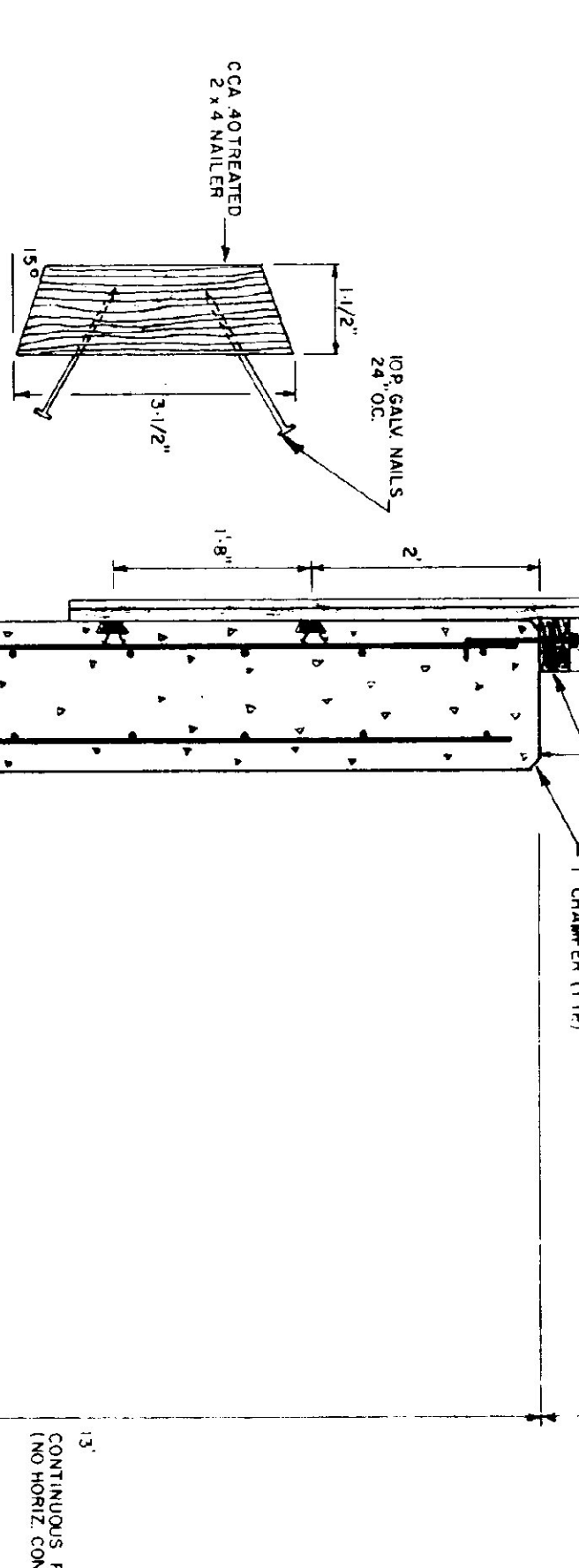


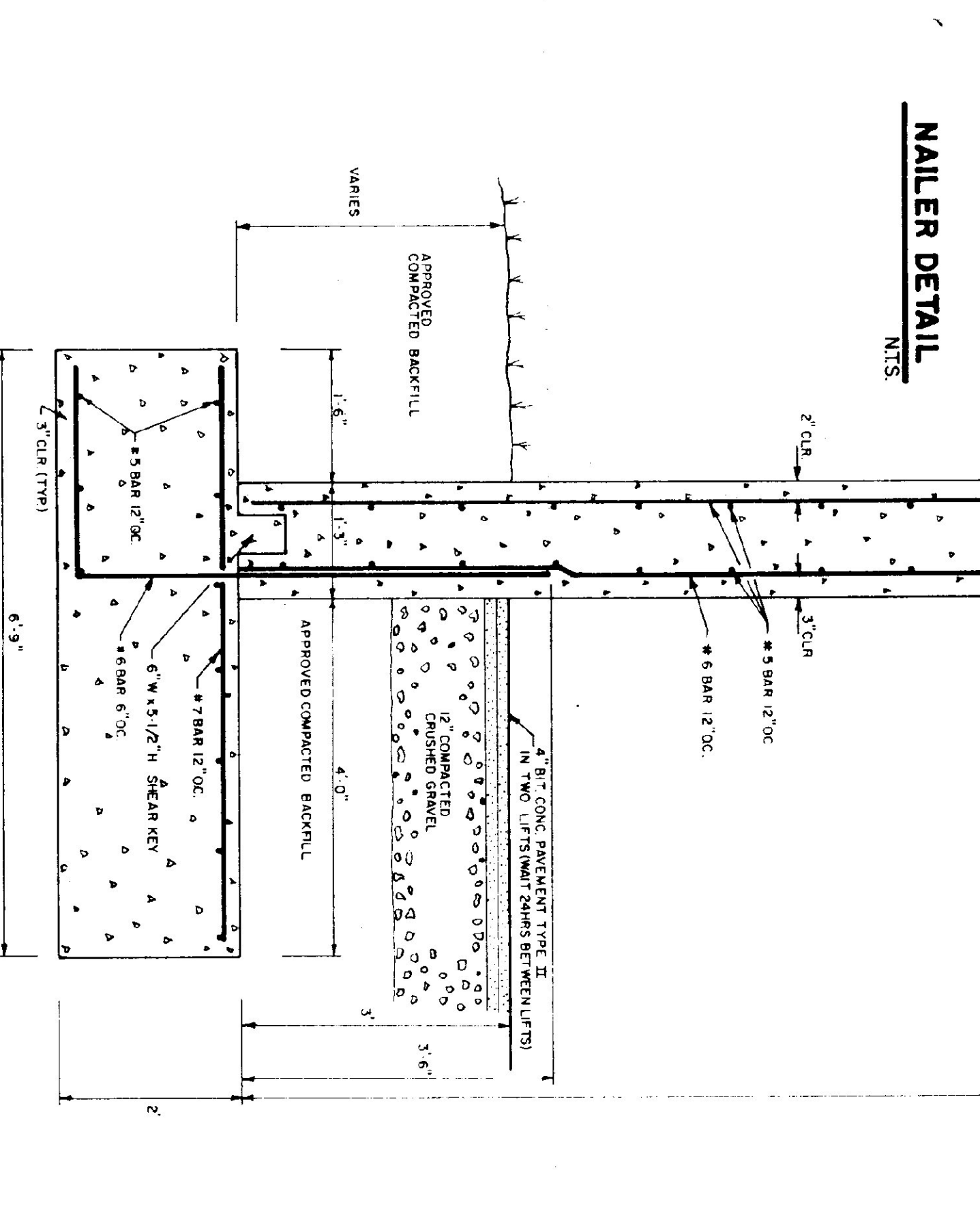
- TRUSS NOTES**
- TRUSS MANUFACTURER TO PROVIDE THE DEPT. OF STATE BUILDINGS ENGINEER A SET OF ENGINEERED & STAMPED DRAWINGS FOR APPROVAL PRIOR TO TRUSS MANUFACTURE.
  - TRUSS MANUFACTURER TO PROVIDE THE CONTRACTOR WITH ALL NECESSARY INSTRUCTIONS FOR PROPER TRUSS INSTALLATION, ANCHORAGE, BRACING, ETC.
  - TRUSS DESIGN LOADS IN ACCORDANCE WITH THE 1987 BOCA FOR VERMONT MINIMUM LOADS:
  - LIVE - AS CALCULATED FROM TRUSS & ROOF MATERIALS
  - WIND - 22 P.S.F. ON BOTTOM CHORD
  - DIAGONAL WIND BRACING REQUIRED

- LUMBER NOTES**
- FRAMING MEMBERS TO BE KILN DRIED CONSTRUCTION GRADE SPRUCE STR. #2
  - PLATES AND NAILERS IN CONTACT WITH CONCRETE TO BE CCA 40 TREATED
  - BOARD AND BATTEN SIDING TO BE NATIVE ROUGH BATTEN WITH 3" SPACES TO BE RANDOM WITH 6"-10" ANY HORIZONTAL JOINTS IN SPACING TO COVER ANY C/P HORIZONTAL SUBJOINED JOINTS ON NAILERS

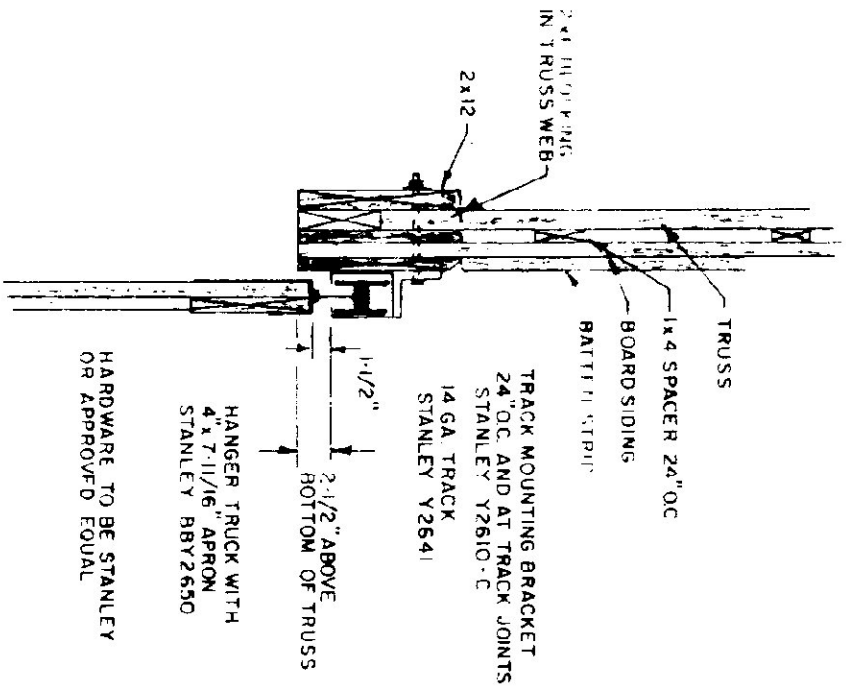
- FINISH NOTES**
- ONE COAT OF BATTEN AND BOARD SIDING WITH ONE ADDITIONAL COAT OF STAIN
  - STAIN TO BE OLIVAC OIL BASE SEMI TRANSPARENT OXIDRED BROWN # 713



**NAILER DETAIL**  
N.T.S.

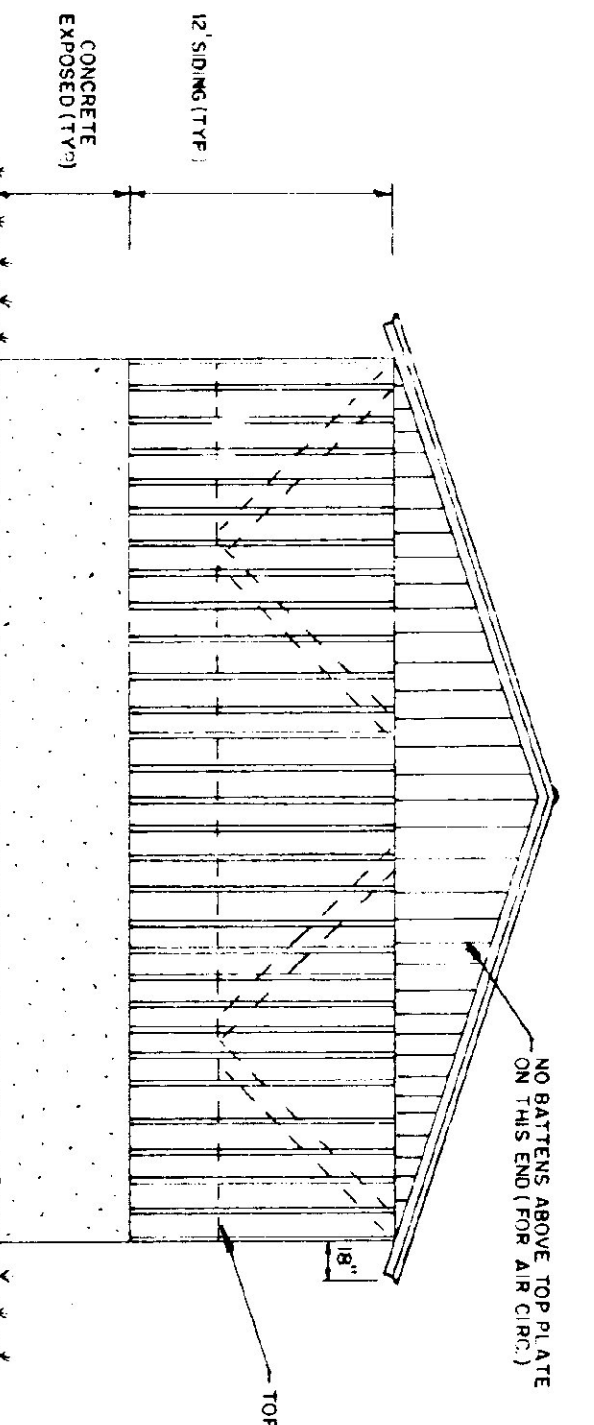


**TYPICAL WALL SECTION**  
3/4" = 1'-0"

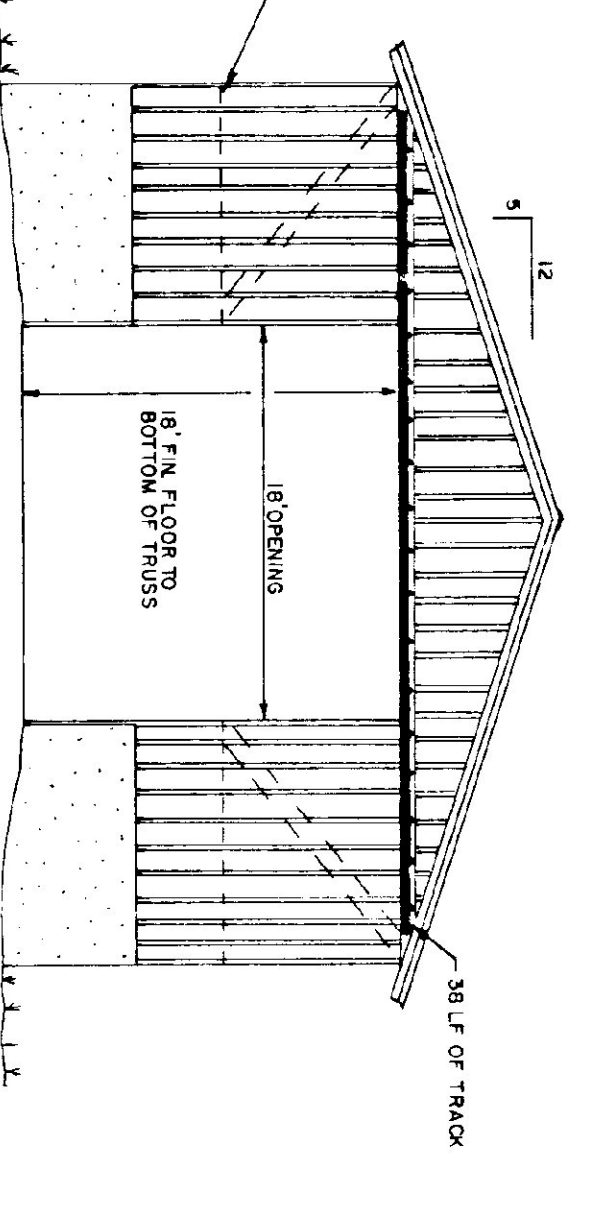


**TRACK MOUNT DETAIL**  
N.T.S.

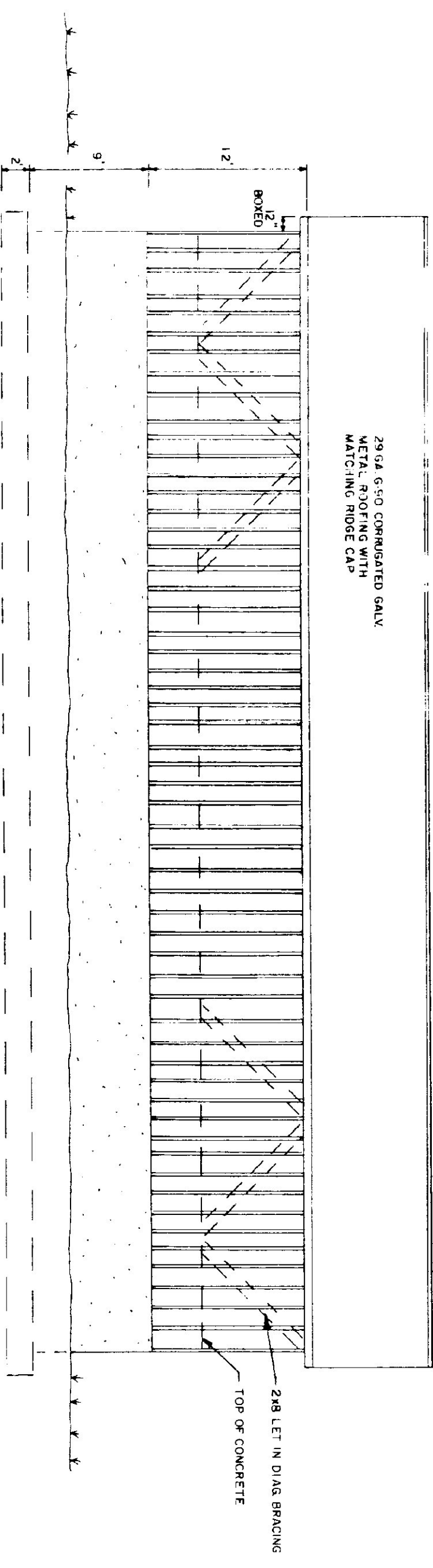
- CONCRETE NOTES**
- ALL CONCRETE TO BE 3000 P.S.I. AT 28 DAYS WITH MAXIMUM SLUMP OF 4"
  - EXPOSED WALLS TO BE DRESS FINISH.
  - 1/2" V JOINTS IN EXPOSED FACE OF CONST. JOINTS.
  - 3/4" CHAMFER ON OUTER FACE OF EXPANSION JOINTS.
  - L IRON CAST INTO WALL CORNERS AT DOOR OPENINGS.
  - RE BAR TO BE CONTINUOUS THROUGH CONST. JOINTS.
  - NO HORIZONTAL FINISH JOINTS IN WALLS.
  - NO CONST. OR EXP. JOINTS REQUIRED IN FOOTINGS.
  - ALL REBAR TO BE GRADE 60.
  - CONTRACTOR TO LEAVE NO METAL WITHIN 1" OF SURFACE USE L DEEP PLASTIC CONES AT ALL TIES AND PLUG ALL THE HOLES WITH SHANKED NON SHANK BRUSH.
  - RE BAR TO BE STYED ON BRACKING 4" MIN ABOVE GROUND.
  - CONCRETE SUPPLIER TO PROVIDE TEST CYLINDERS FOR TESTING BY OWNER.
  - CONCRETE SUPPLIER TO CONTACT ON SITE AIR TEST.



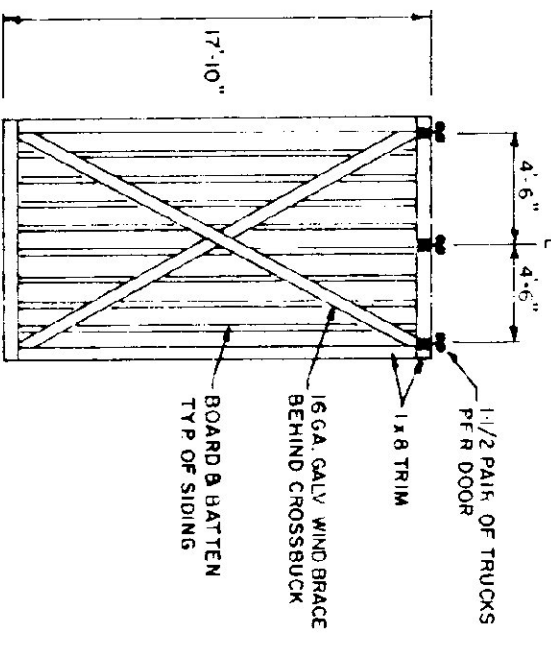
**BACK ELEVATION**  
1/8" = 1'-0"



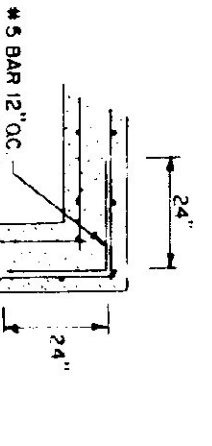
**FRONT ELEVATION**  
1/8" = 1'-0"



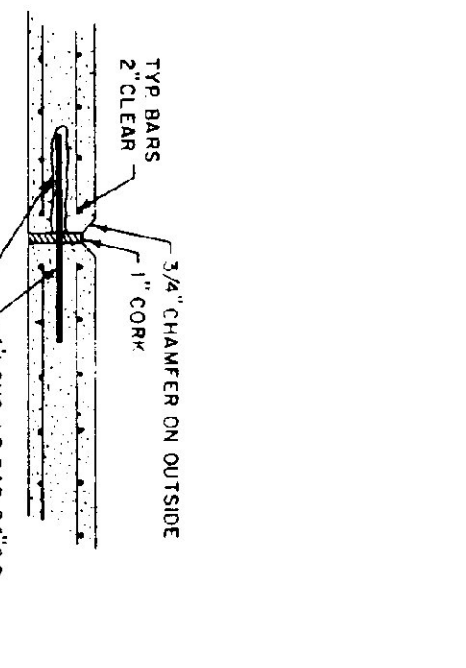
**SIDE ELEVATION**  
1/8" = 1'-0"



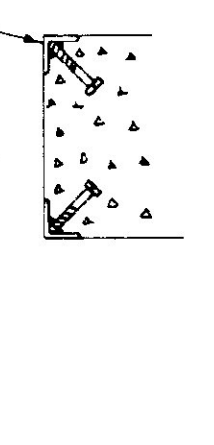
**DOOR DETAIL**  
N.T.S.



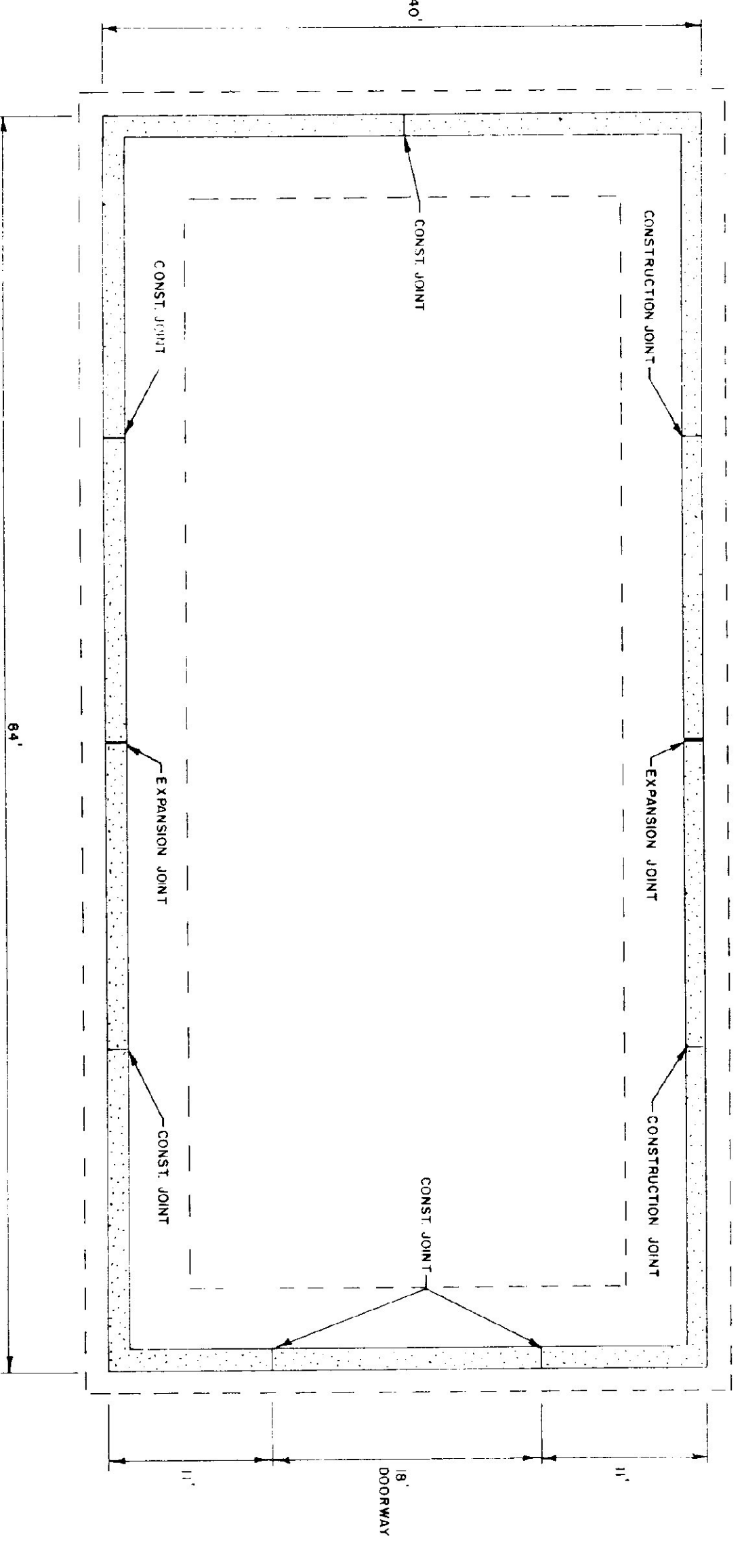
**CORNER DETAIL**  
N.T.S.



**EXPANSION JOINT DETAIL**  
N.T.S.



**CORNER GUARD**  
N.T.S.



**FOUNDATION PLAN**  
1/8" = 1'-0"

STATE OF VERMONT			
DEPARTMENT OF STATE BUILDINGS			
AGENCY OF ADMINISTRATION			
MONTPELIER, VERMONT			
40' x 84'			
SALT / SAND SHED			
THETFORD MAINTENANCE FACILITY			
THETFORD VERMONT			
DATE	SCALE	REVISIONS	DWG NO.
SEPT. 5, 1991	AS NOTED		
DRAWN BY:	APPROVED BY:		
S.K. JAWANICZ			
			1 OF 1